

HISTORIC
HAWAII
FOUNDATION



47TH ANNUAL PRESERVATION HONOR AWARDS

FRIDAY, MAY 21, 2021
LIVESTREAM EVENT



HISTORIC HAWAI'I FOUNDATION PRESERVATION HONOR AWARDS EXECUTIVE DIRECTOR'S MESSAGE



Aloha kākou,

Congratulations to all of the honorees for the 47th Annual Preservation Honor Awards from Historic Hawai'i Foundation. From Hā'ena to Hilo, we see the impact of communities saving places.

The Honor Awards showcase many of the places that give the Hawaiian Islands their unique texture.

The 2021 Awards recognize the management plans for a State Park with a rich tapestry of cultural, historic and natural resources and a City park that was part of the early playground movement that still provides recreation and breathing room in the urban center. We honor efforts to educate while simultaneously protecting the ruins of a 19th-century royal palace.

We explore special places through music, video, meditation, photography and wayside signage. We marvel at revitalizing both small cottages and an elegant theater through diligent craftsmanship and loving attention to detail.

We celebrate those who have saved ancient burial grounds from development, who have shared the history of monarchs with modern visitors, who have told the stories of plantation towns and Civilian Conservation Corps camps, who have ensured the place names of the rains and the reefs will be learned by future generations, and who engage and educate the youth into the joy of caring for beloved places.

And we find touchstones of community identity, collective memory and a sense of belonging from the companies, organizations and places that have persevered for a century and more.

These achievements inspire and educate not only us today but future generations as well. We are appreciative of the many people represented through these preservation awards.

With aloha,

Kiersten Faulkner
Executive Director



ABOUT HISTORIC HAWAII FOUNDATION

Over 45 years ago, Historic Hawai'i Foundation's founders committed to an idea: that people working together can preserve, protect and celebrate historic places that tell the many stories of Hawai'i. Today, utilizing strategic advocacy, education, assistance and partnership programs, Historic Hawai'i Foundation protects places of history and culture that are essential to the quality of life in the Hawaiian Islands.

BOARD OF TRUSTEES

Ricky Ching, President
Christine Mendes Ruotola, First Vice President
J. Scott Meidell, Second Vice President
Wendie McAllaster, Secretary
Vernon Wong, Treasurer
Donne Dawson, At Large Officer
Donna Kalama, At Large Officer
Jennifer Zelko-Schlueter, At Large Officer

STAFF

Kiersten Faulkner, Executive Director
Beth Iwata, Director of Development
Virginia Murison, Consult. Preservation Architect
Andrea Nandoskar, Education Program Manager
Michelle Kiczek, Development Assistant

TRUSTEES

Maenette Ah Nee Benham
Linda D. Chiu
Juliette M. Cooke
Will Crowley
Rosemary Fazio
Pat L. Griffin
Hal Hammatt
Len Isotoff
Allen Kale'iolani Hoe
Kekoa Kaluhiwa
Lehua Kauhane
Rick Kiefer
Roy Murai
Jim Niess
Greg Pietsch
Wendy Rice Peterson
Barbara Shideler
Thomas S. Witten
Lani Ma'a Lapilio, Ex Officio



HONOR AWARDS SELECTION COMMITTEE

Pat L. Griffin, Chair, Historian
Dawn N. Chang, Ku'iwalu
Alison Chiu, Fung Associates, Inc.
Linda Chiu, MD
Gary Coover, Coover Consultants
Donne Dawson, State of Hawai'i Film Office
Phil Deters, Community Volunteer
Kiersten Faulkner, Historic Hawai'i Foundation
Hal Hammatt, Cultural Surveys Hawai'i
Allen Hoe, Civilian Aide Emeritus, to the Secretary of the Army
Beth Iwata, Historic Hawai'i Foundation
Kekoa Kaluhiwa, Kamehameha Schools
Michelle Kiczek, Historic Hawai'i Foundation
Jim Niess, Maui Architectural Group, retired
Christine Mendes Ruotola, G70, retired
Katie Stephens, AHL
Adriane Truluck, AECOM

EVENT COMMITTEE

Christine Mendes Ruotola, Chair, G70, retired
Wayne Goo, Workshop HI
Beth Iwata, Historic Hawai'i Foundation
Michelle Kiczek, Historic Hawai'i Foundation
Cheyenne Martinez-Boyette, Bank of Hawai'i
Wendie McAllaster, HHF Planners
Tonia Moy, Fung Associates, Inc.

Proceeds from this event support the Preservation Honor Awards and other programs of Historic Hawai'i Foundation.

HISTORIC HAWAI'I FOUNDATION
IS HONORED TO RECEIVE THE
SUPPORT OF THESE SPONSORS

MAHALO NUI

PLATINUM SPONSORS



Ke Kai o Kulolo'i'a



GOLD SPONSORS



WCITARCHITECTURE

SILVER SPONSORS



SPECIAL MAHALO
to these wonderful people and organizations who helped
make this program possible.

Donors and Contributors

Honua Consulting
MASON
OMIZU Architecture
Fukumoto Engineering, Inc.
Christopher Haig
Scott Wilson and Christine Yano
Christine Mendes Ruotola
Cheyenne Martinez-Boyette
Kathleen Brooker
David and Patricia Faulkner
Christine Faye

Wayne Goo
Kekoa Kaluhiwa
Dawn Krause
Rita Lei Medina
Tonia Moy
Virginia Murison and Kenneth Whitcomb
Andrea Nandoskar
Kathleen Sato
Patrick Suenaga
Ryan Tam
Presley Wann

Program Support

Hawai'i Theatre Center
Hawai'i Architectural Foundation
Glenn Mason
Chris Hong
808 Video Productions
Ha.Ka. Entertainment
Nested Egg Productions
Jason Antonio
HONBLUE
Wayne Goo
Phil Deters
Peter Apo
Brickwood Galuteria
Pat Griffin
Maenette Benham
Ricky Ching
Mahealani Cypher
Scott Meidell



DAWSON

E pa'ahana i ka mālama 'ana i ka
mo'omeheu, ke kūlaiwi, a me ka
nohono o nā 'Ōiwi

WORKING DILIGENTLY TO PRESERVE
THE CULTURE, LAND, AND WAY OF LIFE OF
NATIVE HAWAIIANS

A NATIVE HAWAIIAN
GLOBAL BUSINESS

DAWSONOHANA.COM



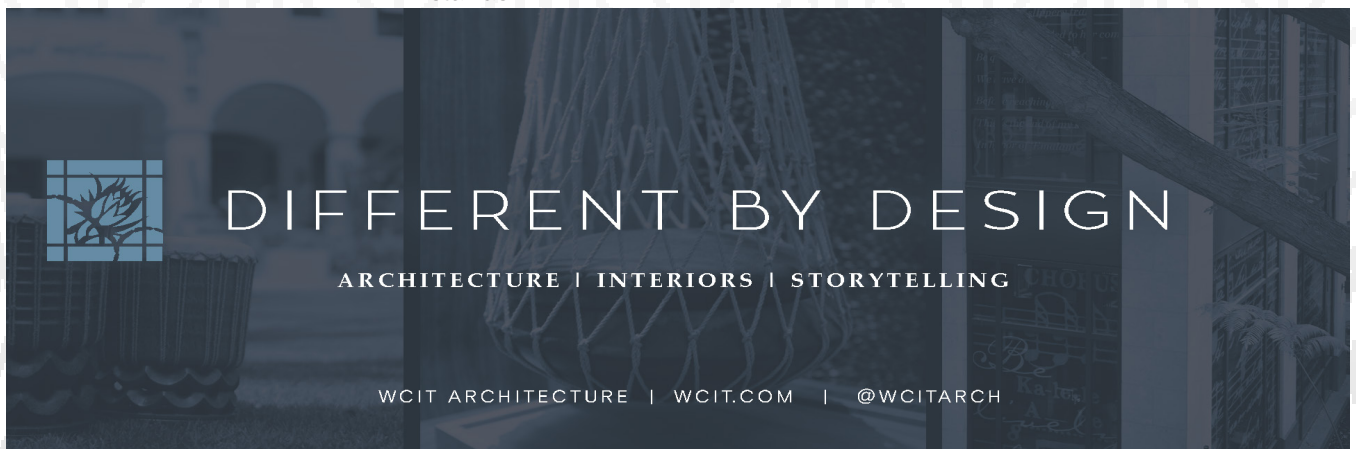
ABOUT THE PRESERVATION HONOR AWARDS

Historic Hawai'i Foundation's Historic Preservation Honor Awards are Hawai'i's highest recognition of projects, organizations, or individuals active in preservation, rehabilitation, restoration, or interpretation of the State's archaeological, architectural, and cultural heritage. The Preservation Honor Awards are designed to recognize achievements in interpreting, preserving or restoring Hawai'i's historic and cultural resources.

Award honorees are selected by a committee of professionals in architecture, history, planning, landscape design, architectural history and engineering. Each nomination is considered on its own merit and not in competition with others.

HONORS CATEGORIES

-  **PG 6** **ACHIEVEMENT IN INTERPRETIVE MEDIA** honors publically-available printed publication or visual presentation that interprets the history, preservation or physical characteristics of a historic property.
-  **PG 8** **INDIVIDUAL ACHIEVEMENT** recognizes a leader in the preservation field who has made achievements in preserving places significant to the history of Hawaii. Either site-specific or broad-based efforts may be identified.
-  **PG 11** **PROGRAMMATIC AWARD** honors an organization or government agency that engages in advocacy, education, programs or other activity supporting preservation efforts, either for a specific historic property or through a broad-based program.
-  **PG 13** **PROJECT AWARD** recognizes a specific project that preserved, rehabilitated or restored a historic property.
-  **PG 16** **ANNIVERSARY RECOGNITIONS** celebrate the rich history of kama'āina companies, organizations and institutions that are an important and integral part of the singular culture of the Hawaiian Islands.





ACHIEVEMENT IN INTERPRETIVE MEDIA



Ho'okaulike Interpretive Signage: The Dynasty of King Kamehameha I

Hawai'i Island

The Ho'okaulike Interpretive Signage project created site markers to identify specific locations on Hawai'i Island that are culturally and historically significant through association with the life of Kamehameha the Great. The County of Hawai'i launched the project to "ensure the unique sense of place and the appropriate recognition of our host culture." A QR code on each sign provides translation of the narratives into multiple languages enhancing the signs' usage and accessibility.

- Curent Events
- County of Hawai'i



The Music of Kalaupapa Concert

Kalaupapa, Moloka'i

Ka 'Ohana o Kalaupapa, under the direction of Valerie Monson, produced a livestream concert to showcase the music composed by the residents of the Kalaupapa Leprosy (now known as Hansen's Disease) settlement after being exiled to the remote health colony. An accompanying narrative shared the history of each composition to help show how music served as a source of healing and bonding for the isolated community.

- Valerie Monson
- Ka 'Ohana o Kalaupapa
- Stephen Inglis
- Chris Lau
- Billy V
- Brother Noland
- Melveen Leed
- Kevin Brown
- Lopaka Ho'opi'i
- Makana



The Merwin Conservancy: The Sitting Room: Threshold and Garden of Verses Virtual Programs

Haiku , Maui

The Merwin Conservancy devised two virtual programs; "Threshold", a meditative video created by artist duo Susannah Saylor and Edward Morris, offers a virtual space of sanctuary in a time of crisis. The second virtual program, The Garden of Verses, was a celebration of W.S. Merwin's birthday and featured a tour of the Merwins' home and garden, along with readings of Merwin's poetry read by guest artists.

- The Merwin Conservancy
- Saylor/Morris
- Austin ImageWorks

Honoring

The MUSIC of KALAUPAPA CONCERT

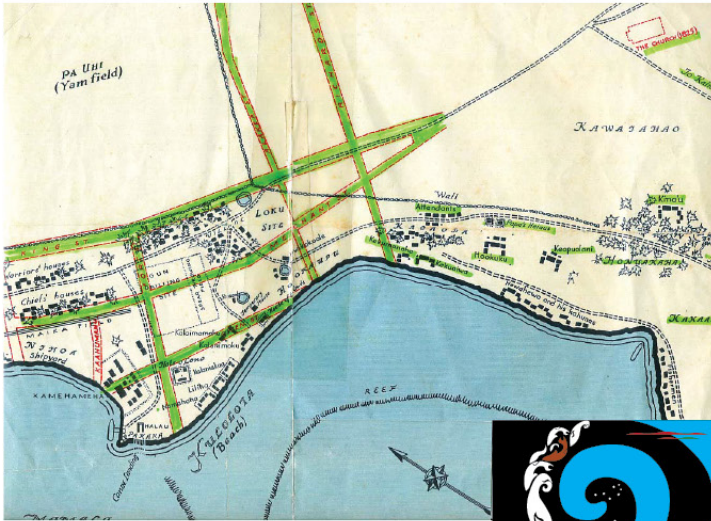
Luna of Kuloloia

The MERWIN CONSERVANCY

GOODFELLOWS BROTHERS, INC.

MR. CLIFFORD NAE'OLE

The King's Trail and Honokabua Burials



LA'A MA'A PA'A



KE KAI O KULOLOIA



HOOMEHEU

**The Kai, Awa, Reef,
Sands, Beach, Shoreline,
Paia, Stream, Pond,
and House of**

KULOLOIA

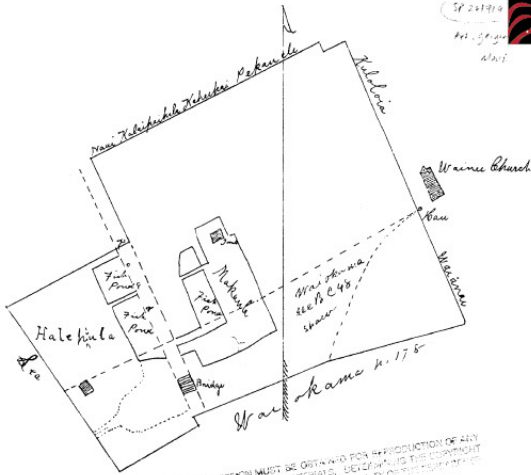
**thanks you for your continuing
protection, malama and care of**

THE ANCIENTS, OUR ANCESTORS

**ancestral, traditional, sacred,
cherished & special
persons, places, and resources**

of

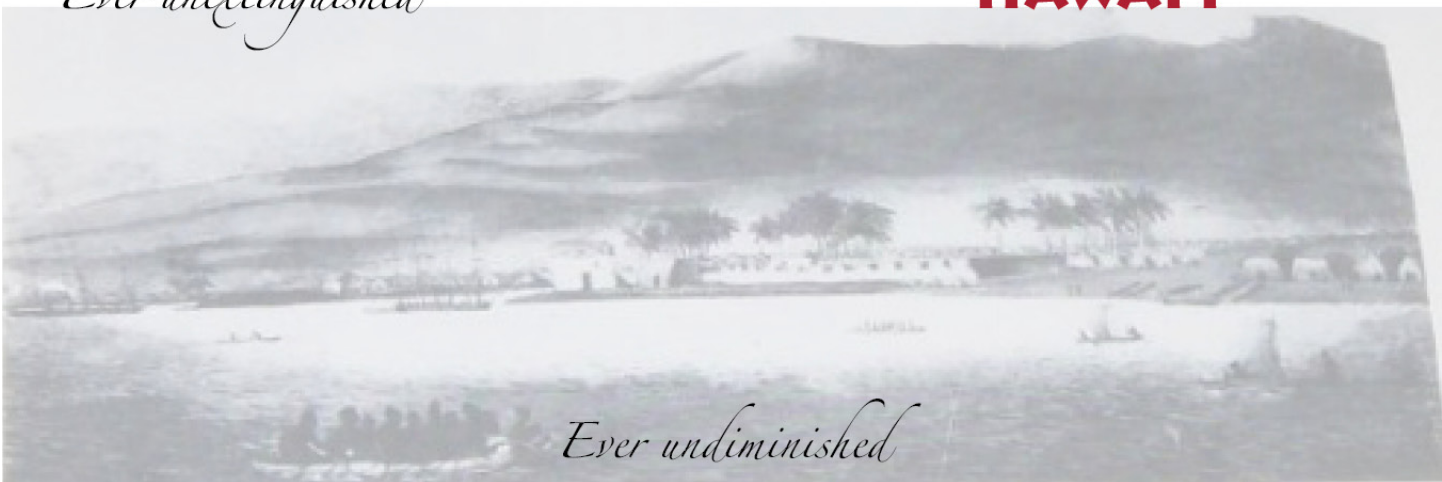
HAWAII



WRITTEN PERMISSION MUST BE OBTAINED FOR REPRODUCTION OF ANY BISHOP MUSEUM ARCHIVES MATERIAL. DEVELOPER HAS THE COPYRIGHT STATUS OF THIS MATERIAL IN THE DISTRICT OF COLUMBIA.

NO COPY NEGATIVE

Ever unextinguished



Ever undiminished



INDIVIDUAL ACHIEVEMENT



Dr. Carlos Andrade, historian and advisor

Hā'ena , Kaua'i

Carlos Andrade, Ph.D. is a gifted songwriter, linguist, and interpreter of history. After serving as a crewmember aboard Hōkūle'a, Andrade returned to teach courses as an associate professor at Kamakākūokalani Center for Hawaiian Studies at Hawai'iinuia'kea School of Hawaiian Knowledge at the University of Hawai'i at Mānoa. The culmination of his career is the book "Hā'ena: Through the Eyes of Ancestors" in which he employs mo'olelo, geography, history, and ethnography capturing the history of Hā'ena from earliest times to the present.

- Carlos Andrade
- Hui Maka'āinana O Makana
- Chipper Wichman



Dr. Lynette Hi'ilani Cruz, cultural practitioner and educator

Leeward O'ahu

Dr. Lynette Hi'ilani Cruz has been a strong and effective advocate for the preservation and maintenance of ancient Hawaiian places. As a professor of cultural anthropology at Hawai'i Pacific University, Cruz inspired hundreds of students to volunteer their services while learning about historic sites. Now retired, Cruz continues her advocacy through the nonprofit Ka Lei Maile Ali'i and has helped preserve dozens of historic and cultural resources.

- Lynette Cruz
- Ka Lei Maile Ali'i
- Ko'olaupoko Hawaiian Civic Club
- Ko'olau Foundation
- Ko'olauloa Hawaiian Civic Club
- Hau'ula Community Association
- Hālawa Valley Preservation Council

Ka Lei Maile Ali'i — The Queen's Women
An original reenactment based on a newspaper article printed in *The San Francisco Call*
By Renée Robinson

Rooted in Trust. Guided by Principle.

CIVIL ENGINEERING | ENVIRONMENTAL | TRAFFIC | LAND SURVEYING

Austin Tsutsumi & Associates, Inc.
Honolulu, Oahu | Wailuku, Maui

www.atahawaii.com

Hoomaikai
to Iolani Palace Historian
Zita Cup Choy
for receiving the Individual Achievement Award in the
Historic Hawaii Foundation 2021 Preservation Honor Awards.

Mahalo for sharing your manao with all of our visitors.

IOLANI PALACE | IolaniPalace.org



INDIVIDUAL ACHIEVEMENT (continued)



Ms. Zita Cup Choy, historian and community volunteer

Honolulu, O'ahu

Zita Cup Choy first became involved as a docent volunteer with The Friends of Iolani Palace in 1977 and then at Washington Place in 2000. Under the guidance of mentor Jim Bartels, Cup Choy became more deeply involved as a researcher and then was hired to lead docent training. She has a knack for recounting historical events with depth, accuracy and objectivity and has delivered a countless number of tours, presentations and classes. Cup Choy has built an admirable legacy as both an educator and historian.

- Zita Cup Choy
- The Friends of 'Iolani Palace
- Washington Place Foundation



Ms. L. Christine Faye, historian and preservationist

Kaua'i

As the executive director of Hui o Laka, Faye oversees the operations, maintenance, and outreach programs of the Kōke'e Natural History Museum, Kōke'e Community Conservation Corps Camp, and the Nature Trail within the Kōke'e and Waimea Canyon State Parks. In 2020 during the pandemic shutdown, Faye used the opportunity to redesign and refresh the museum's exhibits. Faye demonstrates a deep kuleana to research, document and share Kaua'i's history and historic places.

- Christine Faye
- Hui o Laka
- State Parks Division, Dept. of Land and Natural Resources
- Maui Architectural Group
- Hawai'i Museums Association

Hui o Laka



**Kōke'e
Natural History
Museum**



Maui Architectural Group



INDIVIDUAL ACHIEVEMENT (continued)



Mr. Clifford Nae'ole, cultural advisor and community advocate

Maui

As the Hawaiian Cultural Advisor for The Ritz-Carlton, Kapalua for over 20 years, Nae'ole has been a pioneer in the development of educational programs for visitor industry employees and guests on proper Hawaiian protocol, cultural traditions and mo'olelo. In the late 1980s, Nae'ole played an instrumental role in the preservation of an unmarked burial site where an estimated 2,000 nā iwi kūpuna are interred. Honokahua burial site is now protected as a wahi kapu and is listed on the Hawai'i Register of Historic Places.

- Clifford Nae'ole
- The Ritz-Carlton, Kapalua
- BRE Hotels & Resorts
- Honua Consulting
- 'Āina Archaeology



Ola nō 'o Honokāhua iā 'oe e
 Clifford Nae'ole i kou mālama
 maika'i i nā iwi kūpuna e moe
 loa nei ma ka 'āina aloha.
 Mahalo a nui, mahalo
 palena'ole,
 mahalo me ke aloha.

Honokāhua finds life through
 Clifford Nae'ole's work and
 advocacy to care for our
 ancestral burials that lay at
 rest upon our beloved land.
 Thank you so very much, with
 all our love and appreciation.





PROGRAMMATIC AWARD



Mother Waldron Playground Cultural Landscape Report

Kaka'ako, O'ahu

This Cultural Landscape Report (CLR) is significant as a historic preservation treatment document and long-term management tool for Mother Waldron Playground, a historic urban recreational site in central Honolulu. The CLR established preservation goals for the playground's architectural and landscape goals that may serve as the basis for sound decision-making for the future of the site as it is stressed by new development proposals encroaching on the park and by the planned adjacent elevated guideway of the Honolulu Rail Transit project.

- City & County of Honolulu Department of Parks and Recreation
- Honolulu Authority for Rapid Transportation
- Jacobs (formerly CH2M)
- HHF Planners



Congratulations to the
Honolulu Authority for Rapid Transportation
2021 Programmatic Award
Mother Waldron Playground Cultural Landscape Report



Congratulations

to all recipients of
Historic Hawaii Foundation's
2021 Preservation Honor Awards

Mahalo for all that you do for
Historic Preservation!

ahl.75

Congratulations, Clifford!



Civil Engineering, Land Surveying, Permitting & Project Management

Ronald Fukumoto, PE, LS

f e m a u i . c o m

Michael Silva, PE, LS, LEED AP



PROGRAMMATIC AWARD (continued)



Hā'ena State Park Master Plan, Hā'ena State Park

Kaua'i

This master plan is significant as a community-based plan that prioritizes the protection, rehabilitation and restoration of Hā'ena State Park's archaeological, cultural, and natural resources. Located on over 50 acres on Kaua'i's north shore, Hā'ena State Park's features include ancient agricultural settlements, heiau, streams, sand dunes, fishing areas, and wet caves. It also serves as the trailhead to the spectacular Nāpali Coast State Wilderness Park. Community and cultural advisory groups have been given responsibility to help oversee park access and its significant resources.

- Dept. of Land and Natural Resources, State Parks Division
- Hā'ena State Park Community Advisory Committee
- PBR Hawai'i & Associates
- Austin Tsutsumi & Associates, Inc.
- Department of Health, Disability and Communication Access Board
- Ka'imipono Consulting
- Engineering Solutions, Inc.
- Earth Tech/AECOM
- And many other stakeholders

PBR HAWAII
& ASSOCIATES, INC.

HO'OMAKAI'I'ANA TO ALL THE HONOREES THAT PRESERVE THE CULTURAL AND HISTORICAL DIVERSITY OF HAWAI'I

PBRHAWAII.COM • 1001 BISHOP STREET, SUITE 650 • HONOLULU HI 96813 • 808-521-5631
PLANNING • LANDSCAPE ARCHITECTURE • ENVIRONMENTAL STUDIES • ENTITLEMENTS/PERMITTING • GRAPHIC DESIGN

ĀINA ARCHAEOLOGY

CULTURAL & ENVIRONMENTAL RESOURCE MANAGEMENT

Congratulations to all of the Historic Hawai'i Foundation winners!

725 Kapi'olani Boulevard, 4th Floor, Honolulu, Hawai'i 96813
(808) 593-3020 AinaArch.com @ainaarchoeology

OMIZU
Architecture

Congratulations
To the Department of Land and Natural Resources on receiving the 2021 Preservation Honor Award for Kaniakapūpū Site Protection Measures

OMIZU ARCHITECTURE INC.
Graciously thanks:
DLNR's Division of Forestry and Wildlife
Hawai'i Tourism Authority
Honua Consulting LLC

AND THOSE WHO RESPECT, HONOR, AND MĀLAMA HAWAIIAN SACRED SPACES

Mahalo

19" Ad.indd 1 5/14/21 8:48 PM



PROJECT AWARDS

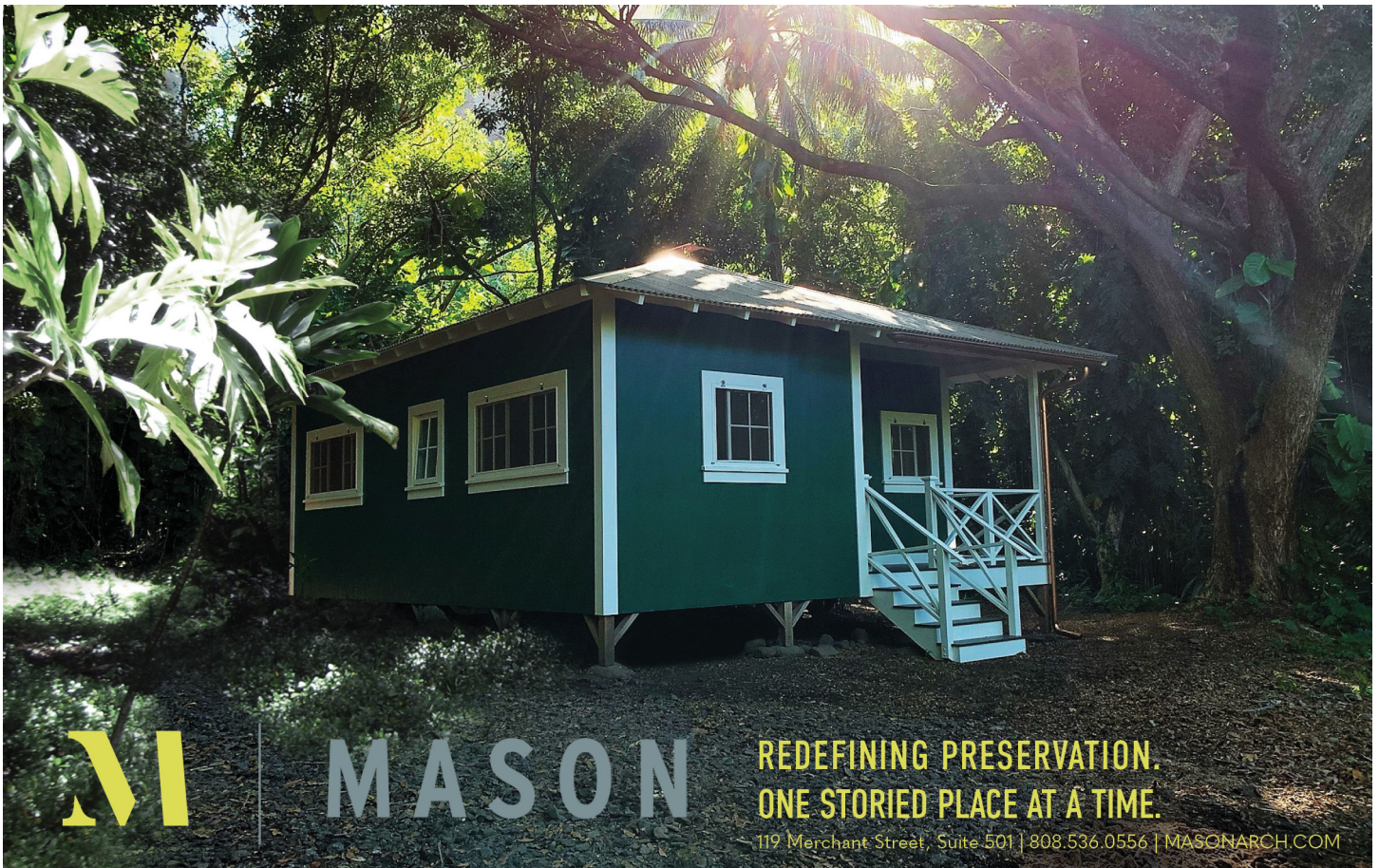


Allerton Cottage and Montgomery House Restoration

Hā'ena State Park, Kaua'i

The Allerton Caretaker's Cottage and the Montgomery House--within Hāena State Park are integral components of the implementation of the Master Plan for the park. The Allerton Caretaker's Cottage was restored for use by the park's rangers and for cultural practitioners at the Ka-ulu-o-Paoa heiau and the Ke-Ahu-a-Laka hula platform. The Montgomery house was restored for multiple purposes, including educational programs, park staff, and community volunteers who maintain the traditional loi kalo at Hāena.

- State of Hawai'i, Dept. of Land and Natural Resources, Division of State Parks
- MASON
- Kikialoa Construction Company, Ltd
- Micah Pepper





PROJECT AWARDS (continued)



Kaniakapūpū Site Protection Measures

Nu'uauu, O'ahu

This project developed measures to prevent trespassing at Kaniakapūpū, the ruins of Kamehameha III's summer palace. The project included installation of pathways, signage, and felling of large trees that are considered threats to the historic structure and site features. Kapu signage was mounted near the entrance to indicate that the area is a restricted site regulated by the State Department of Land and Natural Resources and access is available by permit only.

- State of Hawai'i, Division of Forestry & Wildlife
- Hawai'i Tourism Authority
- Honua Consulting
- Omizu Architecture
- 'Ahahui Mālama o Kaniakapūpū



Aloha nui iā 'oe e Dr. Baron Ching me ka 'Ahahui Mālama o Kaniakapūpū, no ka 'auamo kuleana me kou aloha i ka malama maika'i aku i ia wahi pana pūlama nui 'iā.

Love, honor and respect to you, Dr. Baron Ching and the members of 'Ahahui Mālama O Kaniakapūpū for your dedication and commitment to preserve our special and sacred places.

HONUA
CONSULTING

HAWAII TOURISM
AUTHORITY



OMIZU
ARCHITECTURE

LSC
Landscape Solutions
808-450-4737



PROJECT AWARDS (continued)



Palace Theater Façade Restoration

Hilo, Hawai'i Island

Restoration of the exterior included repairs to the stucco and wood façade, repairing the rot on the doors, painting the façade and trim, replacing the awning and installing new neon for the signature marquee sign. The project also addressed interior needs for the safety and comfort of patrons. Before replacing the air conditioning system, the Palace upgraded electrical wiring and replaced the outdated fire safety system, eventually replacing all 600 of the 1930-era sprinkler heads.

- Friends of the Palace Theater
- MASON
- Ina Custom Signs
- Anvil, Inc.
- Hennen Construction
- Pacific Rim Fire Protection, LLC
- Perez Wall Solutions

Surf

SUP

Dive

Right in our back yard!

Surf N Sea
NORTH SHORE, HI

On the beach since 1965

(808) 637-SURF SurfNSea.com

ANNIVERSARY RECOGNITIONS



200 YEARS

BICENTENNIAL ANNIVERSARY



Hawaiian Mission Houses Frame House (Ka Hale Lā'au), Honolulu, O'ahu

175 YEARS

DODRANSBICENTENNIAL ANNIVERSARY



Saint Louis School, Honolulu, Oahu



**FUNG
ASSOCIATES INC**

CONGRATULATIONS

To all 2021 Preservation Award Honorees
and Special Compliments to
Kiersten Faulkner!



Apply Now!



**Learn. Lead.
Serve.**



**175
Years**
1846 - 2021

HŌ I I K A P I K O

(808) 739-4832 | saintlouishawaii.org

150

YEARS

SESQUICENTENNIAL ANNIVERSARY



Iolani Barracks, Honolulu, O'ahu



Kamehameha V Post Office, Honolulu, O'ahu

125

YEARS

QUASQUICENTENNIAL ANNIVERSARY



Pālama Settlement, Honolulu, Oahu

100 YEARS

CENTENNIAL ANNIVERSARY



Ala Wai Canal, Honolulu, O'ahu



Goodfellows Brothers, Inc., Kīhei, Maui



Anahulu Stream Bridge, Hale'iwa, O'ahu



Hawaiian Electric Maui, Kahului, Maui



Diamond Bakery, Honolulu, O'ahu



HPM Building Supply, Kea'au, Hawai'i Island

Celebrating 100 years of serving our Maui County community



This year marks 100 years of serving Maui, Molokai and Lanai. We remain dedicated to serving our communities with much more than electricity. Today, we are working to build a sustainable Hawaii in which our communities, our customers, our children and grandchildren, will thrive together.

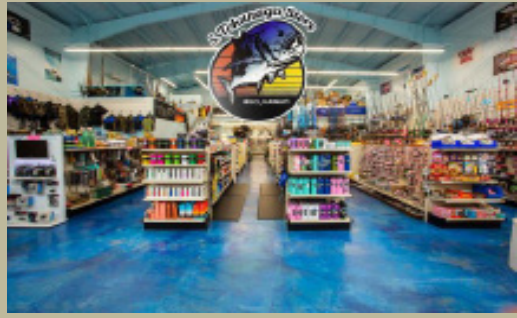
Mahalo to the Historic Hawai'i Foundation for our Anniversary Recognition!



**Hawaiian
Electric**



Natsunoya Tea House, Honolulu, O'ahu



S. Tokunaga Store, Hilo, Hawai'i Island



Nisshodo Candy Store, Honolulu, O'ahu



Surf N Sea Building (originally a general store), Hale'iwa, O'ahu



Old Maui High School Administration Building, Paia, Maui



Territorial Savings Bank, Honolulu, O'ahu



Rotary Club of Hilo, Hilo, Hawai'i Island





THE PAEPAE I KA PŌHAKU AWARD



The Hawai'i Architectural Foundation is pleased to recognize Kiersten Faulkner, Executive Director of Historic Hawai'i Foundation, as its 2021 Paepae I Ka Pōhaku Award recipient. The award, given only to non-architects, recognizes Kiersten for her sustained efforts to raise community awareness of architectural design and the importance of the built environment.

Kiersten's impact as an advocate for the preservation of our culture and historic buildings is immeasurable. Since assuming leadership of HHF in 2006, Kiersten has focused on reaching positive outcomes, even in the face of adverse circumstances. Her commitment to thoughtful and sensitive design is critical to preserving the sense of place unique to the Hawaiian Islands.

Please join Hawai'i Architectural Foundation in paying tribute to Kiersten for her 15 years of saving Hawai'i's historic places!

Haleakalā Ranch Company congratulates the Preservation Honor Awardees for their contributions to the preservation of our culture and cherished places.



Congratulations!

Hawai'i Historic Foundation
2021 Preservation
Awardees

ARCHITECTURE
CIVIL ENGINEERING
INTERIOR DESIGN
PLANNING & ENVIRONMENT
G70.DESIGN



HANAUMA BAY EDUCATION CENTER



HILTON HAWAIIAN VILLAGE MASTER PLAN



KUALOA RANCH MASTER PLAN



680 Iwilei Road, Suite 690
Honolulu, Hawai'i 96817
www.historichawaii.org