

Historic Integrity & Eligibility for The National Register of Historic Places

Aloha! We will begin shortly.

Today we will be using the Chat function to receive your input.

Please enter your name and location to check in.

Historic Integrity & Eligibility for The National Register of Historic Places

Wednesday, April 26, 2023

Presented by Historic Hawai'i Foundation and National Park Service

Image: Honouliuli National Historic Site, O'ahu

HISTORIC HAWAII'I FOUNDATION

A statewide non-profit advocacy organization, **Historic Hawai'i Foundation** encourages the preservation of historic buildings, sites, structures, objects and districts relating to the history of Hawai'i.

We help people save Hawai'i's historic places.

www.HistoricHawaii.org





The **National Park Service** preserves unimpaired the natural and cultural resources and values of the National Park System for the enjoyment, education, and inspiration of this and future generations. The Park Service cooperates with partners to extend the benefits of natural and cultural resource conservation and outdoor recreation throughout this country and the world.

Speakers



Elaine Jackson-Retondo, Region Preservation Partnerships and History Programs Manager, Interior Regions 8, 9, 10 and 12 in the National Park Service Pacific West Regional Office, earned her Doctorate in Architectural History and Masters of Architecture from the University of California, Berkeley and her Bachelor of Architecture from the University of Notre Dame in South Bend, Indiana. She has worked in the National Park Service since 2002.



Katie Stephens is a historic architect with Architects Hawai'i Ltd (AHL). She has 30 years experience in the field of historic preservation. She serves as Chair of the Hawai'i Historic Places Review Board, which evaluates nominations for listing properties in the Hawai'i Register of Historic Places. Katie received a Master of Architecture degree and Certificate of Historic Preservation from the University of Hawai'i at Mānoa.

Speakers



Jadelyn Moniz Nakamura is the Research Coordinator and Science Advisor for the Hawaii-Pacific Islands Cooperative Ecosystems Studies Unit for the National Park Service. From 2000 to 2019 Jade was the Integrated Resources Manager and Archeologist at Hawaii Volcanoes National Park. She attended the University of Hawaii at Mānoa earning a dual bachelor's degree in History and Anthropology, then a Masters and Ph.D in Anthropology with an emphasis in Archaeology.



Paul R. Lusignan is senior historian with the National Register of Historic Places program at the National Park Service in Washington, DC. With the Park Service since 1992, Paul is responsible for evaluating historic properties nominated by state, tribal and federal agencies for listing in the National Register of Historic Places. He is a graduate of the University of Vermont's historic preservation program.

ABOUT THIS COURSE

Seven Aspects of Integrity

Relationship between Integrity and Condition

Considerations for architecture/building integrity

Considerations for archaeology/site integrity

Considerations for ephemeral/event-based
significance

Interaction

Chat Box: use the chat to ask a question at any time. We will address questions after the presentation is finished.

Interactive Polling: use your mouse to select your answer to multiple choice questions.

Survey

Please indicate your affiliation or primary interest in today's topic.

Select all that apply.

- Native Hawaiian Organization
- Federal, State or Local Government
- Community or Preservation Organization
- Land Use or Cultural Resource Professional
(planner, archaeologist, architect, landscape architect, engineer, construction)
- Public or Community Interest
- Property Owner/Manager or Developer
- Other

Aspects of Integrity

NATIONAL REGISTER OF HISTORIC PLACES

INTEGRITY

One of the Criteria used to evaluate whether a property is eligible for listing on the National Register

Defined as the authenticity of a property's historic identity, evidenced by the survival of physical characteristics that existed during the property's period of significance. (National Register Bulletin 16A)

NATIONAL REGISTER OF HISTORIC PLACES

National Historic
Preservation Act
54 U.S.C. § 302101

The Secretary **may expand and maintain a National Register of Historic Places** composed of districts, sites, buildings, structures, and objects **significant in American history, architecture, archeology, engineering, and culture.**

NATIONAL REGISTER ELIGIBILITY CRITERIA

Code of Federal
Regulations
36 CFR Part 60

Significance in American history, architecture, archeology, engineering, and culture is present in districts, sites, buildings, structures, and objects **that possess integrity** of location, design, setting, materials, workmanship, feeling, and association .

NATIONAL REGISTER OF HISTORIC PLACES

SIGNIFICANCE

Code of Federal
Regulations
36 CFR Part 60

Criterion A: Historical Events &
Patterns

Criterion B: Historically Significant
Person

Criterion C: Architecture &
Engineering

Criterion D: Information Potential

NATIONAL REGISTER OF HISTORIC PLACES

PERIOD OF SIGNIFICANCE

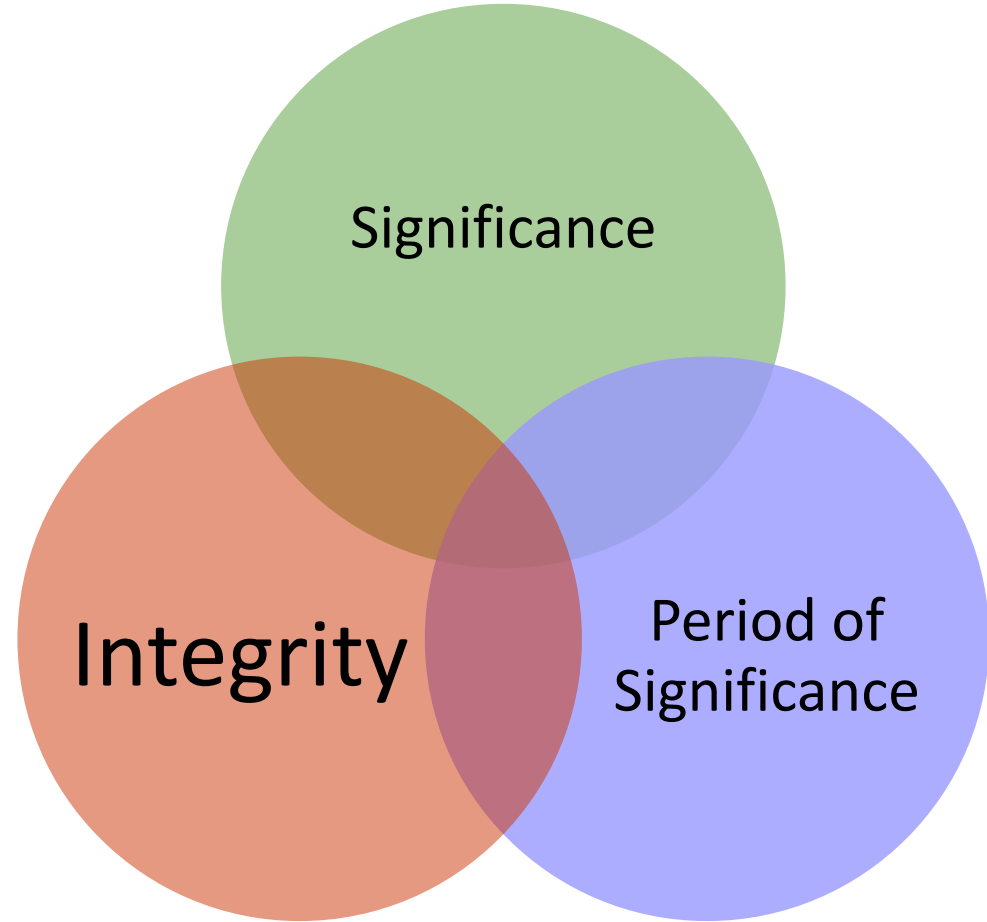
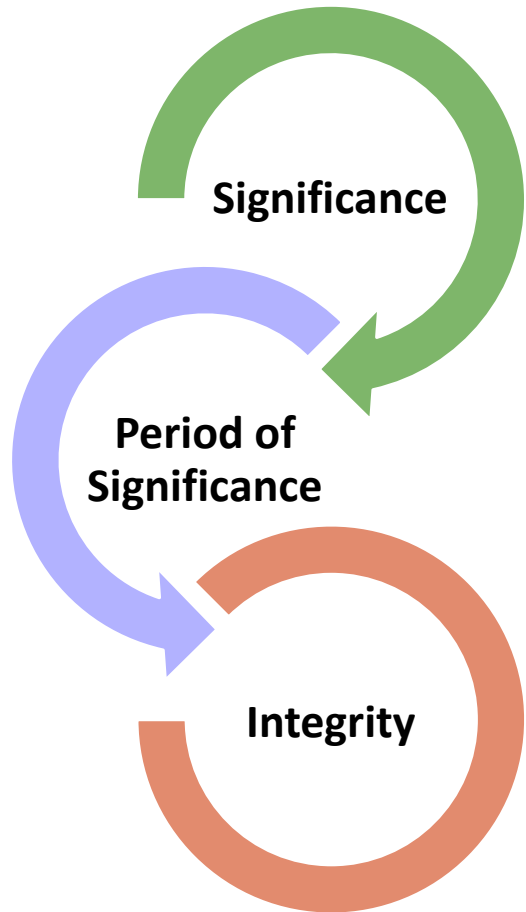
Definition

The span of time in which a property attained the significance for which it meets the National Register criteria. (National Register Bulletin 16A)

Could be a single date or date range that has a beginning and end.

NATIONAL REGISTER ELIGIBILITY CRITERIA

INTEGRITY Assessment



NATIONAL REGISTER ELIGIBILITY CRITERIA

INTEGRITY: Seven Aspects

Code of Federal
Regulations
36 CFR Part 60

- **Location**
- **Design**
- **Setting**
- **Materials**
- **Workmanship**
- **Feeling**
- **Association**

NATIONAL REGISTER ELIGIBILITY CRITERIA

INTEGRITY

Integrity

An assessment of authenticity of a property's historic identity, using the **seven aspects of integrity** as identified in the Federal Code of Regulations

(36 CFR 60.4)

Condition

An assessment of the physical state of the property, typically using a **scale of poor, fair, good, or excellent.**

NATIONAL REGISTER ELIGIBILITY CRITERIA

INTEGRITY: Seven Aspects

Location - The place where the historic property was constructed or the place where the event occurred.



Hualoha Church, Kaupō, Maui. Photographer: Elaine Jackson-Retondo

NATIONAL REGISTER ELIGIBILITY CRITERIA

INTEGRITY: Seven Aspects

Design is the combination of elements that create the form, plan, space, structure, and style of a property.

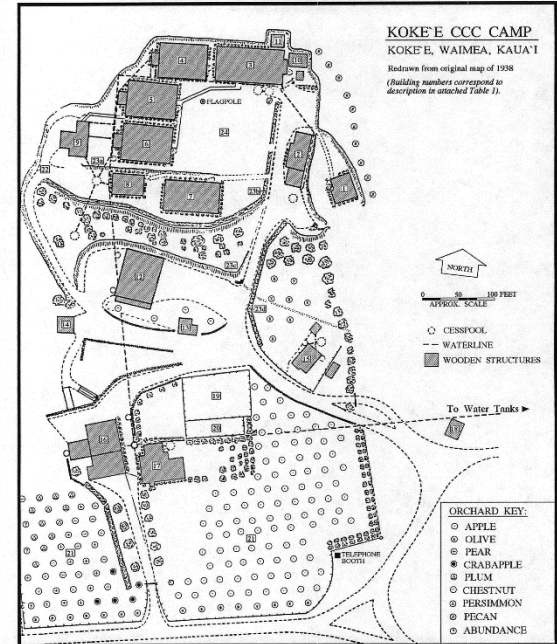


FIG. 2 - Layout of the CCC camp as documented in the 1938 map.



NATIONAL REGISTER ELIGIBILITY CRITERIA

INTEGRITY: Seven Aspects

Setting is the physical environment of a historic property. It involves how the property is situated and its relationship to surrounding features and open space.



Hawai'i State Capitol Building, Honolulu, O'ahu. Source, Wikimedia Commons

NATIONAL REGISTER ELIGIBILITY CRITERIA

INTEGRITY: Seven Aspects

Materials - are the physical elements that were combined or deposited during a particular period of time and in a particular pattern



NATIONAL REGISTER ELIGIBILITY CRITERIA

INTEGRITY: Seven Aspects

Workmanship is the physical evidence of the crafts of a particular culture or people.



Photo Courtesy Historic
Hawai'i Foundation



Photographer: Elaine
Jackson-Retondo



Photographer: Elaine
Jackson-Retondo

NATIONAL REGISTER ELIGIBILITY CRITERIA

INTEGRITY: Seven Aspects

Feeling is a property's expression of the aesthetic or historic sense of a particular period of time.



Ket Hing Tong Society Building,
Lahaina, Maui



Wo Hing Tong Society Building,
Lahaina, Maui



Chee Kung Tong Society Building,
Lahaina, Maui

NATIONAL REGISTER ELIGIBILITY CRITERIA

INTEGRITY: Seven Aspects

Association is the direct link between an important event or person and a historic property.



Kalaupapa Peninsula, Moloka'i , image from NHL nomination update, photographer, T. Scott Williams

NATIONAL REGISTER ELIGIBILITY CRITERIA

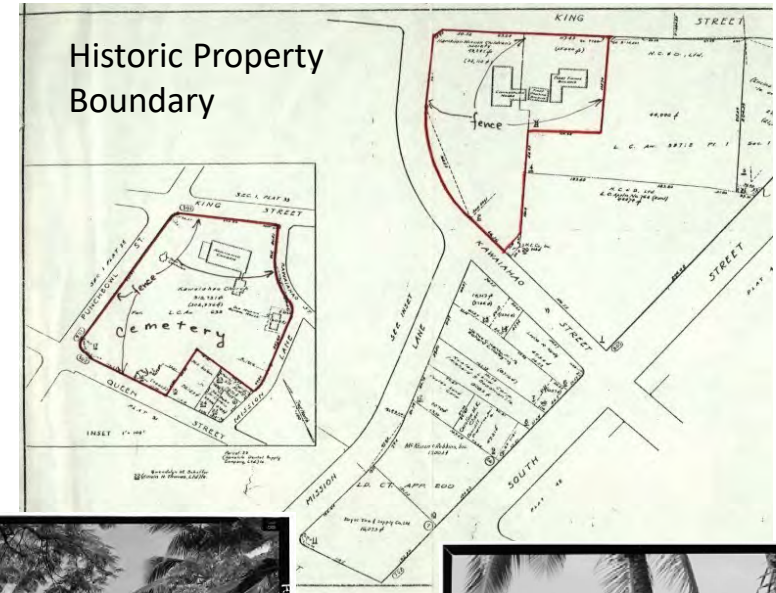
INTEGRITY



Kawaiaha'ō
Church, 1874



Lunalilo's
Tomb, 1874



Historic Property
Boundary



Kawaiaha'ō Church, 1966



Lunalilo's Tomb, 1966



Mission House, 1966

Kawaiaha'ō
Church and
Mission
Houses,
Honolulu,
O'ahu

Knowledge Check 1

Eligibility for listing a property in the National Register of Historic Places is based on which of the following:

- A. Historic Significance
- B. Aspects of Integrity
- C. Physical Condition
- D. Both Significance and Integrity
- E. All of the Above

Knowledge
Check 1

Eligibility for listing a property in the National Register of Historic Places is based on which of the following:

D. Both Significance and Integrity

Architectural

ARCHITECTURAL INTEGRITY

7 aspects of Integrity: location, setting, design, materials, workmanship, feeling, and association

Integrity is the authenticity of a property's historic identity, evidenced by the survival of physical characteristics that existed during the property's period of significance, which provides the ability to convey significance.

Existence of original historic fabric, or which matches the original historic fabric.

Form/massing

Exterior wall finish

Roof form & finish

Windows & doors

Ornamentation

Porches, chimneys

Interior layout

Interior finishes



Iolani Palace, Honolulu, O'ahu

Form/massing

Exterior wall finish

Roof form & finish

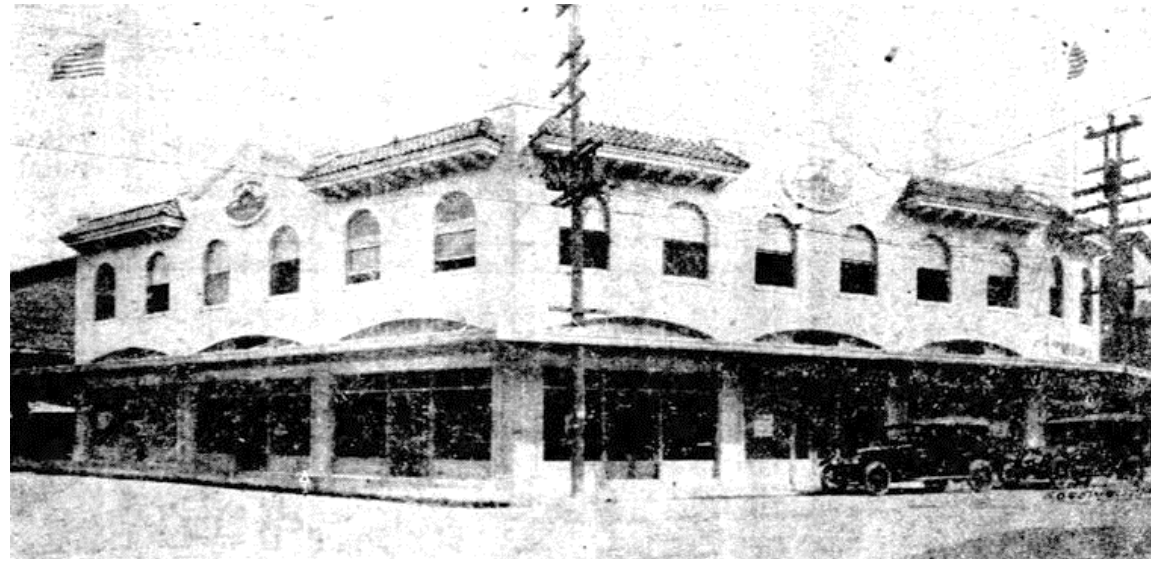
Windows & doors

Ornamentation

Porches, chimneys

Interior layout

Interior finishes



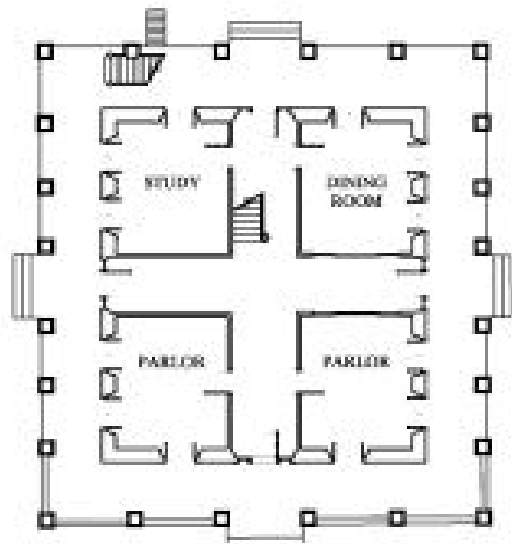
Sperry Flour Co./Kaya Fishing Supply
Chinatown Historic District,
Honolulu, O'ahu

Historic Alterations

Changes made during the property's period of significance may contribute to the property's integrity.

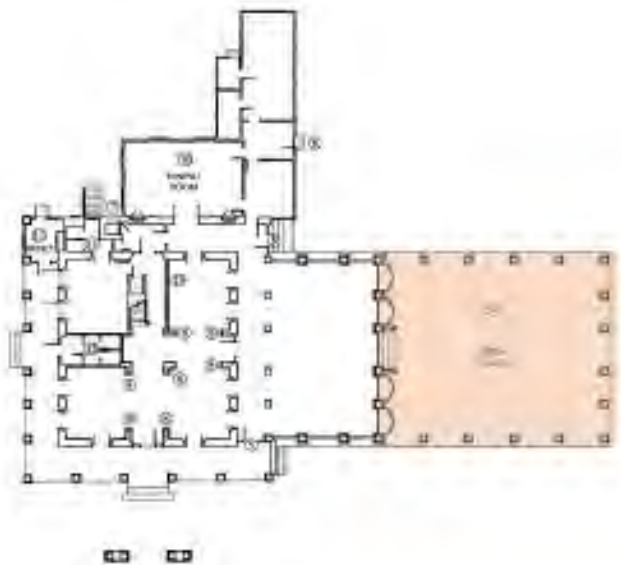
Washington Place, O'ahu, 1847











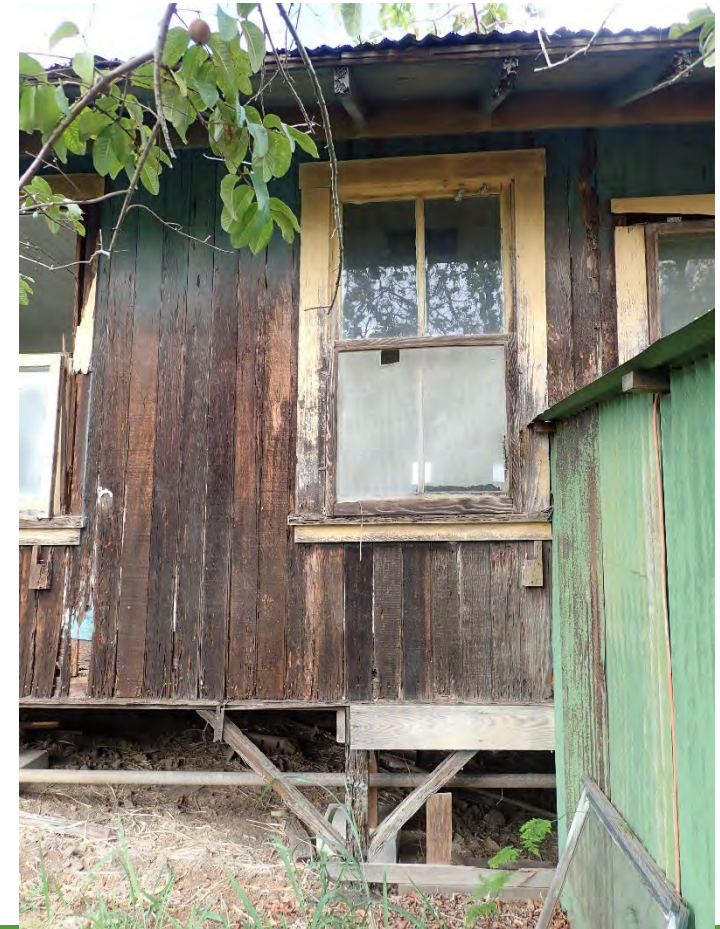
INTEGRITY

CONDITION



Condition (poor) / Integrity (high)

Kaupō School Teacher's Cottage, Kaupō, Maui, 1920

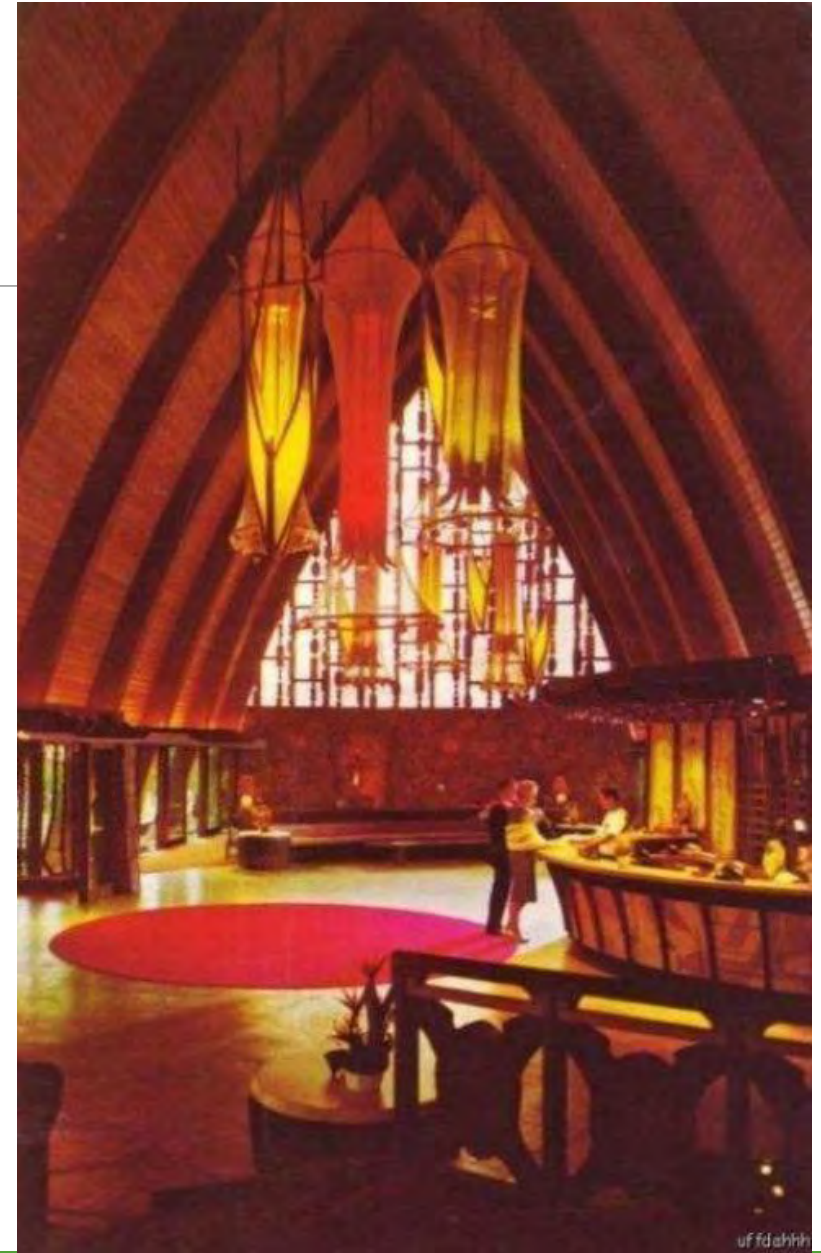




Condition (poor) / Integrity (high)

Coco Palms Resort, Kaua'i, 1950s







Heavily damaged in Hurricane Iniki 1992



Condition (high) / Integrity (low)

Ala Moana Shopping Center, 1959/1966

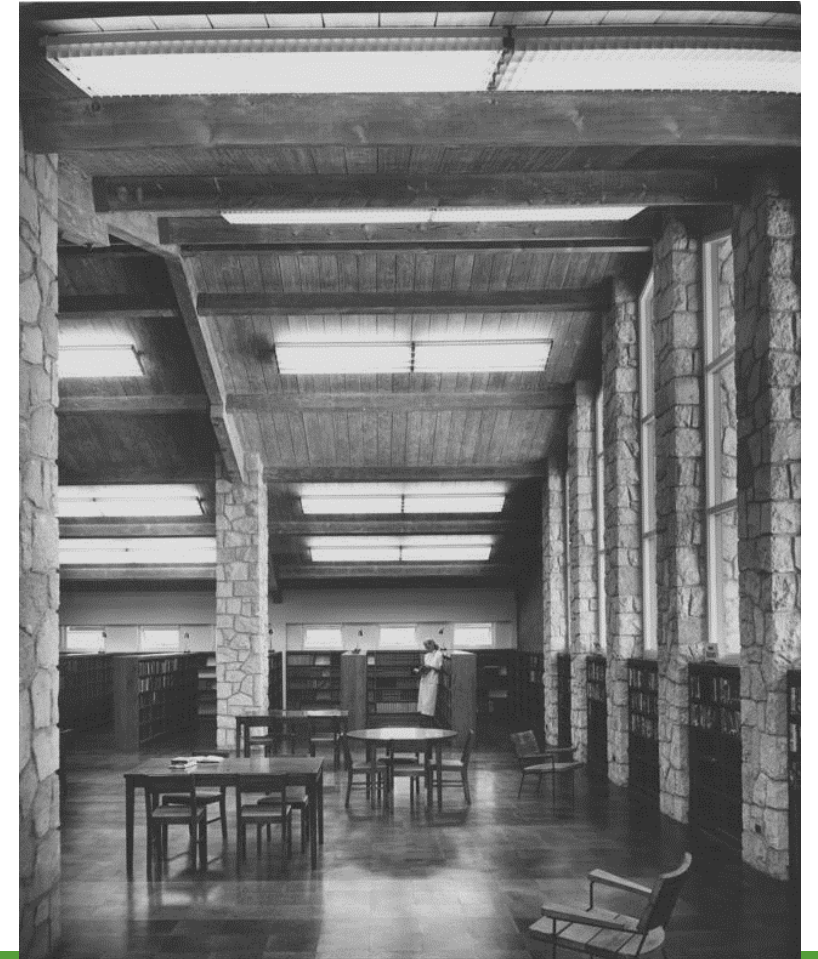






Condition (high) / Integrity (high)

Waikīkī–Kapahulu Library, 1952





Knowledge Check 2

Assessing condition of a property is the first step when determining if it is eligible for listing in the National Register of Historic Places.

TRUE

FALSE

Knowledge Check 2

Assessing condition of a property is the first step when determining if it is eligible for listing in the National Register of Historic Places.

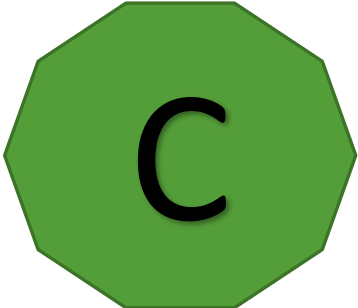
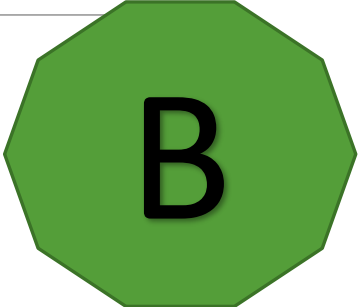
✓ **FALSE**

Archaeology/Sites

REQUIREMENTS FOR ELIGIBILITY



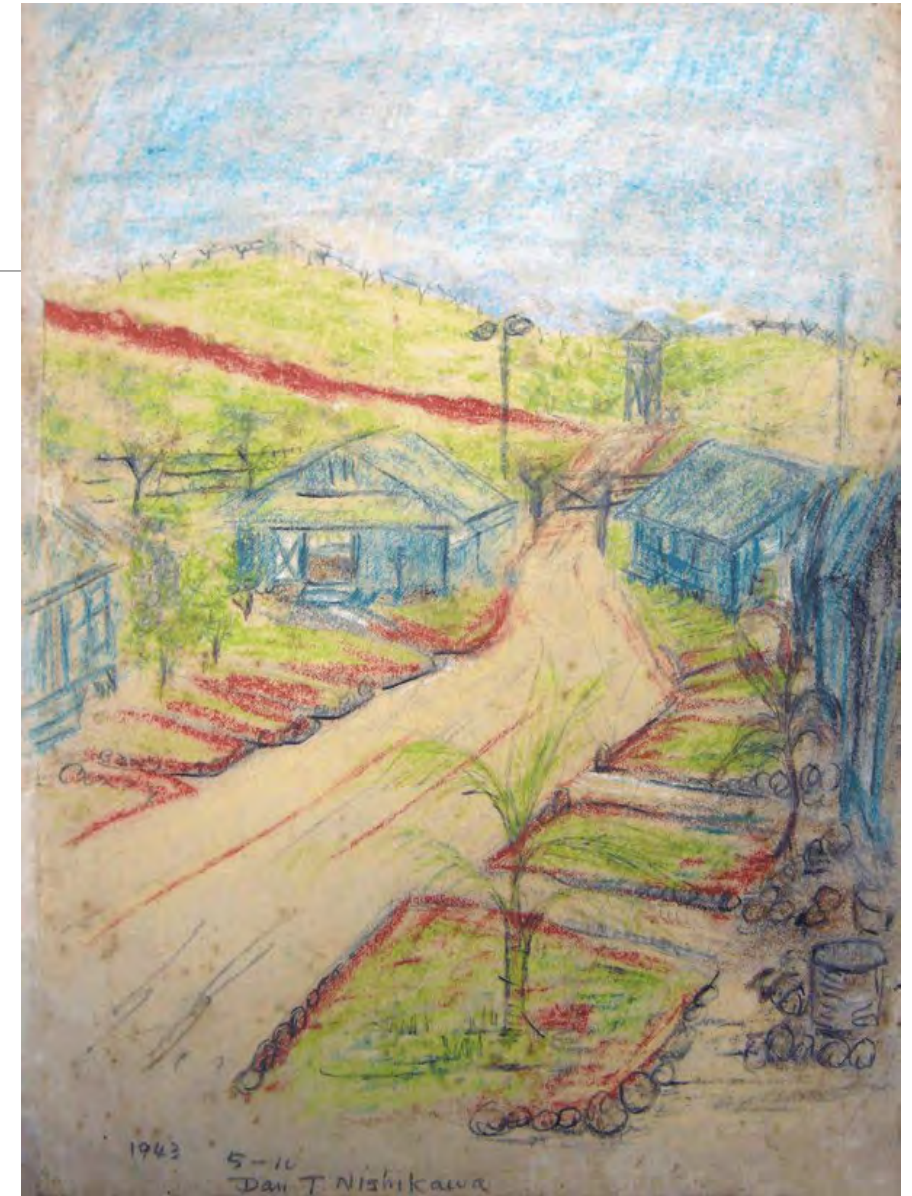
HOW INTEGRITY RELATES TO CRITERIA A - D



INTEGRITY OF LOCATION



INTEGRITY OF DESIGN



INTEGRITY OF DESIGN



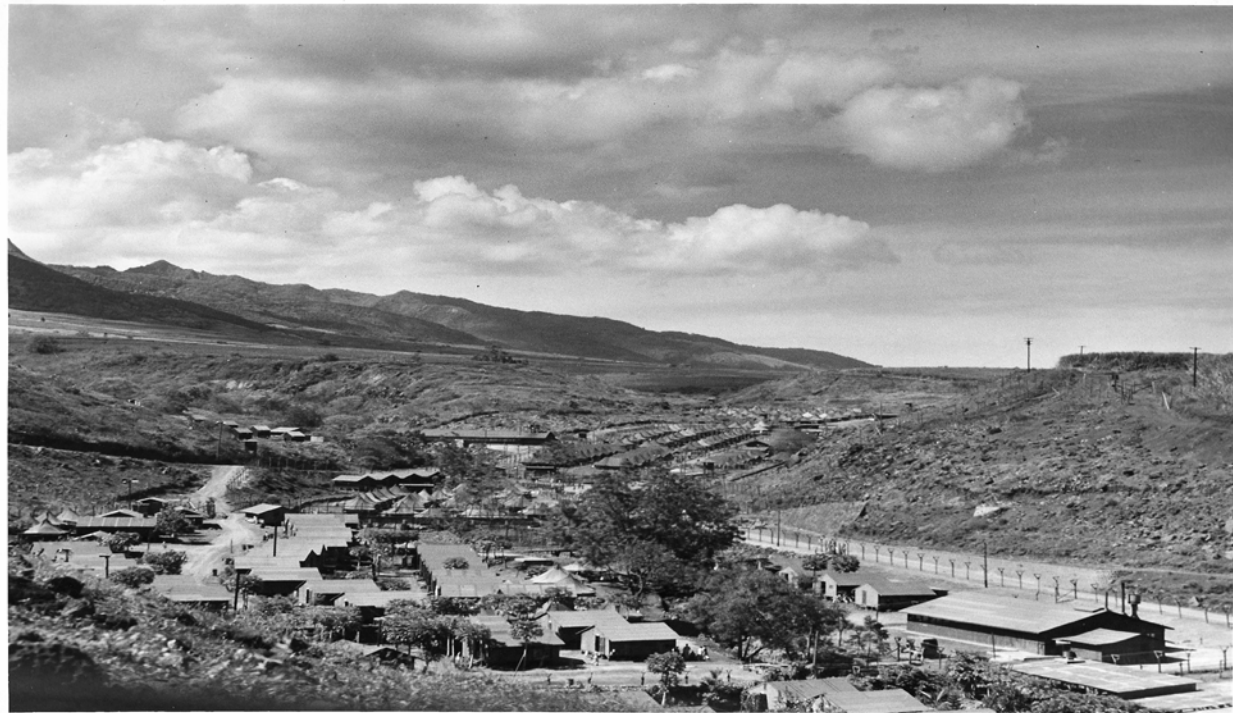
SIDEWALK TO MESS HALL

INTEGRITY OF DESIGN



GENERATOR BUILDING

INTEGRITY OF SETTING/FEELING



HONOULIULI – JIGOKU DANI (HELL VALLEY)

INTEGRITY OF MATERIALS & WORKMANSHIP



INTEGRITY OF MATERIALS



INTEGRITY OF ASSOCIATION



ALTERATIONS



FLOODS, FIRE, EROSION, LAVA

RESOURCES NOT VISIBLE....



RESOURCES NOT VISIBLE....



[Malu'ulu o Lele Park | Lahaina Historical Sites](#)
[\(mauimagazine.net\)](#)



Knowledge Check 3

Subsurface archaeological sites that are not visible above ground may be eligible for listing in the National Register of Historic Places.

TRUE

FALSE

Knowledge Check 3

Subsurface archaeological sites that are not visible above ground may be eligible for listing in the National Register of Historic Places.

✓ **TRUE**

Ephemeral/ Intangible Aspects

EPHEMERAL/INTANGIBLE ASPECTS

SIGNIFICANCE

Why is it significant?

What are the characteristics necessary to convey those associations?

What is the period of significance?

CONTEXT

What else might share similar connections?

Rarity vs Common types?

Integrity versus Condition



UNDERREPRESENTED COMMUNITIES



UNDERREPRESENTED COMMUNITIES



UNDERREPRESENTED COMMUNITIES



Traditional Cultural Places

MAUNA KEA



Traditional Cultural Places

Evaluating whether a place has integrity of feeling and association involves exploring two questions:

(1) Does the place have an essential relationship with traditional cultural beliefs or practices?

(2) Does the relationship with the place endure, despite any alterations, in the view of those who value it?

Is the relationship essential?

Does the relationship endure?

Traditional Cultural Places



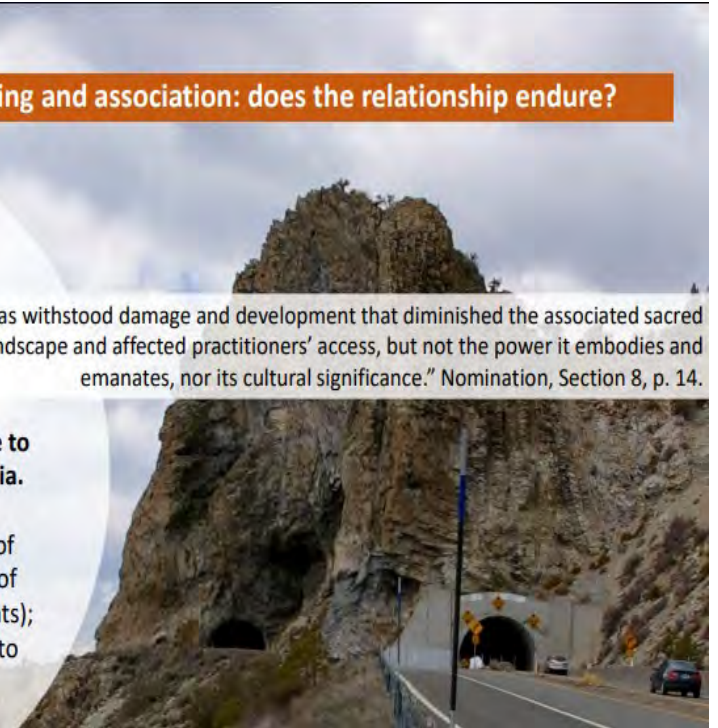
Example: assessing integrity of feeling and association: does the relationship endure?

De 'ek wadapush (Cave Rock) Nevada

"It has withstood damage and development that diminished the associated sacred landscape and affected practitioners' access, but not the power it embodies and emanates, nor its cultural significance." Nomination, Section 8, p. 14.

Significant for its traditional cultural value to the Washoe Tribe of Nevada and California.

Listed in 2017 as a site at the local level of significance with a period of significance of creation to present under Criterion A (events); and with a period of significance of 1863 to 1957 under Criterion C (design) for engineering & transportation.



De'ek wadapush, Nevada

Traditional Cultural Places

INTEGRITY-FROM WHOSE PERSPECTIVE?



Rice Lake, Michigan



Mt. St. Helens, Washington

Traditional Cultural Places



Kīholo-Puako Trail, Hawai'i Island



Kaho'olawe Island Archaeological District

Sites of Removal



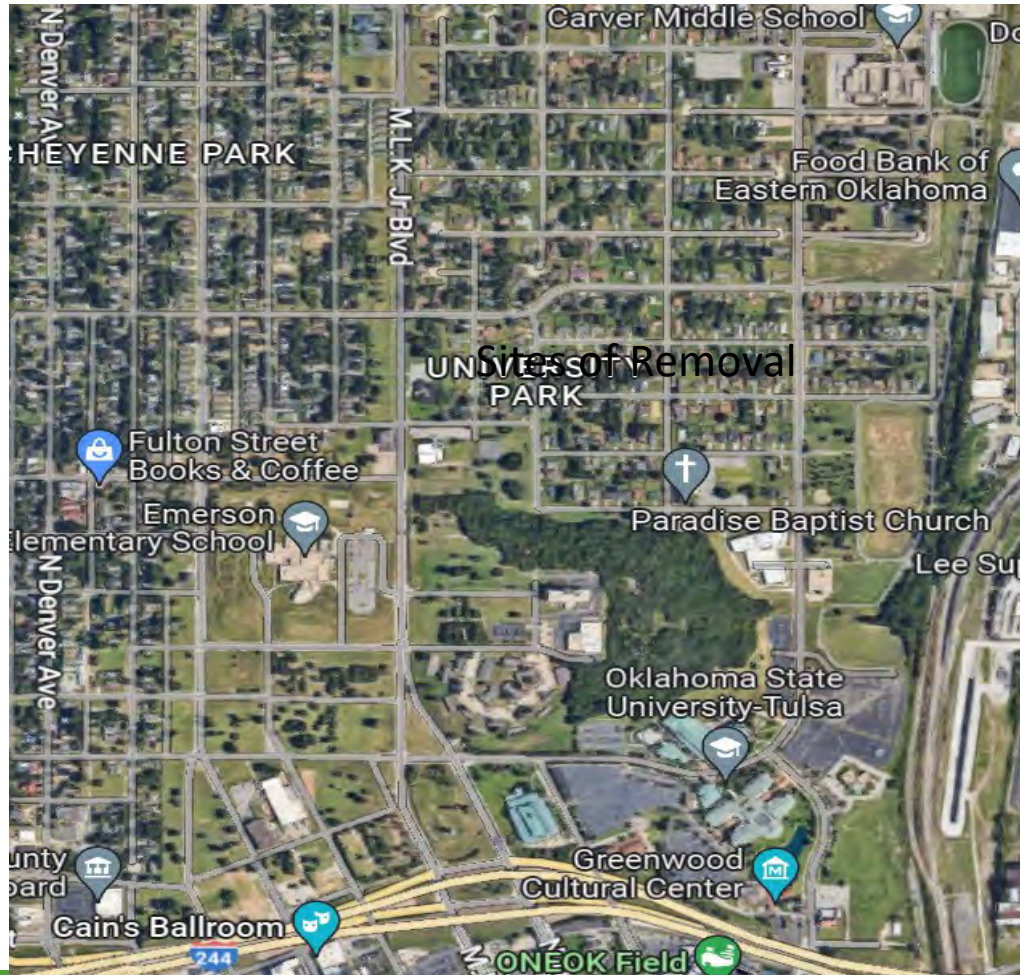
Honouliuli Internment Camp, O'ahu

CONCENTRATION CAMPS



Crystal City Internment Camp, Texas

Sites of Removal



TULSA RACE RIOT 1921



Sites of Removal



Google

Knowledge Check 4

All seven aspects of integrity are treated equally for all property types and all categories of historic significance.

TRUE

FALSE

Knowledge
Check 4

All seven aspects of integrity are treated equally for all property types and all categories of historic significance.

✓ **FALSE**

Audience Questions

CONTACT:

Jadelyn J. Moniz Nakamura, Ph.D.
Hawai'i-Pacific Islands CESU Science
Advisor
National Park Service, Regions 8, 9,
10 and 12
[Jadelyn Moniz-Nakamura@nps.gov](mailto:Jadelyn_Moniz-Nakamura@nps.gov)
Office: 808-985-6136

Paul R. Lusignan
Historian, National Register of
Historic Places
National Park Service
[Paul Lusignan@nps.gov](mailto:Paul_Lusignan@nps.gov)
Office: 202-354-2229

Elaine Jackson-Retondo, Ph.D.
Preservation Partnerships &
History Program Manager
National Park Service
Interior Regions 8, 9, 10, & 12
[Elaine Jackson-Retondo@nps.gov](mailto:Elaine_Jackson-Retondo@nps.gov)
Office: 415-623-2368
<https://www.nps.gov/history>

Katie Stephens
Historic Architect, AHL
kstephens@ahl.design
Office: 808-523-9636

Kiersten Faulkner
Executive Director
Kiersten@historichawaii.org
Office: 808-523-2900

Historic Hawai'i Foundation
680 Iwilei Rd. Ste. 690
Honolulu, HI 96817
Office: 808-523-2900
www.historichawaii.org

RESOURCES

Further Reading and Reference Materials

<https://www.nps.gov/subjects/nationalregister/publications.htm>

- National Register Bulletin 15: How to Apply the Criteria for Evaluation
- NRB 36: Evaluating Archaeological Properties
- NRB 40: Evaluating Battlefields
- NRB 32: Evaluating Properties Associated with Significant Persons
- NRB 38: Evaluating Traditional Cultural Properties
- NTHP Forum Journal: 50 Year Rule; <https://forum.savingplaces.org/viewdocument/50-years-reconsidered>
- NTHP Forum Journal: Landscapes and Preservation as Justice; <https://forum.savingplaces.org/viewdocument/forum-journal-pastforward-online-2>
- NTHP: Integrity and Racial Inequity Case Studies; <https://forum.savingplaces.org/blogs/special-contributor/2021/09/07/integrity-and-racial-inequity-case-studies>

MAHALO FOR
SUPPORTING THE
PROGRAMS AND
ACTIVITIES OF
HISTORIC HAWAI‘I
FOUNDATION

E-NEWSLETTER SIGN-UP

<https://historichawaii.org/newsletter-signup/>

JOIN

<https://historichawaii.org/join-us/>

GIVE

<https://www.paypal.com/paypalme/historichi>

CONTACT

Member@historichawaii.org

808-523-2900
