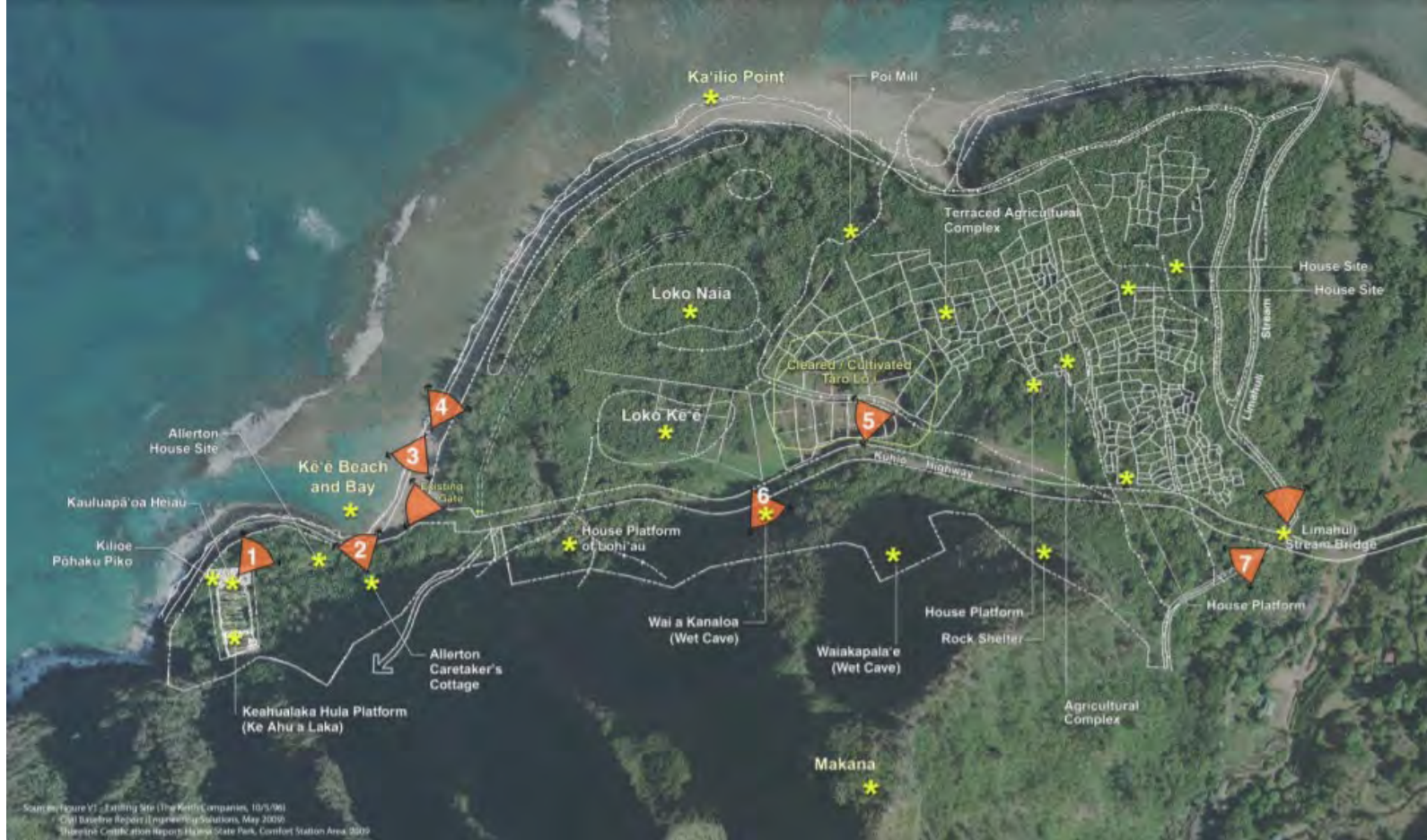


Preservation Planning & Historic Structure Reports



Tuesday, July 30, 2024

10:00 to 11:30 a.m. HST

**Presented by Historic Hawai'i Foundation
& National Park Service**

HISTORIC HAWAI‘I FOUNDATION



Celebrating 50 Years of
Preserving Hawai‘i’s Places

A statewide non-profit advocacy organization, **Historic Hawai‘i Foundation** encourages the preservation of historic buildings, sites, structures, objects and districts relating to the history of Hawai‘i.

We help people save Hawai‘i’s historic places.

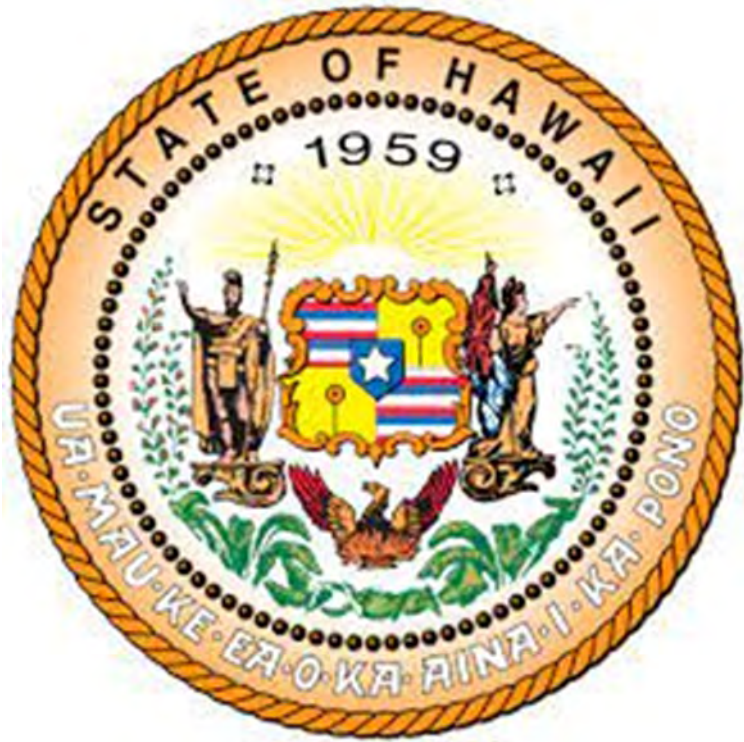
www.HistoricHawaii.org



The **National Park Service** preserves unimpaired the natural and cultural resources and values of the National Park System for the enjoyment, education, and inspiration of this and future generations. The Park Service cooperates with partners to extend the benefits of natural and cultural resource conservation and outdoor recreation throughout this country and the world.



The **Hawai'i State Historic Preservation Division** is comprised of three branches, Architecture, Archaeology, and History & Culture, that together collectively strive to preserve and protect Hawai'i's historic identity.





American Planning Association
Hawaii Chapter

Creating Great Communities for All

The American Institute of Certified Planners (AICP) is the APA's professional institute providing recognized leadership nationwide in the certification of professional planners, ethics, professional development, planning education, and the standards of planning practice.

<https://hawaii.planning.org/>



The AIA is the voice of the architectural profession and the resource for its members in service to society. Based in Washington, D.C., the American Institute of Architects (AIA) has been the leading professional membership association for licensed architects, emerging professionals, and allied partners since 1857.

AIA Honolulu is a Chapter of the AIA representing and serving members on the island of O‘ahu, Hawai‘i, Kaua‘i and Lāna‘i. Within these islands, AIA Honolulu represents and serves over 800 individual member architects, associates, and allied design professionals.

<https://www.aiahonolulu.org/>

Speakers

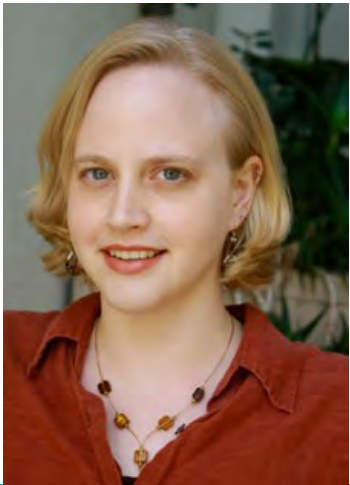


Kiersten Faulkner is the chief executive of Historic Hawai'i Foundation and oversees all aspects of its preservation programs, strategic planning, business lines and operational matters. She holds a Master of Arts in Urban and Environmental Policy from Tufts University and is a member of the College of Fellows of the American Institute of Certified Planners (FAICP).

Speakers



Michael Miller is the Bureau Historical Architect and Program Lead for the Historic Structures Program within the Park Programs & National Heritage Areas of the Cultural Resources, Partnerships and Science Directorate (CRPS) of the National Park Service. He has 30+ years of experience working with historic buildings, preservation planning, historic resources stewardship, campus heritage planning, and managing major capital historic preservation projects. Prior to working with the National Park Service, Miller served as Architect within the Architecture Branch of the Public Buildings Service (PBS) of the General Services Administration (GSA) within the Southeast/Sunbelt Region in Atlanta.



Megan Alvarez, Archaeologist IV at the Hawai'i State Historic Preservation Division, conducts historic preservation reviews that include formal preservation planning to promote active site stewardship of the state's tangible heritage, in compliance with state and federal regulations. She has 20+ years' experience in archaeology across North America, Europe, and the Pacific. Megan received her PhD in Anthropology from the University of Chicago, MA in Archaeology from Queen's University Belfast, and BA in Anthropology from the College of William and Mary in Virginia.

Speakers



Kimi Mikami Yuen, Vice President of PBR HAWAII, manages a variety of planning and physical design projects as well as the successful preparation of land use permits, environmental assessments and environmental impact statements, regional and long-range land use plans, and master plans. She was the project manager for the Hā'ena State Park Master Plan and EIS, which is now held as an example of community-based planning and managed tourism and was awarded the Historic Hawai'i Foundation's Programmatic Preservation Honor Award in 2021.



Alan Carpenter serves as the Assistant Administrator of the Hawaii State Parks Division, a role in which he brings extensive experience and dedication to the preservation and enhancement of Hawaii's natural and cultural resources. With a strong background in cultural resource management and public service, Mr. Carpenter plays a pivotal role in overseeing the state's diverse park system, which includes iconic sites like Diamond Head, Nāpali Coast, and Iolani Palace.

ABOUT THIS COURSE

Learn the definition, purpose and benefits of preservation plans for historic properties and heritage sites

Learn the relationship between various plans and technical documents, including historic structure reports, condition assessments, archaeological investigations, maintenance plans and inventories.

Understand the role of planning and preparation for long-term site and property stewardship

Learn the references and scope for State-required preservation plans for archaeological sites

View a case study example of a preservation planning project in Hawai'i

Interaction

Chat Box: use the chat to ask a question at any time. We will address questions after the presentation is finished.

Preservation Planning & Historic Preservation Plans



MICHAEL W MILLER, AIA
BUREAU HISTORICAL ARCHITECT
CULTURAL RESOURCES, PARTNERSHIPS & SCIENCE DIRECTORATE
NATIONAL PARK SERVICE

Historic Preservation Planning & Preservation Reports/Studies

The fundamental concept for NPS Cultural Resource Management (CRM) involves three key functions.

Preservation Planning is one of the three “legs” for CRM:

Research: Research is a prerequisite for treatment and provides a basis for decision-making by managers. Situations benefiting from research-generated information range from review of weekly maintenance projects to long-term planning projects. Research contributes to interpretation, compliance, and facility design. To accomplish these purposes, research typically concentrates on three broad aspects of a historic structure: its historical, technical, aesthetic, or scientific associations; its developmental history or evolution; and the nature, performance, and capability of its materials and systems.

Planning: Planning for historic structures encompasses such diverse activities as involvement in park planning, facility design, preparation of maintenance work procedures, and compliance. **The central purpose of all such activities is to identify ways of protecting cultural resources while achieving other management objectives.** This is usually best done by thoughtful evaluation of a diverse range of alternatives.

Stewardship: For historic structures, stewardship focuses on five major activities: (a) control of treatment and use, (b) monitoring conditions of deterioration and structural failure, (c) protecting structures from human and environmental threats, (d) retaining or delegating responsibility for structures, and (e) developing the skills, knowledge, and attitudes needed to support the program.



Birmingham Civil Rights National Monument: Leaders of the Southern Christian Leadership Conference resided at the Gaston Motel during the campaign to desegregate Birmingham.

Historic Preservation Planning

Case Study---University System of Georgia

IN 2005, CAMPUS HISTORIC PRESERVATION PLAN GUIDELINES WERE DEVELOPED FOR THE UNIVERSITY SYSTEM OF GEORGIA - BOARD OF REGENTS THROUGH A GRANT BY THE CAMPUS HERITAGE PROGRAM OF THE GETTY FOUNDATION.

THESE GUIDELINES, WHICH SERVE AS A COMPANION DOCUMENT TO THE UNIVERSITY SYSTEM OF GEORGIA MASTER PLANNING GUIDELINES, SOUGHT TO INTEGRATE HISTORIC PRESERVATION PLANNING INTO THE UNIVERSITY SYSTEM OF GEORGIA CAMPUS MASTER PLANNING PROCESS.

THE GUIDELINES STATE THE HISTORIC PRESERVATION MASTER PLAN SHOULD INCLUDE THE FOLLOWING INFORMATION:

- **CAMPUS HISTORIC CONTEXT.**
- **IDENTIFICATION AND EVALUATION OF CULTURAL RESOURCES.**
- **RECOMMENDATIONS FOR TREATMENT AND USE OF CULTURAL RESOURCES.**

The Challenge: Multiple Campuses:

- *Urban/Rural Large/Small Old/New*



Georgia Institute of
Technology-Atlanta



Augusta University,
Augusta



Valdosta State University
Valdosta



UNIVERSITY
SYSTEM OF
GEORGIA BOARD
OF REGENTS

PHYSICAL
MASTER
PLANNING
TEMPLATE

Copyright Notice (c)1996
University System Of Georgia

All rights reserved. This "template" is for the exclusive use of the Institutions of the University System of Georgia. No part of this "template" may be reproduced, stored in a retrieval system, or transmitted, in any form or by any means, electronic, mechanical, photocopying, recording, or otherwise without the express permission of the Owner. Any attempt to duplicate this material without the express permission of the Owner is prohibited. Contact the Owner at ldaniels@mail.regents.peachnet.edu

Campus Historic Preservation Plan Preservation Reports/Plans

Campus Historic Preservation Plan Guidelines



PREPARED FOR THE UNIVERSITY SYSTEM OF GEORGIA, BOARD OF REGENTS
2005

Goals of the USG Campus Historic Preservation Planning Initiative:

- **Establish a future direction or vision for historic and cultural resource preservation and protection at each institution and provide guidance to staff and decision makers for treatment of the historic resources.**
- **Inform the Campus Physical Master Plan process by providing historic and cultural resource information and articulating the Institution's vision for integrating these resources into the developing campus environment.**
- **Provide procedural guidelines that will assist the Institution in meeting its compliance responsibilities with regard to existing Federal, State and local historic preservation legislation and policy.**



Historic Preservation Planning

Case Study----University System of Georgia

Community

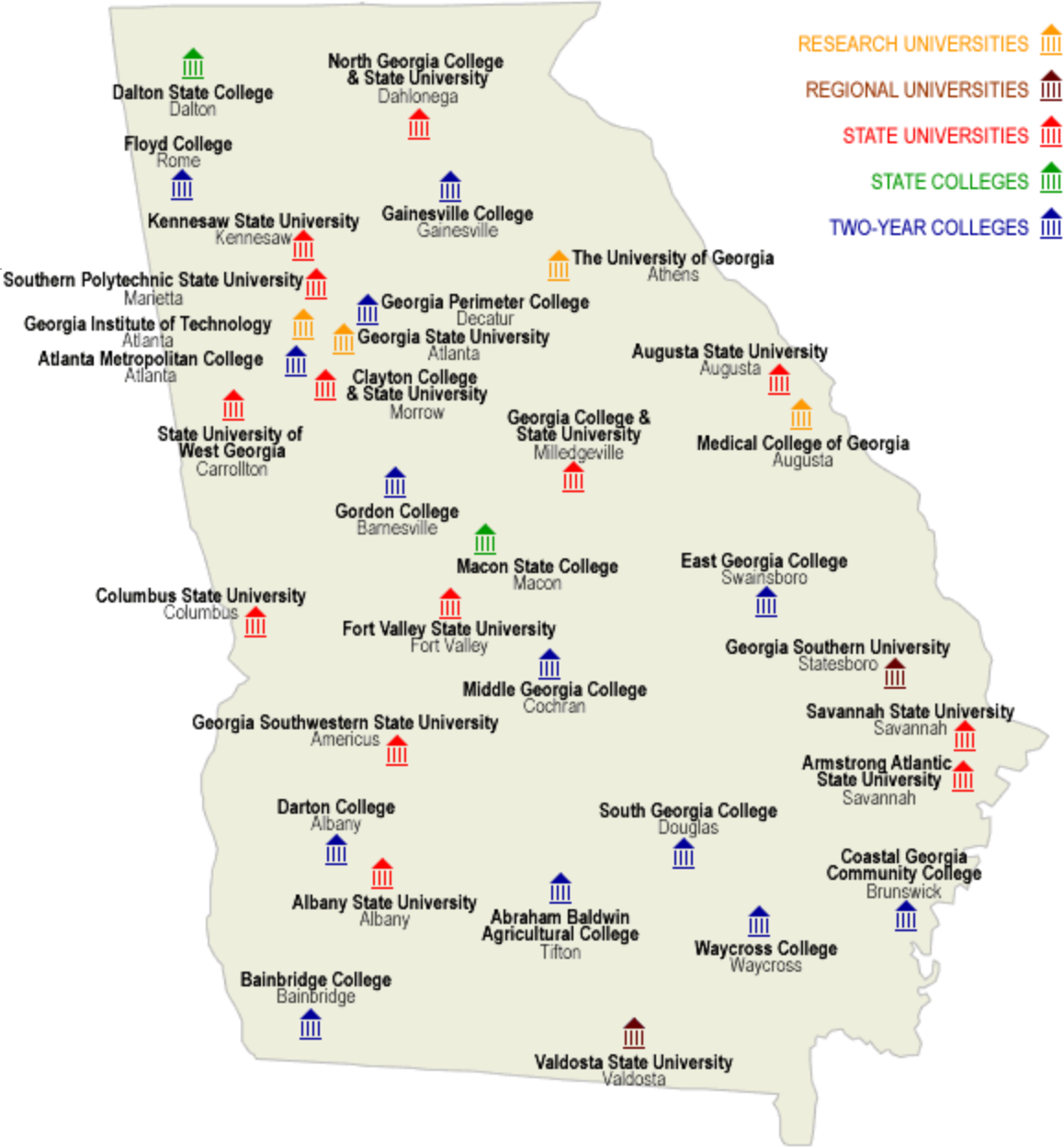
- 345,000 students
- 50,000 faculty & staff
- 26 college & universities

Physical Environment

- 9,000 acres (main campus)
- 50,000 acres (total holdings)
- 3,600 buildings
- 107 Million Gross S.F.

Capital Development

- > \$4.5B in last ten years



Historic Preservation Planning

Case Study----University System of Georgia



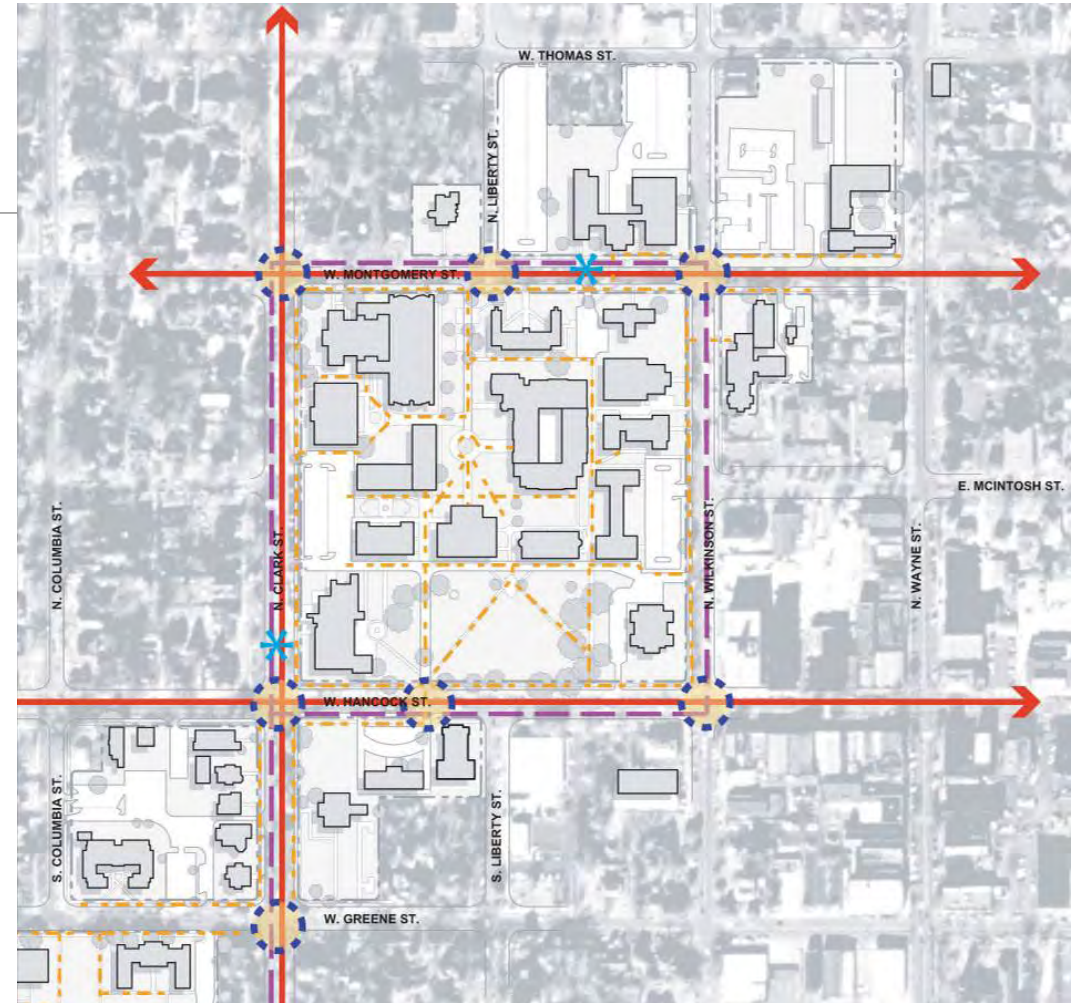
Pilot Institution: Georgia College, Milledgeville, Georgia

Campus Historic Preservation Planning

University System of Georgia

Pilot Institution-Georgia College, Milledgeville, GA

- Increase in number of vehicles and demand for more parking
- Continual growth in buildings (both size and number) and programmatic requirements
- Design decisions (master plan, demolitions, rehabilitation, architectural character and placement of new buildings)



*Georgia College & State University
Traffic Analysis at Main Campus*

Campus Historic Preservation Planning

University System of Georgia

Pilot Institution-Georgia College, Milledgeville, GA

1. Incorporate Historic Preservation into new Master Planning Guidelines.
2. Implement Campus Historic Preservation Plan at Pilot Institution.
3. Create education program for all USG constituents.



Campus Historic Preservation Planning

University System of Georgia

Challenges for Implementing a Campus Historic Preservation Planning Template

MULTIPLE CAMPUSES

- Rural, Urban, Old, New, etc.
- Varying degrees of existing preservation planning and resource data among Institutions

MULTIPLE USERS

- Administrators, Facility Managers, Contractors, Faculty, Students, etc.

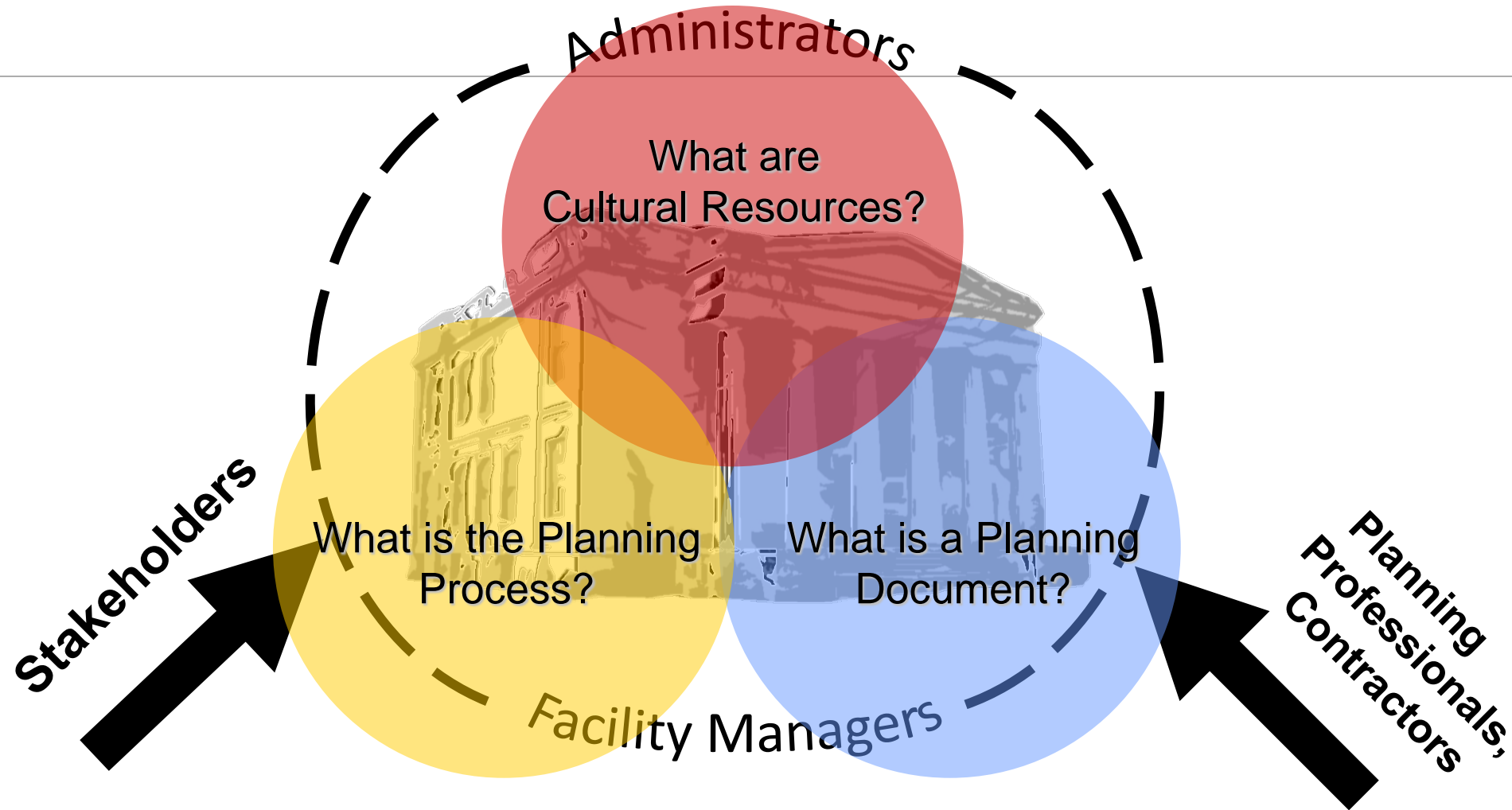
FUNDING

- Variety of available resources among Institutions requires a range of SOWs to be defined



Campus Historic Preservation Planning

University System of Georgia



UniCampus Historic Preservation Planning University System of Georgia

What is Historic?



Campus Historic Preservation Planning

University System of Georgia

National Criteria

The quality of significance in American history, architecture, archeology, engineering, and culture is present in districts, sites, buildings, structures, and objects that possess integrity of location, design, setting, materials, workmanship, feeling, and association and

- (a) that are associated with **events** that have made a significant contribution to the broad patterns of our history; or
- (b) that are associated with the lives of **persons** significant in our past; or
- (c) that embody **distinctive characteristics** of a type, period, or method of construction, or that represent the **work of a master**, or that possess **high artistic values**, or that represent a significant and distinguishable **entity** whose components may lack individual distinction; or
- (d) that have yielded, or may be likely to yield, information important in **prehistory or history**.



Old Governor's Mansion
Georgia College, Milledgeville, Georgia

Campus Historic Preservation Planning

University System of Georgia

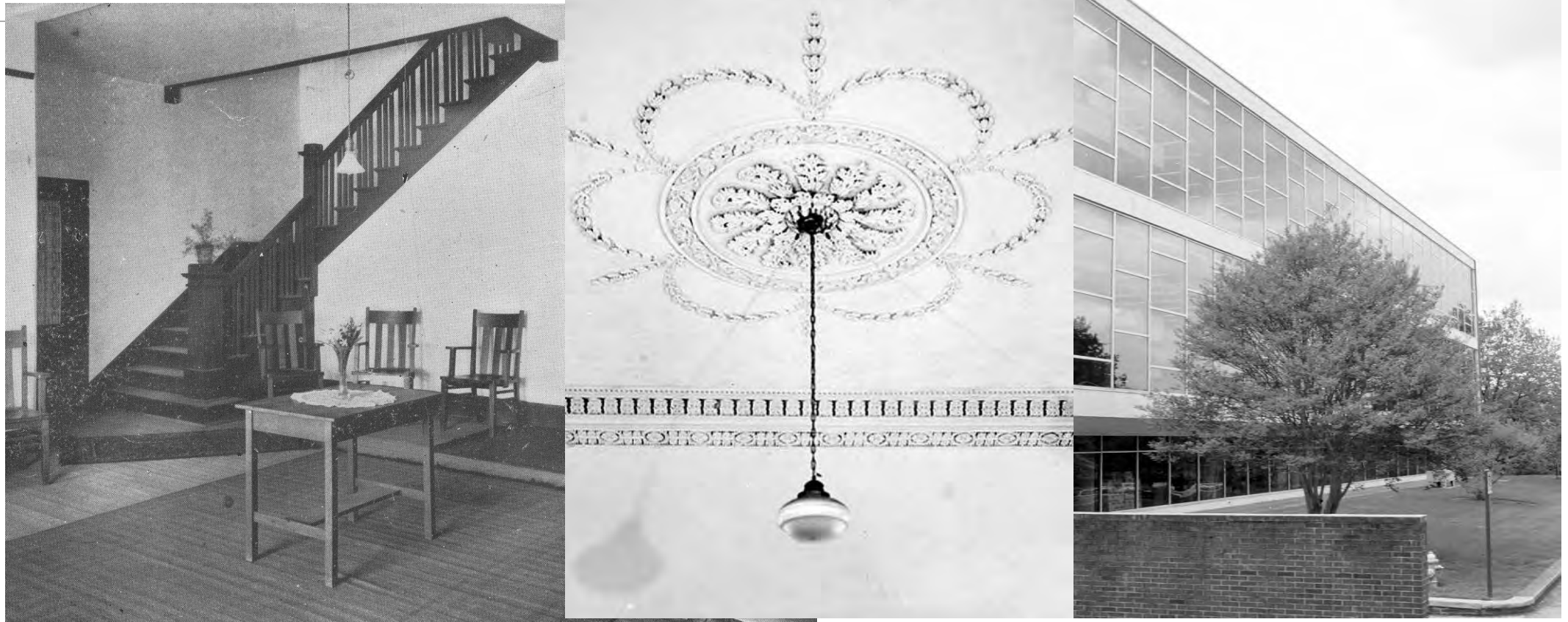
Institutional Criteria & University System Institutional History



Campus Historic Preservation Planning

University System of Georgia

Historic Architecture



Resource Definition - *historic architecture is a constructed work, consciously created to serve some human activity.*

Campus Historic Preservation Planning

University System of Georgia

Historic Architecture/Buildings

- *Historic resources are primarily concentrated at 22 of USG’s 26 institutions.*
- *42% (Approximately 1,500 of the 3,633 Buildings) are over 50 years old.*



*Price Memorial Hall
University of North Georgia*

University System of Georgia Facilities Inventory		
Owned and Public Private Ventures Financed Buildings		
Fall 2023		
Year Constructed	Number of Buildings	Total Building GSF
<1900	91	915,117
1900-1945	366	7,085,757
1946-1969	777	18,995,402
1970-1989	812	19,674,310
1990-1999	490	17,021,683
2000-2009	653	29,352,626
2010-2024	444	14,689,924
Grand Total	3633	107,734,819

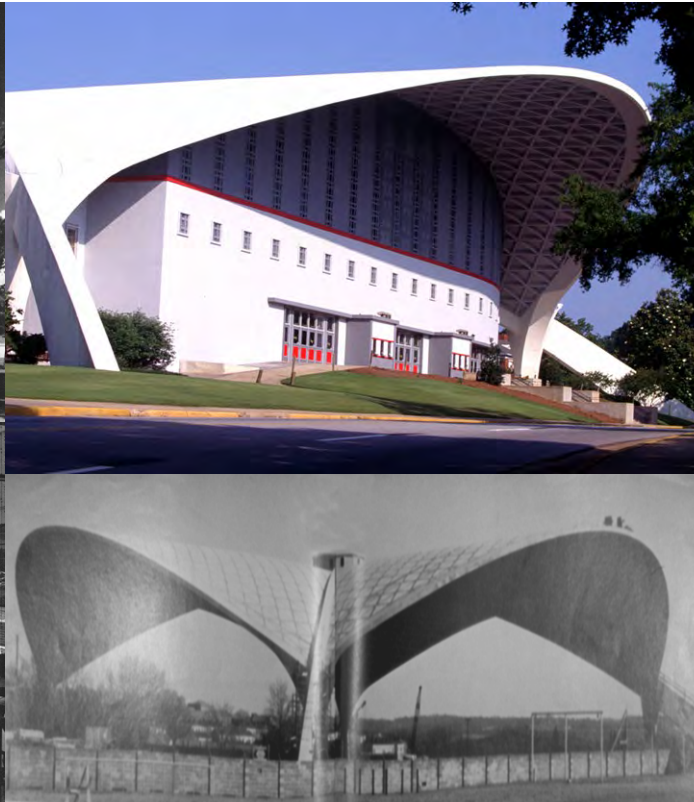
Campus Historic Preservation Planning

University System of Georgia

Historic Architecture – Modern Movement



UGA-GA Center for Continuing Education
Stevens and Wilkinson;
Thomas Church 1956



UGA-Stegeman Coliseum
Cooper, Barrett,
Skinner, & Woodbury 1963



Georgia Tech-Price-Gilbert Library
Bush-Brown, Heffernan & Gailey 1953

Campus Historic Preservation Planning

University System of Georgia

Cultural Landscapes



Resource Definition - a historic landscape is a geographic area that reflects the work of both nature and man. These landscapes can be associated with a historic event, activity, or person or they may exhibit other cultural or aesthetic values.

Campus Historic Preservation Planning

University System of Georgia

Archaeological Resources



Resource Definition - archaeology is the scientific recovery of information about how people lived in the past, based on the things they left behind at a site.

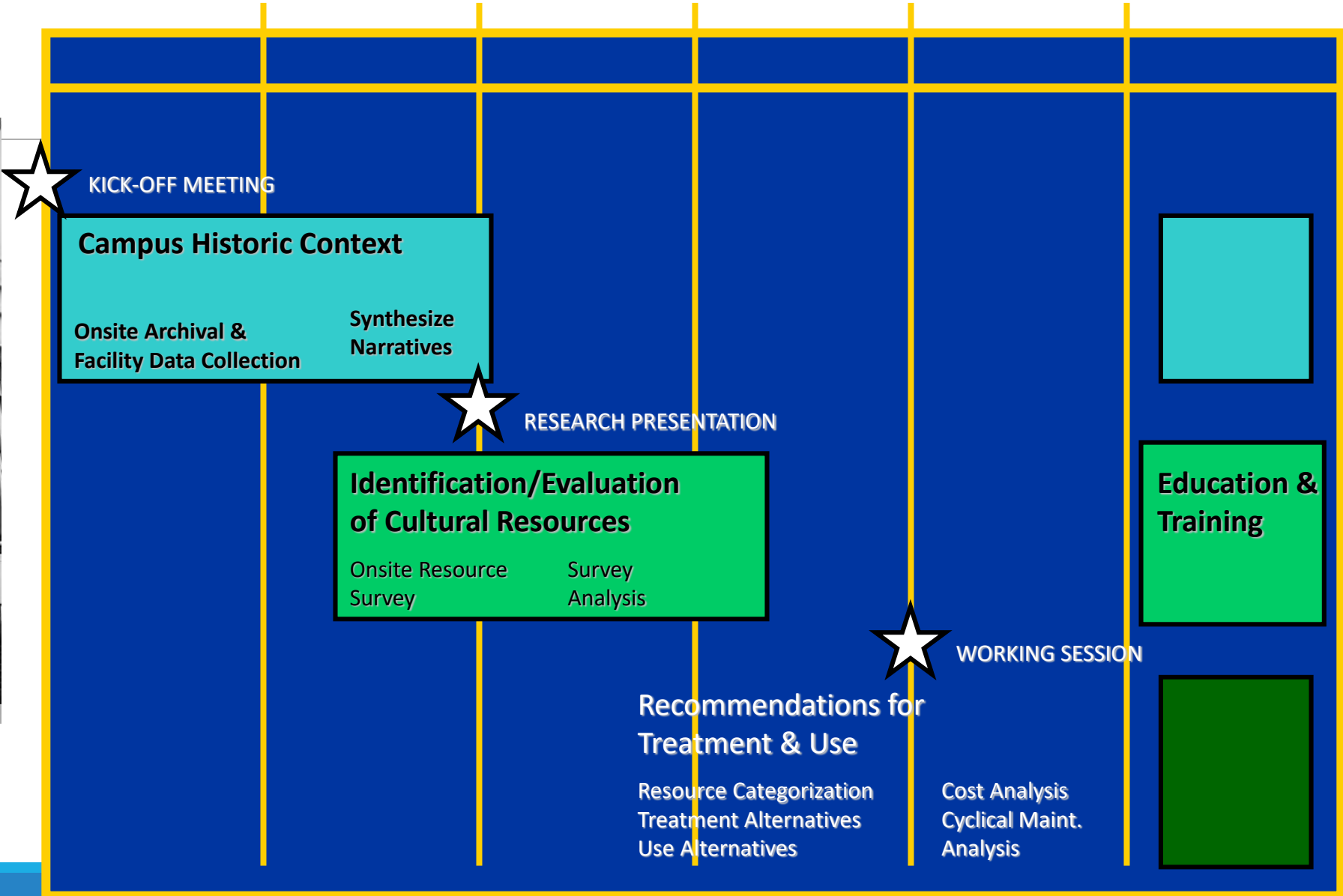
Campus Historic Preservation Planning

University System of Georgia

CHPP Planning Process



Georgia State University-Atlanta



Campus Historic Preservation Planning

University System of Georgia

Historic Context of each University or College



From 2nd-District Congressional A&M School... ..to Abraham Baldwin Agricultural College.

Campus Historic Preservation Planning

University System of Georgia

Identification and Evaluation of Cultural Resources



Campus Historic Preservation Planning

University System of Georgia

Identification and Evaluation of Cultural Resources



III-A-3: Building Use and Condition
Page 5

LEVEL 1 SURVEY				
DATE	BUILDING NAME	USG #	NRHP STATUS	SF
1896	Atkinson Hall	1063	Listed National Register (Individual)	58,44
1937	Beeson Hall	5056	Listed National Register (District)	28,62
1928	Bell Hall / Annex	1056 / 1156	Listed National Register (District)	32,309 18,90
1900	Blackbridge Hall	8050	Listed National Register (District)	5,16
1902	Campus Information Center, Bone House	2070	Listed National Register (District)	3,25
1921-1923	Cathy Alumni Center	9021	Listed National Register (District)	5,10
	Wing, "Coca-Cola"	1077	Listed National Register (District)	8,70
		6014	Recommended Eligible	36,03
		1055	Listed National Register (District)	31,53
	ansion	1057	National Historic Landmark	21,91
	ne	9028	Listed National Register (District)	3,80
	es, "HPER"	9024	Listed National Register (District)	4,20
		4014	Listed National Register (District)	41,73

III-A-3: Building Use and Condition
Page 11

LEVEL 2 SURVEY
Health Sciences, "HPER"
USG #: -014
Address: W side of N Williamson St. S of Montgomery St Georgia/National Register Status: Listed National Register (District)

1. ARCHITECTURAL DATA

Construction: 1939
Architect: W. Elmer Dunswoy, Jr.
Of: Macon, GA
Original Use: Classrooms
Current Use: Classroom
SF: 41,735
Footprint: 3 blocks, 69' 9" x 163'
Levels: front and rear blocks; two, 25' to eave



1.1 Known Alterations
1944-45 Gym addition/Drill Hall
Dept. of Construction and Maintenance, USG
1958 Electrical upgrade
Southern Engineering Co. *
1974 Addition
Adams and Homan *
1990 Renovation, retaining windows
designer unknown

* denotes drawings on file at facilities office.

1.2 Current Conditions

1.2.1 Exterior Features

H Roof type/material: flat-built-up/modified bitumen; lip - metal, standing seam
front wing: bowed-cornice with mutules, wood, 2.5' high, 2' deep; middle wing: bowed-cornice, wood, 1.5' high, 10' deep; rear wing: can stone cap

Chimney location/material: N/A

H Exterior material(s): brick, common bond, machine-made, stucco, glass block
H Foundation material(s): stucco over concrete, brick, continuous, 10' water table
H Porches: front (E): portico, 2 story, partial, 4 Ionic columns, brick & gable; side (S): stoop, 1 story, partial, brick, gable
H Stairs: front (E): circular, double, cast stone; side (S): 2 stairs, concrete
H Windows: double-hung, sash (flat-headed, 8/8, wood, rectangular); factory sash (flat-headed and round-headed, steel, rectangular); fixed (half-moon and circular, wood, divided lite)
H Exterior Doors: front (E): wood panel with transoms; side (S): wood panel with

III-A-3: Building Use and Condition
Page 54

LEVEL 3 SURVEY
Ennis Hall
USG #: 1055
Address: SE corner of Hancock and Clark Sts Georgia/National Register Status: Listed National Register (District)

1. ARCHITECTURAL DATA **OVERALL CONDITION: POOR**

Construction: 1918
Architect: likely J. R. Macfarlan
Of:
Original Use: Student Residence
Current Use: Offices, Student Health Services
SF: 31,530
Footprint: 44' x 150'
Levels: four plus basement

1.1 Known Alterations

1975 30%
designer unknown
1984 HVAC installation
Atkinson Brock and Pennington *
1993 Renovation of portico
Sarver and Ritchie Inc. **

* denotes drawings on file at facilities office.

1.2 Current Conditions

1.2.1 Exterior Features

H Roof type/material: combination parapet gable and flat; modified bitumen; copper gutters on porch; 11 downspouts

Condition: GOOD
Repair: none observed
Replace: none observed

H Cornice/Eaves: wood dentel moulding with mutules (2' deep x 14" high)

Condition: GOOD
Repair: none observed
Replace: none observed

N Chimney location/material: outside add-on; brick

Condition: GOOD-FAIR
Repair: none observed
Replace: none observed



Investigation is the critical first step in planning an appropriate treatment – understanding how a resource has changed over time and assessing levels of deterioration.

Campus Historic Preservation Planning

University System of Georgia

Issues of Treatment & Use

Secretary Interior's Standards for Treatment of Historic Properties:

Preservation
Restoration

Rehabilitation
Reconstruction

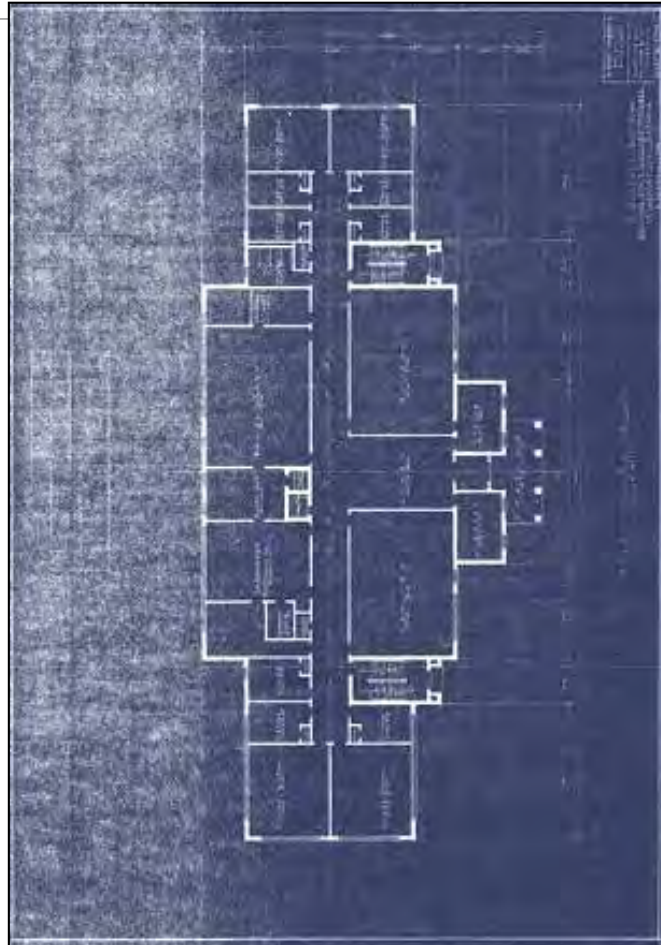


Campus Historic Preservation Planning

University System of Georgia

Issues of Treatment & Use

Vintage Building Stock & Resource Compatibility



Campus Historic Preservation Planning

University System of Georgia

Issues of Treatment & Use Adjacent Historic Neighborhoods, Parking, Pedestrians



Relationship to Other Preservation Planning & Reports



Preservation Planning & Other Types of Plans/Reports

Historic Structure Report

Georgia Institute of Technology

HISTORIC STRUCTURE REPORT

North Atlanta Baptist Church
Sanctuary Building & Education Building
(490 Tenth Street NW / Building 128)



June 2016

Prepared for
Office of Capital Planning and Space Management

Prepared by
Grashof Design Studio

A Completed HSR provides:

- The primary planning document for decision making about the treatment option for a historic structure.
- Documentation to help establish significant dates of construction.
- A guide for budget & scheduling planning for work on structures.
- A basis for design of recommended treatment/work.
- Compilation of key info on history, significance and condition.
- A summary of known info & conditions at the time of investigation.
- A readily accessible reference document for owners, managers working on or using the historic structure.
- A tool for use in interpretation based on historical & physical evidence.
- A resource for further investigation and research.
- A record of completed work as well as a bibliography of archival documentation relevant to the structure.

Preservation Planning & Other Types of Plans/Reports

Historic Window Survey



A Completed Historic Window Survey provides:

- Direction for determining whether REPAIR or REPLACEMENT is the appropriate treatment for historic windows on a historic structure.
- Documents the existing condition of the windows and whether they are historic or non-historic.
- Assistance in determining if certain windows or groups of windows can be replaced so as to maintain the historic appearance along the various facades of a building.
- A basis for design of recommended treatment/work.
- Details which components of an individual window are deteriorated (sash, rail, stiles, muntin/mullion, or framing).
- A Planning tool for pulling together a detailed cost estimate for window repair and/or replacement.

Preservation Planning & Other Types of Plans/Reports

Building Preservation Plan

A Building Preservation Plan (BPP):

Building Preservation Plan

Federal Building and U.S. Courthouse
Dothan, Alabama
GSA Building Number: AL0019



Prepared by:

Lord, Aeck & Sargent Architecture
213 S. Ashley Street Suite 200
Ann Arbor, MI 48104

and

New South Associates
6150 E. Ponce de Leon Avenue
Stone Mountain, GA 30083

- Is the key building preservation tool utilized by the General Services Administration (GSA) for the care, maintenance, and treatment of their portfolio of Federally owned buildings.
- Similar to an HSR, the Building Preservation Plan (BPP) documents the historical context/development of the structure, provides a building analysis and existing condition assessment, recommends treatment options and includes outlining the appropriate preservation zones within the building:
 - Restoration Zone
 - Rehabilitation Zone
 - Renovation Zone
- Similar to an HSR, the BPP typically, but not always addresses a single building, rather than a group or series of buildings within a complex.
- A basis for design of recommended treatment/work. GSA's BPP's typically provide detailed numbers/linear feet of building components & materials.
- Is a readily accessible reference document for owners, managers working on or using the historic structure.
- Is a tool for pulling together a detailed cost estimate.

Preservation Planning & Other Types of Plans/Reports

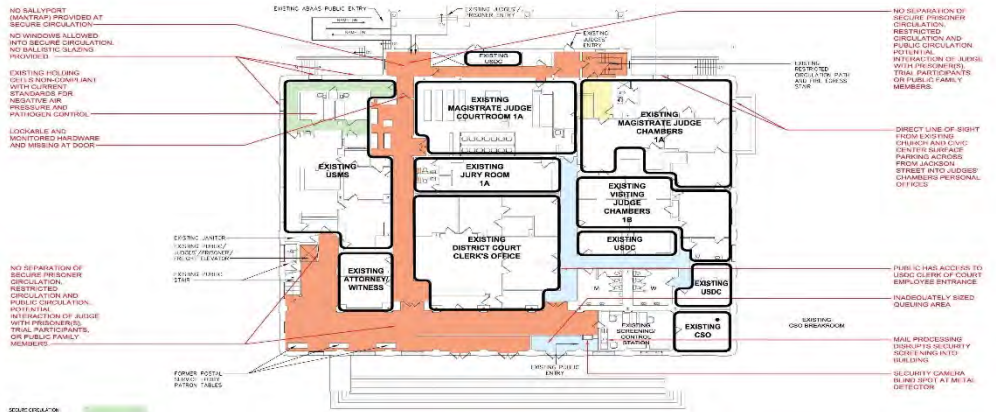
Building Reuse Studies/Plans

Building Reuse Study or Plan:



Table of Contents

●	1	INTRODUCTION	1
		CSP Project Study Overview	3
●	2	PRELIMINARY DATA SUMMARY	5
		Facility Overview	7
		Court Operations Data	8
		Building Data	10
		Security Deficiencies Analysis	13
●	3	CONCEPT SOLUTIONS FOR SECURITY IMPROVEMENTS	25
		Concept Solutions	27
		Concept Solutions Budget Estimates	51
●	4	PREFERRED ALTERNATIVE	57
		Preferred Alternative Concept Solution	59
		Preferred Alternative Budget Estimate	72
●	5	APPENDIX	75
		Eliminated Options: Option 2	77



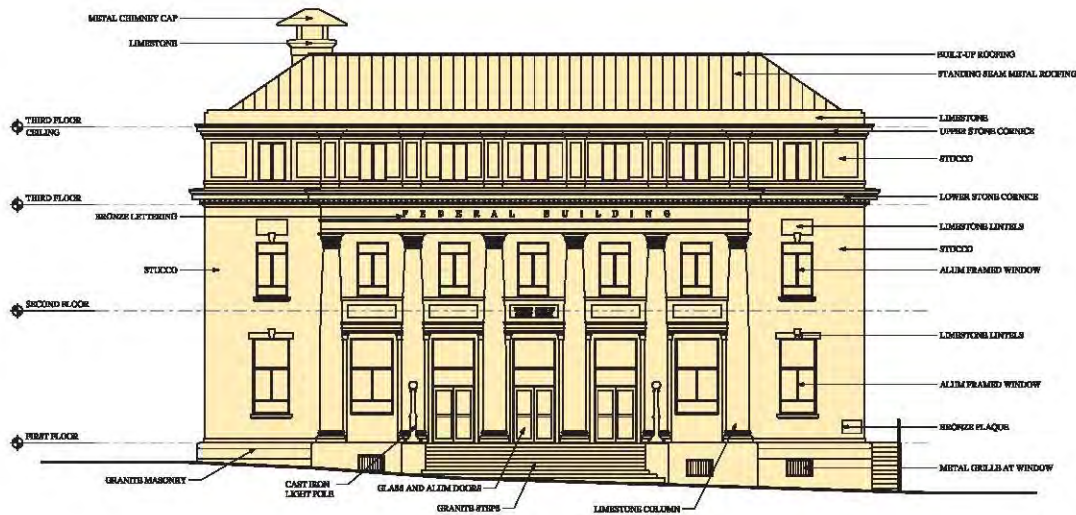
Preservation Planning & Other Types of Plans/Reports

As-Built Construction Documents

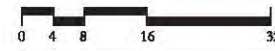
As-Built Construction Documents:



- As-Built Construction Documents provide invaluable documentation of how the building evolved over time from its original construction to various additions or changes made to the building over time.



SOUTH ELEVATION



Preservation Zoning

- Restoration Zone
- Rehabilitation Zone
- Renovation Zone



Preservation Planning & Other Types of Plans/Reports

Historic Preservation

Technical Procedures

Preservation (GSA) Technical Procedures:

- GSA has developed a series of in-depth technical procedures that parallel the CSI Division Specifications and are excellent resources for inclusion in Scope of Work (SOW) documents. There are well over 470 Technical Procedure Topics related to Historic Preservation Materials/Issues.

GSA U.S. General Services Administration

Buy through us | Sell to government | Real estate | Policy and regulations | Small business | Travel

Home > Real estate > Historic preservation > Historic Preservation Policy, Tools & Resources > Preservation Tools & Resources > Technical Procedures

09720 WALLPAPER CONSERVATION AND RESTORATION

CSI Division: Division 9 - Finishes
Section: Wallpaper Coverings
Last Modified: 06/03/2019

SECTION 09720 - WALLPAPER CONSERVATION AND RESTORATION

PART 1 - GENERAL

1.1 RELATED DOCUMENTS

A. Drawings and general provisions of the Contract, including General and Supplementary Conditions and Division 1 Specification Sections, apply to this Section.

1.2 SUMMARY

A. This Section includes the following:

1. Wallpaper removal.
2. Removal of adhesives and disjuncting of plaster prior to painting.
3. Surface repairs to plaster.
4. Wallpaper conservation including cleaning, consolidation, and reattachment.
5. Wallpaper replication.
6. Selection and installation of authenticated period wallpaper.

B. Related Sections include the following:

1. Division 9 Section "Plaster Conservation" for structural repairs to existing plaster.

C. Intent. The intent of the wallpaper conservation is to remove layers of wallpaper that post-date the property's period of significance, while retaining and conserving papers dating to the period of significance ("Project Restoration Period"). See Appendix - Pre Treatment Assessment for analysis of significant papers.

1. The removal of outer layers of paper may reveal papers that have not been previously documented. Great care must be taken during removal of later papers so the remnants of earlier paper are salvaged in a way that they can be documented. If the papers are determined to be Project Restoration Period papers, the wallpaper fragments will be conserved in situ.
2. If it is not possible to successfully remove outer layers without damaging lower layers, the wallpaper "sandwich" may be removed from the wall and separated in the conservation laboratory. Project Restoration Period papers will be reattached to the wall in the exact locations in which they were discovered.
3. Areas of dissimilar surface finishes should be tested for cleaning methods which avoid the use of water, such as ethanol, prior to undertaking wallpaper removal or cleaning in these areas.

1.3 SUBMITTALS

Technical Procedures | GSA

Title	Division	Procedure Type	Section
Cleaning Door Hardware	Division 3 - Concrete	Specifications	Hardware
Cleaning Exterior Copper Components	Division 5 - Metals	Specifications	Ornamental Copper
Cleaning Historic Glass	Division 3 - Concrete	Specifications	Glass & Glazing
Cleaning Historic Masonry: Removal of Atmospheric Soiling, Stains, and Biological Growth	Division 4- Masonry	Specifications	Masonry Cleaning
Cleaning Interior Limestone Walls	Division 4- Masonry	Specifications	Limestone
Cleaning Masonry Using Ammonium Fluoride Treatment	Division 4- Masonry	Specifications	Masonry Cleaning
Cleaning Ornamental Bronze Light Fixtures	Division 26 - Electrical	Specifications	Lighting Fixtures
Cleaning Polished Black Granite	Division 4- Masonry	Specifications	Granite
Cleaning Unpolished White Granite	Division 4- Masonry	Specifications	Granite
Cleaning Blocked Internal Storm Drains	Division 7 - Thermal and Moisture Protection	Specifications	Iron Roof Drain

Showing 1 to 477 of 477 entries

Preservation Planning & Other Types of Reports



End of Presentation

MICHAEL W MILLER, AIA

BUREAU HISTORICAL ARCHITECT

CULTURAL RESOURCES, PARTNERSHIPS & SCIENCE DIRECTORATE

NATIONAL PARK SERVICE

State of Hawai'i Archaeology Preservation Plans

Megan Alvarez
Hawai'i State Historic Preservation Division



Why plan for preservation with SHPD?



LEGAL TRIGGERS REQUIRING SHPD INVOLVEMENT

HRS §6E-8 – state or county agency projects

HRS §6E-42 – state or county permitted projects

HRS §6E-10 – projects where construction, alteration, disposition, or improvement will affect a historic property on the Hawai'i Register of Historic Places

NHPA Section 106 – federal agency projects, or those permitted or funded by a federal agency

VOLUNTARY INVOLVEMENT OF SHPD

- **History & Culture Branch** - Because most “archaeological historic properties” in Hawai'i are also culturally sensitive sites associated with Traditional Hawaiian practices and important to the Native Hawaiian community.

- **Archaeology Branch** - Because archaeological deposits are a non-renewable resource—once impacted they can never be restored.

To get SHPD guidance on the variety of topics and approaches agencies and stewardship groups should be considering to achieve best outcomes and safeguard from inadvertently impacting a historic property while working to preserve it.

To contribute to SHPD's evolving knowledge of how best to plan for the preservation of the state's tangible heritage while promoting the perpetuation of cultural practices.



Who is involved in planning?



OUTSIDE OF SHPD

Landowner – state agency, large private institution, or private individual

Project Proponent – landowner, institution, local interest group, Native Hawaiian Organization (NHO), or other ethnic community organization who alone or in combination is interested in stewardship of a particular site

Local Community – lineal or cultural descendants and others for whom the site holds significance but who may not be members of the stewardship group

Professional Archaeologists – see SHPD website for current list of permitted archaeological firms

Technical Experts/Cultural Practitioners – those with knowledge and skills needed to accomplish the desired preservation goals

AT SHPD

GIS Specialist – to provide the location of historic properties in the area

Librarian/Archivist – to give context by gathering reports (by TMK) on historic properties in the area

History and Culture Branch (Ethnographer) - to provide guidance on best practices to engage with the community and document their input as community consultation is being planned, to review interpretive materials

Archaeology Branch – leads review of the Preservation Plan document

Architecture Branch – may get involved if architectural historic properties occur in proximity to the archaeological ones that are the focus of the Preservation Plan



Home » About » Branches » Archaeology

ARCHAEOLOGY



ARCHAEOLOGY

The Archaeology Branch of the State Historic Preservation Division includes a Branch Chief and staff members with expertise in archaeology and its subsets. The Archaeology Branch manages a number of aspects including Review and Compliance, Survey & Inventory, certain types of mitigative actions, and maintains a list of permitted archaeological

firms.

Listing of Permitted Archaeological Firms

The Archaeology Branch maintains a listing of State of Hawaii permitted archaeological firms annually. Permitted firms may be contracted to provide archaeological services for private individuals and public agencies. Firms are responsible for submitting updated permits with the accompanying fee for each calendar year. The Archaeology Branch reviews each permit to ensure individuals and companies seeking permits meet the minimum standards for professional qualifications outlined in Hawaii Administrative Rules (HAR) 13-281.

[Click here to see a list of permitted archaeological firms for the Calendar Year of 2024](#)



Review & Compliance

The branch reviews federal, state and local projects with potential impacts to historic

CONTACT

State Historic Preservation Division

Kakuhihewa Building
601 Kamokila Blvd., Suite 555
Kapolei, HI 96707
Ph: (808) 692-8015
Fax: (808) 692-8020

Hotlines

DLNR Enforcement: (808) 643-DLNR
Burials: (808) 692-8015

QUICK LINKS ...

- [Forms](#)
- [Administrative Rules](#)
- [Intake & Determinations](#)



When to Plan?



EARLY!

As soon as the decision is made to embark on site stewardship, get in touch with **SHPD's GIS Specialist & Librarian/Archivist** to gather preliminary archaeological information on the site.

At the same time, contact **SHPD's Ethnographer** to get advice for planning and documenting community consultation. See SHPD website for contact details (<https://dlnr.hawaii.gov/shpd/contact/>).



How to Plan?

The Planning Process



- ❖ **Engage the local community and stakeholders** – both as part of identifying site features and significance, and to get input in developing preservation goals and the material form preservation should take for the historic property (*conservation* through avoidance and protection, *stabilization*, *rehabilitation*, *restoration*, *reconstruction*, *interpretation*, or *appropriate cultural use*).
- ❖ **Engage a qualified archaeologist** – to plan and conduct an **ARCHAEOLOGICAL INVENTORY SURVEY (AIS)**—in consultation with SHPD and to HAR §13-276 standards—that compiles background information on the site, records current conditions and archaeological potential as well as site boundaries, and assesses significance of the historic property. This report should incorporate community consultation.
- ❖ **Consult with technical experts/cultural practitioners** – seek guidance from those skilled in techniques **and the cultural knowledge** needed to accomplish preservation goals for the historic property
- ❖ **Draft a PRESERVATION PLAN for SHPD review** – this is done by the archaeologist but guided by project proponents, ongoing community/cultural practitioner consultation, current site conditions, and standards set out in HAR §13-277—with the goal of fulfilling the short- and long-term preservation goals of site stewards while meeting the statutory requirements of SHPD to take into consideration above- and below-ground aspects of the historic property.



Planning Outcomes

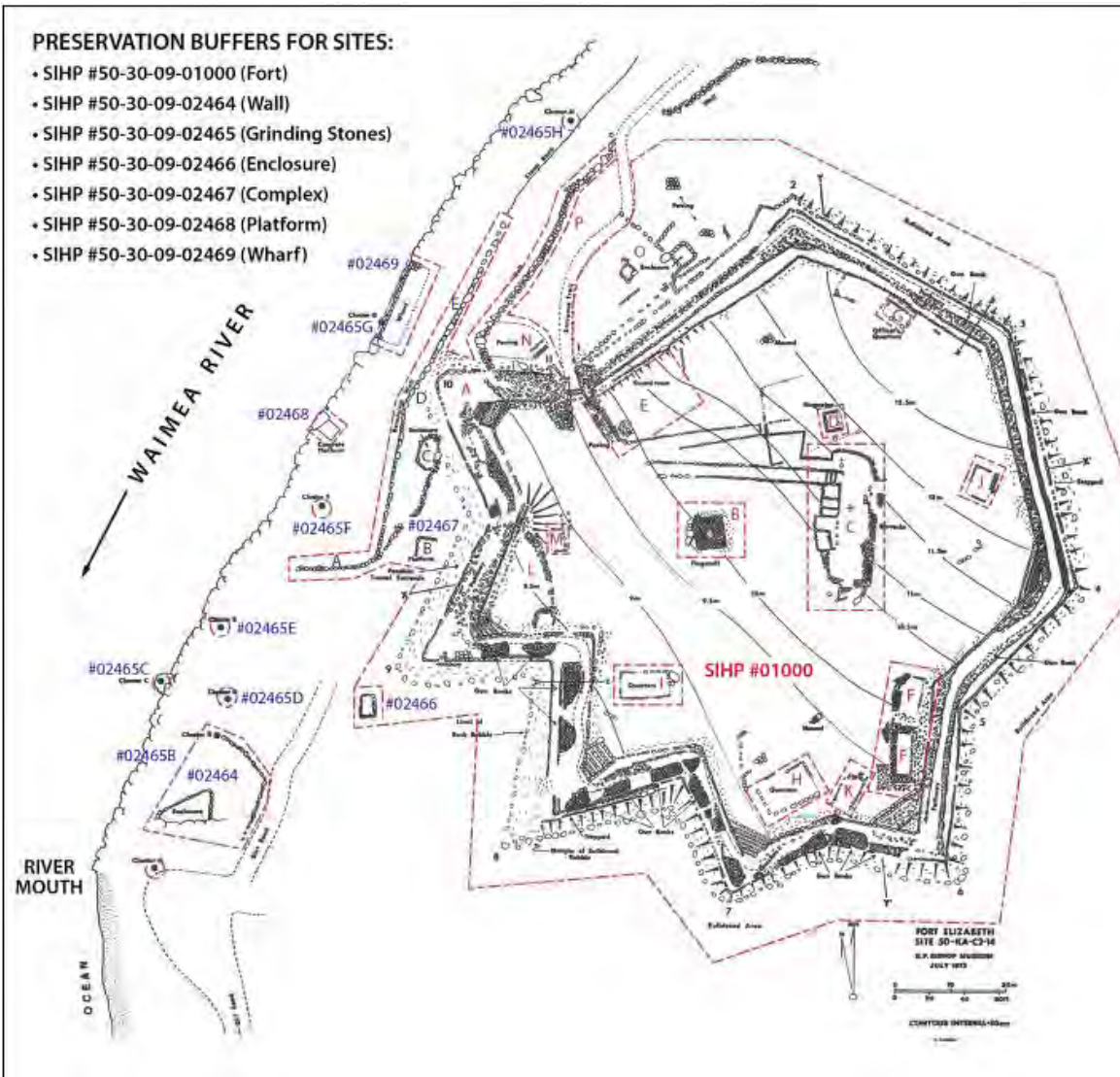
The Preservation Plan : I



A -- PRACTICAL -- LIVING & ADAPTABLE -- THOUGHTFUL -- document that includes, but is not limited to:

1. **An overview of the proposed stewardship project** – detailing the material form preservation will take (*conservation, stabilization, rehabilitation, reconstruction, interpretation, appropriate cultural use*) and impacts this may have, while introducing the groups involved, their funding sources, parties consulted, and intentions for future site use.
2. **An account of the consultation process** – covering how consultation was conducted, a list of individuals/organizations reached out to, and summaries of their input. The contents of the entire plan should reflect meaningful consideration of this input.
3. **Identification of the nature and extent of the site, documentation of its current condition** – drawn from the AIS.
4. **Designation of buffer zones** – drawn around above-ground features and the below-ground extent of the site onto plan maps and construction drawings, as well as being physically marked on-site, to delimit where certain activities can or can't occur or certain precautions need to be taken to preserve the historic property's integrity and context.
5. **Short-term (interim) protection measures** – implementing buffer zones if/when construction is planned on or near a historic property, done by means of – flagging -- erecting barriers -- placing avoidance instructions on construction plans -- pre-construction briefings -- archaeological monitoring under an **ARCHAEOLOGICAL MONITORING PLAN (AMP)** that results in an **ARCHAEOLOGICAL MONITORING REPORT (AMR)**, each accepted by SHPD as meeting standards set in HAR §13-279.

[Continued]



Taken from - Revised Draft #2 - Preservation Plan: Park Management and Development, Pā'ūla'ūla/Fort Elizabeth State Historical Park, Makaweli Ahupua'a, Waimea District, Island of Kaua'i, TMK: (4) 1-5-005:003 (Yent 2024:176).



Planning Outcomes

The Preservation Plan : II



[Continued]

6. **Long-term preservation measures** – intended for overall site stewardship following the *Secretary of the Interior's Standards for the Treatment of Historic Properties*. Each topic may become its own **PLANNING DOCUMENT** that is appended to the overall Preservation Plan.

Provide as much detail as possible on -- *who* will conduct the work (what groups) -- what *methods* and *tools* will be used to accomplish tasks -- a *timetable* for the work that at least estimates how often it will be carried out -- a system for *documenting and reporting* on the outcome of work -- for the following topics:

- a) **Site Maintenance Measures** – regular repairs
- b) **Vegetation Clearance Measures** – cut, don't pull
- c) **Litter Control Measures** – regular site clean-ups
- d) **Site Access** – whether to promote or restrict
- e) **Appropriate Site Interpretation** – content and means/media of communication
- f) **Permanent Markers/Signage** – to encourage or discourage activities on-site
- g) **Future Impact & Site Stability** - dealing with natural & human factors that threaten the site
- h) **Monitoring Site Integrity** – regularly scheduled archaeological inspections to record changes in site condition for inclusion in a **LETTER REPORT** to SHPD
- i) **Future Archaeological Investigations** – designed to expand knowledge and improve interpretation of the site, guided by a SHPD-accepted **DATA RECOVERY PLAN (DRP)** and documented in a **DATA RECOVERY REPORT (DRR)** that is reviewed and accepted by SHPD, each to standards set out in HAR §13-278

**FINAL Preservation Plan and End of Fieldwork Report
for Site Complex at Kamānele Park, SIHP #50-80-14-08768,
Waikīkī Ahupua‘a, Kona (Honolulu) District,
Island of O‘ahu, TMK: [1] 2-9-003:006**



Prepared for
City & County of Honolulu,
Mālama Mānoa, and
The Mānoa Branch of The Outdoor Circle

Prepared by
Rosanna Thurman, M.A.,
Radha Martin, B.A.,
and Catharine Therford, B.A.

Oceanic Archaeological Science and Educational Services (OASES)
Honolulu, Hawai‘i

July 2023

**Pacific
Legacy**

Historic
Preservation

**FINAL
PRESERVATION PLAN FOR
KŪPOPOLO HEIAU
(SIHP 50-80-01-00241),
KAPAELOA AHUPUA‘A, WAIALUA, O‘AHU
[TMK: (1) 6-1-005:016 (por.)]**



CULTURAL
RESOURCES
CONSULTANTS

Hawai‘i Office:
Kalihi, O‘ahu

California Offices:
Bay Area
Sierra/Central Valley

Pacific Legacy: Exploring the past, informing the present, enriching the future.



Hā'ena State Park Master Plan Case Study

HISTORIC HAWAI'I FOUNDATION PRESERVATION PLANNING WEBINAR

ALAN CARPENTER, DLNR DIVISION OF STATE PARKS

KIMI YUEN, PBR HAWAII

JULY 30, 2024



Inspiration from Chipper Wichman...

**Hana a lau, a lau ke aho,
a laila loa'a ka i'a kāpapa o ka moana.**

Make four hundred times, four hundred fish lines

Before planning to go after the fighting fish of the sea.

*(Be well-prepared for a big project. Envision success, inspire others to see the goal,
support the preparation of skills and resources.)*

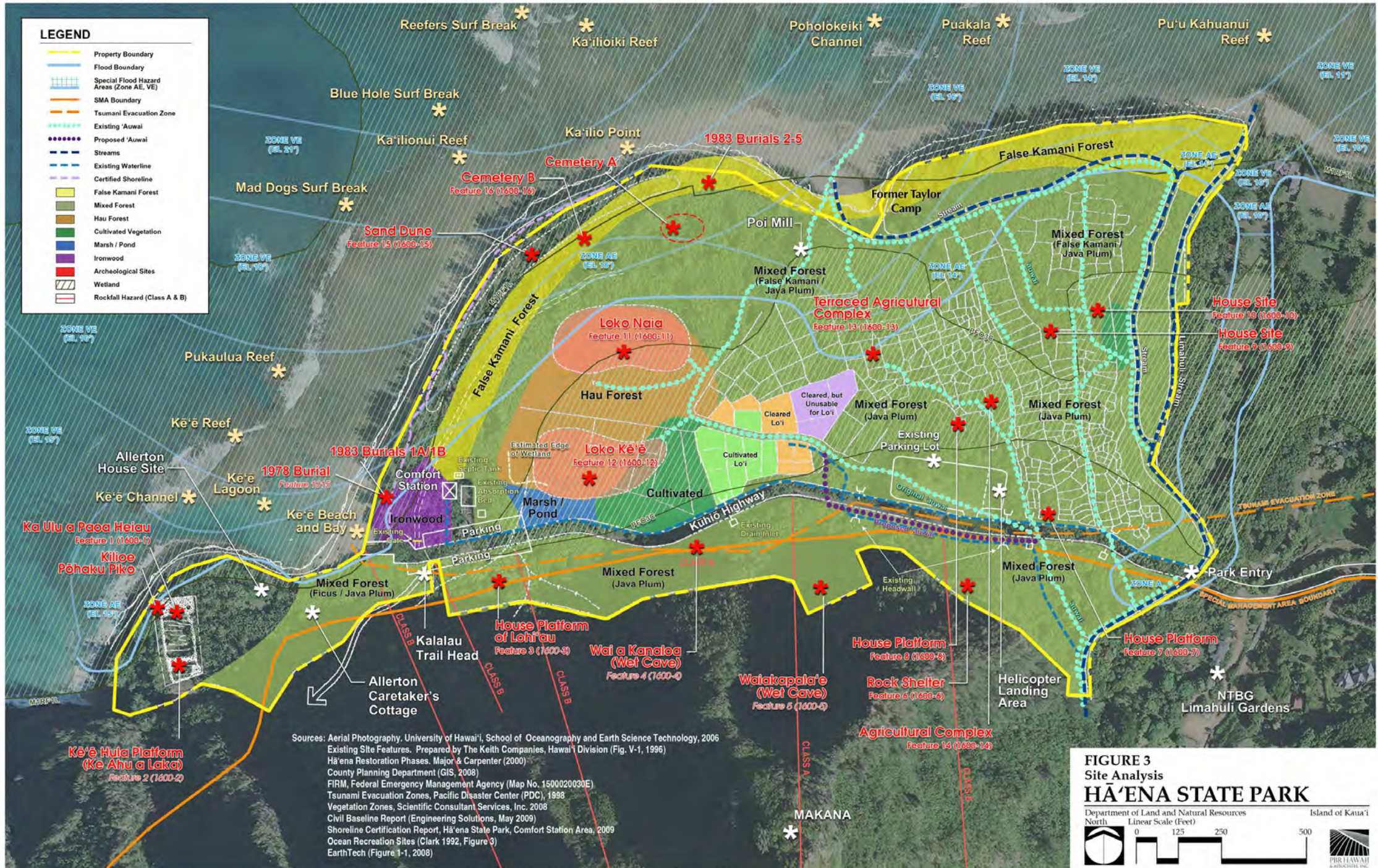


FIGURE 3
 Site Analysis
HĀ'ENA STATE PARK
 Department of Land and Natural Resources
 North
 Linear Scale (Feet)
 0 125 250 500
 Island of Kaua'i
 PER HAWAII
 ARCHITECTURE, INC.

Places on the National and Hawai'i Registers of Historic Places

- Hā'ena Archaeological Complex - listed on the Hawai'i and National Registers of Historic Places in 1984 (State site #30-02-1600)
- Kaula'i Belt Road (North Shore Section) - listed on the National Register of Historic Places in 2004 (Site #30-02-9396). Nomination amended with additional information in 2021.
- Nāpali Coast Archaeological District (Site #30-02-3200) overlaps the park in areas mauka of the highway and was listed on both National and State Registers in 1984 at the same time as the Hā'ena Archaeological Complex



The Five Main Goals...

Developed by the 31-member community advisory committee together with State Parks for the master plan:

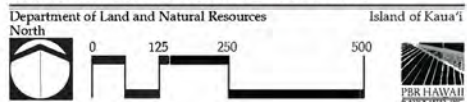
- Recognize that the entire park is culturally significant.
- Restore Hā'ena State Park as a living place... cleanse, restore and revive cultural practices again.
- Involve the original families and reconnect the local community to the place.
- Uphold State Parks' responsibility for the public's safety, access, and welfare.
- Balance the provision of recreational opportunities with the preservation of the significant natural and cultural resources.

LEGEND

- A** Welcome Hale
- B** Bicycle Racks
- C** Restrooms
- D** Rehabilitate Allerton's Cottage for Hula/Park Use
- E** Gate
- F** Hula Complex
- G** Pedestrian Path to Kē'e
- H** Relocated Lifeguard Tower
- I** Restored 'Auwai
- J** Rehabilitate Montgomery House for Lo'i / Park Use
- K** Picnic Areas w/ Tables
- L** Parking Area
- M** Alternate Helicopter Landing Zones
- N** Restore Agricultural Complex
- O** Turnaround & Shuttle Stop
- P** Hālau Wa'a
- Q** Cultural Gathering Area & Traditional Hale
- R** Rockfall Mitigation Measures
- S** Staging Areas
- T** Reconstructed Hale and Lo'i Interpretive Site
- ▲ Rockfall Hazard Warning Signs
- * Interpretive Displays
- Ocean Safety Signage
- Estimated Makai Boundary for Simulated Rockfall Hazard (AECOM 2013)



FIGURE 27
Master Plan
HĀ'ENA STATE PARK



Source: Based on 2001 Community Preferred Master Plan Prepared by The Keith Companies





LO'1 2008



LO'I 2016



LO'1 2020



YOSEMITE BOARDWALK

LO'I
RESTORATION
CONTINUES...





ALLERTON CARETAKER'S COTTAGE BEFORE



ALLERTON CARETAKER'S COTTAGE AFTER



MONTGOMERY HOUSE BEFORE



MONTGOMERY HOUSE AFTER



HOUSE BENEATH THE HOUSE

AUNTY ETTA PHILLIPS IN 2010

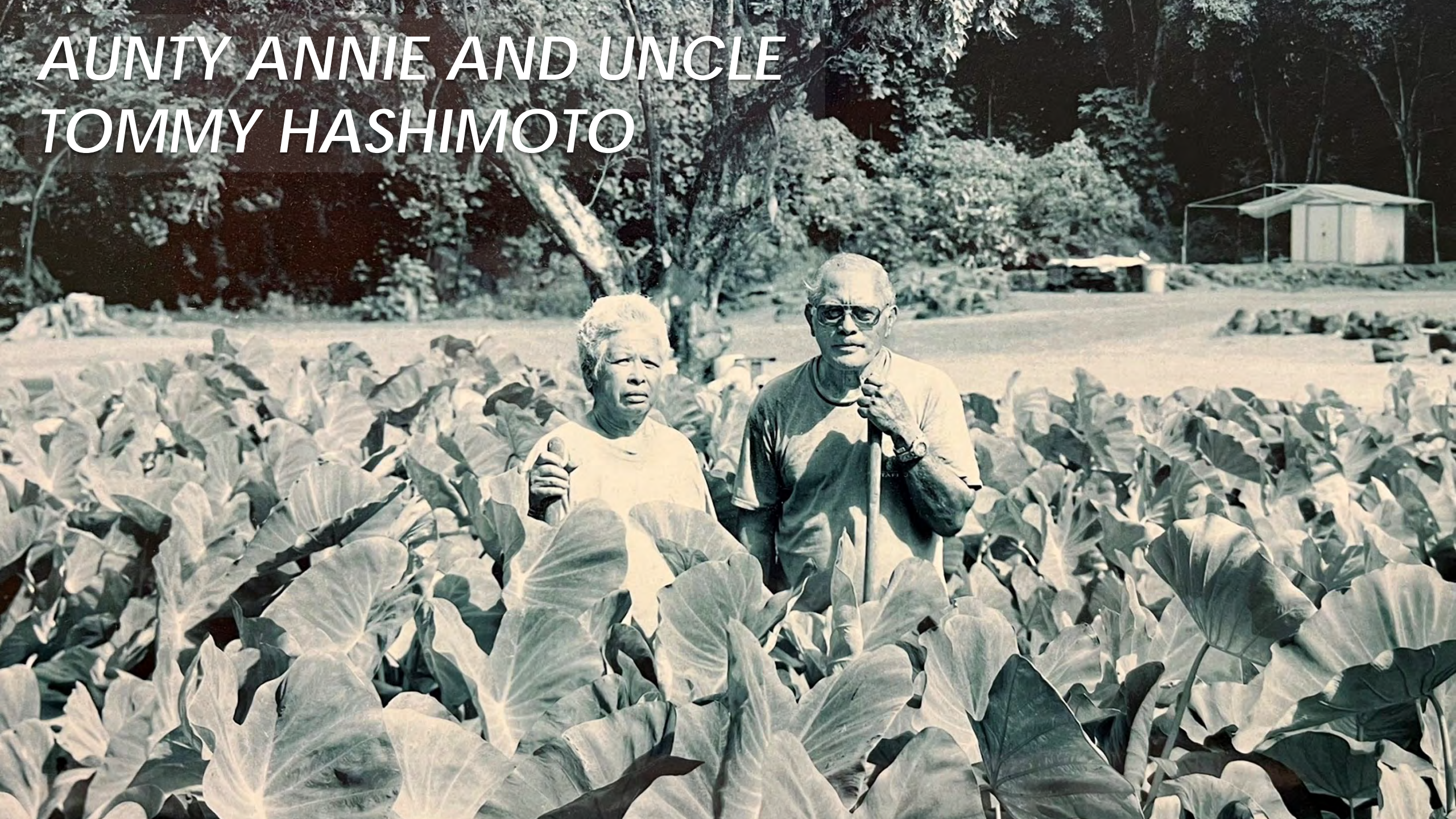
*...WITH MAKANA
LOOKING OVER HER
AT MONTGOMERY
HOUSE WHERE SHE
WAS BORN...*



AND AGAIN IN 2021...



*AUNTY ANNIE AND UNCLE
TOMMY HASHIMOTO*



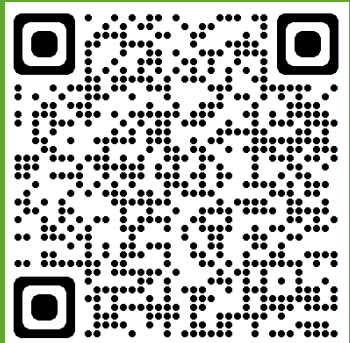
THE NEXT GENERATIONS...



HĀ'ENA STATE PARK CASE STUDY

Available at the DLNR's
website:

<https://dlnr.hawaii.gov/wp-content/uploads/2023/06/Haena-State-Park-Case-Study.pdf>

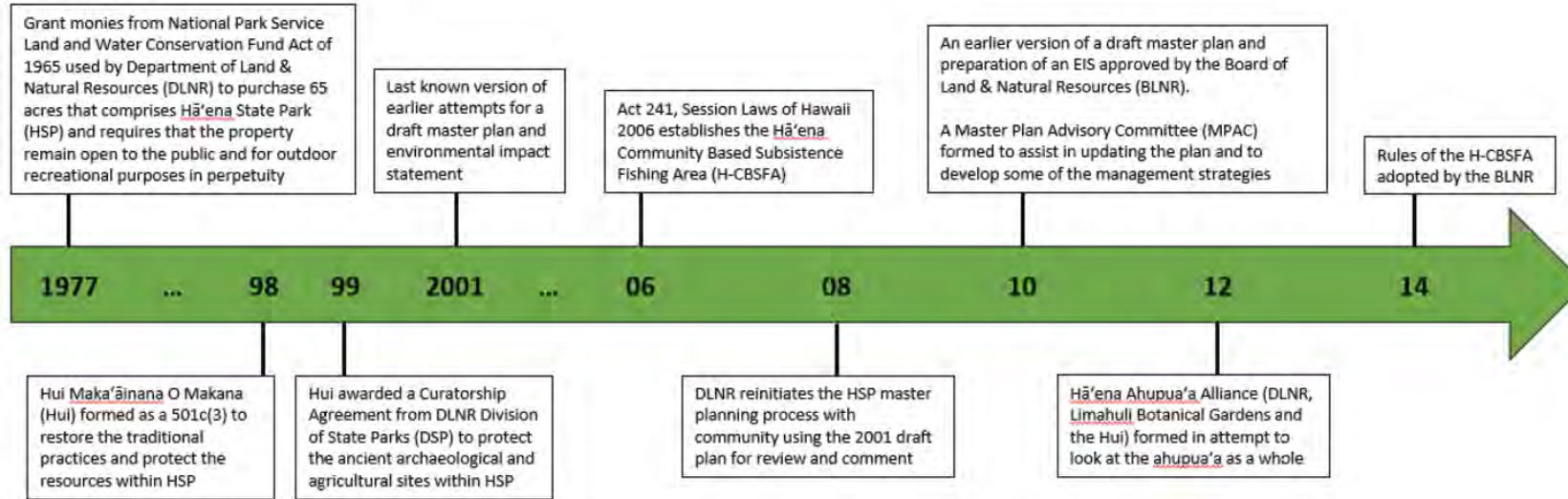


The Transformation of Hā'ena State Park

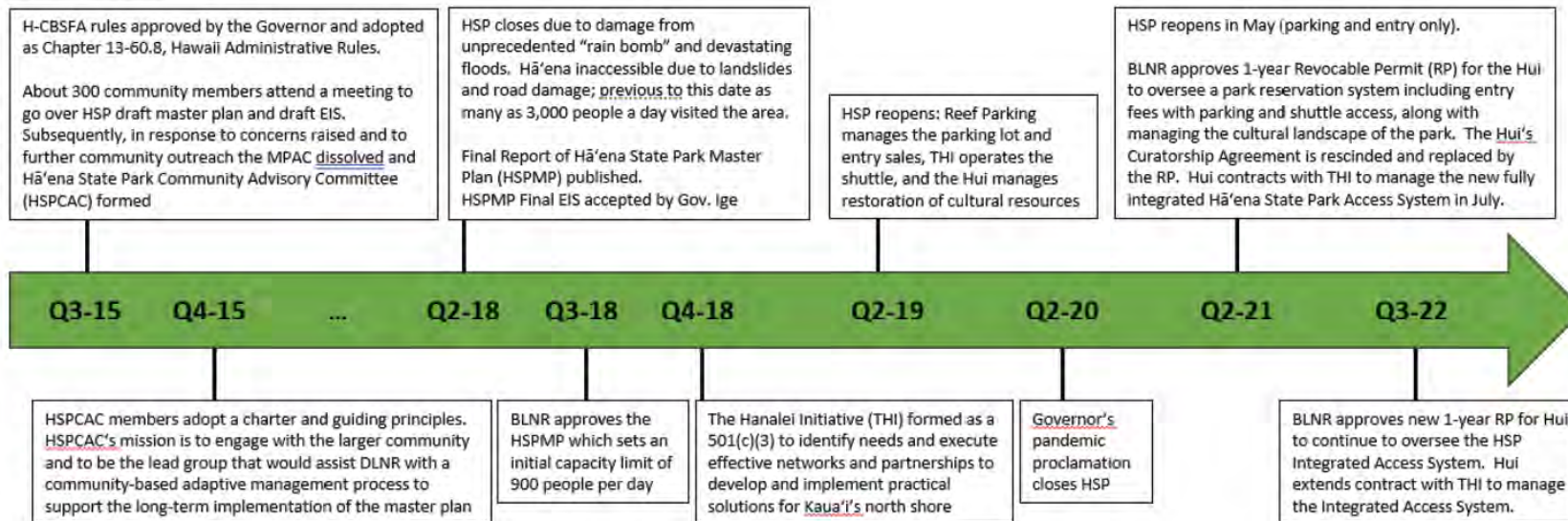
A case study on how to manage a visitor hotspot



1977 – 2014



2015 - 2022



HĀ'ENA STATE PARK TIMELINE!

(Source: The Hanalei Initiative, Appendix A)

CONTACT:

Michael Miller

Bureau Historical Architect
WASO | Cultural Resources, Partnerships,
and Science Directorate
U.S. National Park Service
michael_w_miller@nps.gov
Work mobile: (202) 617-0830
<https://www.nps.gov/orgs/1345/index.htm>

Megan Alvarez

O'ahu Lead Archaeologist
megan.alvarez@hawaii.gov
Hawai'i State Historic Preservation Division
Phone: 808-798-0526
<https://dlnr.hawaii.gov/shpd/about/branches/archaeology/>

Alan Carpenter

Assistant Administrator
Hawai'i State Parks Division
Dept. of Land and Natural Resources
Alan.B.Carpenter@hawaii.gov
Office: 808-587-0286
<https://dlnr.hawaii.gov/dsp/>

Kimi Mikami Yuen

Vice President
PBR HAWAII
kyuen@pbrhawaii.com
Office: 808-521-5631
<https://pbrhawaii.com/>

Kiersten Faulkner

Executive Director
Kiersten@historichawaii.org
Historic Hawai'i Foundation
680 Iwilei Rd. Ste. 690
Honolulu, HI 96817
Office: 808-523-2900
www.historichawaii.org

Andrea Nandoskar

Education Program Manager
Historic Hawai'i Foundation
andrea@historichawaii.org
Office: 808-523-2900
www.historichawaii.org

GENERAL RESOURCES

Further Reading and Reference Materials

- Preservation Planning Standards
https://www.nps.gov/articles/sec_stds_planning_standards.htm
- Preservation Planning Guidelines
https://www.nps.gov/articles/sec_stds_planning_glines.htm
- Preservation Brief 43: The Preparation and Use of Historic Structure Report
<https://www.nps.gov/orgs/1739/upload/preservation-brief-43-historic-structure-reports.pdf>
- Hawai'i Administrative Rules 13-277 "Rules Governing Requirements for Archaeological Site Preservation and Development"
<https://files.hawaii.gov/dlnr/shpd/rules/277.pdf>
- Report Collection Spotlight: Historic Structure Reports
<https://www.nps.gov/articles/000/phscl-collection-spotlight-historic-structure-reports.htm>
- What is a Historic Structures Report and When Do You Need One?
<https://historichawaii.org/2023/01/06/historicstructuresreport/>

Audience Questions

MAHALO FOR
SUPPORTING THE
PROGRAMS AND
ACTIVITIES OF
HISTORIC HAWAI‘I
FOUNDATION

E-NEWSLETTER SIGN-UP

<https://historichawaii.org/newsletter-signup/>

JOIN

<https://historichawaii.org/join-us/>

GIVE

<https://www.paypal.com/paypalme/historichi>

CONTACT

Member@historichawaii.org

808-523-2900
