

Preservation Funding for Community, Public & Nonprofit Stewards

WEDNESDAY, DECEMBER 8, 2021

A solid red horizontal bar at the bottom of the slide.

Breakout Room 1: National Park Service

Megan J. Brown

State, Tribal, Local, Plans & Grants
Division Chief

Washington, DC

Dr. Elaine Jackson-Retondo

Preservation Partnerships & History Program
Manager, Interior Regions 8, 9, 10, & 12

San Francisco, CA



Program Purpose

Historic Preservation Fund grants support historic properties and place-based identity, key components to the social and economic vitality of our communities.

The State, Tribal, Local, Plans & Grants Division provides preservation assistance through several grant programs that support the preservation of America's historic places and diverse history.



Iolani Palace, Honolulu, O'ahu was awarded \$500,000 through the Save America's Treasures Program in 2021. Photo by Historic Hawai'i Foundation.

NPS Grants

Assist governments and organizations to record, document, repair, and protect properties, landscapes, traditional cultural practices, and archeological sites.

- Certified Local Governments
- Save America's Treasures
- Paul Bruhn Historic Revitalization
- History of Equal Rights
- Underrepresented Communities
- Tribal Heritage
- Japanese American Confinement Sites
- Maritime Preservation Grants
- Native American Graves Protection & Repatriation Act
- American Battlefield Protection Program



Japanese American Citizens League of Hawai'i, Honolulu Chapter was awarded \$150,000 in 2021 to develop a video documentary about the forced removal of Hawai'i AHAs during WWII. Photo: Gate at Sand Island Internment Camp c. 1942. Courtesy U.S. Army Museum of Hawai'i.



Japanese American Confinement Sites

Manzanar Relocation Center,
Inyo County, California. Photo
courtesy: Manzanar
NHS/Katsumi Taniguchi

Competitive grant program established for the preservation and interpretation of U.S. confinement sites where Japanese Americans were detained during World War II

- Up to \$38 million has been authorized for the entire life of the grant program
- Roughly \$3 million has been awarded each year since 2009
- Applications typically due annually in November
- 2:1 Federal to non-Federal match required

nps.gov/jacs

Maritime Preservation Grants

- Preservation and Education Grants
- Source of funding is scrapping of ships
- Approximately \$1.3 million available in winter 2022
- Eligible applicants are States - interested grantees should partner with SHPO

Native American Graves Protection and Repatriation Act (NAGPRA) Grants



- Available to Native Hawaiian organizations and museums to assist in consultation, documentation, and repatriation
- \$1.9 million awarded annually; applications due in March
- Up to \$100,000 for consultation or documentation projects
- Up to \$15,000 for repatriation projects
- No match required

2015 repatriation Honolulu Museum of Art to Tlingit tribe of Alaska

nps.gov/nagpra

American Battlefield Protection Program: Preservation Planning Grants

- Funds stewardship activities: research, inventory & evaluation, planning, partnerships & visitor experience projects
- Battlefields and sites of conflict from any period in American history
- No match required
- Available funding \$1.198 million each year
- To date 6 projects worth a combined \$384,600 have been awarded in Hawaii
- FY2022 announcement on grants.gov in December
- Eligible Applicants:
 - Tribal, State, and local governments
 - Nonprofits including institutions of higher education



Nu'uuanu Pali - site of the 1795 Battle of Nu'uuanu and a PPG funded project in 2017

<https://go.nps.gov/PPG>

National Park Service Historic Preservation Fund



Historic Preservation Fund (HPF)

Non-competitive grant programs

- Think annual BLOCK grant!
- HPF Grants to fund State Historic Preservation Offices
 - Annual grants awarded to 50 states, the District of Columbia, and 8 Territories
 - 10% of funding directed to Certified Local Governments (\$5million)
- HPF Grants to fund Tribal Historic Preservation Offices
 - Annual grants awarded to over 207 Tribes

Hawaii Certified Local Governments

The screenshot shows the National Park Service website. At the top left is the NPS logo and the text "National Park Service". To the right is a search bar. Below this is a green navigation bar with links: "Find a Park", "Discover History", "Explore Nature", "Get Involved", "Working with Communities", "Teachers", "Kids", and "About Us". A large banner image shows a park scene with trees and a building. Overlaid on the banner is the text "Certified Local Governments" and "Cultural Resources National Park Service".

On the left side of the page is a sidebar menu with the following items:

- State, Tribal, Local, Plans & Grants
- State Preservation Program
- Tribal Preservation Programs
- Local Preservation
- Preservation Planning
- HPF Grants
- ASAP Information
- Contact Us

Below the sidebar is a "Follow us on:" section with a Facebook icon.

The main content area is titled "Certified Local Government Contacts & Statistics". It contains a sub-section "State Coordinator Contact Information" with a link "Click For CLG Contact and Statistics:". Below this is a table listing certified local governments in Hawaii and their certification dates.

<u>Click For CLG Contact and Statistics:</u>	<u>Certification Date</u>
Hawaii County, Hawaii	28-Aug-14
Kauai County, Hawaii	04-Mar-87
Maui County, Hawaii	23-Oct-91

Below the table is a "Back" button.

CLG Projects and Success Stories



<http://www.flickr.com/photos/40780016@N02/3915512588/>



CAMP

commission assistance & mentoring program[®]

News from the National Alliance of Preservation Commissions
Nov-Dec 2012

the Alliance review

CAN IT BE SAVED?

Emergency Measures for Threatened Buildings

4 | The David and Gladys Wright House 8 | Lost Urgency: The Luzon Building 14 | When Historic Properties are Threatened

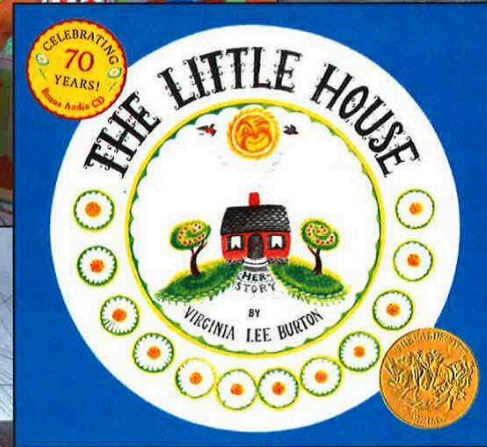
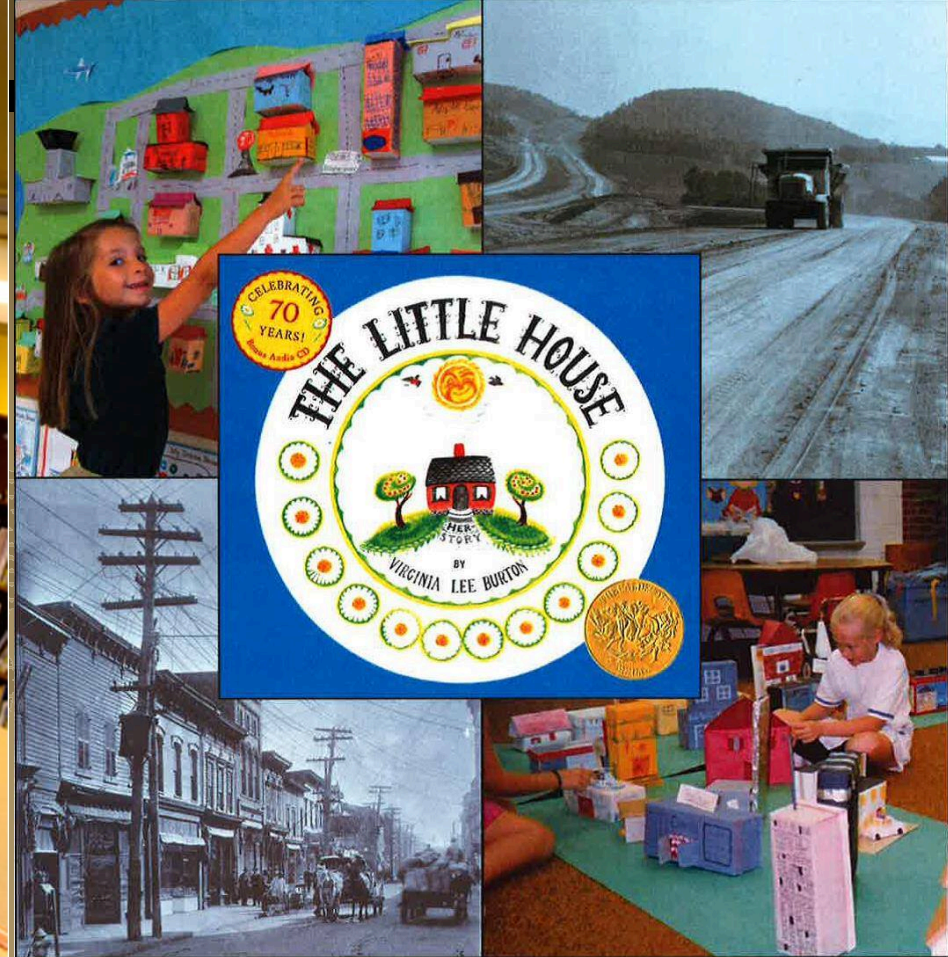
19 | Staff Profile 23 | State News 25 | Heads Up 27 | Upcoming CAMPs





Albany, GA Art Contest

- Students choose a site more than 50 years old and to do an art project around it
- Resulted in a lego version of the Chamber of Commerce, the oldest building in town!

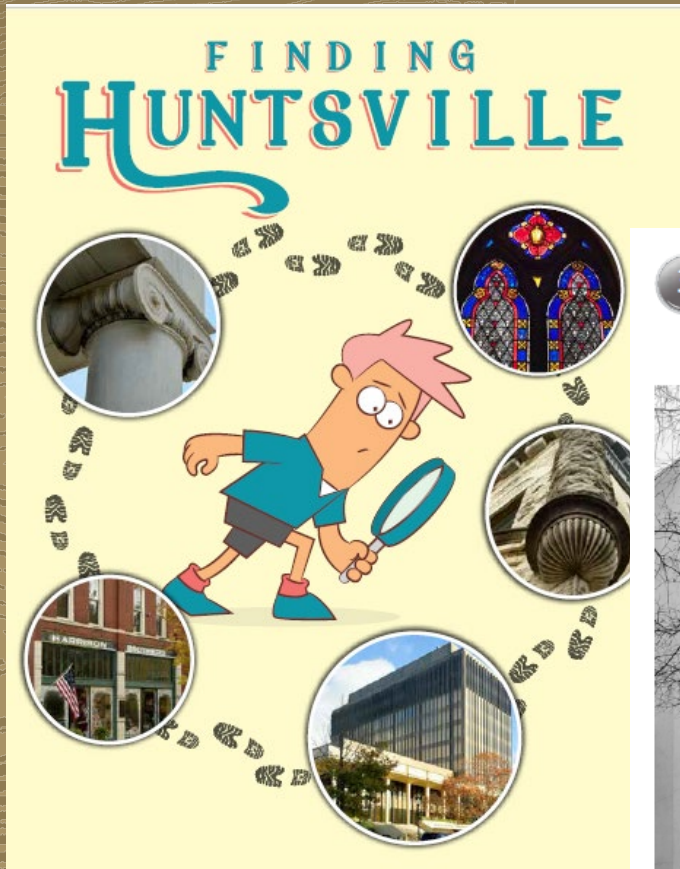


The Little House Community Workbook

- Why communities change over time for 2nd grade through a story, illustrations and lesson plans
- Partnership with VA SHPO

Finding Huntsville Activity Book

Huntsville, AL



I. Schiffman Building

Date: circa 1845, major remodel in 1895 231 East Side Square
Architect: Unknown, remodel by George W. Thompson


Romanesque Revival Style

This style was popular from the 1870s until 1900. Only a few examples of Romanesque Revival are still standing in Alabama. Romanesque Revival copied pieces of buildings from France, Italy, and Spain, built in the 11th and 12th centuries. Those original buildings are now a thousand years old!

CAN YOU DRAW A LINE TO THESE FEATURES?

- 1 Rough (rusticated) stone
- 2 Carvings with leaves or flowers
- 3 Bow windows (These project from the building with a curved shape.)
- 4 Recessed front entry, usually under an arch

What makes this building impressive?




W	R	O	Y	L	K	B	R	Z	L	Y	
2	V	O	J	T	R	A	N	S	O	M	
3	D	I	M	E	N	T	D	N	C	J	
4	X	J	R	L	A	N	C	E	T	O	T
5	H	X	S	I	N	E	H	E	L	V	
6	R	X	Q	Z	O	E	S	M	U	S	
7	R	E	F	O	I	L	N	S	X	M	B
8	R	B	E	L	X	B	I	Q	N	A	
9	G	O	T	H	I	C	P	C	U	S	
0	U	T	T	R	E	S	S	E	N	E	
1	Q	U	A	T	R	E	F	O	I	L	
2	K	J	N	C	A	P	I	T	A	L	

1	M	N		
2	T	A	L	
3				
4	M	E	N	T

1	C	O	R	B	E	L					
2	T	R	A	N	S	O	M				
3	R	O	M	A	N	E	S	Q	U	E	
4	B	U	T	T	R	E	S	S	E	N	E
5	L	A	N	C	E	T					

1	G	O	T	H	I	C	P	C	U	S		
2	T	R	E	F	O	I	L	N	S	X	M	B
3	Q	U	A	T	R	E	F	O	I	L		
4	I	O	N	I	C							



A Free Guide from
Historic Huntsville Foundation
 124 South Side Square
 Huntsville, Alabama 25801
 256-508-5372 www.historichuntsville.org



Credits

Partially funded by the Historic Preservation Fund, National Park Service, Department of Interior. Any opinions, findings, and conclusions or recommendations expressed in this material do not necessarily reflect the views of the Department of the Interior.

Partially funded by the Community Foundation of Greater Huntsville on behalf of the Ruth and Lyle Taylor Fund.

Photographs by Patrick Hood

Brochure created by Caroline T. Swope, M.S.H.P., Ph.D., of Kingstree Studios, for the Historic Huntsville Foundation.

Designed and Printed by C&A Printing

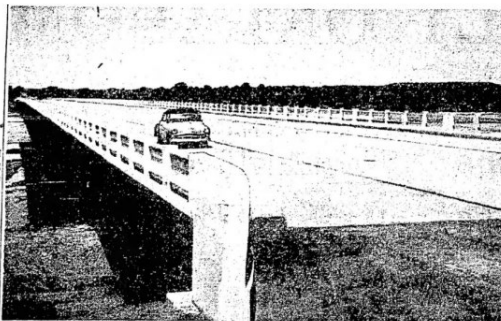
© Historic Huntsville Foundation 2019

Survey projects in Oklahoma



Thematic Survey of Route 66, Tulsa County, OK

Prepared by Cox | McLain Environmental



To be opened Friday in Tulsa is the Homer X. White memorial bridge, a key part of the U. S. 66 bypass over the Arkansas river at S 51.

Figure 13. The Homer X. White Memorial Bridge over the Arkansas River at 51st Street. From *The Daily Oklahoman*, 1953, 2.

Thematic Survey of Route 66, Tulsa County, OK

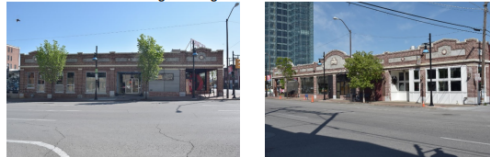
Prepared by Cox | McLain Environmental Consulting, Inc.

1137 South Harvard Avenue—Moody's Jewelry



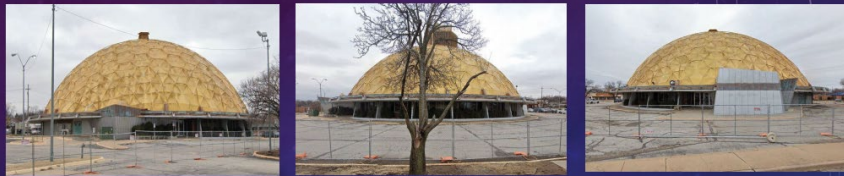
- Constructed in 1960.
- Property Type: General Commerce.
- Current and former use as a jewelry store. The resource includes a distinctive Google-style sign designed to grab motorist's attention.
- No previous NRHP eligibility recommendation on record.
- Recommended eligible as a good example of the General Commerce property type of Route 66 resources under Criterion A as it retains integrity of location, association, feeling, and setting.
- Recommended eligible under Criterion C for Architecture for its design, particularly the intact historic signage.

309-313 East 2nd Street—Vaughn's Drugstore



- Constructed in 1929.
- Property Type: General Commerce.
- Building now operates as multiple restaurants.
- No previous individual NRHP eligibility recommendation on record. The building is a contributing resource to the Blue Dome Historic District.
- Potentially eligible for Black Heritage and Commerce under Criterion A as it retains integrity of location, feeling, and setting.
- Further investigation is necessary to determine whether Vaughn's Drugstore, listed in the National Register of Historic Places, was in this location.

was in this location.
born
301 East 2nd



• Left Perspective Straight Elevation Right Perspective

- Route 66 Alignment: Northwest 23rd St Original Route
- Building Type: Bank Address: 1112 NW 23rd St
- Name(s) of Business(s): The Gold Dome
- Façade Orientation: West Oklahoma City, Oklahoma County, OK

MID-CENTURY MODERN SURVEY OF NORTHWEST ENID

PROPERTY TYPES

The Modern Movement encompasses a large variety of architectural designs used in the 20th century. With its roots beginning in the 1920s, modernistic architecture was designed to form a break from historical revival styles and use new innovations and man-made materials. Modernism was to illustrate the progress, energy, and a new future.

After World War II, commercial buildings were constructed larger, devoid of ornamentation, sleeker, and with facades of glass. Walls became great expanses of aluminum-framed windows. The structural systems encased in concrete, brick, or stone were shown on the exterior rather than covered with a veneer. To accommodate the increased usage of the automobile, buildings were not required to be taller for walkability. Modern buildings became shorter and wider with accompanying parking lots for drivers and their automobiles.

After World War II, residential buildings were constructed in the Minimal Traditional style then into the early version of ranch styles. These houses began around the same size of their pre-war counterparts. Due to the influx of soldiers returning home, the construction industry boomed to accommodate the increase of housing needed. Throughout the 1950s, 1960s, and 1970s, the preferred house was the ranch house and stylized ranch house.

Minimal Traditional

The Minimal Traditional style house was the popular architectural style during the Great Depression since it was capable of being built with FHA-insured loans. Additionally, the traditional houses, due to their simple design, could be built quickly and were often used by World War II production-workers during the war and for returning service members who had abandoned any other traditional house abandoned any



Figure 3: Organic; 215 S. Cleveland St.



Figure 4: New Formalism; 409 Frances St.



MID-CENTURY MODERN SURVEY OF NORTHWEST ENID

Colorado Disaster Surveys



Fourmile Canyon Fire, Colorado – 6,200 acres, 168 homes



Boulder County, Colorado now leader disaster planning

Iowa: Hale Bridge Air Lift



Jones County Historic Preservation Commission

- Partnership between CLG, SHPO, DOT, DNR
- Lifted in three sections by Chinook Helicopters and the Iowa National Guard
- Relocated to entry of Wapsipinicon State Park outside of Anamosa, Iowa
- Cost \$450,000
- Part of a trail system for the park & hosts annual *dinner on the bridge*



Fort Madison, Iowa

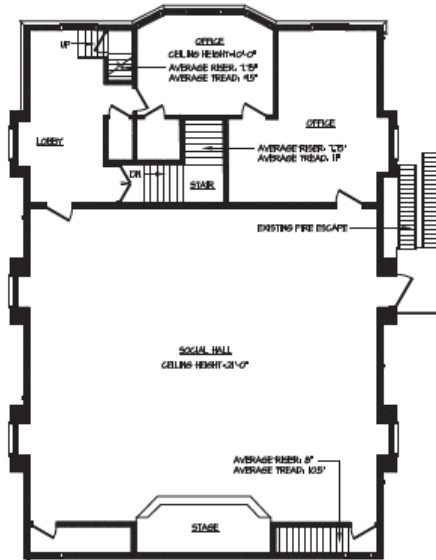
- 1986 Became a CLG
- 1989 Preservation Study (CLG)
- 1990 Survey of the City (CLG)
- 1991 Preservation Plan (CLG)
- 1998 Intensive Survey of Commercial District (CLG)
- 2006 Commercial District NR Nomination (CLG)
- 2006 Preserve America Community designation
- 2007 Santa Fe Passenger and Freight Complex Rehabilitation plan (Preserve America \$20,000)
- 2009 Rehabilitate (and raise) Complex to save from future flooding (\$3.2 million)
- Support to conserve artifacts damaged in flooding (IMLS)
- 2008 Survey of Old Town residential district (HRDP/SHPO)
- 2009 rejoined Main Street
- 2011 Intensive Survey of Old Town district (HRDP/SHPO)
- 2012 \$500,000 in CDBG/HUD funding for Main Street facade improvements
- Used small City funds and in-kind as match



National Park Service
U.S. Department of the Interior
State, Tribal, Local, Plans & Grants Division



Integrated Resource Management Applications



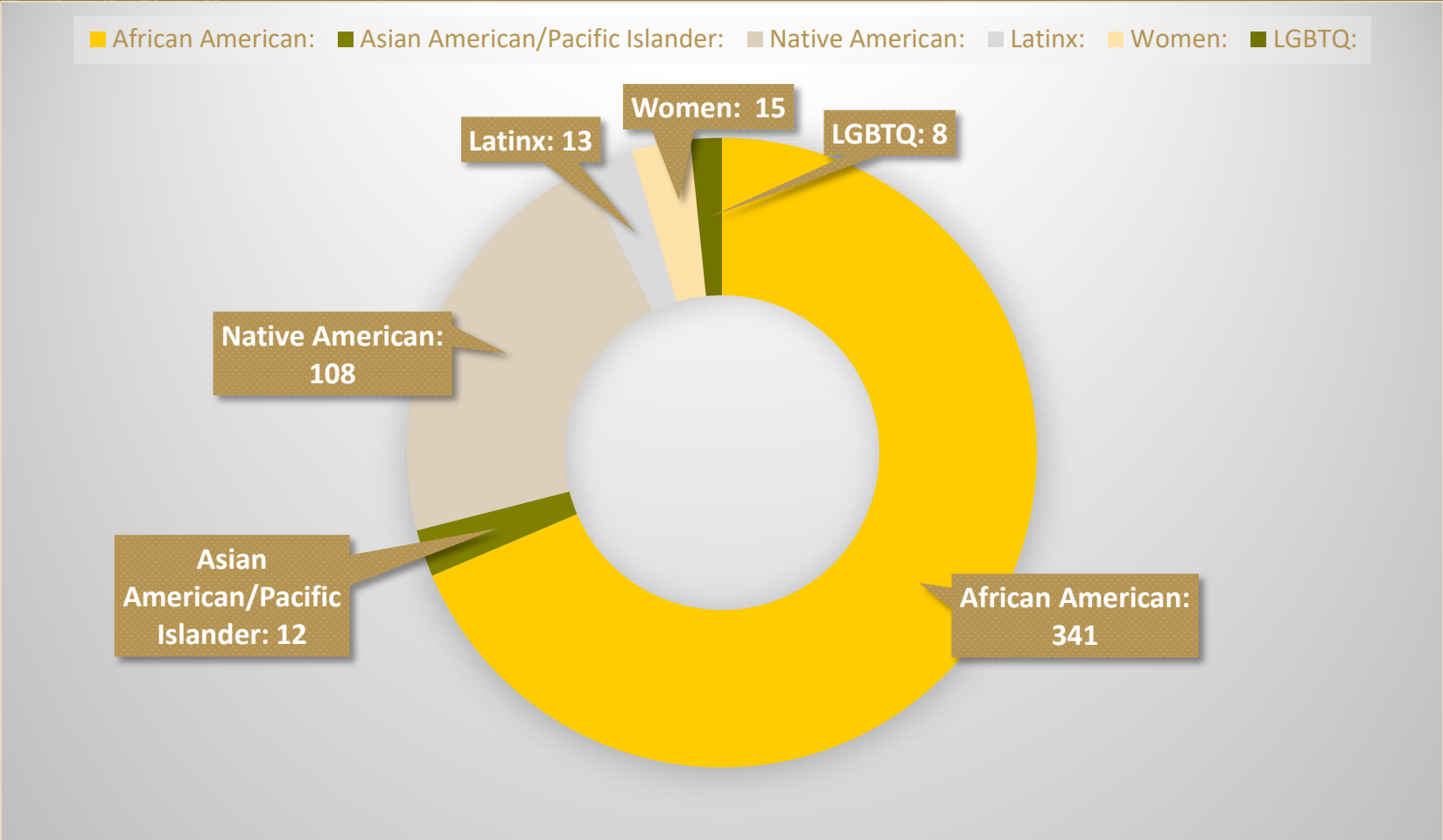
Existing Second Floor Plan



Left: Excerpt from Historic Structure Report for Odd Fellows Hall in East Providence, Rhode Island.
Right: Cover of Sioux Falls Downtown Design Standards from the South Dakota State Historical Society.

The National Park Service's Integrated Resource Management Applications (IRMA) Portal provides partners and the public with easy access to resource management documents.

Historic Preservation Fund since 2014



Historic Preservation Fund (HPF) Competitive Grant Programs



- African American Civil Rights (AACR)
- Historic Black Colleges and Universities
- History of Equal Rights (HER)
- Underrepresented Communities (URC)
- Save America's Treasures (SAT)
- Tribal Heritage Grants (THG)
- Paul Bruhn Historic Revitalization Grants
- Semi quinentennial

African American Civil Rights

- Grants to document, interpret, and preserve sites and stories related to the African American Civil Rights movement and sites of the transatlantic slave trade
- Projects types include **preservation**, and **history** projects (to include collections)
- Eligible applicants include States, Tribes, local governments, and non-profit organizations



16th Street Baptist Church, Birmingham

go.nps.gov/civilrightsgrant

African American Civil Rights

- Growing program
 - FY2016 \$8 million
 - FY2017 \$13 million
 - FY2018 \$13 million
 - FY2019 \$14.5 million
 - FY2020 \$15.5 million
 - FY2021 \$16.75 million
- No match required
- History – Minimum of \$25,000 and maximum \$500,000 Federal share
- Preservation – Minimum of \$75,000 and maximum \$500,000 Federal share
- Applications due late fall



Leona Tate eing escorted to school in New Orleans

go.nps.gov/civilrightsgrant

History of Equal Rights (HER)

- Grants to preserve sites related to all Americans struggle for equal rights
- No match required
- Preservation Projects
 - FY2020 \$2.5 million
 - FY2021 \$3.4 million
- Preservation projects range from \$75 - \$500,000
- Applications for pre-preservation work range from \$15 - \$50,000
- Applications due late fall
- Eligible applicants include States, Tribes, local governments, and non-profit organizations



Paulsdale, Alice Paul's Childhood Home

[go.nps.gov/civilrightsgrant](https://www.nps.gov/civilrightsgrant)

Underrepresented Communities (URC)



The Other Inn, Portland, Oregon

[go.nps.gov/urc](https://www.go.nps.gov/urc)

- Funds **surveys** of historic properties associated with underrepresented communities, as well as **nominations** to the National Register for specific sites
- \$25-50,000 awards
- No match required
 - FY2014 to 2019 \$500,000
 - FY2020 \$750,000
 - FY2021 \$1 million
- Grants range from \$15 – 50,000
- FY2021 Applications due January 11, 2022
- SHPOs, THPOs, CLGs may apply
- No match is required

Save America's Treasures

- Established as part of the millennium
- For the preservation and conservation of **nationally significant buildings and collections** in partnership with NEA, NEH, and IMLS
- From 1999 to 2010 over 3,600 applications requested \$1.45 billion
- \$300+ million to over 1,200 projects since 1999
- Projects funded in all 50 states, DC, and the territories



Rehabilitation of the 780-feet of the Kaloko Fishpond Wall,
Hawaii

go.nps.gov/sat

Save America's Treasures

- Eligible applicants include states, tribes, local governments, and non-profits.
- **1:1** nonfederal match required
- Since re-funded:
 - FY2017 \$5 million
 - FY2018 \$13 million
 - FY2019 \$13 million
 - FY2020 \$16 million
 - FY2021 \$25 million
- Collections – Minimum of \$25,000 and maximum \$500,000 Federal share
- Preservation – Minimum of \$125,000 and maximum \$500,000 Federal share
- Applications due December 14, 2021
- NPS manages building projects and IMLS manages collections projects



Rosa Park's Bus
Detroit, Michigan

Tribal Heritage

- Since 1990 more than \$17 million has been awarded to over 460 Indian, Alaskan Native, and Native Hawaiian communities
- Grants to assist in protecting and promoting unique cultural heritage and traditions.
- Projects include: oral histories, survey and inventory, education, interpretation, and preservation
- No match required
- Grants range up to \$50-60,000
- Applications for at least \$500,000 due winter 2022

go.nps.gov/tribalheritage



Hula Preservation Society discussing a series of photos of the Alama Hula Studio taken at the Nā Hula Festival, an annual community event on the island of O'ahu that was established by the City & County of Honolulu in 1940, canceled for the first time in 2020

Paul Bruhn Historic Revitalization Grants

- Physical **preservation** of NRHP listed and eligible sites that can encourage economic development
- Awarded as block grants to be subgranted
 - FY2018 \$5 million
 - FY2019 \$5 million
 - FY2020 \$7.5 million
 - FY2021 \$7.5 million



Vale, Oregon

[go.nps.gov/revitalization](https://www.nps.gov/revitalization)

Paul Bruhn Historic Revitalization Grants



Elkin, North Carolina

- Eligible Applicants: SHPOs, THPOs, Nonprofits, CLGs
- Grants range from \$200,000 - \$750,000
- No match required
- Funds must be spent in rural areas – fewer than 50,000 as defined by the Census
- Next Application winter 2022

go.nps.gov/revitalization

Semi quintennial Grants

- “Restore and **Preserve** State-owned sites and structures listed in the National Register of Historic Places that commemorate the founding of the nation.”
- Eligible applicants include states, tribes, local governments, and non-profits
- No match required
 - FY2021 \$10 million
- Due Spring 2022

go.nps.gov/stlpg



Old State House, site of the Boston Massacre

Thinking about applying?

1. Start Early, Start Early, Start Early!!
2. Register for ALL the systems EARLY! Sam.gov especially.
3. Is your project eligible? Logical next step?
4. Are you using the current application form? Oops!
5. $2+2=5$? Check math, proofread, review – don't be the only eyes!
6. Less is more but don't assume knowledge, tell the story.
7. Good photos but bad photos!
8. Deadlines – they're not just suggestions, they are real!
9. Not funded? Get your comments and try again.
10. Good grantees often get funded again, and again.....!

Youtube help: [HHPreservelt NPS](#)

Timelines, Funding & Reporting

Deadlines to Apply

When Grants are Announced

How Funds are Provided

Sharing Outcomes and Impact


- All Federal grants must be posted on Grants.gov for 60 days
 - Some may be posted longer, occasionally shorter
 - Some systems take up to 4 weeks to sign up for – SAM, DUNs, etc.
- STLPG plans 120 days minimum to move through the award selection process
 - Don't plan to start your project until 6 months past the deadline
 - Be aware that approvals may push that back
- HPF Funds are obligated through a grant agreement that is signed within GrantSolutions.
 - Funds are dispersed to grantees through ASAP (program of US Treasury)
 - Most grants are reimbursable, unless an advance is approved
- Most grants require interim reporting every 6 months
 - This includes a narrative and financial SF-425
 - Final reports are due 120 days past end date
 - CLG grants report to the SHPO

STLPG Bulletins – want to know more? Sign up at STLPG@nps.gov

State, Tribal, Local, Plans & Grants

National Park Service
U.S. Department of the Interior
Cultural Resources, Partnerships,
& Science Directorate
Washington, D.C.

September 2021



News & Announcements

United States Assay Office in Boise, Idaho. Photo courtesy of Idaho SHPO.

National Park Service and Partner Agencies Announce \$15.5 Million in Save America's Treasures Grants

The National Park Service (NPS) in partnership with the National Endowment for the Arts (NEA), the National Endowment for the Humanities (NEH), and the Institute for Museum and Library Services (IMLS) today announced \$15.5 million in Save America's Treasures grants, through the Historic Preservation Fund, to fund 49 projects in 29 states that will preserve nationally significant sites and collections.



Sign Up for Our Bulletin

Add your email for periodic updates about grant programs administered by the State, Tribal, Local, Plans & Grants Division (STLPG) of the National Park Service

* Email

Sign Up

By submitting this form, you are consenting to receive marketing emails from: State, Tribal, Local, Plans & Grants Division, 1849 C Street, NW 7360, Washington, DC 20240, US, <http://www.nps.gov/stlpg>

You can revoke your consent to receive emails at any time by using the [SafeUnsubscribe@](mailto:SafeUnsubscribe@nps.gov) link, found at the bottom of every email. [View Privacy Policy](#).
Emails are serviced by [Constant Contact](#)

Youtube help: [HHPreservelt NPS](#)

www.nps.gov/STLPG
202-354-2020 | STLPG@nps.gov

Resources

Program Information

Links

Tutorials

Other References and Information

Discussion
