

HISTORIC
HAWAII
FOUNDATION



48TH ANNUAL PRESERVATION HONOR AWARDS

THURSDAY, OCTOBER 20, 2022
THE HARRY & JEANETTE WEINBERG HO'OKUPU CENTER
HONOLULU, HAWAII



HISTORIC HAWAI'I FOUNDATION PRESERVATION HONOR AWARDS EXECUTIVE DIRECTOR'S MESSAGE



Aloha kākou:

Congratulations to all of the honorees for the 48th Annual Preservation Honor Awards from Historic Hawai'i Foundation. We are pleased to be able to gather in person once again after two years of virtual programs.

The Preservation Honor Awards have been a highlight of the year since 1975. This annual showcase celebrates achievements in preserving, protecting and sharing places that tell the stories of Hawai'i.

This year's honorees include projects at three Royal sites, as well as several places of civic importance that include a fire station, a library and the largest government building in Honolulu. The preservation efforts have helped save a beloved public park, places of worship, a building associated with World War II, and a gem of Mid-century Modern residential design. Preservation programs and interpretive media helped share stories of place through video, books, museum exhibits, online resources, cutting edge photography and scans, and the largest simultaneous hula performance in recent memory.

We are honored to recognize the outstanding achievements of individuals who have dedicated their lives and careers to helping people save historic places, from restoring ancient heiau to documenting the built environment to promoting the preservation of the recent past.

The anniversary recognitions provide examples of community identity and a sense of belonging from the companies, organizations and places that have persevered for a century and more.

We express our deep aloha and appreciation for all those who serve as examples for saving places. Through your efforts, we hope both present and future generations will find enjoyment, education and inspiration.

With aloha,

Kiersten Faulkner
Executive Director



HISTORIC HAWAII FOUNDATION

ABOUT HISTORIC HAWAII FOUNDATION

Almost 50 years ago, Historic Hawai'i Foundation's founders committed to an idea: that people working together can preserve, protect and celebrate historic places that tell the many stories of Hawai'i. Today, utilizing strategic advocacy, education, assistance and partnership programs, Historic Hawai'i Foundation protects places of history and culture that are essential to the quality of life in the Hawaiian Islands.

BOARD OF TRUSTEES

Wendie McAllaster, *President*
Rick Kiefer, *First Vice President*
Len Isotoff, *Second Vice President*
Kekoa Kaluhiwa, *Secretary*
Joanna Oshiro, *Treasurer*
Hallett H. Hammatt, *At Large Officer*
James Kelly, *At Large Officer*
Lehua Kauhane, *At Large Officer*
Vernon Wong, *Past President*

Jeremy Baldwin
Maenette Ah Nee Benham
Linda Chiu
Will Crowley
Donne Dawson
Rosemary Fazio
Pat L. Griffin
Allen Kale'iolani Hoe
Chris Hong
Trinette Kauai
Kawika McKeague
Roy Murai
Nicole Okuna
Wendy Rice Peterson
Greg Pietsch
Barbara Shideler
Vincent Shigekuni
Katie Stephens

STAFF

Kiersten Faulkner, *Executive Director*
Virginia Murison, *Consulting Preservation Architect*
Andrea Nandoskar, *Education Program Manager*
Michelle Kiczek, *Development Associate*



HONOR AWARDS SELECTION COMMITTEE

Pat L. Griffin, *Chair*
Dawn N. Chang, *Ku'iwalu*
Alison Chiu, *FAI Architects*
Gary R. Coover, *Coover Consultants*
Phil Deters, *Community Volunteer*
Kiersten Faulkner, *Historic Hawai'i Foundation*
Hallett H. Hammatt, *Cultural Surveys Hawai'i*
Allen Kale'iolani Hoe, *Attorney*
Chris Hong, *English Hong Architecture*
Beth Iwata, *Historic Hawai'i Foundation*
Kekoa Kaluhiwa, *Kamehameha Schools*
Michelle Kiczek, *Historic Hawai'i Foundation*
Vincent Shigekuni, *PBR Hawai'i & Associates, Inc.*
Katie Stephens, *AHL*
Adriane Truluck, *AECOM*

EVENT COMMITTEE

Alison Chiu, *FAI Architects*
Beth Iwata, *Historic Hawai'i Foundation*
Michelle Kiczek, *Historic Hawai'i Foundation*
Cheyenne Martinez-Boyette, *Bank of Hawai'i*
Wendie McAllaster, *HHF Planners*
Andrea Nandoskar, *Historic Hawai'i Foundation*
Caroline Raftery, *MASON*
Katie Stephens, *AHL*

Proceeds from this event support the Preservation Honor Awards and other programs of Historic Hawai'i Foundation.

SPECIAL MAHALO

to these wonderful people and organizations who helped make this program possible.

DONORS AND CONTRIBUTORS

AEPAC
Cades Schutte LLP
Gary R. Coover
Jeffrey Dodge
HHF Planners
Hida Okamoto & Associates, Inc.
Jim Niess
O'ahu Cemetery
Pacific Cost Engineering, LLC
PBR Hawai'i & Associates, Inc.

PROGRAM SUPPORT

Paula Akana
Jason Antonio
Camille Dahmen, HHF
Preservation Intern
Hawaiian Rent-All
HONBLUE
Lila Lee Photography, LLC
Prestige Valet Services
The Harry & Jeanette Weinberg
Ho'okupu Center

EVENT VOLUNTEERS

Alison Chiu
Anthony Faulkner
Beth Iwata
Michael Kiczek
Cheyenne Martinez-Boyette
Caroline Raftery
Katie Stephens

MAHALO NUI

HISTORIC HAWAII FOUNDATION
IS HONORED TO RECEIVE THE
SUPPORT OF THESE SPONSORS

PLATINUM SPONSOR



CULTURAL SURVEYS HAWAII

GOLD SPONSORS



Kamehameha Schools®

SILVER SPONSORS



VILCEK
FOUNDATION



Congratulations!

Paia Mantokuji Mission on receiving the 2022 Preservation Honor Award
for the Bell Tower Restoration

Thank you Historic Hawaii Foundation, we are proud to have been part of the team!

AEPAC

Photo credit: Hawai'i State Archives

1922

2022

cade s  schutte

A legacy of legal
excellence since 1922

Management Committee: Ryan M. Wilson, Nathan T. Okubo, Amanda M. Jones © 2022 Cades Schutte LLP. All Rights Reserved.

HONOLULU

KONA

WAIMEA

KAHULUI

LĪHU'E

808.521.9200

CADES.COM



Ho'omaika'i 'ana

to the Thomas Square Trellis and
Comfort Station Project on
receiving a prestigious
2022 Preservation Honor Award!

We're proud to have been
part of the team.



1001 Bishop Street, Suite 650
Honolulu, Hawai'i 96813

808.521.5631
www.pbrhawaii.com



ABOUT THE PRESERVATION HONOR AWARDS

Historic Hawai'i Foundation's Historic Preservation Honor Awards are Hawai'i's highest recognition of projects, organizations, or individuals active in preservation, rehabilitation, restoration, or interpretation of the State's archaeological, architectural, and cultural heritage. The Preservation Honor Awards are designed to recognize achievements in interpreting, preserving or restoring Hawai'i's historic and cultural resources.

Award honorees are selected by a committee of professionals in architecture, history, planning, landscape design, architectural history and engineering. Each nomination is considered on its own merit and not in competition with others.

HONORS CATEGORIES



ACHIEVEMENT IN INTERPRETIVE MEDIA honors publicly-available printed publication or visual presentation that interprets the history, preservation or physical characteristics of a historic property.



INDIVIDUAL ACHIEVEMENT recognizes a leader in the preservation field who has made achievements in preserving places significant to the history of Hawai'i. Either site-specific or broad-based efforts may be identified.



PROGRAMMATIC AWARD honors an organization or government agency that engages in advocacy, education, programs or other activity supporting preservation efforts, either for a specific historic property or through a broad-based program.



PROJECT AWARD recognizes a specific project that preserved, rehabilitated or restored a historic property.



ANNIVERSARY RECOGNITIONS celebrate the rich history of kama'āina companies, organizations and institutions that are an important and integral part of the singular culture of the Hawaiian Islands.

**Congratulations to all the
2021 & 2022 award recipients!**



FAI ARCHITECTS
1600 Kapiolani Boulevard Suite 1700, Honolulu, Hawaii 96814

www.funghawaii.com



Architecture

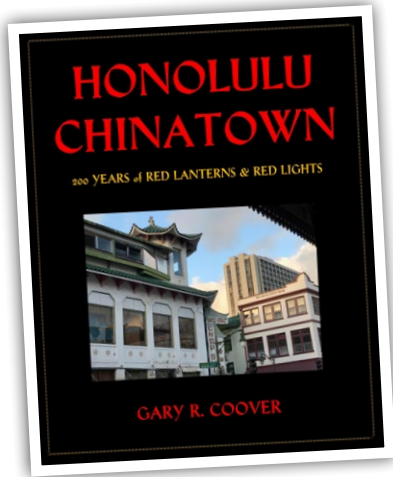
Interiors

Preservation

Planning



ACHIEVEMENT IN INTERPRETIVE MEDIA



Honolulu Chinatown: 200 Years of Red Lanterns and Red Lights

O'AHU

This 458-page non-fiction book includes historical information on every building in Chinatown. Coover has created a strong resource both for researchers and anyone wanting to learn more about the people, places and events that shaped the historic district. This book incorporates technology, with the use of QR code links, enabling the reader to listen and watch audio and videos of rare musical recordings, historical presentations, and archival film footage.

Stakeholders: Gary R. Coover and Rollston Press



Kai Piha: Nā Loko I'a

O'AHU

The documentary film, *Kai Piha: Nā Loko I'a*, explores four Hawaiian Fishponds on O'ahu: Huilua, Waikalua, Kānewai, and Pa'aiau. Hawaiian fishponds were a vital part of Hawaiian culture and provided food for communities throughout the islands. Through intimate interviews and beautiful photography, the film documents how nonprofit organizations are stewarding loko i'a in a pono and impactful way by engaging lineal descendants and community members in cultural practice. Produced for the State of Hawai'i Department of Education, this documentary fulfills its purpose as a valuable educational resource and promises to inspire the next generation of loko i'a stewards.

Stakeholders: The Waikalua Loko I'a; the Kānewai Loko I'a; KUA Hawai'i; Hawai'inuilakea School at the University of Hawai'i at Mānoa; the Huilua Loko I'a; the Pa'aiau Loko I'a; Pacific American Foundation; Ann Marie Kirk and Blue Crater Media and the Hawai'i State Department of Education, Communication Branch.

CONGRATULATIONS
TO ALL 2022 PRESERVATION HONOREES



HHF PLANNERS
places for people

www.hhf.com | @hhfplanners





INDIVIDUAL ACHIEVEMENT



Kenneth Nainoa Perry

HAWAII ISLAND

Kenneth Nainoa Perry is recognized for his stewardship of sacred landmarks on Hawai'i Island and particularly for his leadership in the restoration and maintenance of the Ahu'ena Heiau in Kailua-Kona. His stewardship of Ahu'ena began in the 1990s as a student of Kahu Mauna Roy. Uncle Nainoa continued to maintain the site for over thirty years. With his intimate knowledge of traditional construction methods, materials and protocol, the restoration of Hale Nana Mahina'ai (2017); Hale Pahu (2019) and Anu'u Tower (2021) were achieved. As a mentor, Uncle Nainoa is sharing his knowledge with younger generations so that the preservation of these irreplaceable wahi kūpuna may continue.

Stakeholders: Kenneth Nainoa Perry; Ahu'ena Heiau, Inc. and the Royal Order of Kamehameha.

Ho'omaika'i to all 2022 Preservation Honorees



CULTURAL SURVEYS HAWAII
ARCHAEOLOGICAL, CULTURAL, AND HISTORICAL
DOCUMENTATION SERVICES - SINCE 1982





PROGRAMMATIC AWARDS



The Designation of Kalaupapa Month

MOLOKAʻI

Kalaupapa Month was conceived as a way to pay tribute annually to the lives of the nearly 8,000 men, women and children who were taken from their families and forcibly isolated, mostly at Kalaupapa, due to government policies regarding leprosy (now known as Hansen’s Disease). Proposed to the State Legislature and adopted in 2021, Kalaupapa Month was signed into law by Governor David Ige and first observed in January 2022. The observance provides a meaningful way to remember the sacrifices made by the people sent to Kalaupapa as well as their families who were left behind—and to find inspiration in how the people of Kalaupapa rebuilt their lives through their resilience, sense of community and faith in God. The first Kalaupapa Month featured webinars, e-newsletters, and photo tributes and stories via tv, radio and newspapers by local media.

Stakeholders: Ka ‘Ohana O Kalaupapa; The Noa Webster Aluli Foundation; The Sisters of St. Francis; Yellowbird Graphic Design; Damien-Marianne Catholic Conference and Anwei Law.



Washington Place 175th Anniversary Commemoration

STATEWIDE

The 175th Anniversary Commemoration of Washington Place was an eight-month celebration hosted by the Office of the Governor and First Lady Dawn Amano-Ige. Dynamic and multi-faceted, the program included a proclamation by the Governor, a livestreamed hula performance by fourth grade students across the islands, a special exhibition on Queen Lili’uokalani, a commemorative booklet, a televised documentary, and several educational experiences. The program successfully promoted the history, architecture and restoration of Washington Place, increased public access to the home, and honored the legacy of the Queen. In addition, the program engaged a number of community partners and is an exemplary model of leadership and collaboration.

Stakeholders: The State of Hawai‘i Office of the Governor; the Department of Accounting and General Services/Washington Place and the 175th Anniversary Commemoration Committee.



Our ‘āina.
Our ‘ōpio.
Our future.

A thriving lāhui is rooted in the wellbeing of our ‘āina. By teaching and inspiring our keiki to be stewards of our ‘āina we can create a brighter, more sustainable future for us all.

Hānai i ke keiki, ola ka lāhui



Kamehameha
Schools®

ksbe.edu



@kamehamehaschools



PROJECT AWARDS



3D Documentation of the Cascade Monumental Fountain Sculpture at the Prince Jonah Kūhiō Kalanianaʻole Federal Building

OʻAHU

Commissioned in 1975 by the Art in Architecture Program of the General Services Administration, *Cascade* is significant as one of the rare if not only public works of English sculptor William Mitchell in the United States. Installed in the central courtyard of the Prince Jonah Kūhiō Kalanianaʻole Federal Building and U.S. Courthouse in 1977, the sculpture has deteriorated to a potentially dangerous extent due to water erosion and exposure to natural elements. The employment of 3D imaging sensors, powerful custom-built computers, and innovative software to produce virtual 3D models of the fountain is an exemplary model of how 3D imaging technology can be used as the basis of repair, restoration and conservation of a historic artwork and site.

Stakeholders: General Services Administration; Clifford Planning; Sam O. Hirota, Inc. and Lanmar Services.



Rehabilitation of the Coronation Pavilion

OʻAHU

The Coronation Pavilion was constructed in 1883 for the coronation of King David Kalākaua; it was later relocated to the grounds of ʻIolani Palace where it stands today. This rehabilitation project repaired the extensive spalling of concrete slabs and columns; salvaged the original glass windows; replaced deteriorating window sashes and frames; replaced rotted wood structural elements; and replaced the decorative arches on the roof exterior while maintaining the historic integrity of the domed structure. An interpretive marker was added to the site to further illuminate the pavilion's historic significance.

Stakeholders: Constructors Hawai'i, Inc.; Douglas Engineering Pacific, Inc.; the Friends of ʻIolani Palace and MASON.

CONGRATULATIONS
to all
Historic Hawaii Foundation
Preservation Honor Award
Recipients



SAM O. HIROTA, INC.
Civil Engineering | Land Surveying | 3D Imaging
samhirota.com

DOCUMENTING HAWAII'S ART IN ARCHITECTURE PROGRAM - CASCADE
PRINCE JONAH KŪHIŌ KALANIANA'OLE FEDERAL BUILDING AND U.S. COURTHOUSE




A SAM O. HIROTA, INC.
HISTORIC DOCUMENTATION
PROJECT



PROJECT AWARDS (CONTINUED)



Restoration of the Detweiler House

O'AHU

Constructed in 1973 by architect W.B. "Chip" Detweiler as his private residence, the Detweiler House is an exemplary model of Tropical Modernism, emphasizing structural innovation, form and function to create a space that gracefully integrates with its setting and environment. Following Detweiler's untimely death eight years after he completed the house, subsequent owners made significant alterations to the house. This project removed all non-historic alterations and meticulously restored the original design and functionality of the home.

Stakeholders: Rick Kinsel and Hawai'i Modern Architecture and Interior Design.



Restoration of the Queen Emma Summer Palace Edinburgh Room

O'AHU

The Queen Emma Summer Palace, a former retreat of the Queen, is a wood frame house constructed in 1847 in a Greek Revival design by American merchant H. A. Pierce. It functions today as a house museum. The Edinburgh Room was added to the original structure in 1864. This project removed later-period alterations and restored its original features, including the interior wallpaper, windows, doors and frames. Additional repairs were made to the exterior window shutters, front stairs and shingle roof. The historic features of the Queen Emma Summer Palace were masterfully restored in order to provide visitors to the site with a more accurate representation of the home.

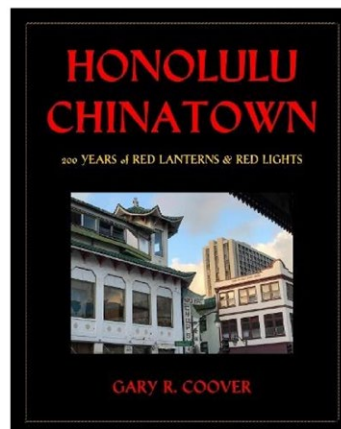
Stakeholders: MASON; Constructors Hawai'i, Inc. and Daughters of Hawai'i.

CONGRATULATIONS

Historic Hawai'i Foundation's
2022 Preservation Honor
Award Recipients!

*Mahalo for all that you do
for Historic Preservation.*

ahl.



New from Rollston Press!

The first comprehensive history of every building in Chinatown with historical photographs and tales of architects, builders, kings, queens, exotic dancers, and merchant princes.

458 pages, 8x10, only \$25

Available at Amazon.com, Indigo Alliance, Tin Can Mailman, and the Chinese Chamber of Commerce.



PROJECT AWARDS (CONTINUED)



Rehabilitation of the Vehicle Bay Doors of the Central Fire Station

O'AHU

This project successfully addressed the safety and health concerns of the Central Fire Station's vehicle bay doors and enhanced their functionality while preserving the original design and integrity of the historic building. The station was designed by architect C.W. Dickey and engineer John M. Young in 1935 and is an iconic example of Art Deco architecture in Hawai'i. The three aluminum-paneled vehicle bay doors facing South Beretania Street, adorned with Moderne motifs and Art Deco ornamentation, are a central architectural element of the station design. Posing a health and safety hazard due to asbestos insulation, the doors were carefully removed, treated and reinforced in accordance with historic treatment standards and additional measures were also taken to improve their technical safety and performance.

Stakeholders: City and County of Honolulu, Department of Design and Construction; Anbe, Aruga & Ishizu, Architects, Inc.; FAI Architects; RLA Conservation; KAI Hawai'i, Inc.; Albert Chong Associates, Inc. and EnviroQuest, Inc.



Rehabilitation of Liliha Public Library

O'AHU

The Liliha Public Library is known for its unique mix of New Formalist and Expressionist design that is exemplary of architect Stephen Oyakawa's work. The project addressed health and safety issues while preserving key features such as the decorative cast concrete screen at the front of the building's exterior and historic storefront windows. Repair of the library's structure, roof-top parking lot, plumbing, air conditioning, and repair of exterior perimeter walls, outdoor garden patio and landscaping, and overall site drainage were completed. This Project Award recognizes the close attention to preserving the building's character, while restoring it as an attractive gathering place for the Liliha community.

Stakeholders: State of Hawai'i Department of Accounting and General Services, Public Works Division; Hawai'i State Library Public System; State of Hawai'i Dept. of Land and Natural Resources, State Historic Preservation Division; FAI Architects; Hida Okamoto & Associates, Inc.; KAI Hawai'i, Inc.; ElecTech Hawai'i, Inc.; MCE International; Walters Kimura Motoda, Inc.; EnviroQuest, Inc.; Nash Architectural Solutions, LLC and Pacific Cost Engineering, LLC.





PROJECT AWARDS (CONTINUED)



Rehabilitation of Facility 97 at Pearl Harbor Aviation Museum

O'AHU

Built in 1942 as the Link Trainer building, Facility 97 served as a combat training site for Navy aviation pilots during World War II. The facility is a contributing feature of the Pearl Harbor National Historic Landmark. After the war, the building fell into serious disrepair. Pearl Harbor Aviation Museum's rehabilitation project allowed the adaptive reuse as a flight simulation training program for middle school students. The rehabilitation work involved replacement of termite-infested exterior studs, posts, trusses and siding; refurbishment of existing windows; and restoration of windows that had been removed. The interior was transformed into functional and attractive classrooms that may serve to inspire youth from across the state to pursue a career in aviation. This is an exemplary model of how a partnership between a nonprofit organization and property owner can result in the preservation of a historic site for public benefit.

Stakeholders: Pearl Harbor Aviation Museum; MASON; Ralph S. Inouye Co. Ltd.; Douglas Engineering Pacific, Inc.; Mechanical Engineers of Hawai'i Corporation and i3ngineers, Inc.



Rehabilitation of the Thomas Square Trellis and Comfort Station

O'AHU

The rehabilitation of the existing comfort station buildings, restoration of the historic trellis, and new construction of a park facilities building were a part of the City and County of Honolulu's Master Plan for Thomas Square, a historic park listed on both the National and Hawai'i Registers of Historic Places. The rehabilitation project included replacing the roof structure and restoring the exterior trellis to its original design. Rehabilitation of the comfort station and caretaker's building for current user needs were kept in scale and materials compatible with and appropriate to the original 1966 structures. This project successfully restored historic buildings that contribute to a beloved landmark in the heart of Honolulu.

Stakeholders: City & County of Honolulu, Department of Design and Construction; PBR Hawai'i & Associates, Inc.; FAI Architects; KAI Hawaii, Inc.; Ronald NS Ho & Associates, Inc. and Kaikor Construction Company, Inc.



PROJECT AWARDS (CONTINUED)



Mantokuji Mission of Paia Bell Tower Restoration

MAUI

This project succeeded in restoring the historic bell tower at the Mantokuji Soto Mission in Paia, Maui. Founded in 1906 by Reverend Sokyo Ueoka, Paia Mantokuji is the only Soto Zen Buddhist temple on Maui and the second oldest existent Buddhist temple on the island. The two-ton bell was made for the Mantokuji Mission and shipped to Maui from the Soto headquarters in Japan. The bell tower had experienced severe structural damage to its roof and tower framing due to termites and water infiltration. The roof of the bell tower was dismantled, repaired and re-sheathed with new cedar wood shingle roofing. All of the existing column and footings were repaired with epoxy injection, after which the repaired roof structure was reattached to the columns. Decorative Kumimono (bracketing pieces) was repaired. The bell tower will remain as a stable structure, enabling the traditional ringing of the bell during ceremonies and events for generations to come.

Stakeholders: Mantokuji Mission of Paia; AEPAC; Pro-Bilt Construction Co., Inc.; Engineering Design Group, Inc. and J. Uno & Associates.

From *property search* to *home sweet hale*

LOCAL MATTERS IN HAWAII
Start Here ▶ At the Source for Hawaii's Real Estate

Find verified open houses, properties for sale or rent, and REALTORS® ready to support you throughout the process at **HiCentral.com**.

100 years
Honolulu Board of REALTORS®
1922-2022

Congratulations
2022 Preservation Honor Award Winners

KAI HAWAII, INC.
STRUCTURAL & FORENSIC ENGINEERS
50 S. Beretania St., #C-119C
Honolulu, HI 96813
808.533.2210 | www.kaihawaii.com

An Employee-Owned Company

Hoomaikai

to the 2022 Historic Hawaii Foundation Preservation Honor Awards Recipients

Your hard work in preserving the past keeps our history alive for the future.

IOLANI PALACE | IolaniPalace.org

VILCEK FOUNDATION

Congratulations to Rick Kinsel on receiving a prestigious 2022 Preservation Honor Award for the restoration of the Detweiler House!

ANNIVERSARY RECOGNITIONS

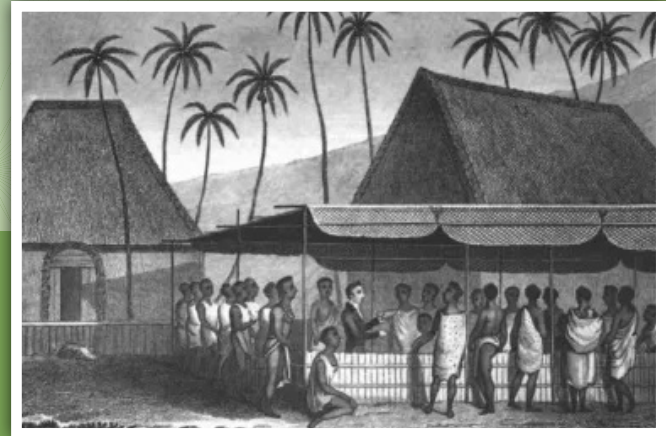


1822

Bicentennial, 200th



Hawaiian Mission Houses Printing Press, Honolulu, O'ahu



Arrival of Tahitian Missionaries to Hawai'i



Parker Ranch, Waimea, Hawai'i Island

1847

Dodransbicentennial, 175th



Washington Place, Honolulu, O'ahu

1872

Sesquicentennial, 150th



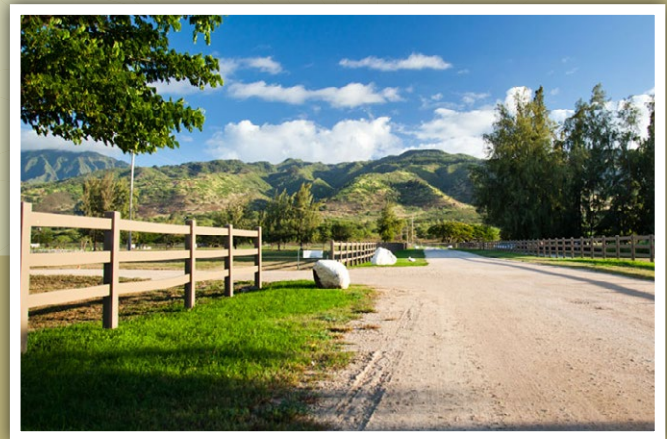
Ali'iōlani Hale, Honolulu, O'ahu

1897

Quasquicentennial, 125th



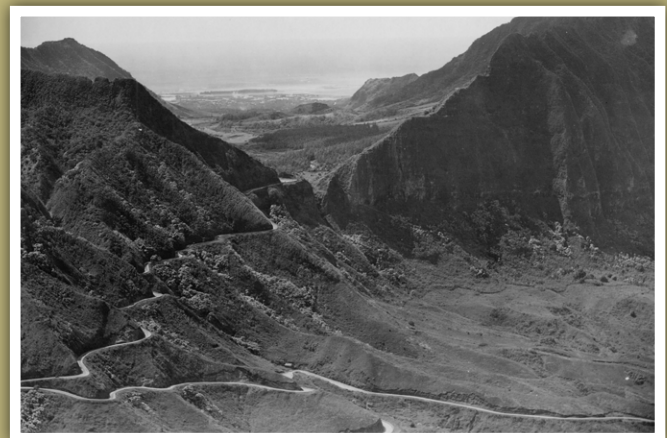
Bank of Hawai'i, Statewide



Dillingham Ranch, Waialua, O'ahu



Irwin Block (Nippon Jiji Building), Honolulu, O'ahu



Pali Road & Highway, Honolulu, O'ahu

1922

Centennial, 100th



Cades Schutte LLP, Kaua'i, O'ahu, Maui, Hawai'i Island



Hawai'i Library Association, Statewide



Honolulu Board of REALTORS, O'ahu



Ka Leo O Hawai'i, Honolulu, O'ahu



Hawai'i Education Association, Statewide



Hawai'i Theatre Center, Honolulu, O'ahu



Honolulu Shade Tree Commission, O'ahu



King David Kalākaua Building, Honolulu, O'ahu



Konowaena High School, Kealahou, Hawai'i Island



La Pietra, Walter Dillingham Residence, Honolulu, O'ahu



Mānoa Valley Church,
Honolulu, O'ahu



Pacific Building, Hilo, Hawai'i Island



Pu'unēnē School, Pu'unēnē, Maui



Wai'oli Tea Room, Honolulu, O'ahu



St. Rita Catholic Church, Haiku, Maui



Wheeler Army Airfield, Wahiawa, O'ahu



2022 FRANK HAINES AWARD FOR LIFETIME ACHIEVEMENT



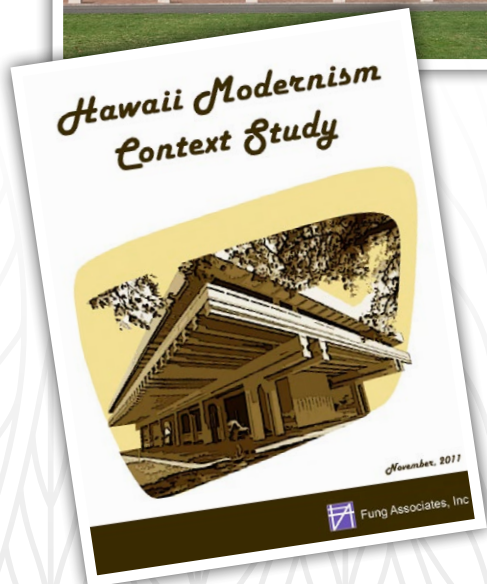
Tonia Moy, AIA

**VICE PRESIDENT AND DIRECTOR OF PRESERVATION,
FUNG ASSOCIATES, INC.**

Tonia Moy's comprehensive career in historic preservation spans over three decades of work throughout Hawai'i. Tonia worked for many years at the Hawai'i State Historic Preservation Division where she rose to the rank of architecture branch chief. Her good nature and amiable personality help make the planning and preservation process, which can sometimes be controversial and contentious, easier to navigate. She is a persuasive and persistent advocate for preservation, always with a goal towards finding workable solutions.

As vice president of Fung Associates, Inc., Tonia also serves as the firm's Director of Preservation to oversee compliance and consistency in the historic review process. She tirelessly serves as a mentor to younger staff, thus helping to nurture future cohorts of preservation-minded practitioners, and the success of the preservation team is a testimonial to her attributes.

In her spare time, Tonia is a respected and active preservation professional across key organizations. She served on the Historic Hawai'i Foundation Board of Trustees (2004-2010) and Preservation Policy Committee, and in past years the Preservation Honor Awards Committee. She is on the Dean's Advisory Committee at the School of Architecture, helping to shape and inspire future generations of preservationists. Tonia is a past president, a founding member and current active board member of Docomomo US, Hawai'i Chapter and is a former director of the AIA Honolulu Chapter.





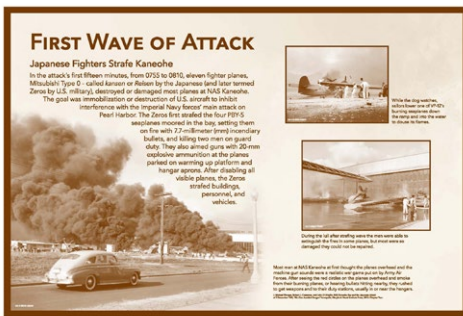
Ann K. Yoklavich

ARCHITECTURAL HISTORIAN

Ann Yoklavich's lifetime passion has been to research and record Hawai'i's history through the lens of the built environment. Her investigations into historic properties – both military and civilian – have spanned not only the Hawaiian Islands, but also remote sites throughout the Pacific. As an architectural historian, Ann worked with Mason Architects Inc. (MASON) for over three decades, earning a reputation for scholarship, accuracy and rigor. During her time with MASON, she conducted exhaustive research throughout Hawai'i, as well as in Japan, Guam, Tinian, and Midway Atoll. She retired at the end of 2021.

Ann served as a mentor and teacher to emerging architectural historian professionals both within and outside of MASON. She generously shared her historical knowledge, research methods and resources, and has proven to have an eagle eye for fact-checking when it comes to editing any historical topic.

One of Ann's "labors of love" has been a dedication to sharing with the public her knowledge of Hawai'i's architectural history. For many years, Ann has given selflessly of her time, and continues to lead architectural walking tours of downtown Honolulu for the American Institute of Architects and volunteer with Historic Hawai'i Foundation.



ABOUT THE AWARD

The Haines Award recognizes an individual's lifetime commitment and contributions to the preservation of Hawai'i's heritage. Established in 2009 and named for master architect Frank Haines, FAIA, the award is presented to individuals who have demonstrated sustained and outstanding achievements in the areas of preserving the significant historic and cultural places of Hawai'i. As the award was not given last year during the pandemic, this year the award is being presented to two individuals who have had a lasting impact through their outstanding efforts to document, preserve, protect and celebrate Hawai'i's historic places



WAHI PANNA STEWARDS

PLACES TELL STORIES



Join the Wahi Pana Steward
Monthly Giving Program

The Benefits of Recurring Monthly Giving:

Helps HHF be more efficient and impactful in our statewide preservation efforts by allowing us to spend more time and resources on:



Educating individuals & organizations about preservation



Building effective community momentum to save historic places



Engaging in long-term preservation planning



Advocating for smart legislation

Offers an easy way for **YOU** to support the preservation of Hawai'i's historic places:



**No annual renewal reminders
No checks to write**



Peace of mind knowing you're helping to save "Wahi Pana" or storied places of Hawai'i for future generations.

In Hawaiian, "Wahi Pana" are locations or sites that are legendary, celebrated or noteworthy. Sometimes translated as "storied places," wahi pana are irreplaceable historic and cultural resources of the Hawaiian Islands.

The Stewards program provides an opportunity to support Historic Hawai'i Foundation's efforts to preserve and protect storied places by committing to give a monthly donation.

With a monthly donation of \$10, \$15, \$20, \$25 or more, you'll help save Hawai'i's historic places all year long, providing financial support to save the places that matter!

Learn More at:

historichawaii.org/wps





HAWAII HISTORIC DISTRICTS

Story Maps

Learn about historic districts in Hawai'i through online tours and historic information.



Hawaii Capital Historic District

Explore the civic, cultural, historic, architectural and artistic significance of Hawai'i's Civic Center in the heart of Honolulu, O'ahu.



Hale'iwa a Historic Village by the Sea

Explore the historic places in scenic Hale'iwa, O'ahu from Hawaiian settlements in 1000 AD through its current status as a gateway to the North Shore's world famous surf breaks.



Historic Honoka'a Town

Explore Honoka'a on the Hāmākua Coast on the Island of Hawai'i. Step back in time to experience the historic commercial district in the heart of town.



Nā Wahi Pana o Hilo

Explore the storied places of Hilo, Hawai'i between the Wailoa and Wailuku Rivers with stories and histories from earliest settlement, through the sugar plantation era and major events of the 20th century.



**HISTORIC
HAWAII
FOUNDATION**


**CULTURAL SURVEYS
HAWAII**

HistoricHawaii.org/heritagetourism

Produced by Historic Hawai'i Foundation and Cultural Surveys Hawai'i. Mahalo to partners Mid-Pacific Institute, Hale'iwa Main Street, Lyman Museum, ASM Affiliates, University of Hawai'i at Hilo, the Honoka'a Town Project and Honoka'a Heritage Center. Funding support for the Hilo and Honoka'a Story Maps was provided by the Hawai'i State Foundation on Culture and the Arts.

HISTORIC
HAWAII
FOUNDATION



680 Iwilei Road, Suite 690
Honolulu, Hawai'i 96817
www.historichawaii.org