

HISTORIC HAWAII FOUNDATION



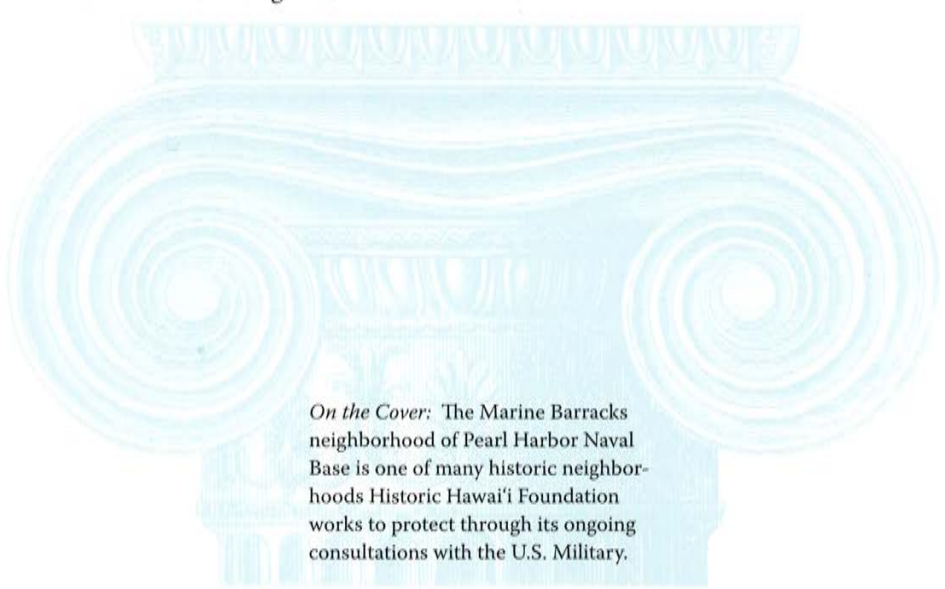
2006 ANNUAL REPORT

TRADITION

Historic Hawai'i Foundation has a passion for telling stories about people, history and culture through the celebration of historic buildings and communities. HHF explores, preserves and nurtures diverse cultural and historical places and perspectives of Hawai'i. Heritage of every historical era should remain as part of the communities' civic treasures.

By taking a systemic approach to preservation, Historic Hawai'i Foundation can leverage resources to achieve greater impacts. Rather than fight one preservation battle at a time, we want to help find solutions that prevent those battles from being necessary.

There are numerous opportunities available to us and a strong preservation voice is as necessary now as it was at our founding in 1974.



On the Cover: The Marine Barracks neighborhood of Pearl Harbor Naval Base is one of many historic neighborhoods Historic Hawai'i Foundation works to protect through its ongoing consultations with the U.S. Military.

HISTORIC HAWAI'I FOUNDATION MISSION STATEMENT

The purpose of the foundation shall be to preserve and encourage the preservation of historic buildings, objects, communities, and sites relating to the history of Hawai'i; to promote awareness of and respect for all that is historically significant and architecturally distinctive in our State; and through these efforts, to keep alive and intact for the enrichment of present and future generations the inherent beauty of the Hawaiian Islands and its unique historic role in the development of the Pacific Basin.





Aloha e kakou,

Reflecting on my two terms as President, I have been blessed with a board of trustees who have answered the call to community service by providing extraordinary leadership in negotiating our way through some daunting challenges while also guiding us toward embracing new opportunities. This has been a year of growth and change. Executive Director Kiersten Faulkner began in January of 2006, bringing fresh perspectives and new energy to the Foundation. The catalyst of new leadership energized the Board of Trustees, which renewed its involvement in committees, strategic planning, operational policies and instituting best practices for the industry. We had our most successful Winter Benefit, both in attendance and in fundraising, since the Kama'āina of the Year program began. We also had the highest level of membership income and annual membership renewal rate, demonstrating once again that HHF's members are the backbone of the organization.

Our community of preservationists has grown to include an alliance of those who care deeply about the built environment and recognize that the past can remain a part of a vibrant present, and sustainable future. The Historic Hawai'i Foundation 'ohana includes those working in community development, land use and design, public policy, heritage tourism, education and advocacy, as well as people from throughout the Islands who have a love of these special places.

One of our challenges has been fostering the public will to take meaningful action to preserve and use historic places. As public awareness increases, community members are motivated to recognize and protect the places that they love. There is an ever-increasing awareness of the ways that the sites, communities and buildings that reflect the past continue to be living parts of the present and gifts that current generations leave for the future.

This year Historic Hawai'i Foundation has reached out and touched thousands of people through our publications, broadcast media partnership, and through direct participation in our events and programs. Many thousands more are the beneficiaries of the preservation of Hawai'i's heritage.

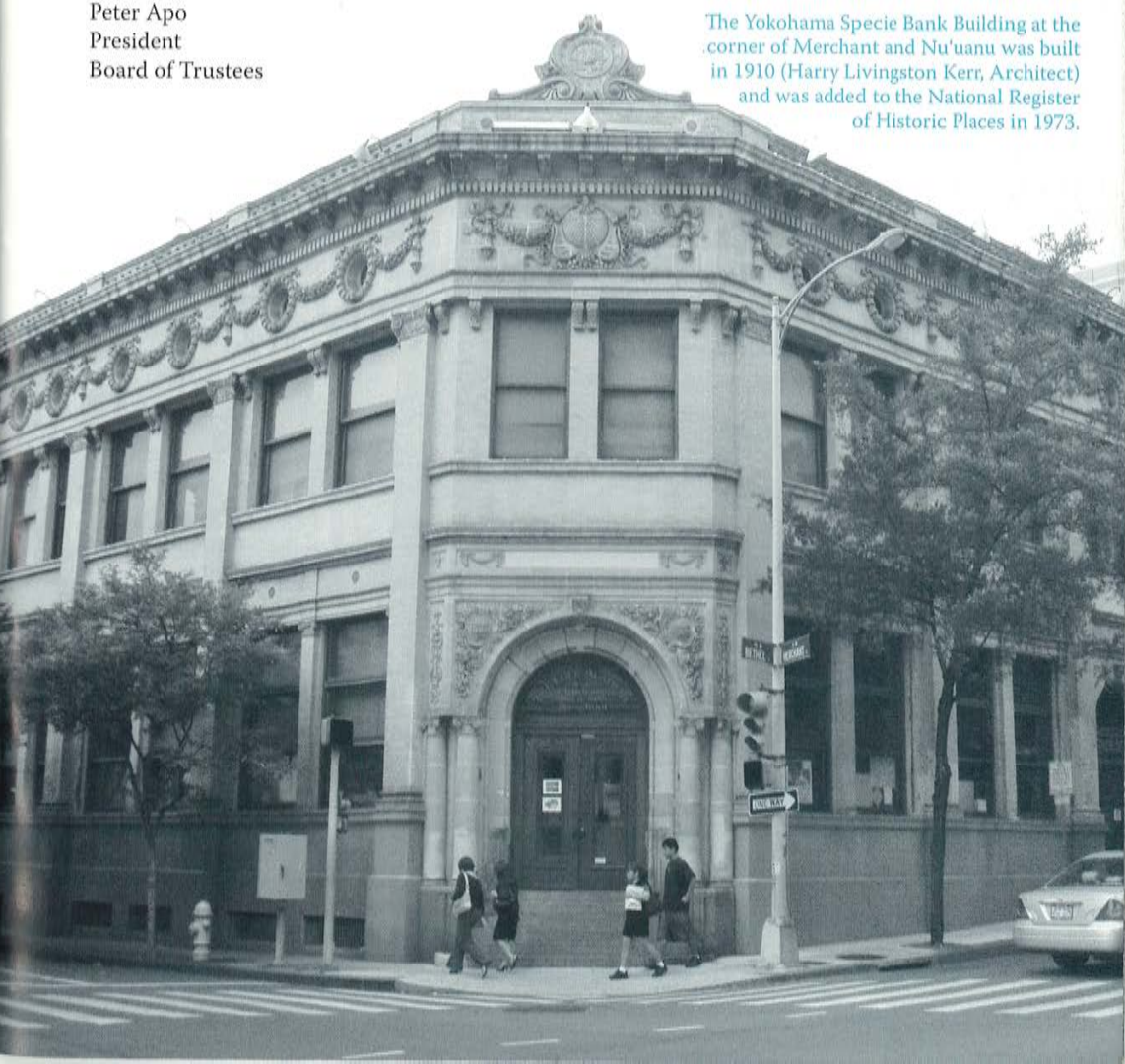
It has been an honor and a privilege to serve as HHF's president. In May of this year at our annual meeting the torch will be passed to Katie McNeil who will succeed me as chair. I will continue to serve in other capacities and to support the leadership transition. I am very grateful for having the pleasure of serving our community in such distinguished company as the members of our board and for the support of a devoted and committed membership.

Aloha Pumehana,



Peter Apo
President
Board of Trustees

The Yokohama Specie Bank Building at the corner of Merchant and Nu'uano was built in 1910 (Harry Livingston Kerr, Architect) and was added to the National Register of Historic Places in 1973.





In 2006, Historic Hawai'i Foundation marked 32 years as a statewide voice for preservation. Over the years, HHF has stood for the preservation of historic buildings, objects, sites and communities. Our programs and projects have responded to contemporary needs and issues, always guided by the mission to promote awareness of, and respect for, all that is historically significant and architecturally distinctive in Hawai'i.

While there will always be times when HHF needs to respond to an imminent threat to a specific historic site or building, we have broadened our approach to take the initiative in thinking about what preservation means to our communities. We are shifting from thinking about preservation site-by-site to approaching it as a system of values that should be integrated at the basic levels of community building.

During the past year, a long-term, systemic approach to preservation underscored much of Historic Hawai'i Foundation's work. We determined that HHF can create an enduring environment for preservation by shaping public policies that develop and encourage effective systems that motivate and regulate preservation actions.

A systemic view of preservation creates a set of circumstances that makes it easier to do the right thing and more difficult to choose activities that are hostile to preserving Hawai'i's sense of place.

Using this framework, Historic Hawai'i Foundation has developed three major program areas: technical assistance, education, and preservation advocacy, including pursuing a public policy agenda. The 2006 Annual Report outlines the major activities in each of these areas, as well as Membership events and Operational considerations.

A comprehensive integration of programs, operations, membership and community outreach is the long-term strategic goal for the organization. We look forward to continuing to focus on the areas that make a significant difference to our communities and the places that we treasure.

Aloha,

Kiersten Faulkner
Executive Director

MEMBER ACTIVITIES

ANNUAL MEETING 2006

Historic Hawai'i Foundation held its annual meeting on May 18, 2006, at the USS Bowfin Submarine and Museum at Pearl Harbor. Before the business meeting, USS Bowfin Education Director Charles Hinman gave HHF members and guests an exclusive tour of the World War II submarine and the museum.



PHOTO BY W. LABBY

Charlene & Curt Nakamura are introduced at HHF's 2006 Annual Meeting.

The annual meeting included distribution of the 2005 annual report, re-election of Peter Apo to a second year as board president, and election of new trustees. The new trustees elected to a three-year term were David Cheever, Gregory C. Chun, Eric Crispin, Robert Iopa, Timothy E. Johns, Curt Nakamura, Lorraine Minatoishi Palumbo and Ted Rachlin. Members also elected Carol Fukunaga to fill a two-year term that resulted from a

vacancy on the board. Special thanks were offered to retiring trustees Corinne Ching, Patricia Godfrey, Carolyn Larson, John Lyles, Easton Manson and Thomas Quinlan.

PRESERVATION HONOR AWARDS

On May 18, Historic Hawai'i Foundation announced the recipients of the 2006 Preservation Honor Awards.

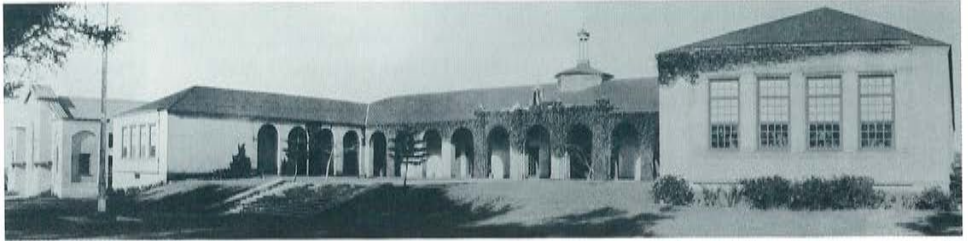
Preservation Certificates for an Individual

HHF honored the contributions to the cause of preservation through their activities with Mālama o Mānoa of Patricia Avery, Linda LeGrande and Joan Dempster. This triumvirate of volunteers has been the driving force behind Mānoa's successful house tours for many years.



PHOTO BY W. LABBY

From Left: Joan Dempster, Linda LeGrande and Patricia Avery holding their 2006 Preservation Honor Awards for their volunteer work with Mālama o Mānoa. The annual meeting and awards ceremony were held at the USS Bowfin Memorial which is visible in the background.



Old Maui High School is being restored by the Friends of Old Maui High School, which received a 2006 Preservation Commendation for their work.

Preservation Commendations for an Organization

The Friends of Old Maui High School is a community-based, grassroots organization formed in 2004 to rescue Maui's historic school from years of neglect and deterioration and to restore it to purpose and prominence, as a community resource education facility. After restoration, this building designed by famed Hawai'i architect Charles W. Dickey, will be known as the Patsy Mink Center.

East-West Center

"Japanese Temple Architecture in Hawaii" Exhibit

The East-West Center has exhibits focusing on the continuity and preservation of traditional culture. By highlighting aspects of traditional culture that are under threat of modernity or larger cultural hegemony, the East-West Center strives to help traditional artists, bearers of traditional arts, and institutions strengthen their ability to preserve vital aspects of their artifacts, arts and culture. We honored the organization for presenting an excellent and timely exhibit entitled "Japanese Temple Architecture in Hawaii." This exhibit was created by Dr. Lorraine Minatoishi Palumbo, the leading scholar on Hawai'i's Buddhist

Honorees gather at Pearl Harbor at sunset to display their award certificates.





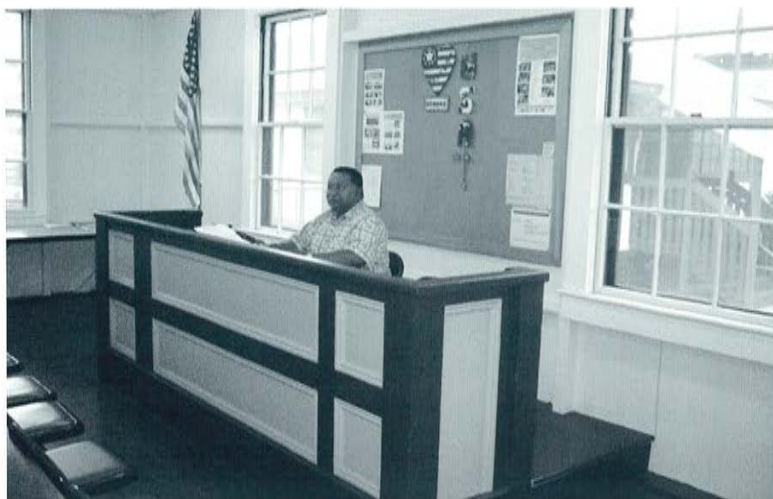
The "Japanese Temple Architecture in Hawaii" exhibit at the East-West Center received a 2006 Preservation Commendation.

Temple architecture, photographer Paul Chesley, and Curator Michael Schuster. The exhibit targeted those interested in historic preservation, preservation specialists and architects. It was attended by approximately 5,000 persons.

County of Hawai'i, Department of Parks and Recreation
Old Waimea Courthouse, Tax Office and Fire Station

The architectural details of the Old Waimea Courthouse, Tax Office & Fire Station were restored through the diligent efforts of the staff at this agency. This restoration effort greatly





The Old Waimea Courthouse is one of three restoration projects by the County of Hawai'i and the Department of Parks and Recreation receiving a Preservation Honor Award in 2006.

enhances the architectural heritage of Waimea and is a successful example of adaptive reuse of civic buildings. The award was given to Patricia Englehard and James Komata of the County of Hawai'i Department of Parks and Recreation.

Preservation Honor Awards for Publications

Na Lani Kaumaka: Daughters of Hawai'i: A Century of Historic Preservation tells the story of the Daughters of Hawai'i and echoes their mission: to perpetuate the memory and spirit of old Hawai'i. The book was written by Barbara Del Piano, who received the award along with Daughters of Hawai'i Executive Director David Scott.

Landmarks that have benefited from the efforts of the Daughters are covered extensively and each has its own chapter. They include the cliffside plaque that marks the 1795 Battle of Nu'uuanu on O'ahu; the birth stone of Kauikeaouli — King Kamehameha III — at Keauhou Bay; Hanaiakamalama or the Queen Emma Summer Palace on O'ahu; Hulihe'e Palace and Kukaniloko, a birthing place reserved for the highest-ranking ali'i near Wahiawa, O'ahu.

Kona Historical Society

Sheree Chase accepted two awards for publications of the Kona Historical Society. *Historic Kailua Village Map* is a 24-page booklet that is the sole publication devoted to the history of one of the most historic neighborhoods in our island state. Published in 2005, the booklet contains archival photographs, maps and information about 11 historic areas in the town of Kailua on the Kona coast.

"E Pili Ana No Kona" is a 17-minute video that presents an overview of Kona history beginning with the arrival of Captain James Cook in 1779. This video focuses on the contributions made by Kona's culturally diverse immigrant communities in the 19th and 20th centuries and the built environment associated with these communities. It was designed to work in tandem with *Guide to Kona Districts: Ancient Historic Heritage Places*.

Mō'ili'ili Community Center, represented by Executive Director Rebecca Ryan, received an award for their history of the neighborhood. *Mō'ili'ili – The Life of a Community* reflects upon a community that has survived over time with spirit, life growth and change. The book is a comprehensive compendium of the social, economic and environmental aspect of



Mō'ili'ili-The Life of a Community

Mō'ili'ili: The Life of a Community is a 2006 Preservation Honor Award-winning publication by the Mō'ili'ili Community Center documenting the history of the community.

Photo Courtesy of the Mō'ili'ili Community Center

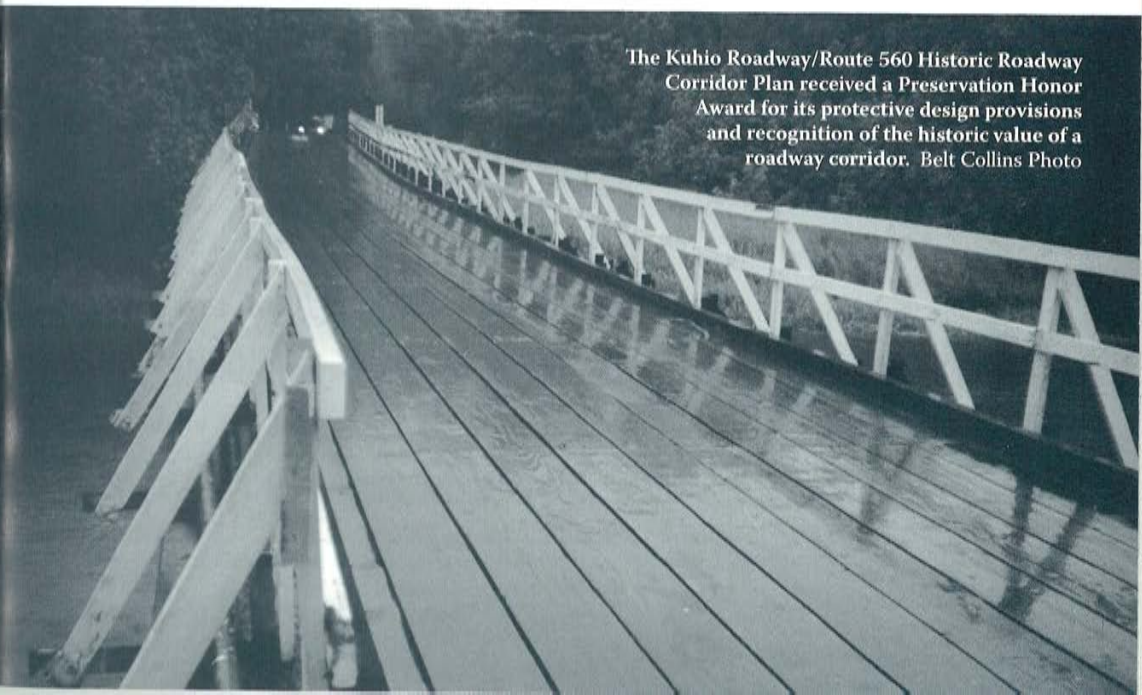
the community from pre-historic times to the present. It is the first thoroughly researched, extensively documented history of Mō'ili'ili.

Preservation Award for a Specific Building Site, Project or Structure

Belt Collins & the State Department of Transportation, Highways Division.

The Kuhio Roadway/Route 560 Historic Roadway Corridor Plan is the first of its kind in the state to recognize the historic value of a roadway corridor and establish protective design provisions. The plan includes a framework for decision-making and future agency actions that incorporate non-traditional design standards which emphasize historic preservation, restoration, rehabilitation and maintenance in lieu of demolition. The plan includes a sensitive design approach that can act as a model for other historic roads in the state.

The Kuhio Roadway/Route 560 Historic Roadway Corridor Plan received a Preservation Honor Award for its protective design provisions and recognition of the historic value of a roadway corridor. Belt Collins Photo





The Kaluakini House's entrance before (left) and after (right) James Stiebinger's two years of work to restore the home.

James Stiebinger

Kaluakini House, Lahaina

On historic Front Street in Lahaina, where many of the charming old cane houses have been razed in favor of larger and more modern dwellings, stood a mysterious house buried in overgrown shrubbery and cast off junk. Many people were intrigued with the structure, not quite being able to make out anything but sketchy outlines of a once elegant home through the tangle of trees and shrubs that hid the home from view. The home was in desperate condition and many thought it was beyond saving. However, James Stiebinger, a custom builder whose specialty was building restoration, decided to take on the most difficult restoration project of his life, the Kaluakini house at 450 Front Street. The project would consume almost two years of his life — a frustrating, painstaking, expensive and exhausting restoration. The result is a complete restoration of this beautiful structure to a new life.

Nancy & Ronald Knaack

Hale Kealoha, Kapa'a

Historic elements of **Hale Kealoha** located on Kealoha Road, Kapa'a have been sensitively restored. Parts of the historic fabric that had been removed or were deteriorated were replaced in kind. The historic elements of the home were maintained as the home was upgraded.



Hale Kealoha is the home of Nancy and Ronald Knaack, who were awarded a Preservation Honor Award for maintaining the historic elements of the home while it was being restored and upgraded.



Select period elements of the interior of the Tokumi's historic home.

Ruth and George Tokumi and Fung Associates and Alan Shintani, Inc. Mānoa Road Home, O'ahu

The exterior of this is 1940 era 'ohana unit had been covered with vinyl siding. Other elements of its historic fabric had been altered over the years. The new owners made a commitment to recapture the home's original architectural integrity. The historic exterior siding was restored to this residence and select period elements of the historic interior were included in the final restoration.

President's Citation

In 2006, HHF established a new award called the President's Citation. This award is a personal recognition from HHF's president to someone who contributes not only to the cause of historic preservation, but also specifically to Historic Hawai'i Foundation. President Peter Apo award to retiring Trustee Quinlan served as a During his tenure, he dozens of restoration Island. He has worked partners to find adaptive and to restore buildings the Interior standards. Mr. many applications for the State and National Places. In addition to his has also donated many Foundation itself. He was HHF's satellite office on



Tom Quinlan was awarded the President's Citation for his service to historic preservation in Hawai'i and to Historic Hawai'i Foundation.

PHOTO BY W. LABBY

presented this inaugural **Thomas Quinlan**. Mr. Trustee for six years. actively participated in projects on the Big with public and private uses for vacant buildings following the Secretary of Quinlan has also submitted buildings to be listed on Registers of Historic preservation activities, he hours to Historic Hawai'i instrumental in opening the Big Island, providing a

physical presence there for the organization. He has been extremely active in membership drives and in promoting HHF throughout the county.



HHF members convened at the U.S. Army Pacific headquarters in historic Richardson Hall on Palm Circle (Ft. Shafter).

PHOTO BY MO RADKE

MEMBERS' TOUR OF HISTORIC FORT SHAFTER

On August 25, some 40 members of Historic Hawai'i Foundation had the rare opportunity of touring the historic army post of Fort Shafter. Army Historian David Hilkert led the visit to Palm Circle National Historic Landmark, the Women's Air Raid Defense Tunnels, Richardson Hall and Historic Quarters Five, where Lt. General and Mrs. John Brown III hosted lunch. The visit to the WARD tunnels was supplemented by the remembrances of two WARD veterans, Ellin Burkland and Kathy Cooper.

HERITAGE ASSOCIATES RECEPTION

In September, Heritage and Corporate Heritage Association members and their guests enjoyed a special *Mahalo* evening at the Kahala Hotel. The annual reception thanks the Heritage Association members for their sustaining support of HHF's mission and programs. The event was also used to announce the selection of Sam and Mary Cooke as the 2006 Kama'aina of the Year.

KONA COFFEE CULTURAL FESTIVAL

Kona Joe's Coffee sponsored a fundraising event for preservation projects in West Hawai'i on November 11 as part of the Signature Cup competition during the Kona Coffee Cultural Festival. Attended by some 200 people, the highlight of the event was a barista competition to determine who could create the best signature drink. Attendees also enjoyed food, music, and exhibits that highlighted and celebrated the history of West Hawai'i and its architectural, cultural and natural heritage.

HHF extends its thanks to the staff and crew of Kona Joe Coffee, Keauhou Resorts and Historic Property Services for their support of the event, as well as to those who donated or purchased items.

HHF gives thanks to those supporters who donated items to the HHF/Kona Joe's silent auction:

- Body Glove Cruises
- California Hotel & Casino
- Grand Hyatt Kauai
- Hawai'i Theatre Center
- Laupahoehoe Train Museum
- Maui Divers of Hawai'i
- Mauna Kea Resort
- Na Pali Explorer

- Hilton Waikoloa Beach Drive
- Ice Palace
- Kona Boys
- Kona Country Club
- Outrigger Keauhou Beach Resort
- Parker Ranch
- Shaka Shoes
- The Friends of 'Iolani Palace

Joining Historic Hawai'i Foundation in the preservation exhibits were:

- Hawaiian Gourd Society
- Historic Property Services
- Holualoa Heritage Corridor
- Kona Historical Society
- Pūlama Ia Kona
- National Park Service
- Society for Kona Education and Arts
- Waimea Historical Association

WINTER BENEFIT HONORS SAM AND MARY COOKE

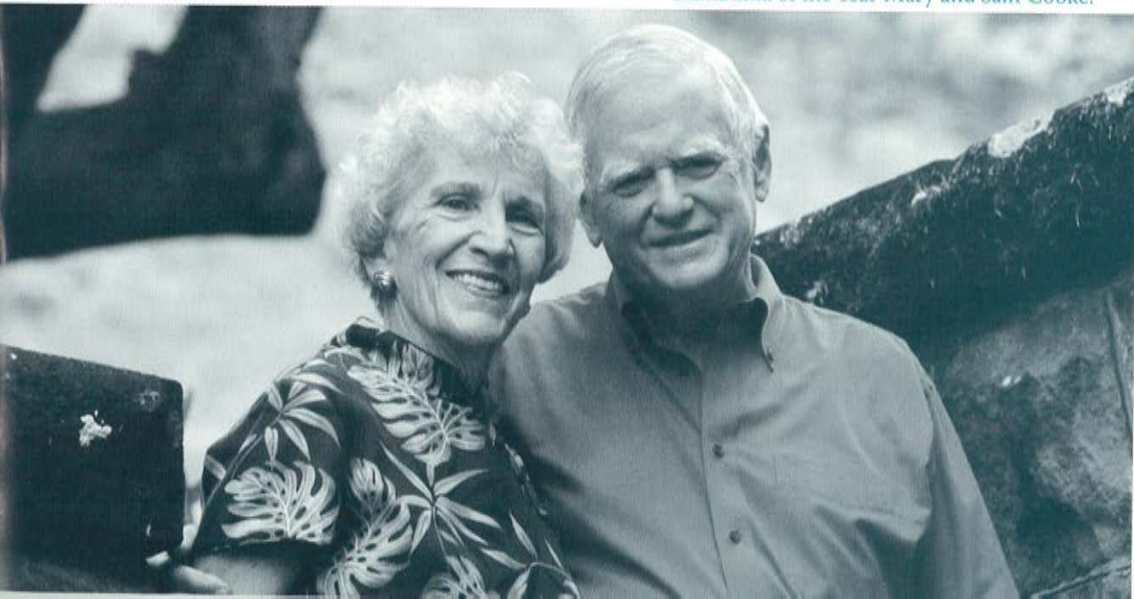
Historic Hawai'i Foundation's 19th Annual Kama'aina of the Year event was held on December 2, at the Royal Hawaiian Hotel. The event was attended by 550 people, setting a new record for both attendance and contributions in support of Historic Hawai'i Foundation's mission and programs.

The annual event recognized and lauded the preservation activities of Sam and Mary Cooke. They were honored for establishing the Mānoa Heritage Center in 1996, whose mission is to promote the thoughtful stewardship of the natural and cultural heritage of Hawai'i. The Heritage Center interprets its historic property that consists of Kūka'ō'ō Heiau, a Native Hawaiian Garden and the historic home Kualī'i. The Center also preserves and interprets the history of Mānoa Valley. The heiau and historic home are listed on the National Register of Historic Places.

In recognition of the award, the State House of Representatives issued a resolution honoring the Cookes and Governor Linda Lingle proclaimed December 2, 2006 as "Sam and Mary

Kama'aina of the Year Mary and Sam Cooke.

PHOTO COURTESY OF SAM & MARY COOKE



Cooke Day" in the State of Hawai'i. Honolulu City Council sent an honorary certificate to Mr. and Mrs. Cooke in a formal declaration signed by all council members.

The program highlighted the history and preservation of the Mānoa Heritage Center. The event also included entertainment by the Harry James Orchestra and a holiday silent auction.

Historic Hawai'i Foundation annually honors individuals or organizations that have contributed to preserving Hawai'i's rich history. The Kama'āina of the Year benefit furthers HHF's mission to preserve and encourage the preservation of historic buildings, objects, sites and communities. The Winter Benefit is Historic Hawai'i Foundation's largest fundraising event and accounts for one-third of its annual operating budget.

The Winter Benefit was overseen by event co-chairs Peter S. Ho and Timothy E. Johns. Other committee members were C. Scott Bradley, Eric G. Crispin, Michael Fisch, Katherine MacNeil, Matthew Megorden, Michael O'Malley, Michael T. Pfeffer and Jan Yokota.

Silent Auction

The Silent Auction was co-chaired by Michael T. Pfeffer and Rick Piper. Silent auction contributors were:

Ala Moana Center	Stephanie Kono
Thom Benedict	Na Mea Hawai'i
Carats & Karats Appraisal	Lea Ok Soon Hong
Chachkies by Rebecca	Outrigger Enterprises
Chamber Music Hawai'i	Paradise Cruise, Ltd
Paul Chesley	Pearl International
Grand Hyatt Kauai	Rick Ralston
Hapuna Beach Prince Hotel	Shangri La/ Doris Duke Foundation for Hawai'i
Gourd Society	Islamic Art
Hawai'i Opera Theatre	Waimea Plantation Villages
Honolulu Academy of Arts	Michelle Wie

Volunteers

Lori Yamada served as volunteer coordinator. Event volunteers were Gary Canner, Nancy Magraudy, Marianna Marwell, Stephen Nash, Alan Nemiroff, Luanne Off, Mary O'Leary, Mo Radke and David Scott.

Dr. Sam 'Ohukani'ohi'a Gon, III, offered the opening oli and Cy Bridges offered the pule.

Contributors

In-kind contributions of goods and services were donated by:

Centerpiece Design: Mary Philpotts McGrath

Graphic Design: toast_ED, LLC

Mānoa Heritage Center Artwork: Allyn Bromley

MHC Gift Certificates: Mānoa Heritage Center

Printing: HONBLUE

Advertising: The Honolulu Advertiser

Wines: JMD Beverages, Better Brands and Paradise Beverages

Historic Hawai'i Foundation gratefully acknowledges the generous support of the following Winter Benefit 2006 Sponsors and Supporters:

Founders

Mr. & Mrs. Samuel A. Cooke

Benefactors

Bank of Hawaii

Christopher J. Damon Haig

Easton & Nedra Manson

Michael & Lacey Pfeffer

Sharon & Thurston Twigg-Smith

Shidler College of Business

Patron

Actus Lend Lease

The Honolulu Advertiser

Scott & Lisa Bradley

Carlsmith Ball LLC

Robert & Betty Wo

First Hawaiian Bank

Hawaiian Electric Company, Inc.

Tim & Robin Johns

Ko Olina Resort/The Resort Group

Mike & Trish O'Neill

The MacNaughton Group

WCIT Architecture

Benefactor

Alexander & Baldwin, Inc.

Nancy Bannick

Central Pacific Bank

Group 70 International

Island Insurance Company

Kaneohe Ranch Company LLC

Servco Foundation

C. Dudley Pratt, Jr.

Sponsor

Accuity LLP

Mrs. Joan Bellinger

Cades Foundation

Cindy & David Cheever/

Kikiaola Land Company

Eric & Nancee Jenko Crispin

Leo A Daly

First Insurance Company of Hawaii, LTD

Fung Associates

General Growth Properties

Gentry Homes

Goodsill, Anderson, Quinn & Stifel

Honolulu Academy of Arts

The A.C. Kobayashi Family Foundation
Mason Architects, Inc.

Morgan Stanley & The Choy Kinney Wo Group

Native Hawaiian Hospitality Association

Outrigger Enterprises Group

PBR Hawai'i

Punahou School

The Schuler Family Foundation

Spencer Architects

Topa Management Company

Donations

Alii Drywall

Armstrong Builders, Ltd

Virginia Lowrey Brown & Zadoc W. Brown

William Y. Brown

Debra & Gregory Chun

Commercial Plumbing, Inc.

Communications Pacific

Jane Dimmitt

Carol & Lloyd Fujie

Hawaiian Dredging & Construction Company, Inc.

Hawaiiiana Development Group LLC

David & Nery Heenan

Louise Ing & Michael Sitch

Kevin's Electric, Inc.

Kokea Construction & Consultants, Inc.

Jeffrey & Carol Lum

Samuel & Camille Lyons

Marathon Group

Kapiolani Marignoli

John & Mary Philpotts McGrath

Matthew & Malia Megorden

Alfred & Ruth Ono

Pacific Marine & Supply Company

William & Peggy Paty, Jr.

Ron's Flooring

T. Taketa Sheet Metal, Inc.

Title Guaranty Escrow Services

W.E. Painting

Waihona Builders, LTD

General Fred Weyand, U.S.A. (Ret.)

PUBLIC POLICY AND LEGISLATIVE AFFAIRS

LEGISLATURE ESTABLISHED HERITAGE CAUCUS

At the beginning of the 2006 legislative session, state lawmakers created a bipartisan, bicameral heritage caucus that focuses on protecting local architecture and promoting the traditional art forms of Hawai'i's many cultural groups. The Heritage Caucus was jointly chaired by Representative Cindy Evans and Representative Corinne Ching. Members of the 2006 Heritage Caucus included Representatives Lyla Berg, Mele Carroll, Lynn Finnegan, Josh Green, Chris Halford, Bev Harbin, Barbara C. Marumoto, Colleen Rose Meyer, Mark S. Moses, Kymberly Pine, Bud Stonebraker, Cynthia Thielen and Clift Tsuji; joined by Senators Lorraine Inouye, Russell Kokubun and Suzanne Chun-Oakland.

Historic Hawai'i Foundation was a partner in the Heritage Caucus and offered testimony in support of several bills that supported preservation activities. The bills included a preservation tax credit for the rehabilitation of historic structures; an appropriation for façade renovations of historic structures on Hotel Street in Chinatown; designating civil and administrative penalties for knowingly violating the conditions of an approved preservation mitigation plan; and a resolution supporting the preservation of Japanese Shrines and Temples.

HHF received a Senate commendation for its work in perpetuating Hawai'i's historic legacy. The resolution was sponsored by Senator Suzanne Chun-Oakland.

PRESERVATION ADVOCACY

CHINATOWN RECEIVES "PRESERVE AMERICA" DESIGNATION

HHF worked with the Honolulu Culture and Arts District to promote Hawai'i's first designation of a Preserve America area. City and County of Honolulu Mayor Mufi Hannemann and John Nau III, Chairman of the White House Advisory Council on Historic Preservation, announced on May 23 that Chinatown has been designated as a "Preserve America Community Neighborhood." The announcement came at a reception co-hosted by the Historic Hawai'i Foundation at the 'Iolani Palace Barracks to honor Mr. Nau's visit to Honolulu.

Mr. Nau and ACHP staff visited Honolulu and Waimea on the Big Island in late May to discuss historic preservation and burials issues with Native Hawaiians.

PRESERVATION ROUNDTABLE

On April 4, Historic Hawai'i Foundation and the National Trust for Historic Preservation (NTHP) convened a Roundtable of preservation partners to discuss current issues and trends related to preservation in Hawai'i.

The meeting goals were to network and build coalitions among members of the preservation community; define the preservation trends and issues we face in Hawai'i; determine ways that the preservation community can work together; and discuss how National Trust for Historic Preservation can support preservation efforts in Hawai'i. Major issues identified by the group included privatization of military housing, cultural and heritage tourism,

emerging interest in cultural landscape preservation, land use and new development, securing sustainability and quality growth; and public policy and regulatory issues.

The Roundtable was attended by some 30 people representing preservation professionals, advocates, elected and appointed officials, advisors and interested lay persons from the islands of O'ahu, Kaua'i and Hawai'i. It was hosted by the Daughters of Hawai'i at Queen Emma Summer Palace.

MOST ENDANGERED HISTORIC SITES IN HAWAII

Historic Hawai'i Foundation and the State Historic Preservation Division jointly released a list of the nine most endangered historic sites in Hawai'i in the November issue of *Honolulu* magazine.

While inclusion on the list does not automatically protect or preserve the sites, it is hoped that the list will raise public awareness, and inspire the community to take action.

The list includes the Walker Estate in Nu'uuanu, the Queen Theater in Kaimuki, the plantation manager's mansion in 'Ewa Villages, and San-ju Pagoda on O'ahu; Koke'e State Park and Gulick-Rowell House on Kaua'i; Pu'unene Congregational Church on Maui; the Mapulehu Glass House on Moloka'i; and Lana'i City on the island of Lana'i.

'Olelo featured the sites in a discussion between panelists HHF Executive Director Kiersten Faulkner, Melanie Chinen, SHPD Administrator, and Michael Keany, who authored the piece for *Honolulu* magazine. The show aired on 'Olelo Channel 53 in late November and was moderated by *Honolulu* magazine's editor A. Kam Napier.



PHOTO COURTESY OF ALICE SALBOSA

The Walker Estate in Nu'uuanu is listed among the nine most endangered historic sites in Hawai'i by *Honolulu* magazine.

INDIVIDUAL PROJECTS AND SITE-SPECIFIC ACTIONS

The HHF Board of Trustees adopted a preservation policy that calls for the protection of the historic camp lots in Koke'e and Waimea Canyon State Parks on Kaua'i. Historic Hawai'i Foundation advocates for commitments to avoid and mitigate the potential effects on the historic recreational residences. HHF's conditions are intended to preserve the historic integrity and rustic character of these residences and of the three camp lots.

In September and October, HHF worked to prevent the demolition of the historic mansion and gardens of the nationally-recognized Walker Estate in Nu'uuanu. The estate was proposed to be removed under a plan filed with the City and County of Honolulu. State Historic Preservation Division declined to approve the application for a demolition permit that was referred by the City and County of Honolulu planning department.

HHF worked with the Kapiolani Park Preservation Society to urge the City and County of Honolulu to restore and reuse the Alfred Preiss-designed entry to the Honolulu zoo as it develops a new master plan and redesigns the entry and exit. An early version of the zoo plan called for the abandonment and eventual demolition of the structure, which is located in the Kapiolani Park National Historic District.

PUBLIC EDUCATION

EXPERTS AT THE PALACE

The 19th annual Experts at the Palace lecture series was held at the Old Archives Building on 'Iolani Palace grounds in January and February 2006. The free weekly lecture series was co-sponsored by the University of Hawai'i's Historic Preservation program and Friends of 'Iolani Palace. The lecture series focused on planning, preservation and interpretation efforts in Honolulu's Capital Cultural District, which is being studied as a possible National Heritage Area. Guest lecturers were Lorraine Lunow-Luke, Coordinator of the HCCD; Ed Korybski, Executive Director of the Honolulu Culture and Arts District; Sarah Richards, President of Hawaii Theatre; David De La Torre, Hawai'i State Art Museum, and Toni Han Palermo, Ali'iolani Hale.

HISTORIC PRESERVATION AWARENESS AT THE STATE CAPITOL

Observation of May as Historic Preservation Month began with an official proclamation from Governor Linda Lingle declaring the first Monday in May to be Historic Preservation Day. Heritage Caucus founder and co-chair Representative Corinne Ching organized three days of preservation awareness activities on May 1, 2 and 3, including a preservation fair of exhibits, walking tours of the Capital District and a speaker's series. The celebration wrapped up with a reception at Washington Place. HHF participated in the event with exhibits and presentations at the lecture series.

FORUM FOR INNOVATIVE STRATEGIES IN A HISTORIC DISTRICT

On June 26-27, HHF joined Honolulu Culture and Arts District, Nu'uuanu Merchants Association and the Hawai'i Community Foundation in sponsoring "Building a Better Neighborhood: A Forum on Innovative Strategies in a Historic District."

The purpose of the Forum was to explore innovative ways nonprofit organizations, area

businesses, landowners and city/state government can work together to implement economic revitalization strategies and assist neighborhoods in transition. The Forum addressed both broad urban issues as well as specific strategies through case study of the Downtown Denver Partnership. The first day gave participants an overview of urban planning issues that have been addressed in downtown Denver. The second day addressed the specific “nuts and bolts” of a cooperative strategy/model amongst non-profits and other area stakeholders in Downtown Denver used to successfully revitalize the area. This information-gathering forum provided an opportunity to learn about best practices and mistakes to avoid from other places as we tailor an approach specifically for Honolulu. Specific topics included Denver’s plan to end homelessness, innovative funding for culture and arts, transit solutions, and comprehensive planning for historic downtowns.

SHPD PRESERVATION SYMPOSIUM

The State Historic Preservation Division held a Symposium August 2 that featured nationally-known expert Donovan Rypkema. During his keynote address, Mr. Rypkema discussed the economic benefits associated with preservation, from creating jobs and income to stimulating revitalization of older commercial areas and returning properties to the tax roles. HHF Executive Director Kiersten Faulkner moderated a panel on tax incentives for preservation that included Mr. Rypkema, as well as state and county representatives.

TECHNICAL ASSISTANCE

DEPARTMENT OF DEFENSE PROGRAMMATIC AGREEMENTS

HHF completed consultation on proposed impacts to historic houses on Air Force, Navy and Marine facilities on O’ahu through Programmatic Agreements (PAs) with these branches of the service.

HHF fully participated in the discussions and negotiations for the PAs and signed them as a concurring party, indicating its support for the processes they outline. Significant



HHF completed consultation on Military Housing Programmatic Agreements (Marine Barracks, shown here).

agreements in the PAs include retention of all historic housing located on Ford Island, in the Pearl Harbor National Historic Landmark, Hale Ali'i, Marine Barracks, the Hickam National Historic Landmark and Heleloa-Hilltop at Marine Corps Base Kaneohe. Representative structures will be retained at Manana, Makalapa and Maloelap, although the majority of these neighborhoods will be cleared to create new building sites.

CONSULTATION UNDER SECTION 106 OF NHPA

Historic Hawai'i Foundation participated in dozens of formal consultation actions under Section 106 of the National Historic Preservation Act. Section 106 requires that any federal undertaking that impacts historic resources be reviewed and discussed with the State Historic Preservation Division and community groups. As the only statewide preservation organization, HHF has standing to consult and comment on these undertakings. In 2006, HHF participated in consultations with all branches of the U.S. military, the National Park Service, Federal Aviation Administration, National Oceanic and Atmospheric Administration, as well as Hawai'i State Departments of Land and Natural Resources, Transportation and National Guard.

SHPD PROCEDURE REVISIONS WORKING GROUP

The state Department of Land and Natural Resources designated 2006 as the Year of Historic Preservation, highlighting the activities of the State Historic Preservation Division (SHPD). Division administrator Melanie Chinen convened a working group to review the division's procedures and make recommendations for improving the preservation review process for both architectural and archeological historic resources. HHF participated in the working group to help develop standardized processes to make the review procedures more effective and efficient.

WESTERN REGIONAL ADVISORS AND PARTNERS MEETING ON KAUAI

The National Trust for Historic Preservation held its annual Spring Meeting for its Advisors and Partners in Hanalei in early April. In addition to NTHP Trustee Mary Cooke, NTHP Advisor Lani Ma'a Lapilio and HHF Executive Director Kiersten Faulkner representing Hawai'i, the meeting was also attended by Advisors and Partners from California, Arizona, Oregon, Washington and Rhode Island. The sessions included visits to Limahuli Gardens, the Waipa Foundation, Waioli Mission House Museum, the Haraguchi Rice Mill, and the Hanalei National Wildlife Refuge. The meetings at Hanalei Community Center included extensive discussions of cultural landscapes and preservation, as well as a presentation by HHF President Peter Apo on "The Impact of the Global Economy on Heritage and Culturalism. Through Hawaiian Eyes: Is Your Town Next?" The gathering also included meetings with local preservationists, including Pat Griffin and Mary Requilman of the Kaua'i Historic Society, Melanie Chinen of the State Historic Preservation Division, and State Representatives Corinne Ching and Hermina Morita.

ARCHIVE PRESERVATION PROJECT

HHF received a grant from Christopher Haig in early 2006 to protect and digitize its collection of archival photographs, slides, videos, books, documents and other materials. Consultant Scott Cheever was hired to create a system for preservation and filing of source documents simultaneously with the first phase of digitizing the collection and making it

available for primary research and use. The project included establishing a classification and filing system for the collection; digitizing the items; storing the originals with preservation-appropriate methods to prevent deterioration; labeling the files with information about subject identification, dates, photographer or author and other relevant information; and facilitating use of the collection for research and other uses.

Although the collection is not fully digitized, there were several applications of the photographs in 2006:

- HHF created a traveling exhibit that highlights the importance of historic preservation in Hawai'i. The panels featured photographs from the collection.
- HHF created a promotional film that included still photography from the collection. HHF is publishing a book about Hawai'i's Historic Corridors (release date in May 2007) that includes numerous photographs from the collection. The book describes historic corridors on each of the major Islands and is greatly enhanced by the historic photographs from the archives.
- A team of researchers from University of Hawai'i at Mānoa's American Studies Department used the collection to show a pictorial history of Waikiki. Their research was presented at a public forum in the Waikiki Aquarium in October and will also be the basis of a new book.
- Students from the University of Hawai'i at Mānoa's Future Studies Department used the collection to develop scenarios of the future of Chinatown for use in an urban planning exercise to help participants identify key decisions and values.



The Wo Fat Building in the heart of Chinatown exemplifies the period of architecture that led to its national recognition as a "Preserve America Community Neighborhood."



PHOTOS COURTESY OF BOYD BOND

Kalahikiola Church, located in North Kohala, suffered extensive damage from the October 2006 earthquake. The church was built in 1855 by Rev. Elias Bond.



RESPONSE TO DAMAGE FROM PU'UANAHULU EARTHQUAKE

In October, Historic Hawai'i Foundation joined the State Historic Preservation Division and National Park Service in assessing damage to historic buildings and archeological sites caused by the Pu'uana'hulu Earthquake in West Hawai'i.

Historic Hawai'i Foundation volunteers joined preservation response teams to assess damage to historic structures in west Hawai'i. The teams of preservation professionals inspected sites on the State and National Registers of Historic Places that reported damage. The first assessment teams focused on publicly-owned buildings, those on the state and national registers of historic places, and National Historic Landmark structures that reported damage. Non-registered buildings older than 50 years were also evaluated at the request of the property owners.

The goal of the initial assessment teams was to work with property owners to document the impacts and provide guidance on next steps to safeguard what is left and restore what was lost.

HHF PRESERVATION GRANT AWARDED TO WASHINGTON PLACE

Governor Linda Lingle and Mary Philpotts McGrath, on behalf of the Washington Place Foundation, accepted a \$10,000 grant for the preservation, restoration and stewardship of historic Washington Place at a presentation ceremony on February 22. The grant from Historic Hawai'i Foundation to the Washington Place Foundation recognizes the importance of Washington Place in Hawaiian history.

Historic Hawai'i Foundation honored Washington Place as the "Kama'āina of the Year" in December 2005 in recognition of the significant contributions made to the ongoing preservation of the historic house and thereby, Hawai'i's special historic heritage. The award was received by former First Ladies Nancy Quinn, Jean Ariyoshi, Lynn Waihe'e, Vicky Cayetano; along with Vivian Aiona (wife of Lt. Governor James R. "Duke" Aiona, Jr.) on behalf of Governor Linda Lingle; and Mary Philpotts McGrath, Washington Place Foundation president.



David Cheever presents Historic Hawai'i Foundation's \$10,000 grant to Mary Philpotts McGrath and Governor Linda Lingle.

SCOTT CHEEVER PHOTO

HISTORIC PRESERVES OF HAWAII FUND

Historic Hawai'i Foundation awarded a \$1500 grant from the Historic Preserves of Hawai'i Fund for use in restoring and repairing exterior walls that have been damaged at the historic Robert M. Purvis residence in Nu'uano. The project repaired water and wood damage and restored exterior finishes in keeping with the original design intent of this residence.

The preservation grant program is used for rehabilitation of historic residential or commercial buildings. Through a grant from the Hawai'i Community Foundation's Historic Preserves of Hawai'i Fund, HHF is able to distribute grants to homeowners or non-profit organizations for restoration or rehabilitation work for stabilization, windows and entryways or exterior finishes.

PRESERVATION SERVICES GRANTS

The National Trust for Historic Preservation, through the Hawai'i Preservation Services Fund, awarded \$5,000 to the Kona Historical Society in Captain Cook. The grant will partly fund the hiring of preservation architect/general contractor Thomas Quinlan to restore the 1875 Greenwell Store, which is on property adjacent to the Farm and listed on the State and National Registers of Historic Places. Built of local volcanic stone, the Greenwell Store is one of the few remaining stone buildings of that period in the state of Hawai'i. Rescued from demolition in 1970s, thanks to the hard work of the Kona Historical Society, the Greenwell Store is now an integral part of the Kona Heritage Ranch and Store Living history museum. HHF serves on the grant review committee for the Hawai'i Preservation Services Fund.

OPERATIONS

STRATEGIC PLANNING

In late 2006, the Board of Trustees began strategic planning for the next five years. The strategic plan will include a statement of Historic Hawai'i Foundation's preservation goals, guiding principles and strategic actions. It will be completed and released in 2007.

ARGONAUTA LEGAL DISPUTE

Historic Hawai'i Foundation is a co-defendant with National Park Service in Greg Marshall, et al. v. National Park Service et al. In December 2004, a former officer and director of Historic Hawai'i Foundation filed a lawsuit against the Foundation and the National Park Service seeking special, general and punitive damages to be shown at trial for alleged breach of contract related to a project to remove, relocate and reconstruct the Charles and Anne Morrow Lindberg home in Maui, referred to as the Argonauta Project. HHF disputes all liability and no judgments have been entered. HHF has a counterclaim against Mr. Marshall seeking damages. The case is scheduled for trial during the summer of 2007. In discussing what this means for the long-term future of HHF, the board has taken the position of vigorously defending the organization and allowing the legal process to run its course.

IN-KIND CONTRIBUTIONS

HHF thankfully acknowledges the gifts of in-kind goods and services from businesses and organizations. In 2006, these included:

Office space: Castle & Cooke

Meeting venues: Bank of Hawaii, Bishop Museum, Estate of Samuel Mills Damon, Group 70 International, Office of Hawaiian Affairs, Persis Corporation, University of Phoenix, YWCA of O'ahu, Queen Emma Summer Palace

Parking: Standard Parking

Video Production: Bob Bates/Anagram Pictures and Tim Anderson

Legal Services: Goodsill Anderson Quinn & Stifel

Preservation Consulting Services: Fung Associates

Photography: Scott Cheever, W. Labby and Jon Radke

Information Technology Support: Roland Schorr Tower

Software: Gifts in Kind.org

VOLUNTEERS

Membership Secretary: Barbara Makua

Special Event Assistance: Mo Radke, Ralph Schmidt, Sam Spencer, Kai White

Big Island Office Manager: Tom Quinlan/Historic Properties Services

Archives Preservation Intern: Justin Schultz

GRANTS

In 2006, Historic Hawai'i Foundation received several grants in support of its programs:

Archive Preservation and Digitization: Christopher J. Damon Haig

Heritage Corridors Publication: Strong Foundation

Telephone System Replacement: Atherton Family Foundation

Preservation Projects: Historic Preserves of Hawai'i/Hawai'i Community Foundation

Endowment Contribution: Bretzlaff Foundation



Repairs to the historic Purvis residence in Nu'uuanu were accomplished with a Historic Preserves of Hawai'i grant.

STATEMENT OF FINANCIAL POSITION

As of December 31, 2006

CURRENT ASSETS

Cash (including interest-bearing accounts)	\$187,369
Investment – unrestricted	97,442
Pledges receivable – net	33,100
Inventory of books	2,132
Prepaid expenses	<u>29,092</u>
Total current assets	<u>349,132</u>

NONCURRENT ASSETS

Investment – restricted	220,000
Office furniture and equipment – net	12,932
Security deposit	<u>75</u>
Total noncurrent assets	<u>233,007</u>

TOTAL ASSETS	<u>\$582,142</u>
---------------------------	-------------------------

LIABILITIES AND NET ASSETS

CURRENT LIABILITIES

Accounts payable	\$ 39,984
Accrued liabilities	7,424
Grants payable	<u>11,500</u>
Total current liabilities	<u>58,908</u>

NET ASSETS

Unrestricted	248,843
Temporarily restricted	38,896
Permanently restricted	<u>235,495</u>
Total net assets	<u>523,234</u>

TOTAL LIABILITIES AND NET ASSETS	<u>\$582,142</u>
---	-------------------------

STATEMENT OF ACTIVITIES

For the Year Ended December 31, 2006

CHANGES IN UNRESTRICTED NET ASSETS

Revenue and support	
Contributions – including in-kind contributions \$32,705 and contributions released from restrictions of \$37,521	\$148,027
Membership	121,091
Special event (net of direct expenses)	68,819
Interest and investment income	28,798
Fees for preservation programs	5,299
Sales and contributions for books – net of cost of books sold of \$3,077	<u>2,761</u>
Total revenue and support	<u>374,795</u>
Expenses	
Program services	298,345
Management and general	33,205
Fundraising	<u>21,130</u>
Total expenses	<u>352,680</u>
Revenue and support less expenses	22,115
Costs of Argonauta Project litigation	<u>(105,522)</u>
Decrease in unrestricted net assets	<u>(83,407)</u>

CHANGES IN TEMPORARILY RESTRICTED NET ASSETS

Temporarily restricted contributions	62,932
Net assets released from temporary restrictions	<u>(37,521)</u>
Increase in temporarily restricted net assets	<u>25,411</u>

CHANGES IN PERMANENTLY RESTRICTED NET ASSETS

Permanently restricted contributions	<u>20,000</u>
Increase in permanently restricted net assets	<u>20,000</u>

DECREASE IN NET ASSETS	(37,996)
-------------------------------------	-----------------

NET ASSETS – Beginning of year	<u>561,230</u>
---	-----------------------

NET ASSETS – End of year	<u>\$523,234</u>
---------------------------------------	-------------------------

STATEMENT OF FUNCTIONAL EXPENSES

For the Year Ended December 31, 2006

	Program Services	Management and General	Fundraising	Totals
Personnel and related costs	\$129,999	\$17,439	\$11,097	\$158,535
Professional fees	40,179	5,390	3,430	48,999
Preservation program costs	47,818	-	-	47,818
Office and administrative	35,141	4,714	3,000	42,855
Lease rent	24,207	3,247	2,067	29,521
Meetings and travel	8,168	1,096	697	9,961
Grants to others	3,000	-	-	3,000
Other expenses	<u>9,833</u>	<u>1,319</u>	<u>839</u>	<u>11,991</u>
Total expenses	<u>\$298,345</u>	<u>\$33,205</u>	<u>\$21,130</u>	<u>\$352,680</u>

STATEMENT OF CASH FLOWS

For the Year Ended December 31, 2006

CASH FLOWS FROM OPERATING ACTIVITIES

Decrease in net assets	\$ (37,996)
Adjustments to reconcile decrease in net assets to net cash used by operating activities:	
Unrealized losses from holding investments	2,001
Realized gains from sales of investments	(19,556)
Depreciation	3,417
(Increase) decrease in:	
Pledges receivable	(14,100)
Inventory of books	3,171
Prepaid expenses	(25,426)
Increase (decrease) in:	
Accounts payable	20,018
Accrued liabilities	3,460
Grants payable	(14,065)
Net cash used by operating activities	<u>(79,076)</u>

CASH FLOWS FROM INVESTING ACTIVITIES

Sales of investments	180,451
Purchases of investments	(47,408)
Purchases of office furniture and equipment	(11,970)
Net cash provided by investing activities	<u>121,073</u>

NET INCREASE IN CASH 41,997

CASH - Beginning of year 145,372

CASH - End of year \$187,369

DETAIL OF NET ASSETS

At December 31, 2006 net assets consisted of the following:

Unrestricted net assets	\$248,843
Net assets temporarily restricted for:	
Heritage Corridors	\$24,076
SKEA restoration	10,000
Historic Preserves of Hawaii	4,446
Other projects	374
Total temporarily restricted net assets	<u>\$38,896</u>
Net assets permanently restricted for:	
Bretzlaff Foundation Endowment	\$220,000
Historic Hawaii Foundation Endowment	<u>15,495</u>
Total permanently restricted net assets	<u>\$235,495</u>

Net assets are temporarily restricted for the Historic Preserves of Hawaii (for projects which are designed to protect, preserve, and interpret important historic sites and to perpetuate cultural practices within these preserves). The Foundation received a grant for \$40,000 for the Heritage Corridors, a project to recognize significant historic corridors in the form of a publication. Net assets are permanently restricted for the Bretzlaff Foundation and Historic Hawaii Foundation Endowments (both are for historic preservation activities in Hawaii).

The complete financial statements, audited and prepared for Historic Hawai'i Foundation by Detor & Williams, CPAs may be obtained by calling the Foundation office at (808)523-2900.



Board of Trustees 2006

Peter Apo
 Scott Bradley
 William Y. Brown
 David Cheever
 Gregory Chun
 Eric G. Crispin
 Linda Faye Collins
 Stanton Enomoto
 Carol Fukunaga
 Frank Haas
 Peter S. Ho
 Lea Ok Soon Hong
 Robert Iopa
 Timothy E. Johns
 Cheryl Ka'uhane Lupenui
 Jeffrey M.C. Lum
 Katherine MacNeil
 Tonia S. Moy
 Michael O'Malley
 Lorraine Minatoishi Palumbo
 Curt Nakamura
 Ted Rachlin
 Garrett Saikley
 Ray Soon
 Willard "Buzz" Stluka
 (resigned July 2006)
 Michael White
 (appointed November 2006)
 Jan Yokota

Advisor

Lani Ma'a Lapilio

Executive Committee

Peter Apo, *President*
 Katherine MacNeil, *First Vice President*
 Frank Haas, *Second Vice President*
 David Cheever, *Secretary*
 Ted Rachlin, *Treasurer*
 Timothy E. Johns, *At Large*
 Tonia S. Moy, *At Large*

Nominating Committee

Ray Soon, *Chair*
 Eric G. Crispin
 Pat Griffin
 Frank Haas
 Peter S. Ho
 Jeffrey Lum
 Katie MacNeil, *ex officio*

Finance & Audit Committee

Peter S. Ho, *Chair*
 Jeffrey Lum
 Cheryl Ka'uhane Lupenui
 Michael O'Malley
 Ted Rachlin

Strategic Planning Committee

Stanton Enomoto, *Chair*
 Peter Apo
 Katie MacNeil
 Tonia S. Moy
 Ray Soon

Preservation Honor Awards Committee 2006

Frank Haines, *FAIA*
 Elizabeth Labby
 Tonia S. Moy
 Kam Napier
 Jeff Tripp

Communications Committee

David Cheever, *Co-Chair*
 Frank Haas, *Co-Chair*
 Nancy Bannick, *Newsletter Editor*

Winter Benefit Committee 2006

Peter S. Ho, *Co-Chair*
 Timothy E. Johns, *Co-Chair*
 Scott Bradley
 Eric Crispin
 Michael Fisch
 Katie MacNeil
 Matthew Megorden
 Michael O'Malley
 Michael Pfeffer
 Jan Yokota

Staff

Kiersten Faulkner,
Executive Director
 Jill Byus Schorr,
*Membership and
 Development Manager*
 Danielle Wood,
*Office Manager and
 Executive Assistant*

* Indicates Charter Members

HERITAGE LEADERS

A. Walther Trust
Christopher Haig
Mr. & Mrs. Samuel A. Cooke

HERITAGE PATRONS

Bank of Hawaii
Lehua & Conrad G. Conrad, III
Halligan Charitable Fund
Elia & Betty Long
Louis Vuitton Hawaii, Inc.
Easton & Nedra Manson
The Shidler College of Business
Thurston & Sharon Twigg-Smith
Veronica Worth

HERITAGE BENEFACTORS

C. Scott & Lisa Bradley
Carlsmith Ball LLP
Vicky & Benajamin Cayetano
First Hawaiian Bank
Hawaiian Electric Company, Inc.
Timothy & Robin Johns
Kaneohe Ranch Company LLC
Ko Olina Resort/The Resort Group
The MacNaughton Group
Kapiolani Marignoli
Mike & Trish O'Neill
Outrigger Enterprises Group
James Shingle
WCIT Architecture
Rianna Williams
Robert & Betty Wo

HERITAGE ASSOCIATES

Accuity, LLP
Alexander & Baldwin
American Land Company
Armstrong Builders, Ltd
Nancy Bannick*
Joan Bellinger*
Cades Foundation
Castiglione A Casauria Foundation
Castle & Cooke Hawaii
Central Pacific Bank
David & Cindy Cheever
Choi International
Debra & Gregory Chun, Ph.D.
Coldwell Banker Pacific Properties
Communications Pacific
Mr. & Mrs. Samuel A. Cooke*
Eric & Nancee Crispin
Deloitte & Touche LLP
Peter Drewliner*
Mr. & Mrs. Dean A Eyre, Jr.*
First Insurance Co. of Hawaii
Michael & Nancy Fisch
Fung Associates
Gannett Foundation
General Growth Properties
(Ala Moana/The Ward Centers)

Gentry Homes, Ltd.
Goodsill Anderson Quinn & Stifel
Grace Pacific Corporation
Group 70 International
Haleakala Ranch
Hawaiian Cement
Hawaiian Dredging & Construction Company, Inc.
Haworth Design
Ron & Sanne Higgins
Peter & Michele Ho
Honolulu Advertiser
Island Insurance
Kikiala Land Co., Ltd.
Kokea Construction & Consultants, Inc.
Michael & Spencer Leineweber*
Leo A Daly
Stephen & Nadine Little
Mary & Benjamin Marx*
Mason Architects, Inc.
Matthew & Malia Megorden
Morgan Stanley
John Nau, III
Pacific Marine & Supply Company
PBR Hawaii
Ralph & Paki Portmore
C. Dudley Pratt, Jr.*
Eileen Price
Projects Enterprises, Inc.
Punahou School
Kenneth & Shaugh Robbins
Alice Robinson
Larry Rodriguez
Servco Foundation
Douglas Shave, M.D. & Lansing S. Moran
Lloyd Soehren*
Joanna Sullivan
The A.C. Kobayashi Family Foundation, Inc.
The Schuler Family Foundation
Barbara Tilley
Title Guaranty Escrow Services
Topa Financial Center
Gulab & Indru Watumull*
Xerox Corporation
Pundy & Shirley Yokouchi

PRESERVATION SPONSORS

AC Kobayashi Family Foundation
Alii Drywall
Alan Beall*
Bear Creek Lumber, Inc.
William Brown
Ann Catts*
Commercial Plumbing, Inc.
Edward Conklin
Edith Cooke*
Carol Fujie
Hawaii Development Group LLC
Ann & Oliver Hutaff, Jr.
Melvin Kaneshige & Nancy Pace
Kevin's Electric, Inc.
Mary King
Sue and Al Landon
Marathon Group



Monarch Insurance Services
 William & Peggy Paty, Jr.*
 Ted Rachlin
 Ron's Flooring
 Harry Saunders
 Allen & Tita Stack*
 T. Taketa Sheet Metal, Inc.
 W.E. Painting
 Waihona Builders, LTD.
 General Fred Weyand, U.S.A.
 (Ret.)*
 Barbara & Allen C. Wilcox, Jr.
 Scott Wilson & Christine Yano

PRESERVATION SUPPORTERS

Agnes Conrad*
 Tom Fee
 Robert & Alice Guild
 Melvin Hirose
 Glen Kaneshige
 Thomas King, Jr.*
 Kurisu & Fergus
 Bob & Evanita Midkiff*
 Brian Moore
 Bradley & Polly Oliver
 Jean Rolles
 Oswald & Kuulei Stender

PRESERVATION PARTNERS

Grace Ackerman*
 Peter Apo
 George Ariyoshi*
 Patricia A. Avery
 John Baldwin
 Herb Basik
 Clint & Mimi Basler
 J. Gordon Beaton
 Marjorie Bronster
 Virginia Lowrey Brown &
 Zador W.*
 H. William Burgess &
 Sandra Puanani
 Pamela Burns
 Jill Byus
 Margaret Cameron
 George Casen
 Bill Chapman
 Murray Chapman
 John Charlot
 Chung Kun Ai Foundation
 Jean Clarey*
 Richard & Terry Clifton
 Mazeppa Costa*
 Mr. Richard H. Cox
 Duncan & Joan Dempster
 Wales & JoAnne Dixon
 Mary Jane Dobson
 E Noa Corporation
 Stanton & Kristen Enomoto
 Bruce Erickson & Jackie Mahi
 Jim & Joan Fleming

James Gray*
 Ralph Gray
 Francis & Margaret Haines*
 Haleiwa Main Street
 Jenny Hartley
 Susan Hatfield
 Stephen Haus
 Carl Hebenstreit
 David & Nery Heenan
 Irmgard Hormann*
 David Hulihee
 Robert Hunter
 Louise Ing & Michael Sitch
 Marjorie Irwin James*
 Katherine Keys
 Kikiaola Construction
 John Knox & Mary Alice Evans
 Lahaina Restoration Foundation
 Lani Ma Lapilio
 Scott Larson
 Peter Lewis & Mary Lou*
 Jeffrey & Carol Lum
 Samuel & Camille Lyons*
 Katherine MacNeil &
 Gregory Niemetz
 John & Anne Mapes
 Glenn Mason*
 John & Mary Philpotts McGrath
 Don & Marion Murphy
 Janice Nam
 John & Lois Nash
 William Olson
 Alfred & Ruth Ono
 Lorraine & Charlie Palumbo
 James Penoff*
 Alan and Martha Peterson
 Diane Plotts*
 William David & Carol Pratt
 Chris Resich
 Doris Rewick
 Ryon Rickard
 Jean Rigler*
 Richard Romer*
 Rod Santos
 Maureen Schaeffer
 Matthew Shim, USAF
 Barbara Smith
 Edwin Sorenson
 Robert Sparks
 Elizabeth Stack
 Helen Ladd Thompson
 Genevieve Trout*
 Jerome & Alice Tucker*
 William Warren
 Carlos Weber
 John Whalen
 Robert Wheeler, III & Marcy E.
 Fleming
 Wendy Wichman
 Elizabeth Wick
 Gaylord & Carol Wilcox*
 Thomas Wilson
 Martha Wood

Michael & Joanne Wood
 Ann K Yoklavich &
 Joseph Rothstein

FAMILY

Neil Abercrombie &
 Nancie Caraway*
 Charles & Betty-Lee Adcock*
 Joe & Deepa Alban
 Earlene Albano
 Jane & Marciano Aquino
 Frank Bednar
 Mary Louise Blackburn
 Sarah Botsai
 The Bunten Family
 Elizabeth Bushnell*
 Paul Cassidy
 Andrew & Linette Char
 Philip & Gerry Ching*
 Corinne Chun & Kyle Fujimoto
 Mrs. Allyn Cole, Jr.*
 Clifford & Louisa Cooper
 Jean Cornuelle*
 Mr. & Mrs. R. Dougal Crowe*
 Joseph Dacey
 Peter Dease
 Frank & Elaine DiChiara
 Jane Dimmitt*
 Dolores Dos Santos
 Courtney Doyle
 Mike & Margie Durant
 James Ewing
 Phyllis Fox*
 Darlene Frybarger
 Donald & Laura Goo*
 Wayne Goo
 Suzanna Gratz
 Frank & Susan Haas
 Gaylien Hall
 Catherine Harris
 Donald & Shirley Hasenyager*
 Mark & Diane Hastert
 Masuye Hew
 A. Miyo Ichijo
 Goro Inaba*
 Frederick Irwin
 Kahala Resort
 Chester Kaitoku
 Charles & Beverly Keever
 Cathy Kelihoomalu
 Bill Koll
 Geoffrey Kragen
 Larry Langley
 Lorna Larsen-Jeyte
 Reginald W. T. Lee
 Ranita LeGrande
 Michael & Helen Leidemann
 Richard & Meredith Libbey*
 Barbara Long
 Robert Look
 Fred & Alice Lunt
 Mr. & Mrs. James F Lynch, Jr.

Barbara Marumoto &
Richard Coons*
Betty Matsumura
Abigail T. Maynard & Conor Finlay
William McCord
James McCutcheon*
Bruce McEwan*
Don & May Moore
Edward Morgan
Nancy Mower
Valerie Nishida
Matsuyo Nose*
Edwin & Jean Okada*
Ester Smith O'Toole
Helen Otschi
Richard Pang
Jacqueline Parnell*
Alexander & Frances Pickens
David Pratt
Charles Raven
Delores & Norris Sandvold
Jennifer Saville
Kenneth & Adrienne Sexton
David & Barbara Shideler
Robert Silverstein
Carl & Colleen Sorem
Arthur Sprague
Ihilani Staton
Stanley & Joan Stong
E. Grant Story &
Allyn R. Thompson
Christopher James Swoish
Angeline Tamekazu
Ann Townsend
Floraine Van Orden
Betty Vitousek
Stratford Whiting*
Shannon Wilson
Clayton & Ginger Winger
Lori K. Yamada & William Young
Bill Guy & Louli Yardley
Mark Yeackel & Barbara Schneider
William & Georgina Yuen

INDIVIDUALS

Marcia Allison
Meryl Andersen*
Susan Anderson, RN
Lowell Angell
Diane & Dale Barrett
Lisa Barton
The Baumanns
Virginia Baz
Carolyn Berry
William Boland*
Jane Boynton
W. Frank Brandt
Balbi Brooks
James & Madeleine Budde
Larry Burgess
Louis Bushnell
Thomas Cabrinha
Barbara Cameron

Gary Canner
Elaine Chang
Charles Reed Bishop
Learning Center
Corinne Ching & Stuart Lerner
Esther Chun
Cooke Library-Punahou School
David Cooper
Robert Crone
Mrs. Thomas Culbertson
Paul & Charlene Dahlquist
Joy Davidson
Edsung Foodservice Company
Virginia & Raymond Emory*
Ernie Endrina
Patricia Engelhard*
Marsha Erickson
Uson & Lani Ewart
Barbara Faye
Joel & Vasanti Fithian
Mary Jo Freshley*
Erminie Gartley
Shelley Germain
Theodore Gibson*
Jack & Janet Gillmar
Robert Gordon
Pat Griffin
Denise Griffith
Normand & Frances Hallonquist
E. Doanie Hare
Barbara Harger
Connie Hastert
Lani Hearn
Larry Helber
Janet Henderson
Miriam Hicks
Joe Ann Hinrichs
Arrin Holt
Jenny Howard
Liz Dreher Howard*
Debbie Ichishita
Hawaiian Telcom
Linden Joesting
Reverdy Johnson
Elissa Josephsohn
Donna Kalauokalani
Kamehameha Schools
Karen Kane
S. Maile Kane
Kauai Historical Society
Cheryl Kauhane & Boots Lupenui
Margie Kiessling
Millicent Y. H. Kim
Victoria Kim
Jennye Kohatsu
Kona Historical Society
Karen Kosasa
Jan Krane
Dawn Krause
Kathryn Ladoulis
Malia Lageman
Richanne Lam
Teresa Law
Linda LeGrande

Catherine Smith Lentz
Tom Loffman
H. Peter & Joan L'Orange
Ellen Luhrs
Patti Lupton*
Nancy Magraudy
Debra Malia
Richard & Judie Malmgren
Frank & Barbara Maloney
Michael Marks*
Kathy Martin-Yeager
Frances McClurkin
Wade McVay
Gilbert Mendelson
Midkiff Learning Center
Martha Monahan
Bob Mott
Sanford & Frances Murata
Momi Naughton
Martha Nelson
Margaret Nesbitt*
Diane Nielsen*
Katharine Norwood*
Mary Louise O'Brien
Michael Ogan
Justin & Ethel O'Neil
Charles Pearson
Janice Pechauer
Patty Pekar
Dorothy Chambers Phillips
Stephanie Ponciano
Leilani Pyle
Thomas Quinlan
Cynthia Quisenberry*
CMC Maurice Radke, USN (Ret.)
Robert Ramsay
Barbara Robeson
Peter Ross
Robert Saarnio
Marian Sandelin*
Janet (BJ) Short
John & Sigrid Southworth*
Robert Stanley
Steve Stark
Leo Stawiarski, Jr.
H. Howard Stephenson
Herta Stevens
Jacob Sur
Chieko Tachihata
Willard Thomas
George Tokumi
Albert & Laurita Turner
Colleen Uahinui
Coralie Vellis*
Fred Villa
Francine Wai
Linda J. H. Warriner
Darrell Welch, Jr.
Katherine Wery*
Suzanne Westerly
De Etta Wilson
Windward Community
College Library
Santiago Wood

Veronica Yamagata
Byrnes K. Yamashita
Laura Kealoha Yardley
Allan Yasue

SENIORS & STUDENTS

Lillian Adams *
Jane Albritton
Joan Ashford
Anna Derby Blackwell
Rochelle Blaisdell
William Bolman
Robert Bosley
June Bradley
Goldie Brangman
Paul Brennan
Mary Caywood
Helen Chapin
William Cleghorn
T.J. Davies
Tony & Barbara Del Piano *
Philip Deters
Fran Dieudonne
Elizabeth Dower
Marion Durant *
Barbara Earle *
Reginald Gage, II
Gail Gammie
Loriann Gordon
Norma Gunther
Rhoda E.A. Hackler *

Ted & Zellie Harders *
Catherine Harlan
Joan Harper
Jim & Pat Harwood
Hawaii State Library
Louise Hallsted Helmer
Orpha Herrick *
James Hind
Alan Holzman
Deborah Hoohuli
Ralph Hook *
Wayne Kehau Ingols
Lenore Johnson
Lesleigh Jones
Mary Judd
Ralph Kam
Winona Kamai
Stephen Kimbel
Masuo Kino
Katherine Lee
Brenda Lowrey
George Lowson
Barbara Makua
Cynthia Marnie
Milton Masing
Margaret McAleavey
Charles McClure
Martin McMorrow
L. Richard Melcher
Richard Meyer
Richard Morris

Lyle Nelson
John Nielsen
Joan Pedro
Virginia Pedro
Christian Peterson
Eleanor Pierce
Joan Pratt *
Carl Reber
Mary Deas Reynolds
Eleanor Richardson
Harriet Rotz
Ralph Schmidt
Barbara Seymour
John Silva, Jr.
Patt Spencer
Ronald & Andree Sprink
Marilyn Stassen-McLaughlin *
Ann Stegmaier *
Joseph Stoddard
Carol Takashima
David & Trudy Taylor
Barbara Thompson *
James Thropp, Jr.
Barbara Thurston
Helen Van Etten
Helen Troy Von Tempsky *
Norah Walker *
Dorothy Davis Webb
Kai White
Shozo Yoshizawa
George Yuen

*We have made every effort to ensure an accurate and
complete listing of our valued members and supporters.
If we have misspelled or omitted any name, please let us know
so that we can make corrections.*

Mahalo.



HISTORIC HAWAII FOUNDATION

680 Iwilei Road, Suite 690, Honolulu, HI 96817

Telephone (808) 523-2900 • Fax (808) 523-0800

Email: preservation@historichawaii.org

Website: www.historichawaii.org

Historic Hawai'i Foundation
680 Iwilei Road, Suite 690
Honolulu, Hawai'i 96817

Nonprofit
Organization
U.S. Postage
PAID
Honolulu, HI
Permit No. 1301



**HISTORIC
HAWAII
FOUNDATION**