

# 2004

ANNUAL REPORT



HISTORIC  
HAWAII  
FOUNDATION



PHOTO BY DENNIS ODA, STAR-BULLETIN

The Native pohinahina plant flourishes at Mau'umae Nature Park.

## It Takes A Village

Historic preservation involves more than planning and design and construction. People are the most important part any of historic preservation project.

That is why Historic Hawai'i Foundation is so proud to honor in this Annual Report a handful of the faithful volunteers from all walks of life who have made a difference in historic preservation in our state. These stalwart individuals have marshaled resources in their "village" and helped to keep Hawai'i Hawai'i.

Whether it was a restored park in Kaimukī, a coffee mill in Kona or a specific section of Hilo — to mention a few represented here — these non-professional preservationists were able to see the benefits in saving and enhancing an historic site or object.

"It Takes A Village," is a metaphor that describes perfectly Historic Hawai'i Foundation's belief that we cannot do it alone, just as these volunteer preservationists could not do it alone. HHF works hard at keeping Hawai'i Hawai'i. The most important part is that of your support and participation.

Our deepest thanks to the seven individuals mentioned here. We hope they have encouraged hundreds more who may be eyeing an object, site or even a whole community that they feel deserves preserving.

*Cover: Central Intermediate School on the State and National Register of Historic Places. See profile of Roger Aquino on page 5.  
Photo by Scott Cheever.*



## HISTORIC HAWAI'I FOUNDATION MISSION STATEMENT

**T**he purpose of the foundation shall be to preserve and encourage the preservation of historic buildings, objects, communities, and sites relating to the history of Hawai'i; to promote awareness of and respect for all that is historically significant and architecturally distinctive in our State; and through these efforts, to keep alive and intact for the enrichment of present and future generations the inherent beauty of the Hawaiian Islands and its unique historic role in the development of the Pacific Basin.





## President's Report

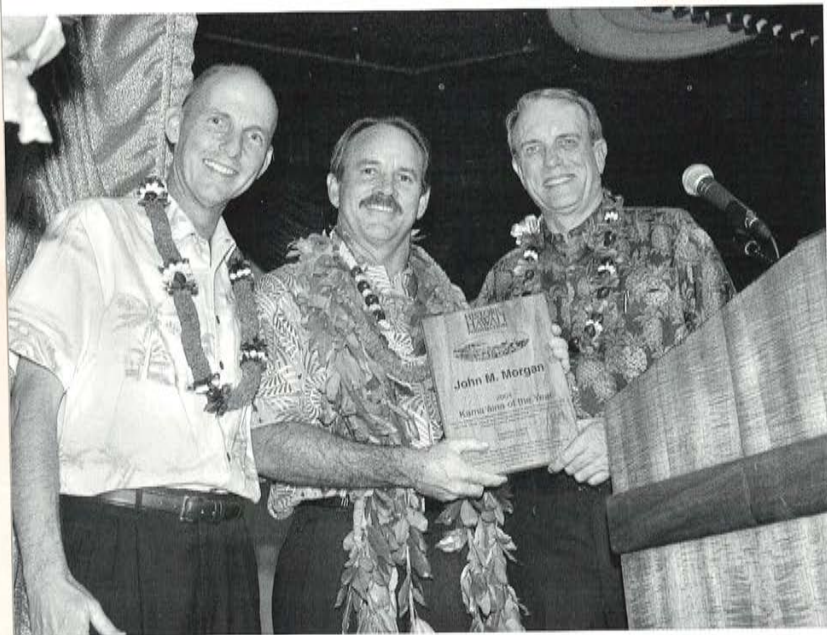
**T**his past year was one of challenges. I believe our response to these challenges will make our organization a stronger one owing to the lessons learned and for the opportunity to step back and take a longer view of Historic Hawai'i Foundation, its goals and role in the community.

The Maui project undertaken by a former trustee, to move the Charles Lindbergh home, Argonauta, to Haleakalā National Park began in earnest in 2003 and then encountered some real problems. We are optimistic that those issues are close to being resolved.

Our Executive Director, David Scott, decided after eight years that he would seek new opportunities. Under his leadership HHF made great progress in a number of key areas, including gaining a sound financial footing. We thank David for the time and talent he invested in the Foundation. We wish him well in his new endeavors.

Before jumping into a search for a new Executive Director, the Board of Trustees decided to hire a seasoned business person as Interim E.D. I am pleased to say that David Cheever is serving in that capacity. He brings many years of business and non-profit experience to our organization in planning, marketing and board relations.

PHOTO BY: RANDY T. FUJIMORI



John Lyles (right) and David Scott congratulates Kama'aina of the Year honoree John Morgan (center).

While he will be responsible for managing HHF on a day-to-day basis, David's main charge will be to identify the character traits, aptitudes and skills required of a successful Executive Director and to work with the Search Committee to coordinate our efforts to find the best qualified person.

Historic Hawai'i Foundation can only do its work and prosper as the community recognizes and accepts our mission to preserve the best of our physical and cultural heritage. Since this occurs largely through the efforts of our members, we plan much greater reach into the community to bring in new members at all levels.

We are pleased to note that the membership category of Heritage Associates has recently been the fastest growing. These are the people whose financial commitment is considerable and we thank them for their generous support. We need to build all membership levels — especially the corporate category — because each group is vital to the overall success of HHF.

It has been a pleasure and a privilege to serve these two years as your president. The Board is a hard working group of stellar individuals who have brought thoughtfulness, experience, sound judgment and hard work to make HHF the organization it is today. I am grateful to each of you for your wise counsel and efforts on behalf of the Foundation.

Our small staff, boosted by some dedicated volunteers, has again performed wonders. I am often amazed at the versatility they demonstrate in making Historic Hawai'i work day in and day out. Thank you.

Many others in the community — such as government leaders, related preservation groups, advisors and the like — have also contributed to the momentum Historic Hawai'i Foundation has achieved. I thank all of you also.

While I am stepping down as your President, I will always have great aloha for Historic Hawai'i Foundation because of the terrific people and the excellent work our organization does to assure a quality future for our community.

Mahalo,



John Lyles



## Executive Director's Report

**T**his annual report covers my eighth and final year as Executive Director of Historic Hawai'i Foundation. It has been a great eight years and I feel that HHF is a bigger, stronger and more effective statewide organization than when I came here in 1996. We had about \$27,000 in the bank when I arrived and I leave with the assets of the organization in excess of \$500,000.

We established an endowment for the first time and are watching it grow. An endowment is a reflection of the commitment of an organization to be a permanent entity. HHF will continue and will thrive.

We have reached out across the state in my eight years here to become truly a statewide organization. Our annual conference focuses on interest important to all the counties of Hawaii and promotes a strong preservation bond. By exchanging information we build partnerships that will continue to expand the preservation movement.



PHOTO BY: SANDY T. FUJIMORI

Scott presented an Historic Preservation Honor Award to Corinne Chun Fujimori, Katie Slocumb and Glenn Mason for the restoration of Queen Lili'uokalani's bedroom at Washington Place.



The restored Queen's bedroom.

PHOTO BY: DAVID FRANZEN

The partnerships we have formed in the last eight years will serve HHF well. We have reached out to embrace the host culture and have established good working relationships with the Hawaiian community. Our stabilization of Kaniakapūpū was a wonderful partnership that continues to bear fruit today. Our assistance in establishing 'Ike 'Āina will allow that independent statewide Native Hawaiian Land Trust to move forward in taking care of the 'āina.

I am moving on – but looking back I am proud of what I have done. I also am proud of the support I have had from the membership of HHF. Together we made a difference.

Aloha & mahalo,



David Scott

## Profile Roger Aquino

*For as long as Roger Aquino can remember he has been interested in history. As head custodian at downtown Honolulu's Central Middle School, Aquino has also taken on the role of the unofficial historian for Princess Ruth whose palace once occupied the site of the school. The 1926 neoclassic revival buildings built in its place are so significant they are listed on the Hawai'i Register of Historic Places and more recently on the National Register.*

*Several years ago, Aquino asked the principal if he could do something to honor Princess Ruth Ke'elikōlani to give the students a better understanding of the school's history. He researched and acquired old photos of the original palace and the Princess, which have been placed permanently in a glass showcase. To help boost the student's school pride, Aquino helps to coordinate the annual school assembly in February to honor the Princess's birthday.*

*Beyond coordinating the school's ongoing building maintenance, Aquino has come up with a new project — researching why the name Ke'elikōlani School is engraved on the building's Kukui Street side hidden behind trees. Why is it there? Was the school once named after the Princess? Leave it to this custodian and he'll be sure to find out.*



## Year in Review

**H**istoric Hawai'i Foundation has a statewide voice and thus the opportunity and responsibility to educate communities about the importance of keeping Hawai'i Hawai'i through historic preservation. A few of the ways our organization accomplishes this are through sponsorship of conferences and lectures, consultation on preservation efforts and problems and participation in community events.

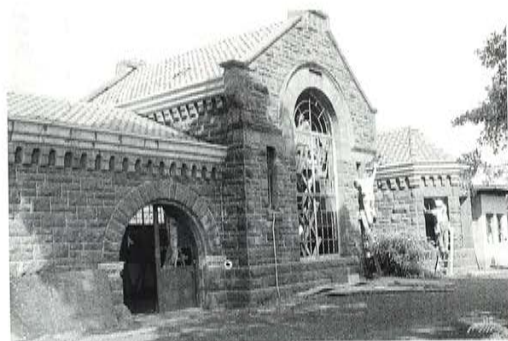
### Lectures

In 2004, we started off the year by co-sponsoring the University of Hawai'i, Historic Preservation Program's annual *Experts at the Palace Lecture Series*. A highlight of this year's series was the talk by, Dr. William Murtagh, the first keeper of the National Register of Historic Places and the founder of the historic preservation certificate program at U.H. Mānoa. Interesting topics were restoration projects at 'Iolani Palace, Washington Place, Mission Houses Museums and historic houses on Hawai'i's military bases. Dr. William Chapman (HHF member), the director of the preservation program at U.H. Mānoa since 1993, deserves many kudos for lining up interesting speakers, who have added greatly to the lecture series growing success, now in its 18<sup>th</sup> year.

Teaming up with another successful program at the University of Hawai'i at Mānoa, HHF partnered with the Travel Industry Management School in May to sponsor *Grass Skirts & Palm Trees: Redefining An Authentic Hawai'i*. Robert McNulty, author of "Economics of Amenity: Community, Futures and Quality of Life", was the keynote speaker. Also lending their talents were Valecia Crisafulli, the small business development specialist for the National Trust for Historic Preservation's Main Street Center, and several local speakers involved in the tourism and preservation fields.

### Participation

HHF was invited by the Hawaii Architectural Foundation to participate in a one-day work party to make the Kaka'ako Pumping Station more presentable. This was done by cleaning up the area and painting parts of the structure. As a bonus Nancy Bannick (HHF Charter and Heritage Associate member)



Kaka'ako Pumping Station

provided the 40 participants with a fascinating history of the pumping station. AIA and Construction Specification's Institute provided Historic Hawai'i booth

space at their annual expo at the Hawai'i Convention Center in November to tell our story more widely. Both activities help HHF maintain good relationships with our allies in the architectural community.

### **Membership and Development**

Tours and activities are an important part of HHF's calendar and are a definite member benefit. These activities also help to spread awareness and entice prospective new members and are covered in the *Membership and Development Report* that follows.

HHF's single, largest fundraising event is the Winter Benefit/Kama'āina of the Year gala in December. To highlight a broader vision of preserving cultural landscapes, we honored John Morgan of Kualoa Ranch as Kama'āina of the Year. Morgan and his family have remained committed to preserving their land without compromising its historic integrity and natural beauty. The sold-out event was made possible through the generosity of many corporate sponsors, members and friends.

### **Consultation**

Consultation with the military was an ongoing process throughout the year. Since 1999, Historic Hawai'i has been actively involved with all branches of the military with Section 106 Reviews, consultations and finalizing Pearl Harbor's Integrated Cultural Resource Management Plan. Miles of historic buildings and sites,

## **Profile** **Gary Smith**

*Raised on Kaua'i, Gary Smith returned to the island from Honolulu in 1976 and quickly realized the urgent need to preserve the history and beauty of Kaua'i. Since the 1980s he has been doing exactly that.*

*Through his own research, Smith has acquired a wealth of knowledge about Kīlauea and is frequently called upon for speaking engagements. As a long time member of the Kīlauea community he helped save the 150 acres which were donated to the U.S. Fish and Wildlife Services. Smith also enjoys leading groups on annual walks to Mokualea Point. When complimented for his selflessness, he is quick to point out the necessity of his actions for the benefit of the community.*

*As one of the original founders of the Kaua'i Public Land Trust, Smith served as its president for ten years. He is on the Public Access, Open Space and Natural Resources Preservation Fund Commission and the Preservation Committee to Restore Kīlauea Lighthouse. The Commission helped pass a law that earmarks 5% of all property taxes to the acquisition of public space.*

coupled with layers of management and personnel, and security issues make it a challenging endeavor. However, the military's deep roots in our islands and their commitment to preserving our history make it a worthwhile association.

### Honor Awards

To promote historic preservation and the people who make preservation happen, the Foundation presented 11 Historic Preservation Honor Awards for projects, programs, publications and organizations. Receiving awards were:

- ❖ **Old Federal Building (U.S. Post Office Custom House and Court House)** which was purchased by a private developer who restored and renovated it and turned it into office condominiums for two governmental agencies. The Old Federal Building, recently renamed the King Kalākaua Building was also awarded the Governor's Preservation Honor Award.
- ❖ **Queen's Conference Center /Mabel Smyth Memorial Building** which was restored and renovated for its continued use as a facility for the medical profession.
- ❖ **Queen Lili'uokalani's Bedroom at Washington Place** which was carefully restored to the 1917 era.
- ❖ **Kaumakapili Church** underwent an extensive structural rehabilitation that returned the 1911 building back to its historic appearance.
- ❖ **Building 78 on Ford Island**, a 1939 Dickey building which was renovated and adaptively re-used as the Navy Lodge.



Old Federal Building

PHOTO BY ALICE SALBOSA

- ❖ ***Pōhaku, The Art & Architecture of Stonework in Hawai'i*** which was a collaborative effort of picturing and describing important stone structures built during the centuries of Hawai'i's history.
- ❖ **Isaacs Art Center at Hawai'i Preparatory Academy**, a former Waimea Elementary School building which was thoughtfully restored and adaptively re-used as a community art center.
- ❖ ***"Guide to the Kona Districts – Ancient, Historic, Heritage Places"*** was an informative guide identifying and documenting Kona's historic resources.
- ❖ **Hānā Belt Road's Nomination to the National Register of Historic Places** in giving Maui the distinct honor of having the first designated historic roadway in Hawai'i.
- ❖ **Historic Lufkin House (Old Wailuku Inn at Ulupono)** which was sensitively restored and revitalized to be adaptively re-used as a bed and breakfast.
- ❖ **Friends of Honolulu Memorial Park** for their grass-roots effort in establishing an organization to save the Sanju Pagoda in Nu'uuanu.



The Queen's Conference Center/Mabel Smyth Memorial Building adjacent to Queen's Medical Center.

2003-2004 Historic Preservation Honor Award Recipients

PHOTO BY: RANDY T. FUJIMORI



## Grants

Through the generosity of the Freeman Foundation, HHF awarded a grant to the Society for Kona's Education and Arts (SKEA) for rehabilitating the 1905 Honaunau Japanese Language School for their headquarters and community center. The project is expected to be completed in 2005. Historic Hawai'i will continue to administer the Freeman grants and help them to foster preservation projects throughout the islands. (See complete list of grant fund recipients for the Freeman Foundation and Hawai'i Preservation Services grant funds.)

## Statewide Efforts

Historic Hawai'i is the only statewide historic preservation organization in Hawai'i. Maintaining a presence on all the islands is important yet challenging. The Foundation's presence in Waimea on the Big Island is especially strong as it has a branch office in the historic Old Waimea Tax office. Since 2002, the County of Hawai'i has leased the historic 1924 building to HHF. It has served many grass-roots organizations who are now supporters of Historic Hawai'i.

# Profile

## Curtis Narimatsu

*Curtis Narimatsu, a Hilo attorney, works overtime to keep Hilo's history alive and preserve it for future generations. As examples, Narimatsu seeks to document the rich and colorful history of old Hilo town and to collect the stories of tsunamis that have uniquely shaped the town. He worked with the Pacific Tsunami Museum to reconstruct the history of "Shinmachi," a section of Hilo wiped out by the 1946 and 1960 tsunamis. His knowledge, records and personal contacts were the bedrock of the project.*

*Narimatsu credits his passion for history and commitment to volunteering to his childhood experiences. Specifically, he recalls accompanying his father, a disaster relief volunteer with the Red Cross, on aid projects such as the one that followed the 1960 tsunami. His warm and inviting personality enables Narimatsu to easily develop relationships with whomever he meets, thus expanding his wealth of knowledge.*



## Real Property Preservation Committee

Frank Brandt, Jackie Mahi Erickson, Gary Gill, Millie Kim, Carolyn Larson, Tom Quinlan, David Scott, Barbara Shideler, and John Whalen served on the HHF Real Property Committee this year under the leadership of Carolyn Larson.

### Statewide Inventory of Historical Sites

Work continued facilitating the expansion and improved usefulness of existing statewide inventories/databases of historical sites. The goal is to document and improve access to information about Hawai'i's historical sites in order to achieve better consideration of these resources in planning, legislation and preservation efforts.

### Sugar Heritage Initiative

As Hawai'i's sugar era slips away, the physical remains of this formative chapter in the state's history are still scattered throughout the islands. The Real Property Committee is investigating cost-effective ways to document Hawai'i's undocumented sugar heritage sites before they fade into history.

### Legislation Supporting Historic Preservation

The committee successfully shepherded a City and County of Honolulu historic commercial property tax reduction bill through the legislative process. It was signed into law on June 21, 2004 (Ordinance 04-17, ROH Section 8-10.30). This important measure encourages preservation and renovation of historic commercial structures on O'ahu by providing significant tax relief for qualified commercial properties.

### Individual Properties of Concern/Opportunity

The committee continued to identify historic structures and places across the state that are in peril from neglect or re-development. HHF offered feasibility and planning council, technical expertise, and funding advice to land owners; and advocated to help save these landmarks for future generations.

### Freeman Foundation Grants

The Real Property Committee continues to provide input on potential recipients and properties under consideration for preservation funds from the Freeman Foundation.



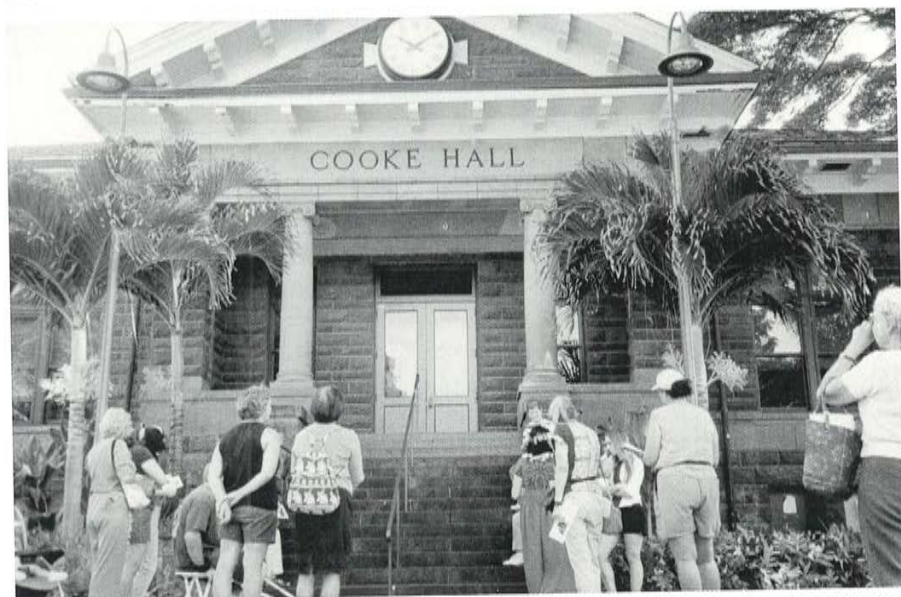
## Membership & Development Report

### Annual Meeting

The historic Dillingham Lodge, in the foothills above Mokule'ia, was the delightful venue of Historic Hawai'i Foundation's 2004 Annual Meeting on April 17. Members stepped back into time to an era of timeless elegance and Hawaiian grandeur. The historic plantation estate covers more than 2,500 acres and has 100-foot tall Royal Palm trees on both sides of the long driveway entrance. Part owner and HHF member Bernie Bays spoke about the renovations that had taken place and future plans for the lodge. Following the meeting, attendees enjoyed refreshments and music in the crisp, cool air of the front lawn.

### Tours

On October 29, members and guests enjoyed a special opportunity to tour one of Hawai'i's historic treasures: Punahou School. Tour participants took a walking tour, learned about the history of the school and visited the campus' notable historic buildings, and exotic plants and trees. The tour ended in the pavilion at the home of the Punahou School's president. While overlooking Honolulu and the ocean on a beautiful day participants enjoyed light pūpū and organic iced teas. *Mahalo* to Punahou President, Jim Scott for the use of the pavilion, Punahou School personnel for their help with the tour and Herbert Kamiyama (HHF Corporate member), President of Hawaiian Mamaki Tea Plantation, for donating the teas.



Tour members gathered outside Cooke Hall. In 1907, Architect Harry Livingston Kerr designed the building as a library. Currently the building is used as office space.

HHF and Duck Tours Hawaii collaborated in creating three amphibious tours specifically tailored for HHE. Aboard a fully restored World War II amphibious vehicle, participants were taken off-the-beaten-path to areas in downtown, Chinatown, Iwilei, Sand Island, and Ke'ehi Lagoon. A Narration gave them the history of the area, little known facts, and interesting stories. Once off of the road, the Duck entered the water at Ke'ehi Lagoon where participants were treated to more historic information, a beautiful sunset and refreshments while listening to musician Ed "Kani" Kaimi playing his soothing guitar music.

### **Hawai'i Historic Preservation Awareness Day**

On May 4, Historic Hawai'i Foundation participated in the Capitol Historic Preservation Fair at the State Capitol in conjunction with Historic Preservation Month and National Historic Preservation Week. The purpose of the fair is to aid legislators' and their staff's understanding of the importance of historic preservation to the overall vitality of Hawai'i. Governor Linda Lingle proclaimed May 4 Hawai'i Historic Preservation Awareness Day. *Mahalo* to Representative Corinne Ching (HHF member and HHF Board Trustee) for organizing the event.



President Lyles accepts Governor Lingle's proclamation for Historic Preservation Day from Trustee Representative Corinne Ching.

## **Profile** **Barbara Makua**

*Barbara Makua's interest in historic preservation in Hawai'i peaked while she was on one of HHF's preservation parades in the 1980s. Although she was a longtime member of the National Trust for Historic Preservation, she had not been involved at the local level.*

*Since then Makua has been a loyal volunteer and supporter of Historic Hawai'i Foundation and numerous other like organizations — nearly 20 at last count. She has dedicated countless hours to Moanalua Gardens Foundation's annual Prince Lot Festival and has served on many of the organization's committees. She was also a founding member and board member of the Kailua Historical Society.*

*At HHF Makua is more than a volunteer. The staff can count on her to help whenever and where ever she is needed. She currently serves as the volunteer membership secretary but also helps at most events and functions. Her assistance allows the Foundation staff to focus on implementing our advocacy, education and preservation programs.*



Winners of the 10th Annual Keiki Coloring Contest

### Keiki Coloring Contest

The Hotel Hānā Maui, Kaumakapili Church, and the USS Arizona Memorial were the three buildings featured in the 10<sup>th</sup> annual Keiki Coloring Contest. More than 1,000 entries were received statewide from children ages 2-12. Eighteen winners were selected and they with their family and friends attended the awards ceremony at the Bishop Museum on May 23. The 2004 program was made possible by a grant from the Hawai'i Community Foundation's Historic Preserves of Hawai'i Fund.

Thank you to Mary Cooke (HHF Board Trustee and Heritage Associate member), Eric Lopez of the University of Phoenix-Hawaii Campus (HHF Corporate member), and Glenn Mason of Mason Architects, Inc. (HHF Corporate and Individual member), for volunteering to judge the contest.

We also thank William Brown (HHF Board Trustee, Corporate, and Individual member) for the use of the Bishop Museum Atherton Halau for the awards ceremony. *Mahalo* to Big Dogs Sportswear, Bishop Museum, Blockbuster Video, Burger King, Costco Wholesale, Dave & Buster's, DFS Hawaii, Hawaiian Graphics, Hilton Hawaiian Village, HMSA, Ice Palace, Jamba Juice, KAJ's Products, McDonald's of Hawaii, Outrigger Hotels & Resorts, Pearlridge Center, Seven-Eleven Hawaii, University of Phoenix-Hawaii Campus, Waikiki Aquarium and Wallace Theatres for donating prizes and supplies.

## Golf Tournament

Historic Hawai'i received a portion of the proceeds from the 12<sup>th</sup> Annual Building Owners and Managers Association Del Hesch Golf Tournament held at the new 'Ewa Beach Golf Club on June 4. A special *mahalo* to BOMA, Armstrong Building Maintenance (HHF Corporate member) and its Vice-President of Sales, Pat Mullholland.

## Heritage Associates' Reception

Heritage and Corporate Heritage members, and their guests enjoyed a fabulous evening at the Kahala Mandarin Oriental Hawai'i for the annual Heritage Associates Reception on Thursday, September 2. Members and guests were treated to delicious hors d'oeuvres and decadent desserts followed by inspirational speeches from Board President John Lyles, Executive Director David Scott and Development Director Patty Young-Kingsbury. A special *mahalo* to our gracious host, general manager Jan Goessing (Corporate Heritage Associate and Board Trustee) of the Kahala Mandarin Oriental Hawai'i and his staff for hosting the festive event.

# Profile

## Leonard Tam

*Leonard Tam has been called a guardian angel for his work in preserving and restoring Mau'umae Nature Park. In 1994, Tam, a Kaimukī Neighborhood Board member and original member of the Mau'umae Nature Park Committee, worked with volunteers from the Sierra Club, Boy Scouts, Hawaiian Trail and Mountain Club and Hawai'i Bicycling League for six months to turn the 33 acre City and County owned parcel in upper Kaimukī into a nature park.*

*The group reintroduced native species, such as kou, alahe'e, milo, akia and wiliwili, into the park and installed a drip irrigation system to ensure their successful growth. Additionally, they created a loop trail through 29 acres on the mauka side of the Park. This trail not only provides the community access to the Park, it also serves as a firebreak, which came in handy shortly after the Park opened in December 1994 when a brush fire ignited in the area. The Honolulu Fire Department was able to successfully fight the fire from two sides by using the newly-installed trail. Over the years, the park has become overgrown and lost several native plants through neglect. With the help of a volunteer group, Tam hopes Mau'umae Nature Park will eventually become a botanical garden, continuing to provide the community with access to the unique, cultural and natural beauty of Kaimukī.*

**STATEMENT ASSETS, LIABILITIES AND NET ASSETS**

As of December 31, 2004

**CURRENT ASSETS**

Cash (including interest-bearing accounts) .....	\$ 112,598
Investment - unrestricted .....	278,897
Pledges receivable .....	7,846
Grant receivable .....	—
Prepaid expenses .....	2,225
Total current assets .....	<u>401,566</u>

**NONCURRENT ASSETS**

Investment - restricted .....	190,000
Office furniture and equipment - net .....	4,324
Security deposit .....	75
Total noncurrent assets .....	<u>194,399</u>

<b>TOTAL ASSETS</b> .....	<b>\$ 595,965</b>
---------------------------	-------------------

**LIABILITIES AND NET ASSETS****CURRENT LIABILITIES**

Accounts payable .....	\$ 5,039
Accrued liabilities .....	1,126
Grants payable .....	10,016
Total current liabilities .....	<u>16,181</u>

**NET ASSETS**

Unrestricted .....	346,722
Temporarily restricted .....	27,592
Permanently restricted .....	205,470
Total net assets .....	<u>579,784</u>

<b>TOTAL LIABILITIES AND NET ASSETS</b> .....	<b>\$ 595,965</b>
---	-------------------

**STATEMENT OF SUPPORT, REVENUE AND EXPENSES**

For the Year Ended December 31, 2004

**CHANGES IN UNRESTRICTED NET ASSETS**

Revenue and support .....	\$ 149,526
Fundraising .....	112,107
Membership .....	104,707
Net assets released from temporary restrictions .....	51,008
Donated property and facility .....	35,405
Investment income and other income .....	24,235
Other contributions .....	2,075
Preservation contributions .....	<u>479,063</u>

**Expenses**

Personnel and related costs .....	144,734
Fundraising costs .....	115,109
Grants to others .....	95,854
Office and administrative .....	36,483
Lease rent .....	21,832
Preservation program costs .....	20,253
Professional fees .....	15,881
Conferences and travel .....	5,387
Total expenses .....	<u>455,533</u>

Increase in unrestricted net assets .....	<u>23,530</u>
---	---------------

**CHANGES IN TEMPORARILY RESTRICTED NET ASSETS**

Temporarily restricted contributions .....	19,725
Net assets released from temporary restrictions .....	<u>(104,707)</u>
Increase (decrease) in temporarily restricted net assets .....	<u>(84,982)</u>

**CHANGES IN PERMANENTLY RESTRICTED NET ASSETS**

Permanently restricted contributions .....	5,025
Increase in permanently restricted net assets .....	<u>5,025</u>

<b>INCREASE (DECREASE) IN NET ASSETS</b> .....	<b>(56,427)</b>
--	-----------------

<b>NET ASSETS - Beginning of year</b> .....	<b>636,211</b>
---	----------------

<b>NET ASSETS - End of year</b> .....	<b>\$ 579,784</b>
---------------------------------------	-------------------

## STATEMENT OF CASH FLOW

For the Year Ended December 31, 2004

### CASH FLOWS FROM OPERATING ACTIVITIES

Increase (decrease) in net assets .....	\$ (56,427)
Adjustments to reconcile increase(decrease) in net assets to net cash provided by operating activities:	
Unrealized gains from investment .....	(23,522)
Realized losses from sales of investments .....	—
Depreciation .....	1,446
(Increase) decrease in:	
Pledges receivable .....	10,213
Grant receivable .....	5,000
Prepaid expenses .....	19
Increase (decrease) in:	
Accounts payable .....	(30,212)
Accrued liabilities .....	(2,732)
Grants payable .....	10,016
Net cash provided (used) by operating activities .....	<u>(86,199)</u>

### CASH FLOWS FROM INVESTING ACTIVITIES

Sales of investments .....	378,418
Purchases of investments .....	(398,480)
Purchases of office furniture and equipment .....	(2,586)
Net cash used by investing activities .....	<u>(22,648)</u>

**NET INCREASE (DECREASE) IN CASH** ..... (108,847)

**CASH - Beginning of year** ..... 221,445

**CASH - End of year** ..... \$ 112,598

## DETAIL OF NET ASSETS

At December 31, 2004, net assets consisted of the following:

Unrestricted net assets .....	\$ 346,722
Net assets temporarily restricted for:	
Preservation Fund .....	\$12,049
Society of South Kona's Education & Arts .....	10,000
Argonauta Project .....	—
Hui Aloha Church .....	5,543
Total temporarily restricted net assets .....	<u>\$ 27,592</u>
Net assets permanently restricted for:	
Bretzlaff Foundation Endowment .....	\$ 190,000
Historic Hawaii Foundation Endowment .....	15,470
Total permanently restricted net assets .....	<u>\$ 205,470</u>
<b>TOTAL NET ASSETS</b> .....	<u><u>\$ 579,784</u></u>

Net assets were temporarily restricted for the Preservation Fund (for historic preservation in Hawaii), Society of South Kona's Education & Arts, the Argonauta Project (to preserve the Charles and Anne Morrow Lindbergh home in Maui), and the Hui Aloha Church (for materials to preserve the Church). Funding for the Argonauta Project was also released from the Preservation Fund during the year ended December 31, 2004. Net assets were permanently restricted for the Bretzlaff Foundation and Historic Hawaii Foundation Endowments (both are for historic preservation activities in Hawaii).

The complete audited financial statements, prepared for Historic Hawai'i Foundation by Detor & Williams, may be obtained by calling the Foundation office at (808)523-2900.



## Grants

### Freeman Foundation Grant Recipients

\$182,500 Total projects funded since 2002.

#### O'ahu

St. Andrews Cathedral .....	\$75,000
Kaumakapili Church .....	\$47,500

#### Hawai'i

Haili Church .....	\$50,000
Society for Kona's Education & Arts (SKEA) .....	\$10,000

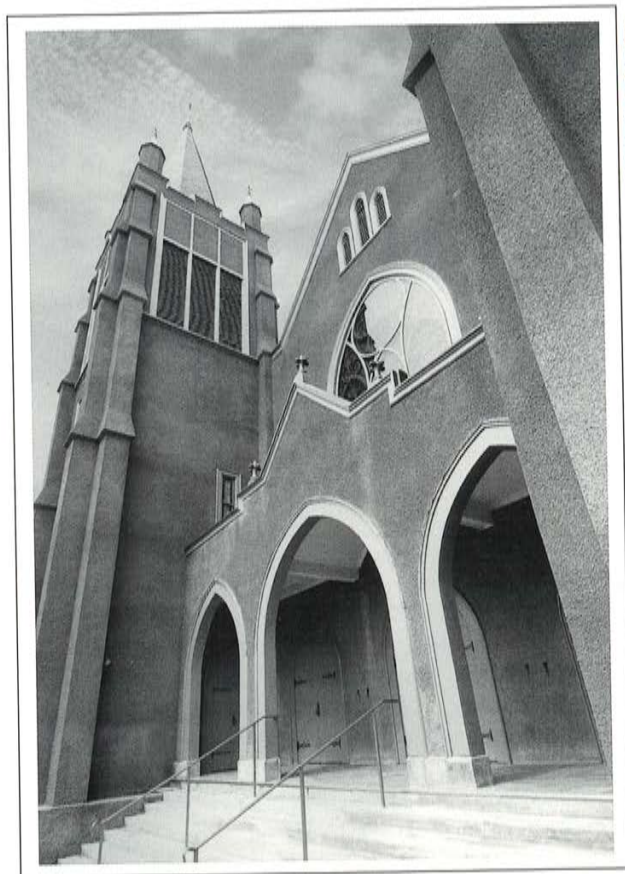


PHOTO BY: DAVID FRANZEN

Kaumakapili Church

## Hawai'i Preservation Services Fund Grant Recipients

\$49,475 Total projects funded since 1998.

### O'ahu

'Ewa Villages Nonprofit Development Corp. ....	\$9,800
Ka'ala Farm, Inc. ....	\$4,850
Hawaiian Swimming Legacy Exhibit ....	\$3,200
Hawai'i Audubon Society ....	\$2,900
Friends of Pearl Harbor Historic Trail ....	\$2,000
Hawai'i's Thousand Friends ....	\$1,250
Dorothy J. Esser Theatre Foundation ....	\$1,000

### Hawai'i

Pulama Ia Kona Heritage Preservation Council. ....	\$8,500
Daifukuji Soto Mission ....	\$4,800
Haili Congregational Church ....	\$2,500
Na Hoaloha 'Ainahou ....	\$2,175
Lyman House Memorial Museum ....	\$2,000

### Kaua'i

Kaua'i Historical Society ....	\$2,500
--------------------------------	---------

### Maui

Friends of Moku'ula, Inc. ....	\$2,000
--------------------------------	---------



Daifukuji Soto Mission



## 2004 Historic Hawai'i Members

\* Indicates Charter Member

### Individual Heritage Leader

Sharon & Thurston  
Twigg-Smith\*

### Heritage Patron

Fred & Bonnie Fong  
Easton & Nedra Manson  
Alice K. Robinson

### Heritage Benefactor

Ethan & Jean Abbott  
Samuel A. & Mary M. Cooke\*  
Leighton & Lani Lam  
Matt & Malia Megorden  
C. Dudley Pratt, Jr.\*

### Heritage Associate

Mr. & Mrs. Douglas D. Abbey  
Ms. Nancy Bannick\*  
Ms. Margery Bronster  
Ms. Lyn Brown  
Mr. Robert Carpenter &  
Dr. Garrett F. Saikley  
Dr. Ann B. Catts\*  
Mr. & Mrs. Conrad G. Conrad III  
Mr. Peter G. Drewlinier &  
Mr. Charles E. Higa\*  
Karl and Megumi Essig  
Mr. & Mrs. Dean A. Eyre Jr.\*  
Mr. & Mrs. Michael &  
Nancy Fisch  
Patricia Salisbury Godfrey  
James & Priscilla Growney  
Robert & Mary Hastings  
Ron and Sanne Higgins  
Ann & Oliver Hutaff  
Julia Ing  
Mrs. Mary King  
Mr. & Mrs. Michael &  
Spencer Leineweber  
Mrs. K.K. Marignoli  
Mr. & Mrs. Benjamin L. Marx\*  
Ralph & Paki Portmore  
Mr. Larry Rodriguez  
Mr. David Scott  
Mr. & Mrs. Dwayne &  
Marti Steele  
Mrs. Barbara B. Tilley  
Col. & Mrs. W.G. Van Allen\*  
Gulab & Indru Watumull\*  
Scott Wilson & Christine Yano  
Mr. Eugene Wolfbauer

### Preservation Sponsor

Joan S. Bellinger\*  
Mr. & Mrs. John Bustard  
Ms. Kailli Chun  
Mrs. Edith S. Cooke\*  
Mr. Michael A. Faye  
Mr. & Mrs. Lloyd Fujie  
Mr. & Mrs. James F. Gary\*

Mr. & Mrs. Sherwood R.H.  
Greenwell\*  
Melvin Y. Kaneshige  
Matt & Malia Megorden  
Mr. Wayne James Rapozo  
Mr. Willard J. Stuka

### Preservation Supporter

Mr. Steven Ai  
Scott & Laura Fernandez  
Dealey Herndon  
Tareq & Laura Hoque  
Glen Kaneshige & Robin Leong  
Ms. Jacque Parkinson  
Mr. Ron Sorrell  
Steven and Karen Torkilson  
J.D. & Julie Watumull  
R.E. Jr. & Karen K. White\*

### Preservation Partner

Neil Abercrombie/Nancie  
Caraway\*  
Mr. Peter K. Apo  
Mr. George R. Ariyoshi  
Nancy G. Backes  
Anne K. Baldwin  
Mr. John C. Baldwin  
Mr. J. Gordon Beaton  
Mrs. Gertrude F. Berger  
Mr. James Bier  
Mr. Carter Black  
Mr. Donald A. Blackford  
Mr. Scott Bradley  
Mr. Frank Brandt  
Ms. Lesley Brey &  
Mr. Kenneth Kam  
Mr. Kenneth Brown  
Ms. Virginia Brown\*  
Mr. William Brown  
Mr. & Mrs. H. William Burgess  
Mrs. Reynolds G. Burkland\*  
Mrs. Margaret M. Cameron  
Mr. Paul E. Campbell  
Mr. Daniel Chang  
Dr. Murray Chapman  
John Charlot  
Mr. David Cheever  
Mr. Edward Choi  
Ms. Jean S. Clarey\*  
Richard & Terry Clifton  
Mrs. Allyn Cole, Jr.\*  
Ms. Linda Faye Collins  
David E. K. Cooper  
Mr. Kainoa Daines  
Mr. & Mrs. C.E. Damon Jr.  
Colonel and Mrs. Wales S. Dixon  
Ms. Mary Jane Dobson  
Mr. & Mrs. Mal Dohrman  
Mrs. Dolores Dos Santos  
Mr. Mike Durant  
Ms. Maki Kuroda  
Mr. Henry Eng\*  
Mr. Stanton Enomoto

Bruce and Jackie Erickson  
Ms. Majory Fairbanks\*  
Mrs. Barbara C. Faye\*  
Ms. Helen Felsing  
Mr. & Mrs. Fleming  
Mrs. Phyllis G. Fox\*  
Mr. Keoki Freeland  
Ms. Mary Jo Freshley\*  
Ramsay & Norman  
Goldstein, M.D.\*  
Mr. & Mrs. Holbrook Goodale  
Mrs. Margo Goodwill  
Mr. James S. Gray\*  
Mr. Ralph Gray  
Mr. Bernard Gruenke  
Randy & Anna Grune  
Mr. & Mrs. Frank S. Haines\*  
Ms. Jenny Hartley  
Susan Hatfield  
Mr. Dave Hayter  
Mrs. Hazel Hee  
Mr. & Mrs. David &  
Nery Heenan  
Mrs. Masuye S. Hew  
Kenneth B. Hipp  
Dudley & Sono Hirose-Hulbert  
Mr. Al Hoffman  
Lynne Honbo  
Robert & Tamura Horcajo  
Mr. Bruce G. Jackson  
Mrs. Lilli L. Jacobson  
Mrs. Margorie Irwin James\*  
Flo Johansen  
Mr. Rex Johnson  
Hon. & Mrs. Alan C. Kay\*  
Mr. & Mrs. Robert D. Kelce  
Ms. Victoria Kim  
Mr. T.D. King Jr.\*  
Mrs. Virginia D. Koch\*  
Jill Loui  
Gerrit R. Ludwig\*  
Mr. Jeffrey M.C. Lum  
Mr. & Mrs. Stanley Markle  
Mrs. Cynthia H. Marnie  
Mr. and Mrs. George Mason  
Mr. Glenn E. Mason\*  
Ms. Lurline W. McGregor  
Rod & Sharon McPhee  
Franklyn Meyer  
Ms. Antya Miller  
Virginia Murison &  
Kenneth Whitcomb\*  
Mrs. Janice K. Nam  
Ms. Sharon Narimatsu  
Lois and John Nash  
Mr. Stephen Nash  
Ms. Julia Neal  
Mr. Bradley C. Oliver  
Mr. & Mrs. William E. Olson  
Mrs. Nancy Peacock  
Dr. James Penoff\*  
Mr. & Mrs. Alan M. Peterson  
Ms. Diane J. Plotts\*

Mr. William David Pratt  
 Ms. Lenore M. Prehler\*  
 Ms. Rosalie Prussing  
 Mr. Charles Raven  
 Mr. Ryon Rickard  
 Mrs. Jean G. Rigler\*  
 Mr. & Mrs. Kenneth S. &  
 Shaunagh G. Robbins  
 Richard Romer  
 Pete & Susan Roney  
 Ms. Cynthia Rubenstein  
 Rod Santos  
 Annie & Andy Scott  
 Col. & Mrs. David Shanahan  
 Matthew J. Shim, Capt, USAF  
 John and Kitty Simonds  
 Jack & Ann Simpson  
 Mr. Jim Smart  
 Barbara J. Smith  
 Edwin & Cynthia Sorenson  
 Ms. Berenice R. Spalding  
 Jim & Jeri Steiner  
 Mr. Oswald Stender  
 Mr. & Mrs. E. Grant Story  
 Ronald Swafford  
 Mr. & Mrs. James Tam  
 Peter & Barbara Thacker  
 Miss Helen Ladd Thompson  
 Laurie Tom, M.D.  
 Steve & Karen Torkilson  
 Mrs. Joanne V. Trotter\*  
 Genevieve F. Trout\*

Mrs. Betty M. Vitousek  
 Ms. Patricia Ward Walter  
 Miss Saucy Walter  
 William H. Warren  
 Carlos A. Weber  
 Chipper & Hau'oli Wichman  
 Ms. Wendy Wichman  
 Mrs. Elizabeth D. Wick  
 Gaylord & Carol Wilcox\*  
 Mr. & Mrs. A. James Wriston  
 Kristy Yamada  
 Lori K. Yamada &  
 William M. Young  
 Mr. Allan Yasue  
 Ms. Yvonne Yee  
 Mr. Doug Young  
 Stanley & Janet Zisk

#### Family

Mrs. Grace B. Ackerman\*  
 Mr. & Mrs. Charles W. Adcock\*  
 Mrs. Earlene M. Albano  
 Mr. Lowell Angell  
 Mr. Herb Basik  
 Mr. & Mrs. Clint & Mimi Basler  
 John & Maile Bay  
 A. Bernard Bays  
 Mr. and Mrs. Frank J. Bednar  
 Mrs. Mary Louise Blackburn  
 James & Madeleine Budde  
 The Bunten Family  
 John H. Caldwell

Mr. David Callies  
 Mr. Terence Carolan  
 Fredrica & Paul Cassiday  
 Mrs. Joan Chalmers  
 Philip & Gerry Ching\*  
 Mr. Thomas S. Conger  
 Clifford & Louisa Cooper  
 Jean F. Cornuelle\*  
 Dr. & Mrs. Leslie H. Correa  
 Ms. Polly Cosson  
 Mr. Richard H. Cox  
 Mr. Merle D. Crow  
 Mr. & Mrs. R. Dougal Crowe\*  
 Mrs. Thomas Culbertson  
 Paul Dahlquist  
 Mr. and Mrs. Gordon H. Damon  
 Duncan & Joan Dempster  
 Mr. Jeffrey N. Dodge  
 Ms. Dorothy B. Douthit  
 Mr. Dennis Elwell  
 Ms. Patricia G. Engelhard\*  
 Uson & Lani Ewart  
 James & Sally Ewing  
 Mr. Thomas A. Fee  
 Mary, Dennis & Dylan Fern  
 Mr. Joseph Ferraro  
 Mr. Kenneth Fiske  
 Vasanti and Joel Fithian  
 Dr. Joanne Flannery  
 Mr. L. Richard Fried, Jr.  
 Mrs. Amy Fullaway  
 Mr. Frederick H. Furer\*

## Profile Linda Sproat

*Linda Sproat is a member of one of ten original families that saved one of the last remaining, complete ahupua'a in Hawai'i. In the late 1970s the Waipā ahupua'a on Kaua'i was slated for development into gentleman farm lots. Concerned about the loss of an area long used by the community, the families organized and formed the Hawaiian Farmers of Hanalei in 1982.*

*In the following years, the group petitioned and negotiated with Kamehameha Schools for permission to lease the land. In 1986, they were finally granted a lease to the 1,400 acre ahupua'a. It remains as the only intact ahupua'a in the state of Hawaii.*

*The Waipā ahupua'a is now managed by the Waipā Foundation, a non-profit organization headed by Linda's daughter Stacy Sproat. The Foundation promotes stewardship of the land and serves as a Hawaiian community and learning center. It has planted taro fields and makes poi for the community on Thursdays. Besides her other numerous community volunteer duties, Linda delivers poi and cooked taro to the kūpuna living on Hawaiian homesteads. In addition, her summers are spent teaching the keiki at the Foundation's summer programs.*

Mrs. Ermine C. Gartley  
 Ms. Shelley M. Germain  
 Mr. William Gleason  
 Mr. Donald W.Y. Goo\*  
 Ms. Loriann Gordon  
 Mr. Robert S. Gordon  
 Mr. Robert B. Graham  
 Tannis Grimes & Charles Hug  
 Mr. & Mrs. Frank Haas  
 Mr. & Mrs. William S. Haines  
 Ms. Gaylien S. Hall  
 Mrs. Catherine E. Harris  
 Mr. & Mrs. Donald G. Hasenyager\*  
 Mr. Mark H. Hastert  
 Mr. Stephen Haus  
 Mr. Frank O. Hay  
 Ms. Lani Hearn  
 Dr. George H. Herbig  
 Mr. & Mrs. Melvin M. Hirose  
 Ms. Marjorie W. Hyman  
 A. Miyo Ichijo  
 Mr. & Mrs. Stanley K. Ikeda  
 Milton & Lucy Inouye  
 Mrs. Frederick G. Irwin  
 Mr. & Mrs. Walter & Delphine Jamieson  
 Reverdy Johnson  
 Mark R. Jolly & Laura Mizumoto  
 Dr. R. Bruce Joseph  
 Mr. Howard H. Karr  
 Kauai Historical Society  
 Charles & Beverly Kever  
 Mary Lou Kekuewa  
 Ms. Cathy Kelihoomalu  
 Mr. Jack Keppeler  
 Mrs. Kathleen Keys  
 Mr. & Mrs. Harvey King  
 Mr. Bill Koll  
 Thomas Kosasa  
 Mr. Alton T. Kuoka  
 Mr. & Mrs. John R. Lacy  
 Ms. Richanne Lam  
 Larry & Linda Langley  
 Miss Teresa Law  
 Dr. & Mrs. Jack M. Layton  
 Mr. Reginald W.T. Lee  
 Michael & Helen Leidemann  
 Ms. Catherine Smith Lentz  
 Mr. Richard M. Libbey\*  
 Barbara and Tony Long  
 Mrs. Elia A. Long  
 Aldona & Robert Look  
 Ms. Virginia Lowell  
 Mrs. Deborah B. Lowry  
 George R. Lowson  
 Mrs. Ellen M. Luhrs  
 Mr. & Mrs. James F. Lynch, Jr.  
 Mr. & Mrs. Samuel A. B. Lyons\*  
 Mr. Fujio Matsuda  
 Abigail Maynard & Conor Finlay  
 Mr. William McCord  
 Mr. James M. McCutcheon\*  
 Mr. Bruce McEwan\*  
 Mr. John Williams McGrath  
 Ms. Teresa A. McHugh

Mr. Gilbert Mendelson  
 Mr. & Mrs. Bob & Evanita Midkiff\*  
 Mr. John Monnett  
 May & Don Moore  
 Dr. Edward J. Morgan, M.D.  
 Ms. Tonia Moy  
 Mr. & Mrs. Sanford Murata  
 Margaret Gosling Nesbitt\*  
 Mr. & Mrs. John F. Nielsen  
 Mrs. Matsuyo Nose\*  
 Mrs. Patricia M. Nottingham  
 Mr. & Mrs. Edwin T. Okada\*  
 Buck & Ethel O'Neill  
 Ms. Helen Otoshi  
 Lorraine Palumbo  
 Mr. & Mrs. Richard Y. Pang  
 Mr. & Mrs. Edward & Jaqueline Parnell\*  
 Dr. Joan Daniels Pedro  
 Mrs. Christian Peterson  
 Mr. Alex L. Pickens  
 Mr. & Mrs. Norman Piianaia  
 Carol & David W. Pratt  
 Miss Joan C. Pratt\*  
 Mrs. Robert Purdue\*  
 Mr. & Ms. Terry & Cynthia Quisenberry\*  
 Sue & John Ritchie  
 Ms. Lori Sablas  
 Jennifer Saville  
 Maureen Schaeffer  
 Allan & Pam Schildknecht  
 Mr. Oren Schlieman  
 Ms. Dorothy Scott  
 Ms. Mildred Seastrom\*  
 Ms. Barbara J. Service  
 Phil & Gay Sevier  
 Mr. Richard Sifuentes  
 Mr. & Mrs. Robert & Karen Silverstein  
 Keri & Robert Sison  
 Raynard & Cheryl Soon  
 Mr. & Mrs. Carl Sorem  
 Mr. Robert W. Sparks  
 Dr. & Mrs. Arthur Sprague  
 Mr. Robert J. Stanley  
 Mrs. Marilyn Stassen-McLaughlin\*  
 Hawaii State Historic Preservation Division  
 Herta Stevens  
 Swoish Family  
 Mr. James Swoish  
 Ms. Chieko Tachihata  
 Ms. Angeline Tamekazu  
 Mr. James E. Tayon  
 Mr. & Mrs. B.P. Thibadeau  
 George & Ruth Tokumi  
 Nancy Evans Tudor  
 Mr. & Mrs. Albert F. Turner  
 Mrs. Floraine F. Van Orden  
 Marion N. Vaught\*  
 Ms. Coralie Vellis\*  
 Mr. & Mrs. Albert J. Vivas Jr.  
 Richard and Melinda Walker

Mr. R. Wakefield Ward  
 Ms. Katherine H. Wery\*  
 Robert Wheeler & Marcy Fleming  
 Mr. & Mrs. Stratford L. Whiting\*  
 Ms. Wilma K. Wilkie  
 Dr. De Etta C. Wilson  
 Mr. Thomas W. Wilson  
 Mr. & Mrs. Clayton Winger  
 Mr. Byrnes Yamashita  
 Mr. Mark Yeackel & Ms. Barbara Schneider  
 Mrs. JoAnn Yee  
 Ms. Ann K. Yoklavich  
 Mr. & Mrs. Lee & Patty Young-Kingsbury  
 William and Georgina Yuen  
 Ms. Kristin Zambucka  
 Annette & Chuck Zapf

### Individual

Mrs. Velma Akinaka\*  
 Allen County Public Library  
 Vanessa Ann Applbaum  
 Ms. Janet Atkins\*  
 Mr. George Atta  
 Ms. Patricia A. Avery  
 Dale Bachman  
 Ms. Monica Bacon  
 Mrs. Diane P. Barrett  
 Mrs. Lisa Barton  
 Mrs. Carolyn A. Berry  
 Bishop Museum Library  
 Ms. Robyn B. Blanpied  
 Mr. William O. Boland  
 Ms. Balbi Brooks  
 Dr. Larry Burgess  
 Ms. Margaret Byrd  
 Mr. Thomas G. Cabrinha  
 Mr. J. Bruce Camino  
 Mr. Gary Canner  
 Mr. Steve Case  
 Mr. George Casen  
 Ms. Momi Cazimero  
 Ms. M.L. Chang  
 Ms. Stephanie Chang  
 Mr. William Chapman  
 Charles Reed Bishop Learning Center  
 Mr. Scott Cheever  
 Mrs. Melanie Chinen  
 Ms. Corrine Ching  
 Mrs. Pauahi Clark  
 Dr. William T. Cleghorn  
 Mr. Edward K. Conklin  
 Cooke Library-Punahou School  
 Ms. Marianne Cooper  
 Mr. Eric G. Crispin  
 Mr. Robert M. Crone  
 Ms. Joy Davidson  
 Mr. Timothy DeLaVega  
 Mr. Peter Dease  
 Mr. Philip J. Deters  
 Ms. Hinda Diamond  
 Ms. Dawn Duensing  
 Mrs. Marion A. Durant\*

Ms. Coila Eade  
 Mrs. Raymond D. Emory\*  
 Ms. Lynn Erfer  
 Ms. Marsha Erickson  
 Ewa Villages Non-Profit  
 Development Corp.  
 Chris Faye  
 Ms. Stephanie L. Fitzpatrick\*  
 Mrs. Mollie Foti  
 Noelani Fowler  
 Mr. Robert M. Fox, AIA\*  
 Darlene A. Frybarger  
 Thuy Fujimoto  
 Mr. Gary Gill  
 Ms. Sally Glenn  
 Mr. David M. Goetz  
 Ms. Agnes Griffin  
 Pat Griffin  
 Ms. Denise Griffith  
 Mr. Jack Grindstaff  
 Ms. E. Doanie Hare

Ms. Barbara A. Harger  
 Mr. Robert M. Harris  
 Ms. Connie Hastert  
 Mr. Larry E. Helber  
 Mr. Timothy C. Herpel  
 Ms. Kristin Holmes  
 Ms. Jenny R. Howard  
 Ms. Liz Howard\*  
 Mr. John Hoxie  
 Mrs. Judith R. Hughes\*  
 Senator Daniel K. Inouye  
 Mrs. Corinne Jonsson  
 Mr. Chester Kaitoku  
 Dr. Donna A.K. Kalauokalani  
 S. Maile Kane  
 Kauai Community College  
 Library  
 Ms. Pauline Kawamata  
 Keku'iapoiwa Learning Center  
 Mrs. Margaret Kiessling  
 Millie Kim

Ms. Judith Kikendall  
 Kona Historical Society  
 Karen K. Kosasa  
 Ms. Dawn K. Krause  
 Ms. Harriet Kuwamoto  
 Ms. Kathryn Ladoulis  
 Ms. Malia Lageman  
 Ms. Lani Maa Lapilio  
 Mrs. Lorna Jeyte  
 Mr. Scott Larson  
 Mr. Robert Lazo, AIA  
 Mr. Michael J. Leong  
 Ms. Delta Lightner  
 Ms. Lisa E. Livingston  
 Mr. Tom Loffman  
 Ms. Jun Look  
 Ms. Anne L. Loquercio  
 Ms. Carol Lovell  
 Ms. Brenda Lowrey  
 Douglas P. Luna, AIA/Architect  
 Mr. & Mrs. David Lung

## Profile Ed Kaneko

*Edwin Kaneko was born one of eleven children to his family from Honalo, Kona, in 1930. As the son of immigrants, Kaneko quickly learned the importance of neighbors helping neighbors. For Japanese immigrants the kumiai (neighborhood association) brought neighbors together to assist each other in good and bad times such as those of illness, death, crop failure, weddings, house raisings or crop harvest and transport. From these childhood traditions Kaneko began a life of community involvement and service.*

*In 1948, Kaneko left the Kona district for the Korean War. After the war he pursued a college education on the mainland and had a thirty-year career as a civil engineer for the Federal Aviation Administration.*

*After his retirement in 1989 Kaneko returned to Kona with his wife Kay and immersed himself in the community. He has been a part of the Kona Historical Society since 1991 when he got involved in the preservation and restoration of the Kona Coffee Living History Farm.*

*Kaneko was instrumental in the preservation and restoration of the historic Donkey Mill Coffee Cooperative ca. 1953. This historic coffee mill was abandoned for many years and stood derelict until its restoration in 2000. He also took a leadership role in the development of the Japanese American National Museum's award winning traveling exhibition: The Kona Coffee Story – Along the Belt Road.*

*From his "small kid days" of community service Kaneko carries on the tradition of kumiai that was so powerful an influence in his life growing up in rural Kona.*

Mrs. William B. Lupton\*  
 Mr. Duncan MacNaughton  
 Ms. Katherine MacNeil  
 Ms. Nancy E. Magraudy  
 Mr. Michael J. Marks\*  
 Mrs. Kathy Martin-Yeager  
 Ms. Marianna Marwell  
 Ms. Betty Matsumura  
 Maui Community College  
 Library  
 Wendie McAllaster  
 Frances M. McClurkin  
 Mr. Martin McMorro  
 Midkiff Learning Center  
 Mr. Jace S. Mikulanec  
 Jay Miyaki  
 Mrs. Susan Horst Mori  
 Bob Mott  
 Ms. Nancy A. Mower  
 Ms. Margaret Murchie  
 Ms. Joyce Nakanelua  
 Ms. Nanette Napoleon  
 Donna B. Nathanson  
 Ms. Martha A. Nelson  
 Miss Diane J. Nielsen\*  
 Ms. Valerie Nishida  
 Mr. Greg Northrop  
 Mrs. Katharine F. Norwood\*  
 Mrs. Mary Louise O'Brien  
 Gary O'Donnell  
 Mr. Michael Ogan  
 Ms. Mary O'Leary  
 Ester Smith O'Toole  
 Mr. Alvin Pauole  
 Janice Pechauer  
 Ms. Dorothy Chambers Phillips  
 Ms. Elizabeth D. Porteus\*  
 Ms. Anne Pulfrey  
 Mrs. Leilani Pyle  
 Ms. Barbara L. Quinlan  
 Mr. Thomas A. Quinlan  
 Mr. U.J. Rainalter, Jr.  
 Robert A. Ramsay  
 Hans Riecke  
 Mr. Walter Ritte  
 Barnes Riznik  
 Ms. Barbara Robeson  
 Peter Ross  
 Mrs. Marian A. Sandelin\*  
 Mr. Scott R.L. Seymour  
 Mr. Donald Shaw  
 Phyllis Shea  
 Ms. Jacqueline Siegel  
 Charlotte M. Sotello  
 Mrs. John H. Southworth\*  
 Mr. H. Howard Stephenson  
 Ms. Dolly M. Strazar  
 Ms. Jane M. Stubenberg  
 C. Takashima  
 Willard A. Thomas  
 Ms. Patricia Thomson  
 Ms. Lyn Turner  
 Ms. Colleen H. Uahinui  
 Ms. Francine Wai  
 Ms. Linda J.H. Warriner  
 Miss Erika L. Webb

Ms. Michelle Weeks  
 Mike Weidenbach  
 Mr. Darrell G. Welch Jr.  
 Jesse C. Wells\*  
 Ms. Cori Weston  
 Mr. John P. Whalen  
 Ms. Meredith Ann Whipple  
 Mr. Burton White  
 Ms. Nancy Wilcox  
 Mrs. Rodney F. Williams  
 Rianna M. Williams  
 Shannon Wilson  
 Windward Community  
 College Library  
 Mr. Adam Wong  
 Mrs. Martha W. Wood  
 Mr. John Wullbrandt  
 Ms. Megan York

# **Senior/Student**

Ms. Lillian Adams\*  
 Jane Christman Albritton  
 Mrs. Meryl M. Andersen\*  
 Ms. Beverly S. Ashford  
 J.G. Astman  
 George E.K. Awai, Jr.  
 Mr. James Baer  
 Virginia Baz  
 Ms. Anna Derby Blackwell  
 Mr. William Bolman  
 Mrs. Jan Schuck Bond  
 Dr. Sarah L. Botsai  
 Ms. Lindy Boyes\*  
 Mrs. Elizabeth S. Boynton  
 Mrs. Jane Lee Boynton  
 June Bradley  
 Ms. Goldie D. Brangman  
 Brigham Young  
 University-Hawaii  
 Ms. Eileen Bull  
 Louis G. Bushnell  
 Mrs. Phoebe Campbell  
 Ms. Carla Caratto  
 Mrs. Mary Caywood  
 Mr. James H. Chaney  
 Helen G. Chapin  
 Ms. Esther Chun  
 Ms. Elizabeth Clark  
 Mrs. Judith Parker Cochran  
 Miss Agnes C. Conrad\*  
 Mazeppa King Costa\*  
 Mrs. Jean Cox  
 LCDR Wilmer H. Cressman  
 USN (Ret)  
 Mrs. Mary Ann K. Crowell  
 Capt. T.J. Davies Jr.  
 Mrs. Barbara Del Piano\*  
 Mrs. Janet Dorrance  
 Ms. Elizabeth Dower  
 Mr. & Mrs. John H. Earle\*  
 Annette N. Ebinger  
 Mrs. Mary T. English\*  
 Dorothy M. Evans\*  
 Dr. Evan C. Evans III  
 Mr. William Fabis  
 Mrs. Dorothy R. Farmer

Ms. Paula S. Faulkner  
 Francis E. Fleck  
 Mrs. Mary Floyd  
 Mr. Reginald P. Gage II  
 Mrs. Gail C. Gammie  
 Mrs. Beatrice Gendel\*  
 Mr. Theodore W. Gibson\*  
 Mr. J.N.S. Gillmar  
 Dr. Nan Marie Greer  
 Mrs. Maylien W. Grosjean\*  
 Mrs. Norma L. Gunther  
 Mrs. Windsor Hackler\*  
 Pleiades G. Hanson  
 Mr. Ted H. Harders\*  
 Mrs. Catherine Casem Harlan  
 Ms. Joan Harper  
 Mr. James V. Harwood  
 Mrs. Clark Hastert\*  
 Hawaii State Library  
 John M. Hayakawa  
 Mr. Carl Hebenstreit  
 Mrs. Louise E. Hallsted Helmer  
 Mrs. Orpha Herrick\*  
 Mr. James Renton Hind  
 Mr. Howard Hiroki  
 Mr. John R. Hofmann Jr.  
 Mr. Alan S. Holzman  
 Dr. Ralph C. Hook\*  
 Miss Irmgard Hormann\*  
 Mr. Wayne Kehau Ingols  
 Ms. Eleanor W. Jacobsen  
 Mrs. Lenore S. Johnson  
 Ms. Lesleigh Jones  
 Mrs. Mary S. Judd  
 Dr. Stuart A. Kahan  
 Mr. Yasuto Kaihara\*  
 Winona Kamai  
 Ms. Karen Kane  
 Ms. Carol Kawananakoa\*  
 Masuo Kino  
 Mrs. Kay Kramer  
 Ms. Karin A. Latham\*  
 Ms. Linda LeGrande  
 Mrs. Ranita LeGrande  
 Mrs. Mary Leineweber\*  
 Mrs. Jane Lipp  
 Mrs. Carol Loose  
 Ms. Shirley M. Ludden  
 Barbara H. Makua  
 Ms. Susan Y. Marcotte  
 Ms. A.L. Mariposa  
 Ms. O. Agnes Martelet  
 Rep. Barbara Marumoto\*  
 Mr. Milton A. Masing  
 Sherwood Maynard  
 Ms. Margaret McAleavey  
 Dr. H. Roy McArdle  
 Ester Waihee McClellan\*  
 Mr. Charles E. McClure  
 Ms. Donna M. McDonnell  
 Ms. Kathleen McDuff  
 Ms. Elizabeth May McHaney  
 Ms. Beverly H. McKeague\*  
 Mr. L. Richard Melcher  
 Mr. Richard J. Meyer  
 Martha W. Monahan

Mr. Richard S. Morris  
 Mr. Lyle Nelson  
 Mrs. Eleanor C. Nordyke\*  
 Mrs. Shirley Nordyke\*  
 Ms. Mayu Ohama  
 Jo Ann. M. Omayas  
 Mrs. Adele K. Ostrem  
 Ms. Janice Parrott  
 Ms. Margaret E. Patterson  
 Mrs. Virginia Pedro  
 Ms. Eleanor I. Pierce  
 Mr. Kenneth J. Pratt  
 Mr. Carl L. Reber  
 Mr. Donald W. Reeser  
 Mrs. Doris Rewick  
 Mrs. Mary Dean Reynolds  
 Eleanor S. Richardson  
 Mr. William S. Richardson  
 Mrs. Barbara K. Robello\*  
 Ms. Violet-Marie Rosehill  
 Mrs. Harriet D. Rotz  
 Mrs. Colleen Ruth  
 Mrs. Marilyn A. Schank  
 Mr. Michael E. Schaub  
 Ms. M. Schwartz  
 Barbara M. Seymour  
 Mr. John S. Silva, Jr.  
 Mr. Frederick Simpich  
 Mr. Lloyd J. Soehren\*  
 Mrs. Patt R. Spencer  
 Mr. James D. Staub  
 Ann Stegmaier\*  
 Mr. Joseph S. Stoddard  
 Mrs. Kinuko Taniguchi  
 Ms. Barbara Thompson\*  
 James P.D. Thropp, Jr.  
 Mrs. Barbara J. Thurston  
 Dr. P. Quentin Tomich\*  
 Ms. Ann R. Townsend  
 University of Hawaii at Hilo  
 Library  
 Mrs. Helen Van Etten  
 Ms. Helen Troy Von Tempsky\*  
 Mrs. Norah E. Walker\*  
 Dr. E.B. Warshauer  
 Mr. Robert T. Watts  
 Ming-Yi Wong  
 Dusty Woodstock  
 Mr. Shozo Yoshizawa  
 Mr. George Yuen  
 Mrs. Margaret Zabriskie\*

#### **Corporate Heritage Leader**

Persis Corporation  
 The Freeman Foundation  
 The Honolulu Advertiser

#### **Corporate Heritage Patron**

Aloha Airlines  
 Coldwell Banker Pacific  
 Properties  
 DFS Hawaii  
 First Hawaiian Bank  
 Kahala Mandarin Oriental  
 Hawaii

Kualoa Ranch & Activity  
 Club, Inc.  
 Outrigger Enterprises, Inc.  
 Servco Foundation  
 The Shidler Family Foundation

#### **Corporate Heritage Benefactor**

Bank of Hawaii  
 Cades Schutte LLP  
 Carlsmith Ball LLP  
 Central Pacific Bank  
 Deloitte & Touche  
 First Insurance Company of  
 Hawaii, Ltd.  
 Flower Farm, Inc.  
 Group 70 International  
 Hawaii Modular Space  
 Hawaiian Airlines, Inc.  
 Hawaiian Electric  
 Company, Inc.  
 K.F. Downtown/American  
 Land Company  
 Kaneohe Ranch Company, Ltd.  
 Mason Architects, Inc.  
 MPM Group  
 Pacific Marine & Supply  
 Co., Ltd.  
 PBR Hawaii  
 PricewaterhouseCoopers LLP  
 R.M. Towill Corporation  
 Spencer Architects, Inc.  
 The Estate of James Campbell  
 Title Guaranty Family of  
 Companies  
 Xerox Corporation

#### **Corporate Heritage Associate**

AC Kobayashi Family  
 Foundation  
 Alexander & Baldwin  
 Belt Collins & Associates  
 Cendant Car Rental Group  
 Gentry Homes, Ltd.  
 Grace Pacific Corporation  
 Hawaiian Cement  
 Island Insurance Company  
 Jhamandas Watumull Fund\*  
 John R. Halligan Charitable  
 Fund  
 Kobayashi Development  
 Group LLC  
 Leo A. Daly Co.  
 Merrill Lynch  
 Monarch Insurance Services  
 RCM Construction Corporation  
 Tanaka of Tokyo  
 Restaurants Ltd.  
 The Gannett Foundation  
 Theo H. Davies Foodservice  
 Group  
 Verizon Hawaii  
 Watanabe, Ing, Kawashima &  
 Komeiji LLP  
 Yokouchi Foundation

#### **Corporate**

24 Hour Fitness  
 Accent on Nails  
 Ala Moana Hotel  
 Alston Hunt Floyd & Ing  
 Architects Hawaii Ltd.  
 Armstrong Builders, Ltd.  
 Armstrong Building  
 Maintenance  
 AT&T Hawaii  
 Bay West  
 Bays Deaver Lung Rose & Baba  
 Becker Communications  
 Bete, Inc.  
 Big Dog Sportswear  
 Bishop Museum  
 Blockbuster Video  
 California Hotel Casino  
 Las Vegas  
 Castle & Cooke Homes  
 Hawaii, Inc.  
 Chez Paul French Restaurant  
 Chuck's Steak House  
 Chung Kun Ai Foundation  
 City Mill Co., Ltd.  
 Clarence Lee Design  
 Communications Pacific, Inc.  
 Cooper Enterprises, Inc.  
 Cultural Surveys Hawaii, Inc.  
 Curves for Women Manoa  
 Cycle City Ltd.  
 Dancing Cat Records  
 Dave & Busters  
 Dave's Ice Cream  
 David Paul's Lahaina Grill  
 Days of Aloha  
 Deico Products  
 Delano & Seymour's  
 Hawaiian House  
 Detor & Williams, CPA's  
 Diamond Head Grill at W  
 Honolulu Hotel  
 Diamond Head Theatre  
 Doris Duke Foundation  
 for Islamic Art  
 Duck Tours  
 Dukes' Waikiki Restaurant &  
 Barefoot Bar  
 Elite Limousine  
 Estate Vineyards & Winery  
 Ethelreda  
 Ezio's International  
 Hairstyles, Inc.  
 Festival Companies  
 Fire it Up  
 Four Seasons Resort Hualalai  
 Friends of Iolani Palace  
 Glassware Decorators of  
 Hawaii, Ltd.  
 Hale Ho'okipa Bed & Breakfast  
 Hale Ku'ai Cooperative  
 Halekulani Hotel  
 Hana Hou (Keehu Corp.)  
 Hart-Felt Massage &  
 Day Spa, LLC  
 Hassman Caldarone Design

Hastings, Conboy, Braig & Assoc. Ltd.	Louis Vuitton Hawaii, Inc.	Riches Kahala
Hawaii Medical Service Association	Makaha Resort	Robyn Buntin of Honolulu
Hawaii Opera Theatre	Manoa Valley Theatre	Royal Contracting Co., Ltd.
Hawaii Preparatory Academy	Marsha Nadalin Salon	Royal Hawaiian Hotel
Hawaii Public Radio	Martin & MacArthur	Roy's West Maui Restaurants
Hawaiian Electric Industries, Inc.	Mary Catherine's Bakery	Sabrina's Restaurant
Hawaiian Graphics	Mason Architects, Inc.	Sam Choy's Diamond Head Restaurant
Hawaiian Historical Society	Matters of Taste	SandSea Vacation Homes
Hawaiian Islands Stamp & Coin	Maui Divers of Hawaii	Schuler Homes, Inc.
Hawaiian Mamaki Tea Plantation, Inc.	Mauna Kea Beach/Hapuna Prince Hotel	Segway Experience of Honolulu
Hawaiian Waters Adventure Park	Mauna Lani Resort, Inc.	Sen Plex Corp.
Heaven on Earth	MC&A, Inc.	Seven-Eleven Hawaii
Hilo Hattie-The Store of Hawai'i	McDonald's Restaurants of Hawaii	Shell & Jewelry Creations by Sam
Hilton Hawaiian Village	Mission Houses Museum	Sheraton Keauhou Bay Resort & Spa
Honolulu Academy of Arts	Mona Lisa Designs	Sheraton Moana/Kyo-ya Co. Ltd.
Honolulu Symphony	Moutarde Cafe/Kahala Caterers, Inc.	Shipman House Bed & Breakfast
Honolulu Zoological Society	Murphy's Bar & Grill	Sig Zane Designs
Honsador Lumber Corporation	Mutual Publishing, LLC	Silver Eagle Distributors
Hungry Hawaiian	Na Mea Hawai'i	Sony Open in Hawaii/Friends of Hawaii
Hyatt Regency Kauai	Na Pali Explorer	Southern Wine & Spirits
Ice Palace	Nake'u Awai Designs	Spencer Architects, Inc.
Indigo Eurasian Cuisine	National Trust/Western Region	Tea at 1024
IONA Contemporary Dance Theatre	Native Books, Inc.	The Contemporary Museum
Island Art Galleries	Neiman Marcus	Glassware Decorators of Hawaii
J Salon	Nohea Gallery	Lahaina Restoration Foundation
Jamba Juice	Nordic Construction, Ltd.	The MacNaughton Group
Jameson's By The Sea	North Shore Catamaran Charters	The Worth Collection
John Child & Company, Inc.	Oceanic Time Warner Cable Office Depot	Tom Moffatt Productions
Jungle River Mini Golf Village	Old Wailuku Inn, Ltd.	Tori Richard, Ltd.
Kaanapali Beach Hotel	Ostrander & Chu, Inc.	Turtle Bay Resort
Ka'anapali Golf Courses	Pacific Harley-Davidson	Twogood Kayaks Hawaii, Inc.
KAJ's Products	Pacific Islands Institute, Ltd.	Ultimate Organization
Kamehameha Schools	Padovani's Restaurant Wine & Bar	Under a Hula Moon
Kazi Foods / Burger King	Pahala Plantation Cottages	United Laundry Services
Keiki Photography	Paradise Cruise, Ltd.	University of Hawaii Press
Kilauea Lodge	Patagonia	University of Phoenix
King & Neel, Inc.	Paul Brown Salon & Day Spa	Victoria Ward Centers
Kleenco Corporation	Pearlridge Center	W Honolulu Hotel
Kumu Kahua Theater	Pegge Hopper Gallery	Waikiki Aquarium
Kwilts n' Koa	Photon Studio	Waimea Plantation Cottages
Lauhala Trading Company	Pioneer Inn	Wallace Theaters
Lisa Rose Doll House & Tea Room	Pizza Hut	Watermark Publishing
The Lodge at Koele	Princess Kaiulani Fashions	Barbara & Allen Wilcox Foundation
	Renaissance Ilikai Waikiki Hotel	YWCA of O'ahu

We have made every effort to ensure an accurate and complete listing of our valued members and supporters. If we have misspelled or omitted any name, please let us know so that we can make the corrections.

**TRUSTEE EMERITUS**

Mrs. Allyn Cole, Jr.

**EXECUTIVE DIRECTOR**

David Scott

**OPERATIONS MANAGER**

Lisa Oshiro

**MEMBERSHIP/MARKETING DIRECTOR**

Patty Young-Kingsbury

**MEMBERSHIP SECRETARY**

Barbara Makua

**OFFICE VOLUNTEERS**

Loretta Abe, Mayu Ohama, Erica Steverson

**CONSULTANTS**

Detor & Williams, CPA, Auditor

Lori Yamada

**GRAPHICS**

Charles Taketa Graphic Design, Inc.

**Historic Hawai'i Foundation**  
680 Iwilei Road, Suite 690  
Honolulu, Hawai'i 96817

**HISTORIC  
HAWAII  
FOUNDATION**

Nonprofit  
Organization  
U.S. Postage  
**PAID**  
Honolulu, HI  
Permit No. 1301