

MARY LEINWEBER

## Art Imitates Sites.

Historic sites, that is. Historic Hawai'i Foundation's 2003 annual report features the work of several local artists and their interpretation of Hawai'i's historic sites captured in pen and ink, pastel and various other media. Fortunately, several of these buildings still exist and sadly, many have been lost. However, the images of these landmarks often conjure up fond memories and the buildings themselves forever remain a piece of our history.

*Mahalo* to the following artists:

- **Carter Black:** front cover - Washington Place; page 7 - St. Benedict's, Painted Church  
Website: [www.carterblack.net](http://www.carterblack.net)
- **Pauahi W. Clark:** page 11 - St. Patrick's Church  
Tel: 235-3119
- **Margo Goodwill:** page 19 - Haleiwa Bridge  
Website: [www.mgoodwill.com](http://www.mgoodwill.com)
- **Mary Leineweber:** inside front cover - Waimea Hawaiian Church, Kaua'i;  
inside back cover - Jodo Mission, Lahaina, Maui  
Tel: 254-4697
- **Rosalie Prussing:** page 16 - YMCA of Oahu's Laniakea Center;  
back cover - Waioli Hui'ia Church  
Tel: 395-8114
- **Doug Young:** page 3 - Honolulu Stadium; page 5 - O'ahu Market;  
page 9 - Hawai'i Theatre  
Website: [www.younghawaii.com](http://www.younghawaii.com)

## HISTORIC HAWAI'I FOUNDATION MISSION STATEMENT

**T**he purpose of the foundation shall be to preserve and encourage the preservation of historic buildings, objects, communities, and sites relating to the history of Hawai'i; to promote awareness of and respect for all that is historically significant and architecturally distinctive in our State; and through these efforts, to keep alive and intact for the enrichment of present and future generations the inherent beauty of the Hawaiian Islands and its unique historic role in the development of the Pacific Basin.



## President's Report

Looking back at the past year's achievements reminds me that our success is built on the struggle and hard work of our members, staff, trustees and volunteers as well as those individual and corporate donors who are committed to our mission. I want to express my appreciation to all of them and each of you who have helped us fulfill that mission.

During the past year we've moved forward in establishing our partnership with the Freeman Foundation, allowing us to expand our preservation grant program in Hawai'i. This association with the Freeman Foundation, has allowed us to fulfill an important goal of directly funding worthwhile preservation projects in Hawai'i. Kaumakapili Church was one such recipient of a Freeman Grant, enabling them to restore the Church's stained glass windows. We look forward to continuing this partnership in the years ahead. We're thankful for their generosity and interest in our community.

Past and present Trustees of Historic Hawai'i Foundation have continued their efforts to strengthen our financial condition and I'm pleased to report we are financially sound. We've made great progress in establishing an ongoing endowment program to fund important future projects. The Bretzlaff Foundation Endowment and the generosity of Mrs. Angeline Walther, who left HHF a bequest from her estate, have increased our financial security. Over the next few years, one of our major objectives is to build this endowment and use it to support important preservation projects statewide. If you would like to make a lasting contribution to historic preservation we encourage you to consider making such a provision in your will or trust.

A key focus in the coming year is to improve our effectiveness by expanding our board committee structure. With much of the grass roots preservation activity happening on the Neighbor Islands, we need to make certain our organization is structured accordingly. The Board of Trustees is implementing our strategic plan and is focusing on creating a new



*President John Lyles, far right, at the Winter Benefit honoring Oz Stender as Kama'āina of the Year, with Executive Director, David Scott, Ku'ulei and Oz Stender.*



statewide governance committee to concentrate on a collaborative approach to managing statewide preservation issues.

Following last year's renovation of our accounting system, we have implemented new donor and membership management software. Our member database and mailing list has been updated and verified. With this foundation, we are ready to move ahead with our membership development program in the coming year.

The Board of Trustees has been working for several years to locate a new home for our staff. This effort will continue. We'd like to find a location that represents a good example of historic adaptive re-use so we can demonstrate the importance of this approach to historic preservation. We are investigating one such opportunity now. If you have suggestions please let us know.

Argonauta continues as a project of the Argonauta Committee. We are continuing to use our 501-C3 status to receive donations and pay for work performed. We have hired a construction manager to assist in putting together reliable costs to complete reassembly of the Lindbergh House. We are also involved in discussions with the National Park Service and the Argonauta Committee Chair about taking a more active role in managing the project.

Historic Hawai'i's strength is in its membership and Board of Trustees. I am most grateful for your support this year and look forward to working with you to achieve our goals in the coming year.

Mahalo,

John Lyles

# Executive Director's Report

This annual report covers my seventh year as Executive Director of Historic Hawai'i Foundation and we continue to become a stronger and more effective statewide historic preservation organization each year. I am proud and honored to serve as the director of Hawai'i's only statewide historic preservation organization. I want to be the best Executive Director Historic Hawai'i Foundation has ever had.

My promise to you is that I will continue to grow and reinvent myself to support the mission of Historic Hawai'i Foundation. I am fortunate in having wonderful, hard working staff who believe as I do in the mission of Historic Hawai'i Foundation. We are also fortunate in having a dedicated Board of Trustees who support and advocate for the Foundation.

So what is the vision for HHF and historic preservation in Hawai'i? The somewhat counter-intuitive fact is that historic preservation is not about the past, but rather about the future. Only by knowing where we are from can we choose a path to where we want to go. Historic preservation is about examining those elements that reflect the unique characteristic of a place and how to investigate and celebrate them. It is a search for, then preserving what is authentic. It adds importantly to "quality of life," an overworked but valid concept. It is a healthy process that brings our diverse peoples together and helps to sustain our sense of community.

I would like to personally thank every one of you who support HHF and allow us to try to help make Hawai'i a great place to live and work. By making Hawai'i a great place to live we also make it a great "authentic" place to visit, and that will help sustain the economy of our great island state.

Mahalo,



David Scott



PHOTO BY RANDY T. FUJIMORI

David Scott presented Bill Chapman with a Historic Preservation Commendation.





DOUG YOUNG

## 2003 Year in Review

We continue to work in partnership with the Freeman Foundation in funding preservation projects. The Freeman Foundation is interested in awarding "bricks and mortar" preservation grants given in Hawai'i and using Historic Hawai'i Foundation to administer those grants. In 2003 they awarded \$47,500 for the restoration of Kaumakapili Church's historic stained glass window. They have also granted \$10,000 to the Society for Kona's Education and Arts (SKEA) for the completion of the adaptive reuse of an old Japanese Language School into a community arts center.

An earlier Freeman grant was \$50,000 for the stabilization and restoration of Haili Church in Hilo. We awarded the final \$25,000 upon the completion of the exterior restoration.

Our annual meeting was held along with our annual historic preservation awards presentation at "College Hill," the newly renovated home of the President of the University of Hawai'i.

Our annual historic preservation conference was held on Kaua'i on May 15 and 16. The theme was "What's Hawai'i's Story and How Do We Preserve and Perpetuate It?" The

keynote speaker was Darin Dinsmore, the Director of Town Planning Services of the Sierra Business Council, who discussed "Economic Development as a Tool for Historic Preservation." The conference was videotaped and will be shown on 'Olelo and other public television venues. We feel it is important to demonstrate our statewide mission by having our annual conference on a neighbor island every other year.

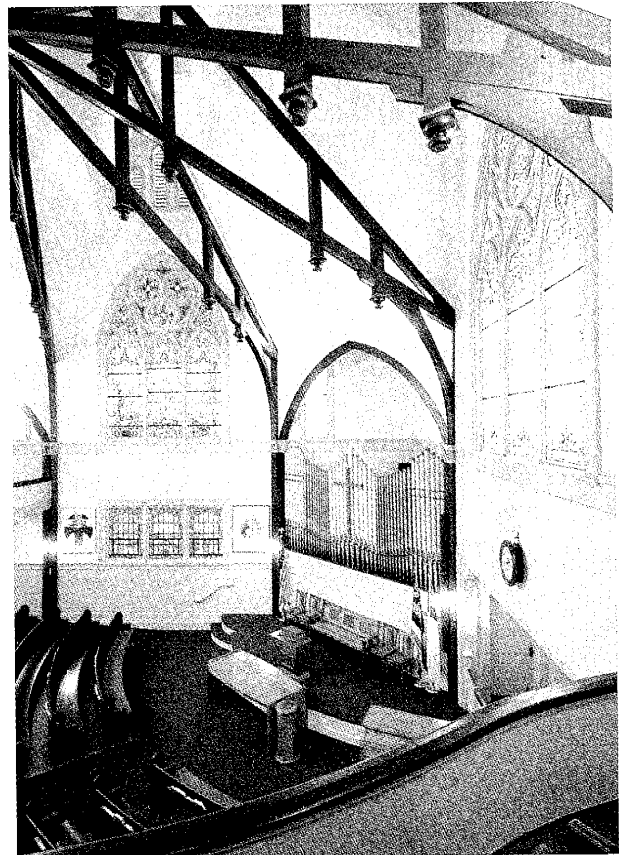


PHOTO BY DAVID FRANZEN

*Kaumakapili Church was a recipient of a Freeman Foundation grant.*



PHOTO BY RANDY T. FUJIMORI

*Trustee Mary Cooke is flanked by Preservation Award recipients Barbara Robeson and Carol Wilcox.*



We presented 11 Historic Preservation Honor Awards in 2003 to individuals, projects and organizations for historic preservation achievements in a number of communities. Receiving awards were:

- Bradley Adams and Megan York for their work on their home on O'ahu.
- College Hill, residence of the University of Hawai'i president, for renovations to preserve the house and adapt it for use for University functions.
- Mālama o Mānoa for their work on the creation of the first thematic historic district in Mānoa.
- Queen Lili'uokalani Children's Center and community volunteers for the caretaker activities at Lo'i Kalo Mini Park in Kalihi.
- Shangri La for the preservation and adaptive reuse of Doris Duke's residence for public tours.
- Art Angel Project on Kaua'i for the restoration of the religious frescoes of Jean Charlot, Juliette May Fraser and Tseng Yu Ho.
- Hanapēpē Pool Hall Project on Kaua'i for the reconstruction and adaptive reuse of a 1926 historic wooden building.
- Na'ālehu Theatre on the Big Island for the restoration and adaptive reuse of the 1940 theater for community activities.



CARTER BLACK



*The before and after photos of Hanapēpē Pool Hall proved it was deserving of a Preservation Honor Award.*

- Project Loko I'a Kahinapōhaku Fishpond on Moloka'i and Walter Ritte, the Environmental Protection Agency and the Pacific American Foundation for their efforts in fishpond restoration.
- A Preservation Commendation Award went to the Hawai'i Preservation Field School at the University of Hawai'i at Manoa for their ongoing educational efforts.
- Preservation Certificates went to Carol Wilcox and Barbara Robeson of Kaua'i for their long- standing dedication to the Hanalei-Ha'ena Roads Project and their work on the preservation of the Hanalei Bridge.

More than 1,200 school children participated in our annual "Keiki Color a Historic Building" contest. We use this contest to teach children about historic buildings and historic preservation, using presentations in the classroom and the development of materials for classroom activities.



PHOTO BY RANDY T. FUJIMORI

*Representatives for Project Loko I'a Kahinapōhaku Fishpond proudly display their Historic Preservation Honor Award.*



DOUG YOUNG

We continue to award historic preservation planning grants through our Preservation Services Fund (PSF) grant program with the National Trust for Historic Preservation. We want the PSF program to continue after the funding that we supplied to the National Trust in 1997 runs out, so we are working to establish an endowment for the fund.

We again cosponsored with the University of Hawai'i at Mānoa the annual Experts at the Palace Lecture Series. The focus was topics with military connections such as a talk by historian John deVirgilio on "Accounts of Japanese Pilots" during the attack on Pearl Harbor. Executive Director David Scott gave a talk on the Preservation Opportunities and Challenges on Ford Island and Alan Palmer, Executive Director of the Military Aviation Museum of the Pacific, talked about that exciting project.

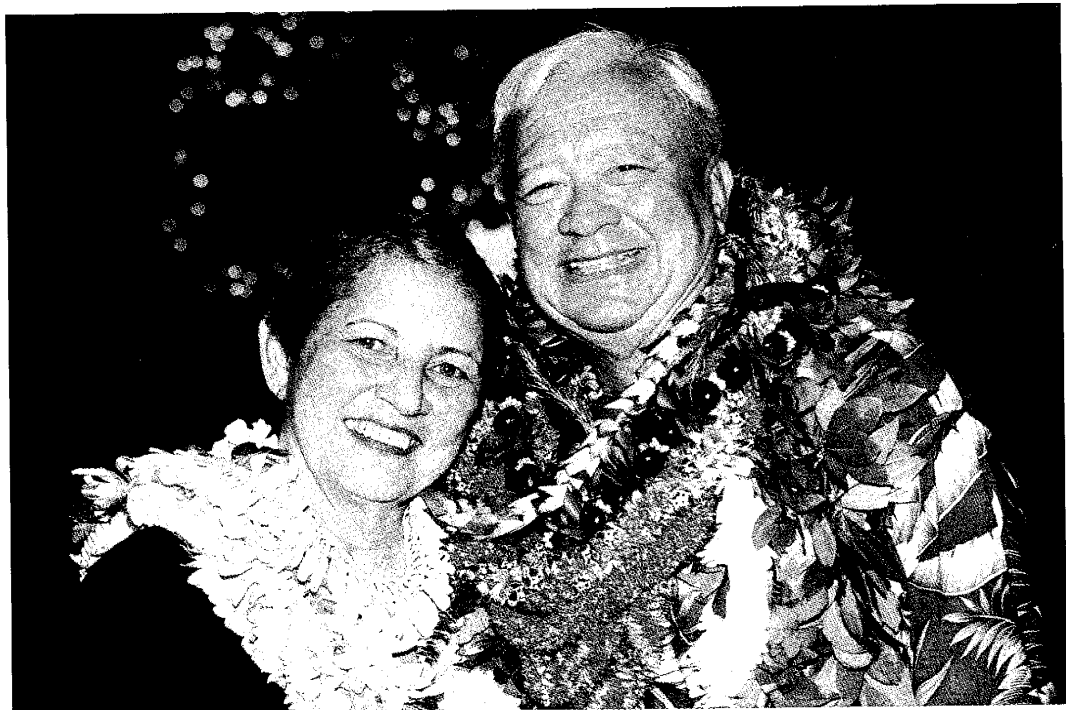
We continue to work with the armed services on their Section 106 requirements which mandate that they review and mitigate any adverse effects their projects might have on historic resources on bases in Hawai'i. After two years of negotiation we hammered out a programmatic agreement (PA) with the Navy that will streamline its required review process. We continue to consult with the Navy on its development plans for Ford Island to see that the National Historic Landmark is not compromised by inappropriate activities.

In September the Kahala Mandarin Oriental Hotel hosted a reception of our special Heritage Associate Members.

In December we held our annual Winter Benefit to raise operating funds, honoring Oz Stender as our Kama'āina of the Year. It was one of our most successful Winter Benefits; we raised more than \$200,000.

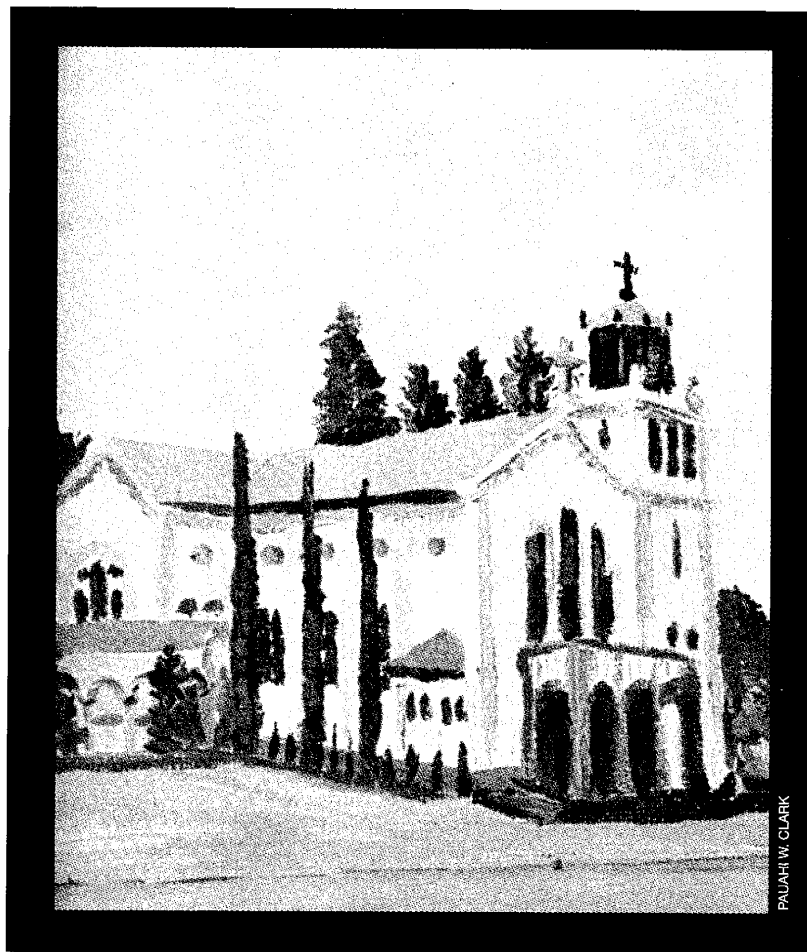
Our long-time Membership Director Keri Sison resigned to pursue other opportunities and was replaced by Patty Young-Kingsbury who will expand the position to cover membership and marketing. Keri still helps out when she can and we appreciate her many years of hard work for the Foundation.

We look forward to a productive 2004 and appreciate the continued support of our members.



*Kama'āina of the Year, Oz Stender and his wife Ku'ulei.*

PHOTO BY RANDY T. FUJIMORI



## Real Property Preservation Committee Report

Frank Brandt, Jackie Mahi Erickson, Gary Gill, Millie Kim, Carolyn Larson, John Lyles, Tom Quinlan, David Scott, Barbara Shideler, John Whalen, and Ann Yoklavich served on the Real Property Committee this year under the leadership of John Lyles until August when Carolyn Larson became the committee chair. The committee held a number of meetings to formulate the following purposes and goals:

### **Statewide Inventory of Historical Sites**

The committee explored ways to encourage expansion and improved usefulness of existing statewide inventories/databases of historical sites. Tonia Moy from the SHPO Historic Structures Division, and Eric Komori, from the SHPO Archaeology Division presented overviews of historical sites databases currently in use in these agencies. The goal is to facilitate access to information about Hawai'i's historic sites in order to increase consideration of these resources in planning, legislation and preservation efforts.

### **Sugar Heritage Initiative**

The committee worked on strategies to improve the preservation of our sugar heritage. As Hawai'i's sugar cane era comes to a close, now is the time to document the story of sugar in Hawai'i and preserve tangible reminders of the important role it has played in the State's history. Bob Hughes briefed the committee on his research on Hawai'i's sugar mills.



*The Art Angel Project, which received a Preservation Honor Award for conservation of its frescos, enlisted the expertise of Olga Urminska.*

### **Legislation Supporting Historic Preservation**

Gary Gill heads up the committee's efforts to improve historic preservation in Hawai'i through better legislation. The following items are currently on our legislative agenda:

- Reintroducing a historic commercial property tax reduction bill for the City and County of Honolulu. This measure would encourage preservation and renovation of historic commercial structures on O'ahu.
- Advocating State adoption of flexible design guidelines for scenic/historic roads. Such guidelines, which are in use in other states, would help Hawai'i keep the character of historic and scenic roads intact while addressing State Department of Transportation concerns.
- Developing an "early warning" process before approving demolition contracts. To improve the opportunity for consideration of moving or reusing historical structures.

### **Corridors/Districts/Heritage Areas**

The value of individual historical assets is vastly increased when they are preserved within an historical context. This is achieved through the identification and preservation of historical corridors, districts and heritage areas. The committee worked on how to identify the unique characteristics of such areas and preserve them.

### **Individual Properties of Concern/Opportunity**

The Committee continued to solicit help from members and the public in identifying historic homes and privately-owned historic sites that are in peril from neglect or re-development. We offer our expertise and Historic Hawai'i Foundation support in saving such landmarks.

### **Freeman Foundation Grants**

The committee provided suggested potential recipients and properties to be considered for preservation funds from the Freeman Foundation.



# Membership Report: 2003 Highlights

## **Heritage Associates Reception**

Heritage Associate members and friends gathered at the annual Heritage Associates reception on September 19, 2003. Mahalo to our gracious host, Jan Goessing, general manager, and the Kahala Mandarin Oriental Hawai'i who put together a wonderful event.

## **Keiki Coloring Contest**

The Kahuku Sugar Mill, Ali'iolani Hale, and the St. Philomena Church in Kalaupapa were the three buildings featured in the 2003 contest. More than 1,000 entries were received statewide from children ages 2 to 12. Eighteen winners were selected and attended the awards ceremony at the Bishop Museum. We are grateful to the Verizon Foundation for their major grant support for this project and a big mahalo to the corporate sponsors who donated prizes and contest supplies.



*Winners of the 9th Annual Keiki "Color a Historic Building" Contest were presented their awards at the Bishop Museum on May 11, 2003.*

## **Annual Meeting at College Hill**

University of Hawai'i President and Mrs. Evan Dobelle graciously opened and invited Historic Hawai'i Foundation to hold its annual meeting on May 7 in their home at College Hill.

## **New to Historic Hawai'i Foundation**

Patty Young-Kingsbury became the new Membership/Marketing Director as of January 2004. Patty brings with her years of experience from working in the public and private business sectors as well as knowledge of non-profit organizations.

## **Looking ahead in 2004:**

Historic Hawai'i Foundation has an exciting year planned. It will involve upgrading our computer system, increasing the number of tours and events, conducting membership drives, expanding the web site, encouraging members to accept paperless communication, expanding community and tourist awareness, increasing media coverage and much, much more!

# Financial Information

## STATEMENT OF ASSETS, LIABILITIES AND NET ASSETS

As of December 31, 2003

<b>CURRENT ASSETS</b>	
Cash (including interest-bearing accounts)	\$ 221,445
Investment – unrestricted	240,313
Pledges receivable – current	18,059
Grant receivable	5,000
Prepaid expenses	2,244
Total current assets	<u>487,061</u>

<b>NONCURRENT ASSETS</b>	185,000
Investment – restricted	–
Pledges receivable – noncurrent	3,184
Office furniture and equipment – net	75
Security deposit	188,259
Total noncurrent assets	<u>188,259</u>

**TOTAL ASSETS** \$ 675,320

### LIABILITIES AND NET ASSETS

<b>CURRENT LIABILITIES</b>	\$ 35,251
Accounts payable	3,858
Accrued liabilities	39,109
Total current liabilities	<u>39,109</u>

<b>NET ASSETS</b>	323,192
Unrestricted	112,574
Temporarily restricted	200,445
Permanently restricted	636,211
Total net assets	<u>\$ 675,320</u>

**TOTAL LIABILITIES AND NET ASSETS** \$ 675,320

## STATEMENT OF SUPPORT, REVENUE AND EXPENSES

For the Year Ended December 31, 2003

### CHANGES IN UNRESTRICTED NET ASSETS

Revenue and support	\$ 281,743
Net assets released from temporary restrictions	155,164
Fundraising	111,837
Membership	79,408
Donated property and facility	75,655
Other contributions	10,204
Preservation contributions	2,285
Investment income (loss) and other income	716,296
Total revenue and support	<u>716,296</u>
Expenses	270,174
Grant expenses	131,439
Fundraising costs	114,971
Personnel and related costs	63,533
Professional fees	38,413
Office and administrative	17,501
Preservation program costs	13,023
Lease rent	4,849
Conferences and travel	653,903
Total expenses	<u>62,393</u>
Increase in unrestricted net assets	<u>62,393</u>

<b>CHANGES IN TEMPORARILY RESTRICTED NET ASSETS</b>	268,167
Temporarily restricted contributions	(281,743)
Net assets released from temporary restrictions	(13,576)
Increase in temporarily restricted net assets	<u>(13,576)</u>

<b>CHANGES IN PERMANENTLY RESTRICTED NET ASSETS</b>	5,025
Permanently restricted contributions	5,025
Increase in permanently restricted net assets	<u>53,842</u>

**INCREASE IN NET ASSETS** 582,369

**NET ASSETS – Beginning of year** \$ 636,211

**NET ASSETS – End of year** \$ 636,211

**STATEMENT OF CASH FLOW**  
For the Year Ended December 31, 2003

**CASH FLOWS FROM OPERATING ACTIVITIES**

Increase in net assets	\$ 53,842
Adjustments to reconcile increase in net assets to net cash provided by operating activities:	
Unrealized (gains) losses from investment	(33,740)
Realized losses from sales of investments	31,124
Depreciation	1,259
(Increase) decrease in:	
Pledges receivable	87,445
Grant receivable	(5,000)
Prepaid expenses	(218)
Increase (decrease) in:	
Accounts payable	19,024
Accrued liabilities	(351)
Net cash provided by operating activities	<u>153,385</u>

**CASH FLOWS FROM INVESTING ACTIVITIES**

Sales of investments	215,374
Purchases of investments	(284,806)
Purchases of office furniture and equipment	(1,148)
Net cash used by investing activities	<u>(70,580)</u>

**NET INCREASE IN CASH** 82,805

**CASH – Beginning of year** 138,640

**CASH – End of year** \$ 221,445

**DETAIL OF NET ASSETS**

At December 31, 2003 temporarily restricted net assets consisted of the following:

Unrestricted net assets	\$ <u>323,192</u>
Net assets temporarily restricted for:	
Argonauta Project	\$ 5,168
Haili Church	82,500
Preservation Fund	19,363
Hui Aloha Church	<u>5,543</u>
Total temporarily restricted net assets	<u>\$ 112,574</u>
Net assets permanently restricted for:	
Bretzlaff Foundation Endowment	\$ 185,000
Historic Hawaii Foundation Endowment	<u>15,445</u>
Total permanently restricted net assets	<u>\$ 200,445</u>
Total Net Assets	<u><u>\$ 636,211</u></u>

Net assets are temporarily restricted for the Argonauta Project (to preserve the Charles and Anne Morrow Lindbergh home in Maui), the Haili Church (to restore and preserve the Haili Church in Hilo), the Preservation Fund (for historic preservation in Hawaii), and the Hui Aloha Church (for materials to preserve the Church). Net assets are permanently restricted for the Bretzlaff Foundation and Historic Hawai'i Foundation Endowments (both are for historic preservation activities in Hawai'i). Certain donors have made pledges to the Foundation for various projects. Such contributions and distributions are recognized when received on the modified cash basis.

The complete audited financial statements, prepared for Historic Hawai'i Foundation by Detor & Williams, may be obtained by calling the Foundation office at (808)523-2900.

# Boards and Committees

## BOARD OF TRUSTEES

John Lyles, president  
Mike Fisch, past president

C. Scott Bradley  
Margery Bronster  
William Y. Brown  
Vicky Cayetano  
Corinne Ching  
Pam W. Dohrman  
Lloyd Fujie  
Gary L. Gifford  
Patricia Godfrey  
Jan D. Goessing  
Loriann Gordon  
Frank A. Haas  
Millicent M. Y. H. Kim  
Carolyn Larson  
Jeffrey M. C. Lum  
Jackie Mahi Erickson  
Easton Manson  
Eric Masutomi  
Lurline Wailana McGregor

Sharon Narimatsu  
Jeffrey Portnoy  
Thomas Quinlan  
Garrett F. Saikley

## ADVISORS

Lani Ma'a Lapilio  
Col. David Shanahan

## EXECUTIVE COMMITTEE

John Lyles, president  
Michael T. Pfeffer, first vice president  
Greg Marshall, second vice president  
Mary M. Cooke, secretary  
Mike Fisch, treasurer  
Peter Apo, at large  
Cheryl Ka'uhane Lupenui, at large

## PRESERVATION HONOR AWARDS COMMITTEE

Dennis Alkire  
Sheree Chase  
Frank Haines

Mark Hastert  
Mike Leidemann  
David Scott  
Lori Yamada

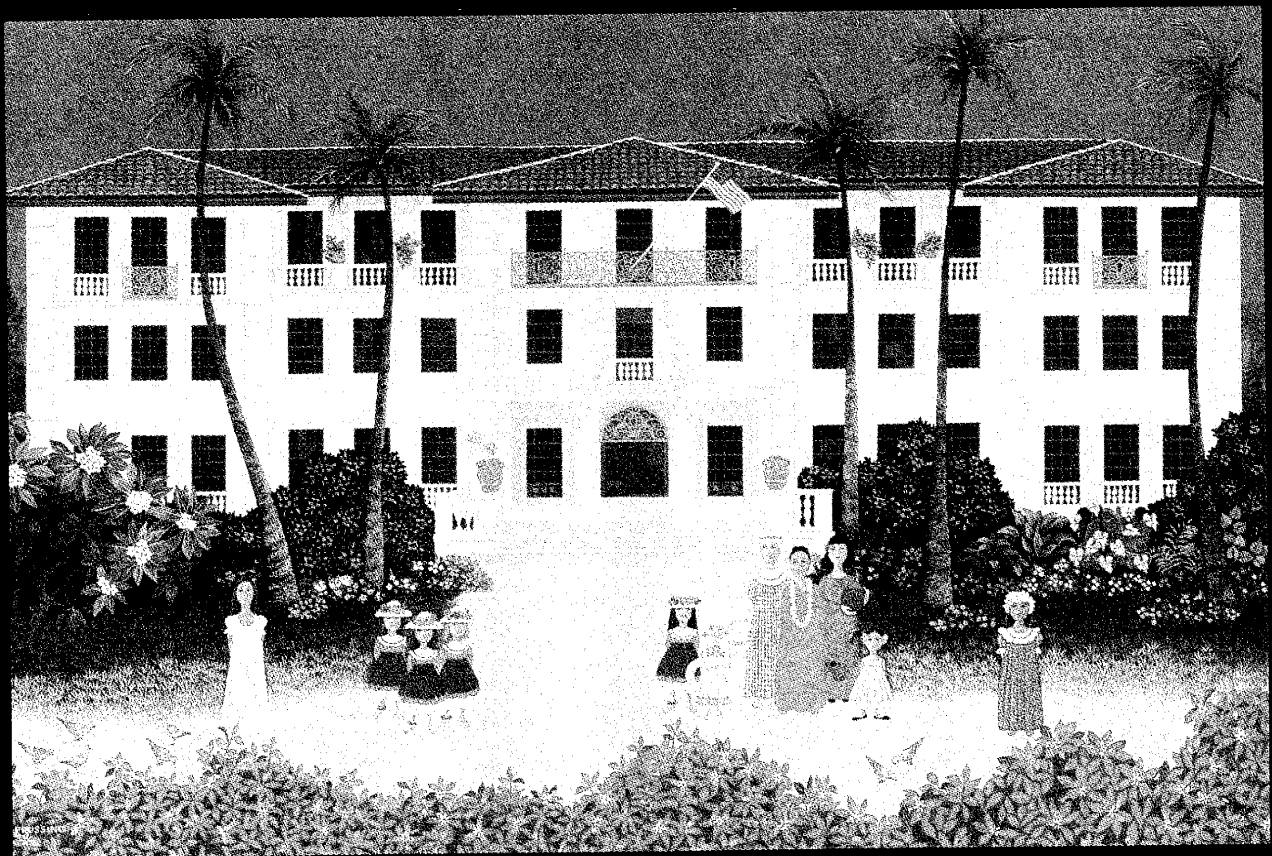
## EDITORIAL BOARD

Nancy Bannick  
Helen Cole  
Agnes Conrad

## REAL PROPERTIES

## PRESERVATION COMMITTEE

Carolyn Larson, chair  
Frank Brandt  
Gary Gill  
Millicent Kim  
John Lyles  
Jackie Mahi Erickson  
Thomas Quinlan  
David Scott  
Barbara Shideler  
John Whalen  
Ann Yoklavich



ROSALIE PRUSSING

# 2003 Historic Hawai'i Members

Indicates Charter Member\*

## INDIVIDUAL HERITAGE LEADER

Buck & Doreen Freeman

## INDIVIDUAL HERITAGE PATRON

Mr. Robert J. Pfeiffer  
Mr. and Mrs. Conrad G. Conrad III  
Easton & Nedra Manson  
Marchesa Kapiolani K. Marignoli  
Sharon & Thurston Twigg-Smith\*

## INDIVIDUAL HERITAGE BENEFACTOR

Miss Nancy Bannick\*  
Samuel A. & Mary M. Cooke\*  
Ms. Patricia Godfrey  
Matt & Malia Megorden  
Mr. James Shingle\*  
Mr. Oswald Stender  
R. Dwayne Steele  
Col. And Mrs. W.G. Van Allen\*

## INDIVIDUAL HERITAGE ASSOCIATE

Mr. Douglas D. Abbey  
Ms. Margery Bronster  
Mr. Robert Carpenter & Dr. Garrett Saikley  
Dr. Ann B. Catts\*  
Mr. Peter G. Drewlin\* & Mr. Charles E. Higa  
Karl and Megumi Essig  
Mr. and Mrs. Dean A. Eyre Jr.\*  
Michael and Nancy Fisch  
Mr. and Mrs. Robert Hastings  
Ron and Sanne Higgins  
Mr. and Mrs. Oliver Hutaff Jr.  
Mrs. Garfield King  
Mr. and Mrs. Benjamin L. Marx\*  
Mr. and Mrs. George Mason  
Mr. and Mrs. Ralph Portmore  
Mr. David Scott  
Mrs. Barbara B. Tilley

## PRESERVATION SPONSOR

Nancy G. Backes  
Mrs. Edith S. Cooke\*  
Mr. and Mrs. Lloyd Fujie  
Mr. and Mrs. James W. Gowney  
Mrs. Dealey Herndon  
Melvin and Nancy Kaneshige  
Matt & Malia Megorden  
Bobbie & John L. Nau, III  
Col. and Mrs. W. G. Van Allen

## PRESERVATION SUPPORTER

Scott & Lisa Bradley  
Mr. and Mrs. Henry Eng\*  
Mr. and Mrs. James F. Gary\*  
Girl Scout Council of Hawaii  
Mr. and Mrs. Holbrook Goodale  
Mr. & Mrs. Sherwood R. Greenwell\*  
Ms. Christina Kemmer  
Leo A. Daly Company  
Mrs. Margo Morgan\*  
Jeffrey Portnoy  
Mr. & Mrs. Wayne James Rapozo  
Dr. Carol S. Sakata, FAIA  
Mrs. Allen M. Stack\*  
Mrs. Allen C. Wilcox, Jr.

## PRESERVATION PARTNER

Mr. and Mrs. Albert R. Abramson  
Steven C. Ai  
Peter K. Apo  
Mr. George R. Ariyoshi\*  
Anne K. Baldwin  
Mr. John Baldwin  
Mr. and Mrs. Clinton B. Basler  
John and Maile Bay  
Mr. A. Bernard Bays

Mary and Gordon Beaton  
Mr. and Mrs. James A. Bier  
Carter Black  
Dr. Donald A. Blackford  
Mr. David Boak  
Mr. Alan Lowrey Brown  
Mr. Kenneth F. Brown  
Mr. William Brown  
Mrs. Zadoc W. Brown\*  
Mr. and Mrs. H. William Burgess  
Mrs. Reynolds G. Burkland\*  
Mrs. Margaret M. Cameron  
Catherine A. Campbell  
Mr. Paul F. Campbell  
Edwin L. Carter  
Mr. Daniel K. M. Chang  
Mr. David Cheever  
Ms. Kaili Chun  
Mrs. Bernard A. Clarey\*  
Mr. and Mrs. Richard Clifton  
Ms. Mazeppa K. Costa\*  
Dr. Paul Dahlquist  
Mr. and Mrs. C. F. Damon, Jr.  
Colonel and Mrs. Wales S. Dixon  
Mr. and Mrs. Mike Durant  
Helen Felsing  
Mrs. Linda Fernandez  
Jim and Joan Fleming  
Ms. Mary Jo Freshley\*  
Dr. and Mrs. Norman Goldstein\*  
Ms. Margo Goodwill  
Mr. Ralph Gray  
Mrs. Masuye S. Hew  
Al Hoffman  
Tamara and Robert Horcajo  
Mr. Bruce G. Jackson  
Mrs. Lilli L. Jacobson  
Hon. and Mrs. Alan C. Kay\*  
Mr. and Mrs. Robert D. Kelce  
Elisabeth Knoke  
Mrs. Virginia D. Koch\*  
Dr. and Mrs. Thomas Kosasa  
Lahaina Restoration Foundation  
Dr. Gerrit R. Ludwig\*  
Mrs. Cynthia H. Marnie  
Lurline W. McGregor  
Mr. John Monnett  
Mrs. Janice K. Nam  
Mrs. Sharon Narimatsu  
Mr. Stephen Nash  
National Trust/Western Region  
Julia Neal  
Mr. Bradley C. Oliver  
Mr. William E. Olson

Jacque Parkinson  
Mrs. Nancy Peacock  
Ms. Diane J. Plotts\*  
Ms. Lenore M. Prehler\*  
Mr. Ryon H. Rickard  
Mrs. Jean G. Rigler\*  
Kenneth S. & Shaunagh G. Robbins  
Ms. Cynthia Rubenstein  
Mrs. Eleanor W. Sexton\*  
Col. David Shanahan  
Capt. Matthew Shim  
Mrs. Barbara J. Smith  
Mary C. Smith  
Mrs. Berenice R. Spalding  
Mrs. Herta Stevens  
Mr. Gerald Sumida  
Miss Helen Ladd Thompson  
Mrs. Genevieve Trout\*  
Mrs. Betty M. Vitousek  
Dr. William H. Warren  
Dr. and Mrs. Carlos A. Weber  
Gaylord and Carol Wilcox\*  
Mrs. Elizabeth Williams  
Mr. & Mrs. A. James Wriston, Jr.  
Mr. Allan Yasue  
Dr. and Mrs. Stanley H. Zisk

## FAMILY

Mr. and Mrs. Neil Abercrombie\*  
Mrs. Grace Ackerman\*  
Mr. & Mrs. Charles W. Adcock\*  
Mrs. Earlene Albano  
Ann and John Alkire  
Mr. Thomas Beaupre  
Mr. and Mrs. Frank J. Bednar  
Mrs. Gertrude Berger  
Mr. and Mrs. Jesse E. Blackwell  
Mr. Bill Boland\*  
Mr. Ben Bond Jr.  
Shinna Bosley & Barbara Williams  
Mr. Edward Broadbent  
Brenda Arlene Buntin  
G. & O., B. & D. Buntin  
Mrs. Elizabeth K. Bushnell\*  
Capt. and Mrs. John H. Caldwell  
Marge & John Callahan  
Mr. David L. Callies  
Mr. Gary Canner  
Joan and Dick Chalmers  
Mr. and Mrs. Philip H. Ching\*  
Mr. and Mrs. Thomas S. Conger  
Mr. and Mrs. Clifford D. Cooper  
Mrs. Jean Cornuelle\*  
Dr. and Mrs. Leslie H. Correa



Joanna Carolan and Anne Loquercio took Preservation Honor Awards home to Kaua'i.

PHOTO BY RANDY T. FUJIMORI

Mr. Richard H. Cox  
 Mrs. Thomas Culbertson  
 Mr. and Mrs. Duncan F. Dempster  
 Dr. Dorothy B. Douthit  
 Edsung Foodservice Company  
 Mr. and Mrs. Uson Ewart  
 Mrs. Barbara C. Faye\*  
 Mrs. Joseph Ferraro  
 Mr. and Mrs. Kenneth Fiske  
 Vasanti and Joel Fithian  
 Dr. Joanne Flannery  
 Rick & Susan Fried  
 Mrs. Amy Fullaway  
 Mr. and Mrs. Frederick H. Furer\*  
 Mrs. Erminie Gartley  
 Mr. and Mrs. Theodore W. Gibson\*  
 Mr. William F. Gleason  
 Mr. and Mrs. Donald W. Y. Goo\*  
 Mr. Robert B. Graham, Sr.  
 Mr. and Mrs. William S. Haines  
 Mrs. Catherine Harris  
 Mr. Robert M. Harris  
 Mr. and Mrs. Donald G. Hasenyager\*  
 Mr. and Mrs. Mark H. Hastert  
 Mr. Larry E. Helber  
 Dr. George H. Herbig  
 Mr. & Mrs. Stanley K. Ikeda  
 Mr. Goro Inaba\*  
 Mrs. Frederick G. Irwin  
 Mrs. Marjorie Irwin James\*  
 Mr. Reverdy Johnson  
 Dr. and Mrs. R. Bruce Joseph  
 Mr. Howard H. Karr  
 Mr. and Mrs. Charles J. Keever  
 Mrs. Mary Lou Kekuewa  
 Mr. Jack Keppeler  
 Mrs. Kathleen Keys  
 Mr. and Mrs. Harvey King  
 Mr. Alton Kuioka  
 Mr. and Mrs. H. Peter L'Orange  
 Mr. and Mrs. John R. Lacy  
 Ms. Richanne Lam  
 Miss Teresa Law  
 Mr. and Mrs. Larry Langley  
 Mr. and Mrs. Reginald W. T. Lee  
 Michael and Helen Leidemann  
 Mr. and Mrs. Richard M. Libbey\*  
 Mrs. Elia A. Long  
 Mr. and Mrs. Robert Look  
 Virginia Lowell  
 Mr. & Mrs. James F. Lynch, Jr.  
 Mr. and Mrs. Richard Malmgren  
 Dr. and Mrs. Fujio Matsuda  
 Mr. and Mrs. William J. McCord  
 Dr. James McCutcheon\*  
 Mr. Bruce McEwan\*  
 Teresa A. McHugh  
 Wade McVay  
 Mrs. Maybelle A. Moore  
 Dr. Edward J. Morgan  
 Mr. & Mrs. Sanford Murata  
 Ron and Linda Nagata  
 Mr. and Mrs. John F. Nielsen  
 Mrs. Matsuyo Nose\*  
 Mrs. Patricia Nottingham  
 Ms. Esther A. Smith O'Toole  
 Mr. and Mrs. Edwin T. Okada\*  
 Lorraine Palumbo  
 Mr. and Mrs. Edward J. Parnell\*  
 Dr. James Penoff\*  
 Mr. and Mrs. Norman Piianaia  
 Mr. William Pratt  
 Mrs. Robert A. Purdue\*  
 Sue and John Ritchie  
 Ms. Jennifer Saville  
 Ms. Maureen Schaeffer  
 Mr. Oren Schlicman  
 Mr. Richard Sifuentes  
 Mr. and Mrs. Robert Silverstein  
 Mr. and Mrs. Carl Sorem  
 Mr. and Mrs. Edwin Sorenson

Mr. Robert Sparks  
 Mr. H. Howard Stephenson  
 Mr. and Mrs. James Swoish  
 Mr. Chris Swoish & Family  
 Ms. Chieko Tachihata  
 Ms. Angeline Tamekazu  
 Mr. and Mrs. James E. Tayon  
 Mr. Bill P. Thibadeau  
 Ms. Rowena Toomey  
 Mr. and Mrs. Albert F. Turner  
 Mrs. Marion Vaught\*  
 Mrs. Coralie Vellis\*  
 Mr. and Mrs. Albert J. Vivas, Jr.  
 R. Wakefield Ward  
 Mr. Robert T. Watts  
 Mrs. Katherine H. Wery\*  
 Mr. Robert M. Wheeler III  
 Mr. and Mrs. Stratford L. Whiting\*  
 Mrs. Elizabeth D. Wick  
 Ms. Wilma K. Wilkie  
 Mr. Thomas W. Wilson  
 Mrs. Ginger Winger  
 Lori K. Yamada & William M. Young  
 Mr. and Mrs. Stanley Yeackel  
 Ms. Yvonne Yee  
 Ann K. Yoklavich  
 Mr. William Yuen

#### INDIVIDUAL

Mrs. Velma C. Akinaka\*  
 Allen County Public Library  
 Mr. Lowell Angell  
 Ms. Vanessa Applbaum  
 Ms. Jan Campbell Atkins\*  
 Mr. George Atta  
 Ms. Dale Bachman  
 Mrs. Diane P. Barrett  
 Mrs. Lisa Barton  
 Ms. Margaret Berman  
 Ms. Patricia L. Bilyk  
 Ms. Mary Louise Blackburn  
 Dr. Gary Blaich  
 Robyn B. Blanpied  
 Mr. Richard Bordner  
 Ms. Sarah L. Botsai  
 Mrs. Elizabeth S. Boynton\*  
 Brigham Young University  
 Balbi Brooks  
 Lyn Brown  
 Dr. James C. Budde  
 Dr. Larry Burgess  
 Margaret Byrd  
 Thomas Cabrinha  
 J. Bruce Camino  
 Mr. Steve Case  
 Ms. Momi W. Cazimero  
 Ms. Elaine M. L. Chang  
 Charles Reed Bishop Learning Center  
 Scott Cheever  
 Corinne Ching & Stuart Lerner  
 Mr. Edward K. Conklin  
 Cooke Library  
 David Cooper  
 Mr. Robert M. Crone  
 Mr. Merle D. Crow  
 Mr. Kainoa Daines  
 Ms. Joy Davidson  
 Ms. Hinda Diamond  
 Dawn Duensing  
 Mrs. Annette Nalani Ebinger  
 Mrs. Raymond D. Emory\*  
 Ms. Patricia G. Engelhard\*  
 Lynn Erfer  
 Ms. Marsha Erickson  
 Mr. James M. Ewing  
 Tom Fee  
 Mrs. Mollie Foti  
 Ms. Noelani Fowler  
 Mrs. Phyllis Fox\*  
 Mr. Robert M. Fox\*  
 Thuy Fujimoto

Ms. Liz Dreher Howard\*  
 Mrs. Judith H. Hughes\*  
 Mrs. Shelley M. Germain  
 Mr. and Mrs. Gary Gill  
 Mr. J. Gillmar  
 Sally Glenn  
 Mr. David M. Goetz  
 Nan Marie Greer  
 Agnes E. Griffin  
 Mr. Jack D. Grindstaff  
 Mrs. Anna Maria R. Grunc  
 Ms. E. Doanie Hare  
 Ms. Jenny Hartley  
 Ms. Connie Hastert  
 Ms. Lani Hearn  
 Mrs. Hazel Hee  
 Mrs. Janet Henderson  
 Mr. and Mrs. John R. Hofmann, Jr.  
 Ms. Kristin Holmes  
 Mr. Alan S. Holzman  
 Ms. Jenny R. Howard  
 H R Architect, Inc.  
 Senator Daniel K. Inouye  
 Mrs. Eleanor W. Jacobsen  
 Mr. Mark Jolly  
 Mr. Chester Kaitoku  
 Kamehameha Schools  
 Maile Kane  
 Kauai Community College Library  
 Kauai Historical Society  
 Keku'iapo'iwa Learning Center  
 Mrs. Margie Kiessling  
 Ms. Victoria Kim  
 Dr. Judith Kirkendall  
 Koke'e Leaseholders Association  
 Kona Historical Society  
 Dawn K. Krause  
 Ms. Harriet Y. Kuwamoto  
 Ms. Carolyn Larson  
 Mr. Scott Larson  
 Mr. Robert Lazo, AIA  
 Catherine Smith Lentz  
 Ms. Lisa Livingston  
 Andrew A. Lockwood  
 Mr. Tom Loffman  
 Mrs. Barbara Long  
 Carol Lovell  
 Ms. Brenda Lowrey  
 Mrs. Deborah B. Lowry  
 Mrs. Ellen M. Luhrs  
 Douglas P. Luna, AIA/Architect  
 Mrs. William B. Lupton\*  
 Mr. Duncan MacNaughton  
 Ms. Nancy E. Magraudy  
 Mr. Michael J. Marks\*  
 Mrs. Kathy Martin-Yeager  
 Ms. Marianna Marwell  
 Mr. Charles F. McClure  
 Mr. John McGrath  
 Mr. Franklyn Meyer  
 Mr. Jay Miyaki  
 Susan Horst Mori  
 Mr. Richard S. Morris  
 Ms. Nancy A. Mower  
 Ms. Margaret Murchie  
 Virginia D. Murison, AIA\*  
 Ms. Donna B. Nathanson  
 Mrs. Martha Nelson  
 Mrs. Margaret Gosling Nesbitt\*  
 Ms. Valerie Nishida  
 Mr. Greg Northrop  
 Mrs. Katharine F. Norwood\*  
 Ms. Mary Louise O'Brien  
 Michael Ogan  
 Adele "Kai" Ostrem  
 Mr. Alvin Pauole  
 Mrs. Janice Pechauer  
 Ms. Dorothy Chambers Phillips  
 Mrs. Stephanie Ponciano  
 Mrs. Elizabeth Porteus\*  
 Anne K. Pulfrey



Ms. Barbara L. Quinlan  
 Mr. U. J. Rainalter, Jr.  
 Mr. Robert A. Ramsay  
 Mrs. Eleanor S. Richardson  
 Mr. and Mrs. Barnes Ritnik  
 Walter Ritte  
 Mrs. Marian A. Sandelin\*  
 Donald M. Shaw  
 Miss Phyllis Shea  
 Jacqueline Siegel  
 Keri Sison  
 Charlotte M. Sotello  
 Mrs. John H. Southworth\*  
 Mr. Robert J. Stanley  
 State Historic Preservation Ofc.  
 Dr. M. Dolly Strazar  
 Mr. Willard Thomas  
 Mrs. Lyn Turner  
 Colleen H. Uahinui  
 Mr. Jay Voss  
 Ms. Francine Wai  
 Mrs. Patricia Ward Walter  
 Ms. Michelle Weeks  
 Mr. Jesse C. Wells\*  
 Mr. Duane Wenzel  
 Mr. John P. Whalen  
 Mr. Craig A. Williams  
 Mrs. Rianna M. Williams  
 Dr. DeEtta C. Wilson  
 Shannon Wilson  
 Windward Community College Library  
 Mr. Adam Wong  
 Mr. John Wullbrandt  
 Mr. Byrnes K. Yamashita

#### STUDENT/SENIOR

Mrs. Lillian B. Adams\*  
 Ms. Jane Christman Albritton  
 Meryl Andersen  
 Mrs. Beverly S. Ashford  
 J. G. Astman  
 George E. K. Awai, Jr.  
 Mr. James Baer

Mr. Ben Baldwin  
 R. H. Baldwin  
 Ms. Virginia Baz  
 Mr. Ben Beeson  
 Ms. Elizabeth Bell  
 Mrs. Jane Lee Boynton  
 Mrs. June M. Bradley  
 Ms. Goldie D. Brangman  
 Mrs. Helen M. Brown  
 Ms. Harriet Brundage  
 Mrs. Eileen K. Bull  
 Capt. Louis Bushnell, USMC (Ret.)  
 Mr. Emmett Cahill  
 Mrs. Phoebe Campbell  
 Dr. & Mrs. Terence Carolan  
 Mrs. Mary Caywood  
 Dr. Helen Chapin  
 Ms. Pauahi Clark  
 Ms. Esther Y.H. Chun  
 Dr. Elizabeth W. Clark  
 Dr. William Cleghorn  
 Mrs. Judith P. Cochran  
 Mrs. Jean Cox  
 Capt. T.J. Davies, Jr. (Ret.)  
 Mrs. Barbara Del Piano\*  
 Mrs. Janet Dorrance  
 Mrs. Marion A. Durant\*  
 Mrs. Barbara F. Earle\*  
 Mrs. Mary T. English\*  
 Miss Dorothy M. Evans\*  
 Mr. William Fabis  
 Mrs. Donald R. Farmer  
 Ms. Paula S. Faulkner  
 Mrs. Francis E. Fleck  
 Mrs. Mary "Petty" Floyd  
 Mr. Reginald P. Gage II  
 Ms. Gail Gammie  
 Mrs. Maylien W. Grosjean\*  
 Lt. Cdr. and Mrs. Ernest Gunther  
 Mrs. Windsor G. Hackler\*  
 Mrs. Pleiades G. Hanson  
 Mrs. Theodore H. Harders\*  
 Ms. Catherine Casem Harlan

Ms. Joan Harper  
 Mrs. Clark J. Hastert\*  
 Hawaii State Library  
 Mr. John M. Hayakawa  
 Mrs. Louise Hallsted Helmer  
 Mrs. Orpha Herrick\*  
 Mr. Howard K. Hiroki  
 Dr. Ralph C. Hook, Jr.\*  
 Miss Irmgard Hormann\*  
 Mr. John W. Hoxie  
 Marjorie W. Hyman  
 Mr. Wayne Kehau Ingols  
 Mrs. Mary S. Judd  
 Ms. Sarah M. Judd  
 Mr. Yasuto Kaihara\*  
 Mrs. Winona B. Kamai  
 Ms. Karen Kane  
 Ms. Carol Kawanakao\*  
 Masuo Kino  
 Mrs. Kay Kramer  
 Karin A. Latham\*  
 Mary Leineweber\*  
 Mr. George R. Lowson  
 Mrs. Shirley M. Ludden  
 Ms. Barbara Makua  
 Ms. Susan Y. Marcotte  
 Mr. Milton A. Masing  
 Ms. Betty Matsumura  
 Dr. Sherwood Maynard  
 Mrs. Esther Waihee McClellan\*  
 Ms. Donna McDonnell  
 Mrs. Beverly H. McKeague\*  
 Mr. L. Richard Melcher  
 Mr. Richard J. Meyer  
 Miss Diane J. Nielsen\*  
 Mrs. Eleanor C. Nordyke\*  
 Mrs. Shirley Nordyke\*  
 JoAnn Omayas  
 Mrs. Margaret F. Patterson  
 Dr. Joan Daniels Pedro  
 Mr. and Mrs. Kenneth J. Pratt  
 Mr. Carl L. Reber  
 Mrs. Mary Deas Reynolds



MARGO GOODWILL

Mrs. Barbara K. Robello\*  
 Mrs. Violet-Marie Roschill  
 Mrs. Colleen Roth  
 Mrs. Robert H. Rotz  
 Mr. Michael E. Schaub  
 Mrs. Barbara M. Seymour  
 Mr. John S. Silva, Jr.  
 Mrs. Frederick Simpich  
 Mr. Lloyd J. Soehren\*  
 Mrs. Patt R. Spencer  
 Mrs. Marilyn Stassen-McLaughlin\*  
 Miss Ann Stegmaier\*  
 Mr. Joseph S. Stoddard  
 M. Jane Stubenberg  
 Mrs. Kinuko Taniguchi  
 Ms. Barbara Thompson\*  
 Mr. James P. D. Thropp, Jr.  
 Mrs. Barbara J. Thurston  
 Dr. P. Quentin Tomich\*  
 University of Hawai'i at Hilo Library  
 Mrs. R. C. Van Etten  
 Ms. Helen Troy Von Tempsky\*  
 Mrs. Norah E. Walker\*  
 Dr. F. B. Warshauer  
 Ming-Yi Wong  
 Mrs. Martha M. Wood  
 Mr. Shozo Yoshizawa  
 Mr. George Yuen  
 Mrs. Margaret Zabriskie\*

#### **CORPORATE HERITAGE LEADER**

Bank of Hawaii  
 Persis Corporation  
 The Honolulu Advertiser

#### **CORPORATE HERITAGE PATRON**

Aloha Airlines  
 Central Pacific Bank  
 First Hawaiian Bank  
 Gannett Foundation  
 Grace Pacific Corporation  
 Harold K.L. Castle Foundation  
 Hawaiian Electric Industries, Inc.  
 Hawaiian Electric Company, Inc.  
 Kahala Mandarin Oriental Hawaii  
 Royal Contracting, Co. Ltd.  
 Verizon Hawaii

#### **CORPORATE HERITAGE BENEFACTOR**

Aall Hawaii Holdings & American Land Company  
 Alexander & Baldwin, Inc.  
 Alston Hunt Floyd & Ing /  
 Louise Ing & Michael Stich  
 Armstrong Building Maintenance  
 Bays Deaver Lung Rose & Baba  
 Becker Communications, Inc.  
 Belt Collins Hawaii Ltd. / Kikiaola Land  
 Cades Schutte LLP  
 Carlsmith Ball LLP  
 Coldwell Banker Pacific Properties  
 Deloitte & Touche  
 First Insurance Company of Hawaii, Ltd.  
 Group 70 International  
 Hawaiian Airlines, Inc.  
 Hawaiian Cement  
 HMSA  
 Mason Architects, Inc.  
 PricewaterhouseCoopers LLP  
 Servco Foundation  
 The Bayer Estate LLC  
 The Estate of James Campbell  
 The Gentry Companies  
 The Schuler Family Foundation  
 Watanabe Ing Kawashima Komeiji LLP

#### **CORPORATE HERITAGE ASSOCIATE**

American Savings Bank  
 Ameron Hawaii  
 Ernst & Young  
 Island Insurance Company, Ltd.

RCM Construction Corporation  
 Royal Contracting Co., Ltd.  
 Standard Parking

#### **CORPORATE**

3660 on the Rise  
 Accent on Nails  
 Ala Moana Hotel  
 Aon Risk Services  
 Architects Hawaii, Ltd.  
 Atalanta Sosnoff Capital Corp.  
 AT&T Hawaii  
 Bello's Millwork, Inc.  
 Bete Inc.  
 Bishop Museum  
 Budget Rent A Car  
 California Hotel & Casino  
 Cardinal Mailing Services, Ltd.  
 Castle & Cooke Hawaii  
 Chez Paul French Restaurant  
 Chuck's Steak House  
 Ms. Kaili Chun  
 City Mill  
 Clarence Lee Design & Associates  
 Communications Pacific, Inc.  
 Conrad Schmitt Studios, Inc.  
 Cooper Enterprises, Inc.  
 Curves  
 Cycle City, LTD.  
 Dancing Cat Records  
 David Paul's Lahaina Grill  
 Days of Aloha  
 Deico Products  
 Delano & Seymour's Hawaiian House  
 DFS Hawaii  
 Diamond Head Theatre  
 Dillingham Ranch Management  
 Doris Duke Foundation for Islamic Art  
 Duck Tours  
 Dukes Restaurant  
 E Noa Tours/Asian Pacific Advisors. Ltd.  
 Elite Limousine  
 Estate Vineyards & Winery  
 Ethelreda  
 Ezio's International Hairstyles, Inc.  
 Fire it Up  
 Foodland Super Market Ltd.  
 Four Seasons Resort Hualalai  
 Friends of 'Iolani Palace  
 Glassware Decorators of Hawaii  
 Hale Ho'okipa Bed & Breakfast  
 Hale Ku'ai Cooperative  
 Halekulani Hotel  
 Hana Hou (Keehu Corp.)  
 Hart-Felt Massage & Day Spa, LLC  
 Hassman Caldaroni Design  
 Hastings, Conboy, Braig & Assoc. Ltd.  
 Hawaii Opera Theatre  
 Hawaii Public Radio  
 Hawaiian Historical Society  
 Hawaiian Islands Stamp & Coin  
 Heaven on Earth  
 Hilo Hattie-The Store of Hawai'i  
 Hilton Hawaiian Village  
 Honolulu Academy of Arts  
 Honolulu Symphony  
 Honolulu Zoological Society  
 Honsador Lumber Corporation  
 Hungry Hawaiian, Inc.  
 Hyatt Regency Kauai  
 Hyatt Regency Waikiki  
 Indigo Eurasian Cuisine  
 IONA Contemporary Dance Theatre  
 Island Art Galleries  
 J Salon  
 Jameson's By The Sea  
 Jungle River Mini Golf Village  
 Ka'anapali Beach Hotel  
 Ka'anapali Golf Courses  
 Keiki Photography  
 Kilauea Lodge

King & Neel, Inc.  
 Kualoa Ranch  
 Kumu Kahua Theatre  
 Kwilts n' Koa  
 Lauhala Trading  
 Lisa Rose Doll House & Tea Room  
 Louis Vuitton Hawaii, Inc./  
 LVMH Fashion Group Hawai'i  
 Manoa Valley Theatre  
 Marsha Nadalin Salon  
 Martin & MacArthur  
 Mary Catherine's Bakery  
 Matters of Taste  
 Maui Divers Jewelry Design Center  
 Mauna Kea Beach Hotel/  
 Hapuna Beach Prince Hotel  
 Mauna Lani Resort, Inc.  
 Merrill Lynch  
 Mission Houses Museum  
 Mona Lisa Designs  
 Moutarde Café/Kahala Caterers, Inc.  
 Murphy's Bar & Grill  
 Mutual Publishing  
 Na Pali Explorer  
 Native Books  
 Nohea Gallery  
 North Shore Catamaran Charters  
 Outrigger Hotels  
 Pacific Harley-Davidson  
 Padovani's Restaurant & Wine Bar  
 Pahala Plantation Cottages  
 Paradise Cruise  
 Patagonia  
 Paul Brown Salon & Day Spa  
 PBR Hawaii  
 Pegge Hopper Gallery  
 Pioneer Inn  
 Princess Kaiulani Fashions  
 R. M. Towill Corporation  
 Renaissance Ilikai Waikiki Hotel  
 Riches Kahala  
 Robyn Buntin of Honolulu  
 Royal Hawaiian Hotel  
 Royal Hawaiian Shopping Center  
 Roy's West Maui Restaurants  
 Sabrina's Restaurant  
 Sam Choy's Diamond Head Restaurant  
 SandSea Vacation Homes  
 Shell & Jewelry Creations by Sam  
 Sheraton Moana Surfrider/Kyo-ya Co., Ltd.  
 Shipman House Bed & Breakfast  
 Sig Zane Designs  
 Southern Wine & Spirits of Hawaii  
 Tea at 1024  
 The Contemporary Museum  
 The Honolulu Advertiser  
 The Lodge at Koele  
 The Worth Collection  
 Tom Moffatt Productions  
 Tori Richards, Ltd.  
 Turtle Bay Resort  
 Twogood Kayaks Hawaii, Inc.  
 Under a Hula Moon  
 University of Hawaii Press  
 Victoria Ward, Ltd.  
 W Honolulu Hotel  
 Waikiki Aquarium  
 Waimea Plantation Cottages/  
 Kikiaola Land Co.

We have made every effort to ensure an accurate and complete listing of our valued members and supporters. If we have misspelled or omitted any name, please let us know so that we can make corrections.



MARY LEINWEBER

#### TRUSTEE EMERITUS

Mrs. Allyn Cole, Jr.

#### EXECUTIVE DIRECTOR

David Scott

#### OPERATIONS MANAGER

Lisa Oshiro

#### CONSULTANTS

Detor & Williams, CPA, Auditor

Lori Yamada

#### OFFICE VOLUNTEERS

Loretta Abe, Katy Brehm, Liana Lum,  
Barbara Makua, Abigail Maynard

#### GRAPHICS

Charles Taketa Graphic Design, Inc.

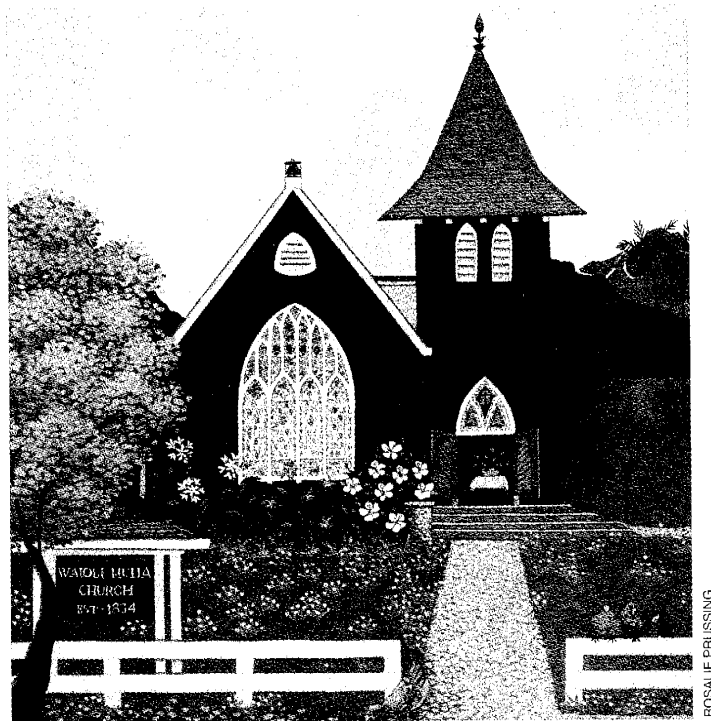
## HISTORIC HAWAII FOUNDATION

Mailing Address: P.O. Box 1658, Honolulu, HI 96806

Telephone (808)523-2900 • Fax (808)523-0800

Email: [hhfd@lava.net](mailto:hhfd@lava.net) • website: [www.historichawaii.org](http://www.historichawaii.org)

680 Iwilei Road, Suite 690, Honolulu, HI 96817



**Historic Hawai'i Foundation**  
Post Office Box 1658  
Honolulu, Hawai'i 96806

Nonprofit  
Organization  
U.S. Postage  
**PAID**  
Honolulu, HI  
Permit No. 1301