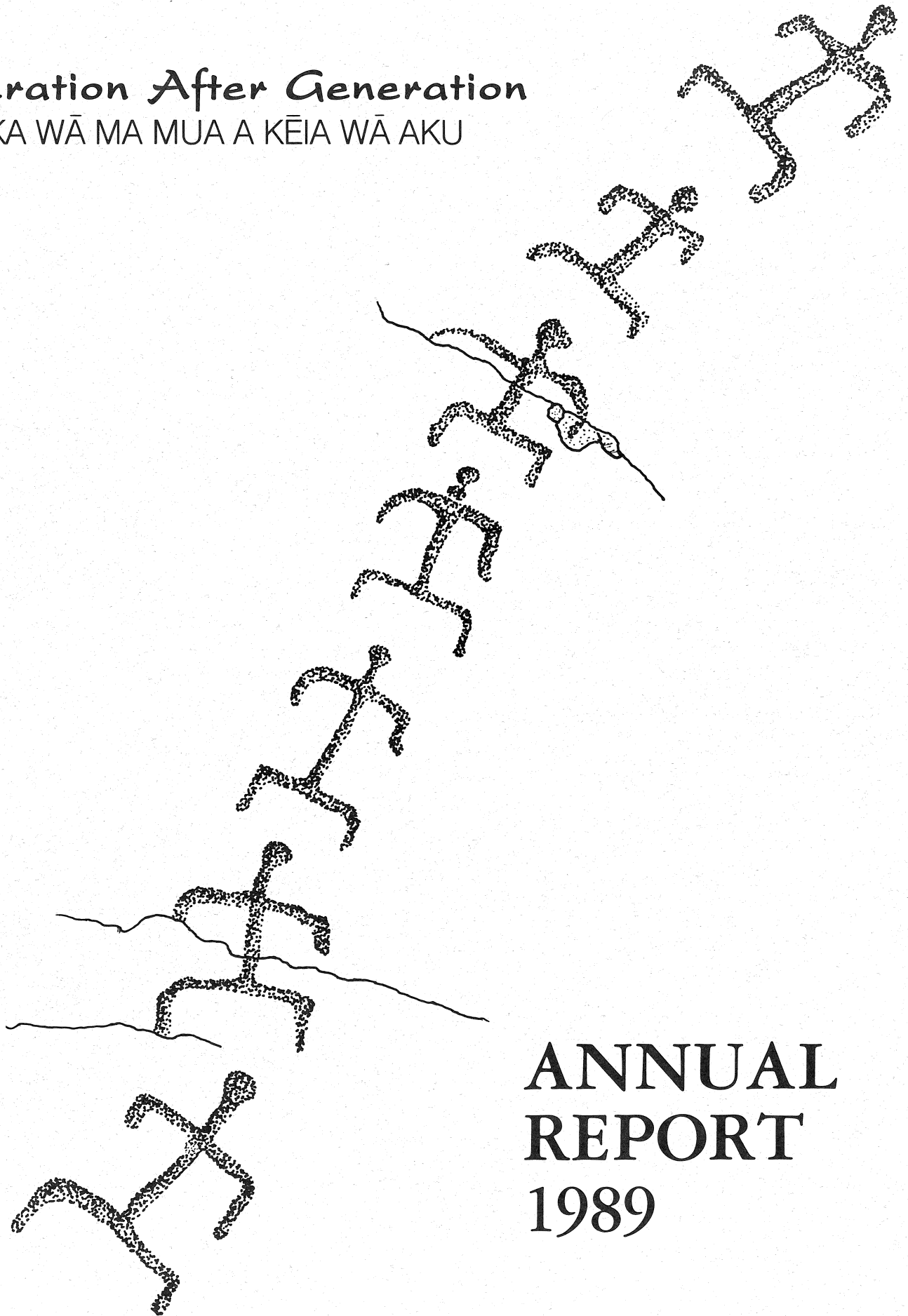


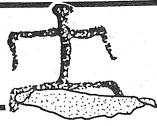
# HISTORIC HAWAI'I

*Generation After Generation*

MAI KA WĀ MA MUA A KĒIA WĀ AKU



ANNUAL  
REPORT  
1989



## PRESIDENT'S REPORT

*"The purpose of the Foundation shall be to preserve and encourage the preservation of historic buildings, objects and sites relating to the history of Hawai'i, to promote an awareness of and respect for all that is historically significant and architecturally distinctive about our State; and through these efforts to keep alive and intact for the enrichment of present and future generations the heritage, traditions, culture and lifestyle of the Hawaiian Islands and their unique historic role in the development of the Pacific Basin."*

— Historic Hawai'i Mission Statement

Over the past 16 years, our Foundation has placed priority on "preserving and encouraging preservation". We fought to keep the *Falls of Clyde* in Hawai'i, helped the tenants of O'ahu Market buy and rehabilitate their landmark building, held workshops on rehabilitation tax credits and techniques, testified in support of building codes and developments which encouraged good rehabilitation.

Times change; we accomplish our goals, we affect the changes we were striving to make. Economic and social environments change - real estate prices escalate beyond our ability to provide incentives, thousands of new residents without a sense of the history of their new home become a part of our communities, millions of tourists look for uniquely Hawaiian experiences through their vacations.

One of the greatest strengths of our members and trustees is that they are attuned to change...and willing to adapt our preservation programming to these changes.

This is now the case as we focus in the future on heritage education.

The wonder of our organization is our own heritage, the legacy that the original founders gave to us in our mission statement which still serves as a guide to our purpose and goals.

As we read it again, it seems that we have over the past 10 years followed the first part of our mission "to preserve and encourage preservation" and are now building upon that experience to "promote an awareness of and respect for all that is historically significant and architecturally distinctive about our state".

In the past we have addressed action. We are now looking toward directing attitudes. We have given priority to providing resources, and are now giving priority to efforts to provide information to as many people as possible about the significance of Hawai'i's man-made heritage to establish respect for our legacy of architecture and archaeology as a shared ethic.

The future of Hawai'i truly depends upon how well we preserve our past.

Phyllis G. Fox

Phyllis G. Fox  
President





## CHAIRMAN'S REPORT

One of the most significant events for your organization during the last year was a gathering of the trustees to review and update a strategic plan for Historic Hawai'i Foundation.

Just as in the business world, periodic reviews are necessary to see where we have come from, to see what was (and what was not) done right, and then to plan ahead for the next five years.

The results of this planning effort have set a new course, a new emphasis, for activities involving HHF. Essentially what we looked for as the plan developed was a way to extend or multiply the effect of the organization through our programs.

Having read the Mission Statement in the President's Report, you can recognize the key words: "to preserve and encourage the preservation". These acts are accomplished through other parts of our mission: "to *promote* an *awareness* of and *respect* for", and "to keep alive...for present and future generations the heritage, traditions, culture and lifestyle of the Hawaiian Islands...."

I'm particularly pleased to report on the activities in 1989 that carried out our goals in support of this mission statement.

Awareness of the value of preservation was promoted by our "Experts at the Palace" lecture series. We continued to support the University of Hawai'i Historic Preservation Graduate Certificate Program, and have been pleased with the attraction that the program has held for the students.

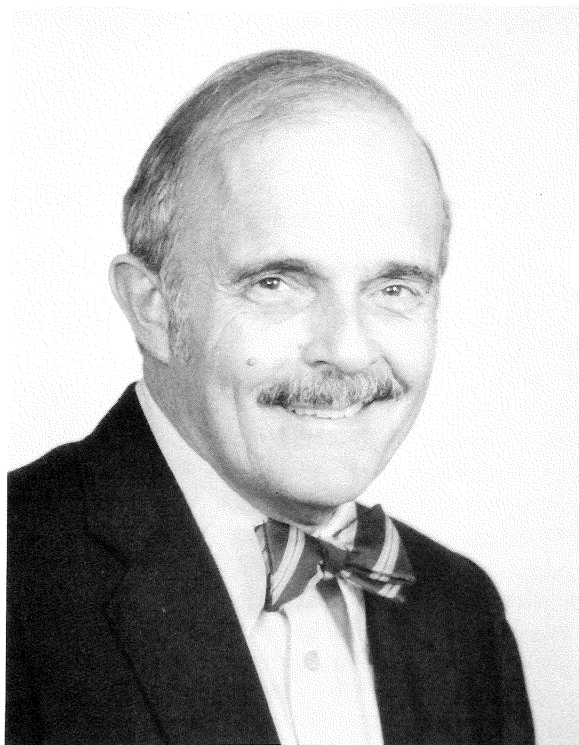
The past year also saw the return of the Preservation Honor Awards, with several outstanding awardees. The selection committee operated under the able leadership of Sheridan Ing.

In order to accomplish our goals, HHF needs financial support, and the fund raising highlight of 1989 was the *Kama'āina* of the Year affair at the Royal Hawaiian Hotel honoring Herman von Holt. We also continued to expand our successful Heritage Associates membership, including added corporate support.

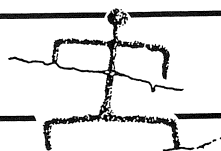
As I complete my second and last year as Chairman of the Board of Historic Hawai'i Foundation, I'm pleased with our focused efforts, particularly in education, made in accordance with our strategic plan.

I would especially like to thank the officers who served so steadfastly with me over the last two years, as well as the special program chairpersons who made our events so successful.

It has been my pleasure, and an honor, to be the chairman of an organization such as Historic Hawai'i Foundation.



C. Dudley Pratt, Jr.  
Chairman of the Board



## ACHIEVEMENTS

### HERITAGE TRUST

Last year we accomplished one of the most crucial tasks the Foundation has undertaken. We convinced the state government to create a Heritage Fund. The legislature appropriated \$1 million to generate income to provide financial assistance for historic preservation projects throughout the state.

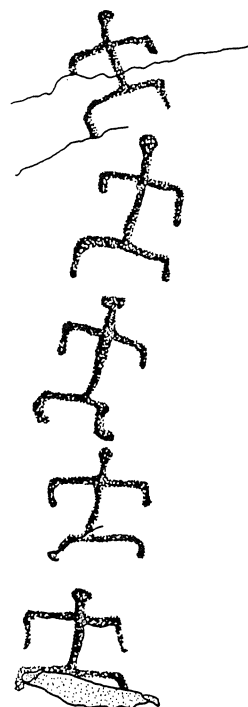
Members and friends of Historic Hawai'i, by submitting needs assessment forms, showed the government that the trust was indeed a necessity.

The money, appropriated to the Department of Land and Natural Resources, was invested to generate income that will be used for project funding. Historic Hawai'i Foundation has offered to administer the funds for the state.

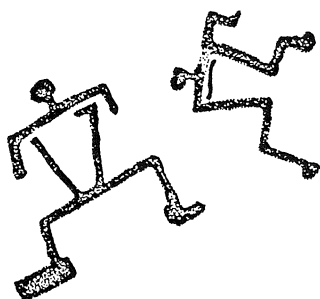
*Mahalo* to State Representatives Carol Fukunaga, David Hagino, and Joseph Souki, State Senator Eloise Tungpalan, and to Governor John Waihe'e, who signed the bill into law on June 27, 1989.

The establishment of the Heritage Trust represents a challenge well met.

Gladys A. Brandt, Chair  
Heritage Trust Committee



### HAWAI'I VISITORS BUREAU MAILE AWARD



Historic Hawai'i Foundation received a prestigious Maile Award from the Hawai'i Visitors Bureau at its Sixth Annual Membership Luncheon in July. The award is the highest commendation HVB confers, and is presented for outstanding leadership in support of the community and the Hawai'i visitor community.

The award, given to individuals or organizations which have made significant contributions to the state's tourism industry, was given to three conservation organizations for "outstanding efforts to preserve and enhance Hawai'i's precious environmental, historic and cultural legacy." In addition to Historic Hawai'i Foundation, the Nature Conservancy of Hawai'i and The Friends of 'Iolani Palace also received Maile awards at the annual presentation.

It was the first time the award went to organizations not normally considered a part of tourism's mainstream. This year HVB felt it important to focus on the organizations and their work, which has made a considerable contribution to the history, heritage and environment of Hawai'i, thus enriching the visitor experience.





## 1989 HISTORIC PRESERVATION HONOR AWARDS

It is vitally important to recognize individuals and organizations when they serve as stewards of our past, successfully preserving historic buildings and archaeological sites. In 1989 Historic Hawai'i Foundation recognized 11 examples of outstanding effort.

A Preservation Commendation for a Government Agency or Organization went to the State of Hawai'i Department of Accounting and General Services for the restoration and rehabilitation of Ali'iolani Hale. A Preservation Certificate for an Individual went to Star-Bulletin reporter Phil Mayer, who was honored for informing the community about endangered buildings and historic preservation in general. Preservation Awards for Specific Programs or Projects were given to Ali'iolani Hale, the Alexander & Baldwin Sugar Museum, the Judiciary History Center, Punahou School's Cooke Hall, Hale Kea, the Hemmeter Corporation Building, the Moana Hotel, the Moloka'i Museum and Cultural Center's R.W. Meyer Sugar Mill, and the Contemporary Museum.

A newsman, a state agency, architects, owners, historians...the honorees all have one thing in common: they did their part to keep history alive. In the world of historic preservation they are real heroes.

Sheridan C.F. Ing, Chair



Award-winning preservationists.

Joe Solem

## LOUIS VUITTON GOLF TOURNA- MENT

For several years Louis Vuitton has held a benefit golf tournament and recognized a single charity each year as its beneficiary. In 1989 Historic Hawai'i Foundation was fortunate enough to receive this distinction. In addition to the honor of being chosen, the Foundation received a \$54,700 donation. Funds contributed by those who entered the tournament were matched by the Louis Vuitton company which also underwrote all of the expenses of the tournament. The Louis Vuitton 1989 Hawai'i Charity Golf Tournament, held on the Island of Hawai'i on January 2, has greatly enriched our efforts to preserve Hawai'i's past. *Mahalo nui loa*, Louis Vuitton.

## 'GENERATION AFTER GENERATION' PUBLIC AWARENESS CAMPAIGN

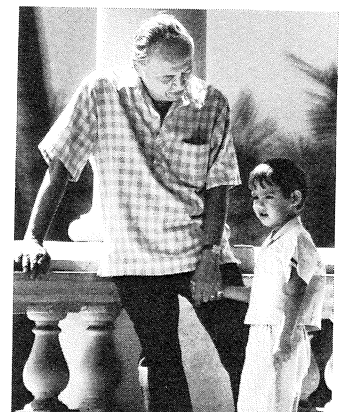
In 1989 Historic Hawai'i kicked off its campaign to promote heritage education. Using the theme "Generation After Generation", we created a custom ad for publication in Island and Mainland periodicals.

The advertisement, developed with the help of public relations firm Gregorio & Associates, features a *kama'āina* grandfather talking story with his grandson about the richness of the past, passing on a legacy that will provide a sense of place for the boy.

Half-tones of the ad were sent out in multiple sizes to publications throughout the state and on the Mainland. It has been carried complementarily by the print media in Hawai'i and ran in the March 1990 issue of *Sunset Magazine*, as well. Included in the press kit is a comprehensive news release outlining all of the Foundation's educational programs.

We are indebted to volunteers Adam Baker, Jr. and his *mo'opuna kane* Adam Baker IV for appearing in the promotion.

### GENERATION AFTER GENERATION



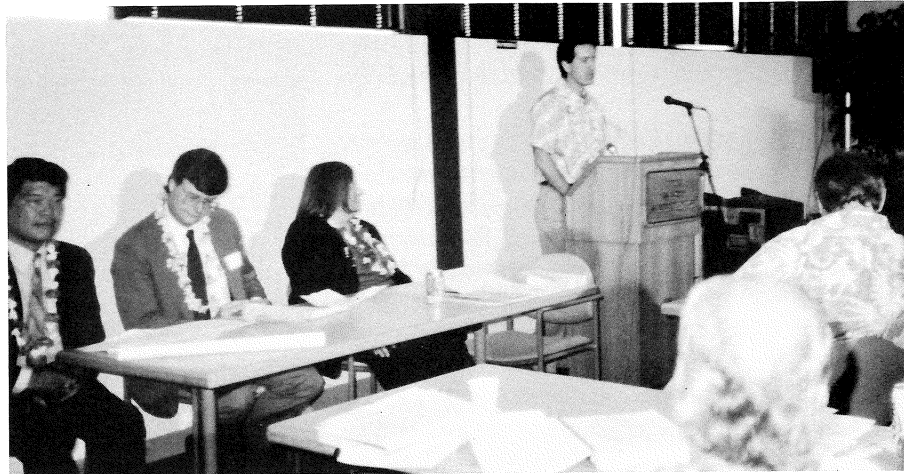
HISTORIC HAWAII FOUNDATION  
Preserving Our Island Heritage



## EDUCATION

### ABA CONFERENCE

*Learning about growth  
management at the Ward  
Warehouse.*



Dion Coschigano

Growth management is a critical issue in Hawai'i and nationally. As land values rise, pressure for development increases, resulting in the destruction of our historic buildings and sites.

Approximately 70 people attended the symposium held in August at the Ward Warehouse Kewalo Room to learn more about growth management and historic preservation.

An impressive panel included both Island specialists and Mainland legal experts, who were in Honolulu to attend the American Bar Association's annual convention and graciously set aside the time to meet with us and apply their expertise to our Island concerns. Representing Hawai'i on the panel were attorneys, government officials and representatives from diverse citizen-action groups. The packed audience enjoyed a collective wealth of knowledge from which to learn more about this vital issue for our state.

A year of planning and coordination went into the symposium and efforts were rewarded by the reviews and gratitude of those who attended.

The conference, co-sponsored by the Sections of Real Property, Probate and Trust Law, Urban, State and Local Government Law and Historic Hawai'i Foundation, covered such vital issues as zoning, Hawaiian burials, "taking", government processes, and negotiating with developers outside of the courts.

Thalia Lani Ma'a  
Thomas A. Coughlin, ABA  
Co-Chairs

## HERITAGE EDUCATION VIDEO

The Historic Hawai'i pilot video was developed as a way to enlist the support of Hawai'i's younger generations in protecting our historic man-made environment.

The project was accomplished with corporate donations and in-kind expertise, and help from many sources. The Department of Education Hawaiian Studies experts served as advisors.

The 12-minute video takes the viewer from island to island, explaining the significance of preserving our special heritage. It travels to mission houses, fishponds, palaces, ancient heiau, taro fields, harbors, ranches, and plantation towns.

It will be distributed throughout the state to public and private schools and libraries, and is available to anyone who would like to use it to encourage historic preservation.



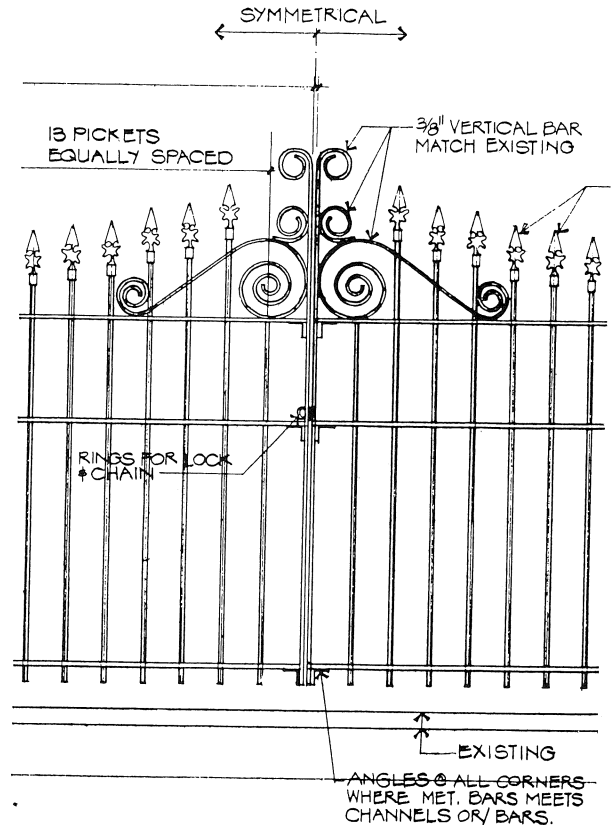
## EXPERTS AT THE PALACE

Historic preservation experts journeyed from all over the country and the world in 1989 to share their knowledge with the local community. Appearing at their own expense, these sages of restoration spoke during the noon hour on Wednesdays from January through May at the old archives building on the grounds of 'Iolani Palace. The talks in this second annual series were free and open to the public, and generally enjoyed capacity crowds.

The theme of 1989's Experts at the Palace series was "Preservation as a Development Alternative".

Helping to coordinate the series was Judith R. Hughes, Ph.D., Historic Hawai'i Trustee and Associate Dean, University of Hawai'i-Mānoa College of Arts and Humanities. The talks represent one of the more visible aspects of the Historic Preservation Graduate Certificate Program, and are co-sponsored by Historic Hawai'i Foundation and The Friends of 'Iolani Palace.

William J. Murtagh, Ph.D.  
Visiting Professor, Historic Preservation Program  
University of Hawai'i at Mānoa



*Kawaiaha'o church gates: the historic built environment, closely examined.*

## HISTORIC PRESERVATION GRADUATE CERTIFICATE PROGRAM

Nineteen eighty-nine was the third year of the certificate program in historic preservation offered by the Department of American Studies at the University of Hawai'i, Mānoa. Nine students were enrolled in the program, which requires 15 credits of graduate-level work, including an internship.

The University of Hawai'i is one of the relatively few universities to provide graduate training in historic preservation. Late last year a number of the stu-

dents visited the Historic Hawai'i offices to get a closer look at how the Foundation operates.

Approximately 60 people have gone through the program, with 10 receiving certificates. Alumni of the program have gone on to work in planning offices, museums, and the fields of law and real estate.

Student interns in the program are again working on accredited projects with Historic Hawai'i. Working with

Foundation staff, interns have focused on strategic planning, a mission statement, community interaction, docent training, brochures, exhibits, tours, and general direction for the Chinatown Interpretive Center.

William J. Murtagh, Ph.D.  
Visiting Professor, Historic  
Preservation Program  
University of Hawai'i at Mānoa



## PRESERVATION PARADE

Last May we held one of the most interesting and educational Preservation Parades in the 12 years that Historic Hawai'i has been presenting them. Those who took part were able to explore "The Mysteries of Chinatown" as they took self-guided walking tours through this magnificent historic district.



*Chinatown, site of the 1989 Preservation Parade.*

Jessica Rose Hernandez

Tour goers viewed historic buildings, learned about Chinese herbs and acupuncture, and feasted on the food of the Orient. The parade also provided a chance to get acquainted with such disparate establishments as art galleries and noodle factories—businesses representing both the new and the old.

In "Celebrating the Chinese Bicentennial" we brought people back to rediscover Chinatown, an important part of our cultural and architectural heritage.

Larry Ing, Chair



## 'KEEPERS OF THE PAST'

Last fall we hosted a series of *kama'āina* luncheons entitled "Keepers of the Past". Featured at luncheons at the Royal Hawaiian Hotel were two Island speakers with unique perspectives on the past.

In October, Hanapē artist James Hoyle shared his "Visions of Hawai'i", which include impressionistic renderings of historic structures prior to their demolition. In November, antique jewelry expert Marion Globber talked about "Gems from a Past Era".



## FUND RAISING

### WINTER BENEFIT

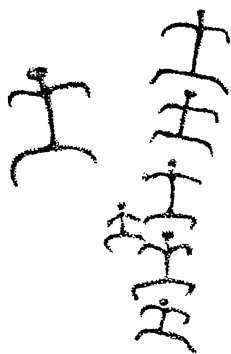
Our largest, most successful and most elegant fund-raiser to date was "A Royal Hawaiian Holiday Gala", our 1989 Winter Benefit. The event was held on December 1 in the Monarch Room of the historic Royal Hawaiian Hotel. A total of 460 sponsors and guests attended.

For the first time, we took the opportunity to honor an individual as "Kama'āina of the Year". That distinction was bestowed upon Herman von Holt, who was recognized for his many accomplishments as an *akamai* businessman and for his immeasurable contributions to the community. The Foundation was proud to acknowledge the distinguished von Holt as a very special member of Historic Hawai'i.

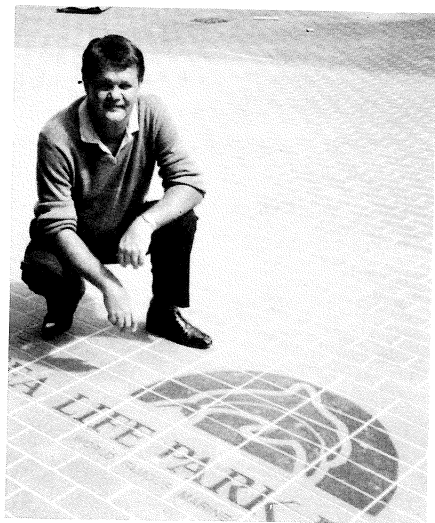
Entertainment was provided by A Touch of Brass, the Brothers Cazimero, and the Paul Madison Quartet. More than \$62,000 was raised for Historic Hawai'i's programs.



Linda Fulgenzi  
Gerald E. Kremkow  
Co-Chairs



### 'SAY IT WITH A BRICK' CAMPAIGN



Jeff Clark

Over 2,000 people or companies have decided to "Say It With A Brick" since we kicked off the campaign in July. The engraved bricks have been laid in the Imperial Courtyard at Maunakea Marketplace.

Individuals purchased bricks to commemorate births, deaths, marriages, graduations, and just about every other occasion. Waimea Falls Park, Sea Life

Park, and Jack In The Box created patterns with their logos engraved over a space of 100 bricks or more. It is worth a trip to Maunakea Marketplace to see these massive logos and to read the humorous and touching messages engraved for the ages.

Proceeds from the sale of bricks will be used to fund Historic Hawai'i Foundation education programs.

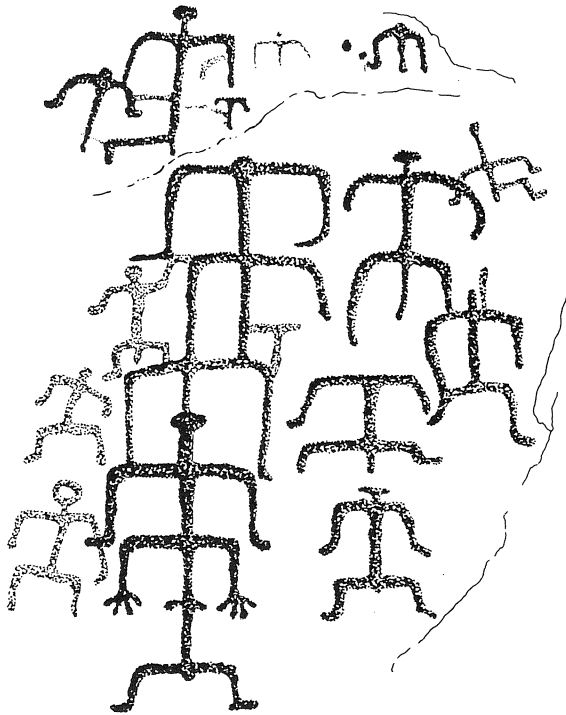
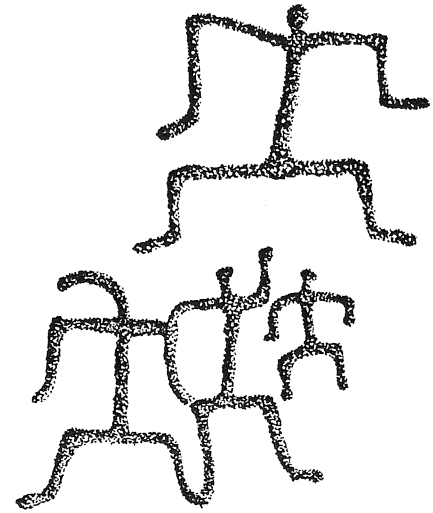
*Maunakea Marketplace developer and past HHF Chairman of the Board Robert H. Gerrell poses with bricks already laid.*



## ANTIQUE SHOW & SALE

More than \$4,400 was raised at the Antique Show & Sale held the weekend of September 22-24 at Neal Blaisdell Center. Space for Historic Hawai'i's booth was donated by the Hawai'i Antique Dealers Association and a plethora of dealers and individuals donated antiques. Forty-eight volunteers, including antique appraiser Ryk Burgess, helped out and ensured the event was successful.

Kevin Dooley, Chair



## RALSTON'S ANTIQUE AUCTION

Antiques were good to us last year...and so was Rick Ralston. On June 10 the active historic preservationist and Crazy Shirts president held an antique auction at his 'Aiea warehouse, and donated part of the proceeds to Historic Hawai'i. The Foundation received nearly \$11,000! Twenty-three volunteers were on hand to help out with the auction, which by day's end had developed into a genuinely festive event.

## CHARLIE CHAN'S MURDER MYSTERY

Wo Fat restaurant was the scene of the crime, and Historic Hawai'i members and guests were given the opportunity to figure out "whodunit" and help the Foundation at the same time via the "Charlie Chan's Murder Mystery" benefit in May. This event combined an exercise in deduction with an eight-course meal in one unforgettable evening in historic Chinatown.

Linda Fulgenzi, Chair



## MAIN STREET HAWAI'I

### "Celebrating Our Successes"

Main Street Hawai'i is an economic revitalization program for small towns that Historic Hawai'i has administered for the past eight years. The philosophy of the Main Street Program encompasses four points: organization, promotion, design, and economic restructuring. Its purpose is self-help, providing the resources to communities to enable them to learn how to apply the principles of the Main Street philosophy to their downtown revitalization efforts.

### DESIGN REVIEW

In 1989 Main Street Hawai'i's statewide program included a series of design review workshops in all counties to assist the implementation of design guidelines. Nore Winter, a nationally recognized consultant in preservation and urban design, conducted the workshops for public sector staff who are most involved with design issues.

### OTHER WORKSHOPS

Mini-training and informational workshops for towns, Main Street community members, and staff were also held. Technical assistance was provided by Main Street Hawai'i staff and resource persons provided solutions for challenges.

Goals and objectives workshops were held in both Hale'iwa and Kaunakakai. Main Street Hawai'i staff led the participants in targeting the roles of each of the four points of the Main Street program, participants worked together to create a vision for their town, and initial timeline workplans were established for the realization of that vision.

### MAIN STREET TOWNS

Downtown Hilo promotional activities attracted community-wide attendance throughout the year. There were four privately-funded building rehabilitations, as well as the interior remodeling, painting, and facade repair of 27 existing structures. Thirty-five new businesses located downtown in 1989.

Wailuku has been very successful in attracting a record number of new businesses to its commercial center, with fifty-six openings counted in 1989. A variety of well-attended promotional

sources to evaluate development plans for the West Kaua'i area and solicited data from individuals and firms in the area. The data was then assembled on a map as a giant graphic exhibit. The use of this visual tool will help dispel rumors and promote understanding of development plans for West Kaua'i. The 1989 Captain Cook Festival was the largest held in the history of the yearly special event.

Hale'iwa was accepted as O'ahu's first Main Street town on August 23, 1989. The new town counts historic registration procedures for the Waialua Court House, completion of a design study through the University of Hawai'i School of Architecture, filing of its nonprofit status, and the launch of a comprehensive market analysis, funded by Main Street Hawai'i, among its successes. Special events, which included the first annual Christmas window display contest and a block party, were exciting downtown activities for both residents and visitors. Extensive media coverage of Hale'iwa activities has helped generate enthusiasm for the new program.



*A building in downtown Hilo gets a new canopy.*

activities were enjoyed by an island-wide audience and continuous press coverage helped promote the revitalization of Wailuku Town.

The year 1989 also saw the rehabilitation of five existing structures and the completion of two new buildings in the downtown core.

The Moloka'i Chamber of Commerce in **Kaunakakai** is sponsoring the Main Street organization and working committees have been formed for each of the four points of the Main Street philosophy.

**West Kaua'i** received assistance from Main Street Hawai'i Committee volunteers who served as technical re-

### CHINATOWN

Nine meetings were held by the Chinatown Ad Hoc Committee to update existing information about the historic district as a basis for future planning. It will be used to develop a vision for the Chinatown area that can be developed into a community-wide effort, based on a greater awareness of the area's history.

L. Russell Mitten, II  
Chair







# 1989 FINANCIAL STATEMENT

## STATEMENTS OF ASSETS AND LIABILITIES

(arising from cash transactions)  
December 31

ASSETS	1989			1988		
	General Operating Funds			General Operating Funds		
	Unrestricted	Restricted	Total	Unrestricted	Restricted	Total
Cash (includes certificates of deposit of \$155,000 for 1989 and \$30,106 for 1988)	\$ 151,606	\$ 88,522	\$ 240,128	\$ 132,813	\$ 31,246	\$ 164,059
Fixed assets	35,375	7,436	42,811	32,325	4,766	37,091
Less accumulated depreciation	23,518	1,995	25,513	18,731	698	19,429
	<u>11,857</u>	<u>5,441</u>	<u>17,298</u>	<u>13,594</u>	<u>4,068</u>	<u>17,662</u>
	<u>\$ 163,463</u>	<u>\$ 93,963</u>	<u>\$ 257,426</u>	<u>\$ 146,407</u>	<u>\$ 35,314</u>	<u>\$ 181,721</u>
LIABILITIES AND FUND BALANCE						
Liabilities						
Due to joint venture partner	\$ 1,037	\$ —	\$ 1,037	\$ 1,037	\$ —	\$ 1,037
Deferred revenue	3,000	—	3,000	9,000	—	9,000
Fund balance	159,426	93,963	253,389	136,370	35,314	171,684
	<u>\$ 163,463</u>	<u>\$ 93,963</u>	<u>\$ 257,426</u>	<u>\$ 146,407</u>	<u>\$ 35,314</u>	<u>\$ 181,721</u>

## STATEMENTS OF REVENUES AND EXPENDITURES

	1989			1988		
	General Operating Funds			General Operating Funds		
	Unrestricted	Restricted	Total	Unrestricted	Restricted	Total
Revenues						
Fund-raising activities	\$ 245,308	\$ —	\$ 245,308	\$ 78,620	\$ —	\$ 78,620
Membership dues	180,804	—	180,804	174,574	—	174,574
Contributions	33,189	—	33,189	5,966	—	5,966
Magazine Advertising	5,828	—	5,828	9,457	—	9,457
Preservation projects	—	359,604	359,604	—	158,796	158,796
Public education	16,237	—	16,237	21,964	—	21,694
Interest	21,000	—	21,000	12,614	—	12,614
	<u>502,366</u>	<u>359,604</u>	<u>861,970</u>	<u>303,195</u>	<u>158,796</u>	<u>461,991</u>
Expenditures						
Salaries and wages	127,391	—	127,391	104,910	—	104,910
Cost of fund-raising activities	182,235	—	182,235	27,993	—	27,993
Depreciation	4,910	—	4,910	4,566	—	4,566
Insurance	12,584	—	12,584	9,829	—	9,829
Membership	2,872	—	2,872	4,609	—	4,609
Office supplies	13,590	—	13,590	13,617	—	13,617
Postage	5,890	—	5,890	5,610	—	5,610
Preservation projects	—	299,374	299,374	—	292,911	292,911
Professional	6,494	—	6,494	2,992	—	2,992
Public education	79,917	—	79,917	72,755	—	72,755
Rent	27,258	—	27,258	12,515	—	12,515
Repairs and maintenance	1,851	—	1,851	1,922	—	1,922
Taxes	11,397	—	11,397	9,391	—	9,391
Telephone	4,443	—	4,443	3,952	—	3,952
Loss from disposal of fixed asset	59	—	59	—	—	—
	<u>480,891</u>	<u>299,374</u>	<u>780,265</u>	<u>274,661</u>	<u>292,911</u>	<u>567,572</u>
EXCESS OF REVENUES (EXPENDITURES)	\$ 21,475	\$ 60,230	\$ 81,705	\$ 28,534	\$ (134,115)	\$ (105,581)

## STATEMENTS OF CHANGES IN FUND BALANCE

	1989			1988		
	General Operating Funds			General Operating Funds		
	Unrestricted	Restricted	Total	Unrestricted	Restricted	Total
Fund balance at beginning of year	\$ 136,370	\$ 35,314	\$ 171,684	\$ 102,716	\$ 174,549	\$ 277,265
Excess of revenues (expenditures)	21,475	60,230	81,705	28,534	(134,115)	(105,581)
Transfer to (from) funds	1,581	(1,581)	—	5,120	(5,120)	—
Fund balance at end of year	<u>\$ 159,426</u>	<u>\$ 93,963</u>	<u>\$ 253,389</u>	<u>\$ 136,370</u>	<u>\$ 35,314</u>	<u>\$ 171,684</u>

The above figures are preliminary pending the completion of our annual audit by Grant Thornton.



## MEMBERSHIP

### ANNUAL MEETING

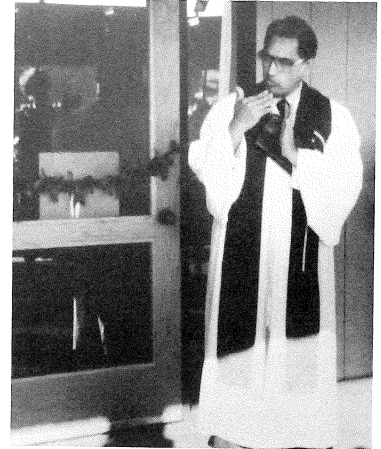
Historic Hawai'i's annual gathering was held on April 18 at the governor's residence, Washington Place. Trustee Lynne Waihe'e and her husband, the honorable Governor John Waihe'e, hosted 400 people. In addition to hearing the annual report and electing new Trustees, we celebrated the Foundation's 15th anniversary. Kaulana's Trio entertained members and guests, and food was provided by The Palm Grill.

### OPEN HOUSE

On Valentine's Day, Historic Hawai'i held an open house celebration and annual volunteer party. Over 300 friends were honored at the Ward Warehouse and helped us celebrate the move into our new offices as well as our program successes. The Foundation's workspace received a Hawaiian blessing by the Reverend David Kaupu. There were delicious pūpū and entertainment was provided by the Aloha Airlines Serenaders. The happening was an excellent opportunity for members and staff to socialize, and mirth was the general order of the day.

Christina Hassell-Martin, Chair

Jean Kellerman & Joetta Jackson, Co-Chairs



Dion Coschigano

*The Reverend David Kaupu helped us open our new offices.*

### MEMBERSHIP TOURS

#### Heritage Associates Events

The Heritage Associates went on a tour to Kohala and Kamuela on the Island of Hawai'i February 10-2, 1989. Among the historical sites they visited on our youngest island were the Pu'ukohola *heiau*, Lapakahi State Historical Park, Old Mahukona Wharf, the old fishing villages of Kapa'a and Hā'ena, Mo'okini *heiau* and Kamehameha's birthplace (with Kahuna Nui Leimomi Mo'okini Lum), and several historic churches.

On August 29, the Heritage Associates were invited to a reception at Graystones. Kathy and Bill Mills opened their historic home to allow our guests to experience first hand one of the last remaining examples of Queen Anne architecture in Honolulu. Also known as the Alfred Hocking House (named for the man who built it in 1904), Graystones was restored in 1984 by Rick Ralston. Fifty-four Heritage Associates took the opportunity to visit this historic building, which is listed on both the State and National Registers of Historic Places.

#### General Membership Events

On March 25 Historic Hawai'i's members paid a visit to the Hawaiian Railway Society Museum out in 'Ewa Beach on O'ahu. Fifty-one members saw antique locomotives and various types of railway cars and equipment used during our plantation, military, and industrial railroading days. The highlight of the trip was a 45-minute ride on a train built for the Navy during the Second World War. The tour was a big success and we've been invited to make this an annual event!

Due to the overwhelming response from our General Membership, we had to make two trips to Kalaupapa National Historical Park on Moloka'i to accommodate all the members who expressed interest in participating in this unforgettable experience. In all, 36 members paid tribute to the late Father Damien on November 4 and 11. We visited the recently restored St. Philomena Church (also known as Father Damien's church), saw the monuments erected in memory of Father Damien and Mother Marianne Cope, and rode through the old fishing village of Kalaupapa, home of the forsaken. The excursions to Kalaupapa were so successful, Historic Hawai'i plans an additional trip there in 1990.

### HERITAGE ASSOCIATES

We are grateful to our major individual donors whose contributions of \$1,000 or more a year help to strengthen and expand programs. In addition to being invited to all membership activities, Heritage Associates also enjoy special field trips, lectures, and receptions.

### CORPORATE HERITAGE ASSOCIATES

Corporate Heritage Associates are businesses making major contributions of \$1,000 or more per year. They are the major source of support for new programs.



Dion Coschigano

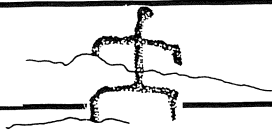
*Members explore the grounds of restored St. Philomena Church in Church in Kalaupapa.*

### GENERAL MEMBERSHIP

Those who comprise our General Membership are the largest group of Historic Hawai'i Foundation supporters and provide an essential base of support to maintain ongoing programs.

### VOLUNTEERS

It is a basic fact of life at Historic Hawai'i Foundation that we need our volunteers. They help with special events, they offer their expertise on various projects, and they even put in time at the office. Our volunteers are our lifeblood.



## 1989 MEMBERSHIP

### HERITAGE ASSOCIATES

Mrs. Barbara Cox Anthony  
 Ms. Helen Baker  
 Mr. & Mrs. Roy S. Blackshear  
 Mr. & Mrs. William M. Borthwick, Jr.  
 Mrs. W. Herbert Bretzlaff  
 Mr. & Mrs. Kenneth F. Brown  
 Mrs. Mary Lou J. Carter  
 Dr. Ann B. Catts  
 John F. Chalmers, M.D.  
 Mrs. Dorothea Giron Chandler  
 Dr. Michaelyn P. Chou  
 Mr. & Mrs. Henry B. Clark, Jr.  
 Mr. & Mrs. David Cole  
 Mrs. Allyn Cole, Jr.  
 Mr. & Mrs. Bill Cook  
 Mr. & Mrs. Samuel A. Cooke  
 Mr. & Mrs. Herbert C. Cornuelle  
 Mr. Dale G. Cripps  
 Ms. Alicia C. Davies  
 Mrs. Bayard H. Dillingham  
 Mr. & Mrs. Herbert S. Dimmitt  
 Mr. Peter G. Drewlin  
 Mr. & Mrs. Charles L. Dunlap  
 Mr. & Mrs. Dean A. Eyre, Jr.  
 Mrs. T. N. Fairbanks, Jr.  
 Mr. Thomas M. Foley  
 Ms. Linda Fulgenzi  
 Mr. & Mrs. James F. Gary  
 Mr. & Mrs. John Goss  
 Mrs. Louise Guard  
 Mr. Chris J. Haig  
 Mr. David M. Haig  
 Mr. & Mrs. Warren Haight  
 Mrs. Ruth K. Hanner  
 Mr. & Mrs. J. Dean Hazen  
 Mrs. James C. Hibbard  
 Mr. & Mrs. John Hoogs  
 Mrs. Susan Hulick  
 Mr. Arthur C. Hyde  
 Mr. & Mrs. Sheridan Ing  
 Mrs. Cecily F. Johnston  
 Miss A. Kekaulike Kawananakoa  
 Mr. E. K. Kawananakoa  
 Miss Poomai Kawananakoa  
 Mrs. Spencer Leineweber  
 Mr. & Mrs. Warren K.K. Luke  
 Mr. & Mrs. Malcolm MacNaughton  
 Mr. & Mrs. Donald C. Machado  
 Mr. & Mrs. Benjamin L. Marx, Jr.  
 Mr. & Mrs. Jim McMillan  
 Dr. & Mrs. Tom M. McMillan  
 Mrs. Neva S. McMullan  
 Ms. Nora S. Meijide  
 Mr. & Mrs. Bill Mills  
 Mr. & Mrs. Edward A. O'Neill  
 Mr. C. Dudley Pratt, Jr.  
 Mr. James C. Reynolds  
 Mrs. Joan Rohlfing  
 Mr. & Mrs. Raymond L. Salley  
 Mr. & Mrs. William W. Saunders  
 Mrs. Jean W. Scripps  
 Mr. & Mrs. Michael G. Sheehan  
 Mr. James C. Shingle  
 Mr. Brian J. Shuckburgh, ASID  
 Mr. & Mrs. Allen M. Stack  
 Mr. & Mrs. John Stevenson  
 William Stryker & Sharon Weiner  
 Mr. & Mrs. Andre Tatibouet  
 Mrs. Annalie Tatibouet  
 Mrs. Barbara B. Tilley  
 Mr. & Mrs. Thurston Twigg-Smith  
 Mr. & Mrs. Herman V. von Holt  
 Mr. & Mrs. G. Herbert Walther  
 Drake W. Will, M.D.  
 Mr. & Mrs. Roderick T. Wilson  
 Mrs. Cenric N. Wodehouse  
 Mr. Hei Wai Wong

### SPONSOR

Mr. & Mrs. George Beckley  
 Ms. Diane J. Plotts

### PARTICIPATING

Mr. Carter Black  
 Mrs. A. Hartwell Carter  
 Mrs. Anne R. Clifton  
 Mr. & Mrs. Conrad G. Conrad III  
 Mr. Gordon H. Damon  
 Mr. & Mrs. David L. Dressel  
 Dr. & Mrs. Roy Hofheinz, Jr.  
 Mr. Lawrence P. Horwitz  
 Mr. George H. Mason  
 Mrs. George H. Moody  
 Miss Jacqueline Perry  
 Mr. & Mrs. Nathaniel R. Potter, Jr.  
 Mr. Robert J. Rawson, Jr.  
 Mr. John P. Spierling  
 Mr. & Mrs. George Sutherland  
 Mr. & Mrs. Arthur C. Tokin

### CONTRIBUTING

Mr. & Mrs. Albert R. Abramson  
 Ms. Jeanne Anderson  
 Mr. Gene Axelrod  
 Ms. Virginia L. Baird  
 Mr. & Mrs. John A. Baker, Jr.  
 Kenneth P. Barrow, Esq.  
 Mr. & Mrs. Douglas S. Beatty  
 Mrs. John D. Bellinger  
 Mr. & Mrs. James A. Bier  
 Mrs. Cobey Black  
 Mr. Bob Bosley  
 Mrs. Anthony B. Boynton  
 Mrs. Gladys A. Brandt  
 Mr. & Mrs. Reynolds G. Burkland  
 Mr. & Mrs. J. Russell Cades  
 Mr. & Mrs. Sam Caldwell  
 Mrs. J. Kenneth Cameron  
 Mr. & Mrs. Donn W. Carlsmith  
 Mr. & Mrs. Daniel H. Case  
 Mr. Keola Childs  
 Dr. & Mrs. Robert Kulani Childs  
 Mr. Robert C. Ching  
 Mr. & Mrs. Sungdai Choi  
 Mr. Elroy J. Chun  
 Mrs. Becky Connable  
 Mr. & Mrs. John H. Connors  
 Dr. Ian M. Cooke  
 Mr. & Mrs. Joseph P. Cooke, Jr.  
 Mrs. Joan G. Damon  
 Mr. Robert Davis  
 Mr. & Mrs. J. Arthur de Boer  
 Mr. & Mrs. Edward J. Doty  
 Mr. & Mrs. Charles F. DuBois  
 Mr. James R. Dunlop  
 Mr. & Mrs. Wayne E. Ellis  
 Mr. & Mrs. Gerald W. Fisher, Jr.  
 Mrs. Muriel M. Flanders  
 Mrs. Jean Moores Frank  
 Mr. & Mrs. Robert M. Fujimoto  
 Mr. & Mrs. Frank Geiger  
 Mrs. June V. Gibson  
 Mr. & Mrs. Donald W.Y. Goo  
 Mr. Richard W. Gushman II  
 Mrs. Lyle Guslander  
 Ms. Laurinda Hadsell  
 Mr. Michael E. Haig  
 Mr. & Mrs. Frank S. Haines  
 Mr. John M. Hara  
 Mr. Willard T. Haraguchi  
 Mr. & Mrs. Joseph W. Hartley, Jr.  
 Mr. Larry E. Helber  
 Mr. & Mrs. Richard Henderson  
 Mr. & Mrs. Timothy C. Herpel  
 Mr. Kevin Hildebrandt  
 Mr. & Mrs. Melvin M. Hirose  
 Mr. & Mrs. Chico Holland  
 Mr. Charles H. Holt  
 Mr. Ray Hulick  
 Mr. & Mrs. Alan W. Hyman  
 Ms. P. D. Jacques  
 Mr. & Mrs. Alan C. Kay  
 Ms. Susy King  
 Mr. & Mrs. F. W. Klebahn  
 Mr. & Mrs. John Lacy  
 James T. Lambeth, M.D.

Mrs. Howard Lang  
 Mrs. Karen A. Latham  
 Mr. & Mrs. William H. Livingston  
 Gerrit R. Ludwig, M.D.  
 Mrs. Roberta P. MacNaughton  
 Dr. & Mrs. Fujio Matsuda  
 Mr. & Mrs. Eric McD. Moir  
 Mr. & Mrs. John McGrath  
 Mr. Mike McKenna  
 Dr. & Mrs. William F. McKenzie  
 Mr. Gregory A. Mills  
 Mrs. Esther Jantzen Moore  
 Mr. & Mrs. R. D. Moore  
 Mrs. Virginia Reid Moore  
 Mrs. Patricia Morriss  
 Mr. Kevin J. Mulkern  
 Mrs. William E. Mussett  
 Dr. & Mrs. William Najjar  
 Mr. & Mrs. Vernon W. Newbold  
 Mrs. Herman D. Nichols  
 Mr. George L. Nottingham  
 Mr. & Mrs. Emil A. Offer  
 Ms. Linda L. Pall  
 Judge & Mrs. Martin Pence  
 Ms. Gail Perry  
 Mr. Robert J. Pfeiffer  
 Mr. & Mrs. Charles J. Pietsch  
 Mr. & Mrs. Henry Rice  
 Mr. & Mrs. Charles Robertson  
 Ms. Jean E. Rolles  
 Dr. Paul H. Rosendahl, Ph.D.  
 Mr. & Mrs. Peter Ross  
 Mr. Dwight M. Rush  
 Mr. Rocco Sansone  
 Mr. & Mrs. George A. Schattauer  
 Mrs. Helene W. Scholl  
 Mrs. Louis T. Self  
 Mr. & Mrs. John Anthony Serrao  
 Mrs. Maryanna G. Shaw  
 Mr. R. Sanderson Sims  
 Dr. & Mrs. Arthur Y. Sprague  
 Mr. & Mrs. David K. Sproat  
 Dr. & Mrs. E. C. Sterling  
 Mr. & Mrs. E. Grant Story  
 Mr. George W. Sumner, Jr.  
 Ms. Charlotte Temple  
 Mrs. Joseph Z. Todd  
 Mrs. Arneil Tout  
 Mr. Joe Tripp  
 Mrs. Joanne V. Trotter  
 Mr. & Mrs. Robert Vanek  
 Mr. Robert T. Watts  
 Mr. & Mrs. Gaylord H. Wilcox  
 Mr. & Mrs. Leighton J. Wilkie  
 Mrs. Norma M. Williams  
 Ms. Jean E. Wilson  
 Dr. & Mrs. William B. Wilson, Jr.  
 Mr. & Mrs. Robert C. Wo  
 Mr. Chatt G. Wright  
 Mr. & Mrs. A. James Wriston, Jr.  
 Mrs. John Youell

### SUPPORTING

Mr. & Mrs. James J. Ackerman  
 Mr. & Mrs. Davis E. Adler  
 Mr. & Mrs. Henry A. Alexander  
 Ms. Barbara Allin  
 Mr. & Mrs. R. Alex Anderson  
 Mr. & Mrs. Robert A. Anderson, Jr.  
 Mr. Edward R. Aotani  
 Mrs. Charles W. Atkinson  
 Mrs. Donald E. Bahrenburg  
 Mr. & Mrs. M. Bailey  
 Mr. & Mrs. W. J. Baldwin  
 Miss Nancy Bannick  
 Mr. & Mrs. Clinton B. Basler  
 Mr. & Mrs. George H. Batt  
 Mr. Alan C. Beall  
 Mrs. Florence H. Beard  
 Ms. Cynthia G. Blackwell  
 Mr. & Mrs. David Boak  
 Mrs. Charles Boettcher II  
 Mr. & Mrs. Ben H. Bond, Jr.  
 June & Giselle Borland  
 Miss Lindy Boyes  
 Mr. & Mrs. Alan Lowrey Brown

Mr. H. William Burgess  
 Mr. & Mrs. Henry C. Burgess  
 Mrs. Elsie McG. Burke  
 Ms. Joanna Burke  
 Mr. Henry W. Buscher  
 Mr. & Mrs. Paul R. Cassidy  
 Mr. & Mrs. Richard J. Chalmers  
 Mr. & Mrs. Robert S. Ching  
 Dr. & Mrs. Willard T. Chow  
 Mrs. Robert H. Christy  
 Adm. & Mrs. Bernard A. Clarey  
 Mr. & Mrs. Richard Clifton  
 Mr. & Mrs. Warner Cosgove, Jr.  
 Ms. Mazeppa K. Costa  
 Mr. & Mrs. Richard H. Cox  
 Mrs. C. Wilbur Crow  
 Mr. & Mrs. Randolph Crossley  
 Mr. & Mrs. R. Dougal Crowe  
 Mr. & Mrs. Thomas M. Culbertson  
 Mr. & Mrs. David W. Curtis  
 Mr. & Mrs. Martin L. Dana  
 Dr. Harry K. Davis  
 Mr. & Mrs. Donald R. Dawson  
 Ms. Beam DeLeon  
 Mrs. Sybil Dominis Dean  
 Dr. & Mrs. W. H. Dorrance  
 Mrs. Alberta G. Dyson  
 Mrs. Harold Eichelberger  
 Mr. & Mrs. Evan C. Evans  
 Mr. Tom Fanning, AIA  
 Mr. John E. Finney  
 Joel & Vasant Fithian  
 Mr. Peter S. Fithian  
 Mr. & Mrs. Ferdinand F. Freitas  
 Ms. Jocelyn Fujii  
 Capt. & Mrs. Frank L. Fullaway  
 Mr. & Mrs. Charles C. Gates  
 Ms. Victoria Geist  
 Mr. & Mrs. Martin Gendel  
 Ms. Cynthia Gillette-Wenner  
 Mr. & Mrs. Holbrook Goodale  
 Mr. & Mrs. Robert S. Gordon  
 Mr. Robert Bruce Graham, Jr.  
 Mr. James S. Gray  
 Mr. & Mrs. Sherwood R. H. Greenwell  
 Mrs. Iris Hallaran  
 Miss Liz Hamilton  
 Mr. & Mrs. Arthur L. Harris  
 Ms. Doris Harrison  
 Mr. & Mrs. Mark H. Hastert  
 Mr. & Mrs. Fred Hedemann  
 Mr. & Mrs. Lawrence S. Heim  
 Mr. & Mrs. Chris R. Hemmester, Jr.  
 Mrs. Margaret M. Hendrie  
 Mrs. Masuye S. Hew  
 Mr. & Mrs. William Hoffstot, Jr.  
 Ms. Pegge Hopper  
 Mr. & Mrs. Arthur G. Homer, Jr.  
 Adm. & Mrs. J. Hyland  
 Ms. Connie Itagaki  
 Mrs. Muriel Jacobson  
 Mrs. Marjorie Irwin James  
 Mr. & Mrs. Mark R. James  
 Mr. & Mrs. Douglas L. Jocelyn  
 Mr. Gordon L. Johnson, Jr.  
 Mr. & Mrs. J. R. Judd, Jr.  
 Mr. Ernest K. Kai  
 Ms. Marge S. Kam  
 Mrs. Hazel K. Kauahikaua  
 Mr. George H. Kekoolani, Jr.  
 Dr. & Mrs. Robert D. Kemble  
 Mr. & Mrs. Albert Kerry  
 Mrs. Mary W. Kimball  
 Mrs. Garfield King  
 Mr. Alton Kuioka  
 Mr. & Mrs. Tony Kunimura  
 Mr. & Mrs. Frank Kunz  
 Mr. & Mrs. Thomas K. Lalakea  
 Ms. Helen Rebecca Larson  
 Miss Teresa Law  
 Mrs. Ralph G. Leavitt  
 Mr. Alan Prescott Lee  
 Mr. & Mrs. Richard M. Libbey  
 Mr. & Mrs. Carl Lindquist  
 Ms. Lisa Livingston  
 Gene & Sandy Long  
 Miss Diana Lord  
 Mrs. Robert S. Lowrey  
 George & Kate Lowson  
 Mr. Douglas P. Luna

Mr. Kelsey Maddox-Bell  
 Mr. & Mrs. Michael D. Maddox  
 Mr. George D. Manning  
 Mr. W. E. Manning  
 Mr. & Mrs. Robert J. Marsh  
 Mrs. Sarah Ann Martin  
 Mr. & Mrs. Watters O. Martin, Jr.  
 Mrs. Vern I. McCarthy, Sr.  
 Mrs. Ann Welch McDonald  
 Ms. Nancy I. McMullan  
 Col. & Mrs. K. McMurdo  
 Dr. & Mrs. Phillip I. McNamee  
 Mr. Ken Melrose  
 Mrs. Leon E. Mermood  
 Col. & Mrs. Jerry E. Merrill  
 Mr. & Mrs. Francis S. Morgan  
 Mr. & Mrs. James F. Morgan, Jr.  
 Mr. & Mrs. Stewart Morris  
 Brig. Gen. F. P. Munson  
 Ms. Virginia D. Murison, AIA  
 Ms. Diane A. Nakamura  
 Capt. & Mrs. Richard J. Nesbitt  
 Dr. & Mrs. Victor J. Niiranen  
 Mrs. Lenore Nims O'Brien  
 Dr. & Mrs. E. J. O'Shaughnessy  
 Mr. & Mrs. Edwin T. Okada  
 Mr. & Mrs. Irvine H. Paris  
 Mr. & Mrs. Thomas H. Parry  
 Mr. & Mrs. William W. Paty, Jr.  
 Ms. Nancy L. Peacock  
 Mr. & Mrs. John Pechauer  
 Dr. James Penoff  
 Mr. & Mrs. Alan M. Peterson  
 Mr. & Mrs. Joseph W. Phillips  
 Mr. & Mrs. David T. Pietsch, Sr.  
 Mr. & Mrs. Andrew Poepoe  
 Miss Cecilia Ponte  
 Mr. David W. Pratt  
 Ms. Lenore M. Prehler  
 Mr. & Mrs. William F. Quinn  
 Mr. & Mrs. H. Monty Richards, Jr.  
 Mr. William S. Richardson  
 Dr. & Mrs. Robert G. Rigler  
 Mr. & Mrs. Kenneth S. Robbins  
 Mr. Russell S. Robinson  
 Mr. & Mrs. Richard H. Rodby  
 Mrs. Lois W. Rosebrook  
 Mr. & Mrs. Robert H. Rotz  
 Mr. Peter E. Russell  
 Mr. & Mrs. Michael Ryan  
 Mr. John K. Schofield & Barbara Urner  
 Mr. & Mrs. J. Schucart  
 Ms. M. Malia Schwartz  
 Mr. & Mrs. John G. Severson  
 Mr. & Mrs. Seymour W. Shingle  
 Mr. & Mrs. Harold Sinclair  
 Miss Miriam E. Sinclair  
 Mr. Fredrick Y. Smith  
 Mrs. Mary Cooper Smith  
 Mr. & Mrs. Peter S. Smith  
 Mr. S. Steven Sofos  
 Mr. David Sox  
 Mr. Charles C. Spalding  
 Mr. Edwin B. Stevens  
 Mrs. Campbell W. Stevenson  
 Mrs. Paulette Stone  
 Ms. Hazel D. Sutherland  
 Mr. & Mrs. William Tetmeyer  
 Cynthia Thielen, Esq.  
 Ms. Jean Thomas  
 Mr. & Mrs. Lowell Thomas, Jr.  
 Mr. & Mrs. Thomas T. Triggs  
 Mrs. Herbert G. Van Orden  
 Mr. & Mrs. Ralph Villiers  
 Mr. & Mrs. Wendell W. Wade  
 Mrs. Norah E. Walker  
 Mr. & Mrs. Roger Wall  
 Mr. & Mrs. Robert E. White, Jr.  
 Mr. Harry A. Whitten  
 Mrs. Elizabeth D. Wick  
 Mrs. Allen Wilcox, Jr.  
 Mrs. Virginia Wirtz  
 Rev. Edith H. Wolfe  
 Mrs. Hart D. Wood

## FAMILY

Mrs. Marianne Abrigo  
 Dr. & Mrs. Milton J. Ackerman  
 Mr. & Mrs. Charles W. Adcock  
 Mr. & Mrs. Walter M. Africa, Jr.  
 Mr. & Mrs. Robert Akinaka  
 Dr. Lawrence Allman  
 Capt. & Mrs. W. Bruce Althoff  
 Mr. & Mrs. Andrew Andersen, Jr.  
 Mr. & Mrs. Edward P. Anderson

Mr. & Mrs. Marvin J. Anderson  
 Dr. & Mrs. Matthew Anderson  
 Mr. & Mrs. Goro Arakawa  
 Miss Ellie Arden  
 Mr. & Mrs. James H. Armitage  
 Mr. & Mrs. John R. Armitage  
 Mr. Kalani Asam  
 Mr. & Mrs. Harry Ashendorf  
 Mr. & Mrs. Geo. Wm. Bachmann III  
 Mr. & Mrs. Darryl Bardusch  
 Mr. & Mrs. Waldron Barrere  
 RAdm. & Mrs. E. H. Batcheller  
 Mr. & Mrs. Vincent Beaver  
 Mr. & Mrs. Waldemar F. Bechert  
 Mr. & Mrs. John Bedish  
 Mr. & Mrs. Ben B. Beeson  
 Mr. & Mrs. Joseph Bender  
 Dr. & Mrs. Robert Berg  
 Dr. Bernard Bergstein  
 Mr. & Mrs. M. A. Blackburn  
 Mr. & Mrs. Jesse E. Blackwell  
 Mr. & Mrs. Lachlan F. Blair  
 Mr. & Mrs. R. Charles Bocken  
 Mr. & Mrs. Richard H. Booth  
 Mr. & Mrs. Charles Bostwick  
 Mr. & Mrs. Waldo Bowman  
 Mrs. Elizabeth S. Bowyer  
 Mr. & Mrs. Greg Boyer  
 Mr. & Mrs. Sevath E. Boyum  
 Mr. & Mrs. Jack Bratton  
 Mr. & Mrs. Ben Briskey  
 Mr. & Mrs. Fred Brossy, Jr.  
 Mrs. C. E. S. Burns, Jr.  
 Gordon & Mary Burton  
 Capt. & Mrs. John H. Caldwell  
 Mr. David L. Callies & Dr. Jane Starn  
 Ms. Alice H. Cameron  
 Mr. & Mrs. Robert W. Campbell  
 Mr. & Mrs. Edward H. Campbell III  
 Mr. & Mrs. David Carey III  
 Mr. & Mrs. William L. Carpenter  
 Mrs. E. L. Carter  
 Mr. & Mrs. Edward H. Carus  
 Mr. & Mrs. Jim A. Casey  
 Mr. & Mrs. John C. Cavanagh  
 Mr. & Mrs. E. R. Champion  
 Dr. & Mrs. Murray Chapman  
 Ms. Carolyn Ching  
 Mr. & Mrs. Philip H. Ching  
 Mr. & Mrs. Alfred Noalani Chong  
 Mr. & Mrs. Mel Choy  
 Mr. & Mrs. Rush S. Clark  
 Dr. & Mrs. William T. Cleghorn  
 Dr. & Mrs. Jerry D. Colling  
 James Conti & Noel Sutherland  
 Adm. & Mrs. Ralph E. Cook  
 Capt. & Mrs. James I. Cook, Jr.  
 Mr. & Mrs. William S. Coonley  
 Mr. & Mrs. Clifford D. Cooper  
 Mr. & Mrs. Eugene Cotter  
 Mr. & Mrs. Doak C. Cox  
 Ms. Helen A. Craig  
 Mr. & Mrs. Freddy Cruz  
 Mr. & Mrs. Theodore Dabagh  
 Mr. & Mrs. James M. Daniel  
 Mr. & Mrs. Wilfred D. Darling  
 Mr. & Mrs. Gilbert N. Davis  
 Mr. & Mrs. S. B. Davis  
 Mr. & Mrs. Sadami Deai  
 Mr. & Mrs. Ronald H. Deisseroth  
 Mr. & Mrs. Nicholas Detor  
 Mr. & Mrs. John P. Dinmore  
 Col. & Mrs. Wales S. Dixon  
 Mr. & Mrs. Kevin Dooley  
 Mr. & Mrs. Samuel F. Dowling  
 Mr. & Mrs. Joseph M. Earing  
 Mr. & Mrs. John H. Earle  
 Mr. & Mrs. Richard Eber  
 Mr. & Mrs. J. Leon Edel  
 Mr. & Mrs. William F. Ehrman  
 Mr. & Mrs. R. D. Emory  
 Mr. & Mrs. Henry Eng  
 Judge & Mrs. Raymond Engle  
 Mr. & Mrs. Greg Etter  
 Mr. & Mrs. David Evans  
 B. M. Eveleth, M.D.  
 Mr. & Mrs. Michael A. Faye  
 Dr. & Mrs. Leabert R. Fernandez  
 Mrs. Sharon Fialco  
 Dr. & Mrs. Merle Fischlowitz  
 Mr. & Mrs. Kenneth Fiske  
 Dr. & Mrs. Ken Fletcher  
 Mr. & Mrs. Alan Freitas  
 Mr. & Mrs. L. Richard Fried, Jr.  
 Mrs. Carol Frifeldt  
 Mr. & Mrs. Frederick H. Furer  
 Mr. & Mrs. Ben Gamundoy  
 Mr. & Mrs. John C. Garrett  
 Col. & Mrs. Ron Garten

Mr. & Mrs. Paul Giblin  
 Mr. & Mrs. Joseph A. Gilman III  
 Dr. & Mrs. Gregory C. Goetz  
 Dr. & Mrs. Norman Goldstein  
 Dr. & Mrs. Lawrence Gordon  
 Mr. & Mrs. Robert B. Graham, Sr.  
 Mr. & Mrs. Joe G. Grant  
 Mr. & Mrs. William A. Grant  
 Mr. & Mrs. James S. Greenwell  
 Mrs. Susan Guard  
 Ms. Barbara Guidage  
 Mr. & Mrs. Windsor G. Hackler  
 Mr. John Hagar  
 Mr. & Mrs. Lee Ann Hansen  
 Mr. & Mrs. Ron Haranda  
 Mr. & Mrs. Edward A. Harger  
 Mrs. Patricia L. Hartwell  
 Mr. & Mrs. Donald G. Hasenyager  
 Mr. & Mrs. John E. F. Hassell  
 Mr. & Mrs. James J.C. Haynes  
 Mr. & Mrs. Eric Hazelhof  
 Mr. & Mrs. James F. Helmer  
 Mr. & Mrs. George T. Hemmeter  
 Mr. & Mrs. Arthur G. Hernandez  
 Mr. & Mrs. Raymond B. Herrick  
 Mr. & Mrs. Robert S. Hines  
 Ms. Melvyn Ho  
 Mr. & Mrs. William P. Hodgins  
 Mr. & Mrs. John Richard Hofmann, Jr.  
 Mr. & Mrs. T. W. Hogue  
 Mr. & Mrs. Glenn Horiuchi  
 Mr. & Mrs. R. A. Horst  
 Mr. & Mrs. Thomas P. Huber  
 Mr. & Mrs. Don R. Huddleston  
 Mr. Barry S. Hudson  
 Dr. & Mrs. Joseph F. Hughes  
 Mr. & Mrs. Robert H. Hughes  
 Mrs. Lu Hummel  
 Mr. & Mrs. Michael Hurwitz  
 Mrs. Susan Ing  
 Mr. & Mrs. J. W. Ireland  
 Mr. & Mrs. Frederick G. Irwin  
 Maj Gen. & Mrs. Claude T. Ivey  
 Dr. & Mrs. David L. Jellinger  
 Mr. & Mrs. Randy Jensen  
 Mr. & Mrs. Donald Johanos  
 Mr. & Mrs. Donald D. Johnson  
 Mr. & Mrs. Herbert R. Jordan  
 Dr. & Mrs. R. Bruce Joseph  
 Mr. & Mrs. Lloyd C. Kaapana  
 Mr. John S. Kay  
 Mr. & Mrs. Philip S. Keat  
 Mr. & Mrs. Charles J. Keever  
 Mr. & Mrs. Paul Kekuewa  
 Mrs. Keoki Kellerman  
 Ms. Marianne Kent  
 Mr. & Mrs. Richard K. Kingsley  
 Mrs. F. Willard Knapp  
 Rev. Hollinshead T. Knight & Ann Bishop Knight  
 Mr. & Mrs. Fred Kobashikawa  
 Mr. & Mrs. Adi Kohler  
 Mr. & Mrs. Nolan J. Kramer  
 Mr. & Mrs. Steven Kyono  
 Mr. & Mrs. H. Peter L'Orange  
 Mr. & Mrs. Samuel Lamb  
 Mr. & Mrs. Evan C. Lambert  
 Mr. & Mrs. Robert Lamson  
 Mr. & Mrs. John W. Landgraf  
 Mr. & Mrs. Johannes Larsen  
 Mr. & Mrs. Charles H. Larson  
 Dr. & Mrs. Gilbert H. Larson III  
 Mrs. James L. Lawrence  
 Mr. & Mrs. Douglas J. LeGrande  
 Mr. & Mrs. L. M. Leathers  
 Mr. & Mrs. Bay Stewart Leber  
 Mrs. Katherine B. Lee  
 Mr. & Mrs. Gordon Lee, Sr.  
 Mr. & Mrs. Gilbert L. Livingston  
 Mrs. Sandra Lormand  
 Dr. & Mrs. John J. Lowrey  
 Mr. & Mrs. Calvin W. Lui  
 Mr. & Mrs. Lance L. Luke  
 Dr. & Mrs. K.Y. Lum  
 Mr. & Mrs. Bruce S. MacBride  
 Mr. & Mrs. Thomas Mahoney  
 Mr. & Mrs. Martin P. Mangan  
 Dr. & Mrs. G. Patrick March  
 RAdm. & Mrs. Russell Marlor  
 Dr. & Mrs. Charles D. Martin  
 Dr. & Mrs. Donald W. Martin  
 Mr. & Mrs. David E. Matthews  
 Mr. & Mrs. Creighton U. Mattoon  
 Mr. & Mrs. James T. McClellan  
 Mr. & Mrs. Stewart W. McCombs  
 Mr. & Mrs. William J. McCord  
 Dr. & Mrs. James McCutcheon  
 Mr. & Mrs. Jack G. McGuire  
 Mr. & Mrs. Peter W. McKenney  
 Mr. & Mrs. Peter Meldahl

Mr. & Mrs. Gordon K. T. Mew  
 Dr. & Mrs. Jerrold M. Michael  
 Mr. & Mrs. Robert R. Midkiff  
 Mr. & Mrs. Wilson C. Moore, Jr.  
 Mr. & Mrs. H. Fred Mosher  
 Mr. & Mrs. Gilbert Moss  
 Mr. B. J. Mott  
 RAdm. & Mrs. William T. Nelson  
 Mr. & Mrs. John F. Nielsen  
 Mr. Katashi Nose  
 Mr. & Mrs. Justin A. O'Neil  
 Mr. & Mrs. Roy M. Onishi  
 Mr. & Mrs. Donald H. Orndoff  
 Ms. Mary Osaka  
 Mr. & Mrs. R. Bryan Owen  
 Dr. & Mrs. Richard Palmer  
 Mr. & Mrs. Elroy K. Panoke  
 Mr. & Mrs. Rudolph E. Papst  
 Mr. & Mrs. William J. Paris, Jr.  
 Mr. Michael Parker  
 Mr. & Mrs. Edward J. Parnell  
 Mr. & Mrs. Vernon Parrish  
 Mr. & Mrs. James R. Pavelle  
 Mr. & Mrs. Rodgers Peale  
 Mr. & Mrs. James C. Pell  
 Mr. & Mrs. H. Chadsey Penhallow  
 RAdm. & Mrs. H. S. Persons  
 Mr. & Mrs. Ernest N. Peterson  
 Mr. & Mrs. James T. Pettus, Jr.  
 Mr. & Mrs. Thomas N. Piper  
 Mr. & Mrs. Rick Pompilio  
 Mr. & Mrs. Hebden Porteus  
 Mr. & Mrs. Kenneth J. Pratt  
 Mr. & Mrs. Charles D. Pratt, III  
 Ms. Cynthia B. Quisenberry  
 Capt. Samuel M. Randall  
 Mr. & Mrs. John Ritchie  
 Mr. & Mrs. Carlos E. Rivas  
 Mrs. Marjorie P. Roseberry  
 Mr. & Mrs. Iain Munro Ross  
 Mr. & Mrs. John Ryman  
 Mr. & Mrs. Jim Samuelson  
 Mrs. Mary C. Sanford  
 Dr. Anne Marie Santos  
 Mr. & Mrs. Allan Schildknecht  
 Scott & Marianne Schultz  
 Mr. & Mrs. Walter Scott, Jr.  
 Dr. & Mrs. Niall M. Scully  
 Col. & Mrs. Dale S. Seeds  
 Lt. Gen. & Mrs. G. P. Seneff  
 Dr. & Mrs. Harold M. Sexton  
 Mr. & Mrs. Lloyd Sexton  
 R. Sheeley & J. Pinkerton  
 Mr. Clayton Shimaura  
 Mr. & Mrs. Al Sieverts  
 Lt. Cdr. & Mrs. R. H. Smith  
 Mr. & Mrs. Russell L. Smith, Jr.  
 Dr. Jeanne Soderman  
 Mr. & Mrs. Carl Sorem  
 S.M. Soucie & A.J. Garza  
 Mr. & Mrs. Walter Southward  
 Mr. & Mrs. William C. Speer  
 Mr. & Mrs. Cornelius F. Spillane  
 Mr. & Mrs. Allan T. Spitzer  
 Mr. & Mrs. Alexander Spoehr  
 Mr. & Mrs. Bob Stalker  
 Dr. & Mrs. George W. Starbuck  
 Mrs. Raymond Starbuck  
 Capt. & Mrs. Samuel M. Steele  
 Mrs. Herta M. Stevens  
 Mrs. Jane Stevenson  
 Mr. & Mrs. Thomas Stormont III  
 Mr. & Mrs. Kenneth A. Stotler  
 Mr. & Mrs. Stanley A. Styan  
 Mr. & Mrs. Eddie Suzui  
 Mr. & Mrs. Ted Takai, Jr.  
 Ms. A. Kahala Takenouchi  
 Dr. & Mrs. Paul Y. Tamura  
 Mr. & Mrs. Dennis Teranishi  
 Mr. & Mrs. Carl L. Thoenes, Jr.  
 Mr. Arthur Kimbal Thompson  
 Mr. & Mrs. Allen Y. Ting III  
 Mr. & Mrs. R. M. Torkildson  
 Col. & Mrs. Robert H. Towell  
 Mr. & Mrs. Gordon B. Tribble  
 Mr. & Mrs. Jon Trois  
 Dr. & Mrs. Jerome L. Tucker  
 Mr. & Mrs. Wayne Turl  
 Mr. & Mrs. Albert F. Turner  
 Mr. & Mrs. James Turner  
 Mr. & Mrs. Richard L. Ulsh  
 Mr. & Mrs. Jack L. Vaughan  
 Dr. & Mrs. Raymond Vaught  
 Mrs. J. Alexander Veech  
 Capt. & Mrs. Dimitrij J. Vellis,  
 USN (Ret.)  
 Mr. & Mrs. Carl C. Vetter  
 Mr. & Mrs. Albert J. Vivas, Jr.  
 Dr. & Mrs. Garton E. Wall



Mr. & Mrs. Douglas L. Weers  
Mr. & Mrs. W. Westernman  
Mr. & Mrs. Fred R. White  
Mr. & Mrs. John E. White  
Mr. & Mrs. Stratford L. Whiting  
Capt. & Mrs. D. B. Wikeen  
Mr. & Mrs. Chris Wilburn  
Dr. & Mrs. John E. Wilcox  
Mr. & Mrs. Robert A. Wilcox  
Mr. & Mrs. Clark C. Williams  
Mr. & Mrs. Horace Williston  
Mr. & Mrs. Douglas Wilson  
Mr. & Mrs. Thomas W. Wilson  
Mrs. M. Wilson & Miss E. Di Petrillo  
Mr. & Mrs. Clayton Winger  
Ms. Marion B. Witten  
Mrs. Walter & Dr. Terrence Won  
Mr. & Mrs. Donald Woodrum  
Mr. & Mrs. Norman J. Wright  
Mr. & Mrs. Andrew Yanoviak  
Dr. & Mrs. Martin H. Zais

### INDIVIDUALS

Miss Christie T. Adams  
Ms. Clarend Adams  
Mr. Spencer Adams  
Mrs. Charlotte Ahrens  
Mrs. Sandi Akazawa  
Ms. Gwendolyn K. Akina  
Mrs. Anne M. Akita  
Mr. Robert H. Albert  
Mrs. Jane Christman Albritton  
Ms. Barbara Allen  
Mr. John S. Allin  
Dr. Robert C. Allin  
Mrs. Georgina Allred  
Ms. Barbara A. Altman  
Mr. Michael Amiel  
Ms. Karen M. Anderson  
Mr. Lowell Angell  
Ms. Eileen M. Angliss  
Mr. Donald H. Angus  
Mr. Jeffrey Apaka  
Mrs. June M. Ardolino  
Ms. Janet L. Atkins  
Mrs. Suzanne Au  
Mr. Alden I. Avery  
Ms. Helen L. Bains-Jordan  
Dr. Duke Bainum  
Mr. Kent A. Baker  
Mr. William W. Balthis  
Mrs. SuAnn Bamer  
Ms. Ellen F. Banta  
Mr. Robert W. Barber, Sr.  
Mr. William H. Barkhurst  
Mr. Lowell B. Barnhart  
Ms. Judith Barrett  
Mrs. Marjorie M. Barrett  
Mr. John R. Bayliss  
Mr. Donald R. Beaton  
Mr. Douglas Beaton  
Mr. James Beaton  
Ms. Betty Beggs  
Mrs. Elizabeth H. Bell  
Mrs. Gracia Razor Bell  
Miss Dona Bellinger  
Mr. Eric E. Bello  
Ms. Mary Jane Benbrooks  
Mr. Harvey Bennett  
Mrs. Charlotte Berny  
Ms. Bette Berry  
Mrs. Geraldine O. Best  
Miss Beatrice E. Billings  
Mr. Ian Birnie  
Mrs. Thomas B. Birtley  
Ms. L. J. Black  
Mr. Gary L. Blach  
Ms. Sandra E. Blazel  
Ms. Elsie Boardman  
Ms. Sarah L. Botsai  
Mr. Robert Boulette  
Mrs. Charlotte Bosman  
Ms. Patricia Lee Braida  
Mr. David W. Branch  
Mrs. Phyllis E. Brasser  
Mrs. Lydia N. Brickwood  
Miss Maurine D. Brinegar  
Ms. Sally Brockman  
Ms. Balbi Brooks  
Ms. Nancy Brouillett

Mr. David T. Brown  
Mrs. Jessie E. Brown  
Mr. Leroy Brown  
Mrs. Zador W. Brown  
Ms. Helen L. Bugos  
Ms. Christiane K. Bryan  
Mrs. Peg Bryant  
Ms. Peggy Kehoe Buchwach  
Dr. James C. Budde  
Mr. George S. Bukes  
Ms. Antoinette Bullough  
Mr. William J.B. Burger  
Miss Lorrain Burgess  
Mr. Ryk Burgess  
Mr. Larry Burke  
Mr. William M. Bush  
Mrs. Clara K. Bushnell  
Mr. O. A. Bushnell  
Mr. H. A. Butler  
Mr. Emmett Cahill  
Mr. David B. Caldwell  
Mr. Donald C. Camp  
Ms. Martha Campbell  
Mrs. Phoebe P. Campbell  
Mr. R. Alan Campbell  
Mrs. Robert L. Campbell  
Dr. Richard M. Candee  
Ms. Barbara J. Carlos  
Mr. Curtis W. Carlsmith  
Ms. Mitsue Cook Carlson  
Mrs. Lorraine T. Carson  
Mrs. Anna A. Carter  
Ms. Darlene Carver  
Mrs. William B. Case  
Mr. Ed Cassidy  
Ms. Momi Cazimero  
Mrs. June R. Chamber  
Mr. Clark K. Champion  
Mr. James H. Chaney  
Mrs. B. Sue Chang  
Miss Ellen M. Chang  
Ms. Irene Chang  
Mr. Tin-Yuke Char  
Ms. Irene C. Chee  
Mrs. G. R. Cheeley  
Mr. Dennis Y.K. Chen  
Mr. Clinton L. Childs  
Mrs. Cathy Ching  
Ms. Linda Chock  
Mr. Kenneth D. H. Chong  
Mrs. Ivanelle K. Choy  
Mrs. Patricia W. Christian  
Mr. Michael S. Chu  
Dr. Elizabeth W. Clark  
Mrs. Athalie R. Clarke  
Ms. Gwen Clarke  
Mrs. Lori Claussen  
Dr. Paul L. Cleghorn  
Mr. Robert J. Coble  
Mrs. Judith P. Cochran  
Mrs. Sylvia Cochran  
Mr. David A. Cogger  
Dr. Ellen Colburn-Rohn  
Dr. Myron C. Cole  
Mr. Jesse C. Conde'  
Miss Agnes C. Conrad  
Mrs. Harrison R. Cooke  
Mr. Robert Cooke  
Mrs. C. M. Cooke III  
Mrs. Carole Cooley  
Mr. William F. Cooper  
Mrs. Michelle LaRue Corboy  
Ms. Dion-Magrit Coschigano  
Mr. Don R. Cowell  
Mrs. Wendy Crabb  
Mr. Peter J. Crawford  
Mr. Fred L. Creager  
Ms. Mary Creech  
Mr. Robert M. Crone  
Mr. Merle D. Crow  
Mr. Dee M. Crowell  
Ms. Kathy Crumpton  
Mr. Philip H. Cummings  
Mrs. Arlene Curtis  
Charles C. Custer, M.D.  
Mrs. Estelle Cutler  
Mrs. Dominique D'Arceaux  
Mrs. Janet Daniel  
Ms. Retta R. Davidson  
Mr. Mark S. Davis  
Mrs. Barbara Del Piano  
Mr. Jim Delano  
Mr. Harvey M. Demetrakopoulos

Mrs. S. A. Derby  
Mrs. Mildred Derzon  
Mrs. Susan Desjarlais  
Mr. William C. Deutscher  
Mr. Fred A. Devereux  
Mr. Vincent Dias  
Mrs. Helen Duryea Dietz-Moore  
Ms. Linda Diller  
Mrs. Carolyn E. Dixon  
Mrs. Lila Dizon  
Mr. Richard Dole  
Ms. Deborah A. Donovan  
Mr. Gordon Dougherty  
Ms. Dorothy B. Douthit  
Lt. Cdr. Julie Downing  
Mrs. Hazel K. Dukelow  
Mrs. Evelyn Duncan  
Mr. Wayne E. Duncan  
Mrs. C. Harry Dyer  
Ms. Coila I. Eade  
Mr. Bill Edwards  
Ms. Ruby Edwards  
Ms. Sally H. Edwards  
Ms. Patricia G. Engelhard  
Sumner P. Erdman  
Ms. Marsha Erickson  
Miss Dorothy M. Evans  
Ms. Rojean Evans  
Mr. David Eyre, Jr.  
Mr. John Farias, Jr.  
Miss Constance Farina  
Mrs. Dorothy R. Farmer  
Ms. Denby Fawcett  
Mrs. Barbara C. Faye  
Ms. Elizabeth K. Faye  
Mrs. Diane Fell  
Ms. Lynn G. Fannerty  
Mr. Michael Ferguson  
Ms. Mahealani L. Fernandez  
Ms. Stephanie L. Fitzpatrick  
Mr. W. Patrick Flanagan  
Mrs. Petty Floyd  
Ms. Mary Ann Foley  
Ms. Edwyna C. Fong  
Mrs. Virginia Fontaine  
Mrs. G. B. Formans  
Ms. Cindy Foster  
Mr. Robert M. Fox, AIA  
Mr. Randall J. Francisco  
Mrs. Dorothy Frasure  
Mrs. Claudine Fujii  
Mrs. Gail Fujii  
Mr. Randal Fujimoto  
Mrs. Ethel K. Fujioka  
Mr. Reginald P. Gage II  
Ms. Jane Gallagher  
Mrs. Margaret B. Garland  
Ms. Laura L. Gartrell  
Mrs. Violet Gaspar  
Mrs. Monnie Gay  
Mr. Guido Giacometti  
Mrs. Lucille B. Gibson  
Robert M. Gibson, D.D.S.  
Mr. J. Gillmar  
Mrs. Ruth S. Gillmar  
Ms. Paula Giokaris  
Mrs. Elizabeth A. Goddard  
Ms. Cynthia Gomez  
Ms. Lela Goodell  
Mr. Milton Goto  
Mrs. Elizabeth A. Graham  
Ms. Merrie C. Grain  
Mr. Byron R. Graper  
Dr. Michael W. Graves  
Ms. Sally J. Gray  
Ms. Barbara Green  
Mrs. Patricia O. Greenwell  
Dr. J. B. Greenwell, Jr.  
Mrs. Dale P. Greer  
Ms. Delorese Gregoire  
Ms. Palenaka Groce  
Mrs. Werner Gubelin  
Mrs. Alice F. Guild  
Ms. Kathy Gurski  
Mrs. W. Howard Haines  
Mr. Philip D. Haisley, Jr., AIA  
Mr. Greg Hall  
Mrs. Marlene Hall  
Mrs. Pat Hall  
Ms. Pat M. Hammers  
Mr. Craig Hanson  
Mrs. Karol Haraguchi

Mrs. Kitty K. Hardeck  
Mrs. Eva R. Hart  
Mr. John Hashimoto  
Ms. Connie Hastert  
Mrs. Chizu Hatakeyama  
Ms. Persis Hataria  
Mrs. J. C. Hathaway  
Mr. Stephen Haus  
Mr. John M. Hayakawa  
Mr. S. M. Hayamoto  
Ms. Lani N. Hearn  
Dr. Nancy O. Hedemann  
Mrs. Hazel Hee  
Mrs. Leona Hee  
Mr. Richard C. Helfer  
Mr. Wil J. Henderson  
Mr. William T. Hendeson  
Mrs. Robert N. Herkes  
Ms. Judy Higa  
Ms. Carole Higo  
Mr. Calvin S. Higuchi  
Mr. Lawson T. Hill  
Mr. Robert L. Hind, Jr.  
Mrs. Vern Hinkley  
Miss Asa Hinochi  
Mr. Ken Hiraki  
Ms. Betty J. Ho  
Mrs. Jane L. Hobler  
Dr. William J. Hoe  
Mrs. Berenice C. Holmes  
Mrs. Albert C. Holt  
Mr. Alan S. Holzman  
Dr. Ralph C. Hook, Jr.  
Mr. Bernhard L. Hormann  
Mr. George Hotniansky  
Ms. Liz Howard  
Mrs. Marcella S. Howard  
Mrs. Janete L. Howes  
Mrs. Karen Hudlemeyer  
Ms. Vicki S. Hulihee  
Mrs. Harry J. Hutchens  
Mrs. Geraldine Hyde  
Ms. A. Miyo Ichijo  
Ms. Carole M. Ikeda  
Mr. Goro Inaba  
Mr. David F. Ing  
Mr. Richard K. Ingersoll  
Miss Diane M. Irikura  
Ms. Faith T. Irving  
Mr. Joel L. Irwin  
Lt. Col. James K. Iwamura  
Ms. Nancy Lea Jackson  
Mrs. Genevieve H. Jacobs  
Mr. James B. Jacobs  
Mr. Theodore R. James  
Mr. J. Fred Janssen  
Dr. Robert Jay  
Ms. Pamela J. Jayne  
Mrs. Mary Lou Jeffrey  
Mr. Allan Jim  
Mrs. Helga Gerlinda Jockel  
Mr. Reverdy Johnson  
Mr. Ray Jost, ASID  
Ms. Mary S. Judd  
Mr. Yasuto Kaihara  
Mr. Lowell L. Kalapa  
Mr. Robert S. Kalison  
Mrs. Winona B. Kamai  
Mr. Stephen S. Kanda  
Mr. Ronald S. Kats  
Dr. W. Philip Kau  
Dr. Judith A. Kautz  
Miss Diane T. Kawachi  
Mr. Gard Kealoha  
Mrs. John Keat  
Mr. Robert K. Kekuna, Jr.  
Miss Linda Kellam  
Mrs. Liz Keller  
Mrs. Florence M. Kelley  
Mrs. Pat Kelley  
Mr. Joseph Kennedy  
Mr. H. K. Bruss Keppeler  
Mrs. Kenneth R. Kerns  
Mrs. Margie Kiessling  
Mrs. George Killebrew  
Miss Rosemary Kimbrell  
Miss Sandra T. Kimura  
Ms. Melissa King  
Mr. Richard H. King  
Mrs. Lois Kircher  
Miss Audrey E. Kitagawa  
Miss Katherine Knight

Dr. Victor Kobayashi  
Mrs. Virginia D. Koch  
Mr. Robert M. Kohn  
Ms. Valerie Kono  
Ms. Olga S. Korth  
Dr. Thomas Kosasa  
Mrs. Esther Krause  
Ms. Betty Krauss  
Mrs. Shelagh S. Kresser  
Mr. Gaylord Kubota  
Mr. Robert K. Kunishi  
Mrs. Gerry Kurata  
Miss Harriet Y. Kuwamoto  
Mr. Gerald W. G. Kwock  
Miss Dominique La Page  
Mrs. Ardith C. Lam  
Miss Lezlie A. Lapata  
Mr. Edward B.K. Lapsley  
Mr. Dennis L. Lau  
Ms. Janice Lau  
Ms. Licia L. Lau  
Mrs. Mansel E. Law  
Mrs. Grace Mary Lawson  
Ms. June Lawson  
Mr. Bob Lazo, AIA  
Ms. Linda M. Le Geyt  
Mrs. Ranita R. LeGrande  
Mr. David B. Lee  
Ms. Dorothy V. Lee  
Mr. Reginald W.T. Lee  
Mr. Van Lee  
Ms. Louise F. Lembeck  
Mrs. Melville L. Lemon  
Dr. Patricia Leong  
Mrs. Carlyn Levinson  
Mrs. Dudley C. Lewis  
Miss Barbara Lindblom  
Mrs. Gwenola Lindblom  
Ms. Judy Lindeman  
Mr. Thomas M. Linn  
Dr. Jocelyn Linnekin  
Mrs. Jane Lipp  
Rep. Michael Liu  
Mr. Tom Loffman  
Ms. Diane T. Logsdon  
Mr. David Lomas  
Mr. Douglas Long  
Ms. Jun Look  
Mrs. Dorothy L. Loomis  
Mr. John E. Loomis  
Mrs. Rosalie W. Loomis  
Ms. Cathy M. Lowder  
Mr. James C. Luckey  
Mrs. Alison K. Luke  
Dr. Albert W.H. Lum  
Mrs. Charlotte C. Lum  
Mr. Wing Tek Lum  
Mrs. William B. Lupton  
Mrs. D. Belden Lyman, Jr.  
Mr. Samuel A. B. Lyons  
Ms. Lani Maa  
Mr. Michael B. MacBride  
Capt. Colin J. MacKenzie  
Mrs. Stephen H. MacMillan  
Miss Sharon MacQuoid  
Mrs. Sylvia I. Machida  
Mrs. Michelle Maielua  
Mrs. Alvin I. Malstrom  
Mr. David W. Malvin  
Ms. Rene Mansho  
Ms. Ann Mariposa  
Mrs. A. Lester Marks  
Mrs. Dorothy R. Marks  
Mr. Michael J. Marks  
Mrs. Cynthia H. Marnie  
Ms. Marilyn Marsh  
Mrs. Dolores Martin  
Mr. Vance Martin  
Ms. Wanda Martin  
Mr. P. A. Martineau  
Mr. Glenn E. Mason  
Mrs. Barbara Mateo  
Mr. Lorrin T. Matsunaga, AIA  
Ms. Lei S. Matsuo  
Mrs. Amber Matthews  
Mrs. Donald C. Matthews  
Mrs. Clarice Mauricio  
Mr. Stanley K. May  
Mrs. James McCall  
Mr. Charles F. McClure  
Mrs. E. J. McClurkin  
Mrs. Pamela McCoy  
Mrs. Warren C. McDermid  
Mr. Floyd J. McDonald  
Ms. Ruby P. McDonald  
Mr. Bruce McEwan  
Mrs. Anajean McGill  
Mrs. Beverly H. McKeague

Mrs. Cie McMullin  
Mr. George Mead  
Mrs. Kathy Merrill  
Mr. Richard J. Meyer  
Ms. Julie T. Miller  
Mrs. George H. Mills  
Dr. John C. Milnor  
Ms. Muffy Mitchell  
Mr. R. Eugene Mohlie  
Mrs. May A. Moir  
Dr. Michael Molloy  
Ms. Martha Monahan  
Ms. Alexis Montgomery  
Mrs. Francis R. Montgomery  
Mr. Ross W. Moody  
Ms. Carol Moon  
Mr. Paul F. Morgan  
Mrs. Thelma J. Morgan  
Mrs. Elizabeth M. Morris  
Mr. John A. Morris  
Mr. Richard S. Morris  
Mr. Wilmer C. Morris  
Mrs. Jan Morton  
Ms. Susan J. Moss  
Ms. Frances I. Mossman  
Mrs. Sheila Mowbray  
Ms. Nancy A. Mower  
Mrs. Eleanor M. Muehle  
Ms. Claudia G. Mulder  
Miss Ruth L. Munro  
Mrs. Ruth P. Murray  
William J. Murtagh, Ph.D.  
Mrs. Joanna Myers  
Mr. Eddy N. Nagao  
Mr. Ralston Nagata  
Mrs. Stephen V. Nahl  
Ms. Genevieve A. Nahulu  
Bishop Dwight R. Nakamura  
Mr. Larry Nakea  
Mr. Solomon K. Naone  
Ms. Momi Naughton  
Miss Carin Lee Ness  
Miss Dianne Nielsen  
Mr. Jeffrey Nishi  
Ms. Gail T. Nishimura  
Mr. Raymond Edwin Noh  
Mrs. William E. Norcross  
Mrs. Robert A. Nordyke  
Mr. Greg Northrop  
Mrs. Katherine F. Norwood  
Mrs. Diana R. Nui  
Mrs. M. L. O'Brien  
Mr. John B. O'Donnell  
Dr. Dennis M. Ogawa  
Dr. Ray I. Okimoto  
Shungo Okubo  
Mrs. Loraine P. Olingy  
Ms. Ruth M. Ono  
Mr. Susumu Ono  
Ms. Penny Pagliaro  
Ms. Loretta M. Palcic  
Mrs. Momi Palmieri  
Mrs. T. M. Parker  
Mrs. Mabel F. Paxton  
Mrs. Patricia C. Peacock  
Mr. David Penhallow  
Mr. Michael W. Perry  
Mr. Paul C. Peters  
Ms. Dorothy C. Phillips  
Ms. Connie Pickett  
Ms. Judith Pieklo  
Mr. LaRue W. Piercy  
Ms. Jocelyn Pinkerton  
Mr. Phil Poehner  
Mr. Richard Pollock  
Mrs. Beryl M. Pope  
Mr. Horace M. Pope  
Ms. Barbara Porter  
Mrs. Carol Porter  
Mrs. Janet Kay Porter  
Mr. James Hugh Powers  
Miss Joan C. Pratt  
Mr. Glenn Preus  
Mrs. Heidi G. Price  
Ms. Sue A. Prosser  
Mrs. Helen K. Prunyn  
Mrs. Nanette Purnell  
Mrs. Leilani Pyle  
Mr. Joe Pynchon  
Ms. Barbara L. Quinlan  
Mr. U. J. Rainalter, Jr.  
Mrs. Lilly Ramirez  
Mr. Butch Ramos  
Mr. Robert A. Ramsay  
Mrs. M. L. Randolph  
Ms. Barbara Rau  
Mr. Carl L. Reber  
Ms. Donna B. Reber

Mrs. Eunice Reed  
Mr. Tim Reed  
Mr. Richard Reese  
Mr. Robert G. Reid  
Mrs. Loretta Richert  
Mr. Ryon H. Rickard  
Mrs. Pualani Rivero  
Mrs. Barbara K. Robello  
Mrs. Likelike B. Robello  
Ms. Rosemary T. Roberts  
Mrs. Janet Robinson  
Mrs. Julia W. Rodenhurst  
Mr. Robert Rogers  
Ms. Susan Rogers-Aregger  
Mr. Sam Rolph  
Dr. Roger G. Rose  
Mrs. Suzanne E. Roza  
Mr. Steve Rummel  
Mr. Thomas A. Ruppander  
Mr. J. Ward Russell  
Mrs. Nancy Sales  
Mr. Frank Salmoiraghi  
Mrs. Marian A. Sandelin  
Mr. Rodney Peter Santos  
Mr. Alvin Sato  
Mr. David Saurer  
Ms. Jennifer Saville  
Ms. Lyn Scanlon  
Ms. Barbara Schaefer  
Mrs. Kathleen H. Schauer  
Ms. Danya Schiappa  
Mr. Rehman P. Scholz  
Mrs. L. W. Schultz  
Mrs. Marjorie B. Scott  
Mrs. June O. Sebring  
Mrs. Jade I. Sen  
Mrs. Marion S. Senger  
Mrs. Ana Marie Seplak  
Mrs. Barbara M. Seymour  
Dr. Robert S. Shapiro  
Miss Alice Shelly, FCSI  
Ms. Ellen F. Sherman  
Mr. Robert J. Sherwood  
Ms. Jinny Shinsato  
Ms. Doris M. Shiraishi  
Dr. D. C. Shoemaker  
Mrs. Lloyd E. Short  
Mrs. Sidnee Sieber-Remenih  
Mr. Arnold Siegel  
Mrs. Nancy Simmons  
Mr. McKinnon Simpson  
Lt. Col. Margaret E. Sinclair  
Mr. Mike Sitch  
Mr. George C. Slain  
Ms. Anne Slocum-Main  
Ms. Doris J. Smith  
Ms. Esther A. Smith  
Ms. Jenny R. Smith  
Mr. Ken Smith  
Dr. Bart Smith, D.C.  
Mrs. Ruth E. Snook  
Ms. Rebecca Snyder  
Mr. Lloyd J. Soehren  
Ms. Linn M. Sol  
Mrs. Barbara N. Soong  
Mrs. Howard W. Soule  
Mrs. John H. Southworth  
Mrs. Pohai Souza  
Ms. Berenice R. Spalding  
Mrs. Isobel Spangler  
Mrs. Patt R. Spencer  
Mr. Clyde Sproat  
Mr. Bruce Stangl  
Mr. Robert Stanley  
Ms. Jean Stark  
Mrs. Marilyn Stassen-McLaughlin  
Miss Ann Stegmaier  
Mr. Ross W. Stephenson  
Ms. Gigi Stevenson  
Miss Alice A. Stewart  
Mr. Chuck Stewart  
Mr. Tom Stoudt  
Ms. Linda Streitfeld  
Mrs. Ann S. Stubenberg  
Ms. Mary Anne Stubenberg  
Ms. Melinda Stutz  
Mrs. Richard L. Summers  
Ms. Ruth M. Tabrah  
Ms. Chieko Tachihata  
Mr. Gerald Takano  
Mrs. Rufus M. Takitani  
Ms. Shu-Po Tang, ASID  
Mrs. Kinuko Taniguchi  
Mr. Tony Taniguchi  
Mr. Marcos L. Tecson  
Ms. Katherine Tehranian  
Mrs. Philip F. Thayer  
Mr. Willard Thomas

Mrs. Barbara J. Thurston  
Mr. Gregory P. Tierney  
Mr. James Tracz  
Ms. Evelyn Trapido  
Miss Gladys Traut  
Mrs. C. W. Trexler  
Mrs. Genevieve F. Trout  
Ms. Sally A. Tucker  
Mr. Eugene A. Turchi  
Mrs. Farrant L. Turner  
Mr. Edgar B. Twelker  
Mrs. Deborah K. Uchida  
Mr. Steve K. Ulrich  
Mrs. William Upchurch  
Mr. Donald L. Ure  
Mrs. Bette Uyeda  
Miss Charlyce R. Uyehara  
Mrs. Dorothy Valencia  
Mrs. Ruth Valeur  
Ms. Carol A. Van Camp  
Mr. Robert L. Vieira  
Mrs. J. Peter Vilmaire  
Ms. Alice Vinton  
Mrs. Mary Anne Vorfeld  
Mrs. Elizabeth M. Waldron  
Miss Jean M. Wall  
Mr. Howard D. Wallace  
Mrs. Helen R. Ware  
Ms. Pamela H. Warnken  
Mrs. A. D. Waterhouse  
Mrs. Norma L. Watson  
Ms. Laura Watts  
Mrs. R. E. Watts  
Mrs. Indru Watumull  
Ms. Dorothy Davis Webb  
Ms. Gertrude L. Weidig  
Mr. Laurence H. Weisner  
Mr. Jesse C. Wells  
Mr. George M. West, Jr.  
Mrs. Ann W. Wheat  
Mrs. Catherine D. Wheeler  
Ms. Meredith Ann Whipple  
Mr. K. P. White  
Mrs. Thomas K. White  
Mrs. Tina Lyman Whitmarsh  
Mr. Dennis Wiens  
Mr. Howard C. Wigg  
Ms. Linda Wiig  
Mrs. S. W. Wilcox  
Mrs. Rodney F. Williams  
Ms. Cynthia Winegar  
Mrs. George Winters  
Mrs. Betty P. Wistrand  
Mr. Thomas S. Witten  
Ms. Silvia Witzemann  
Dr. John D. Wollstein  
Mrs. Napualani V. Wong  
Mr. Ross M.K. Wong  
Mr. John Y. Woo, Jr.  
Mr. Richard D. Wood  
Ms. Ruth Woodhall  
Mrs. J. F. Wooley, Jr.  
Mr. Heaton L. Wrenn, Jr.  
Ms. Lani Wright  
Miss Midgieanne L. Wright  
Mrs. Nancy Wright  
Mrs. Kathleen Uilani Wyosnick  
Mr. Allen G. Yanos  
Ms. Louise Yardley  
Mrs. Kathy Yeager  
Mr. Linton Yee  
Mr. Mark Yee  
Ms. Mildred Yee  
Ms. Ann K. Yoklavich  
Mrs. John C. York  
Mrs. Mary Richards Yort  
Mr. Chandler Young  
Mrs. Margaret S. Young  
Miss Joann W.L. Yuen  
Mrs. J. Gray Zabriskie  
Miss Emily Zants

## STUDENT/RETIREE

Mr. Ted Adameck  
Mr. Jacob Adler  
Mrs. Thelma Adler  
Ms. Kalena Agena  
Mrs. Maridell B. Alexander  
Mr. Norman Algiers  
Mr. Albert M. Ancheta  
Mrs. Joan Anderson  
Mrs. Eugene F. Anderson, Jr.

# Generation After Generation



MAI KA WĀ MA MUA A KĒIA WĀ AKU

Mrs. Shirley Armstrong  
Mr. William T. Atkins  
Mrs. Dorothy E. Baker  
Ms. Elizabeth Banuilo  
Ms. Jean L. Barker  
Mrs. Nancy G. Barry  
Edyth J. Bassett  
Mrs. Alan P. Beals, Sr.  
Mrs. Carlene Bean  
Mrs. Yvonne C. Beers  
Ms. Elizabeth K. Bell  
Mr. Stennett B. Bell  
Mrs. Helen M. Benedict  
Mrs. Anne J. Benner  
Ms. Shirley D. Bennett  
Mrs. M. Bevacqua  
Mrs. Ruth F. Birnie  
Mr. Leonard Bishop  
Mrs. Mary L. Bishop  
Mrs. Lillian Bloomfield  
Ms. Marian L. Boeke  
Mr. William D. Boland  
Mrs. Hannah E. Bonsey  
Mrs. Debra L. Borchart  
Mrs. J. P. Bowman  
Mrs. Isabel Boyen  
Ms. L. E. Brekelmans  
Mrs. Elly Brodsky  
Mrs. C. A. Brodolf  
Mr. Sidney Brooks  
Mrs. Helen M. Brown  
Mrs. Judith M. Brown  
Mrs. Julia Brown  
Mrs. Ward W. Brown  
Ms. Irva Brubacher  
Mrs. Jean Bruce  
Mr. Kenneth J. Bull  
Mr. Donah Bulosan  
Capt. Louis G. Bushnell, USMC (Ret.)  
Mrs. John W. Bustard  
Mrs. Mathew Cabot  
Mr. Dennis Callan  
Mrs. Helen S. Cameron  
Mrs. Margaret M. Camp  
Mrs. Elizabeth O. Capelle  
Dr. William Carse  
H. Haile Chace  
Mr. Howard Chang  
Ms. Ka'ohu Chang  
Mr. Archie Chatterley  
Mrs. Harriet Chester  
Ms. Leona P. Chu  
Miss Esther Y. Chun  
Mr. Richard J. Connors  
Ms. Carolyn Conrad  
Mrs. Irma M. Conwell  
Mr. Frank E. Cook  
Mrs. Gerald R. Corbett  
Mr. Jack K. Corbett  
Mrs. Deborah Covault  
Mrs. Frederick Crawford  
Mrs. Glenda Craycraft  
LCdr. Wilmer H. Cressman,  
USN (Ret.)  
Mr. Richard Cundy  
Mrs. Ruth D. Cushnie  
Mrs. Lois Dambacher  
Mrs. Margaret K. Daniel  
Mr. John Dapper  
Mrs. Doris Davis  
Dr. A. Grove Day  
Mrs. Walter C. de Renne  
Mrs. Ralph De Mars  
Mrs. Olive Deming  
Mr. Philip J. Deters  
Mrs. Virginia Devine  
Mrs. Peggy Dickie  
Mrs. Kay Dionizio  
Mrs. Deborah Dodd  
Mrs. Orene D. Donovan  
Ms. Auria Doroha  
Ms. Sandy Downs  
Mr. Lincoln C. Drake  
Mrs. R. A. DuBay  
Mr. Dean G. DuPont  
Miss Kristin Dunlap  
Mrs. Elbridge A. Durant  
Mrs. Shirley Eardley  
Mr. Robert B. Ebert  
Miss Bernice Ebinger

Ms. Ruth G. Embree  
Mrs. Mary T. English  
Mrs. Jannease Espinosa  
Mrs. Anne R. Facer  
Miss Yvonne M. Faria  
Ms. Irene Fia  
Miss Susan Fink  
Mr. Victor A. Fink  
Ms. Janene F. Fisher  
Mrs. Ralph Fisher  
Col. S. Fitzgerald, Jr.  
Mrs. Anne L. Flagg  
Ms. Joan M. Flaherty  
Mrs. Elaine Flores  
Ms. Rose Foggia-Clarke  
Dr. Lynn Foley  
Mrs. Catherine Fontes  
Mrs. Everts C. Fox  
Ms. Barbara A. Francis  
Miss Sophie M. Frandsen  
Ms. Janet Wyatt Fullerton  
Ms. Pamela N. Funai  
Dr. James Fung  
Ms. Ivy Gabbard  
Mrs. Lenora M. Gaddis  
Mrs. Frances E. Gammon  
Mrs. D. Garlepp  
Mr. James N. Gennette  
Mrs. Jeanne B. George  
Mrs. Luigi G. Giacometti  
Mr. Frederik C. Gjessing  
Ms. Irene R. Gormley  
Mr. J. Richard Gossett  
Mr. Richard A. Greer  
Ms. Denise E. Griffith  
Mrs. Robert H. Grosjean  
Mrs. E. H. Gunther  
Mrs. Douglas E. Guy, Jr.  
Miss Dorine S. Haglund  
Ms. Shirley L. Hall  
Mr. Dwight L. Hamilton  
Mrs. Charles W. Hancock, Jr.  
Ms. Gail Haraguchi  
Ms. Barbara Harker  
Mrs. Paula E. Harper  
Mr. George P. Harris  
Mrs. Sam Harris  
Mrs. Fritz Hart  
Miss Nellie M. Hartman  
Mrs. Clark J. Hastert  
Mrs. Patti Heil  
Mr. Fred Hemmings, Sr.  
Mr. Robert F. Hemphill  
Mrs. Colin J. Herrick  
Mr. Saichi Higashi  
Miss Kathleen V. Higgins  
Mr. Tatsumi Hiramoto  
Mrs. Burton Hoefler  
Mrs. Lois L. Holcomb  
Ms. Natalie V. Holladay  
Ms. Tiffany Holst  
Miss Irmgard Hormann  
Mr. John W. Hoxie  
Capt. William B. Hunt  
Mrs. Frank W. Hustace, Jr.  
Mrs. Carol Ige  
Mr. Donald C. Ingram, Jr.  
Mrs. Muriel L. Isherwood  
Mrs. Asako Ishimoto  
Mr. T. Ishizaki  
Mrs. Eleanor W. Jacobsen  
Mrs. Lilli L. Jacobson  
Mrs. Sally Janich  
Ms. Ruth M. Jasper  
Mrs. Betty L. Johnson  
Miss Evlyne I. Johnson  
Ms. Patsy K. Kai  
Ms. Karen Kane  
Miss Lani Kea Kanehe  
Mrs. Ruth T. Katsunuma  
Mrs. H. J. Keeley  
Mrs. Dorothy N. Keliioi  
Mrs. Marian W. Kelly  
Mrs. Karen Kenneally  
Miss Alice Kiewit  
Mr. Walt Kik  
Mrs. Cecily H. Kikukawa  
Mrs. Maurice King  
Mrs. Mary Joe Kinnison  
Dr. Guy R. Kirkendall

Mrs. Barbara Kneisley  
Mrs. Steven J. Kolar  
Mrs. Kini O'Keahi Kua'ana  
Mrs. Karl Kuppe  
Miss Alison Kwok  
Mrs. Marguerite G. Laidlaw  
Mrs. Gloria Landon  
Mrs. Rosann Lassman  
Mrs. Constance B. Lawyer  
Mrs. Jean Le Geyt  
Mr. Aaron Levine  
Mrs. Viola G. Lewis  
Mrs. Virginia May Lewis  
Mrs. Alice Von Linden  
Mrs. Jane Locke  
Mr. Malcolm H. Love  
Mr. Charles W. Lucas  
Mrs. Charles H. Ludden  
Mrs. Maxine Lum  
Mr. Harold P. Luscomb  
Mrs. Kim Luyckx  
Mr. Albert L. Lynch  
Major Lawrence Lyon USAF (Ret.)  
Miss Alison MacBride  
Miss Monica-Rae I. Machado  
Mrs. Lillie E. Mackenzie  
Ms. Constance R. Major  
Mrs. Thelma G. Makinney  
Miss Dorothea L. Maley  
Mr. Henry Mandac  
Mrs. Carol Manley  
Mrs. Jeanne D. Mann  
Mrs. Jessie C. Matthias  
Mrs. Milly Mattson  
Mrs. Gwendolyn R. May  
Dr. H. Roy McArdle  
Miss Eunice McCain  
Miss Anna McCall  
Ms. M.E. Keala Naipo McCallum  
Miss Lee McCaslin  
Mrs. Albert E. McGillivray  
Mrs. Elizabeth May McHaney  
Miss Ellen McKinney  
Ms. Cheryl E. Merritt  
Mrs. Berenice M. Meyer  
Mrs. William C. Meyer  
Mrs. Fay Wren Midkiff  
Mrs. Patricia Miller  
Mr. W. Robert Miller  
Mrs. Mildred Minvielle  
Dr. Donald D. Mitchell  
Mrs. Glenn G. Mitchell  
Mr. John Mizusawa  
Mr. R. Burke Morden  
Mr. Lawrence G. Mugg  
Mrs. Margaret E. Mullahey  
Mr. Harry H. Naeole  
Mrs. Juliette Nakashima  
Mrs. Victoria Nasser  
Mrs. Robert J. Natter  
Mrs. Anita C. Nelson  
Mr. Lyle E. Nelson  
Mrs. Mary Nelson  
Mr. Richard E. Nieman  
Ms. Norma Nishikawa  
Mr. J. Grant O'Donnell  
Ms. Vivian A. O'Rourke  
Miss Margaret T. Ohta  
Mrs. Jennifer Onley  
Mrs. Valdimir Ossipoff  
Ms. Janelle Panoke  
Mrs. Faye Parrish  
Mrs. Winona Paschoal  
Mrs. Margaret E. Patterson  
Mr. James A. Paulauskas  
Rev. Kenneth D. Perkins  
Ms. Kanani Perriera  
Mrs. Louis Pope  
Mrs. E. M. Porter  
Mrs. Jeanne W. Price  
Mrs. Rosalie Prussing  
Mrs. Robert A. Purdue  
Miss Julia M. Putnam  
Ms. Lorelei K. Quenzer  
Miss Mildred L. Read  
Mrs. Alta M. Reay  
Ms. Freda Reeser  
J. I. Frederick Reppun, M.D.  
Mrs. Mary Deas Reynolds  
Mrs. Jessie S. Ricketts

Mrs. Jacquie Riley  
Miss Michelle Rivera  
Mr. J. Albert Roesch  
Mr. Charles O. Rogers  
Mrs. Miriam Rogers  
Mr. Jack M. Rolls, Sr.  
Mr. Louis E. Roth  
Mrs. Janet A. Sanborn  
Miss Eileen F. Sander  
Miss Joan C. Saplan  
Mrs. Beatrice N. Savage  
Ms. Rachel Schmidtke  
Mrs. Valera Schmiedl  
Mr. Robert C. Schmitt  
Mrs. Sylvia Schneider  
Mrs. Dorothy Scott  
Mrs. Marc Seastrom  
Mr. DeLos A. Seeley  
Mrs. Steffanie J. Seifert  
Mrs. Keni Shigeoka  
Mrs. Edna Shoup  
Mrs. Frederick Simpich, Jr.  
Ms. Clara Simpson  
Ms. Laura F. Sloatman  
Mr. Richard Sloggett, Sr.  
Mrs. Anna B. Smith  
Mrs. Margaret Smith  
Mrs. William O. Smith  
Mrs. H. Clifford Smith III  
Mrs. Alfred P. Souza  
Mr. C. H. Spiegelberg  
Mr. Robert St. John  
Mrs. Edith G. Stanley  
Mrs. Herbert Stecker  
Corey A. Stone  
Mr. Lynn Strahl  
Mrs. Virginia H. Struve  
Mrs. Ilene Stubbs  
Ms. Lillian Sullivan  
Mrs. Frances L. Sutherland  
Mrs. Sarah L. Sweeney  
Ms. Barbara Sweetman  
Ms. Lisa Takaba  
Mrs. Anne B. Teel  
Ms. Barbara Thompson  
Ms. Lois Lee Thompson  
Ms. Antoinette Thomson  
Mrs. Douglas B. Thomson  
Mr. James P. D. Thropp, Jr.  
Mrs. Fred Thurmond  
Mr. Edward "Ned" Tilton, Sr.  
Miss Ann C. Todoki  
Mrs. T. J. Toloczko  
Mr. P. Quentin Tomich  
Mrs. Robert Toney  
Miss Maydean K.L.H. Torres  
Mrs. Peggy Torres  
Mr. Robert Townsend  
Mrs. Ruby Troy  
Miss Eva Tsoi  
Mrs. Kathleen Turley  
Mrs. Breck Tyson  
Mr. Roy A. Vitousek, Jr.  
Mrs. Hilda H. Voss  
Mrs. Barbara Wadsworth  
Miss Eileen Wagoner  
Mr. Lewis E. Walters  
Mrs. Louise Warinner  
Dr. John N. Warner  
Mr. Willis L. Warner  
Mrs. Dorothy Weight  
Mrs. Donald F. Weiss  
Mrs. Katherine H. Wery  
Mrs. L. Harold Whitaker  
Ms. Mari T. White  
Mrs. Baldwin Whittier  
Mrs. Barbara Wilburn  
Ms. Lois B. Wilder  
Mrs. Louise Wildman  
Mrs. Margaret Willoughby  
Mr. Bertram D. Winston  
Mr. Sau Hoy Wong  
Ms. Alice G. Woolaway  
Ms. Haruko Yabusaki  
Mr. Paul T. Yardley  
Mr. Wesley Yonamine  
Miss Patricia Zane



## CORPORATE HERITAGE ASSOCIATES

Alexander & Baldwin, Inc.  
Aloha Airlines  
American Express Travel  
Amfac/MB Hawaii, Inc.  
APCOA, Inc.  
Associates Four  
Aston Hotels & Resorts  
Bank of Hawaii  
Budget Rent-A-Car Systems, Inc.  
C. Brewer & Co., Ltd.  
C. S. Wo Foundation  
Chinese Chamber of Commerce  
Crazy Shirts Hawaii  
Deloitte & Touche  
Duty Free Shoppers, Ltd.  
Ernst & Young  
1st Nationwide Savings  
Finance Factors, Ltd.  
First Federal Savings & Loan  
First Hawaiian Bank  
First Interstate Bank of Hawaii  
GTE Hawaiian Telephone  
Gerrell Management, Inc.  
Goodfellow Brothers, Inc.  
GracePacific Corporation  
Hawaii National Bank  
Hawaiian Electric Company, Inc.  
Hawaiian Host Chocolates  
Hawaiian Trust Company, Ltd.  
Hemmeter Corporation  
Jack In The Box Restaurants  
KJL Associates  
Kong Lung Co.  
Lum Yip Kee, Ltd.  
OKOA, Inc.  
Oceanic Cablevision  
Oceanic Properties, Inc.  
Okahara & Associates  
PBR Hawaii  
Pacific Resources, Inc.  
Promana, Inc. (Gas Express)  
R. M. Towill Corporation  
Robert's Hawaii  
Sea Life Park  
Shanghai Investment/Commercial Realty  
The Palm Grill  
Treasure Island Publishing Inc.  
Victoria Ward, Limited  
Waiki'i Ranch  
Waimea Falls Park

## CORPORATE SPONSOR

E. E. Black  
Estate of James Campbell  
Foodland Super Markets, Ltd.  
Group 70 Limited  
HPM Building Supply  
Hawaiian Cement  
Honolulu Advertiser, Inc.  
Hyatt Regency  
Island Insurance Co., Ltd.  
Kaiser Foundation Hospitals  
Kyo-ya Co., Ltd.  
Magoon Estate/Magoon  
Brothers, Ltd.  
Mauna Lani Resort, Inc.  
Media Five, Ltd.  
Min Plastics & Supply, Inc.  
Mouse Builders, Inc.  
Pleasant Hawaiian Holidays  
Pomare, Ltd.  
The Queen Emma Foundation  
Theo H. Davies & Company, Ltd.  
Universal Consumer Products, Inc.  
Worrall-McCarter, Inc.

## CORPORATE PARTICIPATING

Aloha Unlimited, Inc.  
American Savings Bank  
Arthur Andersen & Co.  
Aurora Lighting  
Bank of Honolulu  
Banner Construction, Inc.  
Bosh, Ltd.  
Classic Cars, Ltd.  
Consolidated Amusement Co., Ltd.  
Coopers & Lybrand  
DMAC, Inc.  
Del Monte Corporation  
E. K. Fernandez Shows  
Eagle Distributors, Inc.  
Fernandez Fun Factory  
Fujieki, Fukuhara & Co., CPA Inc.  
GECC Financial Corporation  
Gentry Homes, Ltd.  
Gloria Damron Associates, Inc.  
Grosvenor Int'l. (Hawaii), Ltd.  
Hawaiian Crane & Rigging, Ltd.  
Hilton Hawaiian Village  
Honolulu Mortgage Co., Inc.  
Honolulu Roofing Company  
Images International of Hawaii Inc.  
J. C. Penney Company, Inc.  
John Russell Neon  
King & Neel, Inc.  
Kitchen Concepts Plus, Inc.  
Longs Drugs Stores, Inc.  
National Securities & Investment  
Oahu Market Associates, Inc.  
Pacific Construction Co., Ltd.  
Riecke Sunnland Kono Architects  
Robert M. Kaya Builders, Inc.  
Royal Contracting Co., Ltd.  
Sears, Roebuck & Company  
Tori Richard, Ltd.  
UNOCAL  
Waikiki Shopping Plaza

## CORPORATE CONTRIBUTING

Adams Design, Inc.  
Aikahi World Travel  
American Land Company  
Armstrong Builders, Ltd.  
B. F. Dillingham Company, Ltd.  
Better Brands, Ltd.  
Bishop Trust Co., Ltd.  
Blackfield Hawaii Corporation  
Capt. Cook Investment Corporation  
Cardinal Mailing Services, Ltd.  
Central Pacific Bank  
Chaney Brooks & Company  
Chevron U.S.A., Inc.  
Chinatown Merchants Association  
Commercial Shelving, Inc.  
Crossroads Press, Inc.  
Darby & Associates  
Design II Interiors  
Edward Enterprises, Inc.  
Fine Wine Imports  
First American Title Co. of Hawaii  
First Insurance Co. of Hawaii, Ltd.  
Franklin Gray & Assoc., Architects  
Fred N. Sutter & Associates, Inc.  
Graham Murata Russell  
Grubb & Ellis Co.  
Halekulani Hotel  
Hawaii Modular Space Co.  
Hawaiian Life Insurance Co., Ltd.  
Helber, Hastert & Kimura Planners  
Honolulu Publishing Company, Ltd.  
Honolulu Tops  
Honsador, Inc.  
Hopaco  
Hotel Hana-Maui  
Island Title Corporation  
Jardine Emmett & Chandler Hawaii  
Kaiser Development Company  
Kajioka, Okada & Partners, Inc.  
Killingsworth, Stricker, et al.  
Lanai Things  
Law Offices of Wm. Patrick O'Connor  
Leo A. Daly Company  
Liberty Bank  
Lions Club of Honolulu  
Madden Corporation

Maggie Parkes & Associates, Inc.  
Manoa Gallery  
Midpac Lumber Company, Ltd.  
Okumura Takushi Funaki & Wee  
Pacific Insurance Co., Ltd.  
Past Era Fine Antique & Jewelry  
Professional Image, Inc.  
Ross Sutherland, Ltd.  
Servco Pacific, Inc.  
Someplace Else in Kailua  
Stalene Cabinets, Inc.  
TRB/HAWAII, Ltd.  
Taiyo Hawaii Company, Ltd.  
The Food Group  
Tommy S. Toma Contractor, Inc.  
Wade Ltd., Realtors  
Wailea Steak House  
Watumull Foundation  
Wimberly, Allison, Tong & Goo  
Wo Fat Restaurant  
Young Laundry & Dry Cleaning  
Young's Meat & Provisional Co., Inc.

## CORPORATE SUPPORTING

Ameron H C & D  
Brass Light Gallery  
Interior Design Service, Inc.  
Leilehua Realty  
Lynn Tilton, Ltd.  
Source One/Fine Business Furniture  
Terry T. Tamura  
The Gallery, Ltd.

## SUSTAINING

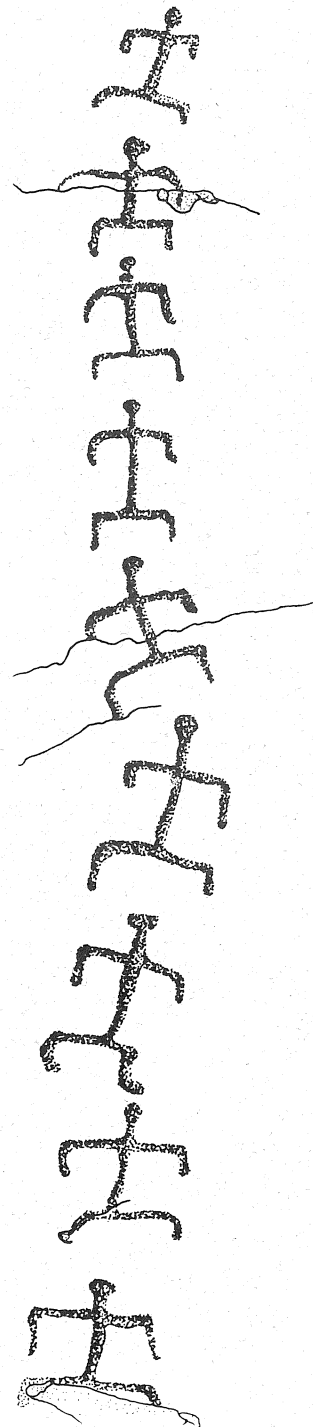
Archaeological Consultants of Hawaii  
Grand Pacific Life Insurance Co.  
Honomu Plantation  
Jiffy Set, Inc.  
Laie Resorts Inc.  
Market Your Art  
Metallic Arts  
Nansay Hawaii, Inc.  
Wing Coffee Co., Ltd.

## TRUSTS, FOUNDATIONS, ORGANIZATIONS, ASSOCIATIONS

Arizona Memorial Museum  
Brigham Young University - Hawaii  
Chaminade University of Hawaii  
County of Maui  
Downtown Business Council  
East Oahu Library District  
Hana Cultural Center  
Hawaii Army Museum  
Hawaii Hotel Industry Foundation  
Hawaii Historic Arms  
Hawaii Redevelopment Agency  
Historic Sites Section, DLNR  
Kamehameha Schools  
Kona Historical Society  
Leilehua High School  
Maui Historical Society  
Maui Public Library  
Oahu Development Conference Fund  
Pacific Tropical Botanical Garden  
State of Hawaii - DBED  
Waianae Coast Culture & Arts Society  
Waimanalo Library

## IN-KIND CONTRIBUTORS

Francis Carter, "Exploring Honolulu's China-town"  
Hawaii Modular Space Co.  
Hawaii Railway Museum  
James Hoyle Gallery  
Larry Ing  
Lion Coffee  
Marion Globber, Past Era Fine Antique & Jewelry  
Max H. Davis Associates  
Ryk Burgess, Gallery B  
Shirley REO Beene, Gateway Gallery  
Sunset Party Services  
Young's Noodle Factory, Inc.



## HISTORIC HAWAII FOUNDATION

Ward Warehouse  
Building D, Bays 27 & 28, Second Floor  
1050 Ala Moana Blvd.  
Honolulu, Hawaii 96814  
P.O. Box 1658  
Honolulu, HI 96806

### EXECUTIVE COMMITTEE

Phyllis G. Fox  
President

C. Dudley Pratt, Jr.  
Chairman of the Board

Charles Pietsch III  
First Vice-Chair

A. Maurice Myers  
Second Vice-Chair

Jane B. Tatibouet  
Secretary

Arthur C. Tokin  
Treasurer

Charles Dunlap  
Francis S. Haines  
Members-At-Large

### BOARD OF TRUSTEES

John C. Ball	Thalia Lani Ma'a
Jackie Blackshear	Bill Mills
Gladys A. Brandt	Douglas Philpotts
Wm. Frank Brandt	Herbert M. Richards, Jr.
Kenneth F. Brown, FAIA	William Richardson
Keola Childs	Oswald K. Stender
Linda Fulgenzi	William Stricklin
Stanley Hong	Laurence Vogel
Tamara Horcajo	Lynne Waihe'e
Judith Hughes	Joyce C. Wilson
Phyllis Kunimura	Edwin S. Wong
Warren Luke	K. Tim Yee

### PAST CHAIRMAN OF THE BOARD

Robert H. Gerell

### TRUSTEE EMERITUS

Mrs. Allyn Cole, Jr.

## HISTORIC HAWAII ANNUAL MEETING

5 - 7 p.m.

Wednesday, April 18

Washington Place

Honolulu, Hawaii

5 p.m.

Report to the Membership

Election of President

and New Trustees

6 p.m.

Cocktails, Pūpū, & Hawaiian Entertainment

Aloha Attire

RSVP by April 12, 1990

## HISTORIC HAWAII STAFF

Executive  
Vice-President  
Kirk Smith

Vice-President  
Education/Communication  
Dion-Magrit Coschigano

Development Director  
Marge S. Kam

Coordinator, Main Street Hawaii  
Anne C. Church

Assistant Editor  
Jeff Clark

Special Events Coordinator  
Carmella Hernandez

Office Manager  
Raynette Nakamura

Front Office Clerk  
Keri Krause

### About the cover:

The ink drawings used to decorate this Annual Report are scaled renderings of petroglyphs located at Puakō on the Island of Hawaii.

The succession of figures represents the genealogical succession of an 'ohana, and suggests to us continuity and the maintaining of a connection to generations both prior and subsequent. Occupying our own place in the line, we learn what we can from what has come before us, and we teach what we can to those who follow us.

The closest 'ōlelo Hawaii translation of the theme "generation after generation" is "mai ka wā ma mua a kē ia wā aku". Its literal meaning is "from before until now, and ahead in the years to come".

So here we are breathing down the back of the year 2000 and learning from an example of Hawaiian rock art several centuries old. Now it's our turn to "pass it on."

Mahalo nui loa to Mikilani Ho for providing us with the art and enlightening us to its meaning. Ho recorded and researched the petroglyphs at the Puakō site as part of her graduate studies in the Anthropology Department at the University of Auckland.

Historic Hawaii Foundation  
Post Office Box 1658  
Honolulu, Hawaii 96806

Nonprofit  
Organization  
U.S. Postage  
**PAID**  
Honolulu, HI  
Permit No. 1301