



# HISTORIC HAWAII

1987  
ANNUAL REPORT

### **PRESIDENT'S REPORT**

We have reached another stage in the ongoing development of *E ho'opa'a i ka kakou ho'oi lina* (holding fast to our heritage) in Hawai'i. When we organized in 1974, we encouraged the preservation of every older building and site by fighting hard to put in place legislation and government controls to achieve our goals. This was followed by work to set up economic benefits and tax incentives to encourage owners, and developers to save and protect historic structures.

■ Today, we can look with great pride at the accomplishments we have achieved: State and County legislation has built-in controls and guidelines for preservation; Historic Commissions and Review Boards have been established; Rehabilitation Tax Credits and a Real Property Tax Exemption are in place and being used. People have truly become more aware of the importance of preserving historic buildings and sites from the point of view of government controls and economics. ■ We now need to set another priority - a focus on education to explain why preservation of historic buildings and sites is so very important to our generation and generations to come. We need to reinforce the value of our varied cultural roots; to encourage residents of small towns to keep alive cultural traditions, ceremonies and family celebrations; to honor individuals and organizations which are responsible for restoring, preserving and maintaining the

buildings and sites which were the stages upon which our early history took place. ■ We also need to reaffirm our dedication to quality in all that we do through educational programs which will reach out to everyone. We need to assure that the standards of government work and private efforts are carried out in line with the *finest* standards, using the best tools and techniques known today. ■ Education must be our priority in the development of our preservation program. We need to share information which will lead to the establishment of standards for quality workmanship, interpretation and planning. Hawai'i is too precious, our heritage too valuable, to aim for anything less. ■



*Phyllis G. Fox, President*

## **CHAIRMAN'S REPORT**

As we look back over this past year there have been many remarkable achievements, but one stands out above the rest. We should indeed take great pride in the establishment of the Historic Preservation Program at the University of Hawai'i, Manoa, which now has 18 candidates for Graduate Certificate Degrees and 7 auditors. ■ We were more than fortunate to have Robert Giebner teach classes last fall and William Murtagh, Ph.D., introduce the course in January 1987 and return to teach again this spring semester. Both scholars are recognized leaders in American and International Preservation. ■ This course has contributed to the community as well as to the University. Students worked on reports which researched and recorded plantation history, created a children's education program, did survey and inventory of historic buildings, recorded Chinatown on video tape and researched familiar scenes from the past and photographed them as they look today. ■ The University program also served as the forum for mainland experts to gather and share their expertise in the classroom and with the general public in the "Experts at the Palace" noontime conference series. ■ Certificate Candidates were also responsible for initiating the Historic American Building Survey of 14 buildings on Nu'uuanu and Merchant Streets by encouraging First American Title to fund the project. ■ Five architectural students and a historian took 12 weeks to complete the research and drawings. The originals of their work will be kept in the Library of Congress, Washington, D. C. ■ Candidates also became involved with Historic Hawai'i programs, contributed articles and photographs to our magazine and attended special events. ■ Dr. Murtaugh has been an invaluable resource to preservation projects including the Bond Complex on the Big Island, Wananalua Church on Maui and the Kaimuki Fire Station. ■ We look at the accomplishment of this program as the start of a major educational program for knowledge and a resource which will benefit Hawai'i as well as our neighbors in the Pacific. ■



*Robert H. Gerell, Chairman of the Board*

## ACHIEVEMENTS

---

### SHOWHOUSE

An elegant kama'aina estate on Kahala Avenue was the scene October 2-23 of Showhouse '87 - an exciting joint program of Historic Hawai'i and the American Society of Interior Designers, Hawai'i Chapter. The interior of this historic beachfront home, owned by Arthur C. Hyde, was entirely redesigned by 12 talented designers who managed to accomplish their makeover in two short weeks which included painting, papering and furnishing. ■ Over 900 time slots were filled by volunteers who enjoyed the home as well as shared information about the history and interiors with the four thousand people who attended the three week showcase. ■ The home gleamed inside and shimmered outside as thousands of dollars of lighting illuminated the water, trees and pathways. ■ Parties highlighted days and nights. Members were able to see the empty house, before design work began, at the Barebones Party. Special contributors were treated to an evening of Hawaiian food and entertainment. Guests listened and danced to Hawai'i's finest music at the grand opening gala "An Odyssey of Jazz". ■ Fashion shows, displays of antique and precious jewelry and musical serenades added to the enjoyment of weekday luncheons and Sunday brunches served on the shaded Hau Terrace. Visitors were able to browse and shop at the unusual Gift & Art and Plant Boutiques. Special seminars were offered to help people plan interior designs for their own homes. ■ Showhouse '87 - a great kama'aina home which reflects gracious living of a past era. Showhouse '87 - a great success! ■

Frances Y. Gassner, ASID, Chairman

Phyllis G. Fox, Co-chairman



*Joanne Clark, ASID*

## **PRESERVATION PARADE**

The 1987 Preservation Parade was held in the Lanikai and Kalaheo areas. The tour base was at the Boettcher Estate on Kalaheo. ■ The tour included a renovated schoolhouse which was originally situated in Waimanalo and moved to Kalaheo several years ago. It was completed in time for the Parade and retained the old schoolhouse charm. ■ The Higgins' home on the ocean was completely remodeled by the architect-owner and is a modern-day residence with guest apartment attached. ■ A doctor resided in the old Bank of Hawai'i Branch office at the former entry to Kaneohe Marine Corps Air Station. It is a very cozy home now but still retains the old vault and other fascinating features of the former bank. ■ Pony Watson's home overlooking all of Lanikai was remodeled to take advantage of the 130 degree view with

a "round" living room and a domed ceiling. ■ The last house on the tour was originally the playhouse of the Cooke Estate. With a history of having been used as a recreation "home" during WWII and surviving a tidal wave, it is very well preserved and is the current home of Mr. and Mrs. William Morris. ■ At the Boettcher Estate, two seminars were held simultaneously. ■ More memberships were recruited at this function than at any other single event. ■

**Jean M. Wall, Chairman**



*Frank and Rusty Kunz*



*Robert Nespor, AIA and Glenn Mason, AIA*

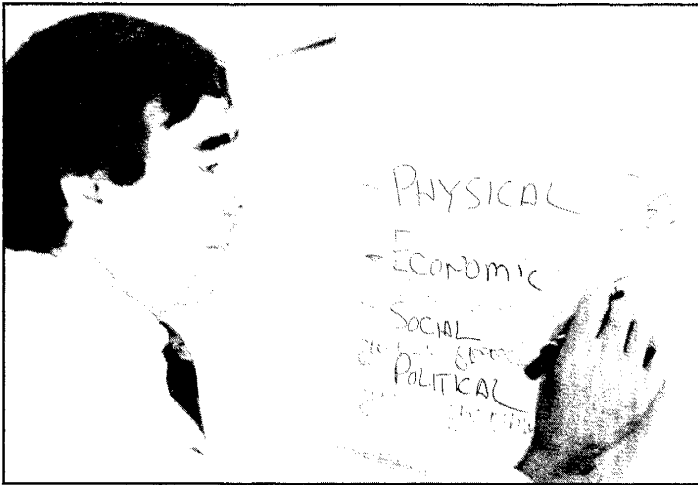
### **VANCE BORLAND MEMORIAL FUND CARRIES ON HIS TRADITION**

It is with sadness that we organize, plan and begin to take up the challenge that Vance Borland left to us. ■ In February 1987, Vance reported to the Trustees his plan to "provide rehabilitation and maintenance plans for church buildings." He outlined preliminary goals: 1) restoration and preservation of older churches, temples and shrines; 2) formation of a task force similar to that assembled for the rehabilitation plan for Bishop Hall; 3) verbal agreements for help from BIA, AIA, ASID and ASLA. ■ Through generous contributions from people in Hawai'i and on the mainland, we have established a working fund to accomplish his goals. Experts have already been sent to Kailua-Kona to establish a resource team to assist in the stabilization and preservation of Hale Halawai o Holualoa Church on the ma kai side of Ali'i Drive. Experts have also visited Wananalua Church in Hana and begun guiding members of the congregation in the preparation of forms for nominating the Church to the State and National Registers and started to prepare a preservation plan for the historic structure. ■ We will record these efforts and plan to develop a resource book which can be used by other congregations as they look at their own stewardship for historic churches throughout Hawai'i. ■

**Brian J. Shuckburgh, ASID, Chairman**

### **EXPERTS AT THE PALACE**

Beginning with the new year, the Old Archives building on 'Iolani Palace grounds opened its doors for the first time since its renovation to the "Experts at the Palace" continuing conference. Co-sponsored by Historic Hawai'i, the University of Hawai'i's Historic Preservation Certificate Program and 'Iolani Palace, this series of lunchtime talks brought mainland experts to share



*Donovan Rypkema*

information. ■ Since part of Historic Hawai'i's focus this year is education, this unique learning experience reached hundreds of people in the seven lectures which began January 7. Experts such as Elliott Carroll, Executive Assistant Architect of the U.S. Capitol, Washington, D.C., shared their historic preservation expertise and became a resource to organizations and individuals on specific issues. The conference will continue through May. ■

**William Murtagh, Ph.D.**

### **PRESERVATION WEEK FEATURES "HISTORICITY"**

May 10 to 16 was filled with activities in honor of National Preservation Week. Activities were launched by a press interview held in the former Tropical Trolley car now parked in Chinatown. Mainland experts Mary Means, David Hyun, Bruce Judd and Ron Thomas discussed national preservation concerns and trends. ■ A day-long "Making Downtowns Work" conference, co-sponsored with the Estate of James Campbell, brought representatives of the community together in the Hawai'i Theater to address downtown today and options for the future. ■ The Hawai'i Chapter, American Institute of Architects presented a week-long exhibit of their projects in the Pauahi Tower lobby. ■ The story of the restoration of 'Iolani Palace was presented in film and slides. ■ Over 100 people took off through downtown on Saturday participating in a Scavenger Hunt contest to identify significant architectural details of historic buildings to qualify for prizes. ■ Liberty House Downtown joined in by featuring an exhibit of historic photographs, classic cars and costumes. ■ This refocusing on downtown offered an opportunity to share concerns and options for the future. ■

**Oswald Stender, Chairman**

## ACHIEVEMENTS

---

### ANTIQUE DEALERS SHOW

Again this year, volunteers organized and manned a booth September 24-26 to sell donated antique items as a fundraiser for the Foundation. Again it was a great success in donations, dollars and new memberships as customers browsed, shared memories, bought and signed up. ■



*Rick Ralston*

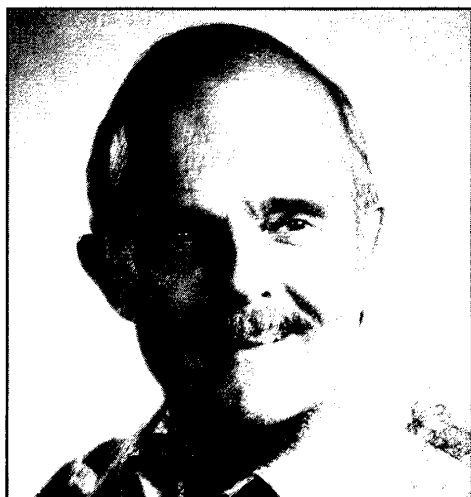
Over 100 items were collected throughout the year, priced and then put on display - some with stories of their past - in a booth donated by the Hawai'i Antique Dealers Association, sponsors of the Show and Sale. ■

We are very grateful to all who helped, especially Ryk Burgess and Helen Brown. ■

**Kevin Dooley, Chairman**

### ODC LIBRARY

As the O'ahu Development Conference closed its doors, its Board of Directors offered their extensive library of reference and resource materials to Historic Hawai'i Foundation. ■ Their donation was gratefully accepted and we look forward to incorporating it with our growing library of preservation materials and to having the combined collection available for use. ■



*C. Dudley Pratt, Jr.*

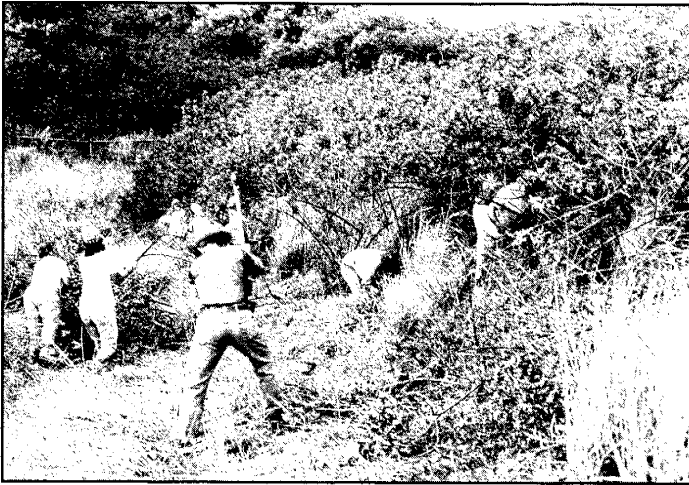
### NOMINATING COMMITTEE

Our task this year was especially rewarding as we worked with C. Dudley Pratt, Jr., who is our nominee for the next Chairman of the Board. We took special note of his concerns for recruiting new Trustees with potential for leadership as well as commitment to Historic Hawai'i's goals and objectives. ■ We trust that the membership will approve of our selections as they vote at the Annual Meeting. ■ Special thanks to Committee Members Charles Pietsch III, James Reynolds, Teney Takahashi, Stanley Hong. ■

**Wm. Frank Brandt, Chairman**

### **PAHUKINI HEIAU RESTORED**

Hundreds of volunteers cleared the site and learned about the importance of the Pahukini Heiau under the leadership of Denby Fawcett and Jocelyn Linnekin, Ph. D. A Conservator Agreement was negotiated between Ameron HC & D/Lani-Kailua Business and Professional Women



*Volunteers restored Pahukini Heiau*

Organization and the County of Honolulu to assure its ongoing maintenance. ■ Re-dedication of this important heiau was celebrated on February 27, 1988, coordinated by Nanette Purnell. Because people cared, this valuable site has been restored and will be preserved! ■

### **HISTORIC HAWAI'I RECEIVES TWO AWARDS**

The National Recognition Program for Community Development Excellence of the U. S. Department of Housing and Urban Development presented Historic Hawai'i with a Certificate of National Recognition as a participant in the rehabilitation of the O'ahu Market for our contribution to fostering public/private partnerships for the greater benefit of our community. The American Society of Interior Designers, Hawai'i Chapter, presented the Foundation with their prestigious Perpetual Award of Recognition for the promotion and advancement of Interior Design in Hawai'i. ■

### **NA LEO I KA MAKANI CONCERT**

Our very special thanks to Palani Vaughan, his family, and the many talented entertainers who took part in the remarkable "Na Leo I Ka Makani - Voices on the Wind" concert which celebrated the Year of the Hawaiian, King David Kalakaua and benefitted Historic Hawai'i. Planned for November 14, the wind and the rain caused a postponement until the following evening when a softer wind and starlight combined with the musical talent of the performers to create a memorable evening of incredible Hawaiian entertainment. ■ Mahalo nui loa. ■

## ACHIEVEMENTS

---

### MAIN STREET

The Main Street Hawai'i Program is a way to effect change, to help the people of a community learn to help themselves. Through this program communities learn how to market their town, how to rehabilitate buildings, and individual businesses learn how to merchandise and promote their stores. ■

Main Street Hawai'i's success in 1987 is reflected by statistics. A total of 53 new businesses have opened their doors in the four towns. At least 151 jobs have been created by new or expanded businesses and more than \$2,300,000 private sector dollars have been invested in



*Canario Building, Hilo gets new paint.*

the combined towns. ■ The Main Street organizers in **WEST KAUA'I**, led by Chairman Owen Moe, have a BIG vision. They see beyond the city limits, encompassing the 200 acres surrounding them as their imaginary boundary. Highlights of the 1987 West Kaua'i program include: 140 commercial buildings surveyed, with photos and recommendations for improvements... More than 8,000 trees distributed to beautify the west side of Kaua'i... Capt. Cook Statue moved to Hofgaard Park as a focal point for the town center... Annual Capt. Cook Celebration attended by thousands... Waimea His-

torical Walking Tour published... Three workshops utilized expert resources for accounting procedures, public relations, advertising and business planning. ■

**WAILUKU** is Main Street Hawai'i's newest town. Led by Ormond Kelley, Chairman, they've had an active first year adding forty new businesses to the area in 1987. Highlights of the 1987 Wailuku program are: Won the "Take Pride in America" national award for downtown cleanup... Sponsored an Admission Day Festival, August 22 with Ho'olako and Maui Historical Association... Published a newsletter to communicate action of retailers, organizations and government... Drafted a traffic and parking proposal for management of the municipal parking lot... Developed co-operative advertising for retailers. ■

In the third year of the program, Tony Taniguchi's **HILO** is beginning to see the results of hard work - \$1,299,750 private sector dollars were invested in downtown. Hilo is a shining example of a town shaping its own destiny using the Main Street philosophy. Highlights of the 1987 Hilo program are: 24 design facade renovations completed... Gateway signs with emblazoned logo installed... 552 entries in Aloha Week architectural contest... Monthly Hilo downtown advertiser tabloids created as a cost effective way for

merchants to reach customers . . . Hosted visits from Governor Waihe'e, NMSC Resource Teams, and Main Street Hawai'i Committee . . . Expanded communications through Block Captain System and a monthly newsletter . . . Demonstration loan program planning started . . . Market analysis is progressing and a marketing package has been produced. ■ **HANAPEPE'S** Chairman, Kikuo Harada, is carefully planning the town's future. Main Street is busy organizing and will soon implement its anticipated "Paint the Town" project. Highlights of the 1987



*Hilo Main Street meeting*

Hanapepe program are: Received a \$35,000 grant for design assistance from the County of Kaua'i's CDBG program . . . Budgeted, calendarized a design program, drafted strategy for a master plan and achieved consensus on design guidelines . . . Sponsored a Bougainvillea Festival attended by hundreds . . . Published newsletters . . . Printed, distributed T-shirts with the Hanapepe logo. ■

## 1988 HISTORIC PRESERVATION AWARDS

---

As time and mankind take their toll on the unique buildings of Hawai'i, efforts to restore and preserve them are taking place and will be recognized by 1988 Preservation Awards. ■ The restoration of the **HONOLULU HALE** ceiling frescoes will be honored. The frescoes, of American Southwest Indian design are among the most intricate and outstanding features of the building which is on the National Register of Historic Places. They were restored by conservation experts to natural rich earthtones. The project was completed in approximately two months. ■

A second Preservation Award for the successful restoration of the **OLD HONOLULU POLICE**

**STATION** will be given. Considered one of Hawai'i's architectural treasures, great care was taken by the City and County of Honolulu to preserve the architectural features of the structure. ■ The

**GEORGE HALL** restoration at the University of Hawai'i at Manoa will receive a Preservation Award. Originally called the Library, the building is listed on the State His-



*Honolulu Hale Fresco*

toric Register. The architect followed strict guidelines in preserving the character of the building.

■ **HANALEI KKW, LTD.**, the recipient of a Preservation Commendation for forming a partnership to save Lihue Hongwanji. The oldest Japanese Buddhist mission building on Kaua'i, the Lihue Hongwanji was moved to Hanalei and reconstructed on a new site. ■ A Commendation



*Lihue Hongwanji*



*Old Police Station*

will be awarded to the **HISTORIC PRESERVATION EDUCATION PROGRAM** at the Center for Continuing Education and Community Service, University of Hawai'i - Hilo. The program was an on-going advocacy and education series ranging from the traditional concepts of neighborhood revitalization to talks on "Keeping Time with Change: Preservation in a High-Tech Age" by William Murtagh, Ph.D. ■

The **COUNTY OF KAUAI** will receive a Commendation for being the first County to establish a Certified Local Government under the National Historic Preservation Program. ■ **NANETTE PURNELL** will receive a Certificate for the Hawaiian Cemetery Site Project. Ms. Purnell photographed thousands of cemetery inscriptions, published a directory with the information she found, and gave numerous lectures.

■ **JERRY TUNE** will also receive a Certificate for his outstanding editorial support of historic preservation news in the Living Section of the *Honolulu Advertiser/Star Bulletin*. He has assisted in letting the community know about the goals, objectives and accomplishments of historic preservation here and throughout the world. ■

## ACHIEVEMENTS

---

### MAUNAKEA MARKETPLACE

Chinatown will have newly constructed buildings sympathetically designed to fill the gaping holes between the buildings on Hotel and Maunakea Street. And Historic Hawai'i Foundation will have a new home thanks to the efforts of Robert H. Gerell. Mr. Gerell was granted a long term lease on the 28,000 square foot site to construct a commercial center, and building plans to reflect existing architecture are being drawn up. Historic Hawai'i will be negotiating a long term rent-free lease with Mr. Gerell for 2,000 square feet in the shopping center. ■

### MEMBERSHIP

The outstanding response to membership recruitment in 1987 indicates a strong, growing interest in the community and among visitors to protect Hawai'i's unique heritage. ■ The **Heritage Associates**, a very special group of major donors who contribute \$1,000 or more each year, increased by 20 new Individual and Corporate members. The Associates' generous membership



*Two treasured members . . . Beatrice Krauss and Inez Ashdown*

contributions continue to be the major source of private funding to strengthen programs and expand services to meet preservation needs. Deep appreciation to C. Dudley Pratt, Jr., who has led the group with much success as Chairman for the past two years, and to his committee. ■

With **General Membership**, 500 new members was the magic number that we were working towards. The actual number reached 515! Our very special

thanks to the sixty volunteers who gave so much of their valuable time and showed such enthusiastic support for Historic Hawai'i at the Preservation Parade of Homes in May, the Antique Dealers Show and Sale in September and Showhouse '87 in October. ■ Chairman Steve Sofos kicked off the 1987 **Corporate Membership Drive** in July with a Historic Hawai'i slide show for the campaign committee members representing 15 companies. The Drive resulted in 40 new business members, helping to boost total corporate general membership to 105. ■

# 1987 Financial Statement

## STATEMENTS OF ASSETS AND LIABILITIES

(arising from cash transactions)  
December 31, 1987

	1987			1986		
	General Operating Funds			General Operating Funds		
ASSETS	Unrestricted	Restricted	Total	Unrestricted	Restricted	Total
Cash						
Savings and checking	\$ 60,546	\$174,549	\$235,095	\$70,979	\$49,711	\$120,690
Certificates of Deposit	30,000	-	30,000	-	-	-
Marketable securities - at cost (which approximates market)						
Corporate securities	-	-	-	1,000	-	1,000
Fixed assets	26,706	-	26,706	20,623	-	20,623
Less accumulated depreciation	14,165	-	14,165	9,497	-	9,497
	<u>12,541</u>	<u>-</u>	<u>12,541</u>	<u>11,126</u>	<u>-</u>	<u>11,126</u>
	<u>\$103,087</u>	<u>\$174,549</u>	<u>\$277,636</u>	<u>\$83,105</u>	<u>\$49,711</u>	<u>\$132,816</u>
LIABILITIES AND FUND BALANCE						
Liabilities						
Due to joint venture partner - Showhouse	\$ 371	\$ -	\$ 371	\$ -	\$ -	\$ -
Fund balance	102,716	174,549	277,265	83,105	49,711	132,816
	<u>\$103,087</u>	<u>\$174,549</u>	<u>\$277,636</u>	<u>\$83,105</u>	<u>\$49,711</u>	<u>\$132,816</u>

## STATEMENTS OF REVENUES AND EXPENDITURES

	1987			1986		
	General Operating Funds			General Operating Funds		
	Unrestricted	Restricted	Total	Unrestricted	Restricted	Total
Revenues						
Fund-raising activities	\$ 28,086	\$ -	\$ 28,086	\$ 32,093	\$ -	\$ 32,093
Membership dues	149,422	-	149,422	160,425	-	160,425
Contributions	12,606	-	12,606	3,185	-	3,185
Magazine advertising	9,563	-	9,563	2,168	-	2,168
Preservation projects	-	314,801	314,801	-	117,261	117,261
Public education	4,265	-	4,265	10,652	-	10,652
Interest	8,872	-	8,872	7,763	-	7,763
	<u>212,814</u>	<u>314,801</u>	<u>527,615</u>	<u>216,286</u>	<u>117,261</u>	<u>333,547</u>
Expenditures						
Salaries and wages	62,866	-	62,866	56,147	-	56,147
Cost of fund-raising activities	11,580	-	11,580	12,510	-	12,510
Depreciation	4,668	-	4,668	3,787	-	3,787
Insurance	8,502	-	8,502	9,865	-	9,865
Membership	4,770	-	4,770	8,142	-	8,142
Office supplies	8,675	-	8,675	7,116	-	7,116
Other services	12,055	-	12,055	-	-	-
Postage	4,901	-	4,901	4,698	-	4,698
Preservation projects	-	188,068	188,068	-	107,086	107,086
Professional	3,644	-	3,644	4,213	-	4,213
Public education	49,006	-	49,006	74,347	-	74,347
Rent	9,681	-	9,681	9,326	-	9,326
Repairs and maintenance	1,909	-	1,909	1,258	-	1,258
Taxes	7,593	-	7,593	6,240	-	6,240
Telephone	5,051	-	5,051	5,316	-	5,316
Travel	197	-	197	93	-	93
	<u>195,098</u>	<u>188,068</u>	<u>383,166</u>	<u>203,058</u>	<u>107,086</u>	<u>310,144</u>
EXCESS OF REVENUES OVER EXPENDITURES	<u>\$ 17,716</u>	<u>\$126,733</u>	<u>\$144,449</u>	<u>\$ 13,228</u>	<u>\$ 10,175</u>	<u>\$ 23,403</u>

## STATEMENTS OF CHANGE IN FUND BALANCE

	1987			1986		
	General Operating Funds			General Operating Funds		
	Unrestricted	Restricted	Total	Unrestricted	Restricted	Total
Fund balance at beginning of year	\$ 83,105	\$ 49,711	\$132,816	\$69,877	\$39,536	\$109,413
Excess of revenues over expenditures	17,716	126,733	144,449	13,228	10,175	23,403
Transfer to (from) funds	1,895	(1,895)	-	-	-	-
Fund balance at end of year	<u>\$102,716</u>	<u>\$174,549</u>	<u>\$277,265</u>	<u>\$83,105</u>	<u>\$49,711</u>	<u>\$132,816</u>

The above figures are preliminary pending the completion of our annual audit by Grant Thornton.

## HERITAGE ASSOCIATES

Mrs. Barbara Cox Anthony  
Mr. and Mrs. Roy S. Blackshear  
Mr. and Mrs. W. M. Borthwick, Jr.

Mrs. Anthony B. Boynton  
Mr. Kenneth F. Brown  
Mrs. Mary Lou J. Carter  
Dr. Ann B. Catts  
John F. Chalmers, M.D.  
Mrs. Dorothea G. Chandler  
Mr. and Mrs. Henry B. Clark, Jr.  
Capt. and Mrs. Allyn Cole, Jr.  
Mr. and Mrs. Bill Cook  
Mr. and Mrs. S. A. Cooke  
Mr. Richard A. Coons  
Mr. and Mrs. H. C. Cornuelle  
Miss Alicia C. Davies  
Mrs. Alan S. Davis  
Mr. and Mrs. H. S. Dimmitt  
Mr. Peter G. Drewliner  
Mr. and Mrs. Dean Eyre Jr.  
Mrs. T. N. Fairbanks, Jr.  
Dr. and Mrs. E. C. Fox, Jr.  
Mr. and Mrs. P. J. Fulgenzi  
Mr. and Mrs. R. H. Gerell  
Dr. and Mrs. N. Goldstein  
Mr. and Mrs. John Goss  
Mrs. Louise Goss  
Mr. David M. Haig  
Mr. and Mrs. Warren Haight  
Mrs. Ruth K. Hanner  
Mr. and Mrs. J. W. Hartley, Jr.  
Mr. and Mrs. Herbert Hong  
Mrs. Susan Hulick  
Mr. Arthur C. Hyde  
Mrs. Cecily F. Johnston  
Miss A. K. Kawanakao  
Mr. E. K. Kawanakao  
Miss Poomai Kawanakao  
James T. Lambeth, M.D.  
Mrs. Spencer Leineweber  
Gerrit R. Ludwig, M.D.  
Mr. and Mrs. W. K. K. Luke  
Mr. Robert J. Marsh  
Dr. and Mrs. T. M. McMillan  
Mrs. Neva S. McMullan  
Mr. and Mrs. E. A. O'Neill  
Mr. and Mrs. N. R. Potter, Jr.  
Mr. C. Dudley Pratt, Jr.  
Mr. Rick Ralston  
Mr. and Mrs. J. B. Ramstead  
Mr. James C. Reynolds  
Mr. and Mrs. Henry Rice  
Mrs. Joan Rohlfing  
Mr. and Mrs. R. L. Salley  
Mr. C. Frederick Schutte  
Mrs. Edward W. Scripps, II  
Mrs. Maryanna G. Shaw  
Mr. and Mrs. M. Sheehan  
Mr. James C. Shingle  
Mr. Brian J. Shuckburgh  
Mr. and Mrs. Allen M. Stack  
Mr. and Mrs. John Stevenson  
Mr. and Mrs. A. Tatibouet  
Mrs. Annalie Tatibouet  
Mr. Edward Tilton, Sr.  
Mr. and Mrs. T. Twigg-Smith

Mr. and Mrs. H. V. von Holt  
Mr. and Mrs. G. H. Walther  
Mr. Jeffrey N. Watanabe  
Drake W. Will, M.D.  
Mr. Kim Wissing  
Mrs. Cenric Wodehouse  
Mr. Donald K. Yamada

## PARTICIPATING

Mr. Carter Black  
Mrs. Gladys A. Brandt  
Mr. and Mrs. B. L. Marx, Jr.  
Mrs. George H. Moody  
Mrs. Patricia Morriss  
Mr. Donald Oresman  
Ms. Mary Philpotts  
Miss Diane J. Plotts  
Mr. William S. Richardson  
Mr. Charles C. Spalding  
Mr. Arthur C. Tokin

## CONTRIBUTING

Mr. and Mrs. A. R. Abramson  
Mr. Michael Lewis Ainslie  
Mr. and Mrs. H. A. Alexander  
Mr. and Mrs. G. R. Ariyoshi  
Mr. and Mrs. A. S. Atherton  
Mr. Gene Axelrod  
Mrs. Donald E. Bahrenburg  
Kenneth P. Barrow, Esq.  
Mr. and Mrs. D. S. Beatty  
Mr. and Mrs. J. D. Bellinger  
Mr. and Mrs. James A. Bier  
Mrs. Charles Boettcher II  
Mr. Bob Bosley  
Mr. and Mrs. R. J. Bradley  
Mrs. W. Herbert Bretzlaff  
Mr. Ron Bunn  
Mr. and Mrs. R. G. Burkland  
Mr. and Mrs. J. R. Cades  
Mr. and Mrs. Sam Caldwell  
Mr. and Mrs. D. W. Carlsmith  
Ms. Susan M. Carter  
Mr. and Mrs. Daniel H. Case  
Mrs. Lillian F. Chinn  
Mr. and Mrs. Sungdai Choi  
Mr. Michael S. Chu  
Col. and Mrs. John R. Clifton  
Mr. Richard Clifton  
Mrs. Becky Connable  
Mr. and Mrs. J. H. Connors  
Mr. and Mrs. J. P. Cooke, Jr.  
Mr. and Mrs. J. A. de Boer  
Mrs. Bayard H. Dillingham  
Mr. and Mrs. Edward J. Doty  
Mr. and Mrs. D. L. Dressel  
Mr. and Mrs. C. F. DuBois  
Mr. James R. Dunlop  
Mr. and Mrs. Robert Dyson  
Mr. and Mrs. G. W. Fisher  
Mrs. Jean Moores Frank  
Mr. Andrew D. Friedlander  
Mr. and Mrs. R. M. Fujimoto  
Mrs. June V. Gibson  
Mr. Richard W. Gushman II  
Mrs. Grace Guslander  
Mrs. Douglas E. Guy, Jr.  
Ms. Laurinda Hadsell

Mr. and Mrs. F. Hedemann  
Mr. Cecil Heftel  
Mr. Larry E. Helber  
Mr. and Mrs. Chico Holland  
Mr. Charles H. Holt  
Mr. Lawrence P. Horwitz  
Mr. and Mrs. R. W. Hufford  
Mr. and Mrs. Alan M. Hyman  
Mrs. Esther H. Jantzen  
Mr. and Mrs. J. Robert Judd  
Ms. Marge S. Kam  
Mr. and Mrs. Alan C. Kay  
Mr. and Mrs. F. W. Klebahn  
Mrs. Howard Lang  
Mrs. Richard C. Latham  
Mrs. Marion L. Luke  
Mrs. Roberta MacNaughton  
Mrs. Dolores Martin  
Mr. George Mason  
Mr. Mark Masuoka  
Dr. and Mrs. Fujio Matsuda  
Mrs. William W. McCarthy  
Mrs. Kathy Merrill  
Mr. and Mrs. R. D. Moore  
Mrs. Virginia Moore  
Mrs. William E. Mussett  
Mr. and Mrs. G. L. Nottingham  
Ms. Barbara J. S. Okada  
Mr. and Mrs. W. W. Paty, Jr.  
Miss Gail Perry  
Mr. Robert J. Pfeiffer  
Miss Julia M. Putnam  
Mr. David W. Rae  
Mr. Larry Rodriguez  
Mr. Paul H. Rosendahl  
Miss Mary A. Roulette  
Mr. and Mrs. Louis T. Self  
Mr. and Mrs. J. A. Serrao  
Mr. and Mrs. J. C. Severson  
Mr. R. Sanderson Sims  
Mr. John P. Spierling  
Mr. George W. Sumner, Jr.  
Mrs. Charlotte Temple  
Mr. and Mrs. M. Thompson  
Mrs. Joseph Z. Todd  
Mrs. Joanne V. Trotter  
Mr. and Mrs. Robert Vanek  
Mr. Robert T. Watts  
Mr. David Watumull  
Mr. and Mrs. M. Wick, Jr.  
Mr. and Mrs. G. H. Wilcox  
Mr. and Mrs. L. J. Wilkie  
Dr. and Mrs. W. B. Wilson, Jr.

## SUPPORTING

Mrs. James J. Ackerman  
Mr. and Mrs. K. E. Adamson  
Mr. and Mrs. Davis E. Adler  
Mr. and Mrs. W. M. Africa, Jr.  
Ms. Mary O. Aiton  
Mrs. Jeanne Read Alden  
Mr. and Mrs. R. A. Anderson  
Mr. Edward R. Aotani  
Mr. Frank Atherton  
Mrs. Charles W. Atkinson  
Ms. Virginia L. Baird  
Mr. Peter D. Baldwin  
Mr. and Mrs. R. L. Banse  
Ms. Frances Baumer

Mr. Alan C. Beall  
Mrs. Florence H. Beard  
Mr. Wayne Benner  
Mr. and Mrs. I. S. Bickson  
Ms. Cynthia G. Blackwell  
Mr. and Mrs. David Boak  
Miss Lindy Boyes  
Mr. and Mrs. A. L. Brown  
Mrs. Zadoc W. Brown  
Mr. H. William Burgess  
Mrs. Elsie McG. Burke  
Ms. Alice Cameron  
Mrs. J. Kenneth Cameron  
Mrs. A. Hartwell Carter  
Mr. and Mrs. P. R. Cassiday  
Mr. and Mrs. J. C. Cavanagh  
Sen. Anthony K. U. Chang  
Mr. Keola Childs  
Mr. and Mrs. R. S. Ching  
Mr. and Mrs. Mel Choy  
Adm. and Mrs. B. A. Clarey  
Mr. James Cook  
Ms. Mazeppa K. Costa  
Mr. Don R. Cowell  
Mrs. C. Wilbur Craw  
Ms. Irene W. Croft, Jr.  
Mr. and Mrs. R. D. Crowe  
Mr. and Mrs. D. W. Curtis  
Mrs. Joan G. Damon  
Mr. and Mrs. W. D. Darling  
Dr. and Mrs. Harry K. Davis  
Miss Dee Dickson  
Mr. and Mrs. Lloyd M. Dunn  
Mr. and Mrs. W. F. Ehrman  
Mrs. Harold Eichelberger  
Mr. and Mrs. Wayne E. Ellis  
Mr. and Mrs. Gary R. Endres  
Mr. Peter S. Fithian  
Ms. Rosie U. Foster  
Mr. Robert M. Fox, AIA  
Mr. and Mrs. L. R. Fried, Jr.  
Mr. and Mrs. E. G. Galloway  
Mrs. Charles C. Gates  
Mr. and Mrs. Frank Geiger  
Mrs. Victoria Geist  
Ms. Marion Globor  
Mr. and Mrs. D. W. Y. Goo  
Mr. and Mrs. H. Goodale  
Ms. Carolyn J. C. Goodin  
Mr. and Mrs. R. S. Gordon  
Mr. Robert B. Graham, Jr.  
Mr. Alvin Grancell  
Mr. James S. Gray  
Mr. and Mrs. Sherwood R. H. Greenwell  
Mr. Chris J. Haig  
Dr. Joel Hamilton  
Mr. Kempton C. Hamilton  
Miss Liz Hamilton  
Mr. and Mrs. A. L. Harris  
Mrs. Doris Harrison  
Mr. and Mrs. D. G. Hasenyager  
Mr. Lawrence S. Heim  
Mrs. Margaret M. Hendrie  
Mrs. Masuye S. Hew  
Mr. and Mrs. M. M. Hirose  
Ms. Pegge Hopper  
Mr. Donald C. Ingram, Jr.  
Ms. Patricia D. Jacques  
Mrs. Marjorie Irwin James

Mr. William B. Jamieson  
 Mr. and Mrs. D. L. Jocelyn  
 Mr. Gordon L. Johnson, Jr.  
 Miss Drudi Johnston  
 Ms. Deborah Jones  
 Mr. and Mrs. W. G. Kast  
 Mr. and Mrs. Ronald Kats  
 Mr. George H. Kekoolani, Jr.  
 Dr. and Mrs. R. D. Kemble  
 Ms. Linda Kephart  
 Mr. and Mrs. Albert Kerry  
 Miss Sandra T. Kimura  
 Mrs. Garfield King  
 Ms. Helen Rebecca Larson  
 Miss Teresa Law  
 Mrs. James L. Lawrence  
 Mrs. Ruth F. Leavey  
 Mrs. Ralph G. Leavitt  
 Mr. Donald Lee  
 Mrs. Victoria E. Lee  
 Mr. and Mrs. Carl Lindquist  
 Mr. and Mrs. Gene Long  
 Mr. George R. Lowson  
 Mr. and Mrs. M. P. Mangan  
 Mr. George D. Manning  
 Mrs. Sarah Ann Martin  
 Mr. and Mrs. J. Masone  
 Mr. David E. Matthews  
 Mr. and Mrs. M. D. McCall  
 Mr. and Mrs. E. McD. Moir  
 Mrs. Ann Welch McDonald  
 Mr. Mike McKenna  
 William F. McKenzie, M.D.  
 Col. and Mrs. S. McMurdo  
 Mr. Putter Meinken  
 Mr. Ken Melrose  
 Mrs. Valerie L. Mendes  
 Mrs. Leon E. Mermod  
 Mr. Gregory A. Mills  
 Mr. and Mrs. W. C. Moore, Jr.  
 Mr. and Mrs. J. F. Morgan, Jr.  
 Mr. and Mrs. Stewart Morris  
 Mr. and Mrs. R. J. Nesbitt  
 Mr. and Mrs. V. W. Newbold  
 Mr. and Mrs. John F. Nielsen  
 Mrs. Lenore Nims O'Brien  
 Dr. and Mrs. E. J. O'Shaughnessy  
 Ms. Dorothea Ogdemli  
 Ms. Penny Pagliaro  
 Mr. and Mrs. Irvine H. Paris  
 Mr. and Mrs. W. J. Paris, Jr.  
 Ms. Janice W. Pechauer  
 Mr. Maurice Eric Peek  
 Judge and Mrs. Martin Pence  
 Mr. and Mrs. H. C. Penhallow  
 James Penoff, M.D.  
 Mr. and Mrs. D. T. Pietsch, Sr.  
 Mr. and Mrs. A. Poepoe  
 Mr. and Mrs. W. F. Quinn  
 Dr. and Mrs. R. G. Rigler  
 Mr. and Mrs. Carlos E. Rivas  
 Mr. and Mrs. K. S. Robbins  
 Mr. Russell S. Robinson  
 Mr. and Mrs. R. H. Rodby  
 Mr. and Mrs. Robert H. Rotz  
 Mr. Peter E. Russell  
 Mr. and Mrs. Michael Ryan  
 Mrs. Wallace G. Sanford  
 Mrs. Helene W. Scholl

Miss Phyllis Shea  
 Dr. and Mrs. Albert Simone  
 Miss Miriam E. Sinclair  
 Mrs. Mary C. Smith  
 Mr. and Mrs. Peter S. Smith  
 Mr. David Sox  
 Dr. and Mrs. Arthur Sprague  
 Mr. and Mrs. D. K. Sproat  
 Dr. and Mrs. E. C. Sterling  
 Mr. Edwin B. Stevens  
 Mr. and Mrs. E. Grant Story  
 Mrs. Barbara L. Suzui  
 Mr. Tony Taniguchi  
 Ms. Cynthia Thielen  
 Ms. Linda Ueda  
 Mr. and Mrs. W. W. Wade  
 Mrs. Elizabeth M. Waldron  
 Miss Sandy Weinrich  
 Mr. and Mrs. R. E. White, Jr.  
 Mr. Harry A. Whitten  
 Mrs. Virginia Wirtz  
 Mr. and Mrs. Robert C. Wo  
 Mr. and Mrs. A. J. Wriston, Jr.

## FAMILY

Dr. and Mrs. M. Ackerman  
 Mr. and Mrs. C. W. Adcock  
 Mr. and Mrs. R. Akinaka  
 Mr. Roy K. Alameida  
 Capt. and Mrs. W. B. Althoff  
 Mr. and Mrs. A. Andersen, Jr.  
 Mr. and Mrs. E. P. Anderson  
 Mr. and Mrs. M. J. Anderson  
 Dr. and Mrs. M. Anderson  
 Mr. and Mrs. Goro Arakawa  
 Mr. and Mrs. H. Ashendorf  
 Ms. Janet L. Atkins  
 Mr. and Mrs. J. M. Bailey  
 Mr. John A. Baker, Jr.  
 Mr. and Mrs. W. J. Baldwin  
 Mr. and Mrs. W. Barrere  
 Mr. and Mrs. C. B. Basler  
 RAdm. and Mrs. E. H. Batcheller  
 Mr. and Mrs. George H. Batt  
 Mr. and Mrs. Vincent Beaver  
 Mr. and Mrs. W. F. Bechert  
 Mr. and Mrs. R. K. Beers  
 Mr. and Mrs. Ben B. Beeson  
 Mr. and Mrs. Joseph Bender  
 Mr. and Mrs. H. F. Benner  
 Dr. and Mrs. Robert Berg  
 Mr. and Mrs. Ian Birnie  
 Mr. and Mrs. M. Blackburn  
 Mr. and Mrs. Roy Boehm  
 Mr. and Mrs. B. H. Bond, Jr.  
 Mr. and Mrs. R. H. Booth  
 Mr. and Mrs. C. Bostwick  
 Mr. Waldo Bowman  
 Mr. and Mrs. Greg Boyer  
 Mr. and Mrs. S. E. Boyum  
 Ms. Trina Brodsky and Stephen Saeks  
 Mr. and Mrs. Fred Brossy, Jr.  
 Mr. and Mrs. D. R. Brough  
 Ms. Helen L. Brugos  
 Mrs. Catherine Bukes  
 Mr. and Mrs. Bill Bullough  
 Mr. and Mrs. H. C. Burgess

Gordon and Mary Burton  
 Mr. and Mrs. Henry W. Buscher  
 Mr. and Mrs. O. A. Bushnell  
 Mr. and Mrs. R. F. Cain  
 Mr. and Mrs. E. Campbell  
 Mr. and Mrs. Vance Cannon  
 Mr. and Mrs. W. Carpenter  
 Shirley and Virginia Cartwright  
 Mr. and Mrs. James H. Case  
 Mr. and Mrs. R. J. Chalmers  
 Mr. and Mrs. E. R. Champion  
 Dr. Murray Chapman  
 Dr. and Mrs. R. Kulani Childs  
 Mr. and Mrs. Philip H. Ching  
 Ms. Sharon Ching  
 Dr. Willard T. Chow  
 Mr. and Mrs. Rush S. Clark  
 Dr. and Mrs. W. T. Cleghorn  
 Mr. and Mrs. Robert J. Coble  
 Mr. James Conti and Ms. Noel Sutherland  
 RAdm. and Mrs. R. E. Cook  
 Capt. and Mrs. J. L. Cook, Jr.  
 Mr. and Mrs. W. S. Coonley  
 Mr. and Mrs. C. D. Cooper  
 Mr. and Mrs. W. Cosgrove, Jr.  
 Mr. and Mrs. Doak C. Cox  
 Mr. and Mr. Richard H. Cox  
 Ms. Helen A. Craig  
 Mr. and Mrs. A. B. Craven  
 Mr. and Mrs. T. M. Culbertson  
 Mr. and Mrs. T. Dabagh  
 Mr. and Mrs. Martin L. Dana  
 Mr. and Mrs. S. B. Davis  
 Mr. and Mrs. D. Dawson  
 Mr. and Mrs. Judd Day  
 Mr. and Mrs. R. H. Deisseroth  
 Mr. Jim Delano  
 Mr. and Mrs. D. F. Dempster  
 Mr. and Mrs. M. Derzon  
 Mr. and Mrs. Robert Dinman  
 Mr. and Mrs. J. P. Dinmore  
 Col. and Mrs. W. S. Dixon  
 Mr. and Mrs. J. Doehring  
 Mr. and Mrs. S. Dowling  
 Mr. and Mrs. W. E. Duncan  
 Mr. and Mrs. Michael Dyer  
 Mr. and Mrs. John H. Earle  
 Mr. and Mrs. Richard Eber  
 Mr. and Mrs. J. Leon Edel  
 Mr. Bill Edwards  
 Mr. and Mrs. R. D. Emory  
 Mr. and Mrs. Henry Eng  
 Judge and Mrs. Raymond Engle  
 Dr. and Mrs. E. C. Evans, III  
 Michael and Joyce Farrell  
 Mr. and Mrs. E. L. Fenwick  
 Dr. and Mrs. D. Fergusson  
 Dr. and Mrs. M. Fischlowitz  
 Lt. Col. and Mrs. P. F. Fisher  
 Mr. and Mrs. Ralph Fisher  
 Mr. and Mrs. Kenneth Fiske  
 Joel and Vasanti Fithian  
 Mr. and Mrs. J. E. Fleming  
 Dr. and Mrs. Wendell Foo  
 Mr. and Mrs. F. Freitas  
 Capt. and Mrs. F. L. Fullaway  
 Mr. and Mrs. F. H. Furer  
 Mr. and Mrs. Ben Gamundoy  
 Col. and Mrs. Ron Garten

Mr. and Mrs. Martin Gendel  
 Mr. and Mrs. T. W. Gibson  
 Ms. Cynthia Gillette-Wenner  
 Mr. and Mrs. J. Gillmar  
 Mr. and Mrs. J. A. Gilman III  
 Mr. and Mrs. R. A. Girton, Jr.  
 Mr. and Mrs. G. C. Goetz  
 Dr. and Mrs. L. Gordon  
 Mr. and Mrs. R. B. Graham, Sr.  
 Mr. and Mrs. W. A. Grant  
 Mr. and Mrs. B. R. Graper  
 Mr. and Mrs. R. H. Greenfield  
 Mr. and Mrs. N. Greenwell  
 Mr. and Mrs. R. Gross  
 Mr. and Mrs. W. Gubelin  
 Mr. and Mrs. W. Gunderson  
 LCdr. and Mrs. E. H. Gunther  
 Mr. and Mrs. W. G. Hackler  
 Mr. and Mrs. E. A. Harger  
 Hollis Hart  
 Mr. and Mrs. M. H. Hastert  
 Mr. and Mrs. R. C. Hastings  
 Dr. and Mrs. J. C. Hathaway  
 Mr. and Mrs. Erik Hazelhoff  
 Mr. and Mrs. J. F. Helmer  
 Mr. and Mrs. R. Henderson  
 Mr. and Mrs. R. N. Herkes  
 Mr. and Mrs. A. G. Hernandez  
 Mr. and Mrs. R. B. Herrick  
 Mr. Robert L. Hind, Jr.  
 Mr. and Mrs. W. Hodgins  
 Mr. and Mrs. W. Hoffstot, Jr.  
 Mr. and Mrs. J. R. Hofmann, Jr.  
 Mr. and Mrs. John Hoogs  
 Mr. and Mrs. Glenn Horuchi  
 Mr. and Mrs. A. G. Horner, Jr.  
 Mr. and Mrs. R. A. Horst  
 Dr. and Mrs. M. M. Howell  
 Mr. and Mrs. T. P. Huber  
 Mr. and Mrs. D. R. Huddleston  
 Dr. and Mrs. J. F. Hughes  
 Mr. and Mrs. R. H. Hughes  
 Mr. John Hulten, Jr.  
 Mr. and Mrs. G. B. Hunt  
 Mr. and Mrs. M. Hurwitz  
 Mr. and Mrs. F. W. Hustace, Jr.  
 Adm. and Mrs. J. J. Hyland  
 Mrs. Susan Ing  
 Mr. and Mrs. F. G. Irwin  
 Ms. Connie Itagaki  
 Mr. and Mrs. Bruce Jackson  
 Mrs. Joetta Jackson  
 Mr. and Mrs. Harry Jefferson  
 Mr. and Mrs. D. Johanos  
 Mr. and Mrs. A. R. Johnson  
 Mr. and Mrs. D. D. Johnson  
 Mr. and Mrs. W. D. Johnston  
 Mr. and Mrs. H. R. Jordan  
 Mr. and Mrs. C. M. Jozaitis  
 Mrs. Charles S. Judd, Jr.  
 Mr. and Mrs. L. C. Kaapana  
 Mr. and Mrs. Philip S. Keat  
 Mr. and Mrs. Paul Kekuewa  
 Mr. and Mrs. Jerry Kermode  
 Ms. Mary W. Kimball  
 Mr. and Mrs. R. H. King  
 Mr. and Mrs. R. K. Kingsley  
 Dr. and Mrs. L. J. Kirkham  
 Mr. and Mrs. V. Knudsen  
 Mr. and Mrs. N. J. Kramer

Mrs. Patricia Kuehn  
 Mayor and Mrs. T. Kunimura  
 Mr. and Mrs. Steven Kyono  
 Mr. and Mrs. H. P. L'Orange  
 Mr. and Mrs. T. K. Lalakea  
 Mr. and Mrs. S. A. Lamb  
 Mr. and Mrs. E. C. Lambert  
 Mr. and Mrs. Robert Lamson  
 Mrs. Niki C. Landgraf  
 Mr. and Mrs. Tambi Larsen  
 Dr. and Mrs. G. H. Larson III  
 Mr. and Mrs. D. J. LeGrande  
 Mr. and Mrs. Bay S. Leber  
 Dr. and Mrs. Bernard Lee  
 Mr. and Mrs. Gordon Lee  
 Mr. and Mrs. Peter A. Lee  
 Mr. and Mrs. Curtis Len  
 Mr. and Mrs. Aaron Levine  
 Mr. and Mrs. R. M. Libbey  
 Mr. and Mrs. W. H. Livingston  
 Dr. and Mrs. John J. Lowrey  
 Mr. and Mrs. R. S. Lowrey  
 Mr. and Mrs. C. W. Lucas  
 Mr. and Mrs. Calvin W. Lui  
 Dr. and Mrs. Kwong Lum  
 Mr. and Mrs. Fred M. Lunt  
 Mrs. Orlando H. Lyman  
 Dr. and Mrs. Charles Maas  
 Mr. and Mrs. B. S. MacBride  
 Mr. and Mrs. George Mann  
 RAdm. and Mrs. G. P. March  
 Ms. Ann Mariposa  
 RAdm. and Mrs. R. Marlor  
 Dr. and Mrs. D. W. Martin  
 Mr. and Mrs. W. O. Martin  
 Mr. and Mrs. C. U. Mattoon  
 Mr. and Mrs. J. T. McClellan  
 Mr. and Mrs. S. McCombs  
 Mr. and Mrs. W. J. McCord  
 Dr. and Mrs. J. McCutcheon  
 Mr. and Mrs. G. S. McEldowney  
 Mr. and Mrs. Bruce McEwan  
 Mr. and Mrs. F. S. McGrail  
 Mr. and Mrs. Jack G. McGuire  
 Mr. and Mrs. P. W. McKenney  
 Dr. and Mrs. G. H. McMorland  
 Dr. and Mrs. P. I. McNamee  
 Mr. and Mrs. Peter Meldahl  
 Mr. and Mrs. Jeffrey Mermel  
 Mr. and Mrs. G. K. T. Mew  
 Mr. and Mrs. R. J. Meyer  
 Dean and Mrs. J. M. Michael  
 Mr. and Mrs. R. R. Midkiff  
 Dr. and Mrs. John C. Milnor  
 Mrs. Mildred Minville  
 Mr. and Mrs. F. S. Morgan  
 Mr. and Mrs. Richard Morris  
 Mrs. Jan Morton  
 Mr. and Mrs. H. Fred Mosher  
 Mr. and Mrs. C. Mulder  
 Dr. and Mrs. William Najjar  
 RAdm. and Mrs. W. T. Nelson  
 Dr. and Mrs. V. J. Niiranen  
 Mr. and Mrs. Jeffrey Nishi  
 Mr. Howard E. Noh  
 Dr. and Mrs. R. A. Nordyke  
 Mr. and Mrs. Emil Offer  
 Mr. and Mrs. Ken Oishi  
 Mr. and Mrs. E. T. Okada  
 Dr. Ray I. Okimoto

Mr. and Mrs. B. C. Oliver  
 Mr. and Mrs. R. Bryan Owen  
 Mr. and Mrs. R. E. Papst  
 Mr. and Mrs. Corey Y. S. Park  
 Mr. and Mrs. E. J. Parnell  
 Mr. and Mrs. J. R. Pavele  
 Mr. and Mrs. James C. Pell  
 Mr. and Mrs. G. J. Pemberton  
 Susan and Peter Percy  
 Mr. and Mrs. T. D. Perkins  
 RAdm. and Mrs. H. S. Persons  
 Mr. and Mrs. Ernest Peterson  
 Mr. and Mrs. R. E. Peterson  
 Ms. Lisa Peterson and LCdr.  
 Andrew Scontras  
 Mr. and Mrs. C. J. Pietsch  
 Mr. and Mrs. T. N. Piper  
 Mr. and Mrs. Hebden Porteus  
 Mr. and Mrs. Jonathan M. Potter  
 Mr. and Mrs. Jeff Proper  
 Mr. and Mrs. David Puder  
 Mr. and Mrs. Robert Purvis  
 Mr. and Mrs. G. Radford  
 Capt. Samuel M. Randall  
 Mr. and Mrs. R. H. Rath, Sr.  
 Mr. and Mrs. Tim Reed  
 Dr. and Mrs. G. M. Richards  
 Mr. and Mrs. T. J. Roseberry  
 Mr. and Mrs. Iain Munro Ross  
 Mr. and Mrs. Jim Samuelson  
 Ms. Jennifer Saville  
 Mr. John K. Schofield and  
 Ms. Barbara H. Urner  
 Col. and Mrs. Dale S. Seeds  
 Lt.Gen. and Mrs. G. P. Seneff  
 Mr. and Mrs. Wilmot L. S. Seto  
 Dr. and Mrs. H. M. Sexton  
 Mr. and Mrs. Lloyd Sexton  
 Drs. Ben and A. Jess Shenson  
 Mr. and Mrs. S. W. Shingle  
 Mr. and Mrs. C. R. Short  
 Mr. and Mrs. J. L. Simpson  
 Mr. and Mrs. G. C. Slain  
 Ms. Laura F. Sloatman  
 Mr. and Mrs. R. H. Sloggett, Sr.  
 Mr. and Mrs. Henry H. Smith  
 Jane and Jerry Smith  
 Mr. and Mrs. N. K. Smith  
 LCdr. and Mrs. William R. H.  
 Smith  
 Mr. and Mrs. R. L. Smith, Jr.  
 Mr. and Mrs. Robert Smolenski  
 Mr. and Mrs. S. E. Snyder, Jr.  
 Mr. and Mrs. Carl Sorem  
 Dr. and Mrs. John Spangler  
 Mr. and Mrs. C. F. Spillane  
 Mr. and Mrs. A. Spoehr  
 Mr. and Mrs. R. E. Sprink  
 Dr. and Mrs. Ulrich Stams  
 Dr. and Mrs. G. W. Starbuck  
 Capt. and Mrs. Samuel Steele  
 Mrs. Campbell W. Stevenson  
 Mr. and Mrs. K. A. Stotler  
 Mr. and Mrs. A. D. Stubenberg  
 Mr. and Mrs. S. A. Styan  
 Mr. and Mrs. C. R. Sutton  
 Mr. and Mrs. James Takano  
 Mr. and Mrs. E. K. Taniguchi  
 Mr. and Mrs. D. Teranishi  
 Mrs. Philip F. Thayer  
 Mr. and Mrs. C. L. Thoene, Jr.

Mr. and Mrs. L. Thomas, Jr.  
 Capt. and Mrs. Lewis G.  
 Timberlake  
 Mr. and Mrs. Allen Ting III  
 Dr. and Mrs. P. Q. Tomich  
 Mr. and Mrs. R. M. Torkildson  
 Mr. and Mrs. R. H. Towell  
 Mr. and Mrs. Gordon Tribble  
 Mr. and Mrs. A. F. Turner  
 Mr. and Mrs. James Turner  
 Mr. and Mrs. Richard L. Ulsh  
 Mr. and Mrs. Thomas Unger  
 Mr. and Mrs. J. L. Vaughan  
 Dr. and Mrs. R. Vaught  
 Capt. and Mrs. Dimitri J. Vellis,  
 USN (Ret.)  
 Mr. and Mrs. Carl C. Vetter  
 Mr. and Mrs. A. J. Vivas, Jr.  
 Dr. and Mrs. Garton E. Wall  
 Mr. and Mrs. Robert Walls  
 Mr. and Mrs. G. Watumull  
 Mr. and Mrs. D. L. Weers  
 Mr. Jesse C. Wells  
 Mr. and Mrs. M. B. Wheeler  
 Mr. and Mrs. Fred R. White  
 Mr. and Mrs. S. L. Whiting  
 Mr. and Mrs. F. P. Whittemore  
 Capt. and Mrs. D. B. Wikeen  
 Dr. and Mrs. John E. Wilcox  
 Mr. and Mrs. A. C. Wilcox, Jr.  
 Mr. and Mrs. C. C. Williams  
 Mr. and Mrs. S. E. Williams  
 Dr. and Mrs. L. Williamson  
 Mr. and Mrs. T. W. Wilson  
 Mr. and Mrs. George Winters  
 Mr. and Mrs. J. T. Witten  
 Mr. Hei Wai Wong  
 Mr. Christopher Wood  
 Mrs. James Woolaway  
 Mr. and Mrs. J. F. Woolley, Jr.  
 Dr. and Mrs. Dale Wortham  
 Mrs. Nancy Wright  
 Mr. and Mrs. N. J. Wright  
 Mrs. Viola Wrigley  
 Mr. Andrew Yanoviak  
 Mr. and Mrs. Paul T. Yardley  
 Mr. and Mrs. John C. York  
 Dr. and Mrs. Martin H. Zais

## INDIVIDUAL

Dr. Don Aanavi  
 Mrs. Marianne Abrigo  
 Miss Christie T. Adams  
 Mr. Norman C. Adams  
 Ms. Joan Ah Chin  
 Ms. Charlotte Ahrens  
 Mrs. Ann Aitka  
 Mrs. Sandi Akazawa  
 Capt. Robert H. Albert  
 Mrs. Claude C. Albritton, Jr.  
 Mrs. Elizabeth G. Alexander  
 Mrs. Maridell B. Alexander  
 Ms. Barbara Allen  
 Mrs. Barbara Allin  
 Mr. John S. Allin  
 Robert C. Allin, M.D.  
 Dr. Lawrence Allman  
 Ms. Jeanne Anderson  
 Mr. Ralph Anderson

Mrs. Eugene F. Anderson, Jr.  
 Ms. Dorine C. Andrews  
 Mr. John Andrews  
 Mr. Lowell Angell  
 Ms. Eileen M. Angliss  
 Mr. Donald H. Angus  
 Ms. Judy Applebaum  
 Miss Ellie Arden  
 Mrs. June M. Ardolino  
 Ms. Nancy Armstrong  
 Mrs. Shirley Armstrong  
 Mrs. Inez Ashdown  
 Mr. Alden I. Avery  
 Mrs. Patricia A. Avery  
 Ms. Nancy Backes  
 Dr. Duke Bainum  
 Mr. Kent A. Baker  
 Mr. John C. Ball  
 Miss Nancy Bannick  
 Mr. Lowell B. Barnhart, ASID  
 Mrs. Gail Bartholomew  
 Edyth J. Bassett  
 Mr. Donald Beaton  
 Mr. Douglas Beaton  
 Mr. James Beaton  
 Mr. Bruce Bebe  
 Ms. Pam Beck  
 Ms. Lynne Beetz  
 Ms. Betty Beggs  
 Mrs. Gracia Rasor Bell  
 Mr. Eric E. Bello  
 Mrs. Helen M. Benedict  
 Mr. Harvey Bennett  
 Ms. Shirley D. Bennett  
 Mr. Gerald Bergh  
 Mr. Bernard Bergstein  
 Mrs. Charlotte Berney  
 Ms. Bette Berry  
 Mr. David Bess  
 Miss Beatrice E. Billings  
 Mrs. Pauline W. Birtley  
 Ms. Lyn Black  
 Ms. Sandra R. Black  
 Mr. Gary L. Blaich  
 Ms. Sandra E. Blazel  
 Mrs. Kathy Bliquez  
 Ms. Malia Blokker  
 Ms. Luanne Bloom  
 Mr. Peter Blumberg  
 Ms. Elise Boardman  
 Bennie Boland  
 Mrs. W. Roger Booth  
 Ms. Sarah L. Botsai  
 Mrs. Anna Boudreault  
 Mr. Charles Bouslog  
 Mr. John R. Bowie, AIA  
 Mrs. Gordon W. Bradley  
 Mr. William S. K. Brandt  
 Mrs. Phyllis E. Brasser  
 Miss Maurine O. Brinegar  
 Ms. Balbi Brooks  
 Ms. Brooke Brown  
 Mr. David T. Brown  
 Mrs. Jessie E. Brown  
 Ms. Pamela J. Brown  
 Mr. Harold Browne  
 Mr. Timothy O. Bryan  
 Mrs. Elizabeth Buck  
 Mr. James C. Bull  
 Mr. William H. Burkhurst

Mrs. C. E. Burns, Jr.	Mr. Dee M. Crowell, AIA	Mrs. William Friedl	Mrs. Jane L. Hobler
Mrs. Dorothy A. Buscemi	Mr. Andy Cummings	Mrs. Claudine Fujii	Dr. William J. Hoe
Mr. W. M. Bush	Mr. Philip H. Cummings	Mrs. Ethel K. Fujioka	Mrs. Lois L. Holcomb
Mrs. Clara Bushnell	Ms. Charlotte Cusak	Mr. Reginald P. Gage, II	Ms. Natalie Holladay
Mr. H. A. Butler	Charles C. Custer, M.D.	Ms. Gay Gammie	Mrs. Berenice C. Holmes
Mrs. Mathew Cabot	Mrs. Estelle Cutler	Mr. John L. Garibaldi	Mr. Tommy Holmes
Mrs. Kathleen A. Callaghan	Ms. Claudia Cutsinger	Mrs. Margaret B. Garland	Mrs. Rose V. Holt
Mr. David L. Callies	Mr. Gordon H. Damon	Mrs. Violet Gaspar	Mr. Alan S. Holzman
Mr. Donald C. Camp	Mr. Richard C. Damon	Miss Frances Y. Gassner	Mr. Ralph C. Hook, Jr.
Mrs. Margaret M. Camp	Mr. C. F. Damon, Jr.	Mr. Taketoshi Gibo	Mr. Bernhard L. Hormann
Ms. Martha Campbell	Ms. Janet Daniel	Mrs. Patsy L. Gibson	Ms. Liz Howard
Mr. Paul F. Campbell	Mr. Gilbert N. Davis	Mr. Albert A. Gilding	Mrs. Marcella S. Howard
Mrs. Phoebe Campbell	Mr. Mark S. Davis	Mr. Lorin T. Gill	Mrs. Janete L. Howes
Mrs. Robert L. Campbell	Dr. A. Grove Day	Mrs. Stanley E. Gillmar	Mr. Barry S. Hudson
Mrs. Robert W. Campbell	Mr. Ron N. De La Cruz	Mrs. Eva M. Gilmartin	Mrs. Robert E. Huntzinger
Dr. Richard M. Candee	Ms. Patricia De La Vega	Mr. Frederik C. Gjessing	Mrs. Harry J. Hutchens
Mrs. Debbie Canfield	Mrs. Sybil Dominis Dean	Mrs. Amory Goddard	Miss Anne Hyde
Mrs. Hilda D. Cannon	Mrs. Barbara Del Piano	Ms. Lela Goodell	Ms. A. Miyo Ichijo
Mr. David Carey III	Mrs. S. A. Derby	Ms. Marie J. Gopez	Ms. Carole M. Ikeda
Ms. Barbara J. Carlos	Mrs. Susan Des Jarlais	Mr. Milton Goto	Mr. Goro Inaba
Ms. Mitsue Cook Carlson	Mr. Philip J. Deters	Miss Bonnie Graham	Mr. Fred Ito
Mrs. E. L. Carter	Mrs. Leslie M. Detor	Mr. Joe G. Grant	LtCol. James K. Iwamura
Ms. Darlene Carver	Mr. William C. Deutsch	Mr. James S. Greenwell	Mrs. Jane Jackson
Mrs. William B. Case	Mr. Fred A. Devereux	Mrs. Patricia O. Greenwell	Mrs. Genevieve H. Jacobs
Ms. Momi Cazimero	Ms. Jean Ellyn Dickinson	Mr. David Grossman	Mr. James B. Jacobs
Mr. Clark K. Champion	Mrs. Helen Duryea Dietz-Moore	Mrs. Jean A. Grover	Mrs. James L. Jacobs
Mrs. B. Sue Chang	Mrs. J. W. Dilks	Mrs. Natalie Gulledge	Mrs. Eleanor W. Jacobsen
Mr. Jerry K. L. Chang	Ms. Linda Diller	Ms. Kathy Gurski	Mr. Theodore R. James
Mr. Melvin K. Chang	Mr. Benjamin F. Dillingham II	Mr. Klaus O. Haberich	Mr. J. Fred Janssen
Dr. Helen Chapin	Mrs. Frances Dinnan	Miss Dorine S. Haglund	Ms. Mary Louise Jardine
Mr. Jim Charlton	Mrs. Carolyn E. Dixon	Mr. Michael E. Haig	Mrs. Doris Jasinski
Ms. Mary E. Charro	Ms. Vivian A. Dolson	Mrs. W. Howard Haines	Mrs. Ruth M. Jasper
Mr. Archie Chatterley	Mr. Kevin Dooley	Mr. Philip D. Haisley, Jr., AIA	Mr. Robert Jay
Mr. Dennis Y. K. Chen	Mr. Gordon Dougherty	Mrs. Pat Hall	Mrs. Mary Lou Jeffrey
Mr. Michael Chicvara	Ms. Dorothy B. Douthit	Mrs. Iris Hallaran	Ms. Joy Johnson Jeffus
Mrs. Cathy Ching	Mrs. Phyllis A. Drake	Mr. Take Hama	Ms. Andrea J. Jepson
Mr. Kenneth D. H. Chong	Mrs. Hazel K. Dukelow	Mr. Dickie Hamada	Mrs. Helga Gerlinda Jockel
Ms. Tomi D. Chong	Mrs. Elbridge A. Durant	Ms. Elaine Hara	Ms. Carol Johnson
Mrs. Leigh Anne Chorzempa	Ms. Janet Durkin	Mr. Drew Harman	Mr. Reverdy Johnson
Mrs. Ivanelle K. Choy	Mrs. C. Harry Dyer	Mr. Walter C. Harman	Mr. John Paul Jones
Mrs. Robert H. Christy	Ms. Coila Eade	Mrs. Paula E. Harper	Mrs. R. B. Joseph
Mr. Al Chun	Miss Sally H. Edwards	Mrs. Esther M. Hart	Ms. Elissa Josephsohn
Mr. Elroy J. Chun	Mr. J. Chris Edwardson	Mrs. Eva R. Hart	Mr. Ray Jost, ASID
Ms. Peggy Chun	David T. Eith, M.D.	Miss Nellie M. Hartman	Mr. Jonathan L. Jurevic
Miss Elizabeth W. Clark	Mr. David P. Eldredge	Mr. Michael Harworth	Mrs. Sidney Wheeler Ka'anapu
Mrs. Athalie R. Clarke	Mr. John C. Elliott	Mrs. John E. F. Hassell	Mr. Ernest K. Kai
Ms. Joanne Clarke	Ms. Patricia G. Englehard	Ms. Connie Hastert	Mr. Yasuto Kaihara
Mrs. Lori Claussen	Mrs. Mary T. English	Ms. Persis Hataria	Mrs. Robert S. Kalison
Dr. Paul L. Cleghorn	Miss Dorothy M. Evans	Mr. Cort Haverly	Mr. Stephen S. Kanda
Mrs. Barbara Cleveland	B. M. Eveleth, M.D.	Mr. Frank O. Hay, Jr.	Miss Yolanda Kaolawi
Ms. Judy Cochran	Mr. Tom Fanning, AIA	Mr. John M. Hayakawa	Mr. Howard Karr
Mrs. Renee D. Cochran	Miss Constance Farina	Mr. S. M. Hayamoto	Mrs. Ruth T. Katsunuma
Ellen Colburn-Rohn, Ph.D.	Ms. Welcome S. Fawcett	Ms. Betty Hearn	Dr. W. Philip Kau
Dr. Myron C. Cole	Mrs. Barbara C. Faye	Mrs. Nancy Hedemann	Mrs. Hazel Kauahikaua
Mr. Tomas J. Cole	Ms. Margaret L. Faye	Mrs. Hazel Hee	Miss Diane Kawauchi
Mr. Jesse C. Conde'	Mr. Michael A. Faye	Mrs. Leona Hee	Mr. John S. Kay
Miss Agnes C. Conrad	Ms. Lynn Fennerty	Ms. Ruth Heidrich	Ms. Jalna S. Keala
Mrs. Harrison R. Cooke	Leabert R. Fernandez, M.D.	Mr. Richard C. Helfer	Mr. Gard Kealoha
Mrs. Robert Cooke	Mrs. Sharon Fialco	Mr. William T. Henderson	Mrs. John Keat
Mrs. Charles M. Cooke, III	Mrs. Elizabeth A. Finefrock	Ms. Mary D. Henry	Mrs. Charles J. Kever
Mr. Charles M. Cooke, IV	Mr. John E. Finney	Mr. Robert A. Herlinger	Mr. Robert K. Kekuna, Jr.
Miss Merry Lee Corwin	Mrs. Sue E. Fitzgerald	Mrs. Colin J. Herrick	Miss Linda Kellam
Mr. Robert Costa	Mrs. Muriel M. Flanders	RAAdm. and Mrs. Ronald D. Higgins, USN (Ret.)	Mr. James S. Kellar
Mrs. Sally Cotter	Mrs. Elaine Flores	Mr. Calvin S. Higuchi	Mrs. Liz Keller
Ms. Melinda Cox	Mrs. Petty Floyd	Mr. Lawson T. Hill	Mrs. Keoki Kellerman
Mr. John Craft	Mrs. Virginia Fontaine	Mrs. Vern Hinkley	Ms. Florence Kelley
Ms. Mary Creech	Mrs. G. B. Formans	Miss Asa Hinochi	Mrs. Pat Kelley
Mr. Randolph Crossley	Mr. Jeffrey Fox	Mr. Tatsumi Hiramoto	Mr. Samuel Kendall
Ms. Merle D. Crow	Ms. Mary A. Fox	Ms. Betty J. Ho	Mr. Joseph Kennedy
	Mrs. Evelyn M. Frey		Mr. H. K. Bruss Keppeler

Mrs. Barbara H. Kerbox  
 Mrs. Kenneth R. Kerns  
 Miss Alice Kiewit  
 Mrs. George Killebrew  
 Miss Rosemary Kimbrell  
 Mr. W. Norman King  
 Mrs. Mary Joe Kinnison  
 Miss Audrey E. Kitagawa  
 Mrs. F. Willard Knapp  
 Mrs. Barbara Kneisley  
 Mrs. Hollinshead T. Knight  
 Miss Katherine Knight  
 Dr. Victor Kobayashi  
 Mrs. Virginia D. Koch  
 Ms. Noreen N. Koga  
 Mr. Robert M. Kohr  
 Mrs. Steven J. Kolar  
 Dr. Thomas Kosasa  
 Ms. Betty Krauss  
 Mrs. Shelagh S. Kresser  
 Miss Stacey Kube  
 Mr. Gaylord Kubota  
 Mr. Edward B. Kudlich  
 Mr. William G. Kueker  
 Mr. Alton Kuioka  
 Mrs. Blossom Kunewa  
 Mrs. Rusty Kunz  
 Miss Harriet Y. Kuwamoto  
 Mr. Gerald W. G. Kwock  
 Miss Dominique La Page  
 Ms. Michelle La Rue  
 Ms. Elizabeth Lacy  
 Mrs. J. R. Laidlaw  
 Mrs. Ardith C. Lam  
 Miss Lezlie A. Lapata  
 Mr. Edward B. K. Lapsley  
 Mr. Hiram Lau  
 Ms. Janice Lau  
 Mr. Roger Lau  
 Mr. Henry G. Law  
 Mrs. Mansel E. Law  
 Mrs. Grace Mary Lawson  
 Mrs. Ranita R. LeGrande  
 Mrs. Doris M. Leach  
 Dr. Taki Lebra  
 Mr. Alan Prescott Lee  
 Ms. Edgy Lee  
 Ms. Gwynne J. Lee  
 Mrs. Katherine B. Lee  
 Mr. Van Lee  
 Mr. Otto Lehrack  
 Mrs. Mary Leineweber  
 Ms. Louise F. Lembeck  
 Mrs. Melville L. Lemon  
 Dr. Patricia Leong  
 Ms. Pat B. Levy  
 Mrs. Dudley C. Lewis  
 Mrs. Patti Lindberg  
 Ms. Judy Lindeman  
 Mr. Thomas M. Linn  
 Dr. Jocelyn Linnekin  
 Mrs. Jane Lipp  
 Dr. George Liu  
 Rep. Michael Liu  
 Mr. Tom Loffman  
 Ms. Diane T. Logsdon  
 Mr. David Lomas  
 Mr. Douglas Long  
 Mr. Keith Long  
 Ms. Jun Look

Mr. John E. Loomis  
 Miss Diana Lord  
 Ms. Cathy M. Lowder  
 Mr. James C. Luckey  
 Mrs. Alison K. Luke  
 Dr. Albert W. H. Lum  
 Mr. Wing Tek Lum  
 Mr. Douglas P. Luna  
 Ms. Vivian Piilani B. Luning  
 Mrs. William B. Lupton  
 Ms. Anajean Lusk  
 Mr. Samuel A. B. Lyons  
 Mr. Michael B. MacBride  
 Mr. Steven E. MacBride  
 Mrs. Heather B. MacGregor  
 Capt. Colin J. MacKenzie  
 Mr. Stephen H. MacMillan  
 Ms. Cat MacShane  
 Mr. Douglas Madden  
 Mr. Kelsey Maddox-Bell  
 Mr. Red Mahan  
 Mrs. Alvin I. Malstrom  
 Mr. David W. Malvin  
 Mr. W. E. Manning  
 Mrs. A. Lester Marks  
 Mr. Michael J. Marks  
 Ms. Marilyn Marsh  
 Mr. P. A. Martineau  
 Rep. Barbara C. Marumoto  
 Mr. Glenn E. Mason  
 Mrs. Barbara Mateo  
 Mr. Lorrin T. Matsunaga, AIA  
 Mrs. Amber Matthews  
 Mr. Philip P. Maxwell, Jr.  
 Mr. Stanley K. May  
 Ms. Eunice McCain  
 Mrs. James McCall  
 Mrs. Vern I. McCarthy, Sr.  
 Ms. Barbara H. McDaniel  
 Mrs. W. C. McDermid  
 Mr. Floyd J. McDonald  
 Ms. Ruby P. McDonald  
 Mr. Morton McGinley  
 Mrs. Elizabeth May McHaney  
 Mrs. Beverly H. McKeague  
 Mrs. Nancy I. McMullan  
 Mrs. Lola Mench  
 Mr. John Mendelsohn  
 Mr. Gilbert Mendelson  
 Mrs. William C. Meyer  
 Mrs. Jeanne N. Michael  
 Miss Patricia Mielke  
 Miss Judy Mikeska  
 Mr. Presley J. Millare  
 Mrs. George H. Mills  
 Mrs. Charline Mitchell  
 Ms. Muffy Mitchell  
 Mr. Norman Mitchell  
 Mrs. May A. Moir  
 Ms. Alexis Montgomery  
 Mrs. Francis R. Montgomery  
 Mr. Ross W. Moody  
 Mrs. Elizabeth Moran  
 Mr. Paul F. Morgan  
 Mrs. Thelma J. Morgan  
 Mrs. Elizabeth M. Morris  
 Mr. John A. Morris  
 Mr. Wilmer C. Morris  
 Mrs. Martha B. Moss  
 Ms. Susan J. Moss

Ms. Frances I. Mossman  
 Ms. Nancy A. Mower  
 Mrs. Eleanor Muehle  
 Miss Ruth L. Munro  
 Ms. Virginia D. Murison, AIA  
 Mrs. Ruth P. Murray  
 Ms. Martha J. Myers  
 Mr. Eddy N. Nagao  
 Mr. Ralston Nagata  
 Mrs. Stephen V. Nahl  
 Ms. Genevieve A. Nahulu  
 Bishop Dwight R. Nakamura  
 Mr. Solomon K. Naone  
 Ms. Victoria Nasser  
 Mr. Lyle E. Nelson  
 Mrs. Herman D. Nichols  
 Miss Dianne Nielsen  
 Mr. Peter Nishimitsu  
 Ms. Gail T. Nishimura  
 Mr. Raymond Noh  
 Mr. Greg Northrop  
 Mrs. Katharine F. Norwood  
 Mr. Katashi Nose  
 Mrs. Diana R. Nui  
 Mrs. M. L. O'Brien  
 Ms. Patricia O'Connor  
 Mr. John B. O'Donnell  
 Mrs. Ethel U. O'Neil  
 Mr. Shungo Okubo  
 Mr. Robert E. Oliver  
 Mr. Susumu Ono  
 Mrs. Robert Orlik  
 Mrs. Garret Oshiro  
 Ms. May Oshiro  
 Mr. Chip Owen  
 Ms. Claire Paige  
 Mrs. T. M. Parker  
 Ms. Margaret E. Patterson  
 Mr. James A. Paulauskas  
 Mrs. H. D. Paxton  
 Mrs. Marguerite Peach  
 Ms. Nancy Lyman Peacock  
 Ms. Patricia C. Peacock  
 Mrs. Leilani Peale  
 Mrs. Charles Pedesky  
 Mr. David Penhallow  
 Mrs. Martha Peterson  
 Mrs. Joyce M. Peterzell  
 Ms. Dorothy C. Phillips  
 Ms. Connie Pickett  
 Ms. Judith Pieklo  
 Mr. LaRue W. Piercy  
 Mr. David T. Pietsch, Jr.  
 Mrs. Max L. Pilliard  
 Mr. Richard Pollock  
 Miss Cecilia Ponte  
 Mrs. Beryl M. Pope  
 Dr. Mary R. Porter  
 Mr. Charles Barton Potter  
 Mr. Gordon Potter  
 Miss Laura L. Potter  
 Mr. James Hugh Powers  
 Mrs. Robert H. Prahler  
 Mr. David W. Pratt  
 Miss Joan C. Pratt  
 Ms. Lenore M. Prehler  
 Mr. Glenn Preus  
 Mrs. Heidi G. Price  
 Ms. Sue Prosser  
 Mrs. Robert A. Purdue

Mrs. Nanette Purnell  
 Mrs. Dorothy R. Pyle  
 Mrs. Leilani Pyle  
 Mrs. Barbara M. Quinlan  
 Ms. Cynthia B. Quisenberry  
 Mr. Alan C. Ragains  
 Mr. U. J. Rainalter, Jr.  
 Mr. Robert A. Ramsay  
 Mrs. M. L. Randolph  
 Mr. Paul Rasmussen  
 Mr. Carl L. Reber  
 Ms. Donna B. Reber  
 Ms. Rosemary Reder  
 Mrs. Eunice Reed  
 Mr. Robert G. Reid  
 J. I. Frederick Reppun, M. D.  
 Miss G. Jean Richards  
 Mrs. Loretta Richert  
 Mrs. Pualani Rivero  
 Mrs. Richard E. Robb  
 Mrs. Barbara K. Robello  
 Ms. Jeanne Robertson  
 Ms. Barbara Robeson  
 Mrs. Janet Robinson  
 Mrs. Joan Robinson-Whitaker  
 Mrs. Julia W. Rodenhurst  
 Mr. Frank T. Rogers  
 Mr. Robert Rogers  
 Ms. Susan Rogers-Aregger  
 Ms. Jean E. Rolles  
 Mr. Jack M. Rolls, Sr.  
 Mr. Sam Rolph  
 Dr. Roger G. Rose  
 Ms. Lois Rosebrook  
 Mrs. Violet-Marie Rosehill  
 Mrs. Herman B. Rosen  
 Mrs. Suzanne E. Roza  
 Mr. Steve Rummel  
 Mrs. Jamie N. Runnells  
 Mr. J. Ward Russell  
 Mr. Steve Salis  
 Mr. Frank Salmoiraghi  
 Mrs. Marian A. Sandelin  
 Mr. James Sanders  
 Dr. Jack H. Scaff, Jr.  
 Ms. B. Schaefer  
 Mr. William A. Schauer, Jr.  
 Ms. Danya Schiappa  
 Mrs. Geraldine Hyde Schipper  
 Mr. Robert C. Schmitt  
 Mrs. L. W. Schutz  
 Ms. Dorothy Scott  
 Ms. Marjorie B. Scott  
 Mr. Walter Scott, Jr.  
 Dr. Niall M. Scully  
 Ms. Sheryl Seaman  
 Mrs. June O. Sebring  
 Ms. Marion Senger  
 Mrs. Polly Seto  
 Mrs. Jack Shea  
 Miss Alice Shelly, FCSI  
 Mr. Edward L. Sheridan  
 Ms. Ellen F. Sherman  
 Mr. Robert J. Sherwood  
 Mr. David Shibata  
 Mrs. Sindee Sieber-Remenih  
 Miss Virginia Siewertsen  
 Mrs. Nancy Simmons  
 Ms. Margaret E. Sinclair  
 Mr. Mike Sith

Ms. Anne Slocum-Main  
 Ms. Esther A. Smith  
 Mrs. Gilberte A. Smith  
 Mrs. J. Don Smith  
 Ms. Jenny R. Smith  
 Mr. Michael L. Smith  
 Mrs. William O. Smith  
 Dr. Bart Smith, D. C.  
 Ms. Mary K. Smith-Nahl  
 Mr. Lloyd J. Soehren  
 Mr. S. Steven Sofos  
 Ms. Stephany L. Sofos  
 Ms. Linn M. Sol  
 Mrs. Barbara N. Soong  
 Mrs. Mae Soong  
 Mrs. Howard W. Soule  
 Mr. Walter Southward  
 Mrs. John H. Southworth  
 Mrs. Pohai Souza  
 Mrs. W. C. Speer  
 Mrs. Patt R. Spencer  
 Mr. Edward Stackhouse  
 Mrs. Marilyn Stassen-McLaughlin  
 Miss Ann Stegmaier  
 Mr. Ross W. Stephenson  
 Mrs. Herta M. Stevens  
 Mrs. Jane Stevenson  
 Ms. Page Stevenson  
 Miss Alice A. Stewart  
 Mrs. Carolyn Stolhand  
 Mrs. Paulette Stone  
 Ms. Linda Streitfeld  
 Ms. Mary Anne Stubenberg  
 Ms. Sheila Sumaylo  
 Mrs. Richard L. Summers  
 Mr. Richard C. Sutton, Jr.  
 Dr. Francis K. Sylva  
 Mrs. Robert C. Sylva  
 Ms. Ruth Tabrah  
 Ms. Chieko Tachihata  
 Mr. Gerald Takano  
 Mrs. Rufus M. Takitani  
 Dr. Paul Y. Tamura  
 Ms. Shu-Po Tang, ASID  
 Mrs. Kinuko Taniguchi  
 Mrs. Francis Tappaan  
 Mrs. Julie Terrell  
 Mr. John M. Tess  
 Mrs. Sue Tetmeyer  
 Miss R. Susie Thieman  
 Ms. Jean Thomas  
 Mr. Arthur Kimbal Thompson  
 Ms. Barbara Thompson  
 Mrs. Sylvia Thompson  
 Mrs. Barbara J. Thurston  
 Mrs. Barbara Tilley  
 Mr. Donald H. Tokunaga  
 Mrs. Patsy A. Towill  
 Mr. James Tracz  
 Toni Trammer  
 Miss Gladys Traut  
 Mrs. Barbara K. Trems  
 Mrs. C. W. Trexler  
 Dr. Jerome L. Tucker  
 Mr. Gene Turchi  
 Mrs. Kathleen Turley  
 Mrs. Farrant L. Turner  
 Mr. Clifford Tuttle  
 Mrs. Deborah Uchida

Mr. Karl S. Ulrich  
 Mrs. William Upchurch  
 Miss Charlyce R. Uyebara  
 Ms. Ruth Valeur  
 Mrs. Herbert G. Van Orden  
 Mrs. J. Alexander Veech  
 Mr. Robert L. Vieira  
 Mr. Roy A. Vitousek, Jr.  
 Ms. Ann Vollman  
 Mrs. Mary Anne Vorfeld  
 Mrs. Hilda H. Voss  
 Mrs. Norah E. Walker  
 Miss Jean M. Wall  
 Mr. Howard D. Wallace  
 Mrs. Helen Ware  
 Ms. Pamela H. Warnken  
 Mr. Craig Watanabe  
 Mrs. A. D. Waterhouse  
 Mrs. Norma L. Watson  
 Mrs. Sue Watson  
 Mrs. R. E. Watts  
 Mrs. Dorothy Davis Webb  
 Ms. Gertrude L. Weidig  
 Mrs. Dorothy Weight  
 Ms. Sandra J. Wells  
 Mrs. Katherine H. Wery  
 Mrs. Ann W. Wheat  
 Mrs. Rina M. Whelan  
 Ms. Gail White  
 Mrs. R. E. White  
 Mrs. Thomas K. White  
 Mrs. Tina Lyman Whitmarsh  
 Mrs. Iris P. Widner  
 Mr. Dennis Wiens  
 Mr. Howard C. Wiig  
 Mrs. S. W. Wilcox  
 Ms. Lois B. Wilder  
 Mrs. Norma M. Williams  
 Mrs. Rodney F. Williams  
 Mr. James I. Williamson  
 Mrs. Charline B. Wilson  
 Ms. Jean E. Wilson  
 Ms. Susan A. Wilson  
 Ms. Cynthia Winegar  
 Mr. Wayne Wiram  
 Mr. Thomas S. Witten  
 Mrs. Edith P. S. Won  
 Ms. Choy-Ling Wong  
 Mr. Eric Wong  
 Mrs. Napualani V. Wong  
 Mr. Ross Wong  
 Mrs. Hart D. Wood  
 Mr. Richard G. Wood  
 Mr. Richard D. Wood  
 Ms. Louise T. Wooden  
 Ms. Linda C. Woodstock  
 Mr. Heaton L. Wrenn, Jr.  
 Mrs. Eric Wright  
 Miss Midgieann L. Wright  
 Mrs. Kathleen Uilani Wyosnick  
 Ms. Haruko Yabusaki  
 Mrs. Harriet Yamada  
 Mrs. Sarah Lee Yang  
 Mrs. Kathy Yeager  
 Ms. Mildred Yee  
 Ms. Ann K. Yoklavich  
 Mrs. Marjorie Yokum  
 Mrs. Mary Richards Yort  
 Mrs. John Youell  
 Mrs. J. Gray Zabriskie  
 Mr. William R. Zappas  
 Mrs. Adrian Zecha  
 Mrs. Elaine Zinn

## STUDENT/RETIREE

Mrs. Stephanie Acopan  
 Mrs. Irene Agena  
 Mrs. Arthur Aiwohi, Jr.  
 Mrs. Suzanne G. Akim  
 Mr. Norman Algiers  
 Ms. Lori Ann Amaki  
 Mr. William T. Atkins  
 Ms. Bethanee T. Austin  
 Mrs. Dorothy E. Baker  
 Ms. Elizabeth Baker  
 Ms. Jean L. Barker  
 Mrs. Marjorie M. Barrett  
 Ms. Doris V. Bassity  
 Mr. Vincent J. Bell  
 Mrs. G. F. Berger  
 Mrs. M. Bevacqua  
 Mrs. C. J. Birnie  
 Ms. Mary L. Bishop  
 Mrs. Joy N. Black  
 Mrs. Lillian Bloomfield  
 Ms. Marian L. Boeke  
 Mr. William O. Boland  
 Mrs. Hannah E. Bonsey  
 Mr. Richard Bordner  
 Mrs. J. P. Bowman  
 Mrs. Elizabeth S. Bowyer  
 Mrs. Isabel Boyen  
 Mr. William R. Brainerd  
 Ms. M. H. Briand  
 Mrs. Lydia N. Brickwood  
 Ms. Lerae Britain  
 Ms. Sally Brockman  
 Mrs. Elly Brodsky  
 Mrs. C. A. Brodwolf  
 Mr. Sidney Brooks  
 Mrs. Helen M. Brown  
 Ms. Lucile F. Brown  
 Mrs. Ward W. Brown  
 Miss Irva Brubacher  
 Mr. Kenneth J. Bull  
 Ms. Katharine Burmeister  
 Mrs. John W. Bustard  
 Ms. Leimomi Cabbab  
 Mr. Emmett Cahill  
 Mrs. Helen S. Cameron  
 Miss Laurie Canencia  
 Mrs. Charlotte Carahasen  
 Mrs. M. Carlson  
 Dr. William Carse  
 Mrs. H. Shaw Carter  
 Mrs. Wiona V. Chaney  
 Mr. Howard Chang  
 Mr. Tin-Yuke Char  
 Mrs. G. R. Cheeley  
 Ms. Linda Chock  
 Mr. Roy Christian  
 Miss Esther Y. Chun  
 Ms. Shayna Collins  
 Mrs. Irma M. Conwell  
 Mr. Frank E. Cook  
 Mrs. Gerald R. Corbett  
 Mr. Jack K. Corbett  
 Mr. Fred L. Creager  
 LCdr. W. H. Cressman, USN  
 (Ret.)  
 Mr. Richard Cundy  
 Mrs. Ruth D. Cushnie  
 Mrs. Lois Dambacher  
 Mr. Jeff D. Daniel  
 Mrs. Peggy Daniel

Mr. Robert Davis  
 Mrs. Ralph De Mars  
 Mrs. Walter de Renne  
 Mrs. Virginia Devine  
 Mrs. Jan Dorrance  
 Ms. Ruth M. Dowling  
 Miss Kristin Dunlap  
 Mrs. Shirley Eardley  
 Miss Bernice Ebinger  
 Mrs. Clara Elliot  
 Mrs. D. S. Embree  
 Mrs. Robert Engelhardt  
 Ms. Nancy B. Evans  
 Mr. Thomas Fair  
 Mrs. Dorothy Farmer  
 Ms. Denby Fawcett  
 Mrs. Nettie Filak  
 Miss Susan Fink  
 Mrs. Janene F. Fisher  
 Ms. Stephanie L. Fitzpatrick  
 Mrs. Anne L. Flagg  
 Ms. Joan M. Flaharty  
 Mr. W. Patrick Flanagan  
 Mrs. Catherine Fontes  
 Mrs. Evarts C. Fox  
 Mr. Randall J. Francisco  
 Miss Sophie M. Frandsen  
 Mr. Evalin Frank  
 Mrs. Dorothy Frasure  
 Mr. Mits Fujita  
 Ms. Janet Wyatt Fullerton  
 Mrs. Lenora M. Gaddis  
 Ms. Jane Gallagher  
 Mrs. Dalisay Galura  
 Mrs. Frances E. Gammon  
 Mrs. Janet L. Garcia  
 Mr. Walter F. Garcia  
 Mrs. Claudia W. Gauen  
 Mrs. Jeanne B. George  
 Mrs. Luigi G. Giacometti  
 Miss Lois Gordon  
 Mr. J. Richard Gossett  
 Mr. Richard A. Greer  
 Ms. Thelma F. Greig  
 Mrs. Maria C. Griffin  
 Mrs. Robert H. Grosjean  
 Mr. Steven Guttman  
 Mr. Duane Hahn  
 Mrs. Celia M. Hailperin  
 Mrs. Charles W. Hancock, Jr.  
 Mrs. Valerie M. Hannon  
 Ms. Kitty K. Hardeck  
 Mr. George P. Harris  
 Mrs. Sam Harris  
 Ms. Joanne Harriss  
 Mrs. Fritz Hart  
 Mr. Richard S. Hart  
 Mrs. Patricia L. Hartwell  
 Mrs. Clark J. Hastert  
 Mr. Robert F. Hemphill  
 Mr. Will J. Henderson  
 Ms. Louise R. Hewett  
 Mr. Saichi Higashi  
 Miss Kathleen V. Higgins  
 Mrs. Jessie F. R. Hoomalu  
 Miss Irmgard Hormann  
 Ms. Connie Hoshibata  
 Mrs. Carol Howard  
 Mr. John W. Hoxie  
 Mrs. Muriel L. Isherwood

Mrs. Asako Ishimoto  
 Mr. David L. Jellinger  
 Mr. Allan Jim  
 Mrs. Betty L. Johnson  
 Miss Evlyne I. Johnson  
 Mrs. Diane Kabashikawa  
 Ms. Patsy K. Kai  
 Ms. Karen Kane  
 Miss Lani Kea Kanehe  
 Mrs. Gene Kay  
 Mrs. Carol C. Keane  
 Mr. H. J. Keeley  
 Mrs. Peggy Keller  
 Mrs. Marian Kelly  
 Mrs. Cecily H. Kikukawa  
 Miss Laurie Kimura  
 Mrs. Maurice King  
 Mrs. Annetta Kinnicutt  
 Mrs. Lois Kircher  
 Mr. Guy Kirkendall  
 Ms. Valerie Kono  
 Miss Beatrice H. Krauss  
 Ms. Maile Kruse  
 Mrs. Kini O'Keahi Kua'ana  
 Mrs. Karl Kuppe  
 Mrs. David E. Larsen  
 Mrs. Constance B. Lawyer  
 Ms. Linda M. Le Geyt  
 Mr. James Lennon  
 Mrs. Marge Lennon  
 Rep. Andrew D. Levin  
 Mr. Addison W. Lewis  
 Mrs. Virginia May Lewis  
 Mr. James Linn  
 Mrs. Joe Lipinski  
 Mrs. Rosalie W. Loomis  
 Mr. Malcom H. Love  
 Mrs. Charles H. Ludden  
 Mrs. Charlotte Lum  
 Mrs. James Lumeng  
 Mrs. D. Belden Lyman  
 Mr. Albert L. Lynch  
 Ms. Coline MacLean  
 Ms. Alison MacBride  
 Mrs. Alex MacGregor  
 Mrs. Lillie E. Mackenzie  
 Ms. Constance R. Major  
 Mrs. Beverly Maldonado  
 Mr. Craig Matthews  
 Mrs. Donald C. Matthews  
 Mrs. Jessie C. Matthias  
 Mr. Benjamin May  
 Mrs. Gwendolyn R. May  
 Miss Lee McCaslin  
 Mrs. E. J. McClurkin  
 Ms. Eleanor McCoy  
 Mrs. Albert E. McGillivray  
 Ms. Pearl Meserve  
 Mrs. Bernice M. Meyer  
 Mrs. Fay Wren Midkiff  
 Ms. Patricia Miller  
 Mr. W. Robert Miller  
 Mrs. Barbara Mitchell  
 Dr. Donald D. Mitchell  
 Mrs. Glenn G. Mitchell  
 Mr. R. E. Mohlie  
 Mr. R. Burke Morden  
 Mrs. W. A. Morrison  
 Mrs. Margaret E. Mullahey  
 Brig. Gen. F. P. Munson

Mrs. Juliette Nakashima  
 Mrs. Mabel Neves  
 Mrs. Kathleen Nielsen  
 Ms. Norma Nishikawa  
 Mrs. Rose Jackie Norbrega  
 Mrs. William E. Norcross  
 Ms. Shirley Nordyke  
 Mr. Christopher Norrie  
 Mrs. Eileen M. O'Brien  
 Miss Terry O'Brien  
 Ms. Vivian A. O'Rourke  
 Miss Margaret T. Ohta  
 Mrs. Vladimir Ossipoff  
 Ms. Erin S. Palmer  
 Ms. Winona Paschoal  
 Mr. Gerardo A. Pascua  
 Ms. K. Lokelani Patrick  
 Rev. Kenneth D. Perkins  
 Dr. R. Perry  
 Mr. Paul C. Peters  
 Mrs. Carol L. Phillips  
 Mrs. Charles Podorean  
 Ms. Dawn Poli  
 Mrs. Louis Pope  
 Mrs. E. M. Porter  
 Miss Susan Porter  
 Mr. Kenneth J. Pratt  
 Mrs. Howard W. Prettyman  
 Mrs. Sharon Price  
 Mrs. Walter Price  
 Mrs. Dora E. Proffitt  
 Mrs. Rosalie Prussing  
 Mr. Kulani Purdy  
 Mrs. Josephine Racho  
 Miss Mildred L. Read  
 Ms. Freda Reeser  
 Mrs. Mary Deas Reynolds  
 Mrs. Jessie S. Ricketts  
 Mrs. Sheila Rigby  
 Miss Barbara Ritchie  
 Mr. J. Albert Roesch  
 Mr. Charles O. Rogers  
 Mrs. Miriam Rogers  
 Mr. D. Campbell Ross  
 Mrs. Margaret D. Ross  
 Mr. Louis E. Roth  
 Mr. John Ryman  
 Mrs. Janet A. Sanborn  
 Miss Eileen F. Sander  
 Mrs. Beatrice N. Savage  
 Bim Schelderup  
 Miss Yuki Schenkenberg  
 Mrs. Joanna Scherer-Meyers  
 Miss Beth Schroeder  
 Mr. Kelsey Sears  
 Mrs. Marc Seastrom  
 Mr. DeLos A. Seeley  
 Mrs. Anna Marie Seplak  
 Mrs. Marilynne O. Shiery  
 Mrs. E. B. Shirk  
 Mrs. Lloyd E. Short  
 Mrs. Joseph Sikes  
 Mr. John S. Silva, Jr.  
 Mrs. Frederick Simpich, Jr.  
 Ms. Clara Simpson  
 Mrs. H. Clifford Smith III  
 Mrs. Ruth E. Snook  
 Mrs. Alfred P. Souza  
 Ms. Joane Souza  
 Mrs. Isobel Spangler  
 Mr. C. H. Spiegelberg  
 Mrs. Edith G. Stanley  
 Mrs. Herbert Stecker

Mr. Lynn Strahl  
 Mrs. Anna E. Sturgis  
 Ms. Melinda Stutz  
 Ms. Lillian Sullivan  
 Mrs. Frances L. Sutherland  
 Mrs. Harry W. Sutton  
 Mrs. Sarah L. Sweeney  
 Ms. Katharine Tehranian  
 Ms. Lois Lee Thompson  
 Mrs. Antonette Thomson  
 Mrs. Douglas B. Thomson  
 Mr. James P. D. Thropp, Jr.  
 Mrs. Fred Thurmond  
 Bernie Tolentino  
 Mrs. Helen Judd Toms  
 Miss Maydean K. L. H. Torres  
 Mr. Robert Townsend  
 Mrs. Joel Trapido  
 Mrs. Genevieve F. Trout  
 Mrs. Ruby Troy  
 Mr. Edgar B. Twelker  
 Mrs. Breck Tyson  
 Mr. Marc D. Udoff  
 Ms. Terry H. Uyehara  
 Miss Betty B. Vander Hyden  
 Mrs. J. Peter Wilmaire  
 Ms. Roveda W. Vollert  
 Miss Eileen Wagoner  
 Miss Eunice Wallace  
 Ms. Dorothy Wallich  
 Dr. John N. Warner  
 Mr. Willis L. Warner  
 Mrs. Alice C. Wedemeyer  
 Mrs. Donald F. Weiss  
 Mrs. Amanda Westlake  
 Mrs. L. Harold Whitaker  
 Mrs. Baldwin Whittier  
 Mrs. Barbara C. Wiebenga  
 Ms. Linda Wiig  
 Mrs. Louise Wildman  
 Miss Jeanie Williamson  
 Mrs. Margaret Willoughby  
 Mrs. Anita Wong  
 Mr. Sau Hoy Wong  
 Mr. Linton Yee  
 Mrs. Fred O. Young  
 Miss Patricia Zane  
 Ms. Rebecca Zuckerman  
 Mr. Donald Zwald

## CORPORATE HERITAGE ASSOCIATES

Alexander & Baldwin, Inc.  
 Aloha Airlines  
 American Express Travel  
 Related Services Co., Inc.  
 Amfac Hawaii, Inc.  
 APCOA, Inc.  
 Arthur Young & Company  
 Associates Four  
 Bank of Hawaii  
 Budget Rent A Car Systems,  
 Inc.  
 C. S. Wo Foundation  
 Coca-Cola Bottling Company  
 of Honolulu  
 Duty Free Shoppers, Ltd.  
 Estate of James Campbell  
 GracePacific Corporation  
 Halekulani Hotel  
 Hawaii Tribune Herald, Ltd.  
 Hawaiian Electric Co., Inc.  
 Hawaiian Host Chocolates

Hawaiian Telephone Company  
 Hawaiian Trust Company, Ltd.  
 Hemmeter Investment Company  
 KCCN Radio  
 Kahala Hilton Hotel  
 Kong Lung Co.  
 National Securities &  
 Investment  
 Oceanic Cablevision  
 Oceanic Properties, Inc.  
 Pacific Resources, Inc.  
 Phillips, Brandt, Reddick &  
 Associates  
 R. M. Towill Corporation  
 Royal Hawaiian Hotel  
 Royal Viking Line  
 Shidler & Company  
 The Shamrock Group  
 The Westin Mauna Kea  
 Touche Ross & Company  
 Victoria Ward, Ltd.

## PATRON

Chevron U.S.A., Inc.  
 Chinatown Marketplace  
 1st Nationwide Savings  
 Hawaiian Cement  
 Madden Corporation  
 Min Plastics & Supply, Inc.  
 Theo. H. Davies & Co., Ltd.

## PARTICIPATING

Bishop Trust Co., Ltd.  
 Cardinal Mailing Services, Ltd.  
 Central Pacific Bank  
 Coldwell Banker  
 Consolidated Amusement Co.,  
 Ltd.  
 Coopers & Lybrand  
 E. F. Hutton & Company, Inc.  
 First Interstate Bank of Hawaii  
 Grant Thornton  
 Grosvenor International  
 (Hawaii), Ltd.  
 Group 70  
 HPM Building Supply  
 Hawaii National Bank  
 Helber, Hastert & Kimura  
 Honolulu Advertiser, Inc.  
 Honsador, Inc.  
 Island Insurance Company, Ltd.  
 Mauna Lani Resort, Inc.  
 Media Five, Ltd.  
 Midpac Lumber Company, Ltd.  
 Mouse Builders, Inc.  
 Oahu Market Associates, Inc.  
 Pacific Construction Co., Ltd.  
 Peat Marwick Main & Co.  
 Rush Moore Craven Kim &  
 Stricklin  
 Territorial Savings & Loan  
 Title Guaranty Escrow Services

## CONTRIBUTING

Adams Design, Inc.  
 Aloha Unlimited, Inc.  
 American Land Company

Arthur Andersen & Co.  
Bank of Honolulu  
Blackfield Hawaii Corporation  
Bosh, Ltd.  
Building Industry Assn. of Hi.  
Captain Cook Inv. Corp.  
Chaney Brooks & Company  
Chinatown Merchants Assn.  
Classic Cars, Ltd.  
Cole Venture Management  
Commercial Shelving, Inc.  
Crossroads Press, Inc.  
DMAC, Inc.  
Del Monte Corporation  
Dole Hawaii Division  
E. K. Fernandez Shows  
Eagle Distributors  
Edward Enterprises, Inc.  
Ernst & Whinney  
Fine Wine Imports  
First Federal Savings & Loan  
First Insurance Co. of Hawaii  
Franklin Gray & Associates,  
Architects  
Fred N. Sutter & Associates, Inc.  
GECC Financial Corporation  
Graham Murata Russell  
Grubb & Ellis Co.  
Hawaiian Crane & Rigging, Ltd.  
Hawaiian Life Insurance Co.,  
Ltd.  
Higgins Rattan, Inc.  
Hilton Hawaiian Village  
Honolulu Club  
Honolulu Painting Co., Ltd.  
Honolulu Publishing Co., Ltd.  
Hotel Hana-Maui  
IBM  
Images International of Hi., Inc.  
International Savings & Loan  
J. C. Penney Company, Inc.  
Jardine Emett & Chandler  
Hawaii  
KGMB TV  
Kaiser Development Company  
King & Neel, Inc.  
Lions Club of Honolulu  
Longs Drug Stores, Inc.  
MPS - Hawaii  
Maggie Parkes & Assoc., Inc.  
Magoon Estate/Magoon  
Brothers, Ltd.  
Milici Valenti Smith & Gabriel  
Nelson Hawaiian, Ltd.  
Okumura Takushi Funaki &  
Wee  
Pacific Insurance Co., Ltd.  
Party Fun Inc. dba Aloha  
Rentals  
Pomare, Ltd.  
Professional Image, Inc.  
Riecke Sunnland Kono  
Architects  
Robert M. Kaya Builders, Inc.  
Royal Contracting Co., Ltd.  
Royal Hawaiian Properties, Inc.  
Sears, Roebuck & Co.  
Servco Pacific, Inc.  
Starr Siegle McCombs, Inc.  
Stryker Weiner Associates, Inc.

TRB/Hawaii Ltd.  
The Food Group  
The Travelers  
UNOCAL  
Universal Consumer Products,  
Inc.  
Waikiki Shopping Plaza  
Wailea Steak House  
Walter Y. Arakaki, General  
Contractor  
Wimberly, Whisenand, Allison,  
Tong  
Wo Fat Restaurant  
Worrall-McCarter, Inc.  
Young Laundry & Dry Cleaning

## SUPPORTNG

Ameron HC&D  
Baral Corporation  
Brass Light Gallery  
Fee/McClaran Associates  
First American Title Company  
of Hawaii  
Gallery, Ltd.  
George W. Ashford, Jr. &  
Associates  
First American Title Company  
of Hawaii  
Gallery, Ltd.  
George W. Ashford, Jr. & Assoc.  
Hawkins/Miller Studio Inc.  
Jiffy Set, Inc.  
Lynn Tilton, Ltd.  
M/C Ventures, Inc.  
Oahu Market Trust  
Olde American Country Home  
Sun Fashions of Hawaii, Ltd.  
Waipio Valley Shuttle

## TRUSTS, FOUNDATIONS, ORGANIZATIONS, ASSOCIATIONS

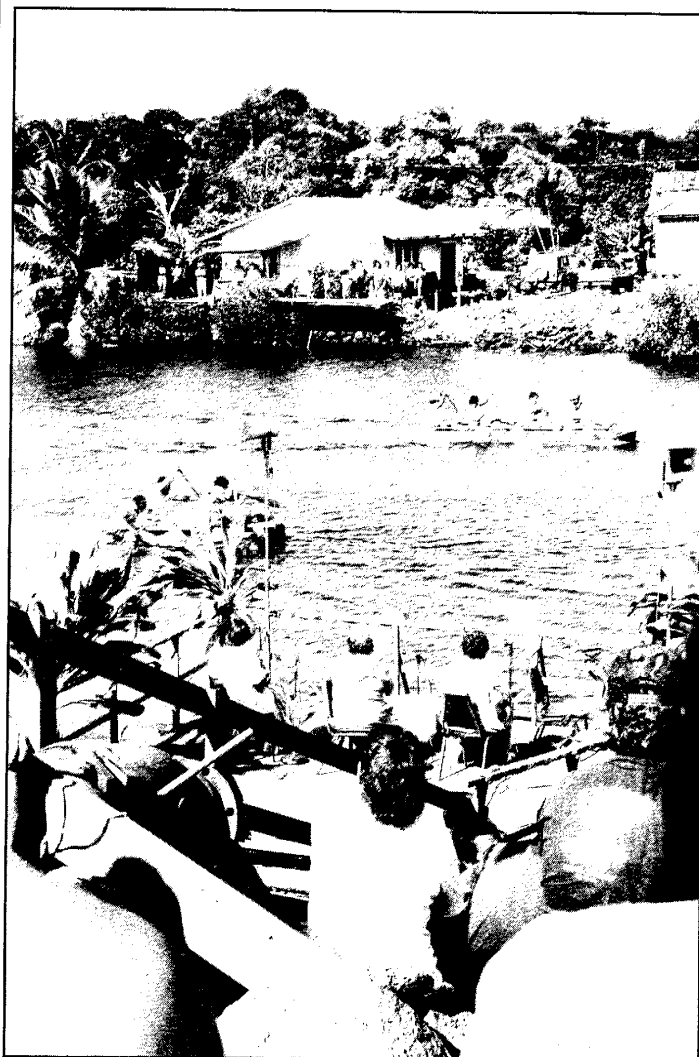
Arizona Memorial Museum  
Atherton Family Foundation  
Brigham Young University -  
Hawaii Campus  
County of Maui  
Downtown Business Council  
East Oahu Library District  
Fourteenth Coast Guard District  
Frear Eleemosynary Trust  
W. A. Gerbode Foundation  
Hawaii Army Museum  
Hawaii Hotel Industry Fdtn.  
Hawaii Pacific College  
Hawaii Redevelopment Agency  
Hawaii State Library  
Historic Sites Section, DLNR  
Ho'opulapula Haraguchi Rice  
Mill  
Jefferson Elementary School  
Junior League of Honolulu  
Kamehameha Schools  
Kona Historical Society  
Leilehua High School  
Maui Historical Society

National Endowment for the  
Arts  
National Society of Colonial  
Dames  
Oahu Development Conference  
Office of Hawaiian Affairs  
Oral History Project, UH  
Pacific Fleet Submarine  
Memorial Assn.  
Pacific Tropical Botanical  
Garden  
The Research Corporation of  
the University of Hawaii  
State of Hawaii  
Waianae Coast Culture and  
Arts Society

## IN-KIND CONTRIBUTIONS

Aikahi World Travel Inc.  
Cal Nary  
Chambers & Chambers Wine  
Distributors  
Chang's Electrical Service  
Coco Palms Resort

Compadres Mexican Bar & Grill  
Don Tatum's Lanai Things  
E Noa Tours  
French Gourmet Inc.  
Hawaii Antique Dealers Assn.  
Hawaiian Regent Hotel  
John Dominis Restaurant  
John Guild Inn  
Juniper Arts, Ltd.  
Lee Truitt & Associates  
Lion Coffee  
Manoa Gallery  
Martin & Associates Advertising  
Inc.  
Mary Catherine's Bakery  
Mauna Kea Beach Resort  
Mokulua Consultants Inc.  
Patti Cook and Assoc.  
Professional Security Services  
Inc.  
Safeway Stores Inc.  
Sunset Party Services  
Tad & Pat Ltd.  
Waimea Falls Park/Sea Life  
Park



*Annual RIVER RAFT RUN festivities to support Hilo Main Street*

## Historic Hawai'i Foundation

119 Merchant St., Room 402  
Honolulu, HI 96813

### EXECUTIVE COMMITTEE

Phyllis G. Fox  
President

Robert H. Gerell  
Chairman of the Board

C. Dudley Pratt, Jr.  
First Vice Chairman

William S. Richardson  
Second Vice Chairman

Arthur C. Tokin  
Secretary

Charles J. Pietsch III  
Treasurer

William Gleason  
Douglas Philpotts  
Members at Large

### BOARD OF TRUSTEES

Peter D. Baldwin  
Jackie Blackshear  
June Borland  
Gladys A. Brandt  
Wm. Frank Brandt  
Kenneth F. Brown  
Keola Childs  
Charles Dunlap  
Bonnie Eyre  
Robert M. Fujimoto  
Larry E. Helber  
Stanley Hong  
Phyllis Kunimura  
Ronald M. Letterman  
Michael Liu  
Warren Luke  
Wing Tek Lum  
A. Maurice Myers  
William W. Paty, Jr.  
James C. Reynolds  
William Stricklin  
Teney Takahashi  
Gerald Takano  
Jane B. Tatibouet  
Donald Yamada

PAST CHAIRMAN OF THE BOARD  
Nathaniel R. Potter, Jr.

TRUSTEE EMERITUS  
Mrs. Allyn Cole, Jr.

Historic Hawai'i Foundation  
Post Office Box 1658  
Honolulu, Hawai'i 96806

Address Correction Requested

Non-Profit  
Organization  
U.S. Postage  
**PAID**  
Honolulu, HI  
Permit No. 1301

## HISTORIC HAWAII' I ANNUAL MEETING

PLEASE JOIN US AS WE  
CELEBRATE A YEAR OF ACHIEVEMENT

5 to 7 p.m.  
TUESDAY, APRIL 19, 1988  
WASHINGTON PLACE  
HONOLULU, HAWAII' I

5 p.m.  
Report to the Membership  
Election of President  
and New Trustees  
1988 Preservation Awards

6 p.m.  
A Celebration  
Cocktails, Pupus  
Hawaiian Music

Aloha Attire RSVP By April 15, 1988  
537-9564

### HISTORIC HAWAII' I STAFF

**Development Director**  
Marge S. Kam

**Special Events**  
Carmella Hernandez

**Main Street Coordinator**  
Marni Herkes

**Managing Editor**  
Lisa Peterson

**Main Street Assistant**  
Rojean Evans

**Office Manager**  
Raynette Nakamura

**Secretary**  
Joan Saplan

*On the cover: With the support of a \$32,000 grant from First American Title, five architectural students and a historian worked throughout the summer to record the history and facades of 12 historic buildings in the Merchant Square historic district area under the federal Historic American Building Survey. The detailed drawings and histories will now be filed with the Library of Congress.*