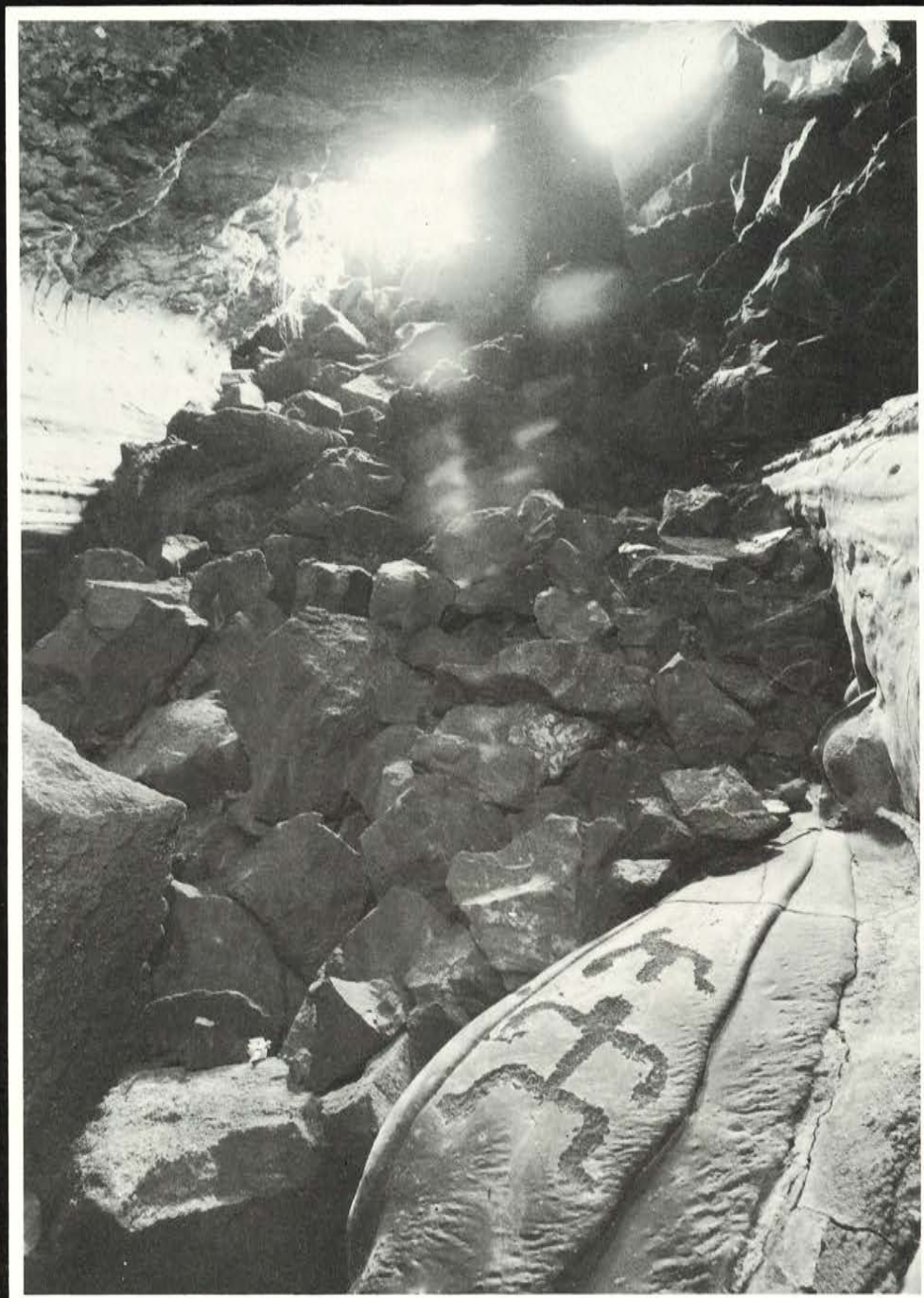


# HISTORIC HAWAII



1986 ANNUAL REPORT



# From the President

**Preservation Comes  
of Age — It's 21  
1986 - 1987**

Coming of age is an exciting milestone and, for the historic preservation movement, it includes a celebration of significant accomplishments.

The National Historic Preservation Act, federal legislation passed by Congress in 1966, formalized our nation's historic preservation program, broadening our national policy on historic preservation.

The law established the National Register of Historic Places and the National Advisory Council. It also involved state governments in a matching grants program to assist in planning, for identifying, acquiring and preserving/enhancing historic properties.

In 1976 the first federal tax incentives for preservation were passed and, although altered several times over the years, they are still in place for nationally registered commercial buildings.

In Hawai'i, Act 254 passed in 1967 established our state "Comprehensive Historic Preservation Program." It also established our State Register of Historic Places which presently has about 250 properties listed. Since that time, the State Historic Preservation Office has grown to include a staff of 8 people who administer the program.

In addition, the State Historic Preservation Plan is included as one of our 12 state functional plans which guide the overall planning efforts for our State.

Historic Districts have been established at the county level and Commissions appointed as stewards to guide development and change within these special areas.

During this past year, Kaua'i established a county preservation program under the Certified Local Government program; Hawai'i and Maui will do so shortly.

Yes, the historic preservation movement has come of age and with that passing comes a matured responsibility. We must build upon our achievements, learn from our failures, refine and improve our programs, be alert to and take advantage of every opportunity to continue to expand and strengthen our preservation efforts for the future of our counties, our state and the nation.

We welcome the challenge.

*Phyllis G. Fox*  
Phyllis G. Fox  
President

**A**chievements do not follow one another in an orderly fashion. Instead, they appear to founder, recover, accelerate, get side-tracked, pick up momentum, reinforce each other. Some fail, others become realities.

Years are spent in planning to achieve what appears to be overnight successes. Years of attention to detail, follow-up with dogged persistence, elation and despair.

This coming-of-age for historic preservation certainly follows that pattern of years of work followed by blessed achievements.

We are seeing greater concern voiced in the community, greater support for preserving our heritage. This support is manifested through working relationships with government where staff use the experience they have gained in working with older buildings as a basis for making judgments about granting variances to building codes and recognize grandfathered rights for historic buildings. Increased care is being given to including preservation concerns into government planning processes.

We see greater recognition for the social and economic value of historic preservation reflected in the success of our Main Street programs. The resources which our volunteers are so generously providing to communities have reached even greater levels of expertise.

We have achieved a new level of awareness through the historic preservation course at the University of Hawai'i Manoa which was over subscribed during the registration process.

Visiting experts have been invited to speak at a series of conferences at the University proving an even greater tie between our academic and business communities.

Our new magazine format is well accepted and provides a cleaner, longer-lived format for carrying our message to members and friends.

Our working relations have expanded as we undertook a grant from the Office of Hawaiian Affairs and one from the National Endowment for the Arts.

We are seeing increasing awareness of the need to protect and preserve our natural and built environment through recognition and respect for our achievements.

It has been a long time in coming. We welcome and celebrate the realization of years of work — preservation is truly coming of age.



Robert H. Gerell  
Chairman of the Board



## From the Chairman

### Landmark Achievements in 1986

# Main Street Works.

*Hilo, West Kaua'i, Hanapepe, and  
Wailuku — Exciting changes are Taking Place  
in these Main Street Communities*



Michael Faye, Chairman

West Kaua'i had a dynamic year. Promotional activities highlighted Captain Cook's first stop in the Hawaiian islands at Waimea and created awareness of its early missionary and plantation roots. Sponsored in 1985 by the West Kaua'i business and Professional Association, West Kaua'i is Hawai'i's first Main Street town.

Accomplishments of the program include:

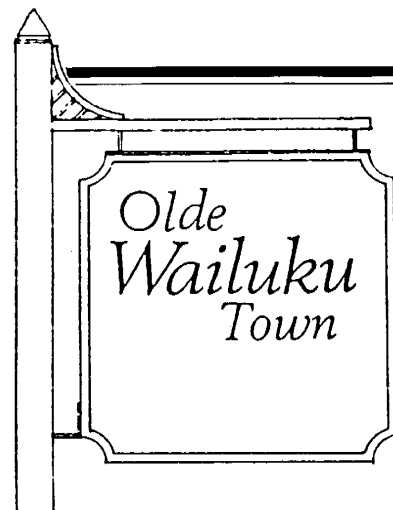
- National Main Street Resource Team visit.
- Informative tabloid published monthly and distributed to 9,500 households with historical walking tour (over 400 visitors took the tour in December alone!)
- Promotional events: Captain Cook Festival; Candlelight Carolling Tour of mission homes and churches; A photo

contest capturing important local scenes.

- Beautified and created interpretative brochure for historic Fort Elizabeth.

"We are buoyed by the enthusiasm islanders are showing toward Main Street. The program holds great promise for the state of Hawai'i."  
... William Paty, Jr., Chairman,  
Main Street.

William Paty, Jr.



Frank Abrams, Chairman

Launched by the Wailuku Community Association, the Wailuku Main Street program is well on its way. An ad hoc committee was named to organize and raise funds. The progress is encouraging.

Accomplishments of the program include:

- 'Iao Theater saved for a cultural and social center for downtown Wailuku.
- Gateway signs installed.
- Streetscape plans underway.
- Willie Nelson concert and street party celebrated downtown.

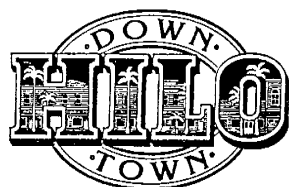
## MAIN STREET HANAPEPE

Owen Moe, Chairman

Hanapepe may be Hawai'i's newest Main Street town, but exciting and visible changes are already in place. Admitted to the program in August 1986, the town is sponsored by the Hanapepe Professional and Business Association.

Accomplishments of the program include:

- Received \$35,000 County grant for design assistance.
- Won County of Kaua'i Beautification Award.
- Gala kickoff event attended by over 1000, featuring Hawaiian music, dance and ethnic food.
- Established design program.
- Created logo.
- Published four newsletters.



Kirk Soares, Chairman

Main Street is transforming downtown Hilo. The 24-block central business district covered by Main Street offers an exciting example of revitalization potential. Sponsored in 1985 by the Hilo Downtown Improvement Association, the success of the Main Street program in this town is remarkable.

Accomplishments of the program include:

- Festive promotional activities: Menehune Christmas, 6 week Back to School Sale.
- Video presentation illustrating rehabilitation progress.
- Design projects completed on 14 buildings.



*Hula Halau celebrates Hanapepe's Main Street Kick-off.*

Phyllis G. Fox.

- Downtown Hilo logo incorporated in promotions and advertising.
- Expanded block captain communication network keeping merchants informed.

**"The energy of the Main Street towns' participants — their self-starting initiative, energy, caring and hard work — is Historic Hawai'i's great success." . . . Charles Pietsch, III, Secretary, Board of Trustees**

There is a contagious enthusiasm in these communities. Residents are committed, involved, and together are achieving goals. Their list of accomplishments is proof positive that the Main Street program is the driving force behind the new vitality in these towns — creating new hope for the residents of today and tomorrow.

## MAIN STREET COMMITTEE

Ed Aotani AIA  
Vance Borland  
Gladys Brandt  
The Honorable Dante Carpenter  
Elroy Chun  
Patti Cook  
Richard Coons  
Robert Gerell  
Milton Goto  
Chris Hart  
Warren H. Haruki  
Roland Herberg  
Leonard Hoshijo  
Patti Jenkins  
Lowell Kalapa  
Keith Kent  
John Kelley  
Richard King  
Alton Kuioka  
The Honorable Tony Kunimura  
Spencer Leineweber  
Scott Leithead  
Charles T.C. Lum  
The Honorable Wayne Metcalf  
Ray Nagel  
Harry Olson  
Susumu Ono  
William Paty  
David Penhallow  
Dexter T. Suzuki  
Teney Takahashi  
Murray Towill  
Robert L. Vieira  
Robert Watts



# SHARING OUR KNOWLEDGE WITH THE PACIFIC BASIN

## *The Graduate Certificate Program In Historic Preservation*

The preservation movement has been explosive in Hawai'i. It has surged and matured, subsequently demanding greater expertise and professionalism. Historic Hawai'i recognized the need for a graduate certificate or degree program which would provide necessary training and saw that this need extended to the entire Pacific Basin and Asia, including the west coast of the United States. Through the establishment of such a program, Historic Hawai'i saw a tremendous opportunity to serve a vast area in which preservation questions and problems are being addressed.

With the assistance and encouragement of Historic Hawai'i Foundation, the University of Hawai'i launched the Graduate Certificate Program in Historic Preservation in 1986.

The Certificate Program reflects the growth of preservation beyond the jurisdiction of the historian or curator. It gives students and professionals in the fields of architecture, anthropology, environmental conservation, law, urban and regional planning, and business, among others, training in a field which is fast becoming integral to their professions. To assure that the program will benefit students in each of these areas, a Curriculum Committee was formed whose members represent leadership in these and other fields.

The program is off to a dynamic start. During the spring of 1987 a basic course covering the history and

philosophy of preservation is offered by William Murtagh, PhD, Director of the Program. Positive response to the course offering was immediate. This success will be continued in the fall by Visiting Professor Robert Geibner of the University of Arizona, former trustee to the National Trust for Historic Preservation and current advisor to the Trust.

Creating an ongoing Graduate Level Certificate Program in historic preservation can establish Hawai'i as the central training point for the entire Pacific Basin. As we continue to work to create a permanent position or chair for Historic Preservation at the University of Hawai'i, we ask that Historic Hawai'i members support us in this endeavor through their letters to the University and the Legislature requesting funding for the continuation of this important program.

*William Murtagh, PhD.*



## **WILLIAM MURTAGH, PHD. FIRST DIRECTOR OF U.H. GRADUATE PROGRAM**

We are fortunate to have the services of William Murtagh, PhD. to establish the Graduate Certificate Program in Historic Preservation. Dr. Murtagh's distinguished career includes first Keeper of the National Register of Historic Places, Vice-President of the National Trust for Historic Preservation, Director of Historic Preservation at Columbia University. Since 1984, he has served as a private consultant, lecturer and on the executive committee of the United States ICOMOS (International Council on Monuments and Statues). Dr. Murtagh was the national president of the Victorian Society in America and a Ben Franklin Fellow of the Royal Society of Arts in London.

## **CURRICULUM PLANNING GROUP**

Ruben Alcantara, PhD., Associate Professor,  
American Studies Department  
David Callies, Professor of Law  
Tom Dinell, Professor of Urban and  
Regional Planning  
Evarts C. Fox, Jr., PhD., Instructor,  
American Studies Department  
Judith Hughes, PhD., Associate Professor  
of American Studies  
James McCutcheon, PhD., Chairman,  
American Studies Department  
Luciano Minerbi, PhD., Professor of Urban  
and Regional Planning  
Franklin Odo, PhD., Professor of Ethnic  
Studies  
Matthew Spriggs, PhD., Assistant Professor  
Phyllis G. Fox, President, Historic Hawai'i  
Foundation  
Donald Hibbard, PhD., Director, Historic  
Spencer Leineweber, AIA, Partner,  
Spencer-Mason Partnership  
Barnes Riznick, PhD., Director, Grove  
Farm Plantation Museum and Adjunct  
Professor of American Studies  
Jane Silverman, Consultant to the State  
Supreme Court  
Charles R. Sutton, AIA, Sutton Associates

# HERITAGE COUNCIL NETWORK

## Linking Hawai'i's Preservation Concerns

Individuals and organizations striving for historic and cultural preservation and conservation in Hawai'i are numerous. With a communication link between these groups, their efforts are strengthened. The Heritage Council Network provides this link, sharing information, resources and support with member organizations for issues vital to Hawai'i.

### O'AHU:

- Monthly meetings were held to identify mutual goals; discuss issues and develop strategy.
- Workshops were offered on working with the Legislature; cemeteries and burial practices in Hawai'i.

### HAWAII:

- Organizational meetings held in Hilo, Waimea, Kona.
- Workshops on the Hawai'i County Cultural Resource Management Plan; National Register Nomination.
- Process and update of the State's survey of Historic/Cultural Resources.
- Archaeological sites recording certificate program initiated for community groups with the State Historic Preservation Office.



Kaui Goring

*Working together to make blood-red tapa cloth dye from kukui bark. Maui Historical Society, a Heritage Council member organization.*

### MAUI:

- Organizational meetings and workshops on Maui County Cultural Resource Management Plan; Oral History; National Register Nomination Process; Update of the State's survey of Maui's Historic/Cultural Resources.

### KAUAI:

- Workshop on preserving Kauai's Historic Resources, Update on Current Community Efforts.

At year's end, the following organizations, representing a network of over 20,000 memberships were participating and supporting the Heritage Network:

Kauai Museum  
Friends of the Natatorium  
Waimea-Kawaihae Community Association  
Waianae Coast Culture & Arts Society  
Planners, Architects, and Landscape Architects of Maui

Bernice P. Bishop Museum  
The O'ahu Outdoor Circle  
Hawaiian Historical Society  
American Planning Association, Hawai'i Chapter  
Friends of Kamoia Point, Inc.  
Lyman House Memorial Museum  
Hana Cultural Center  
Hawaiian Anthropological Association  
The Nature Conservancy  
Friends of Meyer Sugar Mill,  
Moloka'i Museum & Cultural Center  
Kona Conservation Group  
Pa'u O Hi'iaka  
Maui Historical Society  
North Shore Neighborhood Board #27 (Haleiwa)  
Waialua Community Association  
The Cemetery Research Project  
Society for Hawaiian Archaeology  
Kawai Nui Heritage Foundation  
Hawai'i Theatre Center  
Hawai'i's Thousand Friends  
Kalapana Community Organization  
Kanaio Community Association  
Historic Hawai'i Foundation



# MEMBERS AT WORK . . .

## COMMITTEES FOR PRESERVATION

### RESOURCE TEAM

We shared our professional expertise with the community this year through the time and talents of our Resource Team. This team, composed of Brian Shuckburgh, ASID, Spencer Leineweber, AIA, and Thomas Whitaker, ASLA, was assembled to evaluate the scope of work and proposed budget for the restoration of Bishop Hall at Bishop Museum. Their plans, which recommended that the Hall be restored to its complete historical integrity, were accepted in full. A big plus for the Museum and Historic Hawai'i.

*Vance Borland, ASID, Director, Evaluation Team*

### PRESERVATION AWARD COMMITTEE

Historic Hawai'i annually recognizes significant achievement in historic preservation through the Preservation Honor Awards. The awards committee, composed of professionals invited from diverse fields, meets annually to consider nominations for projects, individuals, or organizations reflecting the broad spectrum of culture which preservation incorporates. Through the efforts of this committee, exemplary achievements in preservation are presented as an example for others to follow. Many thanks to Sheridan Ing, Dudley Pratt, Roselle Bailey, John Hara, Phillip Spalding III, Rhoda Hackler, Jackie Blackshear, and John Derby for the ideas, energy and enthusiasm with which they served.

*Francis S. Haines, FAIA, Awards Committee Chairman*



*Larry Helber and Keola Childs planning long term strategy.*

### PUBLICATION COMMITTEE

Historic Hawai'i News combined a new magazine format with increased coverage of preservation news and events to create a stronger messenger to our members and friends. The response was overwhelmingly positive. The Publications Committee met twice in 1986 to decide our editorial focus and agree on topics for articles. Accuracy in Hawaiian history and language was ascertained by historian Agnes Conrad and Hawaiian language advisor Robert Lokomai-ka'iokalani Snakenberg. Through this Committee we continue to strive for excellence in preservation news.

*Howard Wiig, Chairman*

### STRATEGIC PLANNING

We raised our sights from the present to the future as we established a long range, strategic planning process for Historic Hawai'i this year. The meetings were spirited, positive, imaginative. Special thanks to Keola Childs who served as facilitator and to all the Trustees who helped look at future planning for Open Space, Main Street, Advocacy, Support, Education, Communication, Identity and Resources. Planning today will turn dreams into realities tomorrow.

*Kenneth F. Brown, FAIA Chairman*

### NOMINATION COMMITTEE

We tried to reflect our organization's growth and expansion in our selection of nominees for the Board. We recruited people with energy, ideas and track records who are seriously concerned about the preservation of our cultural heritage. Our job was made easier by the enthusiasm of committee members Stuart Ho, Jeffrey Watanabe, Charles Pietsch III, Nat Potter. My thanks to them all for their assistance.

*Wm. Frank Brandt, Chairman*

### PRESERVATION PARADE

"Living With History: Historic Homes of Nu'uano" celebrated lush Nu'uano Valley during the Ninth Annual Preservation Parade. The educational tour, co-sponsored by American Institute of Architects, American Society of Interior Designers, American Society of Landscape Architects and the Building Industry of Hawai'i, offered picnic seminars as well as opened homes to the 1,200 visitors who flocked to the event. Many thanks go to all who helped with this successful Parade, especially Vance Borland, ASID, and Allison Holland, ASID, past chairmen, for their invaluable assistance.

*Jean Wall, ASID, Chairman*



## 1987 OBJECTIVES

### OPEN SPACE

Compile a directory of Open Space resources.

### SUPPORT

Maintain our current membership of 2,000.

Recruit 500 additional members.

### COMMUNICATION

Promote a Design Faire in downtown Honolulu — including Preservation Parade.

Develop TV PSA's.

Continue our existing strategic planning process.

Select and present 1987 Preservation Awards.

Publish and distribute Historic Hawai'i magazine.

### EDUCATION

Develop a design education kit and market to county government, schools and mainland networks.

Inventory existing education programs in the State.

U.H. Curriculum established with William Murtagh, PhD, as Director.

Adapt Historic Hawai'i slide show for schools.

Publish a historic preservation law hand book and hold workshops to distribute it.

Develop a petroglyph education program.

### ADMINISTRATION

Develop a staff of office volunteers.

### PHYSICAL IDENTITY

Identify potential buildings to house Historic Hawai'i.

### RESOURCES

Develop Showhouse as a major funding and volunteer source.

Evaluate our fundraising potential (increased assets/buildings/endowment).

### MAIN STREET

Develop four active, vital, successful Main Street towns.

Establish a process to admit four Main Street towns in 1988.

Prepare a Main Street resource directory.

### ADVOCACY

Solidify existing Heritage Council membership, expand to Kaua'i County, and include Moloka'i and Lana'i.

Conduct two workshops in each county.

Hold an annual conference in October.

Work with developers.

Review State/County plans.

Hold training for Lay Commissioners.

Coordinate technical assistance by Resource Teams on specific projects.

# 1987 PRESERVATION AWARDS

**H**istoric Hawai'i Foundation annually recognizes outstanding achievement in preservation through its Preservation Honor Awards. These awards and commendations are Hawai'i's highest accolade for individuals, organizations, or projects which preserve, restore, rehabilitate or interpret Hawai'i's precious archaeological, maritime or architectural culture.

The 1987 awards are clear evidence that preservation has come of age. A wide spectrum of our culture is represented this year

including archaeological sites, architecture, and an ancient Hawaiian art and sport. The organizations and individuals who received these honors illustrate the recognition that preservation has achieved. Private cultural interests are no longer the sole supporters of preservation; commercial developers, government agencies, community organizations and many others have joined the ranks.

*One of 19 holua, or lava slides on the Big Island cleared and documented by award-winning Holua Project, Inc.*



## Holua Project, Inc.

In this "Year of the Hawaiian," it is appropriate that a Preservation Honor Award is presented to the Holua Project, Inc. Through the members' tireless efforts, the sites of the ancient Hawaiian sport of holua, or land sledding, were stabilized, restored and documented. They have worked to maintain these unique sites in the face of the development that threatens them. Over 13 slides have been photographed and 19 have been documented on the island of Hawai'i alone. Original research concerning the sport has been gathered in hopes that the care, restoration, and preservation of these holua in Hawai'i will become a concern statewide.

## 'Ahuimanu Taro Complex

A Preservation Commendation was awarded to 'Ahuimanu Joint Centure and Archaeological Consultants of Hawai'i for the construction of an interpretative trail through the 'Ahuimanu Taro Complex. The construction and funding of this trail reflects a cooperative effort between private development interests and local archaeologists. Together the developer and archaeologist preserved this treasure of yesterday and provided for its future.

## Palama Settlement Youth Building

The Palama Settlement Youth Building rehabilitation project received a Preservation Commendation for saving the building, moving it onto new foundations and rehabilitating it as faithfully as possible to its New England-style architecture, while maintaining its recreational and educational function.



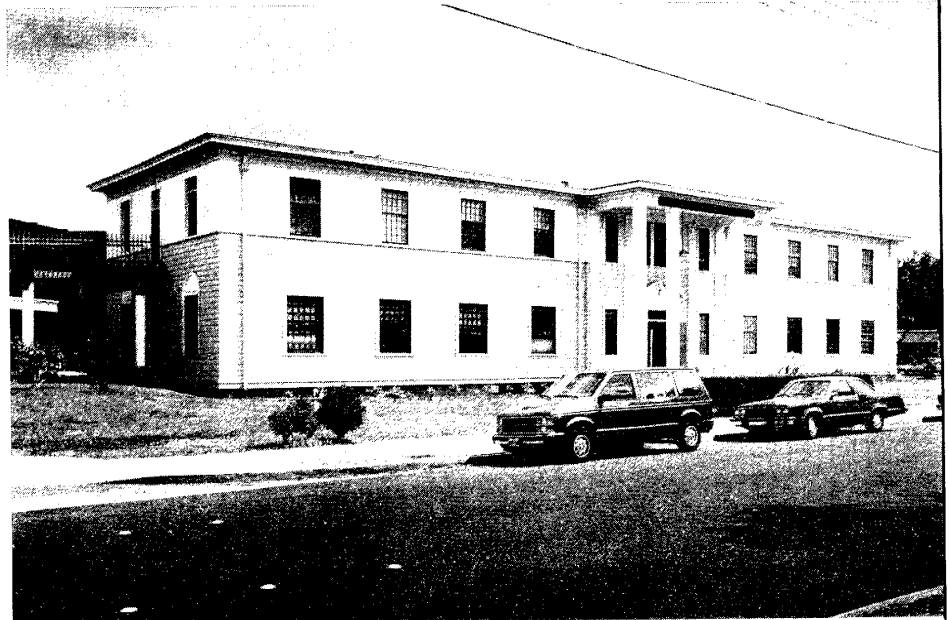
## Aaron Levine

"If we do not preserve and respect our past, there will be no quality in the future," stated Aaron Levine, recipient of a Preservation Honor Certificate. For twenty-five years, he guided the O'ahu Development Conference with sensitivity towards preservation. Preservationists remember Mr. Levine, the first Chairman of the 'Iolani Palace Restoration Committee and a founding member of Historic Hawai'i Foundation, as a source of tremendous support and advice which extended far beyond duty.



*Joseph Kennedy*

*Augie Salbosa*



## Westin Mauna Kea Tour Tape Program

"Our Hawai'i Home: Our People and Heritage," a tape series documenting the historical, geological, mythological, linguistic, and cartological heritage of the Big Island interprets the rich cultural heritage of the island of Hawai'i. Commissioned by the Westin Mauna Kea hotel, the tapes are intended for independent sightseeing by visitors and employees via a driving tour of the island. The project has received a Preservation Commendation for its efforts to encourage widespread appreciation of Hawai'i's past.



## Bishop Museum Photography Department

The staff and volunteers of the Bishop Museum Photography Department have consistently exhibited generosity towards individuals and organizations in saving, protecting and organizing historic photographic images. Under the direction of Betty Lou Kam, the department has provided education and guidance concerning policy, scope and history for historic collections, and has made itself known as a group willing to help at every level.



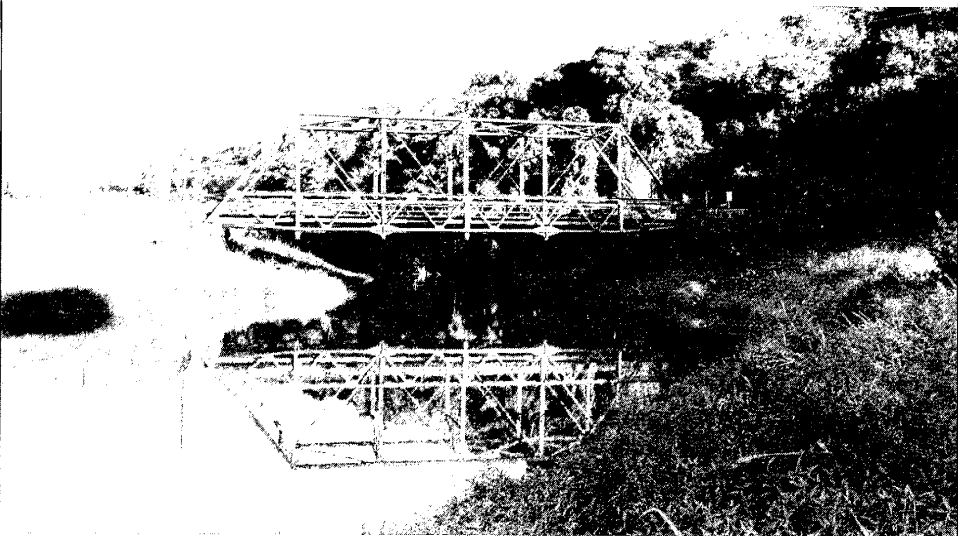
*Eric Davis*

## Pahua Heiau

The Hawai'i Kai Garden Circle received a Commendation for its work of clearing and restoring the Pahua Heiau in Hawai'i Kai. Through the volunteer efforts of this community organization, thick vegetation was cleared from the site allowing state archaeologists to conduct excavations. Special recognition goes to June and Brayton Norton whose competent leadership made this project a reality. Future plans include establishment of the area as a historic monument and state park.

## Hanalei Bridge Mediation

The Department of Transportation, O'ahu Neighborhood Justice Center and North Shore Belt Road Advisory Committee received a Preservation Commendation for the successful mediation process used to settle a twelve-year dispute concerning the restoration of the Hanalei Bridge. With O'ahu Neighborhood Justice Center as mediator, this success represents the first positive resolution of a dispute via mediation between a Hawai'i state government agency and the public. Restoration process on the historic Hanalei Bridge is scheduled to begin in 1988.





# 1986 FINANCIAL STATEMENT

## STATEMENTS OF ASSETS AND LIABILITIES

(Arising from Cash Transactions)  
December 31, 1986

	1986			1985		
	General Operating Funds			General Operating Funds		
	Unrestricted	Restricted	Total	Unrestricted	Restricted	Total
<b>ASSETS</b>						
Cash						
Savings and Checking .....	\$ 65,088	\$ 49,711	\$114,799	\$ 56,768	\$ 39,536	\$ 96,304
Corporate Securities .....	—	—	—	2,416	—	2,416
Fixed Assets .....	26,014	—	26,014	16,403	—	16,403
Less Accumulated Depreciation .....	9,581	—	9,581	5,710	—	5,710
	<u>16,433</u>	<u>—</u>	<u>16,433</u>	<u>10,693</u>	<u>—</u>	<u>10,693</u>
	<u>\$ 81,521</u>	<u>\$ 49,711</u>	<u>\$131,232</u>	<u>\$ 69,877</u>	<u>\$ 39,536</u>	<u>\$109,413</u>
<b>LIABILITIES AND FUND BALANCE</b>						
Fund Balance	<u>\$ 81,521</u>	<u>\$ 49,711</u>	<u>\$131,232</u>	<u>\$ 69,877</u>	<u>\$ 39,536</u>	<u>\$109,413</u>

## STATEMENTS OF REVENUES AND EXPENDITURES

	1986			1985		
	General Operating Funds			General Operating Funds		
	Unrestricted	Restricted	Total	Unrestricted	Restricted	Total
<b>Revenues</b>						
Fundraising	\$ 32,093	—	\$ 32,093	\$ 29,644	—	\$ 29,644
Membership	158,925	—	158,925	106,797	—	106,797
Contributions	3,185	—	3,185	8,237	—	8,237
Newspaper Ads	2,167	—	2,167	5,992	—	5,992
Interest	7,764	—	7,764	8,250	—	8,250
Preservation Projects	—	117,261	117,261	—	110,485	110,485
Public Education	10,652	—	10,652	13,660	—	13,660
Administrative Costs	36,000	—	36,000	—	—	—
	<u>250,786</u>	<u>117,261</u>	<u>368,047</u>	<u>172,670</u>	<u>110,485</u>	<u>283,155</u>
<b>Expenditures</b>						
Salaries and Wages	86,555	—	86,555	58,171	—	58,171
Cost of Fundraising Activities	12,510	—	12,510	16,334	—	16,334
Depreciation	3,871	—	3,871	2,719	—	2,719
Insurance	9,865	—	9,865	9,006	—	9,006
Membership	8,142	—	8,142	9,822	—	9,822
Office Expenses	9,227	—	9,227	4,915	—	4,915
Postage	5,058	—	5,058	4,227	—	4,227
Preservation Projects	—	107,086	107,086	—	80,352	80,352
Professional	4,213	—	4,213	3,094	—	3,094
Public Education	74,347	—	74,347	47,662	—	47,662
Rent	11,726	—	11,726	7,394	—	7,394
Repairs and Maintenance	1,258	—	1,258	1,136	—	1,136
Taxes	6,240	—	6,240	5,391	—	5,391
Telephone	6,037	—	6,037	3,867	—	3,867
Travel	93	—	93	281	—	281
	<u>239,142</u>	<u>107,086</u>	<u>346,228</u>	<u>174,019</u>	<u>80,352</u>	<u>254,371</u>
<b>EXCESS OF REVENUES OVER EXPENDITURES</b>						
<b>(EXCESS OF EXPENDITURES OVER REVENUES)</b>						
	\$ 11,644	\$ 10,175	\$ 21,215	\$ (1,349)	\$ 30,133	\$ 28,784

## STATEMENT OF CHANGES IN FUND BALANCE

	1986			1985		
	General Operating Funds			General Operating Funds		
	Unrestricted	Restricted	Total	Unrestricted	Restricted	Total
Fund balance at beginning of the year .....	\$ 69,877	\$ 39,536	\$109,413	\$ 71,226	\$ 9,403	\$ 80,629
Excess of revenues over expenditures						
(Excess of expenditures over revenues) .....	11,644	10,175	21,819	(1,349)	30,133	28,784
Fund Balance at end of year .....	<u>\$ 81,521</u>	<u>\$ 49,711</u>	<u>\$131,232</u>	<u>\$ 69,877</u>	<u>\$ 39,536</u>	<u>\$109,413</u>

# FRIENDS OF HISTORIC HAWAII

## HERITAGE ASSOCIATES

"As Chairman of the Heritage Associates, I am privileged to lead a group of very special Historic Hawai'i supporters who express their commitment to preservation by contributing \$1,000 and more each year. I want to extend my thanks and those of Historic Hawai'i to the Heritage Associates for their continuing support which helps preserve Hawai'i's special heritage."

C. Dudley Pratt, Jr.  
Chairman, Heritage Associates

Mr. and Mrs. Albert R. Abramson  
Mrs. Barbara Cox Anthony  
Mr. and Mrs. Roy S. Blackshear  
Mr. and Mrs. Wm. Mendel Borthwick, Jr.  
Mrs. Anthony B. Boynton  
Mr. Kenneth F. Brown  
Mr. and Mrs. Courtney Burton  
Mr. and Mrs. Donn W. Carlsmith  
Mrs. Mary Lou J. Carter  
Dr. Ann B. Catts  
Dr. John F. Chalmers  
Mrs. Dorothea Girton Chandler  
Mr. and Mrs. Sungdai Choi  
Mr. and Mrs. Henry B. Clark, Jr.  
Capt. and Mrs. Allyn Cole, Jr.  
Mr. and Mrs. Bill Cook  
Mr. and Mrs. Samuel A. Cooke  
Mr. Richard A. Coons  
Mr. and Mrs. Herbert C. Cornuelle  
Miss Alicia C. Davies  
Mrs. Alan S. Davis  
Mr. and Mrs. Herbert S. Dimmitt  
Mr. Peter G. Drewliner  
Mrs. T. N. Fairbanks, Jr.  
Dr. and Mrs. John Henry Felix  
Dr. and Mrs. Evarts C. Fox, Jr.  
Mr. and Mrs. Peter John Fulgenzi  
Mr. and Mrs. Robert H. Gerell  
Mr. William F. Gleason  
Dr. and Mrs. Norman Goldstein  
Mr. and Mrs. John T. Goss  
Mrs. Louise Guard  
Mrs. Ruth K. Hanner  
Mr. and Mrs. Joseph W. Hartley, Jr.

Mr. Arthur C. Hyde  
Mrs. Cecily F. Johnston  
Miss Abigail Kekaulike Kawanakoa  
Miss Poomai Kawanakoa  
Dr. James T. Lambeth  
Mrs. Spencer Leineweber  
Dr. Gerrit R. Ludwig  
Mr. Robert J. Marsh  
Dr. and Mrs. Tom M. McMillan  
Mrs. Neva S. McMullan  
Mr. and Mrs. R. D. Moore  
Mr. and Mrs. Nathaniel R. Potter, Jr.  
Mr. C. Dudley Pratt, Jr.  
Mr. Rick Ralston  
Mr. and Mrs. Henry F. Rice  
Mr. William S. Richardson  
Mrs. Joan Rohlfing  
Mr. and Mrs. Raymond L. Salley  
Mr. C. Frederick Schutte  
Mr. and Mrs. Edward W. Scripps II  
Mrs. Maryanna G. Shaw  
Mr. James C. Shingle  
Mr. Brian J. Shuckburgh, ASID  
Mr. and Mrs. Allen M. Stack  
Mrs. John Stevenson  
Mr. and Mrs. Andre Tatibouet  
Mr. Edward Tilton, Sr.  
Mr. and Mrs. Thurston Twigg-Smith  
Mr. and Mrs. Herman V. von Holt  
Mr. Robert T. Watts  
Mr. and Mrs. Michael Weight  
Dr. Drake W. Will  
Mr. Kim Wissing  
Mrs. Cenric N. Wodehouse  
Mr. Donald K. Yamada

*Other individuals contributing to Historic Hawai'i include:*

## PARTICIPATING

Mrs. Gladys A. Brandt  
Anonymous  
Mr. and Mrs. Warren Haight  
Mr. and Mrs. Benjamin L. Marx, Jr.  
Mrs. Mary Philpotts  
Mr. Charles C. Spalding

## CONTRIBUTING

Mr. Michael Lewis Ainslie  
Mr. and Mrs. Henry A. Alexander  
Mr. and Mrs. A. S. Atherton  
Mr. Kenneth P. Barrow, Esq.  
Mr. and Mrs. John D. Bellinger  
Mr. and Mrs. James A. Bier  
Mr. and Mrs. David Boak  
Mrs. W. Herbert Bretzlaff  
Mr. and Mrs. J. Russell Cades  
Mr. Keola Childs  
Mr. Michael S. Chu  
Col. and Mrs. John R. Clifton

Mr. Richard Clifton  
Mr. and Mrs. John H. Connors  
Mr. and Mrs. Joseph P. Cooke, Jr.  
Mrs. Bayard H. Dillingham  
Mr. and Mrs. Edward J. Doty  
Mr. and Mrs. David L. Dressel  
Mr. and Mrs. Charles F. DuBois  
Mr. and Mrs. Robert Dyson  
Mr. and Mrs. Dean A. Eyre, Jr.  
Mr. and Mrs. Gerald W. Fisher, Jr.  
Mr. Andrew D. Friedlander  
Mr. and Mrs. Robert M. Fujimoto  
Ms. June V. Gibson  
Mr. and Mrs. Richard H. Gray  
Mrs. Grace Guslander  
Hawaii Pacific College  
Mr. and Mrs. Fred Hedemann  
Mr. Cecil Heftel  
Mr. Larry E. Helber  
Mr. Charles H. Holt  
Mr. and Mrs. Robert W. Hufford  
Mr. and Mrs. Charles W. Hulick  
Mr. and Mrs. Alan W. Hyman  
Mrs. Esther H. Jantzen  
Mr. and Mrs. Alan C. Kay  
Mr. Thomas D. King, Jr.  
Mr. and Mrs. F. W. Klebahn  
Mr. J. Clifton Koterba  
Mrs. Howard Lang  
Mrs. Richard C. Latham  
Mrs. Doris M. Leach  
Mr. George R. Lowson  
Mr. and Mrs. Warren K.K. Luke  
Mrs. Roberta MacNaughton  
Mrs. Dolores Martin  
Mr. George Mason  
Mrs. William W. McCarthy  
Mrs. Kathy Merrill  
Dr. and Mrs. George H. Mills  
Mrs. George H. Moody  
Mrs. Virginia Moore  
Mrs. Patricia Morriss  
Mrs. William E. Mussett  
Mr. Philip Norris  
Mr. and Mrs. George L. Nottingham  
Mr. and Mrs. Edward A. O'Neill  
Mr. William W. Paty, Jr.  
Miss Jacqueline Perry  
Miss Diane J. Plotts  
Mr. David W. Rae  
Mr. and Mrs. James B. Ramstead  
Mr. Larry Rodriguez  
Mr. Paul H. Rosendahl  
Miss Mary A. Roulette  
Mr. and Mrs. Nathan Sacks  
Mr. and Mrs. Louis T. Self  
Mr. John P. Spierling  
Mr. George W. Sumner, Jr.  
Mrs. Annalie Tatibouet  
Mrs. Charlotte Temple  
Mr. and Mrs. Myron Thompson  
Mrs. Joseph Z. Todd  
Mr. Arthur C. Tokin  
Mrs. Joanne V. Trotter  
Mr. and Mrs. Robert Vanek

Mr. Jeffrey N. Watanabe  
Mr. David Watumull  
Mrs. Juliet Rice Wichman  
Mr. and Mrs. Myron Wick, Jr.  
Mr. and Mrs. Leighton J. Wilkie  
Dr. and Mrs. William B. Wilson, Jr.  
Mr. K. Tim Yee

## SUPPORTING

Mrs. James J. Ackerman  
Mr. and Mrs. Keith E. Adamson  
Mr. and Mrs. Davis E. Adler  
Mrs. Jeanne Read Alden  
Mr. and Mrs. R. Alex Anderson  
Mr. Edward R. Aotani  
Mrs. Flora C. Atherton  
Mrs. D. E. Bahrenburg  
Ms. Virginia L. Baird  
Mr. Peter D. Baldwin  
Mr. Alan C. Beall  
Mrs. Florence H. Beard  
Mr. and Mrs. Irwin S. Bickson  
Ms. Cynthia G. Blackwell  
Mr. and Mrs. Ben H. Bond, Jr.  
Miss Lindy Boyes  
Mr. and Mrs. Fred Brossy, Jr.  
Mr. and Mrs. Alan Lowrey Brown  
Mrs. Zadoc W. Brown  
Mr. H. William Burgess  
Mrs. Elsie McG. Burke  
Mr. and Mrs. Reynolds G. Burkland  
Mrs. Charles H. Burnett, Jr.  
Mr. Colin C. Cameron  
Mrs. J. Kenneth Cameron  
Mr. Larry Capellas  
Mrs. A. Hartwell Carter  
Mr. and Mrs. E. L. Carter  
Mr. and Mrs. Daniel H. Case  
Mr. and Mrs. John C. Cavanagh  
Sen. Anthony K.U. Chang  
Mr. and Mrs. Robert S. Ching  
Mr. and Mrs. Mel Choy  
Ms. Mazeppa K. Costa  
Mr. and Mrs. Richard H. Cox  
Ms. Irene W. Croft, Jr.  
Mr. Randolph Crossley  
Mrs. Joan G. Damon  
Mr. and Mrs. Wilfred D. Darling  
Dr. and Mrs. Harry K. Davis  
Mr. James R. Dunlop  
Mr. and Mrs. Lloyd M. Dunn  
Mr. and Mrs. Harold C. Eichelberger  
Mr. and Mrs. Wayne E. Ellis  
Mr. and Mrs. Gary R. Endres  
Dr. and Mrs. Evan C. Evans III  
Mrs. Gerald W. Fisher, Sr.  
Mr. Robert M. Fox, AIA  
Mrs. Jean Moores Frank  
Mr. and Mrs. L. Richard Fried, Jr.  
Gallery, Ltd.  
Mr. and Mrs. James F. Gary  
Mr. and Mrs. Martin Gendel  
Ms. Marion Glover

Mr. and Mrs. Donald W.Y. Goo  
 Mr. and Mrs. Holbrook Goodale  
 Mr. and Mrs. Robert S. Gordon  
 Mr. Robert Bruce Graham, Jr.  
 Mr. Alvin Grancell  
 Mr. and Mrs. William A. Grant  
 Mr. James S. Gray  
 Mr. and Mrs. Sherwood R.H. Greenwell  
 Mr. Richard W. Gushman II  
 Mrs. Douglas E. Guy  
 Mr. Michael E. Haig  
 Dr. Joel Hamilton  
 Mr. Willard T. Haraguchi  
 Mr. and Mrs. Arthur L. Harris  
 Mr. and Mrs. Donald G. Hasenyager  
 Mrs. Nancy Hedemann  
 Mr. Lawrence S. Heim  
 Mr. Will J. Henderson  
 Mr. and Mrs. Melvin M. Hirose  
 Ms. Pegge Hopper  
 Mrs. James Howard  
 Adm. and Mrs. John J. Hyland  
 Mr. Donald C. Ingram, Jr.  
 Ms. Patricia D. Jacques  
 Mrs. Marjorie Irwin James  
 Mr. William B. Jamieson  
 Ms. Deborah Jones  
 Mr. and Mrs. J. Robert Judd  
 Ms. Marge S. Kam  
 Mr. and Mrs. Ronald Kats  
 Dr. W. Philip Kau  
 Mr. George H. Kekoolani, Jr.  
 Dr. and Mrs. Robert D. Kemble  
 Ms. Linda Kephart  
 Mr. and Mrs. Albert Kerry  
 Miss Sandra T. Kimura  
 Mrs. Garfield King  
 Dr. and Mrs. L. J. Kirkham  
 Ms. Helen Rebecca Larson  
 Miss Teresa Law  
 Mrs. Ralph G. Leavitt  
 Mrs. Victoria E. Lee  
 Mr. and Mrs. J. Gordon Lent  
 Mr. and Mrs. Richard M. Libbey  
 Mr. and Mrs. Carl Lindquist  
 Mr. and Mrs. William H. Livingston  
 Mr. and Mrs. Gene Long  
 Mr. and Mrs. Robert S. Lowrey  
 Mr. and Mrs. Martin P. Mangan  
 Mr. George D. Manning  
 Mrs. Sarah Ann Martin  
 Mr. David E. Matthews  
 Mr. Rix Maurer, III  
 Mrs. Ann Welch McDonald  
 Mr. Mike McKenna  
 Dr. William F. McKenzie  
 Mr. Ken Melrose  
 Mrs. Valerie L. Mendes  
 Mrs. Leon E. Mermod  
 Mr. and Mrs. Harry Meyer  
 Mrs. Francis S. Morgan  
 Mr. and Mrs. James F. Morgan, Jr.  
 Mr. and Mrs. Stewart Morris  
 Capt. and Mrs. Richard J. Nesbitt  
 Mr. and Mrs. V. W. Newbold  
 Mrs. Lenore Nims O'Brien  
 Pacific Fleet Sub. Memorial Assn.  
 Ms. Penny Pagliaro



*Kilohana developer Kirk Smith hosts Dorothy McMillen, Ruth Birnie and Helen Cole on an HHF outing.*

Mr. and Mrs. Corey Y.S. Park  
 Ms. Nancy Lyman Peacock  
 Dr. James Penoff  
 Mr. and Mrs. David T. Pietsch, Sr.  
 Mr. and Mrs. Andrew Poepoe  
 Miss Julia M. Putnam  
 Mr. and Mrs. William F. Quinn  
 Dr. and Mrs. G. Manning Richards  
 Mr. Hans Riecke, AIA  
 Dr. and Mrs. Robert G. Rigler  
 Mr. and Mrs. Carlos E. Rivas  
 Mr. Russell S. Robinson  
 Mr. and Mrs. H.E. Robisch  
 Mr. and Mrs. Richard H. Rodby  
 Mr. and Mrs. Robert H. Rotz  
 Mr. Peter E. Russell  
 Mr. and Mrs. Michael Ryan  
 Mrs. Wallace G. Sanford  
 Mrs. Helene W. Scholl  
 Mr. and Mrs. John Anthony Serrao  
 Miss Phyllis Shea  
 Miss Miriam E. Sinclair  
 Mr. and Mrs. Peter S. Smith  
 Dr. and Mrs. Arthur Sprague  
 Mr. and Mrs. David K. Sproat  
 Dr. and Mrs. Edward C. Sterling  
 Mr. Edwin B. Stevens  
 Mr. and Mrs. E. Grant Story  
 Mrs. Barbara L. Suzui  
 Mr. and Mrs. James Turner  
 Mr. and Mrs. Wendell W. Wade  
 Waianae Coast Culture & Arts Society  
 Mr. and Mrs. G. Herbert Walther  
 Mr. and Mrs. Douglas Weers  
 Mrs. Thomas K. White  
 Mr. and Mrs. S.D. Whiting  
 Mr. Harry A. Whitten  
 Mr. and Mrs. Gaylord H. Wilcox  
 Mrs. Virginia Wirtz  
 Mr. and Mrs. Robert C. Wo  
 Mr. Hei Wai Wong

#### FAMILY

Dr. and Mrs. Milton Ackerman  
 Mr. and Mrs. Walter Africa  
 Mr. and Mrs. Robert Akinaka  
 Mr. Roy K. Alameida  
 Capt. and Mrs. Bruce Althoff

Mr. and Mrs. Andrew Andersen, Jr.  
 Mr. and Mrs. Edward P. Anderson  
 Mr. and Mrs. James M. Bailey  
 Mr. and Mrs. W.J. Baldwin  
 Mr. and Mrs. Waldron Barrere  
 Mr. and Mrs. Clinton B. Basler  
 RAdm. and Mrs. E. H. Batcheller  
 Mr. and Mrs. George H. Batt  
 Mr. and Mrs. Waldemar F. Bechert  
 Brig. Gen. and Mrs. Clare E. Beck  
 Mr. and Mrs. Ronald K. Beers  
 Mr. and Mrs. Ben B. Beeson  
 Mr. and Mrs. Joseph Bender  
 Mr. and Mrs. Harlan F. Benner  
 Mrs. Joy N. Black  
 Mr. and Mrs. M.A. Blackburn  
 Dr. Kekuni Blaisdell  
 Mr. and Mrs. Roy Boehm  
 Mr. and Mrs. Richard H. Booth  
 Mr. and Mrs. C.B. Bostwick  
 Mr. Waldo Bowman  
 Mr. and Mrs. Svath E. Boyum  
 Mr. and Mrs. William E. Brown  
 Mr. and Mrs. Henry C. Burgess  
 Mr. and Mrs. Gordon Burton  
 Mr. and Mrs. Oswald A. Bushnell  
 Mr. and Mrs. Vance Cannon  
 Mr. and Mrs. William L. Carpenter  
 Shirley and Virginia Cartwright  
 Mr. and Mrs. Paul R. Cassiday  
 Mr. and Mrs. Richard J. Chalmers  
 Mr. and Mrs. E. R. Champion  
 Mr. and Mrs. Wayne S. Chinen  
 Mr. and Mrs. Philip H. Ching  
 Dr. and Mrs. William T. Cleghorn  
 Mrs. Hal Connable  
 Mr. and Mrs. Terry Conner  
 Mr. James Conti & Ms. Noel Sutherland  
 RAdm. and Mrs. Ralph E. Cook  
 Capt. and Mrs. James L. Cook, Jr.  
 Mr. and Mrs. William S. Coonley  
 Mr. and Mrs. Warner Cosgrove, Jr.  
 Mr. and Mrs. Doak C. Cox  
 Mr. and Mrs. George W. Craft  
 Ms. Helen A. Craig  
 Mr. and Mrs. Anthony B. Craven  
 Mr. and Mrs. C. Wilbur Craw  
 Mr. and Mrs. R. Dougal Crowe

Mr. and Mrs. Thomas M. Culbertson  
 Mr. Philip H. Cummings  
 Mr. and Mrs. David W. Curtis  
 Mr. and Mrs. E. H. Curtis  
 Mr. and Mrs. Theodore Dabagh  
 Mr. and Mrs. S.B. Davis  
 Mr. and Mrs. Donald Dawson  
 Mr. and Mrs. J. Arthur deBoer  
 Mr. and Mrs. Duncan F. Dempster  
 Mr. and Mrs. Robert Dinman  
 Mr. and Mrs. John P. Dinmore  
 Capt. and Mrs. Wales S. Dixon  
 Mr. and Mrs. Wayne E. Duncan  
 Medford and Masu Dyer  
 Mr. and Mrs. Michael Dyer  
 Mr. Bill Edwards  
 Mr. and Mrs. William F. Ehrman  
 Mr. and Mrs. R. D. Emory  
 Mr. and Mrs. Henry Eng  
 Mr. and Mrs. Isami Enomoto  
 Mr. and Mrs. David Evans  
 Joan and Joseph Farrell  
 Mr. and Mrs. Michael A. Faye  
 Dr. and Mrs. David Fergusson  
 Mr. and Mrs. Marvin Fialco  
 Dr. and Mrs. Merle Fischlowitz  
 Joel and Vasanti Fithian  
 RAdm. and Mrs. Francis E. Fleck  
 Mr. and Mrs. James E. Fleming  
 Capt. and Mrs. Frank L. Fullaway  
 Mr. and Mrs. Frederick H. Furer  
 Mr. and Mrs. Earl G. Galloway  
 Mr. and Mrs. Ben Gamundoy  
 Col. and Mrs. Ron Garten  
 Mrs. Charles C. Gates  
 Mr. and Mrs. Frank Geiger  
 Mr. and Mrs. Theodore Gibson  
 Ms. Cynthia Gillette-Wenner  
 Mr. and Mrs. J. Gillmar  
 Mr. and Mrs. Joseph A. Gilman III  
 Mr. and Mrs. Richard A. Girton, Jr.  
 Mr. and Mrs. Gregory C. Goetz  
 Dr. and Mrs. Lawrence Gordon  
 Mr. and Mrs. Robert B. Graham, Sr.  
 Mr. and Mrs. Ray H. Greenfield  
 Mr. and Mrs. Norman Greenwell  
 Mr. and Mrs. Raymond Gross  
 Mr. and Mrs. Werner Gubelin  
 Mr. and Mrs. Warren Gunderson  
 LCDR. and Mrs. E. H. Gunther  
 Mr. and Mrs. Windsor G. Hackler  
 Mr. and Mrs. Michael A. Han  
 Mr. and Mrs. Andy R. Harada  
 Mr. and Mrs. Edward A. Harger  
 Mr. and Mrs. Mark H. Hastert  
 Dr. and Mrs. J.C. Hathaway  
 Mr. and Mrs. Erik Hazelhoff  
 Mr. and Mrs. James F. Helmer  
 Mr. and Mrs. Richard Henderson  
 Mr. and Mrs. Robert N. Herkes  
 Mr. and Mrs. Arthur G. Hernandez  
 Mr. and Mrs. Raymond B. Herrick  
 Mr. Robert L. Hind, Jr.  
 Mr. and Mrs. William Hodgins



Mr. and Mrs. William W.H. Hoffstot, Jr.  
 Mr. and Mrs. John Richard Hofmann, Jr.  
 Mr. and Mrs. Chico Holland  
 Mr. and Mrs. John Hoogs  
 Mr. and Mrs. Glenn Horiuchi  
 Mr. and Mrs. Arthur G. Horner, Jr.  
 Mr. and Mrs. R.A. Horst  
 Dr. and Mrs. Milton M. Howell  
 Mr. and Mrs. Thomas P. Huber  
 Mr. and Mrs. Don R. Huddleston  
 Dr. and Mrs. Joseph F. Hughes  
 Mr. and Mrs. Robert H. Hughes  
 Mr. and Mrs. Gregory B. Hunt  
 Mr. and Mrs. Michael Hurwitz  
 Mr. and Mrs. Frank W. Hustace, Jr.  
 Mr. and Mrs. Dennis Isenburg  
 Ms. Connie Itagaki  
 Mr. and Mrs. Bruce Jackson  
 Mr. and Mrs. Harry Jefferson  
 Mr. and Mrs. Donald D. Johnson  
 Mr. and Mrs. Herbert R. Jordan  
 Dr. and Mrs. Charles S. Judd, Jr.  
 Junior League of Honolulu  
 Mr. and Mrs. Lloyd C. Kaapana  
 Mr. and Mrs. William G. Kast  
 Mr. and Mrs. Edward K. Kawanakaoa  
 Mr. and Mrs. Phillip S. Keat  
 Mr. and Mrs. Paul Kekuewa  
 Ms. Mary W. Kimball  
 Mr. and Mrs. Valdemar Knudsen  
 Mr. and Mrs. Fred W. Koch  
 Mr. and Mrs. Nolan J. Kramer  
 Mayor and Mrs. Tony Kunimura  
 Mr. and Mrs. Frank Kunz  
 Mr. and Mrs. Terry Kupfer  
 Mr. and Mrs. H. Peter L'Orange  
 Mr. and Mrs. Thomas K. Lalakea  
 Mr. and Mrs. Evan C. Lambert  
 Mr. and Mrs. Robert Lamson  
 Mr. and Mrs. Tambi Larsen  
 Mr. and Mrs. Douglas J. LeGrande  
 Mr. and Mrs. Bay Stewart Leber  
 Dr. and Mrs. Bernard Lee  
 Dr. and Mrs. Frank Lee  
 Mr. and Mrs. Gordon Lee  
 Mr. and Mrs. Peter A. Lee  
 Lt. Col. and Mrs. M. L. Lemon, Jr.  
 Mrs. Priscilla H. Leong  
 Mark and Rebecca Lively  
 Mr. and Mrs. Frank F. Loney  
 Dr. and Mrs. John J. Lowrey  
 Dr. and Mrs. Kwong Lum  
 Mr. and Mrs. Fred M. Lunt  
 Mrs. Orlando H. Lyman  
 Mr. and Mrs. Bruce S. MacBride  
 Capt. Colin J. MacKenzie  
 Mr. and Mrs. Richard Malmgren  
 Mr. and Mrs. George Mann  
 RAdm. and Mrs. G. Patrick March  
 Mr. and Mrs. Stephen Marvin  
 Dr. and Mrs. Fujio Matsuda  
 Mr. and Mrs. James T. McClellan  
 Mr. and Mrs. Stewart McCombs  
 Mr. and Mrs. William J. McCord  
 Dr. and Mrs. James McCutcheon  
 Mr. and Mrs. Eric McD. Moir

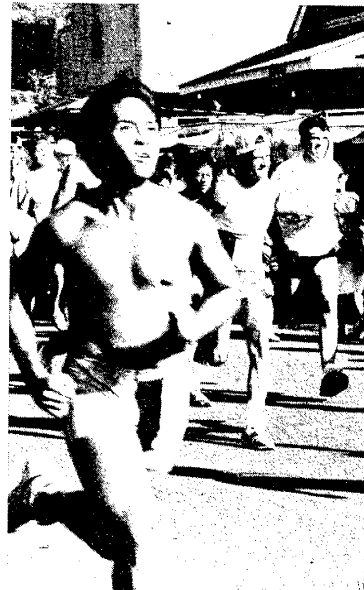
Mr. and Mrs. George S. McDeldowney  
 Mr. and Mrs. Bruce McEwan  
 Mr. and Mrs. Jack G. McGuire  
 Dr. and Mrs. G.H. McMorland  
 Col. and Mrs. S. K. McMurdo  
 Dr. and Mrs. Philip I. McNamee  
 Mr. and Mrs. Gordon K.T. Mew  
 Mr. and Mrs. Richard J. Meyer  
 Dean and Mrs. Jerrold M. Michael  
 Mr. and Mrs. Robert R. Midkiff  
 Mr. and Mrs. Arthur Dale Miller  
 Mrs. Mildred Minvielle  
 Mr. and Mrs. Wilson C. Moore, Jr.  
 Mr. and Mrs. H. Fred Mosher  
 Mr. and Mrs. Cornelius Mulder  
 RAdm. and Mrs. William T. Nelson  
 Mr. and Mrs. John F. Nielsen  
 Dr. and Mrs. Victor J. Niiranen  
 Dr. and Mrs. Robert A. Nordyke  
 Mr. and Mrs. Katashi Nose  
 Dr. and Mrs. E. J. O'Shaughnessy  
 Mr. and Mrs. Emil Offer  
 Mr. and Mrs. Edwin T. Okada  
 Mr. and Mrs. R. Bryan Owen  
 Mr. and Mrs. Nicholas J. Palmer  
 Mr. and Mrs. Rudolph E. Papst  
 Mr. and Mrs. Irvine H. Paris  
 Mr. and Mrs. William J. Paris, Jr.  
 Mr. and Mrs. Edward J. Parnell  
 Mr. and Mrs. James R. Pavele  
 Mr. and Mrs. Charles Pedesky  
 Mr. and Mrs. James C. Pell  
 Mr. and Mrs. Gavin J. Pemberton  
 Judge and Mrs. Martin Pence  
 Susan and Peter Percy  
 Mr. and Mrs. Thomas D. Perkins  
 RAdm. and Mrs. H.S. Persons  
 Mr. and Mrs. Ernest Peterson  
 Mr. and Mrs. Richard E. Peterson  
 Mr. and Mrs. Charles J. Pietsch  
 Mr. and Mrs. Hebden Porteus

*Who says you have to race on your own two feet?*



Mr. and Mrs. Jonathan M. Potter  
 Mr. and Mrs. Robert H. Prahler  
 Mr. and Mrs. David Puder  
 Mr. and Mrs. Robert Purvis  
 Mr. and Mrs. George Radford  
 Capt. Samuel M. Randall  
 Mr. and Mrs. Peter Rathbun  
 Mr. and Mrs. Tim Reed  
 Mr. and Mrs. Edward F. Robinson  
 Mr. and Mrs. T.J. Roseberry  
 Mr. and Mrs. Iain Munro Ross  
 Mason and Beverly Rothenborg  
 Mr. and Mrs. Jim Samuelson  
 Col. and Mrs. Dale S. Seeds  
 Lt. Gen. and Mrs. G. P. Seneff  
 Mr. and Mrs. Wilmot L. S. Seto  
 Mr. and Mrs. Lloyd Sexton  
 Dr. Harold M. Sexton  
 Mr. and Mrs. Barry Shain  
 Drs. Ben and A. Jess Shenson  
 Mr. and Mrs. Seymour W. Shingle  
 Mr. and Mrs. Clarence R. Short  
 Dr. and Mrs. Albert Simone  
 Mr. and Mrs. Jack L. Simpson  
 Mr. and Mrs. G.C. Slain  
 Mr. and Mrs. R.H. Sloggett, Sr.  
 Jane and Jerry Smith  
 Mr. and Mrs. N.K. Smith  
 LCDR. and Mrs. William R.H. Smith  
 Mr. and Mrs. Russell L. Smith, Jr.  
 Mr. and Mrs. Sidney E. Snyder, Jr.  
 Mr. and Mrs. Carl Sorem  
 Dr. and Mrs. John Spangler  
 Mr. and Mrs. Alexander Spoehr  
 Mr. and Mrs. Ronald E. Sprink  
 Dr. and Mrs. George W. Starbuck  
 Mr. and Mrs. Campbell W. Stevenson  
 Mr. and Mrs. Kenneth A. Stotler  
 Mr. and Mrs. Arthur D. Stubenberg  
 Mr. and Mrs. Stanley A. Styan  
 Mr. and Mrs. Charles R. Sutton  
 Mr. and Mrs. James Takano  
 Mr. and Mrs. Eddie K. Taniguchi

*Main Street Hanapepe kick-off.*



Mrs. Philip F. Thayer  
 Mr. and Mrs. Carl L. Thoene, Jr.  
 Mr. and Mrs. Lowell Thomas, Jr.  
 Mr. James Thompson  
 Capt. and Mrs. Lewis G. Timberlake  
 Mr. and Mrs. Allen Ting III  
 Dr. and Mrs. P. Quentin Tomich  
 Col. and Mrs. R. H. Towell  
 Mr. and Mrs. Gordon Tribble  
 Mr. and Mrs. Albert F. Turner  
 Mr. and Mrs. Thomas Unger  
 Ms. Suzanne L. Varady  
 Capt. and Mrs. Dimitri J. Vellis  
 Mr. and Mrs. Carl C. Vetter  
 Mr. and Mrs. Roy A. Vitousek, Jr.  
 Mr. and Mrs. Albert J. Vivas, Jr.  
 Dr. and Mrs. Garton E. Wall  
 Mr. and Mrs. K. Watanabe  
 Mr. and Mrs. Gulab Watumull  
 Mr. and Mrs. Marshall B. Wheeler  
 Mr. and Mrs. Fred R. White  
 Mr. and Mrs. Robert E. White, Jr.  
 Mr. and Mrs. Stratford L. Whiting  
 Capt. and Mrs. D.B. Wikeen  
 Dr. and Mrs. John E. Wilcox  
 Mr. and Mrs. Allen C. Wilcox, Jr.  
 Dr. and Mrs. Lewis Williamson  
 Mr. and Mrs. Gary Winterbottom  
 Mr. and Mrs. James T. Witten  
 Mr. and Mrs. James T. Woolaway  
 Dr. and Mrs. Dale Wortham  
 Mr. and Mrs. Daniel C. Wright  
 Mr. and Mrs. Harlow D. Wright  
 Mr. and Mrs. Norman J. Wright  
 Mr. and Mrs. A. James Wriston, Jr.  
 Mr. and Mrs. Paul T. Yardley  
 Mr. and Mrs. John C. York  
 Dr. and Mrs. Martin H. Zais

## INDIVIDUAL

Mr. Don Aanavi  
 Miss Christie T. Adams  
 Mr. Norman C. Adams  
 Mr. Charles W. Adcock  
 Mrs. Ann Aikta  
 Capt. Robert H. Albert  
 Mrs. Claude C. Albritton, Jr.  
 Mr. Robert Alder  
 Mrs. Elizabeth G. Alexander  
 Mrs. Barbara Allin  
 Mr. John S. Allin  
 Dr. Lawrence Allman  
 Mrs. Marvin J. Anderson  
 Mrs. Thomas Anderson  
 Ms. Dorine C. Andrews  
 Mr. John Andrews  
 Mr. Lowell Angell  
 Ms. Eileen M. Angliss  
 Mr. Donald H. Angus  
 Ms. Judy Applebaum  
 Miss Ellie Arden  
 Mrs. June M. Ardolino  
 Arizona Memorial Museum  
 Mrs. Inez Ashdown  
 Mr. Frank Atherton  
 Ms. Janet L. Atkins  
 Mrs. Charles W. Atkinson  
 Mr. Alden I. Avery

Mrs. Patricia A. Avery  
 Ms. Nancy Backes  
 Mr. Kent A. Baker  
 Mr. John A. Baker, Jr.  
 Mrs. Edward H.K. Baldwin  
 Mr. John C. Ball  
 Mrs. Watson Ballentyne  
 Miss Nancy Bannick  
 Mrs. James L. Banning  
 Baral Corporation  
 Mr. Lowell B. Barnhart, ASID  
 Mrs. Gail Bartholomew  
 Edyth J. Bassett  
 Miss Carol A. Beadle  
 Mr. Donald Beaton  
 Mr. Douglas Beaton  
 Mr. James Beaton  
 Mr. Bruce Bebe

Mrs. Robert L. Campbell  
 Dr. Richard M. Candee  
 Mrs. Hilda D. Cannon  
 Mr. David Carey III  
 Ms. Mitsue Cook Carlson  
 Mrs. Lorraine T. Carson  
 Ms. Darlene Carver  
 Mrs. William B. Case  
 Mrs. Kathleen L. Casil  
 Ms. Momi Cazimero  
 Dr. Helen Chapin  
 Mr. Murray Chapman  
 Dr. Carlene Char  
 Mr. Jim Charlton  
 Ms. Betty Charro  
 Mr. Archie Chatterley  
 Mrs. Louise D. Cheeley  
 Mr. Dennis Y.K. Chen

Mrs. Carolyn E. Dixon  
 Mr. Kevin Dooley  
 Ms. Dorothy B. Douthit  
 Mrs. Pamela Duarte  
 Mrs. Hazel K. Dukelow  
 Ms. Nancy L. Dunn  
 Mrs. Elbridge A. Durant  
 Ms. Janet Durkin  
 Mr. Peter Dutcher  
 Mrs. C. Harry Dyer  
 Ms. Coila Eade  
 Mrs. Karen L. Easterling  
 Mrs. Marjorie P. Edel  
 Mrs. Patricia H. Edmondson  
 Miss Sally H. Edwards  
 Mr. J. Chris Edwardsen  
 Dr. David T. Eith  
 Mr. David P. Eldredge  
 Mr. John C. Elliott  
 Ms. Patricia G. Engelhard  
 Mrs. Mary T. English  
 Miss Dorothy M. Evans  
 Dr. B.M. Eveleth  
 Mr. Tom Fanning, AIA  
 Miss Constance Farina  
 Ms. Welcome S. Fawcett  
 Mrs. Barbara C. Faye  
 Ms. Margaret L. Faye  
 Dr. Leabert R. Fernandez  
 Mrs. Elizabeth A. Finefrock  
 Mr. John E. Finney  
 Mr. Ralph Fisher  
 Mr. Kenneth Fiske  
 Mrs. Muriel M. Flanders  
 Mr. Albert R. Fleming  
 Mrs. Petty Floyd  
 Mrs. Virginia Fontaine  
 Mrs. G. B. Formans  
 Mr. Jeffrey Fox  
 Ms. Mary A. Fox  
 Mr. David Franzen  
 Mrs. Barbara Freeman  
 Mrs. Evelyn M. Frey  
 Mrs. William Friedl  
 Mrs. Claudine Fujii  
 Mrs. Ethel K. Fujioka  
 Miss Carol Fukunaga  
 Mr. Alan Furukawa  
 Ms. Gay Gammie  
 Mr. Walter F. Garcia  
 Mr. John L. Garibaldi  
 Mrs. Margaret B. Garland  
 Mrs. Violet Gaspar  
 Mr. Taketoshi Gibo  
 Mrs. Patsy L. Gibson  
 Mr. Albert A. Gilding  
 Mr. Lorin T. Gill  
 Mrs. Stanley E. Gillmar  
 Mr. Frederik C. Gjessing  
 Mrs. Amory Goddard  
 Ms. Lela Goodell  
 Mr. Milton Goto  
 Miss Bonnie Graham  
 Mr. Joe G. Grant  
 Mrs. Patricia O. Greenwell  
 Mrs. Robert H. Grosjean  
 Mr. David Grossman  
 Mrs. Jean A. Grover  
 Mrs. Natalie Gullede  
 Ms. Kathy Gurski  
 Mr. Klaus O. Haberich

Miss Dorine S. Haglund  
 Mrs. W. Howard Haines  
 Mr. Philip D. Haisley, Jr., AIA  
 Hale Naua III  
 Ms. Kathleen "Chip" Haley  
 Mr. Take Hama  
 Mr. Dickie Hamada  
 Mrs. Charles W. Hancock, Jr.  
 Ms. Elaine Hara  
 Mrs. Paula Harper  
 Mrs. Eva R. Hart  
 Mr. Richard S. Hart  
 Miss Nellie M. Hartman  
 Mrs. John E.F. Hassell  
 Ms. Constance Hastert  
 Mr. Norman Haugerud  
 Hawaii Army Museum  
 Hawaii State Library  
 Mr. Frank O. Hay, Jr.  
 Mr. John M. Hayakawa  
 Mr. S.M. Hayamoto  
 Mrs. Hazel Hee  
 Mrs. Joanne Heim  
 Mr. William T. Henderson  
 Mrs. Margaret M. Hendrie  
 Mr. and Mrs. George E. Heneghan  
 Mr. Robert A. Herlinger  
 Mrs. Colin J. Herrick  
 Mrs. Terry Hickson  
 Mrs. William L. Higdon  
 RAdm. and Mrs. Ronald D. Higgins  
 Mr. Calvin S. Higuchi  
 Mr. Lawson T. Hill  
 Mrs. Carolyn S. Hind  
 Mrs. Vern Hinkley  
 Miss Asa Hinochi  
 Mr. Tetsumi Hiramoto  
 Historic Sites Section  
 Mrs. Jane L. Hobler  
 Dr. William J. Hoe  
 Mrs. Lois L. Holcomb  
 Mrs. Berenice C. Holmes  
 Mr. Tommy Holmes  
 Mrs. Rose V. Holt  
 Mr. Alan S. Holzman  
 Dr. Robert J. Hommon  
 Mr. Ralph C. Hook, Jr.  
 Mrs. Dudley Hoolhorst  
 Mr. Bernhard L. Hormann  
 Ms. Liz Howard  
 Mr. Barry S. Hudson  
 Mrs. Robert E. Huntzinger  
 Mrs. Harry J. Hutchens  
 Ms. A. Miyo Ichijo  
 Ms. Carole M. Ikeda  
 Mr. Goro Inaba  
 Mr. Fred Ito  
 Lt. Col. James K. Iwamura  
 Mr. James B. Jacobs  
 Mrs. Eleanor W. Jacobsen  
 Mr. Ted James  
 Mr. J. Fred Janssen  
 Mrs. Doris Jasinski  
 Mr. Robert Jay  
 Jefferson Elementary School  
 Mrs. Mary Lou Jeffrey  
 Ms. Joy Johnson Jeffus  
 Jiffy Set, Inc.  
 Mr. Gordon L. Johnson, Jr.

**"Make no mistake, the historic preservation arena  
 in Hawai'i is alive, well, and working for the  
 well-being of our entire state."**

**Robert Gerell, Chairman, Historic Hawai'i**

Ms. Pam Beck  
 Ms. Betty Beggs  
 Mrs. Gracia Rasor Bell  
 Mrs. Helen M. Benedict  
 Mr. Gerald Bergh  
 Mr. Bernard Bergstein  
 Miss Beatrice E. Billings  
 Mrs. Pauline W. Birtley  
 Ms. Sandra R. Black  
 Mrs. Malia Blokker  
 Mr. Peter Blumberg  
 Mrs. W. Roger Booth  
 Mr. Vance Borland, Jr., ASID  
 Mr. Charles Bouslog  
 Mr. John R. Bowie, AIA  
 Mrs. J.P. Bowman  
 Mr. Kent Bowman  
 Mrs. Gordon W. Bradley  
 Mr. Leroy Brandon  
 Mr. William S.K. Brandt  
 Mrs. Phyllis E. Brasser  
 Brigham Young University  
 Miss Maurine O. Brinegar  
 Mrs. Balbi Brooks  
 Ms. Brooke Brown  
 Mr. David T. Brown  
 Mrs. Jessie E. Brown  
 Ms. Pamela J. Brown  
 Miss Helen L. Brugos  
 Ms. Barbara Bryan  
 Mrs. Elizabeth Buck  
 Mrs. Eva Budar  
 Mr. James C. Bull  
 Mrs. C.E. Burns, Jr.  
 Mr. Henry W. Buscher  
 Mr. W.M. Bush  
 Mrs. Clara Bushnell  
 Mr. Kevin J. Calegari  
 Mrs. Kathleen A. Callaghan  
 Mrs. David L. Callies  
 Mrs. Alexander Cameron  
 Mr. J. Walter Cameron  
 Mr. Donald C. Camp  
 Mrs. Margaret M. Camp  
 Mr. Paul F. Campbell  
 Mrs. Phoebe Campbell

Mr. James A. Chiddix  
 Mrs. Cathy Ching  
 Mr. Kenneth D.H. Chong  
 Mrs. Ivanelle K. Choy  
 Mrs. Robert H. Christy  
 Mr. Al Chun  
 Ms. Peggy Chun  
 Mrs. Bernard A. Clarey  
 Mrs. Athalie R. Clarke  
 Mrs. Lori Claussen  
 Dr. Paul L. Cleghorn  
 Ms. Judy Cochran  
 Dr. Myron C. Cole  
 Mr. Tomas J. Cole  
 Mr. Jesse C. Conde  
 Mrs. Harrison R. Cooke  
 Mrs. Robert Cooke  
 Mrs. Charles M. Cooke III  
 Mr. Charles M. Cooke IV  
 Mrs. Gerald R. Corbett  
 Miss Merry Lee Corwin  
 Mr. Robert Costa  
 Mr. Don R. Cowell  
 Mr. John Craft  
 Ms. M. Creech  
 Mr. Dee M. Crowell, AIA  
 Mr. Andy Cummings  
 Dr. Charles C. Custer  
 Ms. Cynthia Cutler  
 Mrs. Estelle Cutler  
 Mr. Gordon H. Damon  
 Mr. Richard C. Damon  
 Mr. C.F. Damon, Jr.  
 Mr. Gilbert N. Davis  
 Mr. Mark S. Davis  
 Dr. A. Grove Day  
 Mrs. Sybil Dominis Dean  
 Mrs. S.A. Derby  
 Ms. Mildred Derzon  
 Mrs. Susan Des Jarlais  
 Mrs. Leslie M. Detor  
 Mr. William C. Deutscher  
 Ms. Jean Ellyn Dickinson  
 Mrs. Helen Duryea Dietz  
 Mrs. J.W. Dilks  
 Mrs. Frances Dinnan

Mr. John Paul Jones Mr. Jonathan L. Jurevic Ms. Joan Kagawa Mr. Kivomi Kageyama Mr. Ernest K. Kai Mr. Yasuto Kaihara Mrs. Robert S. Kalison Kamehameha Schools Mr. Howard Karr Mrs. Ruth T. Katsunuma Miss Diane Kawauchi Ms. Jalna S. Keala Mr. Gard Kealoha Mrs. John Keat Mrs. Charles J. Keever Mrs. Liz Keller Mrs. George Kellerman Mr. Joseph Kennedy Mr. H.K. Bruss Keppeler Mrs. Barbara H. Kerbox Mrs. Kenneth R. Kerns Miss Alice Kiewit Mr. W. Norman King Mrs. Mary Joe Kinnison Miss Audrey E. Kitagawa Mrs. F. Willard Knapp Mrs. Barbara Kneisley Miss Katherine Knight Mr. Victor Kobayashi Mr. Robert M. Kohr Mrs. Steven J. Kolar Kona Historical Society Dr. Elaine K. Kono Dr. Thomas Kosasa Ms. Betty Krauss Ms. Kathi Kreinik Miss Stacey Kube Mr. Edgar B. Kudlich Mr. Alton Kuioka Mrs. Blossom Kunewa Miss Harriet Y. Kuwamoto Mr. Steve Kyono Mrs. J.R. Laidlaw Mrs. Ardith C. Lam Mrs. Evelyn Lance Miss Lezlie A. Lapata Mr. Edward B.K. Lapsley Mr. Hiram Lau Ms. Janice Lau Mrs. Grace Mary Lawson Dr. Takie Lebra Mrs. Ranita R. LeGrande Ms. Cynthia H. Lee Mrs. Katherine B. Lee Mr. Van Lee Ms. Patricia S. Leffingwell Mr. Otto Lehrack Leilehua High School Mrs. Mary Leineweber Mrs. Melville L. Lemon Mr. Shek Pan Leong Mr. Aaron Levine Mrs. Dudley C. Lewis Ms. Judy Lindeman Ms. Jocelyn Linnekin Mrs. Jane Lipp Dr. George Liu Rep. Michael Liu Mr. Tom Loffman Mr. Mark D. Lofstrom Mr. Keith Long	Mr. John E. Loomis Miss Christina R.N. Lothian Ms. Cathy M. Lowder Mr. James C. Luckey Ms. Cynthia J. Luis Mr. Albert W.H. Lum Mr. Benjamin Lum Mr. Wing Tek Lum Mr. Douglas P. Luna Ms. Vivian Piilani B. Luning Mrs. William B. Lupton Ms. Anajean Lusk Mr. Samuel A.B. Lyons M/C Ventures, Inc. Mr. Michael B. MacBride Mrs. Heather B. MacGregor Mr. Stephen H. MacMillan Mrs. Lillie E. Mackenzie Mr. Douglas Madden Mr. Kelsey Maddox-Bell Mrs. Constance R. Major Mrs. Alvin I. Malstrom Mr. David W. Malvin Ms. Janet L. Mandrell Mrs. A. Lester Marks Mr. Michael J. Marks Ms. Marilyn Marsh Mr. P.A. Martineau Mr. Peter Martinez Rep. Barbara C. Marumoto Mr. Glenn E. Mason Mr. Lorrin T. Matsunaga, AIA Mr. Creighton U. Matoon Maui Historical Society Mr. Stanley K. May Ms. Eunice McCain Mrs. James McCall Mrs. Vern I. McCarthy, Sr. Mr. Floyd J. McDonald Ms. Ruby P. McDonald Mr. Reese McDougall Mr. Morton McGinley Mrs. Beverly H. McKeague Mrs. Peter W. McKenney Mrs. Nancy I. McMullan Mrs. Lola Mench Mr. John Mendelsohn Mr. Jeffrey Mermel Mrs. William C. Meyer Mrs. Jeanne N. Michael Ms. Patricia Miller Mr. Gregory A. Mills Mrs. Charline Mitchell Ms. Muffy Mitchell Mr. Norman Mitchell Mrs. Ko Miyataki Mrs. W.W.G. Moir Ms. Alexis Montgomery Mrs. Margaret L. Montgomery Mr. Ross W. Moody Mr. H. Brian Moore Ms. Jeanne A. Moore Mrs. Elizabeth Moran Mr. Paul F. Morgan Mrs. Thelma J. Morgan Mr. John A. Morris Ms. Susan J. Moss Ms. Nancy A. Mower Miss Ruth L. Munro Brig. Gen. F. P. Munson Mrs. Douglas Murphy	Mr. Ralston Nagata Ms. Genevieve A. Nahulu Bishop Dwight R. Nakamura Mrs. Juliette Nakashima Mr. Solomon K. Naone Ms. Victoria Nasser Mrs. Herman D. Nichols Miss Diane Nielsen Mrs. Anne W. Noble Mrs. Annabelle L. Nobriga Mrs. F. Norwood Mrs. Diana R. Nui Ms. Patricia O'Connor Mr. John B. O'Donnell Mrs. Ethel U. O'Neil Dr. Dennis Ogawa Mr. Ray I. Okimoto Mr. Shungo Okubo Mr. Robert E. Oliver Mr. Susumu Ono Oral History Project Mrs. Otto Orenstein Mrs. Robert Orlik Mrs. Garret Oshiro Ms. May Oshiro Mr. Chip Owen Mrs. H.D. Paxton Mr. Charles Peacock Ms. Patricia C. Peacock Mrs. Leilani Peale Mrs. Eugenia L. Pearse Ms. Judith Peiklo Mr. David Penhallow Mr. Heine N. Peters Mrs. Carol L. Phillips Ms. Dorothy C. Phillips Ms. Connie Pickett Mr. LaRue W. Piercy Mr. David T. Pietsch, Jr. Mr. Richard Pollock Miss Cecilia Ponte Dr. Mary R. Porter Mr. P.L. Porter	Mr. Robert A. Ramsay Mrs. M.L. Randolph Ms. Susan Rathborne Real Estate Works HI Mr. Carl L. Reber Ms. Donna B. Reber Ms. Rosemary Reder Dr. J.I. Frederick Reppun Miss G. Jean Richards Mrs. Loretta Richert Mrs. Richard E. Robb Mrs. Barbara K. Robello Ms. Barbara Robeson Mrs. Julia W. Rodenhurst Mr. Robert Rogers Ms. Susan Rogers-Aregger Ms. Jean E. Rolles Mr. Jack M. Rolls, Sr. Mr. Sam Rolph Dr. Roger G. Rose Mrs. Violet-Marie Rosehill Mrs. Herman B. Rosen Mrs. Margaret D. Ross Mrs. Jamie N. Runnells Mr. J. Ward Russell Mr. Steve Salis Mr. Frank Salmoiraghi Dr. J.H. Scaff, Jr. Mrs. Fred C. Schattauer Mrs. Geraldine Hyde Schipper Mr. Robert C. Schmitt Mrs. Frances Schuman Mrs. L.W. Schutz Ms. Dorothy Scott Ms. Marjorie B. Scott Mr. Walter Scott, Jr. Dr. Niall M. Scully Ms. Marion Senger Dr. John Seto Mrs. Jack Shea Miss Alice Shelly, FCSI Mr. Robert J. Sherwood Mr. David Shibata
<p>“Historic Hawai‘i sees the real need for the establishment of preservation programs and acts upon that need. Through their programs, our small towns can be revitalized, our cities made more beautiful, and our unique heritage shared.”</p> <p>William S. Richardson, Second Vice Chairman.</p>			
Mr. Charles Barton Potter Mr. Gordon Potter Mr. James Hugh Powers Mr. David W. Pratt Miss Joan C. Pratt Ms. Lenore M. Prehler Mr. Glenn Preus Mrs. Heidi G. Price Mrs. Dora E. Proffitt Mrs. Robert A. Purdue Mrs. Nanette Purnell Mrs. Dorothy R. Pyle Ms. Barbara M. Quinlan Ms. Cynthia B. Quisenberry Mr. Alan C. Ragains Mr. Rick Rainalter Mr. U.J. Rainalter, Jr.		Mr. C. Addison Shipman Mrs. Sindee Sieber-Remenih Miss Virginia Siewertsen Ms. Arianna Simonics Mr. Sandy Sims Miss Margaret E. Sinclair Mr. Mike Sitch Ms. Esther A. Smith Mrs. J. Don Smith Ms. Jenney R. Smith Mrs. William O. Smith Dr. Bart Smith, D.C. Mr. Lloyd J. Soehren Mr. S. Steven Sofos Ms. Stephany L. Sofos Ms. Linn M. Sol Mrs. Mae Soong	



Mr. Walter Southward  
 Mrs. John H. Southworth  
 Mr. David Sox  
 Mrs. W.C. Speer  
 Mrs. Patt R. Spencer  
 Mr. Cornelius F. Spillane  
 Mr. Edward Stackhouse  
 Mrs. Marilyn Stassen-McLaughlin  
 Mrs. Herbert Stecker  
 Miss Ann Stegmaier  
 Mrs. Marion L. Steinhauer  
 Mr. Ross W. Stephenson  
 Mrs. Marquis Stevens  
 Mrs. Jane Stevenson  
 Miss Alice A. Stewart  
 Mrs. Paulette Stone  
 Ms. Linda Streitfeld  
 Mrs. Joe W. Stryker  
 Ms. Mary Anne Stubenberg  
 Mrs. Richard L. Summers  
 Mr. Richard C. Sutton, Jr.  
 Dr. Francis K. Sylva  
 Ms. Ruth Tabrah  
 Miss Chieko Tachihata  
 Mr. Gerald Takano  
 Mrs. Rufus M. Takitani  
 Mr. Paul Y. Tamura  
 Mrs. Kinuko Taniguchi  
 Mr. Tony Taniguchi  
 Ms. Cynthia H.H. Thielen  
 Ms. Barbara Thompson  
 Mrs. Barbara J. Thurston  
 Mrs. Barbara Tilley  
 Mr. Donald H. Tokunaga  
 Mrs. Patsy A. Towill  
 Mr. James Tracz  
 Miss Gladys Traut  
 Mrs. Barbara Trens  
 Mrs. C.W. Trexler  
 Mrs. Genevieve F. Trout  
 Dr. Jerome L. Tucker  
 Mr. Gene Turchi  
 Mrs. Farrant L. Turner  
 Mr. Karl S. Ulrich  
 Mrs. William Upchurch  
 Ms. Irina L. Urban  
 Mr. Ernest Uu  
 Ms. Anne Vacca-Kay  
 Mr. Robert E. Van Dyke  
 Mrs. Herbert G. Van Orden  
 Mr. Edward VanGorter  
 Mrs. Marion N. Vaught  
 Mrs. J. Alexander Veech  
 Miss Puamohala Vidinha  
 Mrs. Troy Von Tempsky  
 Mrs. Mary Anne Vorfeld  
 Mrs. Hilda H. Voss  
 Mrs. Elizabeth M. Waldron  
 Mrs. Norah E. Walker  
 Mrs. Una C. Walker  
 Miss Jean M. Wall  
 Mr. Howard D. Wallace  
 Mrs. Helen Ware  
 Ms. Pamela H. Warnken  
 Mr. Craig Watanabe  
 Mrs. A.D. Waterhouse  
 Mrs. R.E. Watts  
 Mrs. Dorothy Davis Webb  
 Ms. Gertrude L. Weidig  
 Mr. Jesse C. Wells  
 Mrs. Ann W. Wheat

Mrs. Rina M. Whelan  
 Mrs. L. Harold Whitaker  
 Ms. Gail White  
 Mrs. R.E. White  
 Mrs. Tina Lyman Whitmarsh  
 Mr. Howard C. Wiig  
 Mrs. S.W. Wilcox  
 Ms. Lois B. Wilder  
 Mr. Wentworth Wilder, Jr.  
 Mrs. Norma M. Williams  
 Mrs. Rodney F. Williams  
 Mr. James I. Williamson  
 Mrs. Charline B. Wilson  
 Ms. Jean E. Wilson  
 Ms. Susan A. Wilson  
 Mr. Thomas Wilson  
 Ms. Cynthia Winegar  
 Mrs. George Winters  
 Mr. Thomas W. Witten  
 Ms. Betty Wolfgram  
 Mr. Eric Wong  
 Mrs. Napualani V. Wong  
 Mr. Ross Wong  
 Mr. Vernon Woo  
 Mrs. Hart D. Wood  
 Mr. Richard G. Wood  
 Mrs. Frank Woolley, Jr.  
 Miss Midgieann L. Wright  
 Mrs. Ellsworth J. Wyosnick  
 Ms. Haruko Yabusaki  
 Mrs. Harriet Yamada  
 Mr. Andrew Yanoviak  
 Mrs. Kathy Yeager  
 Ms. Candace M. Yim  
 Ms. Mary Richards Yort  
 Mrs. John Youell  
 Mrs. J. Gray Zabriskie  
 Mr. William R. Zappas

#### STUDENT/SENIOR

Mrs. Maridell B. Alexander  
 Mr. Norman Algiers  
 Mr. Page M. Anderson  
 Mr. and Mrs. Harry Ashendorf  
 Mr. William T. Atkins  
 Ms. Jean L. Barker  
 Ms. Doris V. Bassity  
 Ms. Shirley D. Bennett  
 Mrs. C.J. Birnie  
 Ms. Aurelia Bisby  
 Mr. Norman J. Black  
 Mrs. Lillian Bloomfield  
 Ms. Marian L. Boeke  
 Mr. William O. Boland  
 Mrs. Hannah E. Bonsey  
 Mr. Richard Bordner  
 Mrs. Elizabeth S. Bowyer  
 Mrs. Isabel Boyen  
 Mr. William R. Brainerd  
 Ms. Marianne Brennan  
 Mrs. C.A. Brodewolf  
 Mrs. Dianne M. Brogden  
 Mr. Sidney Brooks  
 Mrs. Helen M. Brown  
 Mrs. Ward W. Brown  
 Miss Irva Brubacher  
 Ms. Peggy Kehoe Buchwach  
 Mr. Kenneth J. Bull  
 Mrs. John W. Bustard  
 Mr. William Bustard  
 Mrs. Sharon Calder

Mr. R. Alan Campbell  
 Mrs. Robert W. Campbell  
 Mr. William Carse  
 Mrs. H. Shaw Carter  
 Miss Laura J. Cassidy  
 Mrs. Wiona V. Chaney  
 Mrs. Dai Tim Chang  
 Mr. Tin-Yuke Char  
 Mrs. A.L. Claytor  
 Dr. Ellen Colburn-Rohn  
 Miss Agnes C. Conrad  
 Mrs. Irma M. Conwell  
 Mr. Frank E. Cook  
 LCDR. Wilmer H. Cressman  
 Dr. E. Creutz  
 Mrs. Ruth D. Cushnie  
 Mrs. G. Dudley Dambacher  
 Mrs. Peggy Daniel  
 Mrs. Ralph De Mars  
 Mrs. Walter C. de Renne  
 Ms. Helen Delo  
 Mr. Philip J. Deters  
 Mrs. Virginia Devine  
 Ms. Ruth M. Dowling  
 Mrs. Phyllis A. Drake  
 Mrs. Barbara F. Earle  
 Mrs. D.S. Embree  
 Ms. Larissa G. Essig  
 Ms. Denby Fawcett  
 Ms. N. Feuerstein  
 Col. Shepler W. Fitzgerald, Jr.  
 Ms. Stephanie L. Fitzpatrick  
 Ms. Joan M. Flaharty  
 Mr. W. Patrick Flanagan  
 Mrs. Elaine Flores  
 Mr. Sam Ford  
 Mrs. Evarts C. Fox  
 Mrs. Ronald Francavilla  
 Miss Sophie M. Frandsen  
 Mrs. Dorothy Frasure  
 Mrs. H. Lockwood Frost  
 Ms. Janet Wyatt Fullerton  
 Mrs. Lenora M. Gaddis  
 Mr. Reginald P. Gage II  
 Mr. Ralph G. Geiser  
 Mrs. Luigi G. Giacometti  
 Mr. J. Richard Gossett  
 Mr. Richard A. Greer  
 Ms. Thelma F. Greig  
 Miss Ann L. Halsted  
 Mrs. Valerie M. Hannon  
 Ms. Kitty K. Hardeck  
 Mr. George P. Harris  
 Mrs. Joanne Harriss  
 Mrs. Fritz Hart  
 Mrs. Patricia L. Hartwell  
 Mrs. Clark J. Hastert  
 Mr. Robert F. Hemphill  
 Mr. Saichi Higashi  
 Miss Kathleen V. Higgins  
 Miss Irmgard Hormann  
 Mr. Hugh Howell  
 Mr. John W. Hoxie  
 Mrs. Muriel L. Isherwood  
 Mrs. Asako Ishimoto  
 Mr. Michael Jackson  
 Ms. Nellamae Jacobson  
 Mr. Allan Jim  
 Mrs. Allen R. Johnson  
 Mrs. Betty L. Johnson  
 Miss Evlyne I. Johnson

Ms. Dorothy R. Joyce  
 Mrs. Philip Kam  
 Mr. Stephen S. Kanda  
 Ms. Karen Kane  
 Miss Lani Kea Kanehe  
 Mrs. Gene Kay  
 Mr. Samuel Kendall  
 Mrs. Cecily H. Kikukawa  
 Mrs. Maurice King  
 Miss Beatrice H. Krauss  
 Mrs. Kini O'Keahi Kua'ana  
 Mrs. Karl Kuppe  
 Mrs. David E. Larsen  
 Ms. Vivian E.V. Laury  
 Mrs. Constance B. Lawyer  
 Ms. Linda M. Le Geyt  
 Mr. Edward E. Lee  
 Rep. Andrew D. Levin  
 Mr. Addison W. Lewis  
 Mrs. Virginia May Lewis  
 Mr. Malcolm H. Love  
 Mrs. Clorinda L. Lucas  
 Mrs. D. Belden Lyman  
 Ms. Alison MacBride  
 Mrs. Alex MacGregor  
 Mrs. A.O. Marrack  
 Mrs. Donald C. Matthews  
 Mrs. Jessie C. Matthias  
 Ms. James L. May  
 Mrs. E.J. McClurkin  
 Mrs. W.C. McDermid  
 Mrs. Albert E. McGillivray  
 Ms. Alma McGoldrick  
 Mrs. Elizabeth May McHaney  
 Ms. Pearle Meserve  
 Mrs. Fay Wren Midkiff  
 Mrs. Jean Miller  
 Mr. W. Robert Miller  
 Dr. Donald D. Mitchell  
 Mrs. Glenn G. Mitchell  
 Mr. R. Burke Morden  
 Mrs. W. A. Morrison  
 Mrs. Margaret E. Mullahey  
 Mr. Lyle E. Nelson  
 Mrs. Mabel Neves  
 Mrs. Rose Jackie Norbrega  
 Mrs. William E. Norcross  
 Mr. Christopher Norrie  
 Mrs. Eileen M. O'Brien  
 Mrs. M.L. O'Brien  
 Miss Margaret T. Ohta  
 Mr. Champ S. Ono  
 Mr. and Mrs. Vladimir Ossipoff  
 Ms. Erin S. Palmer  
 Mrs. T.M. Parker  
 Ms. Winona Paschoal  
 Mr. James A. Paulauskas  
 Mr. Vernon P. Peck  
 Rev. Kenneth D. Perkins  
 Mr. Paul C. Peters  
 Mr. and Mrs. Max L. Pilliard  
 Mrs. E.M. Porter  
 Mr. Kenneth J. Pratt  
 Mrs. Howard W. Prettyman  
 Mrs. Rosalie Prussing  
 Mr. Kulani Purdy  
 Miss Mildred L. Read  
 Mrs. Mary Deas Reynolds  
 Mrs. Jessie S. Ricketts  
 Mrs. Ethel S. Roehrig-Lamb  
 Mr. J. Albert Roesch

Mr. Charles O. Rogers  
 Mrs. Miriam Rogers  
 Mr. D. Campbell Ross  
 Mr. Louis E. Roth  
 Mr. John Ryman  
 Mrs. Janet A. Sanborn  
 Miss Aileen F. Sander  
 Mrs. Beatrice N. Savage  
 Mr. Bim Schelderup  
 Mrs. Marc Seastrom  
 Mr. DeLos A. Seeley  
 Mrs. E.B. Shirk  
 Mrs. Lloyd E. Short  
 Mrs. Joseph Sikes  
 Mr. John S. Silva, Jr.  
 Mrs. Frederick Simpich, Jr.  
 Mrs. Harry Smith  
 Mr. R.M. Smith  
 Mrs. Ruth E. Snook  
 Mrs. Howard W. Soule  
 Mrs. Alfred P. Souza  
 Mr. C.H. Spiegelberg  
 Mrs. Edith G. Stanley  
 Mrs. Helen F. Strubbe  
 Mrs. Harold J. Stueky  
 Ms. Lillian Sullivan  
 Mrs. Frances L. Sutherland  
 Mr. E. White Sutton, Jr.  
 Mrs. Sarah L. Sweeney  
 Mrs. Francis Tappaan  
 Mrs. William A.L. Thoene, Sr.  
 Mrs. Antonette Thomson  
 Mrs. Douglas B. Thomson  
 Mr. James P.D. Thropp, Jr.  
 Mrs. Helen Judd Toms  
 Miss Maydean K.L.H. Torres  
 Mr. Robert Townsend  
 Mrs. Joel Trapido  
 Mrs. Ruby Troy  
 Mr. Edgar B. Twelker  
 Mrs. Breck Tyson  
 Miss Eileen Wagoner  
 Dr. John N. Warner  
 Mr. Willis L. Warner  
 Mrs. Alice C. Wedemeyer  
 Mrs. Donald F. Weiss  
 Mrs. Katherine H. Wery  
 Mrs. Amanda Westlake  
 Mrs. Baldwin Whittier  
 Mrs. Barbara C. Wiebenga  
 Ms. Linda Wiig  
 Ms. Ruth R. Wilkinson  
 Ms. Lokelani Williams  
 Mr. Sau Hoy Wong  
 Mr. Heaton L. Wrenn, Jr.  
 Mrs. Sarah Lee Yang  
 Mr. Linton Yee  
 Ms. Ann Yoklavich  
 Mrs. Fred O. Young  
 Miss Patricia Zane

## CORPORATE HERITAGE ASSOCIATES

**"The Corporate Heritage Associates program recognizes those businesses that contribute \$1,000 or more in restricted and unrestricted support on an annual basis. Historic Hawai'i is fortunate to have their support, and I am pleased to join the Foundation in thanking the following businesses for their generous commitment."**

*C. Dudley Pratt, Jr.  
 Chairman, Corporate Heritage Associates*

Alexander & Baldwin, Inc.  
 Aloha Airlines  
 American Express Travel Related Services Co., Inc.  
 Amfac, Inc.  
 Amfac Properties  
 APCOA, Inc.  
 Associates Four  
 Bank of Hawaii  
 Budget Rent-A-Car Systems, Inc.  
 C. Brewer & Co., Ltd.  
 C.S. Wo Foundation  
 Coca-Cola Bottling Co. of Honolulu  
 Duty Free Shoppers, Ltd.  
 Estate of James Campbell  
 GracePacific Corporation  
 Hawaii Tribune Herald, Ltd.  
 Hawaiian Electric Industries, Inc.  
 Hawaiian Host Chocolates  
 Hawaiian Telephone Company  
 Hawaiian Trust Company, Ltd.  
 Hemmeter Investment Company  
 Kong Lung Co.  
 M & E Pacific, Inc.  
 National Securities & Investment  
 Oceanic Cablevision  
 Oceanic Properties, Inc.  
 R.M. Towill Corporation  
 Shidler & Company  
 The Shamrock Group  
 The Westin Mauna Kea  
 Victoria Ward, Ltd.

## PATRON

1st Nationwide Savings  
 Hawaiian Cement  
 Min Plastics & Supply, Inc.  
 Theo H. Davies & Company, Ltd.

## PARTICIPATING

American Land Company  
 Arthur Young & Co.

Cardinal Mailing Services, Ltd.  
 Dole Hawaii Division  
 First Hawaiian Bank  
 First Interstate Bank of Hawaii  
 Grosvenor International (Hawaii), Ltd.  
 Hawaiian Crane & Rigging, Ltd.  
 Honolulu Advertiser, Inc.  
 Kajioka, Okada & Partners, Inc.  
 Mauna Lani Resort, Inc.  
 Mouse Builders, Inc.  
 Oahu Market Associates, Inc.  
 Pacific Construction Co., Ltd.  
 Peat, Marwick, Mitchell & Company  
 Phillips, Brandt, Reddick & Associates  
 Rush, Moore, Craven, Kim & Stricklin  
 Title Guaranty of Hawaii, Inc.  
 Touche Ross & Company

## CONTRIBUTING

Adams Design, Inc.  
 Arthur Andersen & Co.  
 Bank of Honolulu  
 Bishop Trust Co., Ltd.  
 Chaney Brooks & Company  
 Chinatown Merchants Association  
 Classic Cars  
 Commercial Shelving, Inc.  
 Coopers & Lybrand  
 D.H. Graham Company, Ltd.  
 Del Monte Corporation  
 Dillingham Investment Corporation  
 E.K. Fernandez Shows  
 Ernst & Whinney  
 Franklin Gray & Associates/Architects, Inc.  
 Grant Thornton  
 Grubb & Ellis Co.  
 Halekulani Hotel  
 Hawaii National Bank  
 Hawaiian Life Insurance Co., Ltd.  
 Ilikai at Waikiki Beach  
 Island Insurance Company, Ltd.  
 Island Title Corporation  
 Jardine Emmett & Chandler  
 Hawaii, Inc.  
 Killingsworth, Stricker, Lindgren, Wilson & Associates, Inc.  
 King & Neel, Inc.  
 Lynn Tilton, Ltd.  
 Maggie Parkes & Associates, Inc.  
 Magoon Estate/Magoon Brothers, Ltd.  
 Midpac Lumber Company, Ltd.  
 Milici Valenti Smith Park Advertising, Inc.  
 Myers Properties Corporation  
 Pomare, Ltd.  
 Professional Image, Inc.  
 Royal Contracting Co., Ltd.

Sears, Roebuck & Co.  
 Servco Pacific, Inc.  
 Smith Himmelmenn & Shklov  
 Stryker Weiner Associates, Inc.  
 Sun Fashions of Hawaii, Ltd.  
 TRB/Hawaii Ltd.  
 The Travelers  
 Wimberly, Whisenand, Allison, Tong & Goo, Architects, Ltd.  
 Young Laundry & Dry Cleaning

## SUPPORTING

Ameron H C & D  
 Bosh, Ltd.  
 Crossroads Press, Inc.  
 Edward Enterprises, Inc.  
 Honsador, Inc.  
 Hotel Hana-Maui  
 IBM  
 Ming Chew Associates  
 Territorial Savings & Loan Association  
 Waipio Valley Shuttle

## TRUSTS, FOUNDATIONS, ORGANIZATIONS

*Trusts, foundations, organizations are numbered among the most constant and generous supporters of Historic Hawai'i. Their contributions are vital to the success of our many education and rehabilitation projects.*  
 Atherton Family Foundation  
 Cooke Foundation, Ltd.  
 Fred Baldwin Memorial Foundation  
 Frear Eleemosynary Trust  
 G.N. Wilcox Trust  
 Hawaii Committee for the Humanities  
 Hawaii Hotel Industry Foundation  
 National Endowment for the Arts  
 Office of Hawaiian Affairs  
 W.A. Gerbode Foundation

## IN-KIND

## CONTRIBUTIONS

Ask Mr. Foster Travel Service  
 Eagle Distributors  
 Fishermen's Wharf Restaurant  
 Honolulu Club  
 John Guild Inn  
 Kauai Resort Hotel  
 Kemoo Farm Restaurant  
 Mauna Kea Beach Resort  
 Mid-Pacific Airlines  
 Mills Gallery  
 Outrigger Hotels Hawaii  
 Professional Image, Inc.  
 Sea Life Park  
 The Biltmore Hotel, Los Angeles  
 The Royal Hawaiian Hotel  
 Waikiki Beach Tower Hotel  
 Waimea Falls Park  
 Yacht Harbor Restaurant

*\*We have made every effort to insure an accuracy and complete listing of our supporters. If, however, we have misspelled or inadvertently omitted any name, please let us know so that we may make corrections. Mahalo.*

## Historic Hawai'i Foundation

119 Merchant St., Room 402  
Honolulu, HI 96813

### EXECUTIVE COMMITTEE

Robert H. Gerell  
Chairman of the Board

Phyllis G. Fox  
President

William W. Paty, Jr.  
First Vice Chairman

William S. Richardson  
Second Vice Chairman

Charles Pietsch, III  
Secretary

Arthur Tokin  
Treasurer

Ronald M. Letterman  
William F. Gleason  
Members at Large

### BOARD OF TRUSTEES

Peter D. Baldwin  
Vance Borland  
Wm. Frank Brandt  
Keola Childs  
Robert Fujimoto  
Joseph W. Hartley, Jr.  
Cecily Kikukawa  
Warren Luke  
Gladys Ainoa Brandt  
Kenneth F. Brown  
Bonnie Eyre  
Norman Goldstein  
Larry E. Helber  
Phyllis Kunimura  
Michael Liu  
Wing Tek Lum  
Barbara Mills  
Douglas Philpotts  
James C. Reynolds  
William Stricklin  
Gerald Takano  
Jeffrey Watanabe  
A. Maurice Myers  
Teney Takahashi  
Donald Yamada

### PAST CHAIRMAN

Nathaniel R. Potter, Jr.

### TRUSTEES EMERITUS

Mrs. Allyn Cole, Jr.  
Mrs. H. Alexander Walker

Historic Hawai'i Foundation  
Post Office Box 1658  
Honolulu, Hawai'i 96806

Non-Profit  
Organization  
U.S. Postage  
**PAID**  
Honolulu, Hi.  
Permit No. 1301

## Historic Hawai'i Annual Meeting

We celebrate  
"The Year of the Hawaiian . . . Ho'olako 87"  
as we celebrate  
our Annual Meeting  
and pay special tribute to  
GOVERNOR JOHN WAIHEE,  
our first Governor of  
Hawaiian ancestry.

Wednesday, May 20, 1987  
Washington Place  
Honolulu, Hawai'i

4:30 p.m.  
Annual Meeting  
A Report to the Membership  
The Election of President  
Trustees Presentation of the  
1987 Preservation Awards  
The Governor's Award

6:00 p.m.  
An Island Celebration  
Cocktails, Heavy Pupus  
Hawaiian Music and Dance

Aloha Attire

R.S.V.P. May 15, 1987

### HISTORIC HAWAII STAFF

Development Director  
Marge S. Kam

Managing Editor  
Jane Banse

Main Street Coordinator  
Marni Herkes

Office Manager  
Raynette Nakamura

Special Events  
Ramona Mullahey  
Carmella Hernandez

Secretary  
Joan Saplan

Cover: Looking in the cave mouth at Hilini Pali  
petroglyph. Corson Hirshfeld. "Places in the Past,"  
Bishop Museum.