

HISTORIC HAWAI'I



THE CHANG FOOK BUILDING

1985-86
ANNUAL REPORT



Elson-Alexandre

From the Chairman

Fond memories are made of experiences, accomplishments and the achievement of goals. Looking back over the past year brings memories of many accomplishments which you, our Trustees and staff have made possible.

Our top priority was to successfully establish the Main Street Hawai'i Program. Progress began with the hiring of Al Fleming in January, the acceptance of West Kaua'i as the first project and Hilo as the second. Now Wailuku is moving quickly toward becoming our third Main Street town.

In addition to this major accomplishment, our volunteers applied for and received the necessary approvals from the University of Hawai'i Dean of the Graduate Division and the Dean of Arts and Humanities to establish a curriculum and Graduate Certificate Program in Historic Preservation.

Action Force members helped us make our Preservation Parade the most successful to date with over 1,600 people touring historic homes, learning the legends of historic Nu'uau Valley, experiencing history, appreciating our rich residential architectural heritage and learning how to care for their own homes.

Members of the Action Force, dedicated legislators and our state administration successfully monitored the passage of legislation which allows the state to lease under- and unused historic buildings to nonprofit organizations which can rehabilitate and maintain them as part of the ongoing legacy of Hawai'i.

We monitored the City and County of Honolulu's effort to create the rules and regulations to implement the real property tax exemption for homes listed on the State Register of Historic Places. And to follow up, we have originated an effort to create signs which will mark the homes and list historic and architectural information about them.

Our volunteers and staff studied the important Land Use Ordinance draft which proposes revision of the Comprehensive Zoning Code for the City and County of Honolulu. Recommendations have been made for changes which will strengthen efforts to preserve and protect our built heritage.

We continue to provide help on specific projects. Rehabilitation plans for Bishop Hall at Bishop Museum are being drafted, the Royal Brewery still stands, plans to restore two Tong buildings are being worked on, drafting a pilot project for the preservation of petroglyphs is underway.

I would like to thank you all, wish you Godspeed in the years ahead, and warmest aloha for the concern that we share for the heritage of our Hawai'i.

Nathaniel R. Potter, Jr.
Chairman of the Board

During the past year, a great deal of time has been spent on the Neighbor Islands listening to people's concerns, working with government and talking with our members. The changes taking place are remarkable.

People are coming together because they care about the future of our state. There is a growing consensus that we must give direction to that future—to our future—and that the preservation of our unique Hawaiian heritage must be a significant part of that future.

People are looking beyond their specific concerns to the greater good of everyone who lives in and loves Hawai'i.

Historic Hawai'i has achieved a special place and recognition. We have earned a reputation. People are looking to us to help create a vision for tomorrow.

This time of change is coming at many levels—industry, travel, communications, education, jobs, leadership and government. These changes affect us greatly. The changes offer us opportunities never available to us in the past.

The workshops we held throughout the state in September brought together people with many concerns for preservation, conservation and traditions. The talk was of consensus, of working together, of setting priorities, of striving for excellence.

Leadership is vitally needed.

We cannot save and preserve every building and archaeological site in Hawai'i, but we can plan and work to save the very best.

We cannot examine and interpret every *heiau*, but we can, through careful and judicious study, learn from the very best.

We cannot continue to live in purely traditional lifestyles, but we can respect and continue to celebrate the most meaningful values.

We cannot save every plantation or rural town, but we can help the people living there to save what they feel is most important.

In partnership with government and business, we have answers to give, we have solutions to share and we have a vision which must guide the future growth of Hawai'i.

It is a vision of cooperation, of setting priorities, of saving the very best.

It is a vision that needs the voices of many people—it needs the activists, the conservatives, the environmentalists, the developers, the educators, the elderly and the young.

It is a time for setting priorities, for working together, for creating a vision which will lead us toward a Hawai'i which reflects our very special heritage.



Camera Hawai'i

From the President

Phyllis G. Fox

Phyllis G. Fox
President



Main Street Update

The establishment of the Main Street Program in Hawai'i was Historic Hawai'i's top priority in 1985. Main Street is an economic revitalization program for small towns and has been well received by state and county governments, business and community associations. The specific accomplishments of the program to date are:

- Al Fleming was hired in February 1985 as Statewide Coordinator.
- Seventeen educational programs were conducted on the Main Street concept and approach for government and business associations throughout the state.
- A three-day training conference was held in May on the Main Street philosophy and techniques. The conference was attended by 50 people, representing all the islands, from government, business and community organizations.
- Three communities—Hilo, West Kaua'i and Wailuku — organized local Main Street projects.
- Assisted the local Main Street Projects in the hiring and training of their project managers.
- Assisted the local Main Street

projects in obtaining funding for their programs:

Hilo's Annual budget is \$60,000—\$40,000 is being provided by Hawai'i County through its Community Development Block Grant (CDBG) program and \$20,000 comes from local merchants and individual contributions. In addition, Hilo's Main Street

Program will have access to other CDBG funds approved for downtown improvements. They have been allocated as follows:

\$ 35,000	Design Assistance Program
105,000	Demonstration Project
100,000	Low-interest Loan Fund

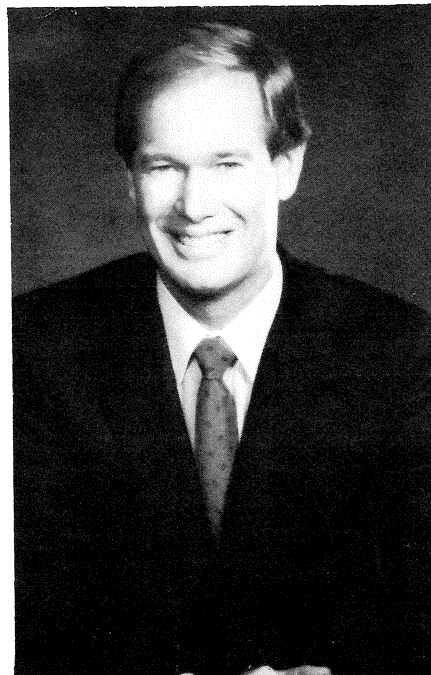
\$ 240,000 Total

(These funds will be administered by Hawai'i County's Department of Housing and Community Development.)

West Kaua'i's Annual budget is \$30,000—\$20,000 is being provided by local merchants, \$5,000 by the County of Kaua'i and \$5,000 by the Grant-in-Aid program of the Department of Interior administered by the State Historic Preservation Office.

Wailuku's Annual budget is \$30,000—\$15,000 is being provided by corporate donors and \$15,000 by local merchants, individuals and fundraising events.

• Funding for the statewide Main Street Program was secured from the State Legislature, State Historic Preservation Office/Department of Land and



*Duncan MacNaughton, Chairman
Main Street Hawai'i*

Eison-Alexandre



David Franzen

Waimea, Kaua'i

Natural Resources, trusts and foundations, corporations and individuals. In its first year of operation, Main Street raised 92 percent of its budgetary needs.

- The National Main Street Center staff and consultants provided technical assistance to Main Street Hawai'i and its local affiliates. A consultant team was used in Hilo and West Kaua'i to conduct an in-depth assessment of both communities' potential for success in implementing the Main Street Program.

Main Street is a proven program. It involves creating a public/private partnership that will work to produce change on an incremental basis. It is a slow, steady process. The decline of our small towns didn't happen overnight and success will not return overnight. In the past year, however, some changes began to take place.

Hilo launched its Main Street Program in November with a celebration that drew 250 people. The feeling was "Let's make it happen . . ." Several programs followed.

- A joint promotion and advertising campaign was held with the Downtown Improvement Association to market downtown Hilo as a shopping district.

- A fundraising campaign was launched.

- Organizational plans were

completed for the first year of operation.

- An in-depth assessment was conducted by the National Main Street Center's staff and consultants.

- Downtown Improvement Association membership increased.

West Kaua'i began its Main Street Program by conducting surveys to determine what merchants and consumers wanted to happen in their towns. The data, collected and analyzed, helped the project manager and the Main Street Committee direct their program plans toward promotional activities designed to bring more people into the community. Their accomplishments to date have been:

- Three promotional events attracted over 1,200 people.

- A beautification program for Hofgaard Park in Waimea, Kaua'i was carried out by senior citizens in the community. The park also received the 1,000,038th Tree of Aloha planted by Mrs. George Ariyoshi.

- A cleanup campaign was implemented at Menehune Ditch.

- The second annual Captain Cook Caper was held which celebrates Captain Cook's landing and is a major retail and social event for the area.

- The first year work plan was completed.

- An assessment of West Kaua'i's

economic revitalization potential was conducted.

Wailuku launched its Main Street Program in December. To date:

- A new community association was organized and incorporated.

- One hundred new members were recruited and enrolled in the association.

- A Main Street kick-off celebration was planned and implemented, drawing over 400 people.

- Wailuku participated in a Design Assistance Program with the Maui Redevelopment Agency which is addressing such issues as parking, traffic flow, streetscape and signage.

- A fundraising campaign was launched.

Main Street Hawai'i's first year has been a capacity building effort targeting technical assistance, training and resource development services to help people in these towns learn how they can help themselves. We've discovered that there is a strong commitment from both the public and private sectors to create a viable partnership to make the program work. It will take time, good organizational skills and professional guidance to help reshape the future of small towns. It can work.



David Franzen

Wailuku, Maui



Heritage Councils: “A Future for Our Past”

In September we convened a series of five workshops throughout the state to solicit guidance on how we could best direct our efforts in the years ahead.

The participants represented a wide range of interests from those active in the preservation movement as members of Historic Hawai'i, historical societies and museums to college students and senior citizens. There were representatives of neighborhood boards and community associations, Hawaiian activists and *kupuna*, archaeologists, musicians and dancers, architects, realtors, land developers and representatives of government.

During the workshops, presentations were made to stimulate discussion.

Brainstorming sessions were held to reflect people's priorities for future preservation efforts in their communities and for the entire state.

The results were overwhelming in their level of awareness and in the consensus they reflected.

Priorities were set for statewide efforts:

- Form a coalition of county organizations supporting a statewide umbrella organization.
 - Simplify, clarify, evaluate and enforce existing laws and regulations.
 - Include the environment and natural resources in all preservation/conservation efforts.
- Historic Hawai'i Trustees responded to the recommendations by giving them top consideration as priorities for 1986.

1986 Priorities

LEGISLATION

All levels

Identify and evaluate existing federal, state and county legislation dealing with historic preservation.

County

Provide resource information, guidance and direction for county zoning, land use and planning efforts.

PUBLIC AWARENESS

Establish county Heritage Councils based on recommendations from the “Future for Our Past” (FFOP) workshops. Convene at least two meetings of each to (1) draft a mission statement, identify potential members, organize, set up a communication system and review the FFOP proceedings; (2) identify the top three priorities for action in each county, establish a calendar for action and identify and assign persons/groups to accomplish the action.

EDUCATION

Prioritize

Develop a system for prioritizing sites and structures placed on the National and State Registers of Historic Places. Use the system to prioritize the registered properties in downtown Honolulu. Make the system available to county Heritage Councils to begin rating their county listings.

Train

Plan a training course for members of county Historic District Commissions and Advisory Boards.

MAIN STREET

Raise money to support Main Street.

Complete the organizational phase of Hilo, West Kauai, and Wailuku.

Certify and enroll one O'ahu town into the Main Street Network.

Complete the first edition of Resource Directory.

1985 Financial Statement

STATEMENTS OF ASSETS AND LIABILITIES

(arising from cash transactions)

December 31, 1985

	1985			1984		
	General Operating Funds			General Operating Funds		
	Unrestricted	Restricted	Total	Unrestricted	Restricted	Total
ASSETS						
Cash						
Savings and checking	\$45,006	\$51,298	\$ 96,304	\$ -	\$22,260	\$22,260
Marketable securities—at cost						
United States Treasury bills						
(quoted market price of \$50,000)	-	-	-	47,609	1,129	48,738
Corporate securities						
(approximate market)	2,416	-	2,416	-	-	-
Fixed assets	16,403	-	16,403	12,622	-	12,622
Less accumulated depreciation	5,710	-	5,710	2,991	-	2,991
	10,693	-	10,693	9,631	-	9,631
	<u>\$58,115</u>	<u>\$51,298</u>	<u>\$109,413</u>	<u>\$57,240</u>	<u>\$23,389</u>	<u>\$80,629</u>
LIABILITIES AND FUND BALANCE						
Fund balance	<u>\$58,115</u>	<u>\$51,298</u>	<u>\$109,413</u>	<u>\$57,240</u>	<u>\$23,389</u>	<u>80,629</u>

STATEMENTS OF REVENUES AND EXPENDITURES

	1985			1984		
	General Operating Funds			General Operating Funds		
	Unrestricted	Restricted	Total	Unrestricted	Restricted	Total
Revenues						
Fund-raising activities	\$ 29,644	\$ -	\$ 29,644	\$ 35,739	\$ -	\$ 35,739
Membership dues	106,797	-	106,797	89,421	-	89,421
Contributions	8,327	-	8,327	15,290	-	15,290
Newspaper advertising	5,824	-	5,824	8,152	-	8,152
Preservation projects	-	110,653	110,653	-	24,160	24,160
Public education	13,660	-	13,660	6,906	-	6,906
Interest	8,250	-	8,250	5,260	-	5,260
Dividends	-	-	-	24	-	24
	<u>172,502</u>	<u>110,653</u>	<u>283,155</u>	<u>160,792</u>	<u>24,160</u>	<u>184,952</u>
Expenditures						
Salaries and wages	58,171	-	58,171	65,720	-	65,720
Cost of fund-raising activities	16,334	-	16,334	11,081	-	11,081
Depreciation	2,719	-	2,719	1,684	-	1,684
Insurance	9,006	-	9,006	6,454	-	6,454
Membership	9,822	-	9,822	13,086	-	13,086
Office supplies	4,915	-	4,915	5,187	-	5,187
Postage	4,227	-	4,227	2,861	-	2,861
Preservation projects	-	82,744	82,744	-	12,182	12,182
Professional	3,094	-	3,094	2,961	-	2,961
Public education	45,270	-	45,270	35,403	-	35,403
Rent	7,394	-	7,394	5,450	-	5,450
Repairs and maintenance	1,136	-	1,136	671	-	671
Taxes	5,391	-	5,391	5,287	-	5,287
Telephone	3,867	-	3,867	2,899	-	2,899
Travel	281	-	281	2,063	-	2,063
Unclassified	-	-	-	40	-	40
	<u>171,627</u>	<u>82,744</u>	<u>254,371</u>	<u>160,847</u>	<u>12,182</u>	<u>173,029</u>
EXCESS OF REVENUES OVER EXPENDITURES (EXCESS OF EXPENDITURES OVER REVENUES)	<u>\$ 875</u>	<u>\$ 27,909</u>	<u>\$ 28,784</u>	<u>\$ (55)</u>	<u>\$11,978</u>	<u>\$ 11,923</u>

STATEMENTS OF CHANGES IN FUND BALANCE

	1985			1984		
	General Operating Funds			General Operating Funds		
	Unrestricted	Restricted	Total	Unrestricted	Restricted	Total
Fund balance at beginning of year	\$57,240	\$23,389	\$ 80,629	\$53,426	\$15,280	\$68,706
Excess of revenues over expenditures (excess of expenditures over revenues)	875	27,909	28,784	(55)	11,978	11,923
Transfer of restricted funds to unrestricted funds for purchase of fixed assets	-	-	-	3,869	(3,869)	-
Fund balance at end of year	<u>\$58,115</u>	<u>\$51,298</u>	<u>\$109,413</u>	<u>57,240</u>	<u>\$23,389</u>	<u>\$80,629</u>

The above figures are preliminary pending the completion of our annual audit by Grant Thornton.



The iron gates and fencing fronting the Royal Mausoleum in Nu'uano were originally brought from England in 1867. They received little or no maintenance until 1984 when the Trustees of the Charles R. Bishop Trust commissioned their restoration. The entire structure was restored as accurately as possible to its original condition. It was completely repaired and freshly painted with all finials, spear tips, coat of arms and crowns gilded in 23 carat gold leaf.



In 1979 Thomas D. King, Jr. purchased the historic Kilauea Plantation Manager's house. With the design assistance of Kelsey Maddox-Bell, the home was extensively restored and partially renovated. Carpenters and other laborers from the plantation began construction of the home in 1926 using local materials whenever possible. Living and dining room floors are of inch-thick 'ohi'a and ceiling beams of the lower floor are of imported cedar, both of which remain termite-free.

1986 Preservation Awards

Historic Hawai'i Foundation annually presents awards for outstanding achievement in the "preservation, restoration and interpretation of sites, buildings, architecture, districts and objects of significance in the history and culture of the State of Hawai'i." Those responsible for restoring the Kilauea Plantation Manager's home and the Royal Mausoleum Gates and Fence will receive 1986 Preservation Awards at Historic Hawai'i Foundation's annual meeting on April 19. The Navy Public Works Center at Pearl Harbor will receive a Preservation Commendation. Preservation Certificates will be presented to Mrs. Coila Eade, Mr. Robert H. Gerell and Mrs. Jean Greenwell.

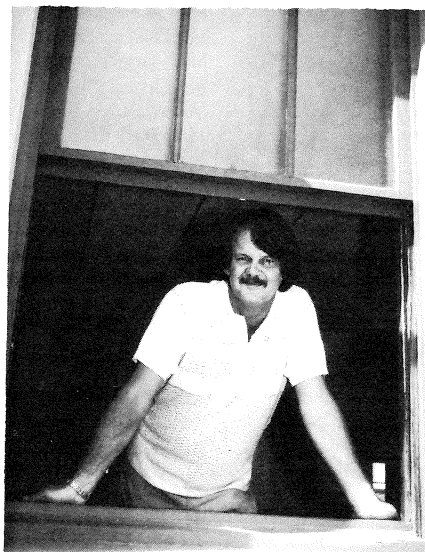


Military housing on Ford Island was originally built in 1922. Thirty-eight of these pre-World War II family quarters still house military families. After 60 years of service, the historic homes were in need of major repairs and renovation. In 1983 a proposal was submitted for the repair and rehabilitation of 33 of the Ford Island family units. The project was completed by the Navy Public Works Center at Pearl Harbor.



Coila Eade is responsible for a series of actions which resulted in the presence of a museum in Hana, Maui. The fact that a community of 900 even boasts of a museum is a tribute to Coila's efforts and leadership. Its existence has inspired residents and tourists to become members and make contributions because of their recognition of the commitment and quality which are clearly reflected in the museum. Coila has been selected to receive a 1986 Preservation Certificate for her contribution to preservation in Hana.

Robert Gerell will receive a 1986 Preservation Certificate for his work in the rehabilitation of historic buildings and sites in Hawai'i. Gerell has been instrumental in rehabilitating many Chinatown structures, including the Mendonca, Tan Sing, Lum Yip Kee, L. Ah Leong, Sumida, King/Kekaulike as well as the Stangenwald and buildings in Koloa, Kaua'i.



In 1976 Jean Greenwell realized the special need to preserve Kona's history as she saw so much of it disappearing before her. She helped found the Kona Historical Society and has dedicated much of the last 10 years to research and collection of Kona's history. This dedication has not only been for the collection of information, but also for the documenting of it. She has spent countless hours doing research at the State Archives, Bishop Museum and Hilo libraries. Her meticulous notes have been invaluable to researchers. For research and sharing of the history of Kona, Hawai'i, she will receive a 1986 Preservation Certificate.

FRIENDS OF HISTORIC HAWAII

A vital part of Historic Hawai'i's work is made possible by the Heritage Associates, a very special group of major donors whose yearly contributions of \$1,000 or more enable us to expand our services and programs at a critical time. Historic Hawai'i is grateful to the following Associates for their generous support:

Mrs. Barbara Cox Anthony
Governor and Mrs. George Ariyoshi
Mr. and Mrs. Alexander S. Atherton
Mr. and Mrs. Roy S. Blackshear
Mr. and Mrs. Wm. Mendel Borthwick, Jr.
Mr. and Mrs. Kenneth F. Brown
Mr. and Mrs. Courtney Burton
Mrs. George R. Carter III
Dr. Ann B. Catts
Dr. John F. Chalmers
Mrs. Dorothea Chandler
Mr. W. D. Child, Jr.
Mr. and Mrs. Sungdai Choi
Mr. and Mrs. Henry B. Clark, Jr.
Capt. & Mrs. Allyn Cole, Jr.
Mr. Richard A. Coons
Mr. and Mrs. Herbert C. Cornuelle
Miss Alicia C. Davies
Mrs. Alan S. Davis
Mrs. Helen D. Dietz
Mr. and Mrs. Herbert E. Dimmitt
Dr. and Mrs. John Henry Felix
Mr. and Mrs. Evarts C. Fox, Jr.
Mr. and Mrs. Robert H. Gerell
Dr. and Mrs. Norman Goldstein
Mr. and Mrs. John T. Goss
Mrs. Louise Guard
Mrs. Ruth K. Hanner
Mr. and Mrs. Joseph W. Hartley, Jr.
Mr. Charles H. Holt
Miss Abigail Kawanakoa
Miss Poomai Kawanakoa
Mr. and Mrs. Alan C. Kay
Mrs. Spencer Leineweber
Dr. Gerrit R. Ludwig
Dr. and Mrs. Tom McMillan
Mrs. Neva McMullan
Mr. and Mrs. Paul L. Minchin

Mr. and Mrs. Nathaniel R. Potter, Jr.
Mr. Rick Ralston
Mrs. Joan Rohlfing
Mr. C. Frederick Schutte
Mr. James C. Shingle
Mr. and Mrs. Allen Stack
Mr. and Mrs. John Stevenson
Mr. and Mrs. Andre Tatibouet
Mr. Edward Tilton, Sr.
Mr. Thurston Twigg-Smith
Mr. Robert T. Watts
Mr. and Mrs. Michael Weight
Dr. Drake W. Will
Mr. Henry A. Zuberano
Mr. E. E. Black, In Memorium

Other individuals contributing to Historic Hawai'i Foundation include:

Contributing

Mr. Edward R. Aotani, AIA
Mr. Kenneth P. Barrow
Mr. and Mrs. John D. Bellinger
Mr. and Mrs. Irwin S. Bickson
Mr. and Mrs. James A. Bier
Mr. and Mrs. David G. Boak
Mrs. Charles Boettcher, II
Mrs. W. Herbert Bretzlaff
Mrs. Elsie Mcg Burke
Dr. Carlene Char
Mr. Michael S. Chu
Col and Mrs. John R. Clifton
Mr. and Mrs. Samuel A. Cooke
Mr. and Mrs. William S. Coonley
Irene W. Croft, Jr.
Mrs. Bayard H. Dillingham
Mr. and Mrs. David L. Dressel
Mr. and Mrs. Charles F. Dubois
Dr. David T. Eith
Mr. and Mrs. Gerald W. Fisher, Jr.
Mr. and Mrs. Andrew Friedlander
Mr. and Mrs. Robert M. Fujimoto
Mrs. Victoria Geist
Ms. June V. Gibson
Mr. James S. Gray
Mr. and Mrs. Richard H. Gray
Mrs. Grace Guslander
Mr. and Mrs. Warren Haight
Mr. and Mrs. Fred Hedemann
Congressman Cecil Heftel
Mr. Will J. Henderson
Mr. Edward J. Hogan

Mr. and Mrs. Robert W. Hufford
Mr. and Mrs. Alan W. Hyman
Mrs. Esther H. Jantzen
Ms. Deborah Jones
Dr. and Mrs. Robert D. Kemble
Mr. Thomas D. King, Jr.
Dr. and Mrs. L. J. Kirkham
Mr. and Mrs. F. W. Klebahn
Mr. J. Clifton Koterba
Mr. Norman Lacayo, AIA
Mrs. Richard C. Latham
Mrs. Doris M. Leach
Mr. and Mrs. Warren K. K. Luke
Mr. and Mrs. Thomas C. H. Lum
Mr. and Mrs. Benjamin L. Marx, Jr.
Mr. George Mason
Dr. and Mrs. George H. Mills
Mrs. George H. Moody
Mrs. Patricia Morris
Mrs. William E. Mussett
Mr. Philip Norris
Mr. and Mrs. George L. Nottingham
John and Mac Padgett
Mr. and Mrs. Charles Page
Mr. W. W. Paty, Jr.
Miss Jacqueline Perry
Mr. Douglas Philpotts
Ms. Mary Philpotts
Ms. Diane J. Plotts
Mr. William S. Richardson
Mrs. W. P. Roth
Miss Mary A. Roulette
Mr. and Mrs. Nathan Sacks
Mrs. Jean W. Scripps
Mr. and Mrs. Louis T. Self
Mr. Charles C. Spalding
Mr. John P. Spierling
Mr. George W. Sumner, Jr.
Mrs. Annalie Tatibouet
Mrs. Charlotte Temple
Mr. and Mrs. Myron Thompson
Mr. and Mrs. Robert Vanek
Mrs. Valma Von Holt
Mr. Jeffrey N. Watanabe
Mr. David Watumull
Mrs. Juliet Rice Wichman
Mr. and Mrs. Leighton J. Wilkie
Dr. and Mrs. William B. Wilson, Jr.
Mr. Donald K. Yamada
Mr. K. Tim Yee

Supporting

Mrs. James J. Ackerman
Mr. and Mrs. Keith E. Adamson
Mrs. Flora C. Atherton

Mrs. D. E. Bahrenburg
Ms. Virginia L. Baird
Mr. Peter D. Baldwin
Mr. Alan C. Beall
Mrs. Florence H. Beard
Mr. and Mrs. Ben H. Bond, Jr.
Mrs. F. W. Broadbent
Mr. and Mrs. Frederick Brossy Jr.
Mr. and Mrs. Alan Lowrey Brown
Mrs. Zadoc W. Brown
Mr. and Mrs. Roy M. Bunn
Mr. H. William Burgess
Mrs. Charles H. Burnett, Jr.
Mr. and Mrs. Colin C. Cameron
Mr. Larry Capellas
Mr. and Mrs. Donn W. Carlsmith
Mr. and Mrs. E. L. Carter
Mr. and Mrs. John C. Cavanagh
Miss Kanoë Cazimero
Mr. Keola Childs
Mr. and Mrs. Mel Choy
Mr. Richard Clifton
Mrs. Harrison R. Cooke
Mr. and Mrs. Joseph P. Cooke, Jr.
Mr. and Mrs. Robert O. Costa
Mr. and Mrs. Don R. Cowell
Mr. Randolph Crossley
Mrs. Joan G. Damon
Mr. and Mrs. Edward J. Doty
Mr. and Mrs. Robert Dyson
Mr. and Mrs. Harold C. Eichelberger
Mr. and Mrs. Wayne E. Ellis
Mrs. Harold R. Erdman
Mr. and Mrs. Dean A. Eyre, Jr.
Mrs. T. N. Fairbanks
Mr. Robert M. Fox, AIA
Mr. and Mrs. James F. Gary
Mr. and Mrs. Martin Gendel
Mr. and Mrs. Donald W. Y. Goo
Mr. and Mrs. Holbrook Goodale
Mr. Robert Bruce Graham, Jr.
Mr. Alvin Grancell
Mr. and Mrs. Sherwood R. H. Greenwell
Mr. Richard W. Gushman, II
Mrs. Douglas E. Guy
Mr. Michael E. Haig
Mr. Willard T. Haraguchi
Mr. and Mrs. Arthur L. Harris
Mr. and Mrs. Donald G. Hasenyager
Mrs. Nancy Hedemann
Mr. and Mrs. Raymond B. Herrick
Mr. and Mrs. James Howard
Mr. and Mrs. Charles W. Hulick

Mr. and Mrs. Donald C. Ingram, Jr.
 Mr. and Mrs. D. A. Jacques
 Ms. Marjorie Irwin James
 Mrs. Cecily F. Johnston
 Mr. and Mrs. J. Robert Judd
 Mr. and Mrs. Ronald Kats
 Dr. W. Philip Kau
 Mr. George H. Kekoolani, Jr.
 Mrs. Garfield King
 Mrs. Howard Lang
 Mrs. E. H. Leavey
 Mrs. Ralph G. Leavitt
 Mr. and Mrs. J. Gordon Lent
 Mr. and Mrs. Richard M. Libbey
 Mr. and Mrs. Carl Lindquist
 Miss Barbara L. Livengood
 Mr. and Mrs. Gene Long
 Mrs. Heather B. MacGregor
 Mrs. Roberta MacNaughton
 Mr. and Mrs. Martin P. Mangan
 Mr. George D. Manning and
 Mr. Hugh McCord
 Mrs. Sarah Ann Martin
 Mr. David E. Matthews
 Mrs. Ann W. McDonald
 Mr. and Mrs. Wade H. McVay
 Mr. Ken Melrose
 Mrs. Valerie L. Mendes
 Mrs. Leon E. Mermod
 Mr. and Mrs. Harry Meyer
 Ms. E. H. Middleton
 Mrs. Frederick C. Moore
 Mr. and Mrs. James F. Morgan, Jr.
 Mr. and Mrs. Stewart Morris
 Mr. Neil Morriss
 Mr. and Mrs. V. W. Newbold
 Mr. and Mrs. Edward A. O'Neill
 Mr. and Mrs. Corey Y.S. Park
 Ms. Nancy Lyman Peacock
 Dr. James Penoff
 Mr. and Mrs. David T. Pietsch, Sr.
 Mr. P. L. Porter
 Miss Julia M. Putnam
 Mr. and Mrs. William F. Quinn
 Dr. and Mrs. G. Manning Richards
 Mr. Hans Riecke, AIA
 Dr. and Mrs. Robert G. Rigler
 Mr. and Mrs. Carlos E. Rivas
 Mr. Russell S. Robinson
 Mr. and Mrs. H. E. Robisch
 Mr. and Mrs. Richard H. Rodby
 Ms. Jean E. Rolles
 Mr. and Mrs. Robert H. Rotz
 Mr. Peter E. Russell
 Mrs. Wallace G. Sanford
 Mrs. F. W. Scholl
 Mr. and Mrs. John Anthony Serrao
 Dr. and Mrs. Arthur Y. Sprague
 Dr. and Mrs. Edward C. Sterling
 Mr. Edwin Stevens
 Mr. and Mrs. E. Grant Story
 Ms. Ann Stubenberg
 Mrs. Philip F. Thayer
 Mrs. Joanne Trotter
 Dr. and Mrs. Garton E. Wall
 Mr. and Mrs. Douglas Weers
 Mrs. Thomas K. White
 Mr. and Mrs. S. D. Whiting
 Mr. Harry A. Whitten
 Mrs. Allen C. Wilcox, Jr.
 Mr. and Mrs. Gaylor H. Wilcox
 Mrs. Virginia Wirtz
 Mr. and Mrs. Robert C. Wo
 Mr. Hei Wai Wong
 Mrs. Heaton L. Wrenn

Family

Dr. and Mrs. Milton Ackerman
 Mr. and Mrs. Charles W. Adcock

Mr. and Mrs. Davis E. Adler
 Mr. Roy K. Alameida
 Mr. and Mrs. Henry A. Alexander
 Mr. and Mrs. Alden I. Avery
 Capt. and Mrs. W. Bruce Althoff
 Mr. and Mrs. Andrew Andersen, Jr.
 Mr. and Mrs. Edward P. Anderson
 Mr. and Mrs. R. Alex Anderson
 Ms. Janet L. C. Atkins
 Mr. and Mrs. W. G. Baldwin
 Mr. Waldron Barrere
 Mr. and Mrs. C. B. Basler
 RAdm. and Mrs. E. H. Batcheller
 Mr. and Mrs. George H. Batt
 Mr. and Mrs. Waldemar F. Bechert
 Brig. Gen. and Mrs. Clare E. Beck
 Mr. and Mrs. Ronald K. Beers
 Mr. and Mrs. Ben B. Beeson
 Mr. and Mrs. Joseph Bender
 Mr. and Mrs. Harlan F. Benner
 Mrs. Joy N. Black
 Dr. Kekuni Blaisdell
 Mr. and Mrs. Peter Blumberg
 Mr. and Mrs. J. R. Bolner
 Mr. and Mrs. Richard H. Booth
 Mr. and Mrs. C. B. Bostwick
 Mr. and Mrs. Waldo Bowman
 Mr. and Mrs. Sevath E. Boyum
 Mr. and Mrs. J. C. H. Brown
 Mr. and Mrs. Henry C. Burgess
 Mr. and Mrs. Reynolds G. Burkland
 Mr. and Mrs. Gordon Burton
 Dr. and Mrs. Oswald A. Bushnell
 Mr. and Mrs. Vance C. Cannon
 Shirley and Virginia Cartwright
 Mr. and Mrs. Richard J. Chalmers
 Mr. and Mrs. E. R. Champion
 Mr. and Mrs. Wayne S. Chinen
 Mr. and Mrs. Philip H. Ching
 Mr. and Mrs. Robert S. Ching
 Dr. and Mrs. William T. Cleghorn
 Mr. and Mrs. Hal Connable
 Mr. and Mrs. Terry Conner
 Mr. and Mrs. John H. Connors
 Mr. James Conti
 RAdm. and Mrs. Ralph E. Cook
 Capt. and Mrs. James L. Cook, Jr.
 Mr. and Mrs. Warner Cosgrove, Jr.
 Captain and Mrs. William Coste
 Mr. and Mrs. Richard H. Cox
 Mr. and Mrs. Doak C. Cox
 Mr. and Mrs. George W. Craft
 Mr. and Mrs. Anthony B. Craven
 Mr. and Mrs. C. Wilbur Crow
 Mr. and Mrs. R. Dougal Crowe
 Mr. and Mrs. Thomas M. Culbertson
 Mr. Philip H. Cummings
 Mr. and Mrs. David W. Curtis
 Mr. and Mrs. Theodore Dabagh
 Mr. and Mrs. Wilfred D. Darling
 Dr. and Mrs. Harry K. Davis
 Mr. and Mrs. S. B. Davis
 Mr. and Mrs. J. Arthur de Boer
 Mr. and Mrs. Ralph De Mars
 Mr. and Mrs. Duncan F. Dempster
 Mr. and Mrs. Adolph H. Desha
 Mr. and Mrs. John Dilks
 Mr. and Mrs. John P. Dinmore
 Mr. and Mrs. Wales S. Dixon
 Mr. and Mrs. Rene Dold
 Mr. and Mrs. Kevin Dooley
 Mr. and Mrs. Wayne E. Duncan
 Medford and Masu Dyer
 Mr. and Mrs. W. F. Ehrman
 Mr. and Mrs. Henry Eng
 Mr. and Mrs. Isami Enomoto
 David and Faith Evans
 Dr. and Mrs. Evan C. Evans, III
 Mr. and Mrs. Michael A. Faye

Dr. and Mrs. David Fergusson
 Mr. and Mrs. Marvin Fialco
 Mr. and Mrs. James M. Fiore
 Mrs. Gerald W. Fisher
 Mr. Ralph Fisher
 Mr. Kenneth Fiske
 Joel and Vasant Fithian
 RAdm. and Mrs. Francis E. Fleck
 Mr. and Mrs. James H. Fleming
 Mr. and Mrs. L. Richard Fried
 Capt. and Mrs. Frank L. Fullaway
 Mr. and Mrs. Frederick H. Furer
 Mr. and Mrs. Alvin Fuse
 Mr. and Mrs. Earl G. Galloway
 Colonel and Mrs. Ron Garten
 Mrs. Charles C. Gates
 Mr. and Mrs. Frank Geiger
 Mr. and Mrs. Theodore W. Gibson
 Ms. Cynthia Gillette-Wenner
 Mr. and Mrs. J. Gillmar
 Mr. and Mrs. Joseph A. Gilman, III
 Mr. and Mrs. Gregory C. Goetz
 Mr. and Mrs. Robert S. Gordon
 Mr. and Mrs. Robert B. Graham, Sr.
 Mr. and Mrs. William A. Grant
 Mr. and Mrs. Tom Greene
 Dr. and Mrs. W. H. Gulledge
 Mr. and Mrs. Windsor G. Hackler
 Mr. and Mrs. Michael A. Han
 Mr. and Mrs. Andy R. Harada
 Mr. and Mrs. Rodney Haraguchi
 Mr. and Mrs. Edward A. Harger
 Mr. and Mrs. Mark H. Hastert
 Dr. and Mrs. J. C. Hathaway
 Mr. and Mrs. Erik Hazelhoff
 Mr. and Mrs. James F. Helmer
 Sen. and Mrs. Richard Henderson
 Mr. and Mrs. George E. Heneghan
 Mr. and Mrs. Robert N. Herkes
 Mr. and Mrs. Raymond B. Herrick
 Mr. Robert L. Hind, Jr.
 Mr. and Mrs. Melvin M. Hirose
 Mr. and Mrs. William P. Hodgins
 Mr. and Mrs. W. H. Hoffstot, Jr.
 Mr. and Mrs. Herb Hong
 Mr. and Mrs. John Hoogs
 Mr. and Mrs. Glenn Horiuchi
 Mr. and Mrs. Arthur G. Horner, Jr.
 Mr. and Mrs. R. A. Horst
 Dr. and Mrs. Milton M. Howell
 Mr. and Mrs. Don R. Huddleston
 Mr. and Mrs. Barry S. Hudson
 Dr. and Mrs. Joseph F. Hughes
 Mr. and Mrs. Robert H. Hughes
 Mr. and Mrs. Frank W. Hustace, Jr.
 Adm. and Mrs. John J. Hyland
 Mr. and Mrs. Dennis Isenberg
 Mr. and Mrs. Bruce Jackson
 Mr. and Mrs. Donald D. Johnson
 Mr. and Mrs. Herbert R. Jordan
 Dr. and Mrs. Charles S. Judd, Jr.
 Mr. and Mrs. Lloyd C. Kaapana
 Mr. and Mrs. Edward K. Kawanakoa
 Colonel and Mrs. Charles J. Keever
 Mr. and Mrs. Paul Kekuwa
 Mr. and Mrs. Ron Kent
 Jerry and Debby Kermode
 Mr. and Mrs. Albert Kerry
 Mr. and Mrs. Fred W. Koch
 Mr. and Mrs. Nolan J. Kramer
 Mrs. Phyllis Kunimura
 Mr. and Mrs. Frank Kunz
 Mr. and Mrs. Peter L'Orange
 Mr. and Mrs. Thomas K. Lalakea
 Mr. and Mrs. Evan C. Lambert
 Mr. and Mrs. Tambi Larsen
 Mr. and Mrs. Bay Stewart Leber
 Dr. and Mrs. Frank Lee
 Mr. and Mrs. Gordon Lee

Mr. and Mrs. John S. W. Lee
 Mrs. Katherine B. Lee
 Mr. and Mrs. Peter A. Lee
 Mr. and Mrs. Douglas J. Le Grande
 Col. and Mrs. Thomas M. Leineweber
 Lt. Col. and Mrs. M. L. Lemon, Jr.
 Mrs. Priscilla H. M. Leong
 Mr. and Mrs. Aaron Levine
 Mr. and Mrs. Stuart Lillico
 Mr. and Mrs. William H. Livingston
 Mr. and Mrs. Frank R. Loney
 Dr. and Mrs. John J. Lowrey
 Mr. and Mrs. Robert S. Lowrey
 Dr. and Mrs. Kwong Lum
 Mr. and Mrs. Bruce S. MacBride
 Richard and Judie Malmgren
 RAdm. and Mrs. G. Patrick March
 Mr. and Mrs. Stephen Marvin
 Mr. and Mrs. James T. McClellan
 Mr. and Mrs. Stewart McCombs
 Mr. and Mrs. Donald R. McConoughey
 Mr. and Mrs. James McCutcheon
 Mr. and Mrs. George S. McDowney
 Mr. and Mrs. Bruce McEwan
 Mr. and Mrs. Jack G. McGuire
 Col. S. K. and Sen. Mary-Jane McMurdo
 Mr. and Mrs. Gordon Mew
 Dean and Mrs. Jerrold M. Michael
 Mr. and Mrs. Robert R. Midkiff
 Mr. and Mrs. Allen Miller
 Mr. and Mrs. Arthur Dale Miller
 Mr. and Mrs. Eric McD Moir
 Mr. and Mrs. Willson C. Moore, Jr.
 Mrs. Francis S. Morgan
 Mr. and Mrs. Fred Mosher
 Mr. and Mrs. Stephen V. Nahl
 Mr. and Mrs. Leon Nedbalek
 Mr. and Mrs. Lyle E. Nelson
 RAdm. and Mrs. William T. Nelson
 Capt. and Mrs. Richard J. Nesbitt
 Mr. and Mrs. John F. Nielsen
 Dr. and Mrs. Victor J. Niiranen
 Mr. and Mrs. Katashi Nose
 Dr. and Mrs. E. J. O'Shaughnessy
 Mr. and Mrs. Emil Offer
 Mr. and Mrs. Edwin T. Okada
 Miss Sue Oliver
 Mr. and Mrs. Vladimir Ossipoff
 Mr. and Mrs. R. Bryan Owen
 Mr. and Mrs. Christopher Pablo
 Mr. and Mrs. Nicholas J. Palmer
 Mr. and Mrs. Rudolph E. Papst
 Mr. and Mrs. Irvine H. Paris
 Mr. and Mrs. Edward J. Parnell
 Mr. and Mrs. James R. Pavele
 Mr. and Mrs. Charles Pedesky
 Mr. and Mrs. James C. Pell
 Mr. and Mrs. Gavin J. Pemberton
 Judge and Mrs. Martin Pence
 Susan and Peter Percy
 RAdm. and Mrs. H. S. Persons
 Mr. and Mrs. Donald C. Porter
 Mr. and Mrs. Hebben Porteus
 Mr. and Mrs. Robert H. Prahl
 Mr. and Mrs. Howard Prettyman
 Mr. and Mrs. David Puder
 Mrs. Robert A. Purdue
 Mrs. Robert Purvis
 Capt. Samuel M. Randall
 Mr. and Mrs. Henry Rice
 Mr. and Mrs. Edward F. Robinson
 Mr. and Mrs. Charles M. Rolison
 Mr. and Mrs. Iain M. Ross
 Beverly and Mason Rothenborg
 Mr. and Mrs. Michael Ryan
 Mr. and Mrs. Raymond L. Salley
 Mr. and Mrs. Jim Samuelson
 Mr. and Mrs. R. V. Schneider
 Dr. and Mrs. Niall M. Scully

Col. and Mrs. Dale S. Seeds
 Mr. and Mrs. Paul Seematter
 Drs. Jack and Diana Seto
 Mr. and Mrs. Wilmot L. S. Seto
 Harold M. Sexton, M.D.
 Mr. and Mrs. Lloyd Sexton
 Mr. and Mrs. Barry Shain
 Dr. Ben Shenson
 Mr. Seymour W. Shingle
 Mr. and Mrs. Clarence R. Short
 Dr. and Mrs. Albert Simone
 Mr. and Mrs. John Simpson
 Mr. and Mrs. Joseph N. Sirois
 Mr. and Mrs. G. C. Slain
 Mr. and Mrs. H. Sloggett, Sr.
 Jane and Jerry Smith
 Mr. and Mrs. N. K. Smith
 Mr. and Mrs. Peter S. Smith
 Mr. and Mrs. Russell L. Smith, Jr.
 RAdm. and Mrs. Spencer Smith
 LCDR. and Mrs. William R. H. Smith
 Mr. and Mrs. Carl Sorem
 Dr. and Mrs. John Spangler
 Mr. and Mrs. Alexander Spoehr
 Dr. and Mrs. George W. Starbuck
 Mr. and Mrs. Campbell W. Stevenson
 Mr. and Mrs. Stanley A. Styan
 Mr. and Mrs. Charles R. Sutton
 Mr. and Mrs. James Takano
 Dr. and Mrs. Paul Y. Tamura
 Mr. and Mrs. Carl L. Thoene, Jr.
 Mr. and Mrs. Lowell Thomas, Jr.
 Mr. James and Ms. Barbara Thompson
 Capt. and Mrs. Lewis G. Timberlake
 Dr. and Mrs. P. Quentin Tomich
 Col. and Mrs. R. H. Towell
 Miss Gladys Traut
 Mr. and Mrs. Gordon Tribble
 Mr. and Mrs. Albert F. Turner
 Mr. and Mrs. James Turner
 Suzanne L. Varady
 Dr. and Mrs. Raymond Vaught
 Capt. and Mrs. Dimitri J. Vellis
 Mr. and Mrs. Carl C. Vetter
 Mr. and Mrs. Wendell Wade
 Mrs. H. Alexander Walker
 Mr. and Mrs. G. Herbert Walther
 Mr. and Mrs. K. Watanabe
 Mr. and Mrs. Joseph R. Weldon
 Mr. and Mrs. Marshall B. Wheeler
 Mr. and Mrs. Fred R. White
 Mr. and Mrs. Stratford L. Whiting
 Capt. and Mrs. D. B. Wikeen
 Mr. and Mrs. James G. Wilbert
 Mr. and Mrs. John E. Wilcox
 Mr. and Mrs. Clark C. Williams
 Mr. and Mrs. Gary Winterbottom
 Mr. and Mrs. James T. Witten
 Mr. and Mrs. James Woolaway
 Dr. and Mrs. Dale Wortham
 Mr. and Mrs. Norman J. Wright
 Mr. and Mrs. A. James Wriston, Jr.
 Mr. and Mrs. Dexter Yamada
 Mr. and Mrs. Paul T. Yardley
 Mr. and Mrs. John C. York
 Dr. and Mrs. Martin H. Zais

Ms. Elizabeth G. Alexander
 Mr. John Gregg Allerton
 Mrs. Barbara Allin
 Mr. John S. Allin
 Mr. Lawrence Allman
 Ms. Paulyne Anakalea
 Mrs. Marvin J. Anderson
 Mr. John Andrews
 Mr. Lowell Angell
 Mr. Donald H. Angus
 Miss Ellie Arden
 Mrs. June M. Ardolino
 Arizona Memorial Museum
 Library
 Mrs. Elizabeth C. H. Armitage
 Mrs. Inez Ashdown
 Mr. Clinton Ashford
 Mr. Frank Atherton
 Mrs. Charles W. Atkinson
 Mrs. Lindsley Austin
 Mrs. Patricia A. Avery
 Mr. Ronald L. Baers
 Mr. John A. Baker, Jr.
 Mr. Kent A. Baker
 Baldwin High School
 Mrs. Edward H. K. Baldwin
 Mrs. Watson Ballentyne
 Miss Nancy Bannick
 Mrs. James L. Banning
 Mr. Lowell B. Barnhart, ASID
 Edyth J. Bassett
 Miss Carol A. Beadle
 Ms. Betty Beggs
 Mrs. Gracia R. Bell
 Mr. Gerard Bergh
 Miss Kathryn Beveridge
 Miss Beatrice E. Billings
 Mrs. Thomas B. Birtley
 Mrs. William D. Bisgard
 Mr. Charles M. Black
 Ms. Cynthia G. Blackwell
 Mrs. W. Roger Booth
 Mr. Vance Borland, Jr., ASID
 Mr. John R. Bowie, AIA
 Mrs. J. P. Bowman
 Mr. Kent Bowman
 Mrs. Elizabeth S. Bowyer
 Miss Lindy Boyes
 Mrs. Elizabeth Boynton
 Mrs. Gordon W. Bradley
 Mr. Leroy Brandon
 Mrs. Phyllis E. Brasser
 Ms. Teresa Bratakos
 Brigham Young University—
 Hawai'i Campus
 Miss Maurine O. Brinegar
 Mrs. Dianne M. Brogden
 Mr. D. Brown
 Mrs. Ward W. Brown
 Miss Helen L. Brugos
 Ms. Barbara Bryan
 Mrs. Elizabeth Buck
 Mrs. Eva Budar
 Mr. James C. Bull
 Mr. C. E. S. Burns, Jr.
 Ms. Pamela Burns
 Mr. Henry W. Buscher
 Mr. W. M. Bush
 Mr. Kevin J. Cagari
 Mrs. Kathleen A. Callaghan
 Prof. David L. Callies
 Mrs. Alexander Cameron
 Mrs. J. Walter Cameron
 Mrs. Archie C. Camp
 Mr. Donald C. Camp
 Mrs. James S. Campbell
 Mrs. Robert L. Campbell
 Mrs. Robert W. Campbell
 Mr. Richard M. Candee

Mrs. Hilda D. Cannon
 Mrs. George G. Cantlay
 Ms. Mitsue Cook Carlson
 Mrs. William L. Carpenter
 Mrs. Eileen Carson
 Mrs. Lorraine T. Carson
 Mrs. A. Hartwell Carter
 Mrs. H. Shaw Carter
 Mrs. William B. Case
 Mrs. Kathleen L. Casil
 Mr. Paul R. Cassidy
 Ms. Momi Cazimero
 Mrs. Wiona H. Chaney
 Miss Pamela L. Chang
 Mr. Philip W. T. Chang
 Dr. Helen Chapin
 Mr. Murray Chapman
 Ms. Betty Charro
 Mr. Archie Chatterley
 Mrs. Louise O'Connor Cheeley
 Mr. James A. Chiddix
 Ms. Clarice Chinen
 Mrs. Cathy Chinen
 Mr. Francis W. O. Chock
 Mr. Kenneth D. H. Chong
 Mr. Daniel Choy
 Mrs. Ivanelle K. Choy
 Mrs. Robert H. Christy
 Mr. Al Chun
 Mr. Alan W. C. Chun
 Mrs. Gordon P. Chung-Hoon
 Mrs. Bernard A. Clarey
 Mrs. Athalie R. Clarke
 Mrs. Lori Claussen
 Mrs. A. L. Claytor
 Dr. Paul L. Cleghorn
 Dr. Myron C. Cole
 Mr. Jesse C. Conde'
 Mrs. Charles M. Cooke, III
 Mrs. Robert Cooke
 Ms. Merry Lee Corwin
 Ms. M. Creech
 Ms. Dee M. Crowell, AIA
 Miss Sandra Crowell
 Dr. Charles C. Custer
 Mr. C. F. Damon, Jr.
 Mr. Gordon H. Damon
 Mr. Richard C. Damon
 Mrs. Margaret K. Daniel
 Mr. Mark S. Davis
 Mrs. Donald A. Dean
 Mrs. Susan Desjarlais
 Mr. Philip J. Deters
 Mr. J. Nick Detor
 Mr. William C. Deutscher
 Ms. Jean Dickinson
 Mrs. Carolyn Dixon
 Ms. Dorothy B. Douthit
 Mr. Peter G. Drewliner
 Mrs. Pamela Duarte
 Mrs. Hazel K. Dukelow
 Mr. James R. Dunlop
 Ms. Nancy L. Dunn
 Ms. Gretchen B. Duplanty
 Mrs. Elbridge A. Durant
 Mrs. Karen L. Easterling
 Ms. B. Tseng Ecke
 Mrs. Marjorie P. Edel
 Mrs. Patricia H. Edmondson
 Mr. Bill Edwards
 Ms. Sally H. Edwards
 Mr. John C. Elliot
 Mr. Gary R. Endres
 Ms. Patricia G. Engelhard
 Mrs. Mary T. English
 Miss Dorothy M. Evans
 B. M. Eveleth, M. D.
 Mr. Tom Fanning, AIA
 Ms. Welcome S. Fawcett

Mrs. Barbara C. Faye
 Ms. Margaret L. Faye
 Ms. Lynn Fennerty
 Mr. John E. Finney
 Ms. Holly A. Fiocca
 Ms. Sue Patten Fitzgerald
 Mrs. Mary I. Floyd
 Mr. Thomas M. Foley
 Mrs. Virginia Fontaine
 Mrs. G. B. Formans
 Mr. Patrick Foster
 Mrs. Evarts C. Fox
 Ms. Mary A. Fox
 Mrs. Jean Moores Frank
 Miss Judith W. Franz
 David Franzen
 Mrs. Dorothy Frasure
 Mrs. William Friedl
 Mrs. Ethel K. Fujioka
 Ms. Jane Wyatt Fullerton
 Mr. Alan Furukawa
 The Gallery, Ltd.
 Mr. Walter F. Garcia
 Mr. Taketoshi Gibo
 Ms. Patsy L. Gibson
 Lorrin T. Gill
 Ms. Stanley E. Gillmar
 Mr. Richard A. Girtton, Jr.
 Mrs. Amory Goddard
 Ms. Lela Goodell
 Mrs. Betty Gordon
 Miss Bonnie Sue Graham
 Ms. Clarice M. O. Graham
 Mr. Joe G. Grant
 Mrs. Patricia O. Greenwell
 Mr. Richard A. Greer
 Sister Francine Gries
 Mrs. Maylien W. Grosjean
 Miss Dorine S. Haglund
 Mrs. W. Howard Haines
 Mr. Philip D. Haisley, Jr.
 Ms. Kathleen "Chip" Haley
 Dr. Joel Hamilton
 Mrs. Puanani Hanchett
 Mrs. Charles W. Hancock, Jr.
 Mrs. Paula E. Harper
 Mr. George P. Harris
 Mrs. Eva R. Hart
 Mrs. Fritz Hart
 Miss Nellie M. Hartman
 Mrs. John E. F. Hassell
 Ms. Constance Hastert
 Hawaii Army Museum Society
 Hawaii State Library
 Mr. John M. Hayakawa
 Mr. S. M. Hayamoto
 Mrs. Joanne Heim
 Mr. Larry E. Helber
 Mr. Philip Hema
 Mrs. Margaret M. Hendrie
 Mrs. Francis E. Henry IV
 Mrs. Terry Hickson
 Mrs. William L. Higdon
 Mr. Calvin Higuchi
 Mr. Lawson T. Hill
 Mrs. Carolyn S. Hind
 Mrs. Irene Hinkley
 Miss Asa Hinochi
 Historic Sites Section
 Dr. William J. Hoe
 Mr. John Richard Hofmann, Jr.
 Mrs. Lois L. Holcomb
 Mrs. Allison A. Holland
 Mr. Alan S. Holzman
 Dr. Robert J. Hommon
 Honokaa District Development
 Council
 Mr. Ralph C. Hook, Jr.

Individual

Dr. Veneeta Acson
 Miss Christie T. Adams
 Mr. Norman C. Adams
 Ms. Lesley Agard
 Mrs. Velma C. Akinaka
 Capt. Robert H. Albert
 Mrs. Claude C. Albritton, Jr.
 Mr. Robert Alder
 Mrs. Maridell Alexander

Ms. Pegge Hopper
 Mr. Bernhard L. Hormann
 Ms. Elizabeth B. Howard
 Mr. Thomas P. Huber
 Ms. Jeanne L. Hughes
 Mrs. Robert E. Huntzinger
 Mrs. Harry J. Hutchens
 Ms. A. Miyo Ichijo
 Mrs. Carole M. Ikeda
 Mr. Goro Inaba
 Lt. Col. James K. Iwamura
 Ms. Yvonne Izu
 Mr. James B. Jacobs
 Mrs. Eleanor W. Jacobsen
 Mr. Ted James
 Mrs. R. Gordon Jamieson
 Mr. William B. Jamieson
 Mr. J. Fred Janssen
 Mr. Robert Jay
 Mr. John Jenkins
 Mr. Gordon L. Johnson, Jr.
 The Junior League of Honolulu, Inc.
 Joan Kagawa
 Mr. Ernest K. Kai
 Mr. Yasuto Kaihara
 Mrs. Robert S. Kalison
 Ms. Marge S. Kam
 Mr. Eddie Kamae
 The Kamehameha Schools
 Mr. Gerald Kato
 Mrs. Ruth T. Katsunuma
 Ms. Karen E. Kawamoto
 Miss Diane Kawauchi
 Mrs. Gene Kay
 Mrs. Jalna S. Keala
 Mr. Gard Kealoha
 Mrs. Liz Keller
 Mrs. George L. Kellerman
 Mr. Joseph Kennedy
 H. K. Bruss Keppeler
 Mrs. Barbara H. Kerbox
 Miss Alice Kiewit
 Mr. Richard H. King
 Mrs. Mary Joe Kinnison
 Ms. Audrey E. Kitagawa
 Mr. and Mrs. Leslie Kiyabu
 Mrs. F. Willard Knapp
 Mrs. Barbara Kneisley
 Mr. Victor Kobayashi
 Mr. Robert M. Kohr
 Mrs. Steven J. Kolar
 Kona Historical Society
 Ms. Betty Krauss
 Ms. Kathi Kreinik
 Mr. Gaylord Kubota
 Mr. Alton Kuiuoka
 Mrs. Sharon Kupfer
 Miss Harriet Y. Kuwamoto
 Mrs. J. R. Laidlaw
 Mrs. Ardith C. Lam
 Mrs. Evelyn Lance
 Mr. Edward B. K. Lapsley
 Mr. Herman Larsgaard
 Helen Rebecca Larson
 Ms. Janice Lau
 Miss Teresa Law
 Mrs. Grace Mary Lawson
 Mrs. Constance B. Lawyer
 Dr. and Mrs. Frank Lee
 Mr. Van Lee
 Mrs. Victoria Lee
 Mrs. Ranita R. LeGrande
 Mrs. Melville L. Lemon
 Mr. Shek Pan Leong
 Rep. Andrew D. Levin
 Mrs. Dudley C. Lewis
 Ms. Judy Lindeman
 Jocelyn Linnekin
 Mrs. Jane Lipp

Rep. Michael Liu
 Mr. Dennis Lock
 Mr. Tom Loffman
 Mr. Mark D. Lofstrom
 Mr. John E. Loomis
 Miss Christina R. N. Lothian
 Mrs. Beatrice P. Lovell
 Ms. Cathy M. Lowder
 Mr. James C. Luckey
 Ms. Cynthia J. Luis
 Mr. Albert W. H. Lum
 Mr. Benjamin Lum
 Mr. James B. Tek Lum
 Mr. Douglas P. Luna
 Mrs. William B. Lupton
 Mr. Orlando H. Lyman
 Mr. Samuel A. B. Lyons
 Mr. Stephen H. MacMillan
 Mr. Douglas Madden
 Mr. Kelsey Maddox-Bell
 Mrs. Constance R. Major
 Mrs. Alvin I. Malstrom
 Ms. Janet L. Mandrell
 Mr. Michael J. Marks
 Mr. Pete Martinez
 Rep. Barbara C. Marumoto
 Mr. Glenn E. Mason
 Maui Historical Society
 Mr. Stanley K. May
 Ms. Eunice McCain
 Mrs. James McCall
 Mrs. Vern I. McCarthy, Sr.
 Mrs. William Wood McCarthy
 Mrs. W. C. McDermid
 Mr. Reese McDougall
 Mr. Morton McGinley
 Mrs. Elizabeth May McHaney
 Mrs. Beverly H. McKeague
 Mrs. Peter W. McKenney
 Mrs. Nancy I. McMullan
 Dr. and Mrs. Philip I. McNamee
 Mr. Jeffrey Mermel
 Mrs. Kathy Merrill
 Ms. Vicki Merritt
 Ms. Pearle Meserve
 Mr. Richard J. Meyer
 Mrs. Wm. C. Meyer
 Mrs. Jeanne N. Michael
 Mrs. W. R. Miller
 Mr. Gregory A. Mills
 Mrs. Charline Mitchell
 Ms. Muffy Mitchell
 Mrs. Ko Miyataki
 Mrs. W. W. G. Moir
 Ms. Alexis Montgomery
 Mrs. Francis R. Montgomery
 Mr. Ross W. Moody
 Mr. H. Brian Moore
 Miss Virginia Moore
 Mrs. Arthur M. Moran
 Mrs. Edward J. Morgan
 Mr. John A. Morris
 Susan Moss Interiors
 Ms. Nancy A. Mower
 Miss Ruth L. Munro
 Brig. Gen. F. P. Munson
 Mrs. Douglas Murphy
 Mr. Jim Nabors
 Mr. Ralston H. Nagata
 Ms. Marilyn Nagel
 Ms. Genevieve A. Nahulu
 Bishop Dwight R. Nakamura
 Mrs. Juliette Nakashima
 Mr. Solomon K. Naone
 Mrs. Mitchell A. Nasser
 Mr. Brian Nelson
 Mrs. Herman D. Nichols
 Miss Diane Nielsen
 Mrs. Anne W. Noble

Mrs. Annabelle Nobriga
 Mrs. Joyce Noda
 Mrs. William E. Norcross
 Mrs. Robert A. Nordyke
 Mrs. William R. Norwood
 Miss Nancy Nott
 Ms. Mary Lei Nowell
 Mrs. Diane Offord
 Dennis M. Ogawa, Ph. D.
 Mr. Ray I. Okimoto
 Mr. Shungo Okubo
 Mr. Robert E. Oliver, III
 Mr. Susumu Ono
 Dr. Vincent A. Onorato
 Oral History Project
 Mrs. Anna Ordenstein
 Mrs. Otto Orenstein
 Miss Janice Owara
 Ms. Luana Kuhns Pablo
 Pacific Fleet Sub. Memorial tion
 Ms. Penny Pagliaro
 Mrs. Mabel F. Paxton
 Mr. Charles Peacock
 Ms. Patricia C. Peacock
 Mrs. Leilani Peale
 Mrs. Eugenia L. Pearse
 Mr. James Pearson
 Mr. Vernon P. Peck
 Mr. David Penhallow
 Mr. Heine N. Peters
 Mrs. Carol L. Phillips
 Ms. Dorothy C. Phillips
 Ms. Connie Pickett
 Mr. LaRue W. Piercy
 Mrs. Charles J. Pietsch, Jr.
 Mr. Richard Pollock
 Miss Cecilia Ponte
 Mr. Gordon Potter
 Mr. James Hugh Powers
 Mr. David W. Pratt
 Mrs. Dora B. Pratt
 Miss Joan C. Pratt
 Ms. Lenore M. Prehler
 Mr. Glenn Preus
 Mrs. Heidi Girtton Price
 Kulani Purdy
 Ms. Nanette Purnell
 Mrs. William L. Pyle
 Ms. Barbara M. Quinlan
 Mrs. Walter B. Quisenberry, Jr.
 Mr. Rick Rainalter
 Mr. Robert A. Ramsay
 Mrs. M. L. Randolph
 Ms. Susan Rathborne
 Real Estate Works Hawaii, Inc.
 Mr. Carl L. Reber
 Ms. Donna B. Reber
 Ms. Rosemary Reder
 J. I. F. Reppun, M.D.
 Mr. G. Jean Richards
 Ms. Terri Richardson
 Mrs. Loretta Richert
 Mr. Barnes Riznik
 Mrs. Barbara Kahanamoku Robello
 Mrs. Kate Roberts
 Ms. Sherry Robinson
 Mrs. Maxine Robson
 Mr. Charles O. Rogers
 Mr. Jack M. Rolls, Sr.
 Dr. Roger G. Rose
 Mrs. T. J. Roseberry
 Mrs. Eve Rosen
 Dr. Paul H. Rosendahl
 Mrs. Margaret D. Ross
 Mrs. Jamie N. Runnells
 Mr. J. Ward Russell
 Mr. Steve Salis
 Mr. Frank Salmoiraghi
 Mrs. Amy E. Sato

Mrs. Beatrice N. Savage
 J. H. Scaff, Jr. M.D.
 Mr. Kevin Scahill
 Mrs. Geraldine Hyde Schipper
 Mr. Robert C. Schmitt
 Mrs. Frances Schuman
 Mr. L. W. Schutz
 Mrs. Malia Schwartz-Blokker
 Dorothy Scott
 Ms. Marjorie B. Scott
 Mr. Alan H. Shattuck
 Miss Phyllis N. T. Shea
 Ms. Alice Shelly, FCSI
 Mr. Robert J. Sherwood
 Mr. C. Addison Shipman
 Ms. Sandy Shoffeitt
 Mr. Brian J. Shuckburgh
 Mrs. Sindee Sieber-Remenih
 Ms. Arianna Simonics
 Mrs. Frederick Simpich, Jr.
 Mr. Sandy Sims
 Miss Margaret E. Sinclair
 Miss Miriam E. Sinclair
 Mr. Mike Sitich
 Dr. Bart Smith, D.C.
 Ms. Diane E. Smith
 Mrs. J. Don Smith
 Ms. Jenny R. Smith
 Ms. Linda J. Smith
 Mrs. William O. Smith
 Mr. Sidney E. Snyder, Jr.
 Mr. Lloyd J. Soehner
 Ms. Stephany L. Sofos
 Mr. S. Steven Sofos
 Ms. Linn Sol
 Mr. Walter Southward
 Mrs. John H. Southworth
 Mr. David Sox
 Mrs. Patt R. Spencer
 Mr. Cornelius F. Spillane
 Ms. Elyse Sporkin
 Mrs. Marilyn Stassen-McLaughlin
 Mrs. Herbert Stecker
 Miss Ann Stegmaier
 Mrs. Marion L. Steinhauer
 Mr. Ross W. Stephenson
 Mrs. Marquis Stevens
 Mrs. Jane Stevenson
 Miss Alice A. Stewart
 Mr. Chuck Stewart
 Mr. Michael Stick
 Mr. William N. Still, Jr.
 Mrs. Paulette Stone
 Mr. Kenneth K. A. Stotler
 Mrs. Linda Streitfeld
 Mrs. Harold J. Stukey
 Mrs. Richard L. Summers
 Mrs. Alice Suyeoka
 Dr. F. K. Sylva
 Ms. Ruth Tabrah
 Miss Chieko Tachihata
 Mr. Gerald Takano
 Floyd K. Takeuchi
 Ms. Chiyeko Takitani
 Mrs. George Taniguchi
 Mr. Tony Taniguchi
 Ms. Jane A. Terry
 Mr. Albert Teruya
 Mrs. Barbara J. Thurston
 Mrs. Barbara Tilley
 Mr. and Mrs. Allen Ting, III
 Mrs. Joseph Z. Todd
 Mr. Donald H. Tokunaga
 Mr. Benjamin T. Torigoe
 Mr. James Tracz
 Mrs. Barbara K. Trens
 Mrs. C. W. Trexler
 Mrs. Genevieve F. Trout
 Dr. and Mrs. Jerome L. Tucker

Mrs. Farrant L. Turner
 Mr. Karl S. Ulrich
 Mrs. Thomas Unger
 Mrs. Lillian H. Upchurch
 Ms. Irina L. Urba
 Mr. Ernest Uu
 Mr. Robert E. Van Dyke
 Mr. Edward Vangorter
 Mrs. Herbert G. Van Orden
 Mrs. J. Alexander Veech
 Miss Puamohala Vidinha
 Mrs. A. J. Vivas, Jr.
 Mr. Clarence E. Vogelgesang
 Mrs. Helen T. Von Tempisky
 Mrs. Mary Anne Vorfeld
 Mrs. May Day Lo Walden
 Mrs. Elizabeth Meares Waldrom
 Mrs. Norah E. Walker
 Ms. Jean M. Wall
 Mr. Howard Wallace
 Mrs. Helen Ware
 Mr. Craig Watanabe
 Mrs. A. D. Waterhouse
 Mrs. R. E. Watts
 Mrs. Gulab Watumull
 Mrs. Harold D. Weidig
 Ms. Sandry Weinrich
 Mrs. Donald F. Weiss
 Ms. Maxine J. Weller
 Mr. Jesse C. Wells
 Mrs. Ann W. Wheat
 Mrs. Rina M. Whelan
 Mrs. L. Harold Whitaker
 Mrs. R. E. White
 Mrs. Tina Lyman Whitmarsh
 Mrs. Elizabeth D. Wick
 Mrs. Margaret Wickenden-Robinson
 Ms. Mary Kay Wickers
 Howard Calvert Wiig
 Mrs. Edith King Wilcox
 Ms. Lois B. Wilder
 Mr. Wentworth Wilder, Jr.
 Mrs. Norma M. Williams
 Mr. Robert T. Williams, Sr.
 Mrs. Rodney F. Williams
 Mrs. Charline B. Wilson
 Miss Jean E. Wilson
 Mr. Mark K. Wilson, III
 Ms. Cynthia Winegar
 Mrs. George Winters
 Mrs. Carole Withers
 Mr. Thomas S. Witten
 Mr. and Mrs. R. C. Wolfgram
 Ms. Lillian Wong
 Mrs. Napualani V. Flood Wong
 Mr. Ross Wong
 Mr. Vernon Woo
 Mrs. Hart D. Wood
 Mr. Richard G. Wood
 Mr. and Mrs. Harlow D. Wright
 Miss Midgieann L. Wright
 Mrs. Kathleen Wyosnick
 Miss Haruko Yabusaki
 Mr. Andrew Yanoviak
 Mrs. Kathy Yeager
 Ms. Ann Yoklavich
 Ms. Mary R. Yort
 Mrs. John Youell
 Mrs. J. Gray Zabriskie
 Mr. William R. Zappas

Students/Seniors

Mrs. Nancy J. Alexander
 Mr. Norman Algiers
 Mr. Page M. Anderson
 Mr. and Mrs. Harry Ashendorf
 Mr. William T. Atkins
 Ms. Jean L. Barker
 Ms. Doris V. Bassity

Mrs. Helen M. Benedict
 Ms. Shirley D. Bennett
 Mr. Bernard Bergstein
 Mrs. C. J. Birnie
 Ms. Aurelia Bisby
 Mr. Norman J. Black
 Mrs. Lillian Bloomfield
 Ms. Marian L. Boeke
 Mr. William O. Boland
 Mrs. Hannah E. Bonsey
 Mrs. Nobuko Bouslog
 Mrs. Mary Bowers
 Mrs. Isabel Boyen
 Mr. William R. Brainerd
 Ms. Marianne Brennan
 Mrs. C. A. Brodwolf
 Mr. Sidney Brooks
 Mrs. Helen M. Brown
 Mrs. James D. Brown
 Miss Irva Brubacher
 Ms. Peggy Kehoe Buchwach
 Mr. Kenneth J. Bull
 Ms. Antoinette Bullough
 Mrs. John W. Bustard
 Mr. William Bustard
 Mr. William Carse
 Ms. Margaret E. Casey
 Miss Laura J. Cassidy
 Mrs. Dai Tim Chang
 Mr. Tin-Yuke Char
 Ms. Hilde K. Cherry
 Mrs. C.T. Cleghorn
 Ellen Colburn-Rohn, Ph. D.
 Miss Agnes C. Conrad
 Mrs. Irma M. Conwell
 Mr. Frank E. Cook
 Mrs. Margaret Corbett
 Mr. Wilmer H. Cressman
 Dr. E. Creutz
 Mrs. Ruth D. Cushnie
 Mrs. G. Dudley Dambacher
 Mr. Gilbert N. Davis
 Dr. A. Grove Day
 Mrs. W. C. de Renne
 Ms. Helen Delo
 Mrs. S. A. Derby
 Mrs. Matthew Derzon
 Mrs. Virginia Devine
 Ms. Ruth M. Dowling
 Mrs. Kenda Draper
 Mrs. John H. Earle
 Mr. David P. Eldredge
 Mrs. D. S. Embree
 Ms. Larissa G. Essig
 Ms. Denby Fawcett
 Miss Helen Fecenko
 Leabert R. Fernandez, M.D.
 Ms. N. Feuerstein
 Mrs. Elizabeth A. Finefrock
 Ms. Stephanie L. Fitzpatrick
 Ms. Joan M. Flaharty
 Mr. W. Patrick Flanagan
 Mr. Sam Ford
 Miss Sophie M. Frandsen
 Mrs. Evelyn M. Frey
 Mrs. H. Lockwood Frost
 Mrs. Claudine Fujii
 Mrs. Albert C. Gaddis
 Mrs. Reginald P. Gage, II
 Mr. Ralph G. Geiser
 Mrs. Luigi G. Giacometti
 Mrs. Beatrice E. Gordon
 Mr. J. Richard Gossett
 Mrs. Thelma F. Greig
 Ms. Pat Griffin
 Mrs. Norma Gunther
 Ms. Lisa Hacsakaylo
 Miss Ann L. Halsted
 Hana Cultural Center

Ms. Kitty K. Hardeck
 Mr. Richard S. Hart
 Mrs. Dickson J. Hartwell
 Mrs. Clark J. Hastert
 Ms. Hazel Hee
 Mr. Robert F. Hemphill
 Mrs. Colin J. Herrick
 Mr. Saichi Higashi
 Mrs. Kathleen V. Higgins
 RAdm. Ronald D. Higgins, USN (Ret.)
 Ms. Ruth Holt
 Ms. Jane T. F. Hong
 Mrs. Irmgard Hormann
 Mr. Hugh Howell
 Mr. John W. Hoxie
 Mr. Joel Irwin
 Mrs. Myron O. Isherwood, Sr.
 Mrs. Asako Ishimoto
 Mr. Michael Jackson
 Ms. Nellamae Jacobson
 Mr. Allan Jim
 Mrs. Allen R. Johnson
 Mrs. Betty L. Johnson
 Miss Evlyne I. Johnson
 Dorothy R. Joyce
 Ms. Beverly A. Kam
 Mrs. Philip Kam
 Mr. Stephen S. Kanda
 Ms. Karen Kane
 Miss Lani Kea Kanehe
 Mrs. Gina Kawanakoa-Bartels
 Mr. Samuel Kendall
 Mrs. Kenneth R. Kerns
 Mrs. Cecily H. Kikukawa
 Mrs. Maurice King
 Mr. W. Norman King
 Miss Beatrice H. Krauss
 Mrs. Kini O'Keahi Kua'ana
 Mrs. Karl Kuppe
 Mrs. David E. Larsen
 Miss Vivian E. V. Laury
 Ms. Linda M. Le Geyt
 Ms. Cynthia H. Lee
 Leilehua High School
 Mr. Addison W. Lewis
 Mrs. Virginia May Lewis
 Mrs. Pearl S. Lockwood
 Mr. Malcolm H. Love
 Mrs. Elizabeth R. Low
 Mrs. Clorinda L. Lucas
 Mrs. D. Belden Lyman
 Ms. Alison MacBride
 Capt. Colin J. Mackenzie
 Mrs. Lillie E. Mackenzie
 Mr. David W. Malvin
 Mrs. A. Lester Marks
 Mrs. A. O. Marrack
 Mrs. Dolores Martin
 Mr. P. A. Martineau
 Mrs. Donald C. Matthews
 Mrs. Jessie C. Matthias
 Dr. E. J. McClurkin
 Mr. J. R. McConkey
 Mrs. Albert E. McGillivray
 Ms. Alma McGoldrick
 Mrs. Fay Wren Midkiff
 Mrs. Jean Miller
 Dr. Donald D. Mitchell
 Mrs. Glenn G. Mitchell
 Mr. R. Burke Morden
 Mrs. W. A. Morrison
 Mrs. William J. Mullahey
 Mr. Jeffrey Nishi
 Mrs. Eileen M. O'Brien
 Mrs. Lenore Nims O'Brien
 Mrs. M. L. O'Brien
 Mrs. Justin A. O'Neil
 Office of Environmental Quality
 Miss Margaret T. Ohta

Mr. Champ S. Ono
 Mrs. T. M. Parker
 Mr. James A. Paulauskas
 Rev. Kenneth D. Perkins
 Mrs. Richard E. Peterson
 Mr. and Mrs. Max L. Pilliard
 Dr. Mary Roseamonde Porter
 Mrs. May Porter
 Pu'uhonua O Honaunau
 Pu'ukohola Heiau NHS
 Miss Mildred L. Read
 Ms. Freda Reeser
 Mrs. Mary Deas Reynolds
 Mrs. Jessie S. Ricketts
 Mrs. Peggy P. Robb
 Mrs. Ethel S. Roehrig
 Mr. J. Albert Roesch
 Mrs. Violet-Marie Rosehill
 Mr. D. Campbell Ross
 Louis E. Roth
 Mr. John Ryman
 Mrs. Janet A. Sanborn
 Miss Eileen Sander
 Mrs. Fred C. Schattauer
 Bim Schelderup
 Miss Flora L. Scott
 Mrs. Marc Seastrom
 Mr. DeLos A. Seeley
 Mrs. Marion Senger
 Mrs. Marystuart L. Sheldon
 Mrs. Keni Shigeoka
 Mrs. Lloyd E. Short
 Mrs. Joseph Sikes
 Mr. John S. Silva, Jr.
 Mrs. Harry Smith
 Mr. R. M. Smith
 Mrs. Ruth E. Snook
 Mrs. Howard W. Soule
 Mr. and Mrs. Alfred P. Souza
 Mr. C. H. Spiegelberg
 Mrs. Helen F. Strubbe
 Mrs. Joe W. Stryker
 Ms. Lillian Sullivan
 Mrs. Frances L. Sutherland
 Mr. E. White Sutton, Jr.
 Mrs. Sarah L. Sweeney
 Mrs. Francis Tappaan
 Mrs. William A. L. Thoenes, Sr.
 Ms. Bethany L. Thompson
 Mrs. Antoinette Thomson
 Mrs. Douglas B. Thomson
 James P. D. Thropp, Jr.
 Miss Marion A. Todd
 Mr. Eric Tollestrup
 Mrs. Helen Judd Toms
 Miss Maydean K. L. H. Torres
 Mr. Robert Townsend
 Mrs. Joel Trapido
 Mrs. Ruby Troy
 Mr. Edgar B. Twelker
 Mrs. Breck Tyson
 Mrs. Hilda H. Voss
 Miss Eileen Wagoner
 Dr. John N. Warner
 Ms. Pamela H. Warnken
 Mrs. Alice C. Wedemeyer
 Mrs. Marlene Werner
 Mrs. Katherine H. Wery
 Mrs. Amanda Westlake
 Mrs. Baldwin Whittier
 Ms. Linda Wiig
 Ms. Ruth R. Wilkinson
 Mr. Kin Chin Wong
 Mr. Sau Hoy Wong
 Ms. Frances C. Wood
 Mrs. Sarah Lee Yang
 Mr. Linton Yee
 Mrs. Fred O. Young
 Miss Patricia Zane

Corporate Heritage Associates

The Corporate Heritage Associates Program was launched recently to give recognition to businesses which contribute \$1,000 to \$10,000 renewable annually. Gifts may be unrestricted for use as directed by Historic Hawai'i's Board of Trustees or may be designated to support the Main Street Hawai'i program.

Historic Hawai'i wishes to thank the following businesses and their designated representatives:

C DUDLEY PRATT, JR.,
Hawaiian Electric Industries, Inc.
JOHN B. KELLEY,
Alexander & Baldwin, Inc.
FRANK MANAUT,
Bank of Hawaii
CHARLES CRAIN,
Hawaiian Telephone Company
A. MAURICE MYERS,
Aloha Airlines, Inc.
J. W. A. BUYERS,
C. Brewer & Co., Ltd.
GAIL A. CHEW
The Estate of James Campbell
DIANE PLOTTS,
Hemmeter Investment Company
JAMES WO,
C. S. Wo Foundation
DICK YODA,
Hawaiian Host Chocolates
R. DWAYNE STEEL,
GracePacific Corporation
EDWARD C. HUSTACE,
Victoria Ward, Limited
DOUGLAS PHILPOTTS,
Hawaiian Trust Co., Ltd.
FRANKLIN TORIOKA,
National Securities, & Investment, Inc.

JAY SHIDLER,
Shidler Family Foundation
ROBERT OZAKI,
Amfac Hawaii, Inc.
BEN TAGUCHI,
M & E Pacific, Inc.

Other corporations contributing to Historic Hawai'i Foundation include:

Patron

Associates Four
Century 21 Pali Properties
Finance Factors, Ltd.
Foodland Super Markets, Ltd.
HPM, Inc.
Hawaiian Cement
MEPC Hawaiian Investments, Inc.
Min Plastics & Supply, Inc.
Pacific Resources, Inc.
Pomare, Ltd.

Participating

American Land Company
Architects Hawaii, Ltd.
Cardinal Services, Ltd.
Dole Hawaii Division,
Castle & Cooke, Inc.
First Interstate Bank of Hawaii
First Hawaiian Bank
Grosvenor International (Hawaii), Ltd.
Group 70
Hamilton, Gibson, Nickelsen, Rush & Moore
Honolulu Advertiser, Inc.
Johnson & Higgins of Hawaii, Inc.
Mauna Lani Resort
Mouse Builders, Inc.
Oahu Market Associates, Inc.
Pacific Construction Co., Ltd.
Peat, Marwick, Mitchell & Company
Phillips, Brandt, Reddick & Associates (Hawaii), Inc.
Royal Contracting Co., Ltd.
Territorial Savings & Loan Association
Title Guaranty of Hawaii, Inc.
Touche Ross & Company

Contributing

AAA Termite & Pest Control, Inc.
Adams Design, Inc.
Aloha State Sales Company, Inc.
American Express Company
Arthur Andersen & Co.
Bank of Honolulu
Belt, Collins & Associates
Bishop Trust Co., Ltd.
Blackfield Hawaii Corporation
CJS Group-Architects, Ltd.
Central Pacific Bank
Chaney Brooks & Company

Charles Kober Associates/Hawaii
City Mill Co., Ltd.
Commercial Shelving, Inc.
Communications-Pacific, Inc.
Coopers & Lybrand
Cordco
Del Monte Corporation
Dillingham Investment Corporation
E. K. Fernandez Shows
Eagle Distributors, Inc.
Ernst & Whinney
First Federal Savings & Loan of America
Franklin Gray & Associates/Architects, Inc.
Gentry Companies
GO Financial Corporation
D. H. Graham Company, Ltd.
Grant Thornton
Halekulani Hotel
Hawaii National Bank
Hawaiian Crane & Rigging, Ltd.
Hawaiian Life Insurance Co., Ltd.
Honofed Development Corp.
Honolulu Club
Honolulu Insurance Agency, Ltd.
Honolulu Mortgage Company, Inc.
Honolulu Painting Company, Ltd.
Hopaco
International Savings & Loan
Iole Development Corporation
Island Insurance Company, Ltd.
Island Title Corporation
Jardine Insurance Services Hawaii, Inc.
John J. Stanford, Ltd.
Johnson, Reese, Luersen, Lowrey Architects, Inc.
Kajioka, Okada & Partners, Inc.
Killingsworth, Stricker, Lindgren, Wilson & Associates, Inc.
Liberty Bank
Longs Drugs Stores, Inc.
Maggie Parkes & Associates, Inc.
Magoon Estate, Ltd./Magoon Brothers, Ltd.
Malia International, Ltd.
Midpac Lumber Company, Ltd.
Milici/Valenti Advertising, Inc.
Monroe & Friedlander, Inc.
Myers Properties Corporation
Oceanic Cablevision
Okita, Kunimitsu & Associates, Inc.
Pacific Coast Mortgage Corporation
The Petty Corporation
Pleasant Hawaiian Holidays
Professional Image, Inc.
R. M. Towill Corporation
Safeway Stores, Inc.
Sears, Roebuck & Company
Sellers Advertising, Inc.
Servco Pacific, Inc.
Smith, Himmelmann & Shklov
Stryker-Weiner Associates, Inc.
Sun Fashions of Hawaii, Ltd.
TRB/Hawaii, Ltd.
Travelers Companies

Westin Ilikai
Wimberly, Whisenand, Allison, Tong & Goo Architects, Ltd.
Young Laundry & Dry Cleaning
Alvin Zane & Associates, Inc.

Supporting

American Savings & Loan
Ameron H C & D
Clyde's Shoes, The Sandal Shop
Crossroads Press, Inc.
Edward Enterprises, Inc.
James E. Fleming Company
Honomalino Management
Honsador
Hotel Hana Maui
King & Neel, Inc.
Life Chiropractic
Lynn Tilton, Ltd.
Ming Chew Associates
Oahu Market Trust
Riecke, Sunnland, Higuchi, Kono Architects, Ltd.
Waipio Valley Shuttle Tours

Trusts & Foundations

Atherton Family Foundation
Cooke Foundation, Ltd.
Frear Eleemosynary Trust
W. A. Gerbode Foundation
Hawaii Committee for Humanities
Boyd & Roberta MacNaughton Foundation
G. N. Wilcox Trust

Historic Hawai'i is grateful for the in-kind contributions of merchandise or service donated by the following:

Aloha Airlines
Ask Mr. Foster Travel Service
Budget Rent-A-Car
Fishermen's Wharf Restaurant
Hawaiian Airlines
Honolulu Club
John Guild Inn
Kauai Resort Hotel
Kemoo Farm Restaurant
Mauna Kea Beach Resort
Mid-Pacific Airlines
Sea Life Park
The Biltmore Hotel, Los Angeles
The Royal Hawaiian Hotel
Waikiki Beach Tower Hotel
Waimea Falls Park
Yacht Harbor Restaurant

We have made every effort to insure an accurate and complete listing of our supporters. If, however, we have misspelled or inadvertently omitted any name, please let us know so that we may make corrections. Mahalo.

Historic Hawai'i Foundation

119 Merchant St., #402
Honolulu, Hawai'i 96813

EXECUTIVE COMMITTEE

Nathaniel R. Potter, Jr.
Chairman of the Board

Phyllis G. Fox
President

William S. Richardson
First Vice Chairman

Robert H. Gerell
Second Vice Chairman

Wm. Frank Brandt
Secretary

Arthur C. Tokin
Treasurer

Barbara Mills
William W. Paty, Jr.

BOARD OF TRUSTEES

Peter D. Baldwin
Irwin S. Bickson
Vance Borland, Jr.
Kenneth F. Brown
Keola Childs
Bill Cook
Bonnie Eyre
Robert M. Fujimoto
William F. Gleason
Norman Goldstein, M.D.
Joseph W. Hartley, Jr.
Larry E. Helber
Ronald Kats
Cecily Kikukawa
Alton Kuioka
Phyllis Kunimura
Michael Liu
Warren Luke
Wing Tek Lum
Charles Pietsch, III
William Stricklin
Gerald Takano
Jeffrey Watanabe
Donald Yamada

PAST PRESIDENT

Richard A. Coons

TRUSTEES EMERITUS

Mrs. Allyn Cole, Jr.
Mrs. H. Alexander Walker

DEVELOPMENT DIRECTOR

Marge S. Kam

MAIN STREET COORDINATOR

Albert R. Fleming

*Cover Art by Ramsay
Courtesy of Old Koloa Town*

Historic Hawai'i Foundation
Post Office Box 1658
Honolulu, Hawai'i 96806

Non-Profit
Organization
U.S. Postage
PAID
Honolulu, Hi.
Permit No. 1301

ANNUAL MEETING

This has been an exceptional year for Historic Hawai'i and we have planned an exceptional Annual Meeting to celebrate our success.

The Trustees extend a very special invitation to our members to join us for

A Main Street Celebration at One of Honolulu's First "Main Streets"

Saturday, April 19, 1986

**The Royal Hawaiian Tavern
2 Merchant Street**

5 p.m. Annual Meeting

Preservation Awards
Election of President, Trustees
Main Street Report

7 p.m. Celebration

Cocktails, heavy pupus
Moe Keale and the Moe Keale Band

There is no charge for the meeting.
There is a \$15 per person fee for the celebration.

For reservations, call 537-9564.