

Identifying & Documenting Character-Defining Features

Aloha! We will begin shortly.

Today we will be using the Chat function to receive your input.

Please enter your name and location to check in.

HISTORIC HAWAII' FOUNDATION

A statewide non-profit advocacy organization, **Historic Hawai'i Foundation** encourages the preservation of historic buildings, sites, structures, objects and districts relating to the history of Hawai'i.

We help people save Hawai'i's historic places.

www.HistoricHawaii.org



The **National Park Service** preserves unimpaired the natural and cultural resources and values of the National Park System for the enjoyment, education, and inspiration of this and future generations. The Park Service cooperates with partners to extend the benefits of natural and cultural resource conservation and outdoor recreation throughout this country and the world.



American Planning Association
Hawaii Chapter

Creating Great Communities for All

The American Institute of Certified Planners (AICP) is the APA's professional institute providing recognized leadership nationwide in the certification of professional planners, ethics, professional development, planning education, and the standards of planning practice.

<https://hawaii.planning.org/>



The AIA is the voice of the architectural profession and the resource for its members in service to society. Based in Washington, D.C., the American Institute of Architects (AIA) has been the leading professional membership association for licensed architects, emerging professionals, and allied partners since 1857.

AIA Honolulu is a Chapter of the AIA representing and serving members on the island of O‘ahu, Hawai‘i, Kaua‘i and Lāna‘i. Within these islands, AIA Honolulu represents and serves over 800 individual member architects, associates, and allied design professionals.

<https://www.aiahonolulu.org/>

ABOUT THIS COURSE

Understanding of what character-defining features are and why they matter

Assessment of the character-defining features of a historic property based on the Secretary of the Interior's Standards

Assessment of visual character of setting, overall visual characteristics, at close range and interior spaces

Understanding documentation methods when assessing historic properties

How to incorporate assessment and documentation into a preservation plan and select appropriate treatments

Understanding of common characteristics of regional styles and adaptations specific to Hawaii

Interaction

Chat Box: use the chat to ask a question at any time. We will address questions after the presentation is finished.

Interactive Polling: use your mouse to select your answer to multiple choice questions.

Knowledge Check 1

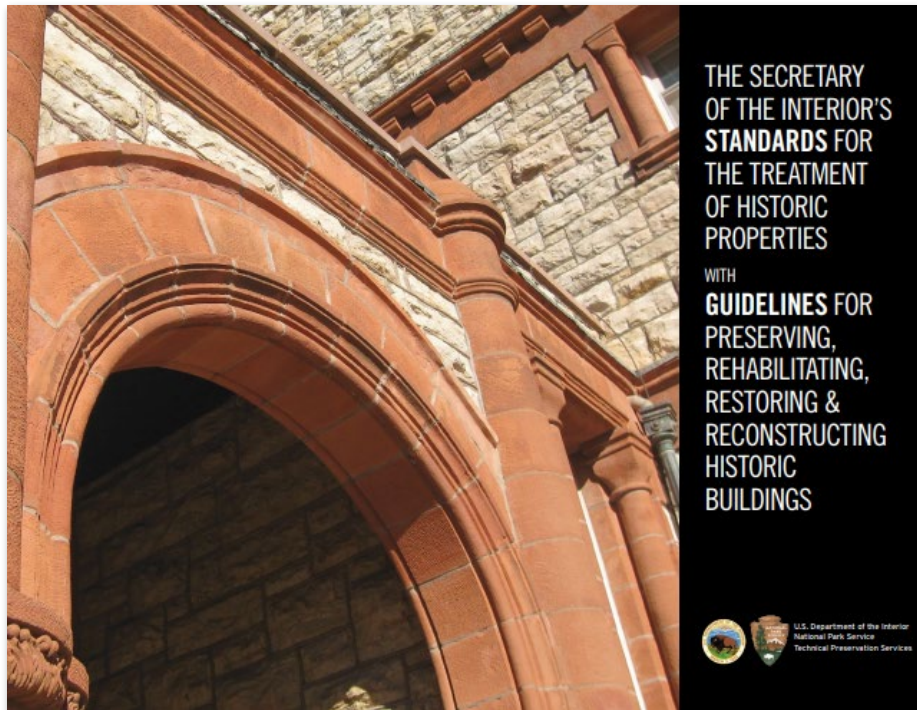
Please indicate your affiliation or primary interest in today's topic.

Select all that apply.

- Native Hawaiian Organization
- Federal, State or Local Government
- Community or Preservation Organization
- Land Use Professional (planner, architect, landscape architect, engineer, construction)
- Public or Community Interest
- Property Owner/Manager or Developer
- Other

Character-Defining Features

CHARACTER-DEFINING FEATURES — CONTEXT



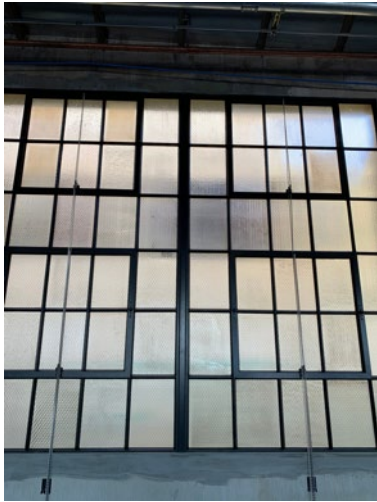
IDENTIFY

RETAIN



PRESERVE

CHARACTER-DEFINING FEATURES — WHAT ARE THEY?



CHARACTER-DEFINING FEATURES — WHAT ARE THEY?



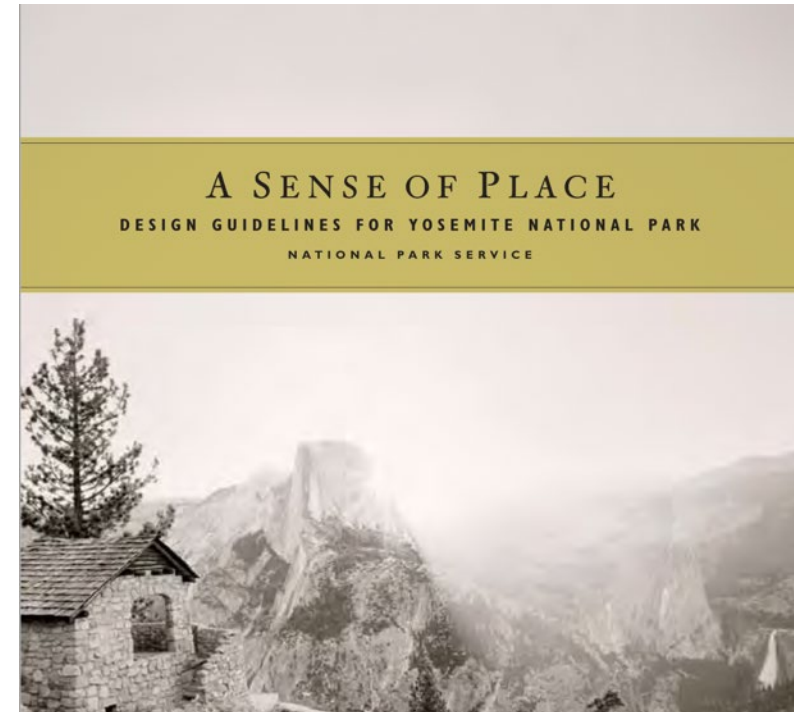
CHARACTER-DEFINING FEATURES — WHY IDENTIFY?



CHARACTER-DEFINING FEATURES — WHY IDENTIFY?



HISTORIC STRUCTURE REPORT
WILLIAMS RANCH
GUADALUPE MOUNTAINS NATIONAL PARK



Knowledge Check 2

A nonprofit board just acquired a historic house that they want to use as office space. **Board member A** suggests they hire an architect straight away to draw up some plans. **Board member B** suggests that they first hire someone to identify the character defining features of the property and develop a historic structures report.

Whose suggestion is more aligned with best preservation practice?

Board member A

or

Board member B

Knowledge Check 2

Answer

Board member B

First identify the character defining features of the property and develop a historic structures report

IDENTIFYING CHARACTER DEFINING FEATURES - A THREE-STEP APPROACH



FROM AFAR



CLOSE RANGE



INTERIOR

IDENTIFYING CHARACTER DEFINING LANDSCAPE CHARACTERISTICS



NPS - THIRTEEN LANDSCAPE CHARACTERISTICS

IDENTIFYING CHARACTER DEFINING LANDSCAPE CHARACTERISTICS



MAKALAPA NAVY HOUSING HISTORIC DISTRICT, NAVAL BASE PEARL HARBOR – NATIONAL REGISTER SIGNIFICANCE



Criterion A for its association with events connected with the U.S. Navy Preparations for World War II

Criterion B for its association with Admiral Nimitz who resided there and directed the US Navy operations in the war

Criterion C for its neighborhood design, groundbreaking construction techniques, and architectural design

Period of Significance: 1940 -1945

LANDSCAPE CHARACTERISTICS – NATURAL SYSTEMS & FEATURES



MAKALAPA CRATER

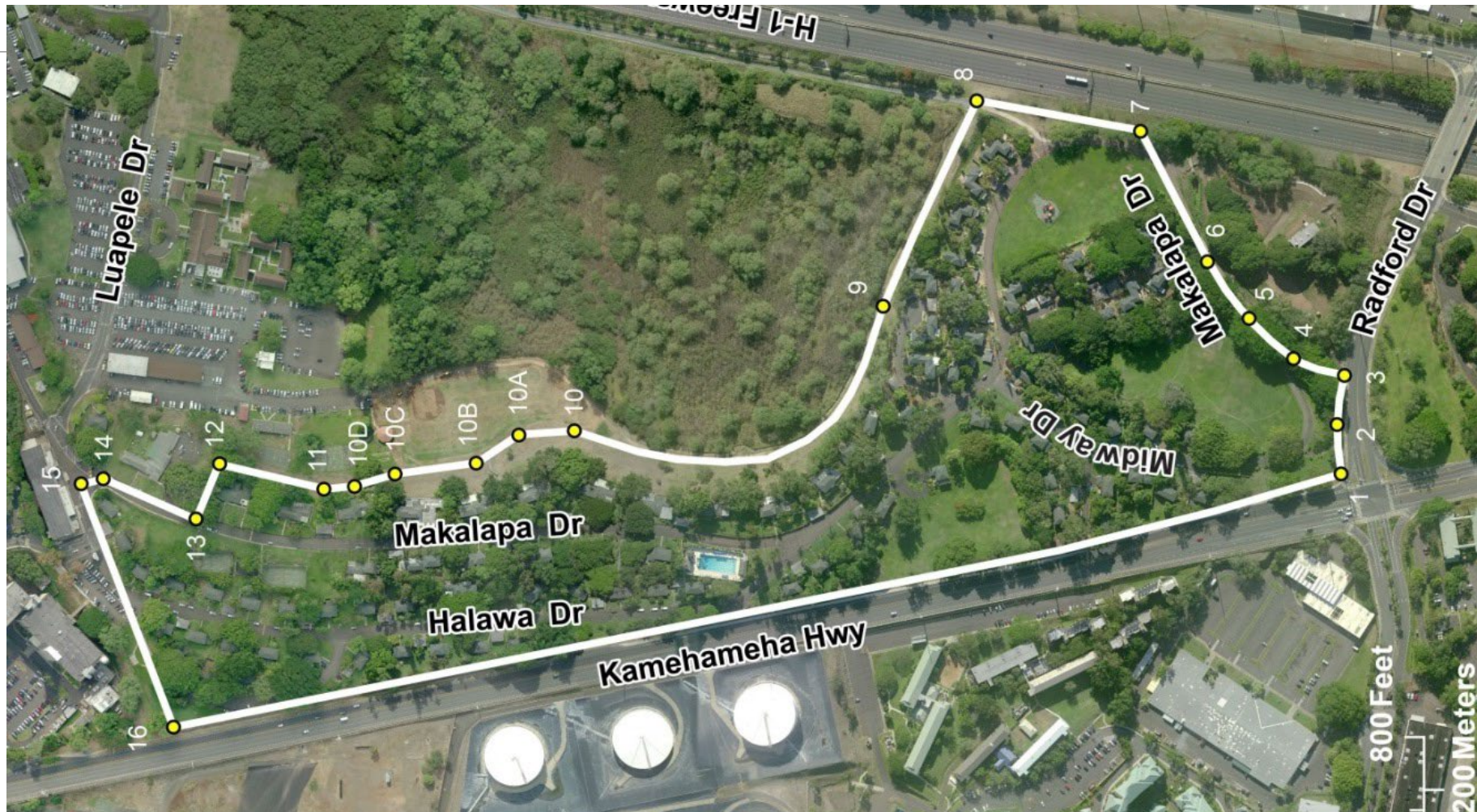
LANDSCAPE CHARACTERISTICS — TOPOGRAPHY & SPATIAL ORGANIZATION



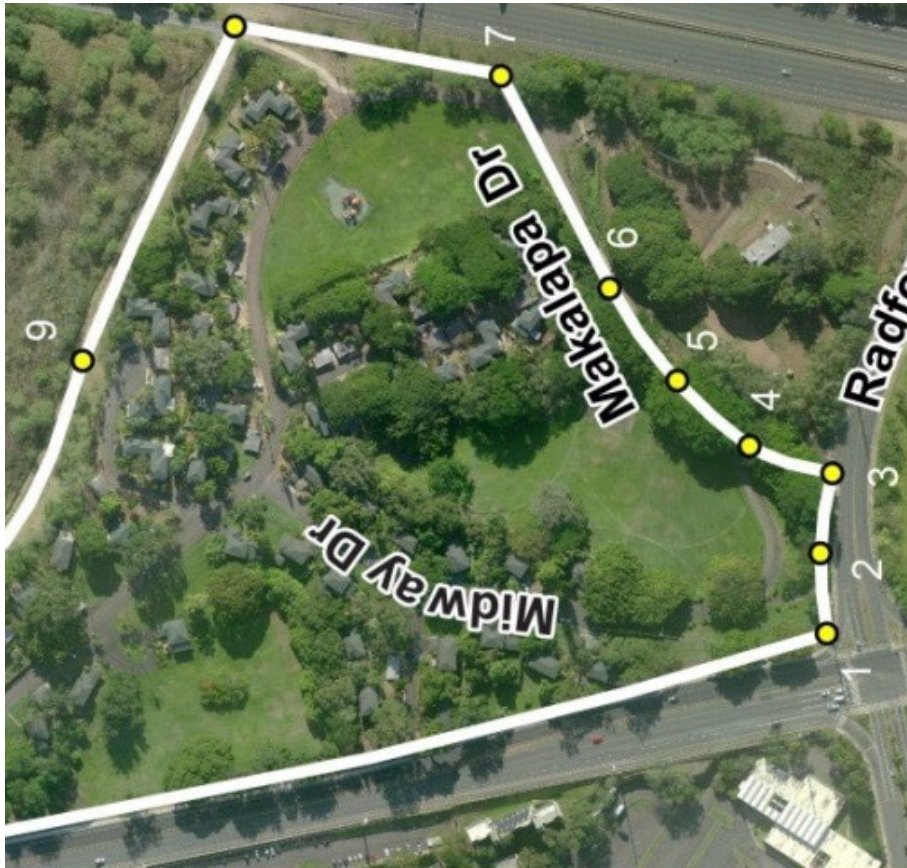
LANDSCAPE CHARACTERISTICS – CIRCULATION



LANDSCAPE CHARACTERISTICS — SPATIAL ORGANIZATION



LANDSCAPE CHARACTERISTICS — SPATIAL ORGANIZATION & BUILDING CLUSTERS



LANDSCAPE CHARACTERISTICS — VEGETATION



LANDSCAPE CHARACTERISTICS – STRUCTURES & SMALL SCALE FEATURES



LANDSCAPE CHARACTERISTICS – STRUCTURES & SMALL SCALE FEATURES



CHARACTER-DEFINING FEATURES — BUILDINGS

Three step approach

- ✓ First, examine a building from afar to understand its overall setting and Identify the overall visual character of a building ;
- ✓ Second, move up close to appreciate its materials and the craftsmanship and surface finishes evident in these materials;
- ✓ Third, go to interior and through a building's spaces with attention to spatial sequencing, overall layout and details that comprise its interior visual character.

CHARACTER-DEFINING FEATURES — FROM AFAR



SETTING; SHAPE OF BUILDING; ROOF AND ROOF FEATURES; PROJECTIONS

CHARACTER-DEFINING FEATURES — FROM AFAR



RECESSES OR VOIDS; OPENINGS FOR WINDOWS AND DOORS; MATERIALS

CHARACTER-DEFINING FEATURES — FROM AFAR



- SETTING
- SHAPE OF BUILDING
- ROOF AND ROOF FEATURES
- PROJECTIONS
- RECESSES
- OPENINGS WINDOWS & DOORS
- MATERIALS

CHARACTER-DEFINING FEATURES — CLOSE UP (STEP 2)



MATERIALS; DETAILS AND CRAFTSMANSHIP

CHARACTER-DEFINING FEATURES — CLOSE UP (STEP 2)



MATERIALS; DETAILS AND CRAFTSMANSHIP

CHARACTER-DEFINING FEATURES — CLOSE UP (STEP 2)



MATERIALS; DETAILS AND CRAFTSMANSHIP

CHARACTER-DEFINING FEATURES — CLOSE UP (STEP 2)



MATERIALS; DETAILS AND CRAFTSMANSHIP

CHARACTER-DEFINING FEATURES — INTERIOR (STEP 3)



INDIVIDUAL SPACES AND SPACES THAT ARE RELATED TO EACH OTHER

CHARACTER-DEFINING FEATURES — INTERIOR (STEP 3)



INTERIOR FEATURES THAT ARE PART OF THE BUILDING

CHARACTER-DEFINING FEATURES — INTERIOR (STEP 3)



DISTINCTIVE SURFACE MATERIALS AND FINISHES

CHARACTER-DEFINING FEATURES — INTERIOR (STEP 3)



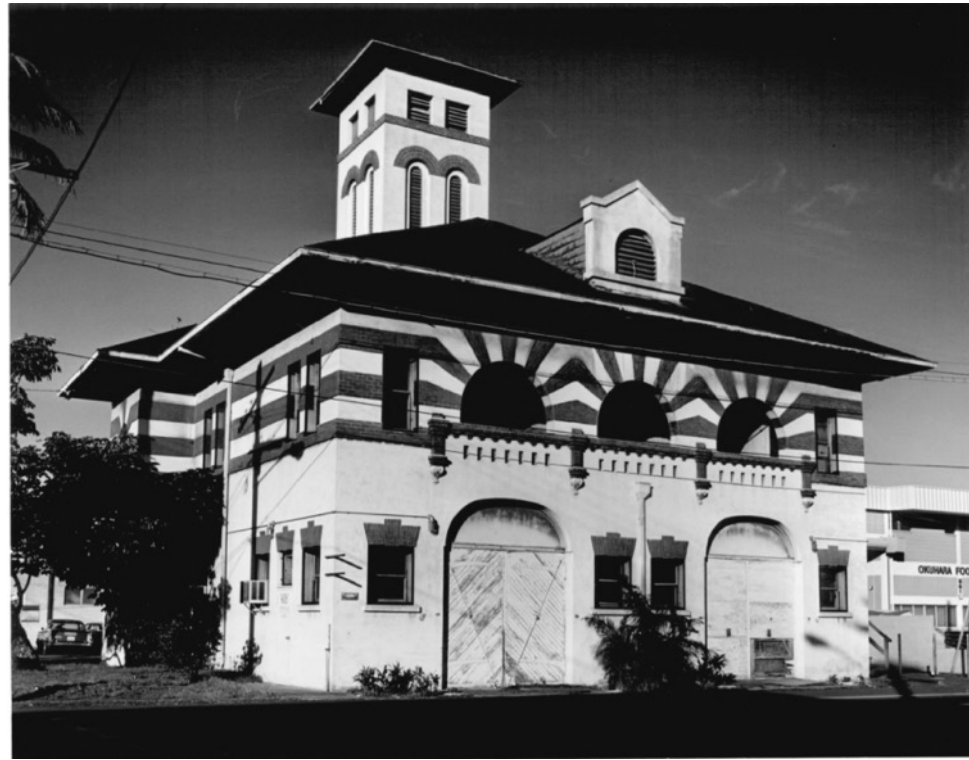
EXPOSED STRUCTURE

CHARACTER-DEFINING FEATURES — INTERIOR (STEP 3)



DISTINCTIVE SURFACE MATERIALS AND FINISHES

Knowledge Check 3



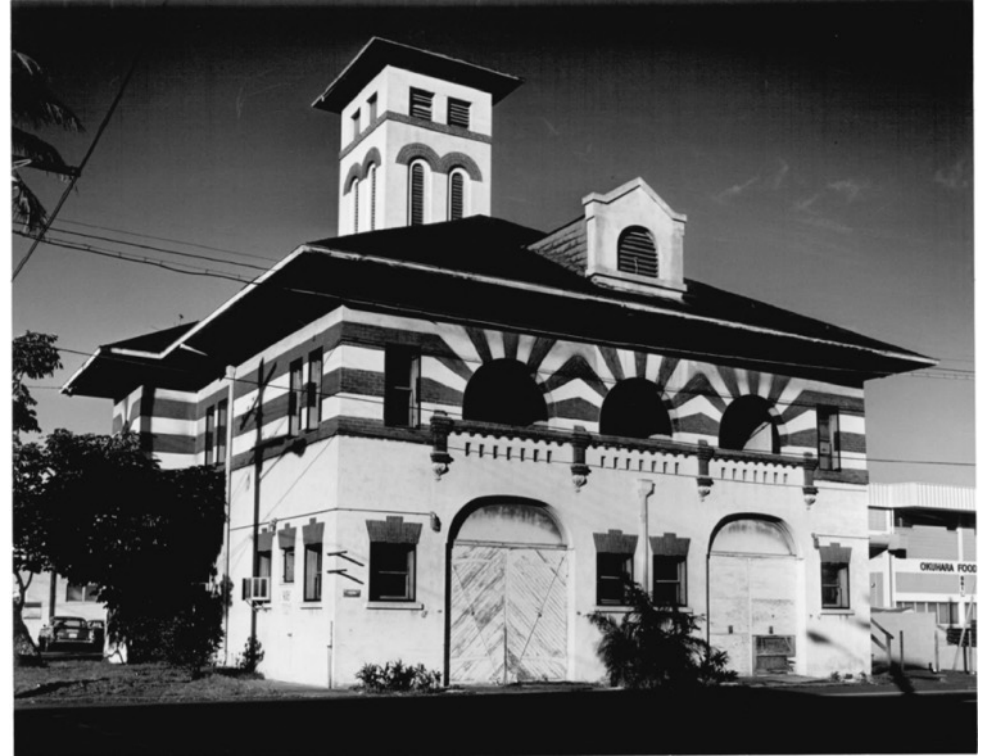
What are some of the overall character defining features of the Palama Fire Station?

- A. Overall building & roof forms**
- B. Openings for windows & doors**
- C. Tooling of the mortar joints**
- D. Both A and B**

Knowledge Check 3

Answer

D. Both A & B



Overall building & roof forms

Openings for windows & doors

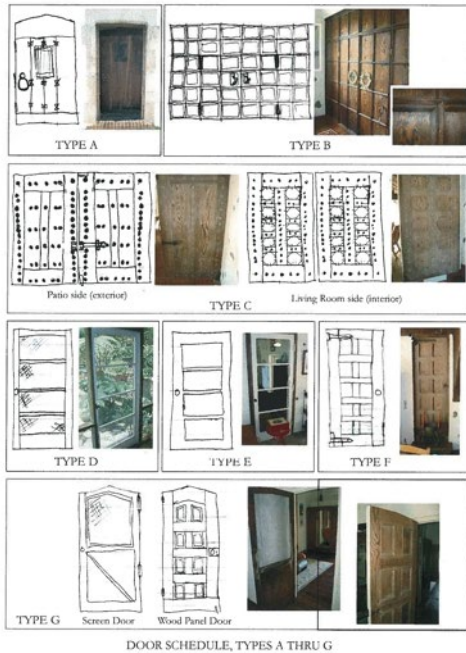
CHARACTER-DEFINING FEATURES — SOME WAYS TO DOCUMENT

United States Department of the Interior
National Park Service / National Register of Historic Places Registration Form
NPS Form 10-900
OMB No. 1024-0018

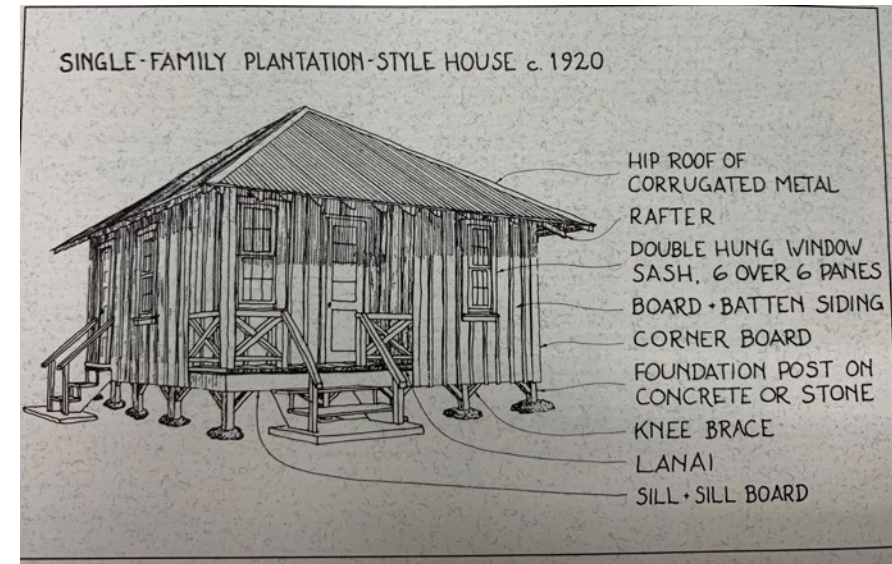
(Expires 03/10/12)

Withington House
Name of Property

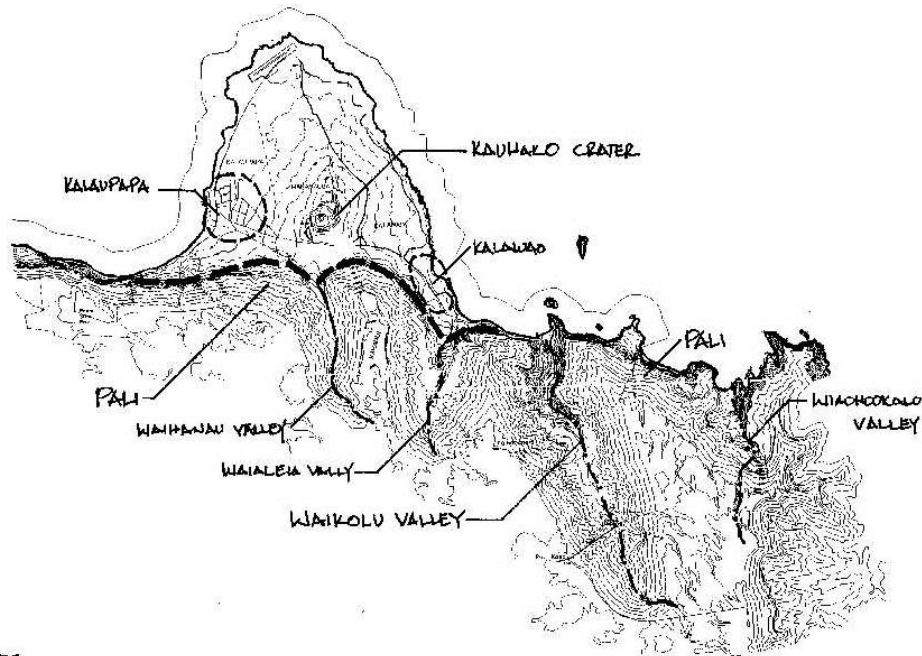
Honolulu, Hawai'i
County and State



- ANNOTATED PHOTOGRAPHS
- ANNOTATED SKETCHES
- ILLUSTRATIVE NARRATIVE
- SCHEDULES



CHARACTER-DEFINING FEATURES — SOME WAYS TO DOCUMENT



TN

APPROXIMATE SCALE 1" = 1500'
SOURCE: ARCHEOLOGICAL SURVEY,
KALAUAPA NHP, 1997. PACIFIC ISLANDS SUPPORT OFFICE.

NATURAL SYSTEMS & FEATURES
KALAUAPA SETTLEMENT
KALAUAPA PENINSULA

- ANNOTATED PHOTOGRAPHS
- ANNOTATED SKETCHES
- ILLUSTRATIVE NARRATIVE
- SCHEDULES

Hawai'i Regional Styles



NATIVE HAWAIIAN ARCHITECTURE



Illustration by Herb Kāne



Hale interior

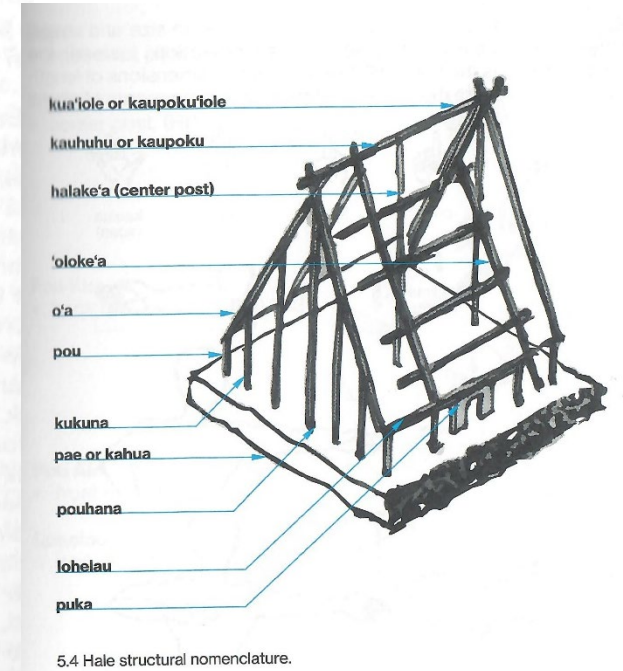
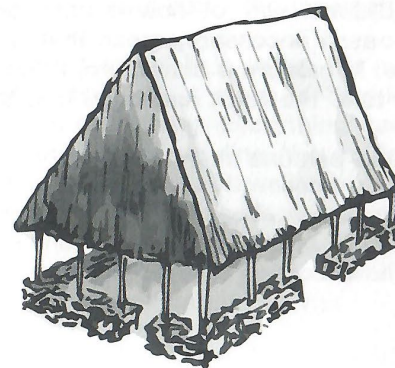
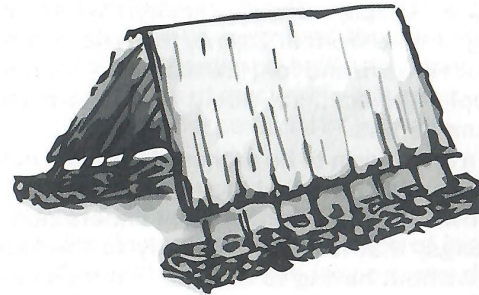
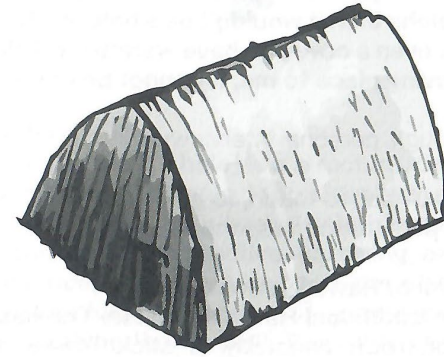


Pu'ukohala Heiau

Basic Hale Typologies



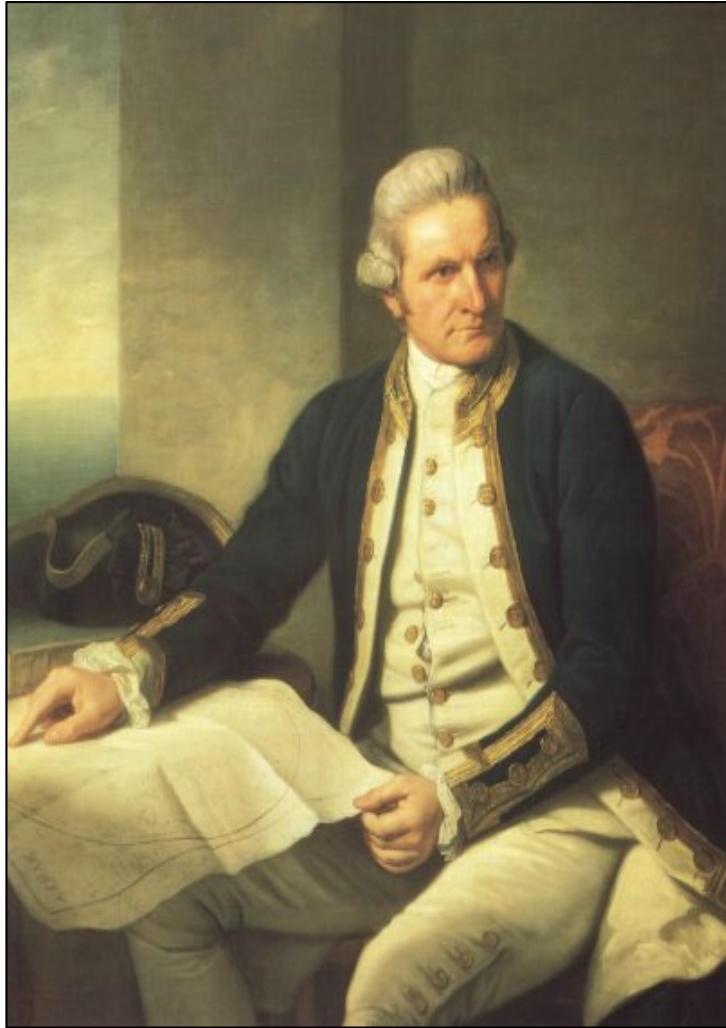
The last grass house on Lāna'i, 1912



- Stone foundations
- Hardwood structures lashed together
- Steep gable roofs
- Doors on side wall
- Pili grass thatch



WESTERN CONTACT AND INFLUENCES

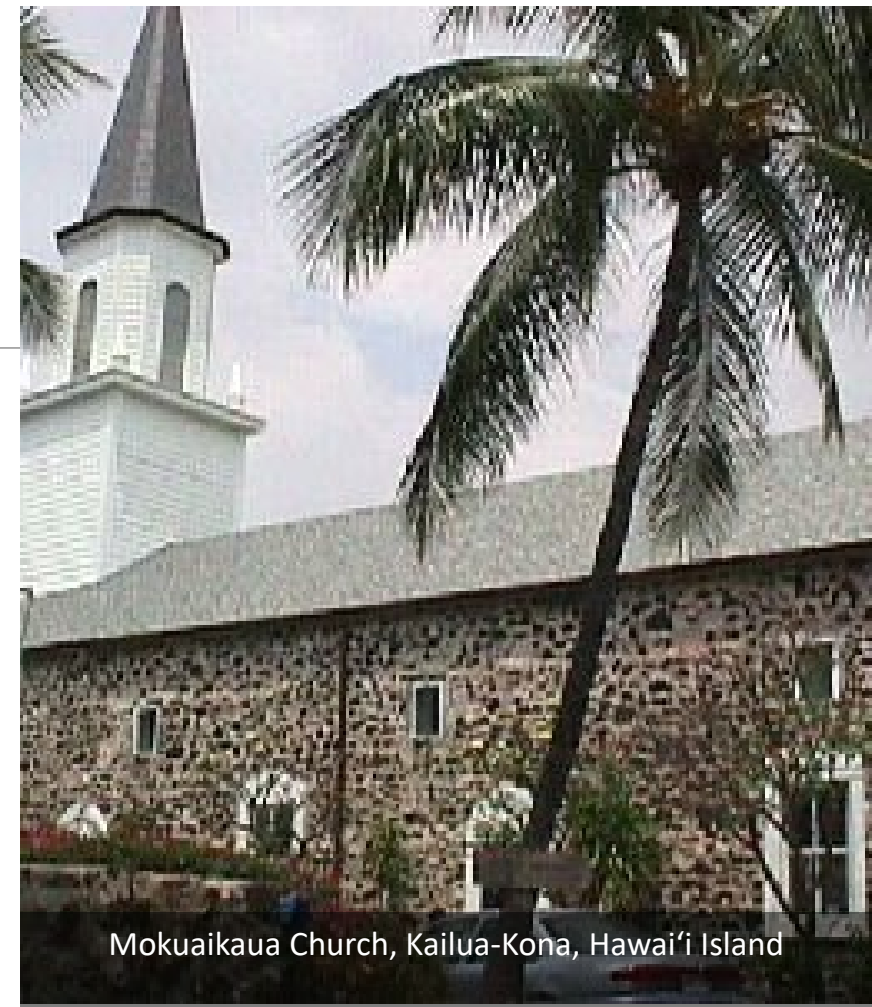


Captain James Cook





Kawaiaha'o Church, Honolulu, O'ahu



Mokuaikaua Church, Kailua-Kona, Hawai'i Island

MISSIONARIES & NEW ENGLAND INFLUENCES

MISSIONARIES & NEW ENGLAND INFLUENCES



Hale Pai, Lahainaluna, Maui



Old School House, Punahou School, O'ahu



Frame House, Honolulu, O'ahu



HAWAIIAN TRANSITIONAL STYLE



- Thatch on timber frame construction
- Hip roof form becomes predominant
- Western windows and doors
- Covered porches



Wai'oli Mission, Kaua'i

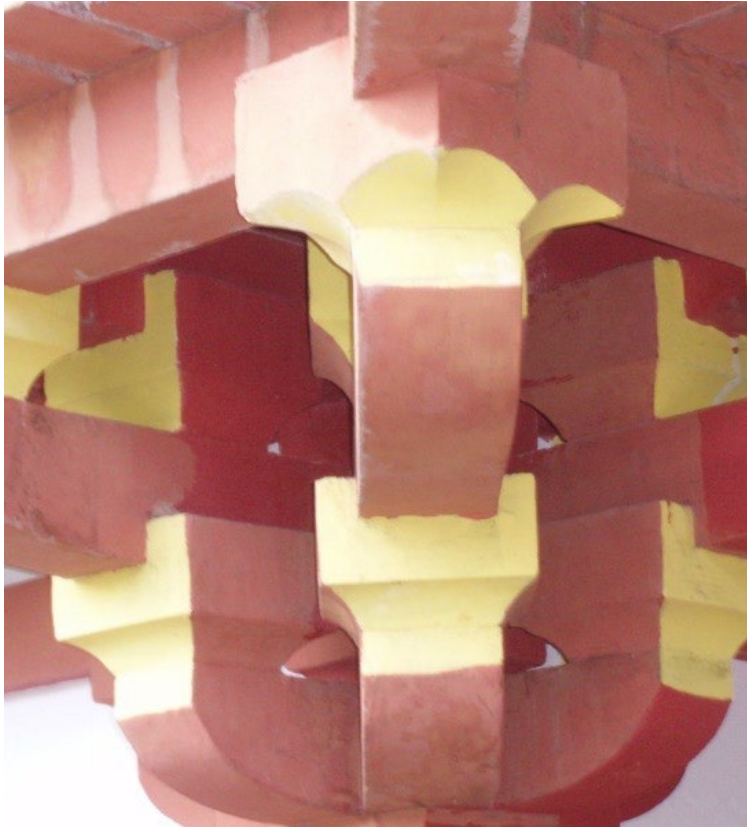


Kōloa Plantation Camp, early 20th century



Kaua'i

PLANTATION STYLE



JAPANESE CARPENTERS

- Single wall construction
- Exterior girt to stiffen wall
- Post and pier foundations
- Front covered entry
- Simple gable roof form
- Multi-light double hung windows



Lānaʻi City



Honolulu Museum of Art

REGIONAL DESIGN OF THE 1920s – 1930s



First Chinese Church of Christ
by Hart Wood



Alexander and Baldwin Building
by C.W. Dickey



Izumo Taisha
by Hego Fuchino

Regional Design of the 1920s – 1930s

- Double pitch hip roof
- Lanai and outdoor connections
- Casement windows and exterior sliding doors
- Lava rock foundations
- Masonry screens for ventilation and privacy



Pineapple Institute, University of Hawai'i



PACIFIC MODERN

PACIFIC MODERN



Marshall & Ruth Goodsill Residence, Kāhala, O'ahu



Varsity Building, Mō'ili'ili, O'ahu



Pan Am Building, Kapi'olani Blvd., O'ahu

- Expressed or exposed structure
- Fuzzy delineation of exterior and interior
- Lanai and terraces
- Variety of materials and textures
- Emergence of pre-fabricated components



Jean & Zohman Charlot House by Pete Wimberly



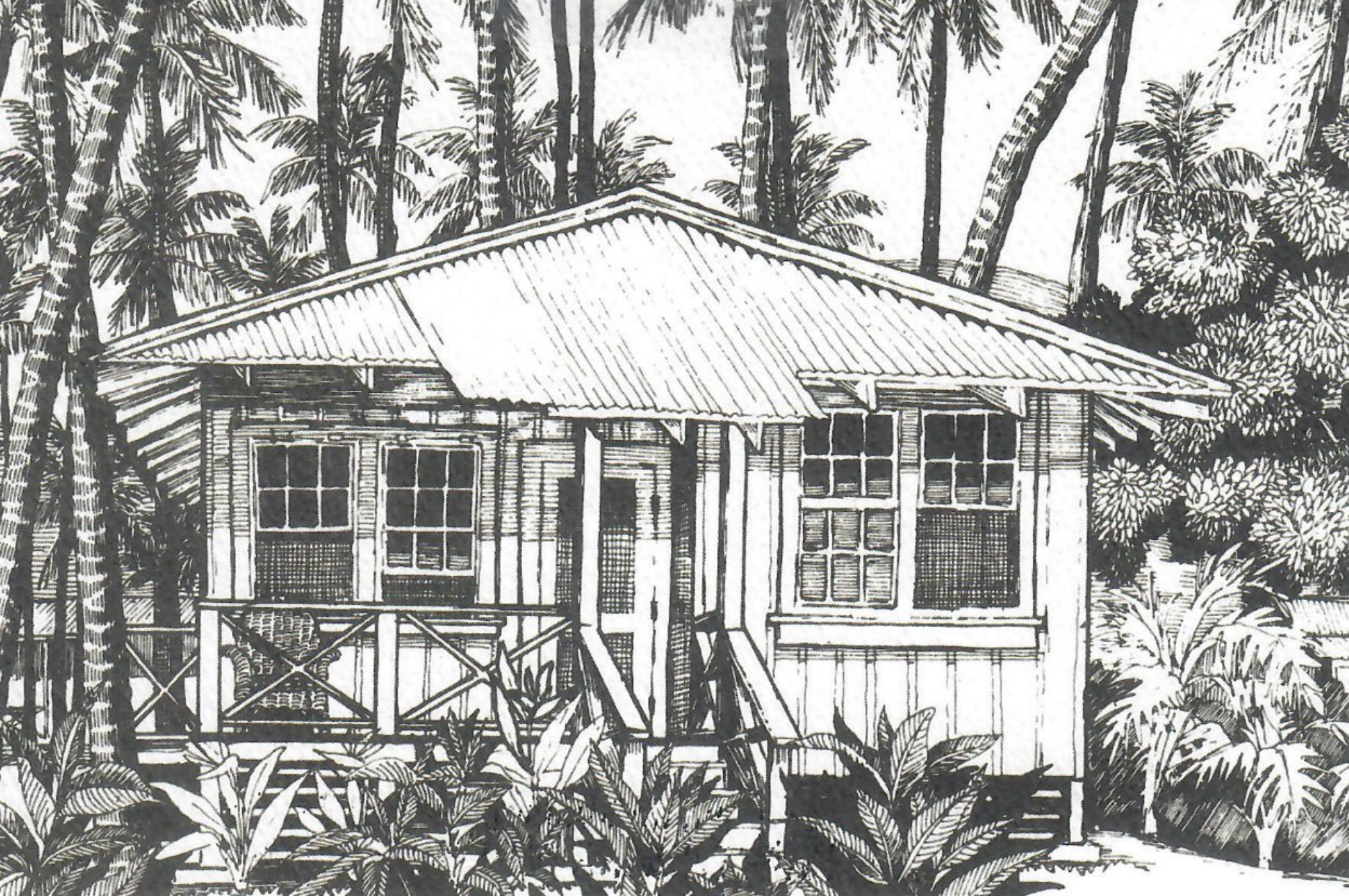
RETURN TO REGIONALISM



- High-pitched copper or green tile roofs
- Stucco or rock exterior walls
- Interior accented with ohia logs
- Koa wood cabinetry and finishes
- Stone or tile floors
- Coral stone on walls or floors
- Large pocketing doors
- Vaulted ceilings with exposed rafters



Hawaiian Studies Building, University of Hawai'i



Audience Questions and Discussion

Waimea Plantation Cottage, Kaua'i

CONTACT:

Elaine Jackson-Retondo, Ph.D.

Preservation Partnerships &

History Program Manager

National Park Service

Interior Regions 8, 9, 10, & 12

333 Bush Street, Suite 500

San Francisco, CA 94104-2828

Elaine_Jackson-Retondo@nps.gov

Office: 415-623-2368

<https://www.nps.gov/history>

Kiersten Faulkner

Executive Director

Kiersten@historichawaii.org

Office: 808-523-3900

Andrea Nandoskar

Education Program Manager

andrea@historichawaii.org

Office: 808-523-3900

Historic Hawai'i Foundation

680 Iwilei Rd. Ste. 690

Honolulu, HI 96817

Office: 808-523-2900

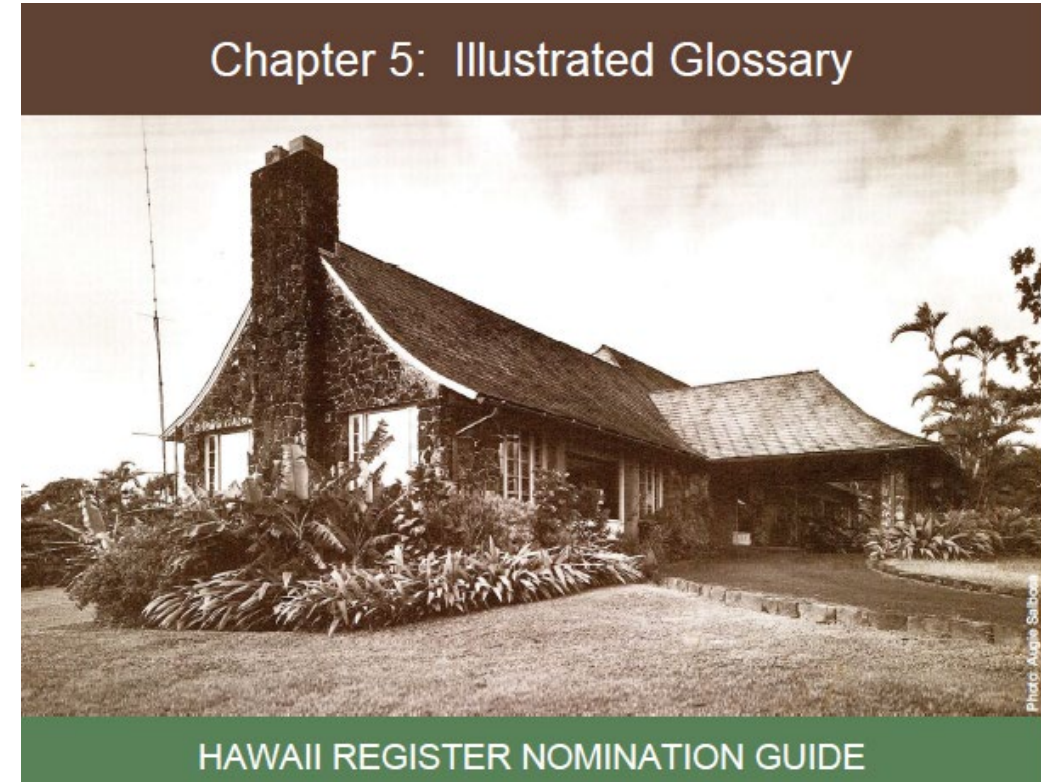
www.historichawaii.org

RESOURCES

NPS Technical Preservation Services **Brief 17: Identifying the Visual Aspects of Historic Buildings as an Aid to Preserving their Character**; <https://www.nps.gov/tps/how-to-preserve/briefs/17-architectural-character.htm>

NPS Technical Preservation Services **Treatment of Historic Properties**; <https://www.nps.gov/tps/standards/four-treatments.htm>

Historic Hawai'i Foundation "Guide of Nominating Residences to the Hawai'i Register of Historic Places" **Chapter 5 Illustrated Glossary of Architectural Elements of Style**; <https://historichawaii.org/resource-center-2/register-guide/>



HHF UPCOMING PROGRAMS

“Looking Back—Images of Home” screening of four short films and discussion with the filmmakers at Hawai‘i International Film Festival. Saturday, November 12, 2022, 2:00 p.m. HST, Doris Duke Theater at the Honolulu Museum of Art

“Places of Power, Power of Place: Presentation and Panel Discussion.” Wednesday, January 18, 2023 at the King Kamehameha V Judiciary History Center, Honolulu

36th Annual Experts Lecture Series “Hawai‘i’s Historic Cemeteries.” Thursdays, January 26 – March 2, 2023, 12:00 -1:00 p.m. HST via Zoom Webinar

MAHALO FOR
SUPPORTING THE
PROGRAMS AND
ACTIVITIES OF
HISTORIC HAWAI‘I
FOUNDATION

E-NEWSLETTER SIGN-UP

<https://historichawaii.org/newsletter-signup/>

JOIN

<https://historichawaii.org/join-us/>

GIVE

<https://www.paypal.com/paypalme/historichi>

CONTACT

Member@historichawaii.org

808-523-2900

Back up slides



Ala Moana Shopping Center and historic Ala Moana Park



Kaka'ako

CONTEMPORARY DEVELOPMENT