

HISTORIC
HAWAII
FOUNDATION



46TH ANNUAL PRESERVATION HONOR AWARDS

WEDNESDAY, JULY 22, 2020
LIVESTREAM EVENT



HISTORIC HAWAI'I FOUNDATION PRESERVATION HONOR AWARDS EXECUTIVE DIRECTOR'S MESSAGE



Aloha kākou,

As the current public health crisis from COVID-19 unfolds, all of us are working to ensure the health and safety of our communities. To do our part to slow the spread of the novel coronavirus, Historic Hawai'i Foundation cancelled or postponed public programs and in-person gatherings and reimagined the Preservation Honor Awards ceremony.

What started as an emergency measure to prevent the spread of illness has transitioned into new opportunities for a different kind of community engagement. We are excited by the benefits made possible by virtual gatherings, especially the ability to include new audiences and participants from a distance. Throughout the planning for the virtual celebration of the Awards, we were impressed by the creativity and enthusiasm for new ways to tell these stories of places saved and people engaged in heritage efforts.

The work of the honorees and the broader preservation community will ripple outward for generations, providing value to many future generations. These efforts provide places of recovery and resilience, healing and connection. Touchstones of place, connection, heritage and beauty will help people rebuild beyond these difficult times. We find inspiration from places that endure and from examples from the past of triumph over adversity.

We are appreciative of the many people represented through these preservation awards. Collectively, the Awards highlight the strength of the preservation movement in the Hawaiian Islands.

We thank and congratulate all of the honorees.

With aloha,

Kiersten Faulkner
Executive Director



ABOUT HISTORIC HAWAII FOUNDATION

Over 45 years ago, Historic Hawai'i Foundation's founders committed to an idea: that people working together can preserve, protect and celebrate historic places that tell the many stories of Hawai'i. Today, utilizing strategic advocacy, education, assistance and partnership programs, Historic Hawai'i Foundation protects places of history and culture that are essential to the quality of life in the Hawaiian Islands.

BOARD OF TRUSTEES

J. Scott Meidell, President
Ricky Ching, First Vice President
Thomas S. Witten, Second Vice President
Christine Mendes Ruotola, Secretary
Joanna Oshiro, Treasurer
Vernon Wong, At Large Officer
Jennifer Zelko-Schlueter, At Large Officer
Natalia Lagmay, Past President

STAFF

Kiersten Faulkner, Executive Director
Beth Iwata, Director of Development
Virginia Murison, Consult. Preservation Architect
Andrea Nandoskar, Education Program Manager
Michelle Kiczek, Development Assistant
John Williams, Awards Project Manager

TRUSTEES

Maenette Ah Nee Benham
Gregory C. Chun
Will Crowley
Donne Dawson
Rosemary Fazio
Pat L. Griffin
Hal Hammatt
Len Isotoff
Donna Kalama
Kekoa Kaluhiwa
Lehua Kauhane
Rick Kiefer
Tomo Kuriyama
Wendie McAllaster
Roy Murai
Jim Niess
Wendy Rice Peterson
Greg Pietsch
Lani Ma'a Lapilio, Ex Officio



HONOR AWARDS SELECTION COMMITTEE

Pat L. Griffin, Chair, Historian
Dawn N.S. Chang, Ku'iwalu
Alison Chiu, Fung Associates, Inc.
Gary Coover, Coover Consultants
Phil Deters, Community Volunteer
Kiersten Faulkner, Historic Hawai'i Foundation
Wayne Goo, Workshop HI
Kekoa Kaluhiwa, Kamehameha Schools
Lehua Kauhane, dtl Hawai'i
Jim Niess, Maui Architectural Group, retired
Christine Ruotola, G70
Katie Stephens, AHL
Adriane Truluck, AECOM
John Williams, Historic Hawai'i Foundation

EVENT COMMITTEE

Christine Ruotola, Chair, G70
Kiersten Faulkner, Historic Hawai'i Foundation
Wayne Goo, Workshop HI
Pat Griffin, Historian
Beth Iwata, Historic Hawai'i Foundation
Michelle Kiczek, Historic Hawai'i Foundation
Cheyenne Martinez-Boyette, Bank of Hawai'i
Tonia Moy, Fung Associates, Inc.

Proceeds from this event support the Preservation Honor Awards and other programs of Historic Hawai'i Foundation.

HISTORIC HAWAII FOUNDATION
IS HONORED TO RECEIVE THE
SUPPORT OF THESE SPONSORS

MAHALO NUI

LÖKAHI SPONSOR



MĀLAMA SPONSORS



SPECIAL MAHALO
to these wonderful people and organizations who helped
make this program possible.

Donors and Contributors

- Bowers & Kubota
- Daughters of Hawai'i
- Hawaiian Mission Houses and Archives
- Martin & Chock
- Minatoishi Architects
- O'ahu Cemetery & Mortuary
- Ralph S. Inouye, Inc.
- Workshop HI

Program support

- Huana Productions
- Tim Huynh Photography
- Grace Lee
- Jason Antonio
- Alexander & Baldwin
- AECOM
- Hawai'i State Archives
- John Williams
- David Franzen
- Don Hibbard
- Gary Coover
- Phil Deters
- Pat Griffin
- Adriane Truluck

Special thanks to the volunteers, staff and patrons of the historic Hawai'i Theatre Honolulu, Hawai'i.

www.hawaiitheatre.com



ABOUT THE PRESERVATION HONOR AWARDS

Historic Hawai'i Foundation's Historic Preservation Honor Awards are Hawai'i's highest recognition of projects, organizations, or individuals active in preservation, rehabilitation, restoration, or interpretation of the State's archaeological, architectural, and cultural heritage. The Preservation Honor Awards are designed to recognize achievements in interpreting, preserving or restoring Hawai'i's historic and cultural resources.

Award honorees are selected by a committee of professionals in architecture, history, planning, landscape design, architectural history and engineering. Each nomination is considered on its own merit and not in competition with others.

HONORS CATEGORIES



ACHIEVEMENT IN INTERPRETIVE MEDIA honors publically-available printed publication or visual presentation that interprets the history, preservation or physical characteristics of a historic property.



INDIVIDUAL ACHIEVEMENT recognizes a leader in the preservation field who has made achievements in preserving places significant to the history of Hawaii. Either site-specific or broad-based efforts may be identified.



ACHIEVEMENT IN NEW CONSTRUCTION distinguishes new infill in a historic district or additions to a historic property that protect and enhance the character of the historic resource.



PROGRAMMATIC AWARD honors an organization or government agency that engages in advocacy, education, programs or other activity supporting preservation efforts, either for a specific historic property or through a broad-based program.



PROJECT AWARD recognizes a specific project that preserved, rehabilitated or restored a historic property.



ANNIVERSARY RECOGNITIONS celebrate the rich history of kama'āina companies, organizations and institutions that are an important and integral part of the singular culture of the Hawaiian Islands.



THE FRANK HAINES AWARD, established in 2009 and named for master architect Frank Haines, FAIA, is presented to individuals who have demonstrated sustained and outstanding achievements in the areas of preserving the significant historic and cultural places of Hawai'i.



ACHIEVEMENT IN INTERPRETIVE MEDIA



Ford Island Interpretive Trail

Ford Island, O'ahu

The purpose of the trail is to educate and communicate an appreciation for both Hawaiian and military history, and the importance of protecting cultural resources while providing an amenity for the island residents, employees and visitors. 30 interpretive panels with photos and text are placed along a new walking and running trail that encircles the island. Some of the panels provide information about the area's geology and pre-contact Hawaiian history, and others are dedicated to the island's Navy history, defense development, and role in World War II.

- Mason Architects, Inc.
- Hunt Companies
- Commander, Navy Region Hawai'i
- InfoGrafik
- Commander, Naval Facilities Engineering Command

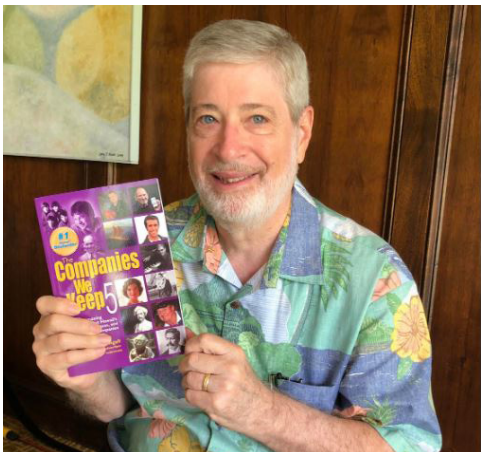


Francis Haar: Disappearing Honolulu Exhibit

A'ala & Chinatown, O'ahu

The exhibit documents the once vibrant Japanese community of A'ala plus parts of Chinatown that were ultimately demolished in the 1960s to make way for urban renewal. Francis Haar taught photography at UH Mānoa between 1965 and 1985. The exhibit was installed at the John Young Museum of Art in the fall of 2019 and consisted of original black-and-white photographs by Haar and the film, "A'ala - Life and Death of a Community."

- Gaye Chan
- Maika Pollack
- Tom Haar
- Malia Van Heukelem
- Don Hibbard
- Minatoishi Architects
- Ian Lind



Rearview Mirror newspaper column by Bob Sigall

Honolulu Star Advertiser

With Bob Sigall's weekly Rearview Mirror newspaper column for the Honolulu Star-Advertiser, readers receive detailed Hawai'i history lessons. Sigall's easy conversational writing style gently encourages readers to consider how Hawai'i has changed over the years and helps bring awareness to the sometimes-neglected architectural and historic public and private buildings, areas, Hawai'i-kine activities and hang-outs.

- Bob Sigall
- Honolulu Star Advertiser

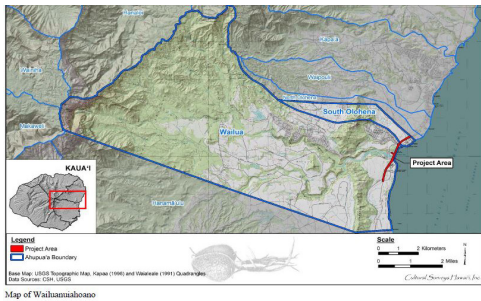


Voices Behind Barbed Wire: Stories of Hawai'i documentary

Statewide

The film explores the personal accounts of the World War II internment of Hawai'i's Japanese Americans from their initial arrest and internment in places like Kīlauea Military Camp (Hawai'i Island), Sand Island and Honouliuli (O'ahu). Information is included on all 17 of Hawai'i's known sites and is supplemented with updates on the grassroots efforts that led to Honouliuli being named a National Historic Site, under the management of the National Park Service.

- Japanese Cultural Center of Hawai'i
- Honouliuli National Historic Site
- Nisei Veterans Memorial Center
- Ryan Kawamoto, Kinetic Productions
- Kīlauea Military Camp
- Sand Island Treatment Facility



Wailua - Ke Awāwa o Nā Ali'i video

Wailua, Kaua'i

This stunning documentary presents the cultural importance of Wailuanuihō'ano, the great sacred Wailua, located on the East side of Kaua'i, along the Wailua River. Captured are the royal lineage, mo'olelo and histories of people who lived there. The video was commissioned by the Hawai'i Department of Transportation.

- Palikū Documentary Films
- Beverly Muraoka
- Kehau Kekua
- Hawai'i Department of Transportation
- Freckles Smith

Hunt is proud to support *HISTORIC HAWAII FOUNDATION* and their mission to preserve, promote respect for, and keep alive the inherent beauty of the state's historic buildings, structures, objects, sites, and districts.

We congratulate the recipients of the 2020 Preservation Honor Awards.



737 Bishop Street, Suite 2750
Honolulu, Hawai'i 96813

HuntCompaniesHawaii.com



INDIVIDUAL ACHIEVEMENT



Sharon Hayden, Volunteer, King Kamehameha I Statue

North Kohala, Hawai'i Island

Hayden has been a Kohala community volunteer for many years, and is recognized especially for her role for over 20 years as leading the preservation of the original statue of King Kamehameha I. Hayden organized the maintenance team for the care of this sculpture and has arranged for the assistance of multiple community volunteers that she has guided and trained. She sought out an art conservator to create and update a detailed manual that is a record of the condition and treatments of the statue.

- Sharon Hayden
- RLA Conservation Inc.
- North Kohala Resource Center (NKRC)



Ka'aina Shayne Hull, Director, Department of Planning

County of Kaua'i

Over the past six years as Deputy Planning Director and now as the Planning Director, Hull's commitment to preserve, honor, and commemorate architecture, artifacts and historic sites have shifted Kaua'i's conversation on historic preservation from merely an advisory role to a necessary part of the land use permitting processes. Hull's advocacy has helped save the historic County Hanapepe Bridge and the Lihu'e Post Office building.

- Ka'aina Shayne Hull
- County of Kaua'i

PBR HAWAII
& ASSOCIATES, INC.

CELEBRATING

50

EST. 1970

CONGRATULATIONS TO ALL THE
HONOREES THAT REFLECT THE
CULTURAL AND HISTORICAL
DIVERSITY OF HAWAI'I.

PBRHAWAII.COM • 1001 BISHOP STREET, SUITE 650 • HONOLULU HI 96813 • 808-521-5631
PLANNING • LANDSCAPE ARCHITECTURE • ENVIRONMENTAL STUDIES • ENTITLEMENTS/PERMITTING • GRAPHIC DESIGN



1820  **2020**
Hawaiian Mission Houses
Historic Site and Archives

The Board of Trustees of
Hawaiian Mission Houses
congratulates

Trustee Peter T. Young

on his
Individual Achievement
Award.



Thank you for your time, energy, and foresight in planning
Bicentennial Commemoration events!



Maile Melrose, Historian and Author, Amy B.H. Greenwell Ethnobotanical Garden and Kona Historical Society

Hawai'i Island

Melrose has been one of Kona's most dedicated advocates as an author, historian, and President of the Amy Greenwell Ethnobotanical Garden. She has dedicated her life and work to the preservation of Kona's history, the appreciation of the historic places and monuments throughout the North and South Kona districts, and the stories of Kona's people, places and plants. Melrose has contributed to local history with her online publication, *Maile's Meanderings*, on the Kona Historical Society website, and by guiding tours that are immersive journeys into Kona's history.

- Maile Melrose
- Friends of the Amy B.H. Greenwell Ethnobotanical Garden
- Kealakekua Ranch LTD
- Kona Historical Society

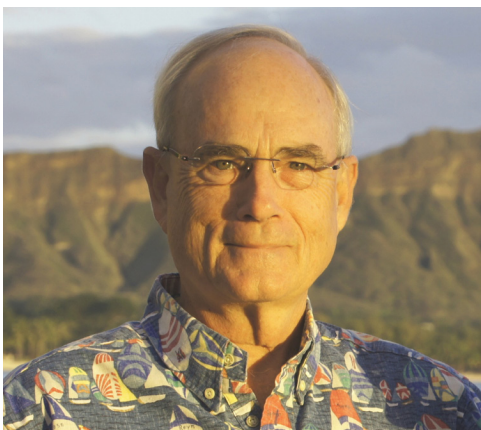


Nanette Napoleon, Cemetery Historian and Author

O'ahu and Moloka'i

Since the mid-1980s, Napoleon has led the effort to document, preserve, restore, educate, and advocate for Hawai'i's historic burial grounds on O'ahu, Maui, Moloka'i, and Lāna'i. Learning by study and practice, she has taught concerned communities appropriate means to conserve markers and burial sites and the information they contain. She consistently shares what she has learned through books, newspaper and magazine articles, television news and public interest appearances, walking tours, and one-on-one advice.

- Nanette Napoleon
- O'ahu Cemetery & Crematory
- Hawai'i Civil War Roundtable
- Hawaiian Mission Houses Historic Site and Archives



Peter T. Young, Historian and Planner

Statewide

Young has demonstrated unwavering commitment to the preservation of Hawai'i's culture and history, through both public and private service. He served as the Deputy Managing Director of Hawai'i County, Chairman of the Hawai'i Board of Land and Natural Resources, and as Hawai'i's State Historic Preservation Officer. Since 2007 he has operated Ho'okuleana LLC, a planning and consulting firm offering land use planning and environmental reviews. For years, Young has been posting historical summaries calling attention to people, places and events in Hawai'i's past.

- Peter T. Young
- Hawaiian Mission Houses Historic Site and Archives



ACHIEVEMENT IN NEW CONSTRUCTION



Diamond Head State Monument Rockfall Mitigation

Diamond Head, O'ahu

This project was to address the safety hazards from rock falls occurring along the unstable slopes of the historic visitor trail to the summit of Diamond Head Crater, while preserving the appearance of the trail. The visitor trail was constructed in 1908 by the US Army as part of Fort Ruger and is the only public pedestrian route that accesses the summit. The careful rehabilitation of the rock surfaces is an example of how a natural historic feature can be treated to prolong its life and use for public enjoyment.

- Department of Land and Natural Resources (DLNR) Engineering Division
- Prometheus Construction
- AECOM Technical Services Inc.
- DLNR Division of State Parks

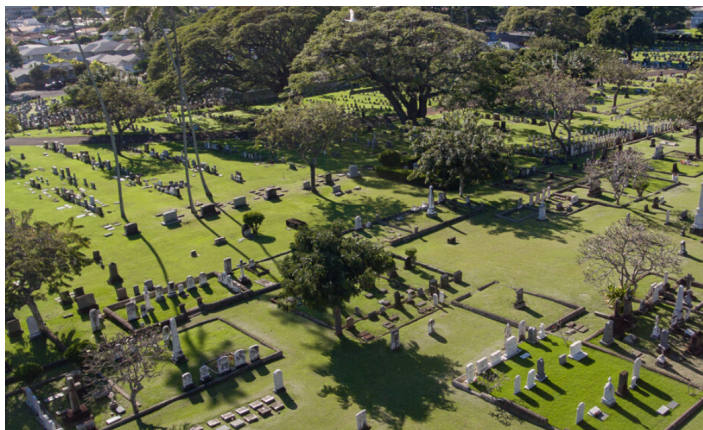


Lua Kupapa'u O Nohili Crypt at U.S. Navy Pacific Missile Range Facility

Barking Sands, Kaua'i

The coastline's cultural district has experienced erosion to the dune areas, exposing 'iwi kūpuna (human remains). The Lua Kupapa'u O Nohili crypt was constructed to preserve, protect, and appropriately handle and honor 'iwi kūpuna. The process involved a dedicated and conscientious effort by lineal and cultural descendants of the ancestors and a collaborative approach with Navy officials. Each year on the Summer Solstice, which signifies the opening of the spiritual portal, the crypt is opened. Na 'Ohana Papa O Manā takes part in an intimate ceremony to place the recently discovered 'iwi kūpuna with the previously interred remains.

- No 'Ohana Papa O Mana
- NAVFAC Pacific, US Navy
- NAVFAC Hawaii, US Navy
- Pacific Missile Range Facility, US Navy



CONGRATULATIONS TO NANETTE NAPOLEON

for receiving the well-deserved Individual Achievement Award



Mortuary and Cemetery Services
2162 Nuuanu Ave. www.OahuCemetery.com



PROGRAMMATIC AWARD



Burbank Street Neighborhood

Liliha, O'ahu

The group consists of five homeowners who made a joint commitment to preserve their neighborhood's sense of place by nominating their five residences to the Hawai'i Register of Historic Places. The residents supported and encouraged one another to achieve their common goal. They met frequently to discuss their progress in researching their homes and arranging interviews needed to prepare each Register nomination. The united effort brought the neighbors even closer together and strengthened Burbank Street's sense of place.

- Corinne Ching and Stuart Lerner
- Debbie and Sinclair Brown
- Florence and Leslie Pu'u
- Minatoishi Architects
- Robert Rietow



Hale Pili Construction and Training Program, Hawaiian Mission Houses Historic Site and Archives

Honolulu, O'ahu

The goal of the project is to build a reproduction of a hale that Governor Boki built for the new missionaries arriving as the Second Company in 1823. The new hale closely follows the descriptions by missionaries that are found in HMH's archival collection. Under the mentorship of Kumu Earl Kawa'a and Kumu Dwight Kauahikaua, students from Roosevelt High School and Kinai 'Eha, a non-profit, vocational training program, learned to construct the hale using Hawaiian culture, contextual Hawaiian language learning, and traditional hale construction methods.

- Hawaiian Mission Houses Site and Archives
- Kinai 'Eha
- Dwight Kauahikaua
- Earl Kawa'a



Ho'opai Archaeology Apprenticeship

Mākena, Maui

This program allows five hand-selected apprentices to experience and learn basic archaeological survey skills, and Hawaiian cultural knowledge of place through historical teachings and traditional mo'olelo. Apprentices learn both manual and digital survey skills using instruments from a compass and paper, to a GPS and total station. Property owner Mākena Golf and Beach Club sponsors the program as it demonstrates commitment to the community and its natural and cultural resources.

- Āina Archaeology
- Mākena Golf & Beach Club



My Name is 'Ōpūkaha'ia with Moses Goods

Statewide and Continental United States

This one-man play portrays the story of Henry Ōpūkahaia, the Native Hawaiian who travelled to New England and inspired the American Board of Commissioners for Foreign Missions to send Protestant missionaries to the Hawaiian Kingdom. This Award recognizes the primary source research and the writing and staging of an original, emotionally-powerful play that brings to life the story of a Hawaiian man who is a fundamental part of Hawai'i's history.

- Moses Goods
- Pō'ai Lincoln
- Hawaiian Mission Houses Site and Archives



'ĀINA ARCHAEOLOGY

**CULTURAL & ENVIRONMENTAL
RESOURCE MANAGEMENT**

Congratulations to all of the Historic Hawai'i Foundation winners!

725 Kapi'olani Boulevard, 4th Floor, Honolulu, Hawai'i 96813

(808) 593-3020

AinaArch.com

[@ainaarchaeology](https://www.instagram.com/ainaarchaeology)



PROGRAMMATIC AWARD CONTINUED



Mural Wall at the Nisei Veterans Memorial Center Kahului, Maui

Local artist Kirk Kurokawa created this larger-than-life mural on a bare concrete wall using ordinary house paint. He started with photos of the soldiers and reproduced them as the black-and-white originals, creating subtle yet powerful imagery. The mural is an educational resource reminding the public of a significant event in Hawai'i's history and how it impacted the Maui community. It is a reminder of what these men stood for and the sacrifices that are made as a result of war.

- Kirk Kurokawa
- Nisei Veterans Memorial Center



CONGRATULATIONS

Ferraro Choi and Associates Ltd.

*on receiving a prestigious
2020 Preservation Honor Award!*

*We are proud to have been
part of the team*



RALPH S. INOUE CO LTD
GENERAL CONTRACTOR

500 Alakawa Street #220E, Honolulu, Hawaii 96817 T(808)839-9002 F(808)833-5971

architecture · planning · lifestyle

maui architectural group inc.
www.maiarch.com

WHAT'S GONE ON BEFORE
IS AN IMPORTANT
DOOR
INDEED...
THE FLOOR
FOR WHAT'S IN STORE



PROJECT AWARDS



Ala Moana Pumping Station Screen House and Pump Station Rehabilitation

Kaka'ako, O'ahu

The project consists of the preservation, renovation and adaptive reuse of the historic 1900 Screen House and the 1940 Pump House buildings on the site of the 1900 Ala Moana Pumping Station complex. Two nationally and locally recognized significant historic structures were revitalized to create usable community facilities. The project demonstrates excellence in historic preservation in its rehabilitation of historic exterior stonework, steel doors and windows, the concrete crown molding cornice, and interior existing steel trusses.

- Hawai'i Community Development Authority
- Pacific Gateway Center
- Ferraro Choi and Associates
- WSP Buildings USA
- Libbey Heywood Inc.
- Ralph S. Inouye Co.
- Duvall Distinctive Faux Finishes



Battleship USS Missouri Memorial Aft Superstructure Preservation

Ford Island, O'ahu

The project consisted of the rehabilitation of the USS Missouri's aft superstructure which is the second tallest section, standing about 80 feet above the main deck. The project included repairing and replacing severely corroded steel, and applying protective coatings and improved rainwater drainage. The goal was to continue preserving the battleship and to prepare it for the 75th anniversary of the end of WWII on September 2, 2020.

- USS Missouri Memorial Association



F. Garcia Building Rehabilitation

Paia, Maui

This project was an ambitious undertaking to rescue the 1934 F. Garcia Building in Paia which had fallen into disrepair. Particular effort was put into restoration of the historic facade and to bring the remaining building up to current codes and serviceability. The building has been returned to a functioning, sustainable structure and regains its proper place among Upper Paia's historic building stock.

- F. Garcia LLC
- Maui Architectural Group



Lānaʻi City Housing Rehabilitation and Reconstruction

Lānaʻi City, Lānaʻi

This project consists of the rehabilitation of existing housing and the production of new infill housing that will retain and enforce the character of Lānaʻi City. This was a pineapple plantation town founded in 1924 as the one urban area on Lānaʻi. Existing houses in good condition were rehabilitated, existing houses in non-repairable condition were replicated with new houses, and compatible houses were constructed on empty lots. In total the project involves 19 homes throughout Lānaʻi City. I3ngeering

- Pūlama Lānaʻi
- MASON
- Sawar Structural Engineers
- Fukumoto Engineering
- I3ngeering



Congratulations

Lānaʻi Builders and Mason Architects for the Preservation Award honoring the restoration of plantation style homes on the island of Lānaʻi.





McKinley High School Building W Rehabilitation

Honolulu, O‘ahu

The Hawai‘i State Department of Education undertook this large scale rehabilitation project of the historic 1940 building on the campus of the oldest public high school in Hawaii. The scope included restoring the glazed terra cotta artwork, replicating historic wood windows, and extensive interior improvements. The project is the first thorough repair work on the building since it was constructed. Building W was designed by Vladimir Ossipoff with architect Louis E. Davis, and is on the Hawai‘i and National Register of Historic Places.

- McKinley High School
- Hawai‘i Department of Education
- MASON
- Bowers and Kubota
- Coffman Engineers, Inc.
- Environmeteo Services, Inc.
- J. Uno & Associates, Inc.
- Jonelle Oshiro
- Martin & Chock, Inc
- Ralph S. Inouye



Palm Circle Rehabilitation of Two Residences

Ft. Shafter, O‘ahu

These two residences followed the Army's standard Quartermaster's house plan at the time but were customized for Hawai‘i with wrap-around lanai and maids' quarters. Built in 1907, the goal was to restore the homes' exteriors and interiors to their 1930s appearance while modernizing amenities such as updated kitchen, bathrooms, and air conditioning. New kitchen cabinets were built to match existing cabinets, and windows and doors were rebuilt precisely as the originals.

- U.S. Army Garrison – Hawai‘i
- Lendlease (Development and Construction)
- Fung Associates
- InSynergy Engineering

Proud partner of the U.S. Military

We're committed to economic, safe and sustainable places for our service members and their families.

www.lendlease.com

Lendlease / Hawaii Office • P.O. Box 30208
Honolulu, HI 96820 • 808.687.8300

lendlease

REDEFINING PRESERVATION.
ONE STORIED PLACE AT A TIME.



119 Merchant Street, Suite 501 | 808.536.0556 | MASONARCH.COM



500 Alakawa Street #220E, Honolulu, Hawaii 96817 T(808)839-9002 F(808)833-5971

CONGRATULATIONS

To Mason Architects Inc.

*on receiving a prestigious
2020 Preservation Honor Award!*

*We are proud to have been
part of the team*



RALPH S. INOUE CO LTD
GENERAL CONTRACTOR

Special Thanks

To the McKinley High School
Building W Renovation team. We enjoyed being
part of the project.

We look forward to students returning to the
beautiful historic building this fall.



MARTIN & CHOCK, INC.
CONSULTING STRUCTURAL ENGINEERS
1132 Bishop St, Suite 1550, Honolulu, Hawaii 96813
Ph 808 521-4513 Fax 808 531-4508
www.martinchock.com





Congratulations

to all recipients of
**Historic Hawaii Foundation's
2020 Preservation Honor Awards**

Mahalo for all that you do for
Historic Preservation!

ahl.



Hawaiian Mission Houses
congratulates all the 2020
Preservation Award winners,
with special thanks to our
collaborators
Kumu Earl Kawa'a,
Kumu Dwight Kauahikaua,
Kinai 'Eha, Playwright/Actor
Moses Goods, and Performer
Pō'ai Lincoln.

We have reopened—come visit us on site and online!
www.missionhouses.org



BOWERS + KUBOTA

94-408 Akoki Street
Suite 201-A
Waipahu, Hawaii 96797
Phone: 808-836-7787
www.bowersandkubota.com

- Construction Management
- Architectural/Engineering Design
- Project Management
- Planning

ANNIVERSARY RECOGNITIONS

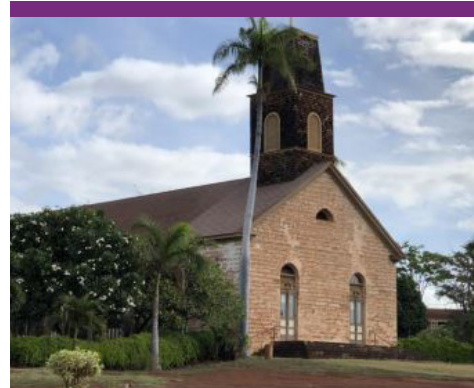


200 YEARS

BICENTENNIAL ANNIVERSARY



Hawaiian Mission Houses Historic Site & Archive/
Hawaii Missionary Children's Society



The Waimea Mission Church



Mokuaikaua Church



Kawaiaha'o Church

Queen Emma
SUMMER PALACE

Visit this historic house museum,
former summer home of
Queen Emma of Hawai'i

2913 Pali Hwy, Honolulu, HI 96817 | (808) 595 6291 | DaughtersOfHawaii.org

175 YEARS

DODRANSBICENTENNIAL ANNIVERSARY



Kaniakapupu, Summer Residence of King Kamehameha III and Queen Kalama, Nu'uuanu, O'ahu

150 YEARS

SESQUICENTENNIAL ANNIVERSARY



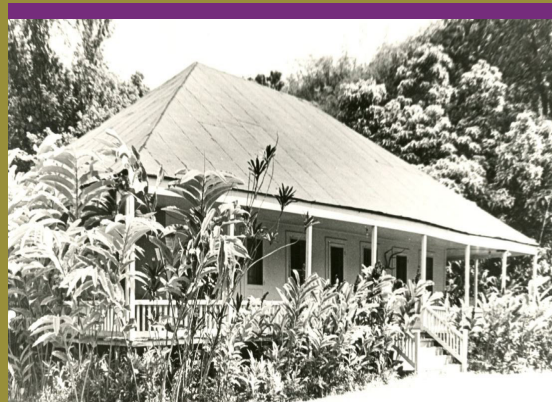
Alexander & Baldwin
Honolulu, O'ahu

125 YEARS

QUASQUICENTENNIAL
ANNIVERSARY



Pacific Hall at Bishop Museum
Honolulu, O'ahu



Charles Gay Residence
Waimea, Kaua'i

100 YEARS

CENTENNIAL ANNIVERSARY



Kamehameha Highway, O'ahu



Cooke Foundation, Limited
Statewide



Hawaiian Mission Academy
Honolulu, O'ahu



Ishiharaya
Waipahu, O'ahu



Honolulu Community College, O'ahu



Kamehameha Schools Song Contest
Hawaii'i, Maui, and O'ahu



Straub Medical Center
Hawaii'i, Kaua'i, Lāna'i, Maui, and O'ahu

The Leaders of Tomorrow.



Kamehameha Schools®

f @ t ksbe.edu

Our children have the power to change the world. By connecting keiki to their roots, nurturing their dreams and encouraging them to use their voice, we know they will create a brighter future for us all.

Hānai i ke keiki, ola ka lāhui



Congratulations!

Hawai'i Historic Foundation
2020 Preservation
Awardees

ARCHITECTURE
CIVIL ENGINEERING
INTERIOR DESIGN
PLANNING & ENVIRONMENT
G70.DESIGN



KUALOA RANCH MASTER PLAN

HILTON HAWAIIAN VILLAGE MASTER PLAN

HANAUMA BAY EDUCATION CENTER



12TH ANNUAL FRANK HAINES AWARD



DAVID FRANZEN, FRANK HAINES AWARD FOR LIFETIME ACHIEVEMENT HONOREE

Statewide

David Franzen was born in Boston and raised in New York City, where he began his career as an apprentice of Ezra Stoller, a renowned architectural photographer. In 1973, he started Franzen Photography and continued to work out of New York. After completing assignments around the country and establishing his name in travel, architectural and interior photography, David relocated to Hawai'i in 1978. While the body of his work expanded through editorial, documentary and corporate projects, the foundation of his business has remained architecture and interior design.

David's beautiful images have appeared in countless advertisements, books and magazines around the world. His published works include the books, *The Art of Mauna Kea* and *The View From Diamond Head*, calendars for the Department of Land and Natural Resources, and booklets for Historic Hawai'i Foundation.

Most recently, David has announced that he will donate his work to the Hawai'i State Archives, helping to promote the understanding, appreciation and preservation of Hawai'i's history, aesthetics and architecture. The Library of Congress also has on file over 5,000 of his images in its Historic American Buildings Survey/ Historic American Engineering Record/ Historic American Landscapes Survey Collection.

The Haines Award was established in 2009 and named for master architect Frank Haines, FAIA. It is presented to individuals who have demonstrated sustained and outstanding achievements in the areas of preserving the significant historic and cultural places of Hawai'i.



**Hulihe'e
PALACE**

Visit this historic house museum,
dedicated to preserving the rich
legacy of Hawai'i's monarchy

75-5718 Ali'i Dr., Kailua-Kona, HI 96740 | (808) 329 1877 | DaughtersOfHawaii.org

Ho'omaika'i to all 2020 Preservation Honorees



Haleakala Ranch Company congratulates
the Preservation Honor Awardees
for their contributions to the preservation of our culture
and cherished places.





CONGRATULATIONS

2020 PRESERVATION AWARD PARTICIPANTS!



FUNG ASSOCIATES, INC.

<http://www.funghawaii.com>

architecture ■ preservation ■ planning ■ interiors



Congratulations!
To the Burbank Neighborhood and
Francis Haar Project
on receiving a prestigious
2020 Preservation Honor Award!

We're proud to have been
part of the team!

Minatoishi Architects
Architecture
Interiors
Preservation
8(a)
Women-Owned
Small Business
Award-Winning





680 Iwilei Road, Suite 690
Honolulu, Hawai'i 96817
www.historichawaii.org