

HALE'IWA SPECIAL DESIGN DISTRICT AND HISTORIC PROPERTY GUIDELINES

HISTORIC HAWAI'I FOUNDATION

2019



HISTORIC HAWAI'I FOUNDATION

Founded in 1974, Historic Hawai'i Foundation is a membership-based, statewide non-profit organization that encourages the preservation of historic buildings, sites, objects and districts relating to the history of Hawai'i.

We help people save Hawai'i's historic places.

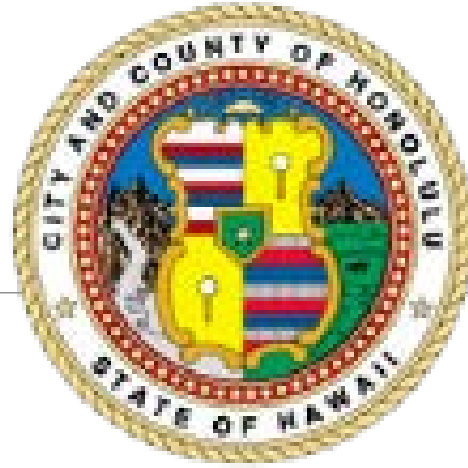


Haleiwa Main Street (HMS) dba North Shore Chamber of Commerce (NSCOC) was started in 1985 and then became Haleiwa Main Street in 1989.

Its purpose is to promote, maintain, and encourage the historic, cultural, civic and economic welfare of the North Shore district through research, education, advocacy, and other related activities.

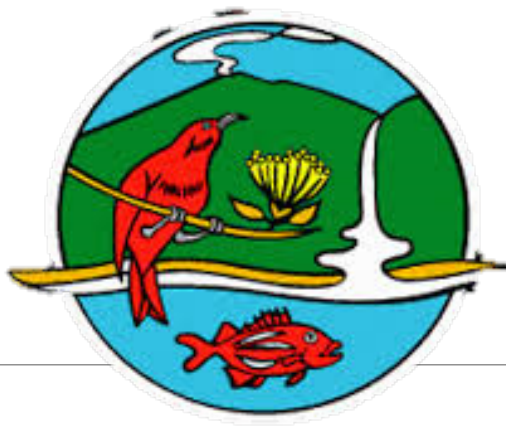
The Chamber serves to unite members of the North Shore business, agriculture, manufacturing, and residential communities to work in a spirit of cooperation to address – and solve – issues facing its community.

Economic development through historic preservation.



City & County of Honolulu Department of Planning and Permitting

DPP is responsible for the City and County of Honolulu's long-range planning, community planning efforts, administration and enforcement of ordinances and regulations governing the development and use of land, various codes pertaining to the construction of buildings, and City standards and regulations pertaining to infrastructure requirements.



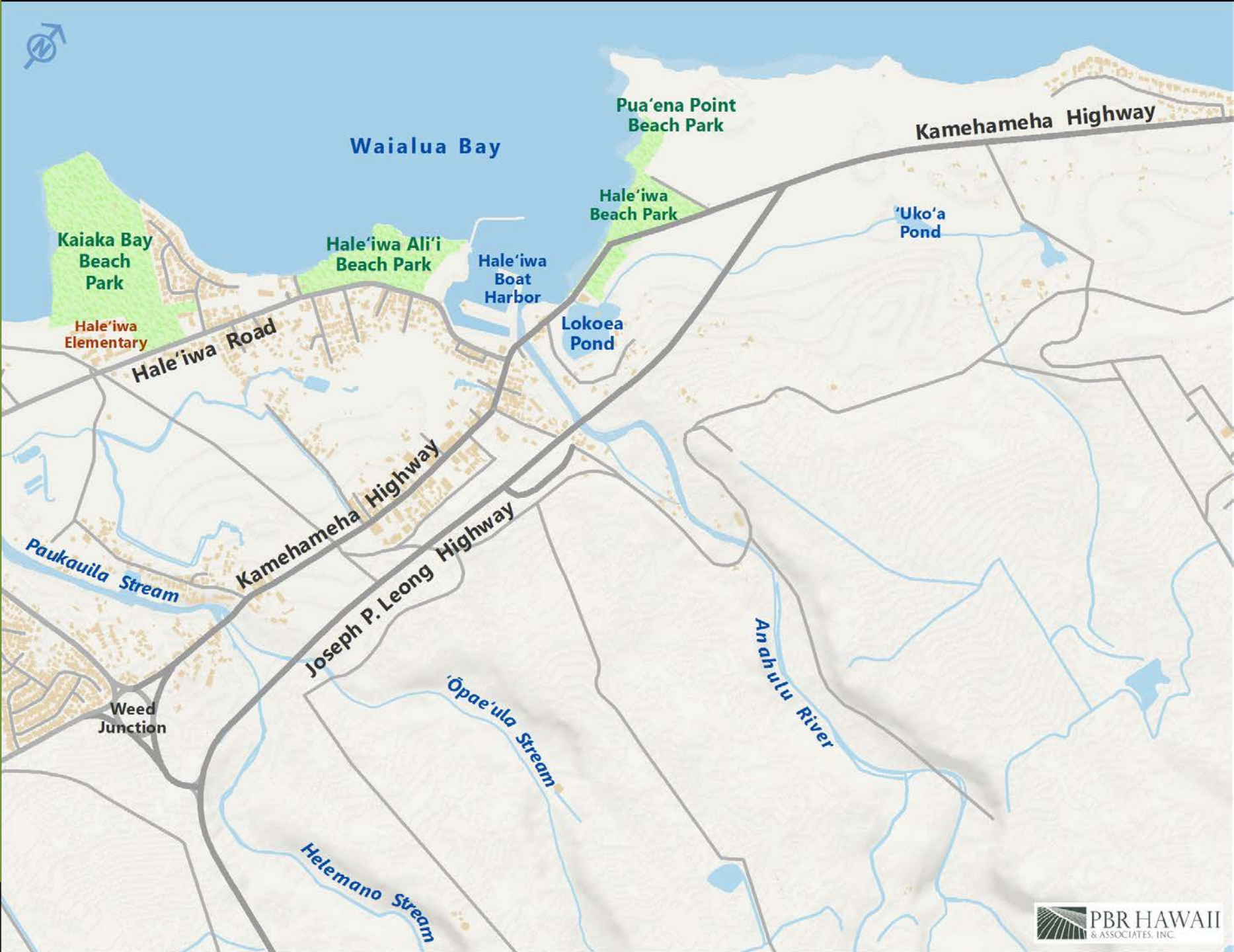
State of Hawai'i
Department of Land & Natural Resources/Historic Preservation Division

SHPD serves to protect and preserve historic properties significant to Hawai'i's history through several program areas. These program areas include: Review and Compliance under Hawaii Revised Statutes (HRS) 6E and National Historic Preservation Act (NHPA) Section 106, Burial Regulation, Hawaii and National Register, Certified Local Government, and Outreach.

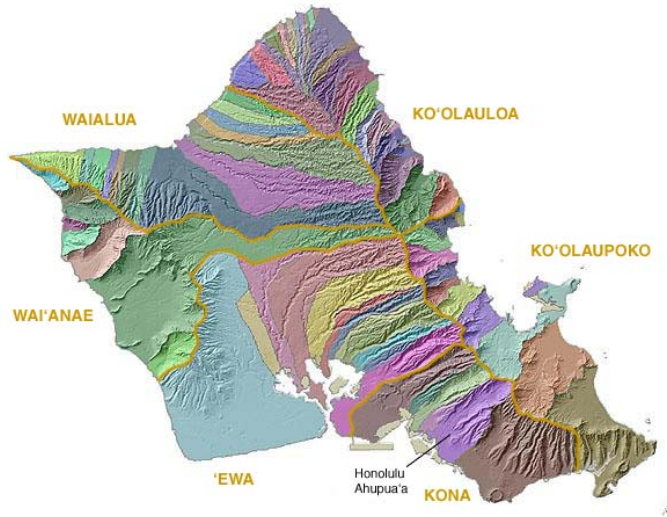
SHPD is organized into four branches to manage these program areas:
Administration, Archaeology, History and Culture, and Architecture.

SHPD strives to ensure that negative impacts to historic properties are avoided or lessened so that future generations may also enjoy and appreciate historically significant districts, sites, objects, structures, and buildings.

HALEIWA OAHU



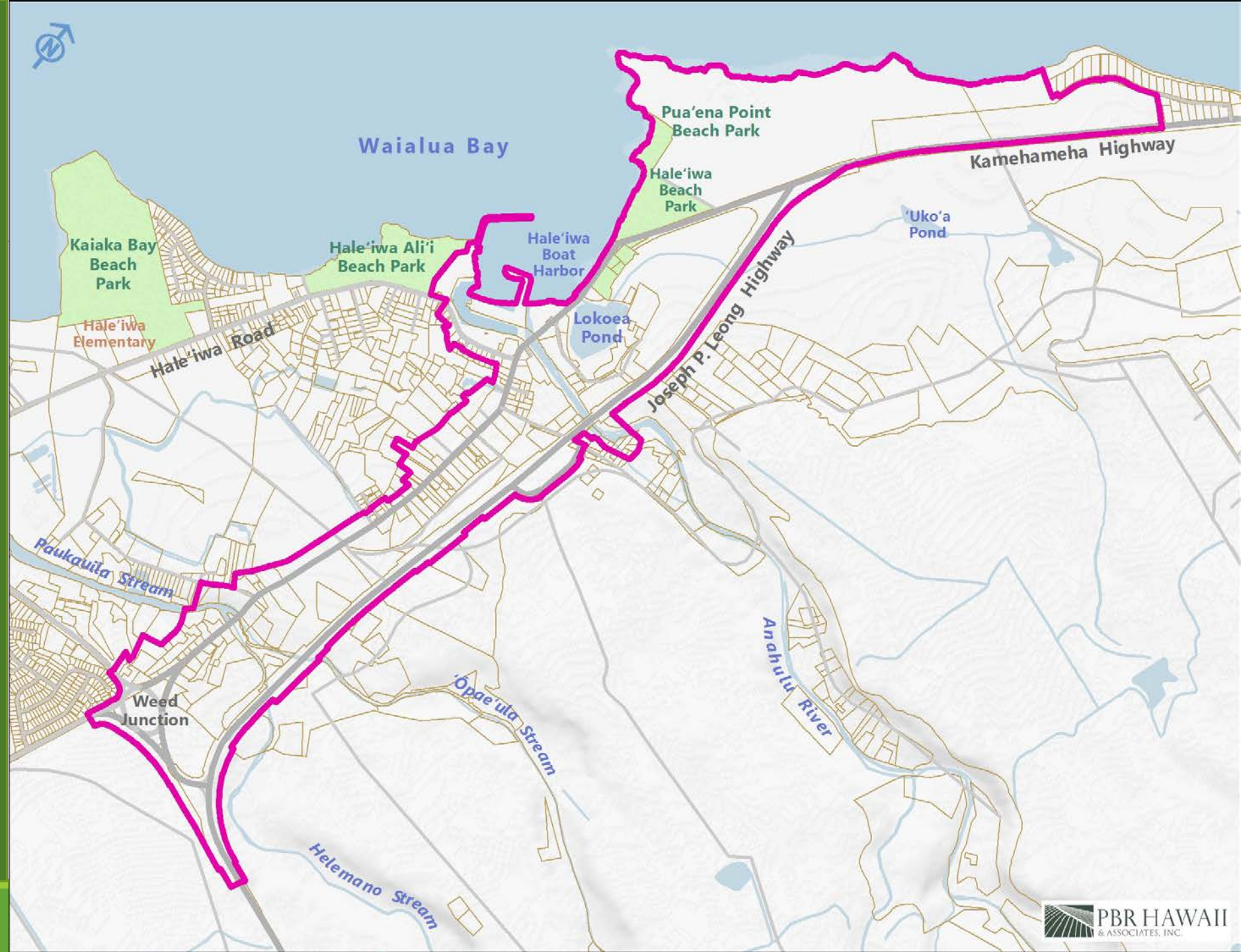
CITY & COUNTY OF HONOLULU



- Land Use Ordinance: ROH Chapter 21
- Special Design Districts: Article 9

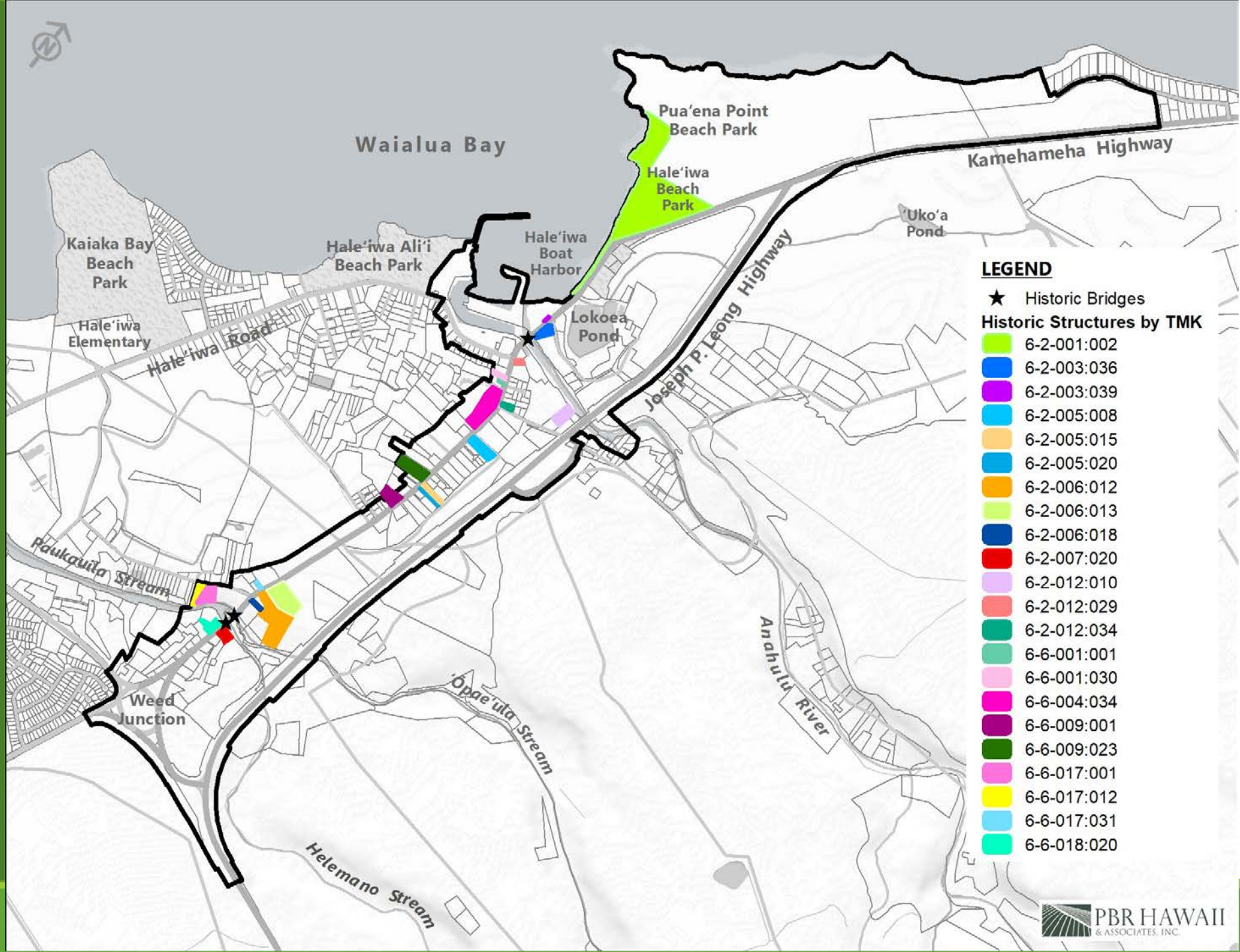
HALEIWA SPECIAL DESIGN DISTRICT

Revised Ordinances of
Honolulu §21-9.90

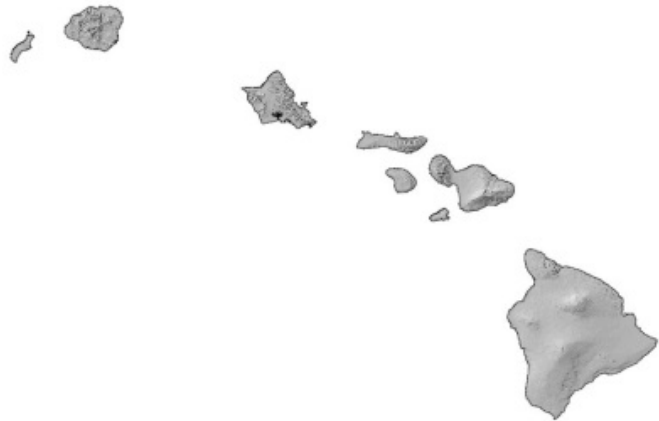


HALEIWA SPECIAL DESIGN DISTRICT

Revised Ordinances of
Honolulu §21-9.90



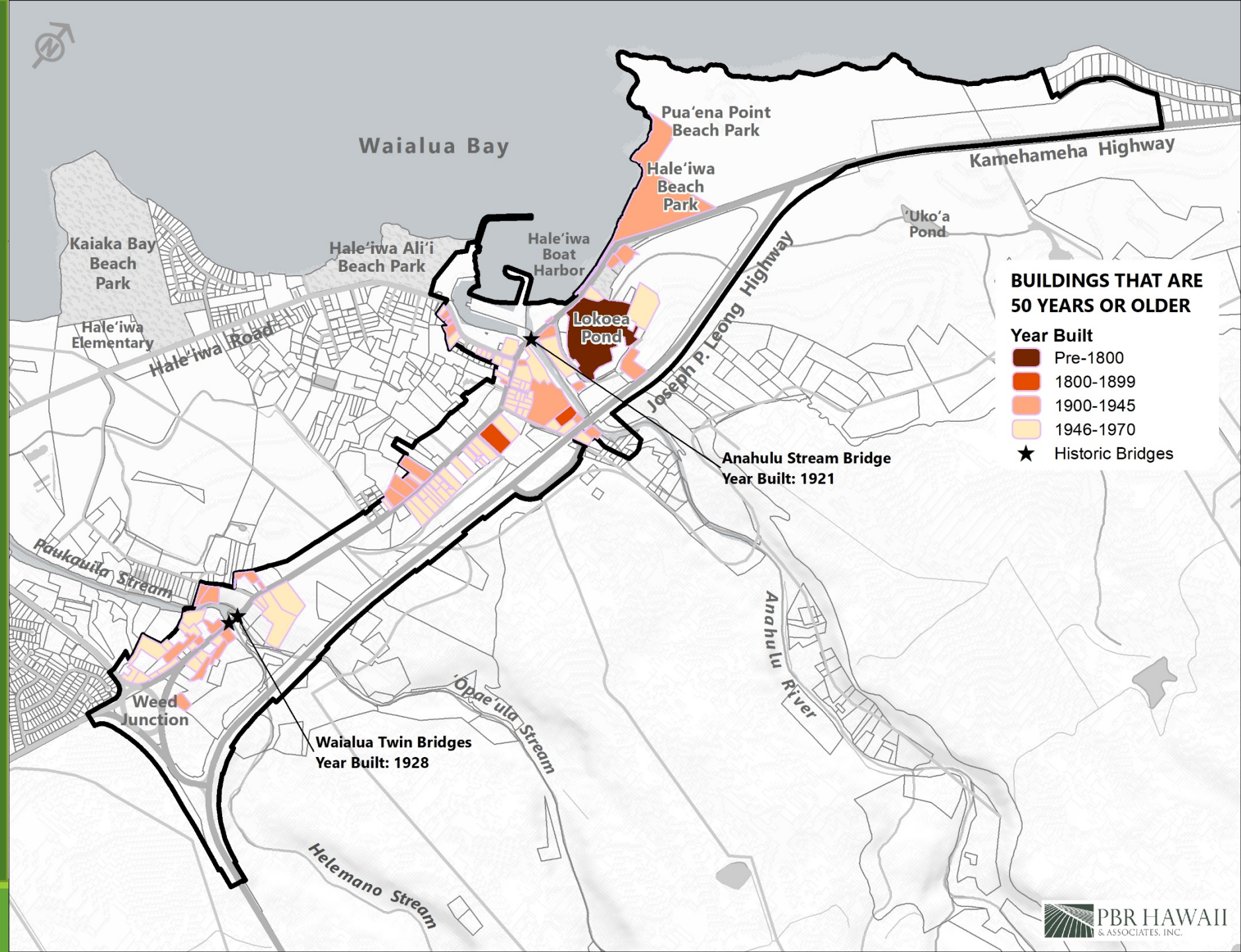
STATE OF HAWAII



- ❑ **Historic Property 50 Years or Older** (HRS 6E-2)
- ❑ **Significant Historic Property/Eligible Historic Property** (HAR 13-275, 13-284 and 13-198)
- ❑ **Hawaii Register of Historic Places** (designated by the Hawaii Historic Places Review Board; HRS 6E-5.5 & HAR 13-198)

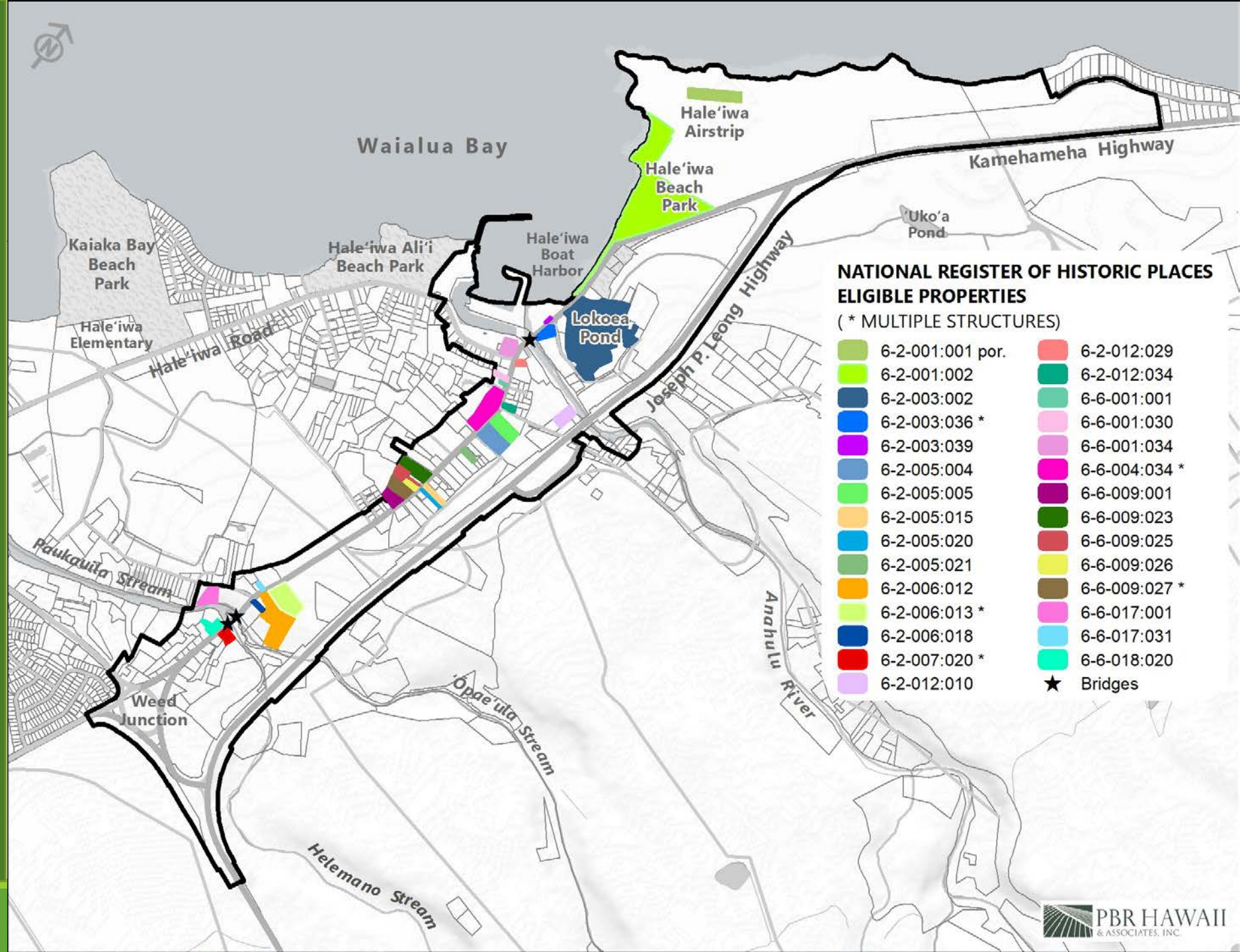
PROPERTIES 50 YEARS AND OLDER

Hawaii Revised Statutes
6E-2



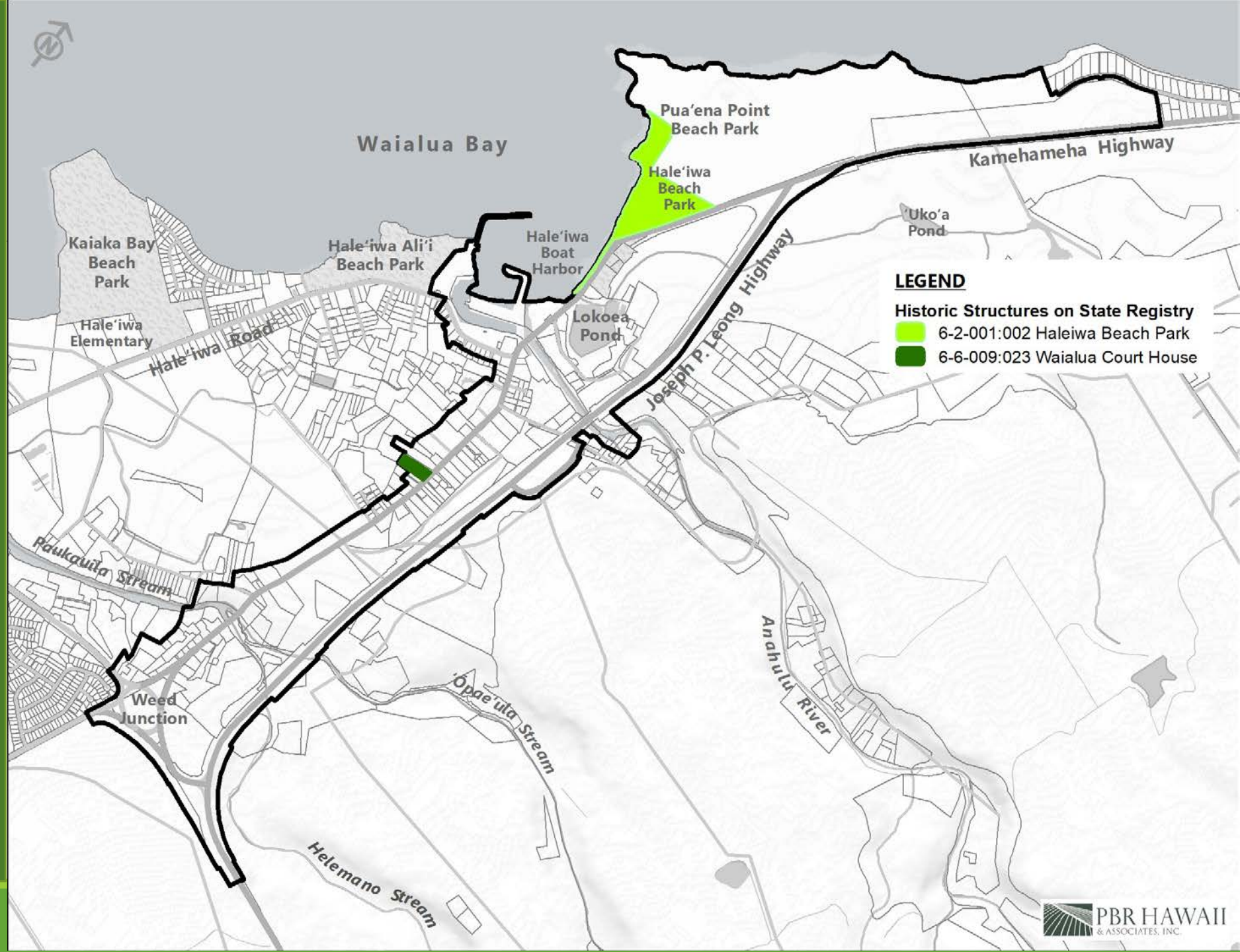
SIGNIFICANT HISTORIC PROPERTIES

Hawaii Administrative Rules
13-275, 13-284 and 13-198



HAWAII REGISTER OF HISTORIC PLACES

HRS 6E-5.5 & HAR 13-198



HISTORIC HAWAII FOUNDATION & HALEIWA MAIN STREET SEMINARS

September 10, 2019

Hale'iwa Zoning & Special District Design Guidelines

9:30 a.m. to 11:30 a.m.

Hale'iwa Gym, 66-434 Kamehameha Hwy

October 30, 2019

Historic Designation & Tax Incentives for Preservation

9:30 a.m. to 11:30 a.m.

Hale'iwa Gym, 66-434 Kamehameha Hwy



REGISTER:

<https://historichawaii.org/2019/08/06/haleiwaseminars/>

MAHALO!

- Maps:
 - PBR Hawaii
- Historic Research:
 - City & County of Honolulu Land Use Ordinance Haleiwa Special District & Design Guidelines, 1991
 - Nominations to Hawai'i Register of Historic Places, 1980 & 1988
 - Haleiwa Main Street Walking Tour of Haleiwa, 2009
 - Hawaii Department of Transportation Historic Bridge Inventory, 2013
 - Lokoea Fishpond Archaeological Survey by TCP Hawaii for Kamehameha Schools, 2014
 - Haleiwa Historic Inventory Survey for North Shore Chamber of Commerce by Mason Architects, 2016
 - Haleiwa Improvement District Project, Architectural Resource Inventory Survey (ARIS) by Kalani Pāhoa for RM Towill & City & County of Honolulu, 2017