

HALE'IWA SPECIAL DESIGN DISTRICT AND HISTORIC PROPERTY GUIDELINES

HISTORIC HAWAI'I FOUNDATION

2019

A solid green horizontal bar at the bottom of the page.

HISTORIC HAWAI'I FOUNDATION

Founded in 1974, Historic Hawai'i Foundation is a membership-based, statewide non-profit organization that encourages the preservation of historic buildings, sites, objects and districts relating to the history of Hawai'i.

We help people save Hawai'i's historic places.



Haleiwa Main Street (HMS) dba North Shore Chamber of Commerce (NSCOC) was started in 1985 and then became Haleiwa Main Street in 1989.

Its purpose is to promote, maintain, and encourage the historic, cultural, civic and economic welfare of the North Shore district through research, education, advocacy, and other related activities.

The Chamber serves to unite members of the North Shore business, agriculture, manufacturing, and residential communities to work in a spirit of cooperation to address – and solve – issues facing its community.

Economic development through historic preservation.



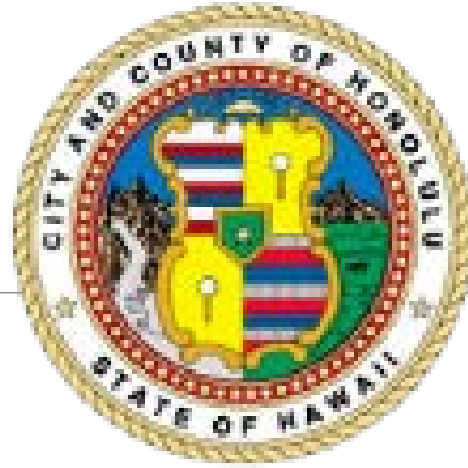
State of Hawai'i

Department of Land & Natural Resources/Historic Preservation Division

SHPD serves to protect and preserve historic properties significant to Hawai'i's history through several program areas. These program areas include: Review and Compliance under Hawaii Revised Statutes (HRS) 6E and National Historic Preservation Act (NHPA) Section 106, Burial Regulation, Hawaii and National Register, Certified Local Government, and Outreach.

SHPD is organized into four branches to manage these program areas:
Administration, Archaeology, History and Culture, and Architecture.

SHPD strives to ensure that negative impacts to historic properties are avoided or lessened so that future generations may also enjoy and appreciate historically significant districts, sites, objects, structures, and buildings.



City & County of Honolulu

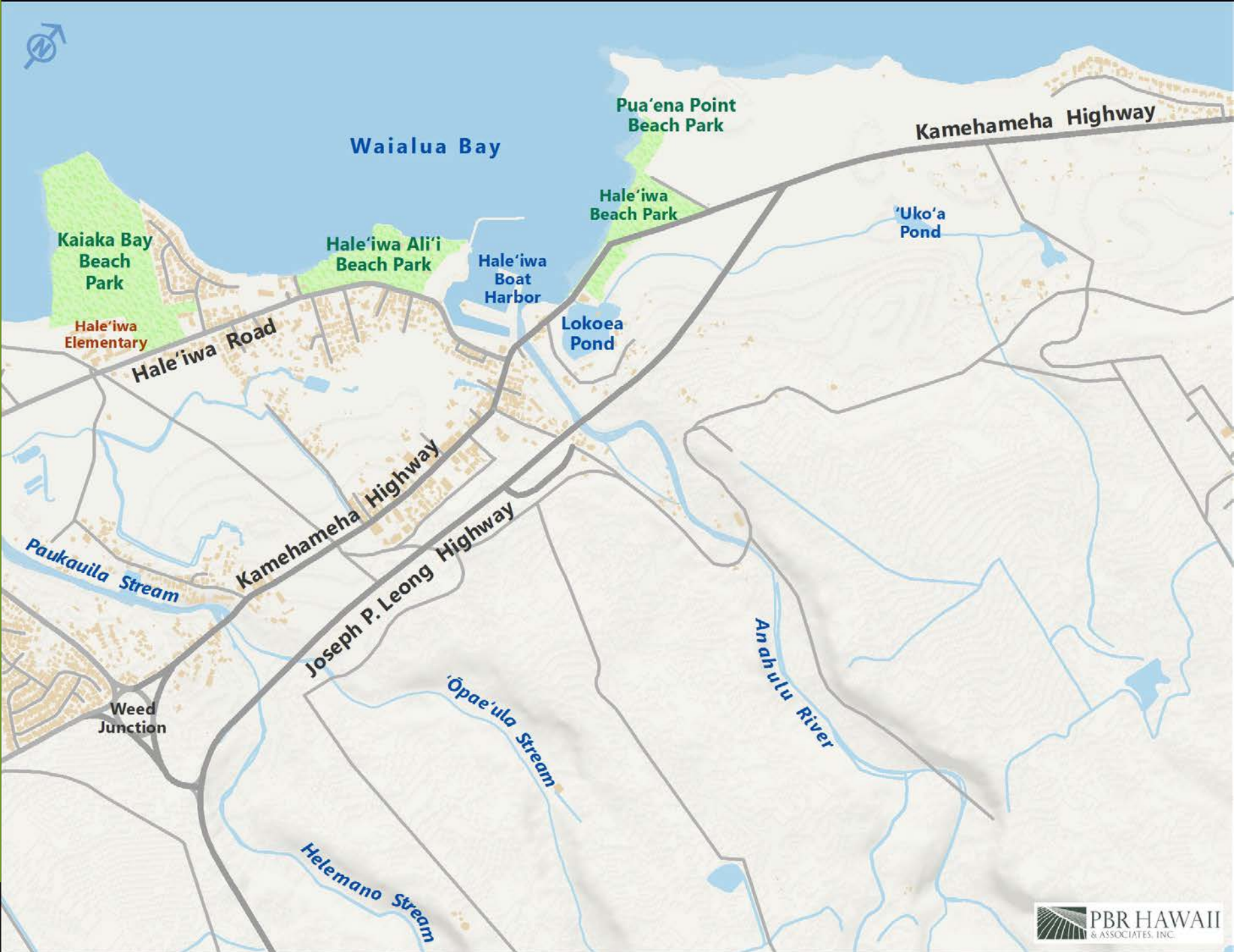
Real Property Assessment Division, Dept. of Budget & Fiscal Services

The Real Property Assessment Division administers provisions of Chapter 8, Revised Ordinances of Honolulu, relating to the assessment of real property for tax purposes. It ensures real property assessment values are fair and equitable, based on market value and in accordance to applicable standards and laws

Website: <https://www.realpropertyhonolulu.com/>

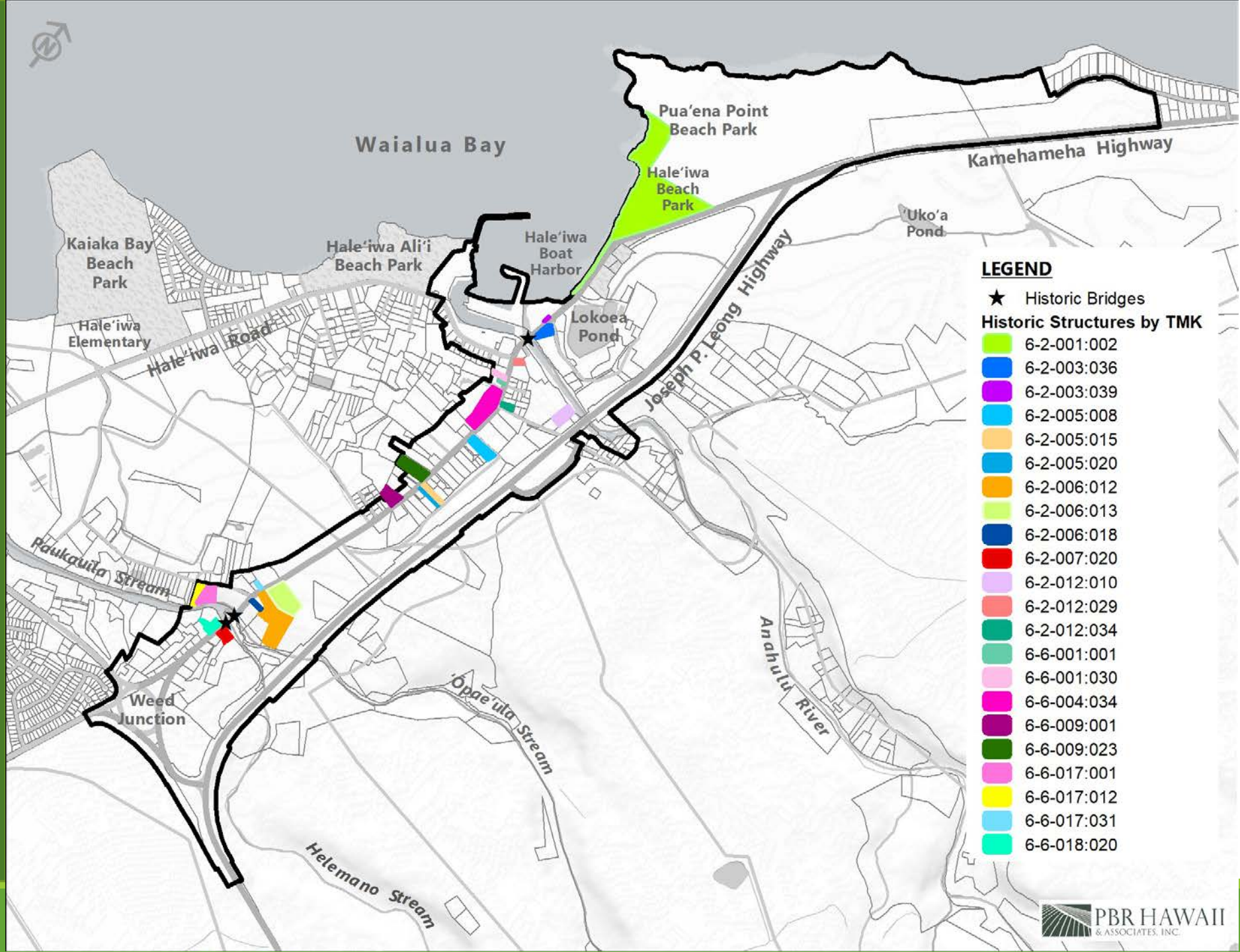
<https://www.realpropertyhonolulu.com/dedications/historic-property-dedicated-for-preservation/>

HALEIWA OAHU

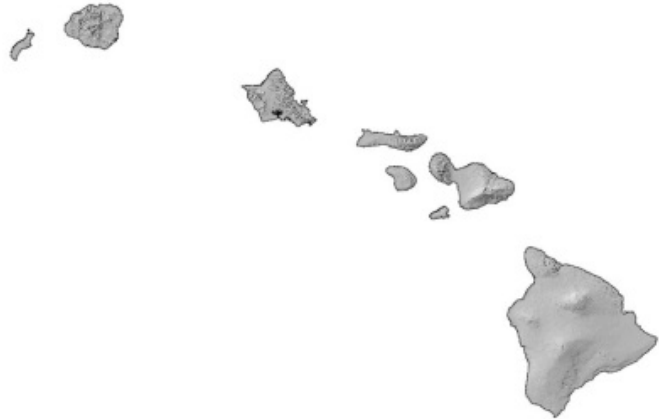


HALEIWA SPECIAL DESIGN DISTRICT

Revised Ordinances of
Honolulu §21-9.90



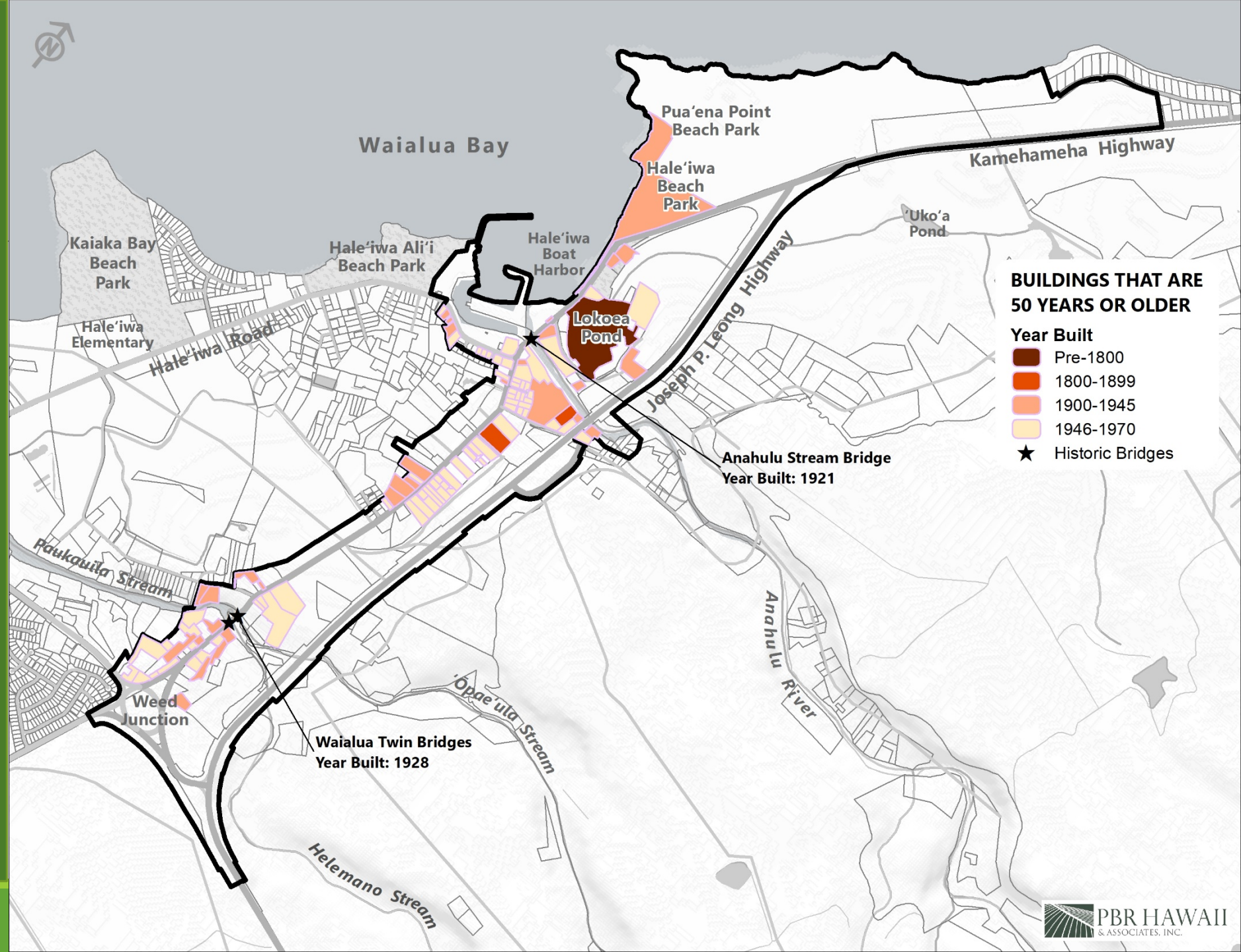
STATE OF HAWAII



- ❑ **Historic Property 50 Years or Older** (HRS 6E-2)
- ❑ **Significant Historic Property/Eligible Historic Property** (HAR 13-275, 13-284 and 13-198)
- ❑ **Hawaii Register of Historic Places** (designated by the Hawaii Historic Places Review Board; HRS 6E-5.5 & HAR 13-198)

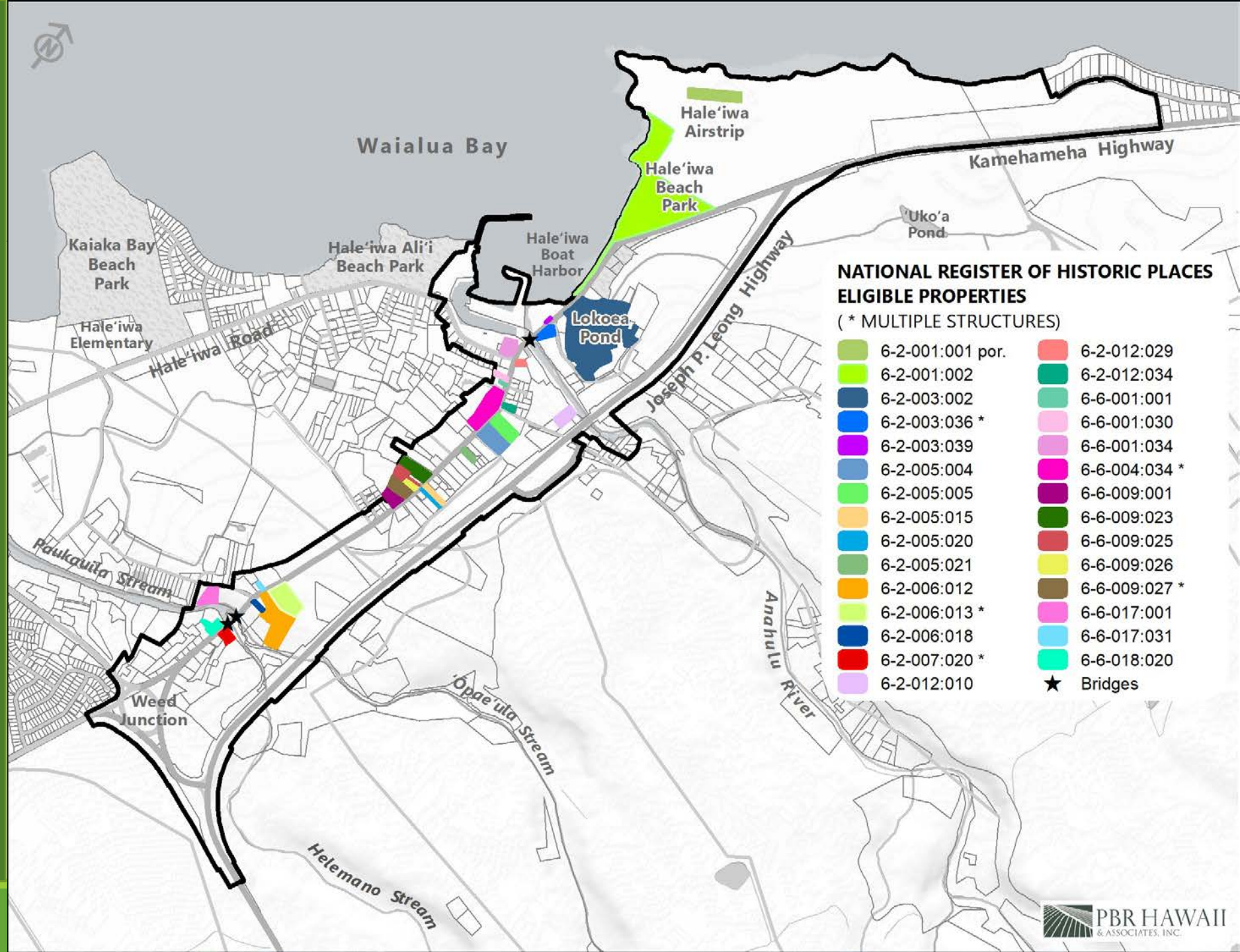
PROPERTIES 50 YEARS AND OLDER

Hawaii Revised Statutes
6E-2



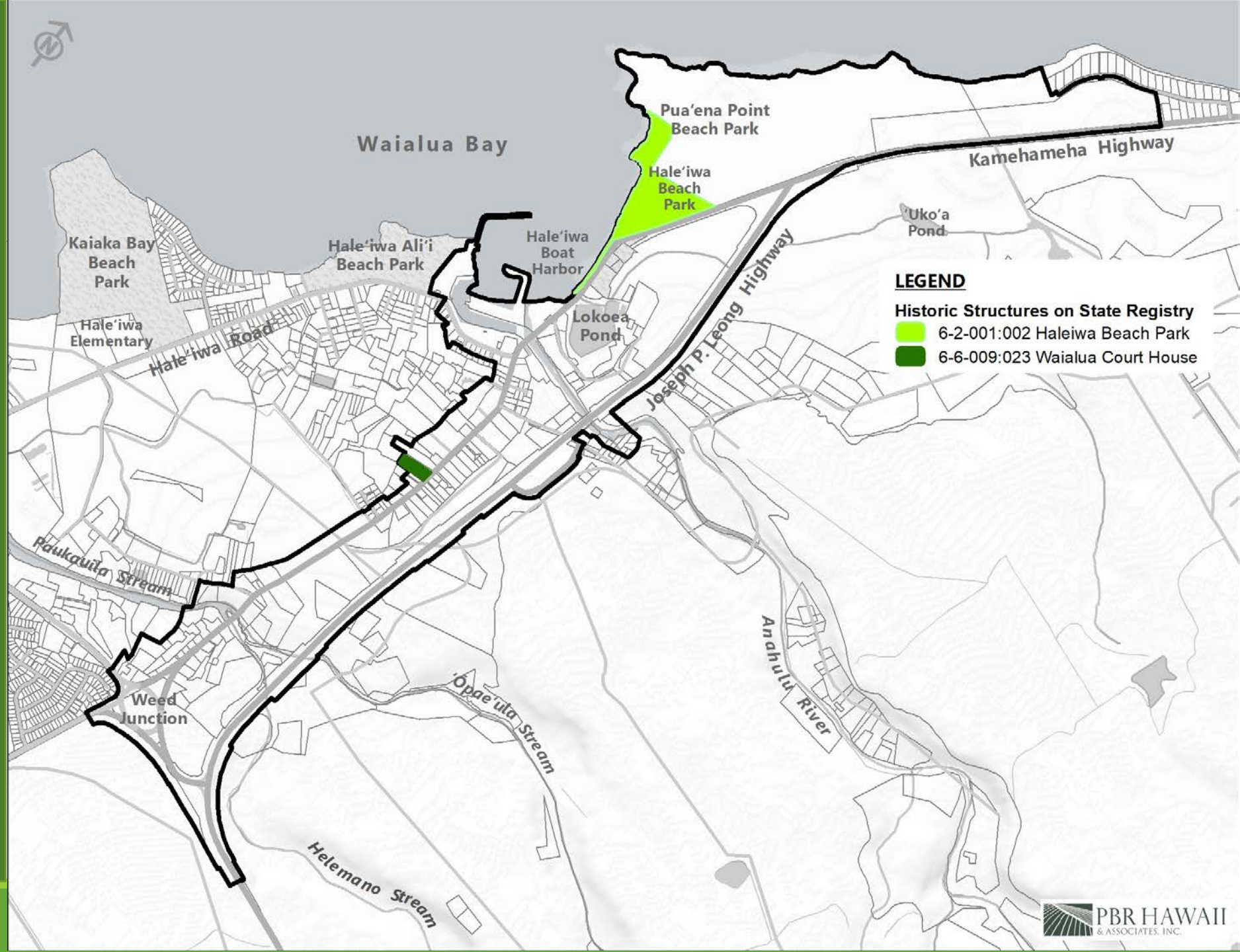
SIGNIFICANT HISTORIC PROPERTIES

Hawaii Administrative Rules
13-275, 13-284 and 13-198



HAWAII REGISTER OF HISTORIC PLACES

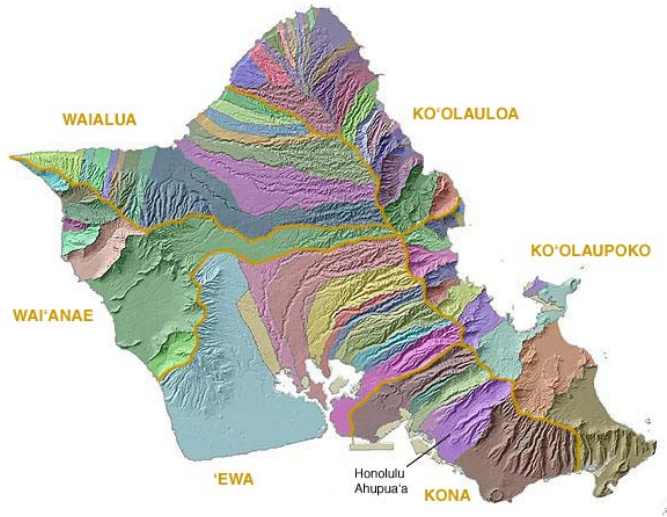
HRS 6E-5.5 & HAR 13-198



MAHALO!

- Maps:
 - PBR Hawaii
- Historic Research:
 - City & County of Honolulu Land Use Ordinance Haleiwa Special District & Design Guidelines, 1991
 - Nominations to Hawai'i Register of Historic Places, 1980 & 1988
 - Haleiwa Main Street Walking Tour of Haleiwa, 2009
 - Hawaii Department of Transportation Historic Bridge Inventory, 2013
 - Lokoea Fishpond Archaeological Survey by TCP Hawaii for Kamehameha Schools, 2014
 - Haleiwa Historic Inventory Survey for North Shore Chamber of Commerce by Mason Architects, 2016
 - Haleiwa Improvement District Project, Architectural Resource Inventory Survey (ARIS) by Kalani Pāhoa for RM Towill & City & County of Honolulu, 2017

CITY & COUNTY OF HONOLULU



- Land Use Ordinance: ROH Chapter 21
- Special Design Districts: Article 9

HALEIWA SPECIAL DESIGN DISTRICT

Revised Ordinances of
Honolulu §21-9.90

