



Democracy By Design



Lāhainā, i ka Malu 'Ulu o Lele: The Nation's First Capitol

An illustrated presentation by Ronald Williams Jr. PhD

Architecture Space / Relationships

Best practices include “**essential knowledge based on deep experience.**”
—AIA, *Architect’s Handbook of Professional Practice*, 15th edition.

I ka Wā Mamua, ka Wā Mahope

Kahuna Kuhikuhi Pu‘uone - seer, soothsayer, necromancer,
especially a class of priest who advised concerning building and
locating of temples, homes, fish ponds, hence a professional architect.

—Pukui/Elbert Hawaiian Dictionary 1957

Kaiakea, the architect, the source of Kamehameha's victories

Kaiakea, chief of the island of Molokai, was counted in ancient times in Hawai'i as an architect...

Kaiakea, a political advisor in the time of Kamehameha I, was the man building the foundation of his government

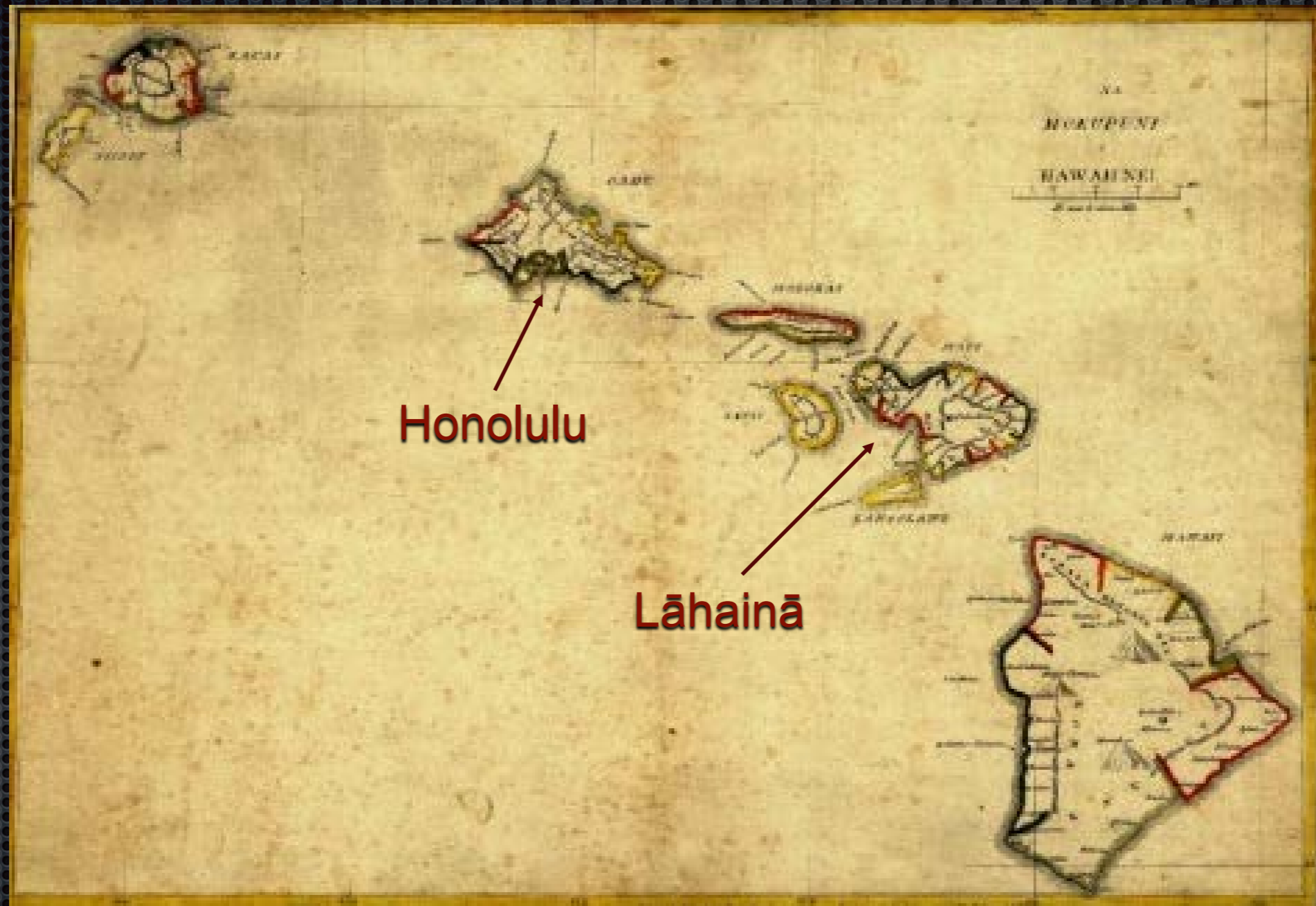
O KALAKEA KE KUHIKUHI PUU-
ONE KE KUMU O KO KAMEHA-
MEHA I LANAKILA.

O Kaiakea, he ali'i o ka mokupuni o Molokai, ua heluia oia o ke au kahiko o Hawaii nei, he kuhikuhi puuone, he kilo-hoku, he kaaole, he haku mele ko'i honua a he malama kumu kuu-hau o ka Paealua nei. A mai iala aku i loa ai keia mau haawina i kana poe keiki.

A he kanaka kalaiaina no hoi o Kaiakea i ke au o Kamehameha I i ke kanaka e kukulu ana i ke kahua o kona aupuni malalo o ka Ikaika a me ka maka o kaihe iaumeke. O ke kahua kua mua loa i hoalala ai ma kona Hawaii oia no ke kua i Mokuohai a Lanakila oia i ka make ana o Kiwala-o-oia e noho ana o Kaiakea ke ali'i ai-moku o Molokai. He kanaka kalaiaina naauao o Kaiakea o ke au kahiko, a ma kana oihana i aia ai e kona mau kupunakane mai a Kapouhiwaokalani a i ke keiki mai la Mahinulakalani a me



Hawaiian Government Capitols



Special Privy Council

Friday 30th August 1850 at 10a.m.

Present His Majesty the King

His Excellency John Young

Keao	Namakaeha
Paki	Kekuanaoa
Kanaina	Kapaakea
Kanoa	Kapeau
Wyllie	Lee

“Resolved that Honolulu is declared to be a city, and the Capital of the Hawaiian Islands.”

799

Special Privy Council
Friday 30th August 1850. at 10 A.M.

Present His Majesty the King
His Excellency John Young

Kao	Namakaeha
Paki	Kekuanaoa
Kanaina	Kapaakea
Kanoa	Kapeau
Wyllie	Lee

Mr. Wyllie Acting as Secretary.
Prayer was read as usual.

Minutes of 29th Aug. The Minutes of the 29th August were read in both languages (as has been the other minutes since Mr. Andrews left) and were approved, subject to the following which was added at the request of Governor Kekuanaoa it having been sanctioned yesterday (see minutes of yesterday.)

On Motion of Kapeau it was voted that the words "and so long as the Society shall continue in existence" be struck out from Resolution 4th of yesterday. It was voted that this be done.

Minutes of the 30th The Council then took up the special business of the day, equally to the King's Order.

The State was taken up one by one, and after a discussion on each, the following were approved of.

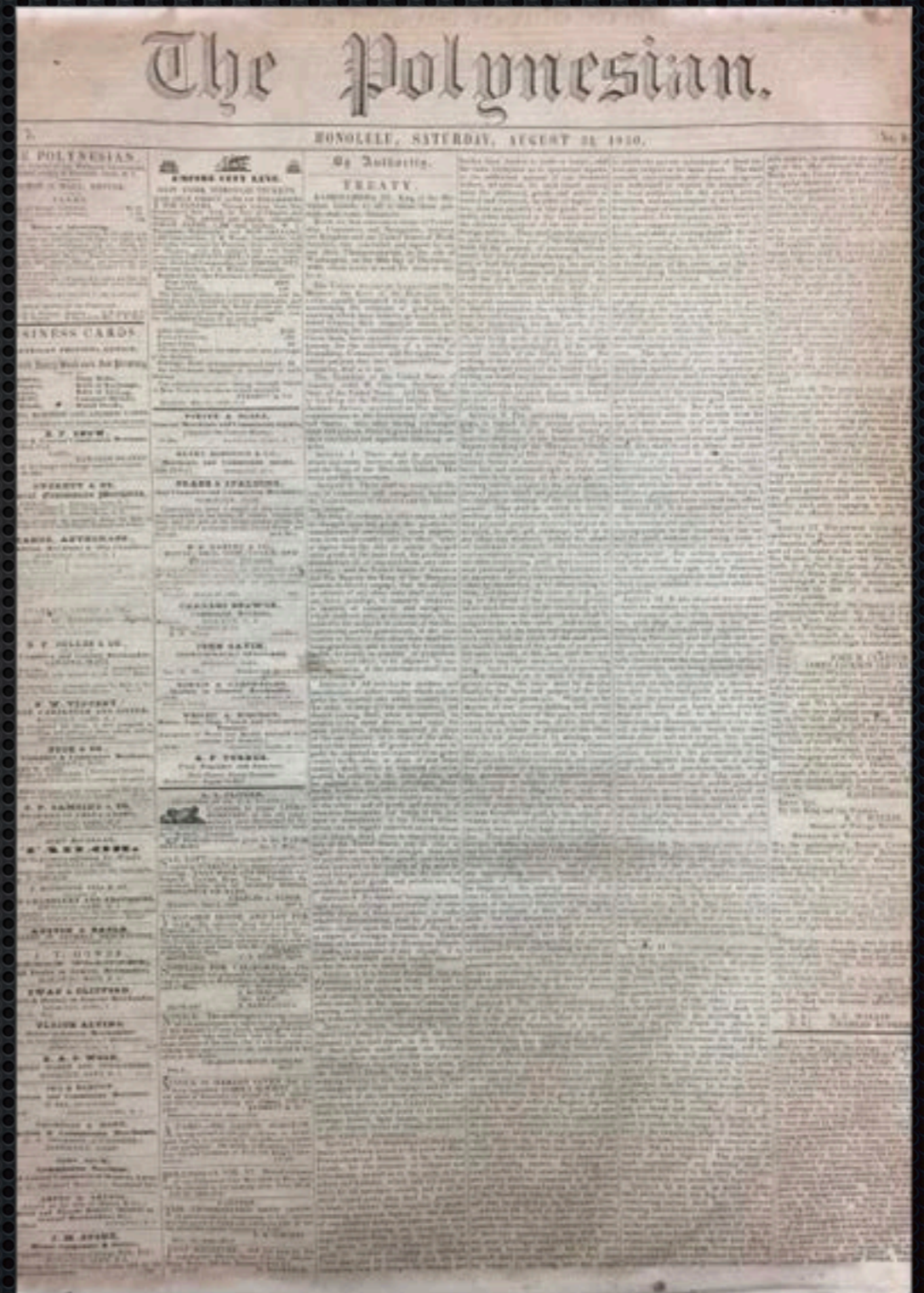
No 1	Voted	Mamooka Sheet.
" 2	"	Munau Sheet
" 3	"	Papa or Tort Sheet
" 4	"	Kia Sheet
" 5	"	Richards Sheet.



Honolulu

At a Privy Council held yesterday it pleased His Majesty the King, to declare Honolulu to be a *City* and the *Capital* of His Kingdom,..
Palace, August 30, 1850.

At a Privy Council held yesterday it pleased His Majesty the King, to declare Honolulu to be a *City* and the *Capital* of His Kingdom, and to give names to twenty-nine streets, alleys, and places, which are to be put up, as soon as possible, under the order of the Minister of the Interior.
Palace, August 30, 1850.



Polynesian, 31 August 1850
Hawai'i State Archives



*Lāhainā**

1793

“Even the shelving cliffs of rock were planted with esculent roots, banked in and watered by aqueducts from the rivulet with as much art as if their level had been taken by the most ingenious engineer. We could not but indeed admire the laudable ingenuity of these people in cultivating their soil with so much economy. The indefatigable labor in making these little fields in so rugged a situation, the care and industry with which they were transplanted, watered and kept in order, surpassed anything of the kind we had ever seen before.”

— Archibald Menzies, Botanist

Archibald Menzies, *Hawaii Nei 128 Years Ago*, 1920.

*Mrs. Pia Cockett - HAW 84.3.2

Mary Kawena Pukui, citing both Ilalaole and Mookini

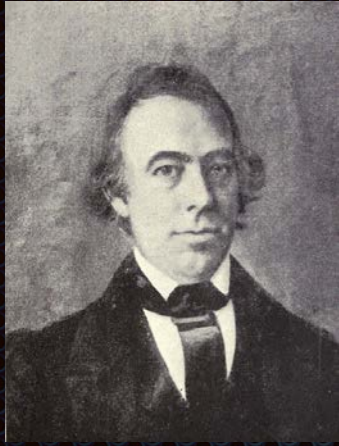


Lāhainā

1819

“The environs of Lahaina are like a garden. It would be difficult to find a soil more fertile, or a people who could turn it to greater advantage;”

—Jacques Arago, French Explorer



I ka Malu 'Ulu o Lele

1823

“The settlement is far more beautiful than any place we have yet seen on the Islands. The entire district stretching nearly three miles along the seaside, is covered with luxuriant groves, not only of the cocoanut...but also of the breadfruit and of the kou...while the banana plant, kapa and sugar-cane are abundant, and extended almost to the beach.”

—Rev. William Richards

“Moku‘ula in Lāhainā is an axis mundi
of the Hawaiian world.”

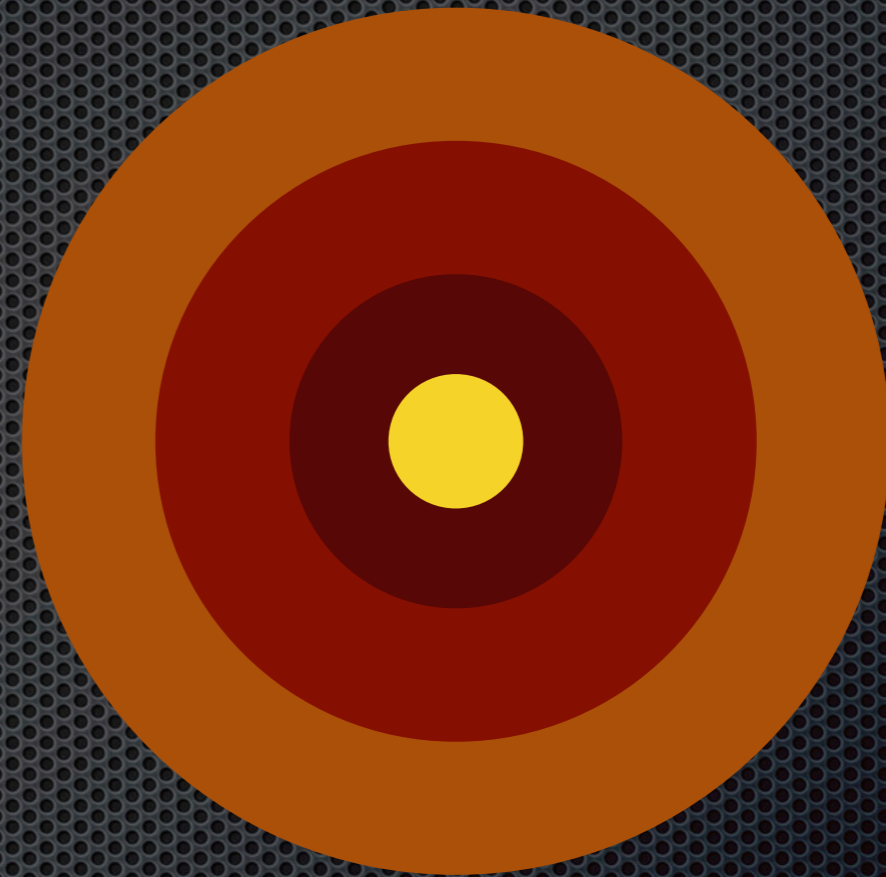
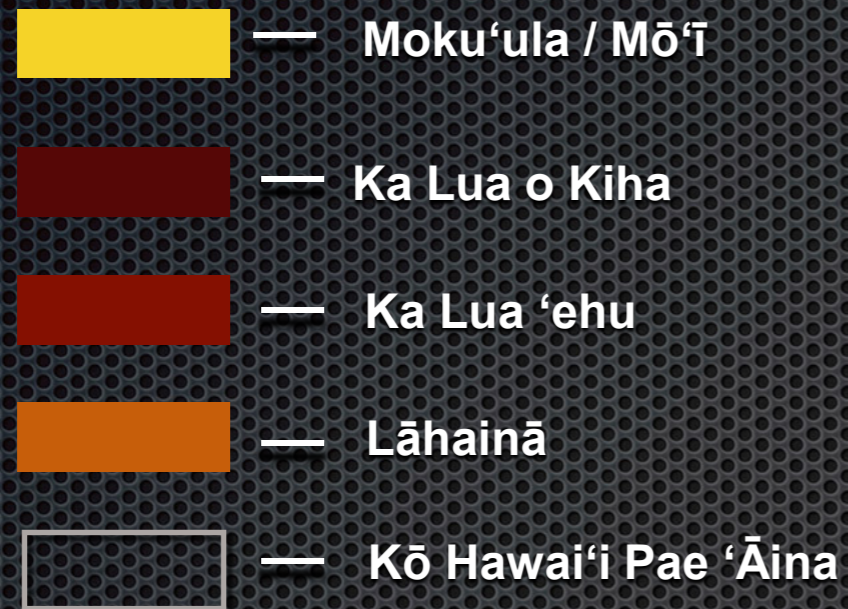


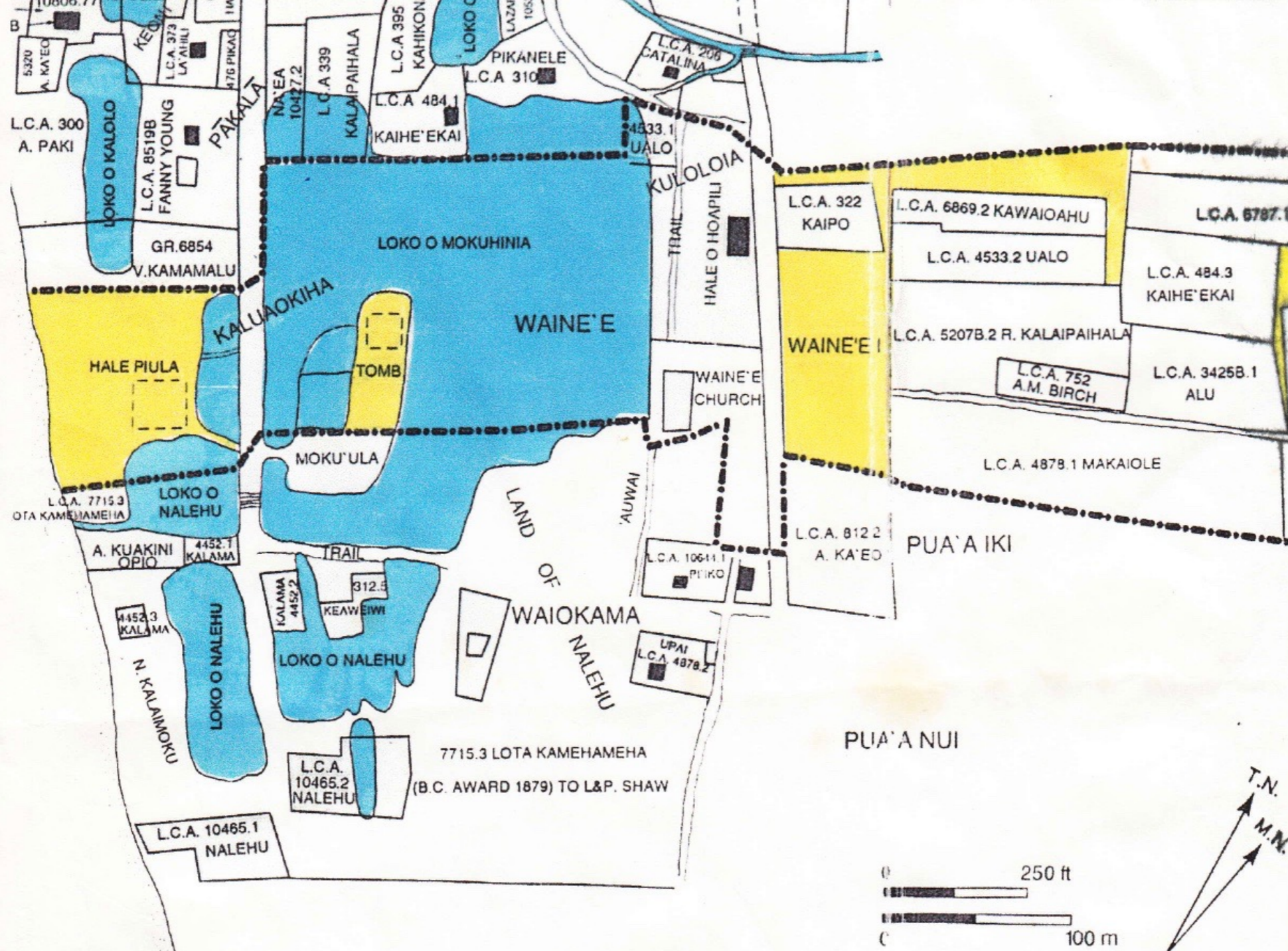
WAHI KALAI'ĀINA (POLITICAL CENTER): Lua'ehu / Nation's first Capitol

WAHI MANA (SPIRITUAL CENTER): Ka Lua o Kiha / Royal Cemetery

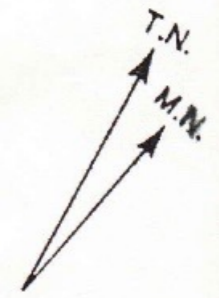
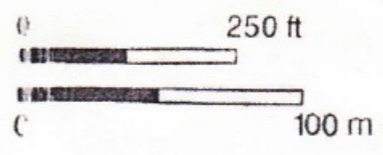
WAHI 'OIHANA KALEPA (ECONOMIC CENTER): Pākalā / Trade Hub

The concentric political geometry of the Royal Court





- KEY**
- WAINE'E BOUNDARY
 - CROWN LAND
 - POND
 - BRIDGE
 - L.C.A. LAND COMMISSION AWARD
 - HOUSE IN 1884



MAP DRAWN BY L. CRALL AND B. EVANS

Figure 16. Lower Waine'e Ahupua'a in 1848, showing the large Loko o Mokuhinia. Reconstructed from documents of the Great Māhele, S. E. Bishop survey of 1884.

Prison

Church

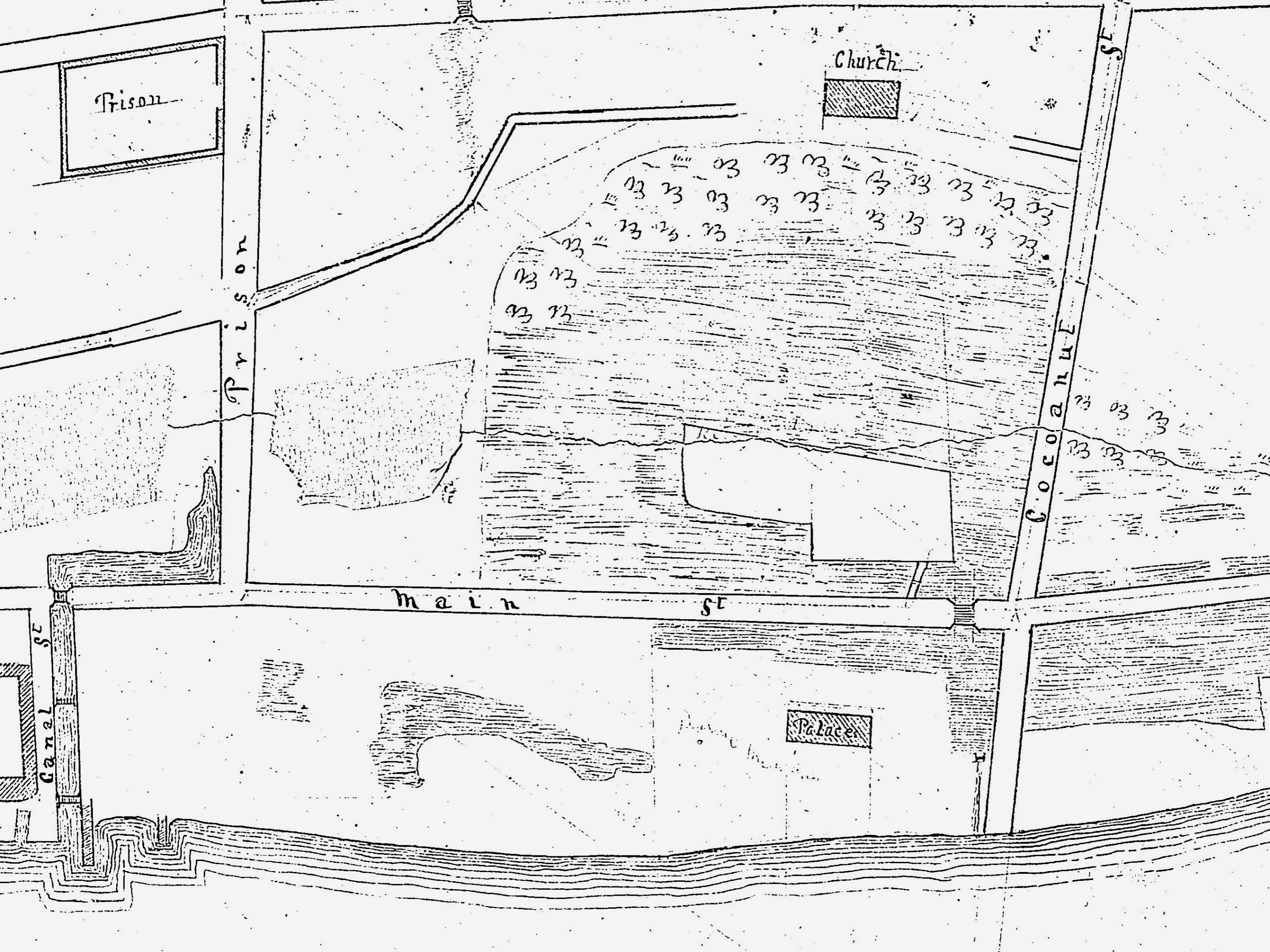
Prison

main st

Coccolli

Palace

Canal



KALAI'ĀINA

Lāhainā as a Political Center

Lāhainā - Ka Hale o Pi'ilani

16th century Ali'inui of Maui

Ka Papa Limu o Pi'ilani

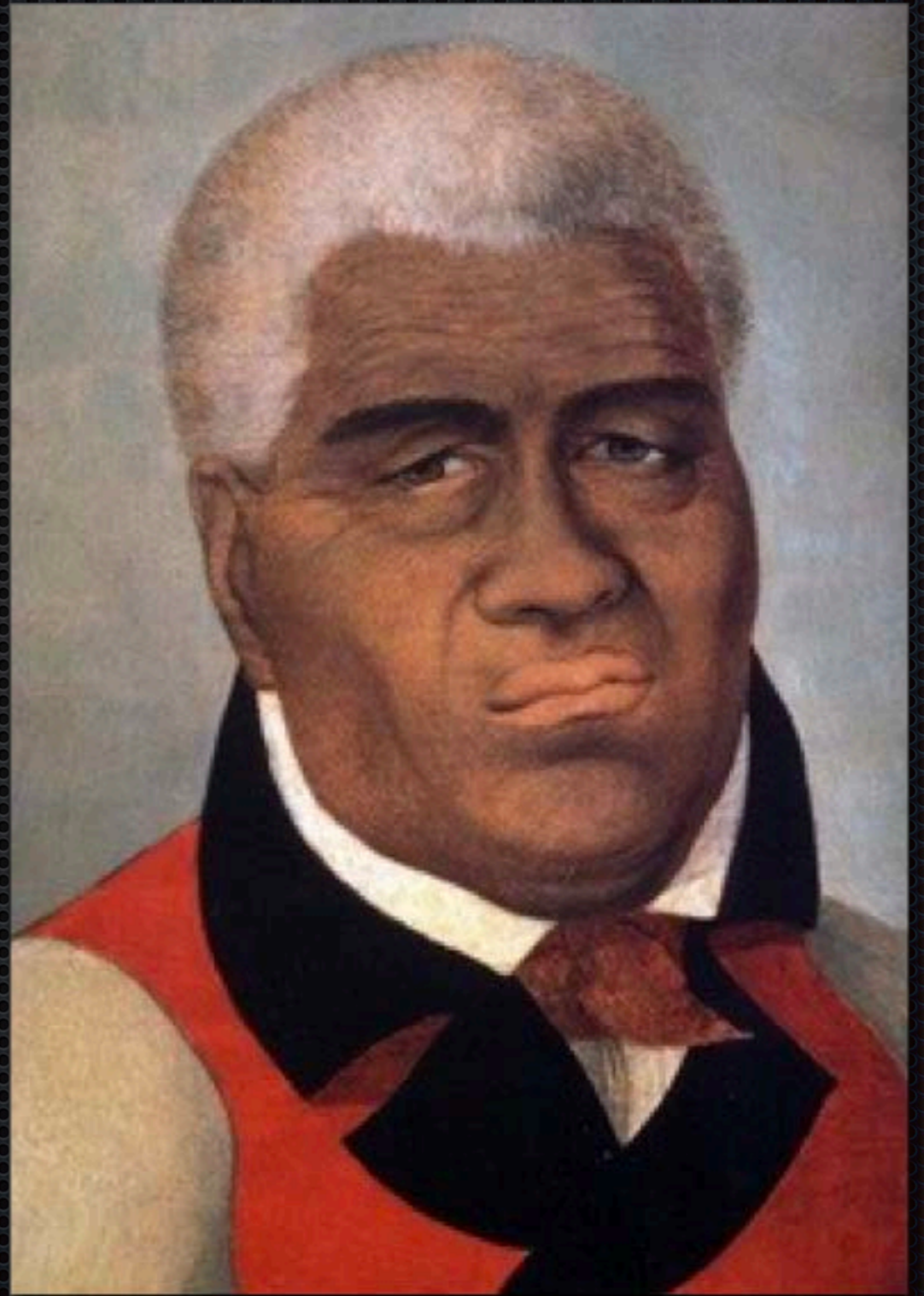
Hono a Pi'ilani

Heiau Pi'ilani

1802-1803

Resides in Lāhainā with a
retinue of 1,000 and
establishes Aha Council

Builds brick Palace
likely the first “Western-
style” building in Islands



1832
Keōpūolani
Returns Home

Establishes the first
Christian church on Maui.

Ebenezera - Ka 'Ekalesia o Wainē'e -
Waiola Church



Brooke Parker

*Ke Kanawai
No ka hoole i ka Pope*

KAMEHAMEHA III.

Lahaina, Maui,
Dekemaba 18, 1837.

mea e ae paha e haunaele ai keia aupuni, e pili no keia kanawai ia ia, a e paaia oia, a e hookuke ia aku no mahope iho o kona uku ana i na'lii, ma ke dala, aia no i ka manao o na'lii.

E paaia a e hoolahaia i ike pono ia keia kanawai mai o a o, a i ka wa e holo mai ai ka moku, na ke Pailota e lawe pu i keia kanawai a e haawi i ke alii moku i naaupo ole ia i keia kanawai. A i ole e hoikeia keia kanawai i ke'lii moku e ke Pailota, a lele e mai i uka nei ka mea i papaia; na ke Pailota i hoike ole i ke alii moku i ua kanawai nei, e uku mai ke Pailota i na'lii i hookahi haneri dala. A e hoihoi ia no ua ae moku la maluna a ka moku.

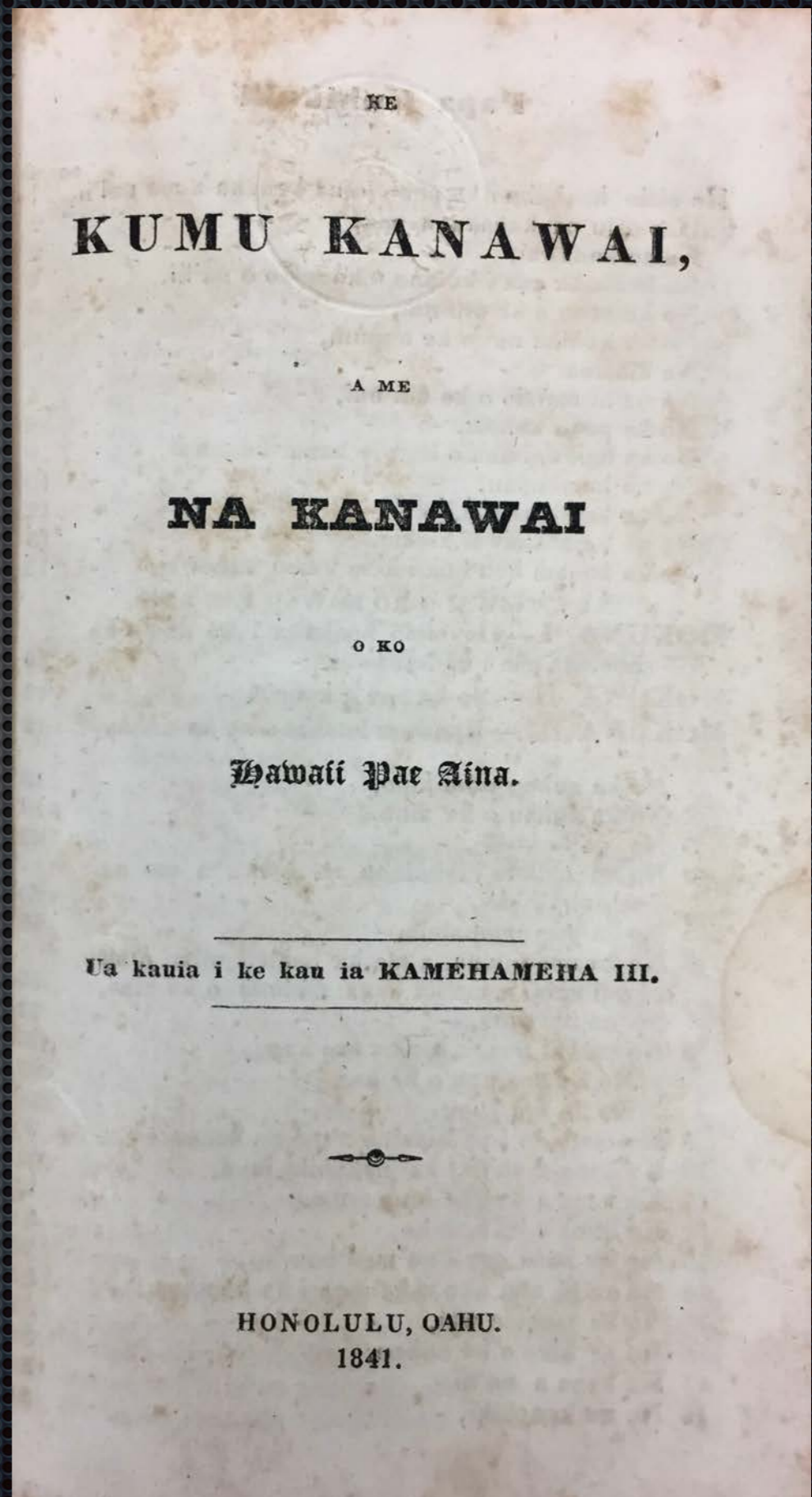
Ina paha e loa kekahi haole, a he kanaka paha, e kokua ana i ka mea ao i ka oihana a ka Pope, e uku mai oia i na'lii, i hookahi haneri dala no kana hana pakahi ana pela.

KAMEHAMEHA III.

LAHAINA, MAUI, }
Dekemaba 18, 1837. }

**KUMUKĀNĀWAI
LUA'EHU
1840**

Hawai'i's founding constitution.
Drafted, debated, and signed at
Lua'ehu, i ka Malu Ulu o Lele,
Lāhainā, Maui



MANA

Lāhainā as a Spiritual Center

“Ka Lua o Kiha”

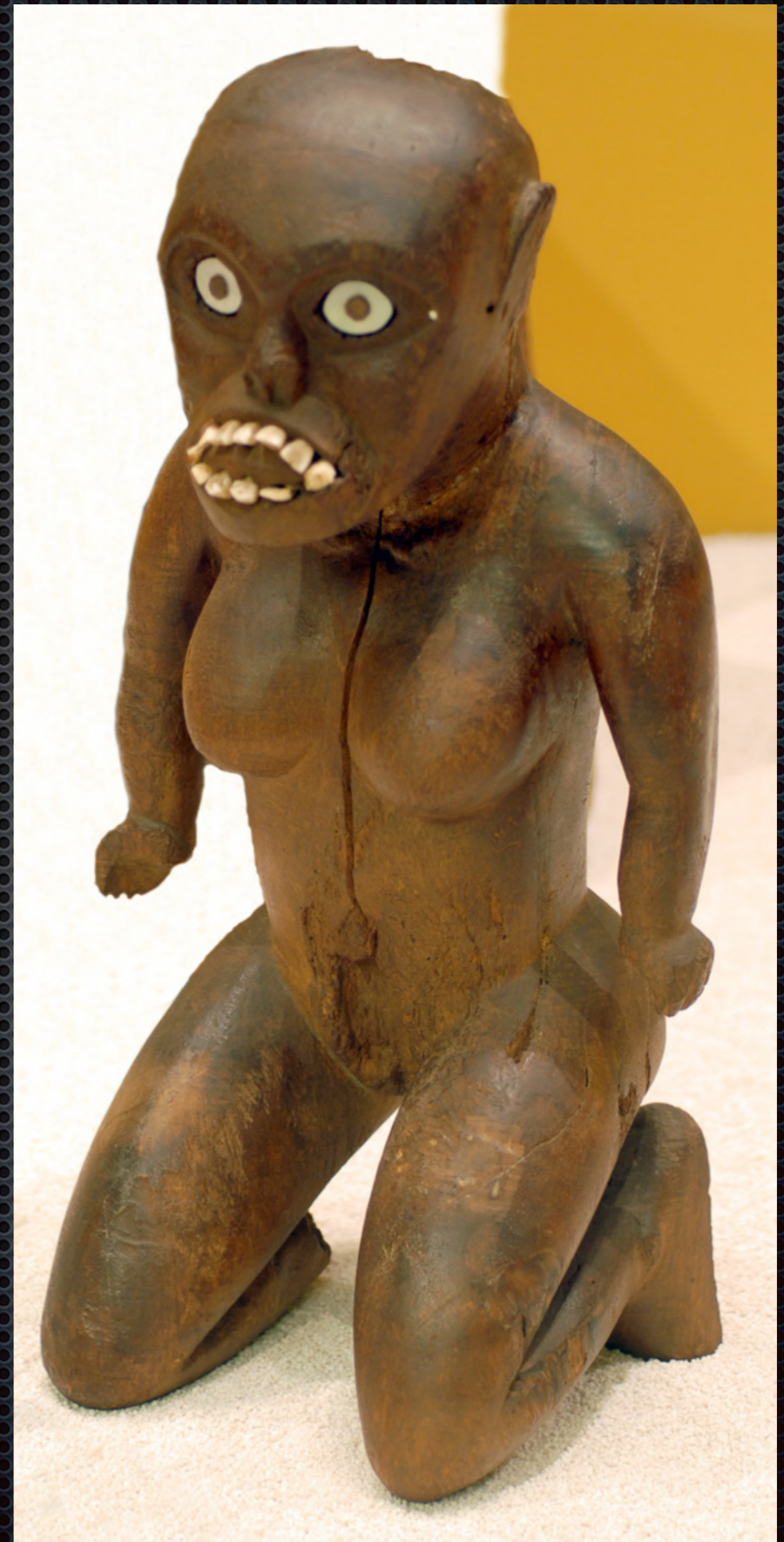
Lā‘ielohelohe - Pi‘ilani

Lono-a-Pi‘ilani

Kiha-a-Pi‘ilani

Kalāaiheana

[Kihawahine Mokuhinia Kalama‘ula Kalā‘aiheana]



Ka Pā'ū O Nāhi'ena'ena 1825

Constructed in Lāhainā 1823-1825

1 million 'ō'ō feathers

Pipili Kalani, mau ka honua ia la

[When the chiefs are joined, the earth
remains eternal]



Pā'ū of Nāhi'ena'ena
Bernice Pauahi Bishop Museum

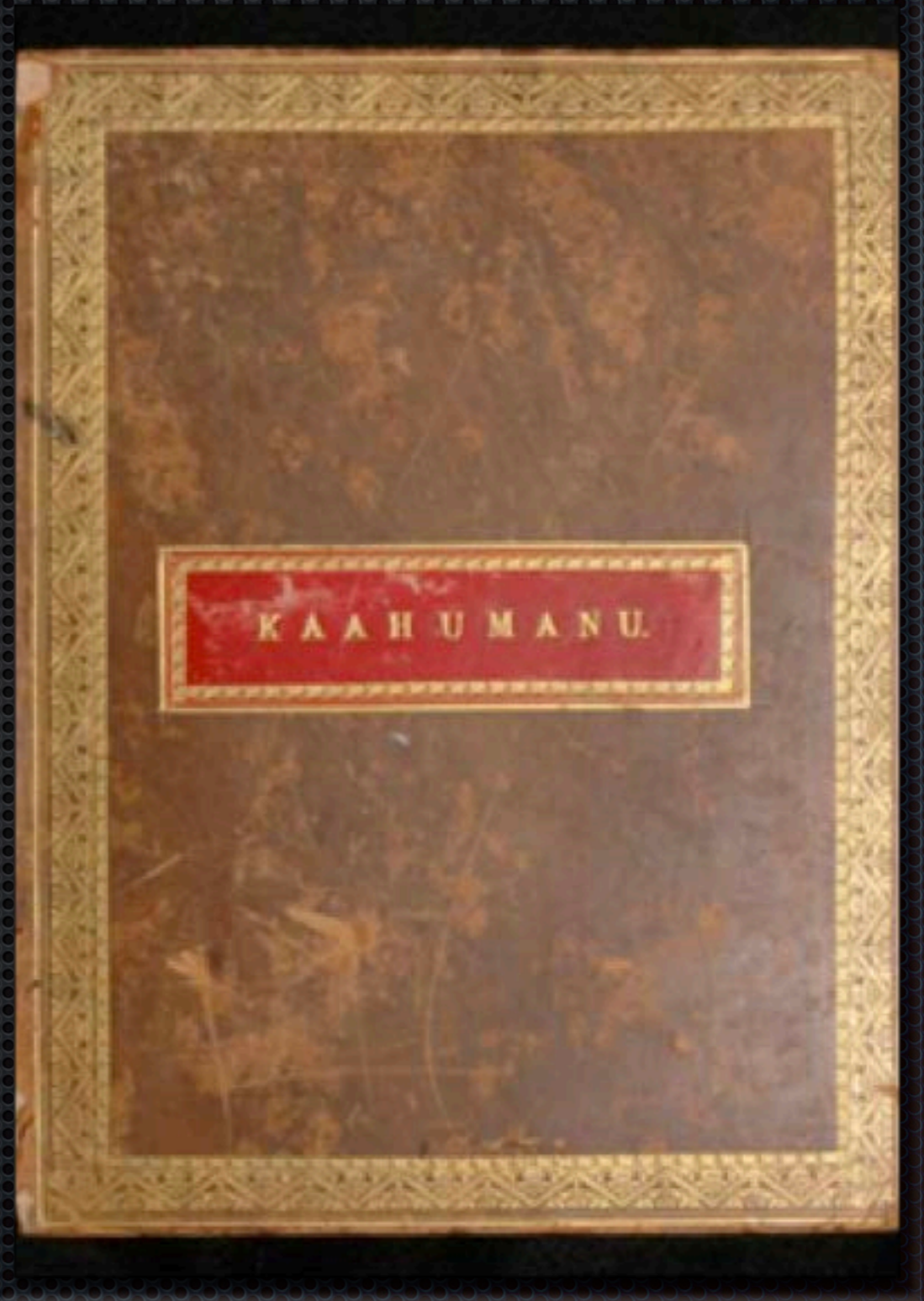
Pōhaku O Hauola



The birthing spot of aliʻinui

*Bible of
Ka'ahumanu*

1817



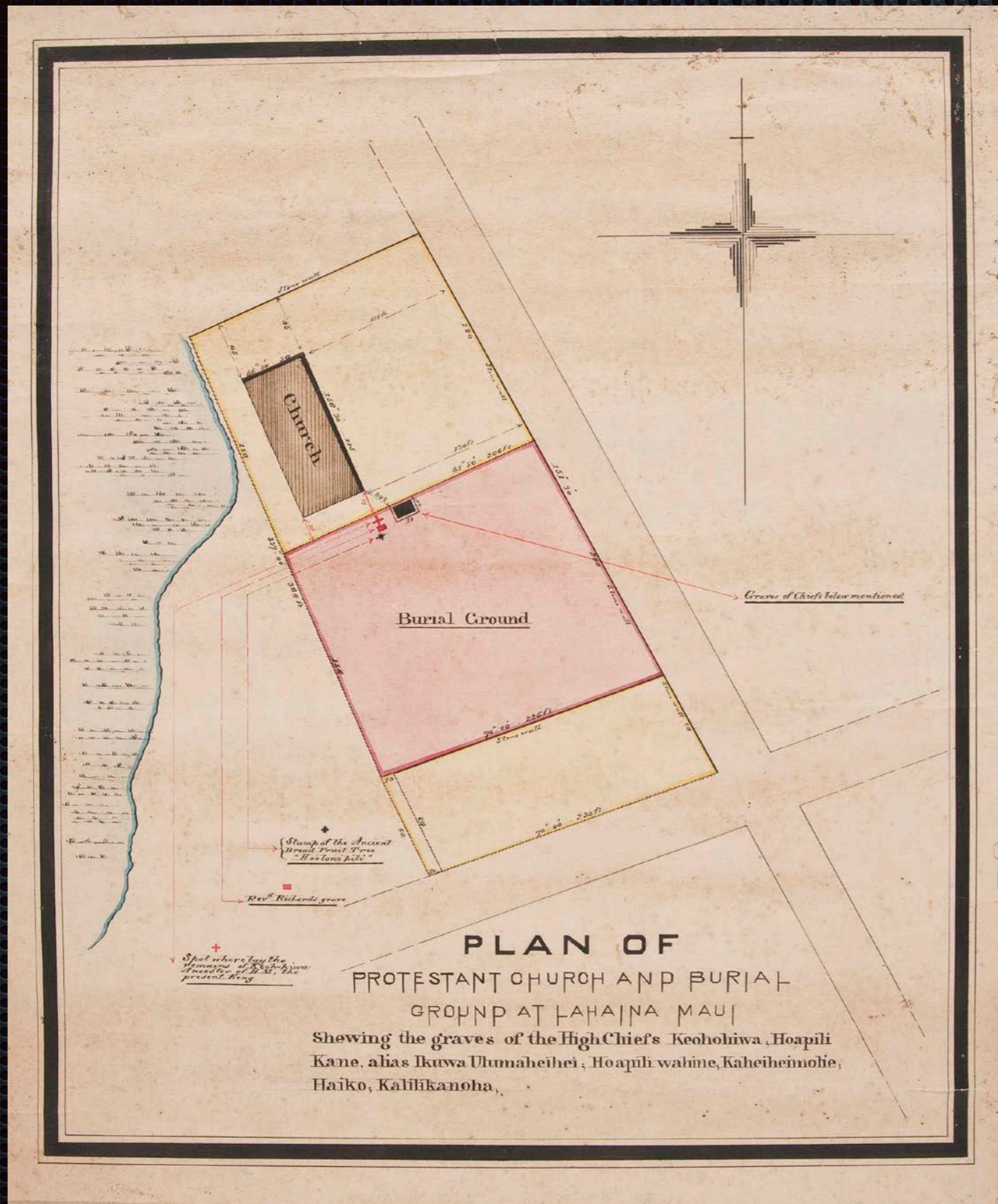
BS 185 L84 1817 l.c. vol. 1
Bernice Pauahi Bishop Museum



Ka Lua o Kiha / Ka 'Ekalesia o Waine'e

Royal Burial Grounds at Lāhainā

c. 1870s-1880s



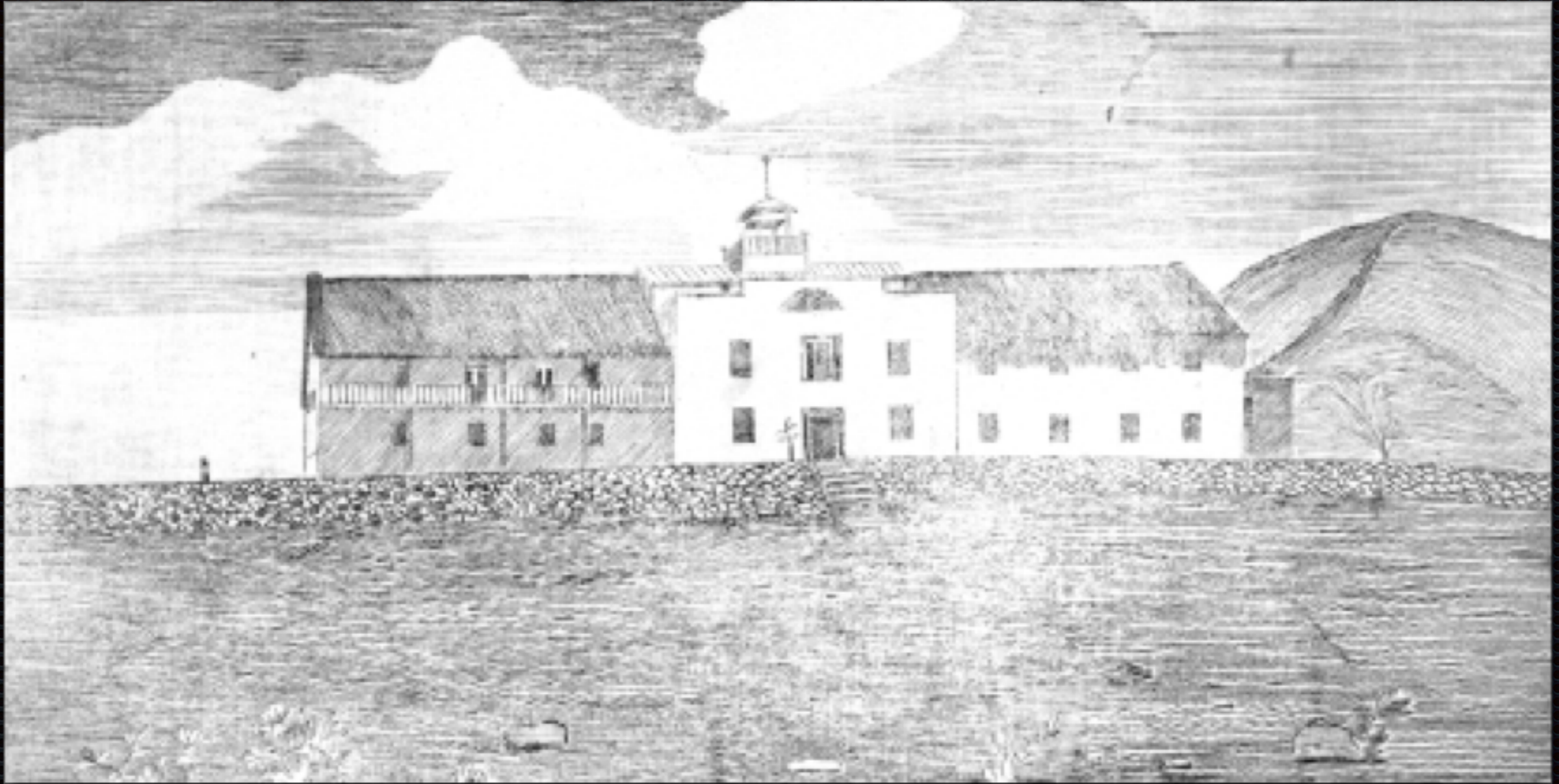


Mō'īwahine Keōpūolani
Harieta Keōpūolani Nāhi'ena'ena
Ulumāheihei Hoapili
Kalākua Kaheiheimālie

Kaumuali'i
Miriam Kekau'ōnohi
Liliha

HO'ONA'AUAO

Lāhainā as a Center of Education



Engraving - Momona

Lahainaluna Mission Seminary

Classes begun 1831

Lahainaluna

- Training the future native leaders of Hawai'i
- Kaukau ali'i and successful teachers
- School Superintendents, principals, and teachers
- Legislators, cabinet officials, governors
- Judges, lawyers, interpreters

Mua Lahaina Ap. 9 1842
No ke kuhikuhi hewa ana o ke Hawai'i nui i ka na
Misionari hana.

Pae mai na Misionari ma Hawaii
nui i ka mahakiki o ka Haku 1820, a hu ma Kauihewa
i Hawaii, he unu lakou, i lima kane i lima wahine,
he mau holohakiki kekahi o lakou, a na Misionari
maua o ka pae ana mau ma Hawaii nui, o Binamu
ma, a i ke lakou hele ana mai i aha ma ka lakou ma
na wahine no, a iha aha la he Haku i na wahine haale
mahemake aha la na hunahe a me na wahine a
me na kamahi i na wahine haale, no ka mea, he ma
hine he lakou ihe ana i na wahine haale, a hele a la
lakou i ihe i ka Mokuahine o Liholike ia Theopulos,
ma Lucca mahou i uho a, Hinou mai kekahi holohaki
ia mahou, aha hahe kapa aha hahe noa, ia 'hu
la mahou, aha wahi kapa, ua noa, Hinou hou mai la
ke ka, aha ha mahakiki Liholike, ia 'hu la mahou
u, ai a me i ha haale, alaila hame a la lakou i lolo
o ka haale i ihe ia ia a hana aha la mahou i hana
ia i la haale i haale, huanaha hoi ke lakou papale,
kai no ke like me ka papale oia hana, he aha la ka
ke ka wahine, he poepoe na maha i lolo hooe ka ai,
maha ha hana o na Misionari he aha. Paha noho ke
haki holohakiki o lakou i kapa ia aha ai o Maui,
no ka mahou o haale ana Hinou aha la i Theopulos
me ia ia, he poe haale aha hana, i mai la ia, he
he poe hana no ke hana nui o ka hana, aia
ke Maui i ka hana, Oho hou mai no Maui, i ma
ha, a ma muti hiki mai ka la nui, ka la hooe
la, a lolo na hana, i a la haale i haale i
nui paha hana ka la, o ka nui maui o ka la
ka na hana i hana ai, he kuhikuhi hana hana.

Lahainaluna Student Composition

9 April 1842.

Hale Pa'i - Literacy



January 1834 - Ramage Press shipped from Honolulu

February 1834 - Printing of first newspaper in Hawai'i

1834 - February 14

Ka Lama Hawai'i
(The Hawaiian Torch)

the first newspaper in the Hawaiian Islands printed in Hale Pa'i at Lahainaluna

Over 100 million pages printed between 1834-1864

Near universal literacy by the 1860s



Ka Lama Hawai'i
28 Maraki 1834

David Malo's Map of the World



Hand-drawn in 1832 as a student at Lahainaluna

'Ahahui Imi I Nā Mea Kahiko o Hawai'i Nei

Peresidena - Kamehameha II Peresidena Hope - William Richards

Timoteo Ha'alilio
Davida Malo
Keoni Ana
Samuel Kamakau
A. Moku



Ka Nūpepa Kū'oko'a
9 Sepatemaba 1865

‘ŌI HANA KALEPA

Lāhainā as a Center of Commerce

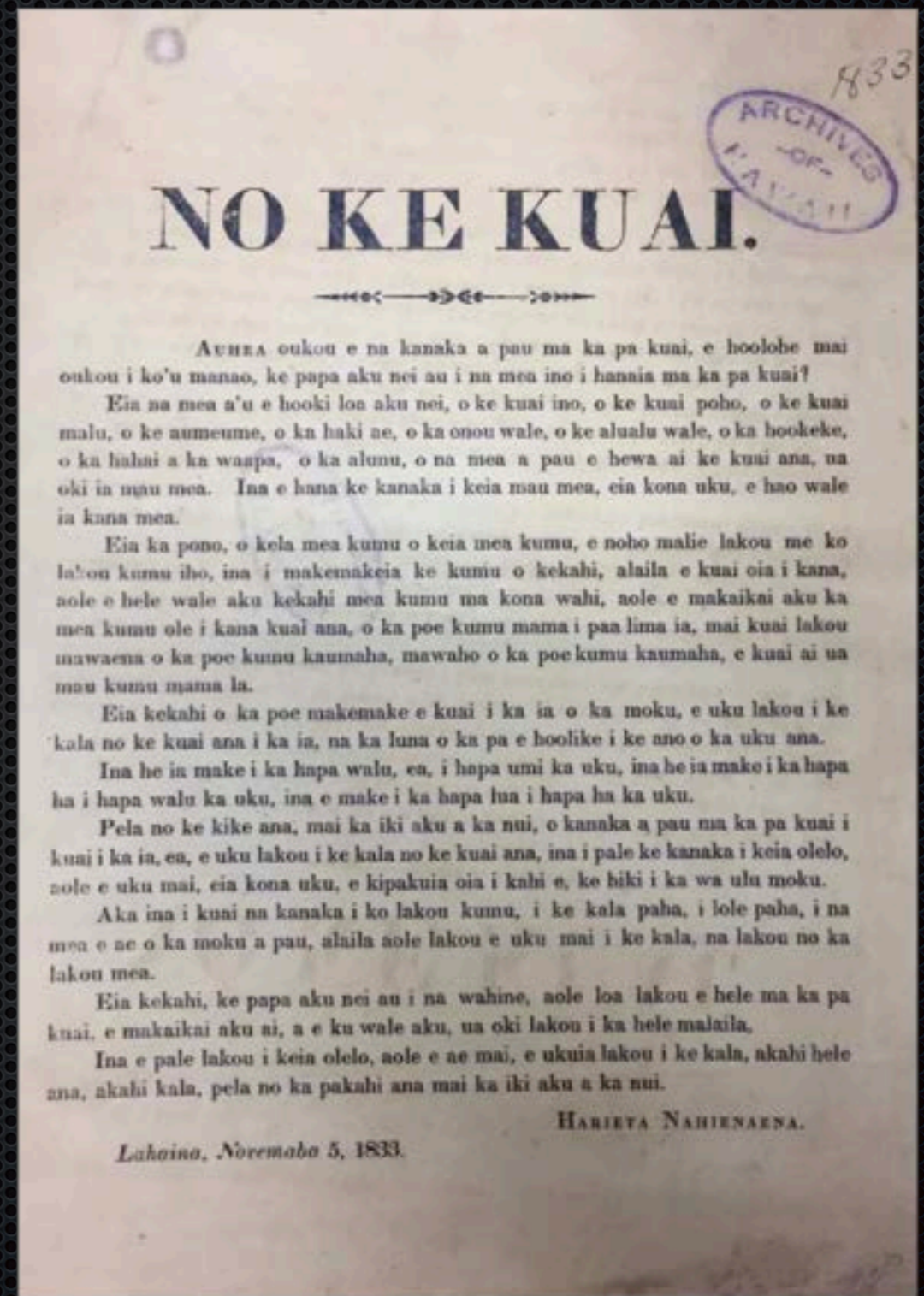
NO KE KUAI

[CONCERNING COMMERCE]

“overcharging, underselling...wrangling, breaking of bargains, enticing, pursuing, chasing a boat, greediness... I hereby forbid women from going to the market enclosure, for the purpose of sightseeing or to stand idly by...” “These are the things which I strictly forbid,”

Harieta Nahienaena

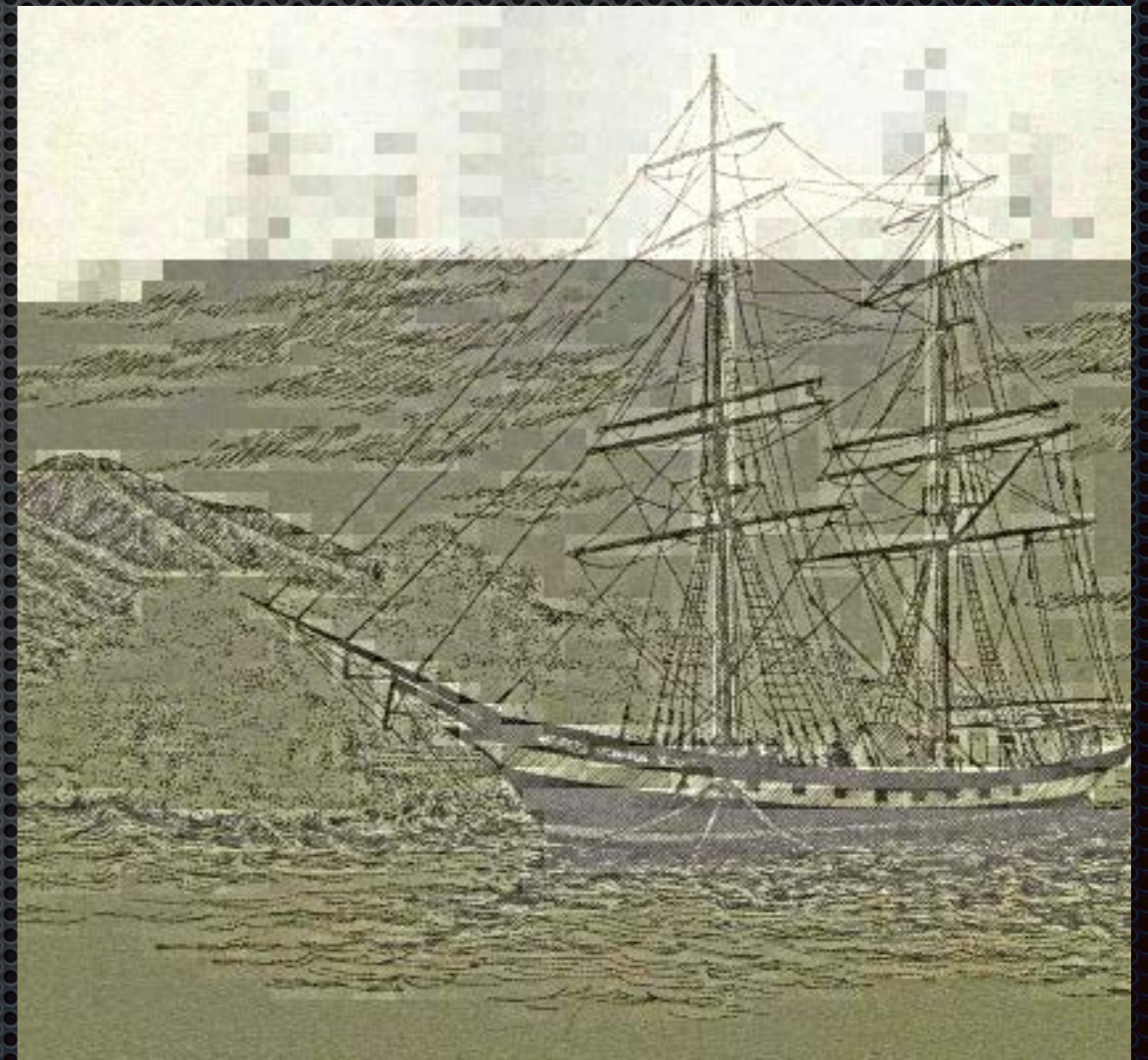
Lahaina, Novembapa 5, 1833



Lāhainā - Ka ulu lā'au ma kai

(The forest on the seaward side)

- 1840 Four hundred ships call at Lāhainā
- Thousands of sailors, traders, and others come ashore
- In 1848 there were 150 different currencies being exchanged



I ka Wā Mamua, ka Wā Mahope