



HAWAI'I STATE CAPITOL

HAWAI'I STATE CAPITOL

BELT, LEMMON AND LO



CYRIL W. LEMMON

DOUGLAS W. FREETH

FRANCIS S. HAINES

PAUL D. JONES

ROBERT M. BELT

WALTER K. COLLINS

DONALD T. LO

WYNN M. NAKAMURA

F. R. MONTGOMERY

FREDERICK H. KOHLOSS



HAWAI'I STATE CAPITOL

John Carl Warnecke –
Architect and Planner



Mary Alice Hutchins –
Spec writer



Richard Tongg – Landscape
Architect



Phyllis Spalding –
Interior Designer

HAWAI'I STATE CAPITOL

PHILOSOPHY OF APPROACH

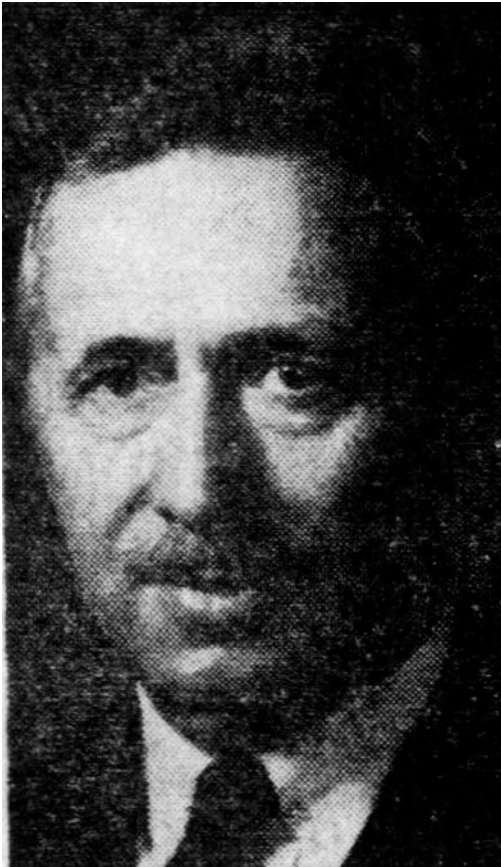
To the sensitive and imaginative designer, the commission will be an invitation to give series study to local conditions of climate and site, to understand and sympathize with local customer and people, and to grasp the historical meaning of the particular environment in which the new building must be site.

He will do so with a free mind without being dictated by obsolete or sterile formulae or clichés - old or new; he will avoid being either bizarre or fashionable, yet he will not fear using new techniques or new material should these constitute real advance in architecture thinking.

The selected Architect will think of style not in its narrower meaning, but as a quality to be imparted to the building, a quality reflecting deep understanding of conditions and people. His directness and freshness of approach will thus have a distinguishable flavor representative of the people of Hawaii.”

HAWAI'I STATE CAPITOL

STATE CAPITOL ADVISORY COMMITTEE



Pietro Belluschi



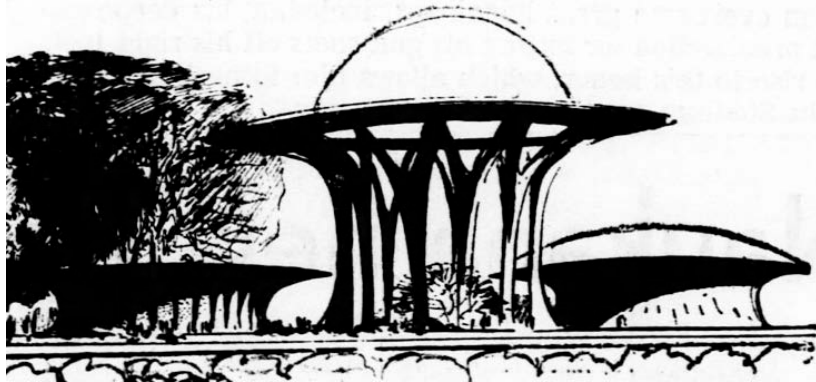
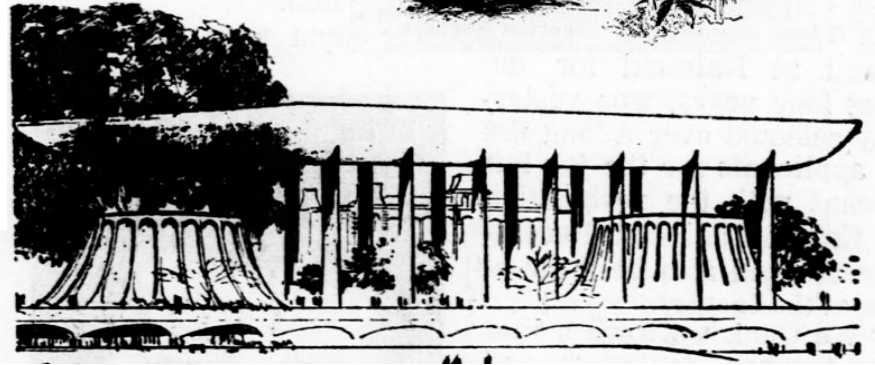
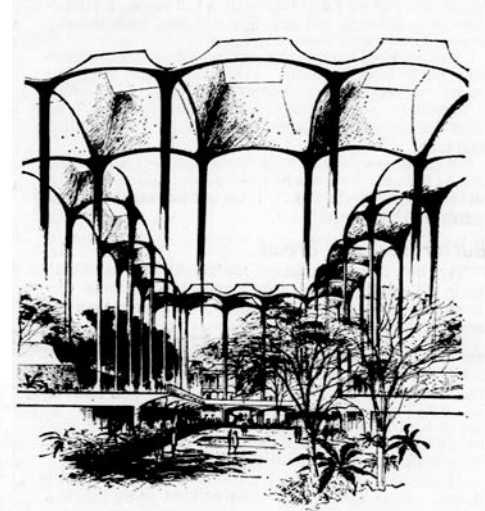
George Wimberly



Leonard Hunter

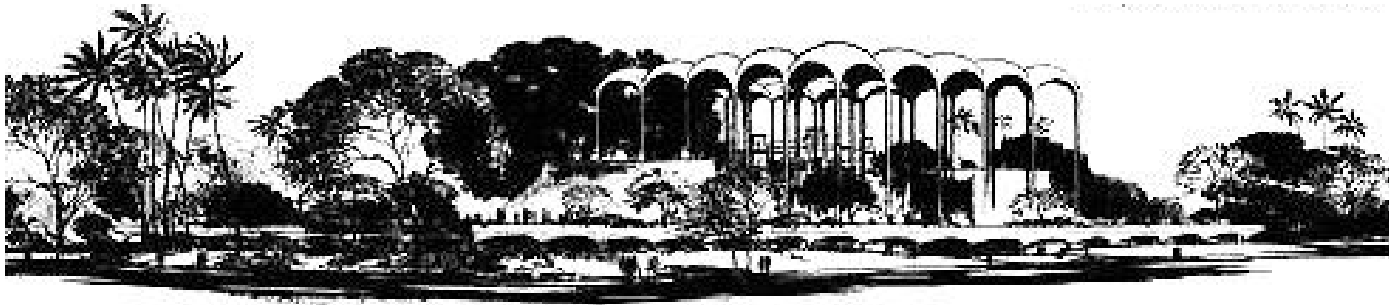
HAWAI'I STATE CAPITOL

EARLY DESIGNS



HAWAI'I STATE CAPITOL

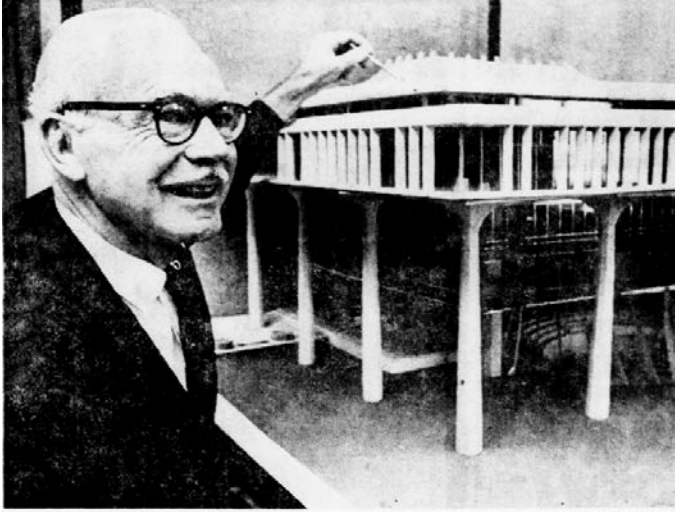
HEIAU SCHEME



LANAI SCHEME

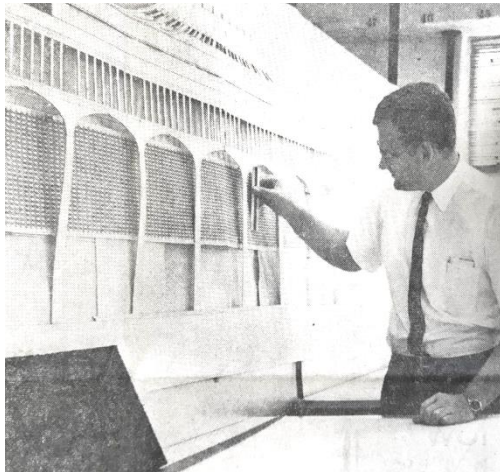


HAWAI'I STATE CAPITOL

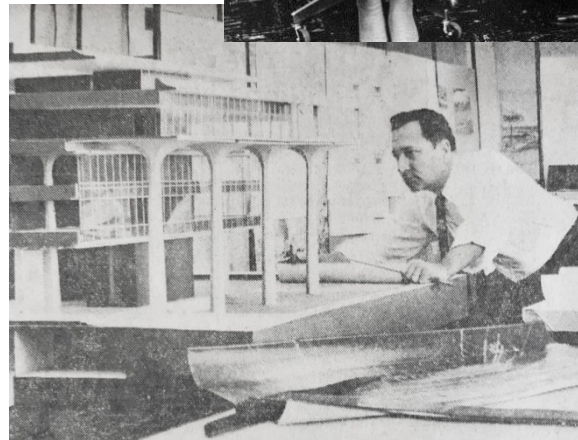


CYRIL LEMMON

DESIGN PROGRESS



DON FAIRWEATHER



TY SUTTON

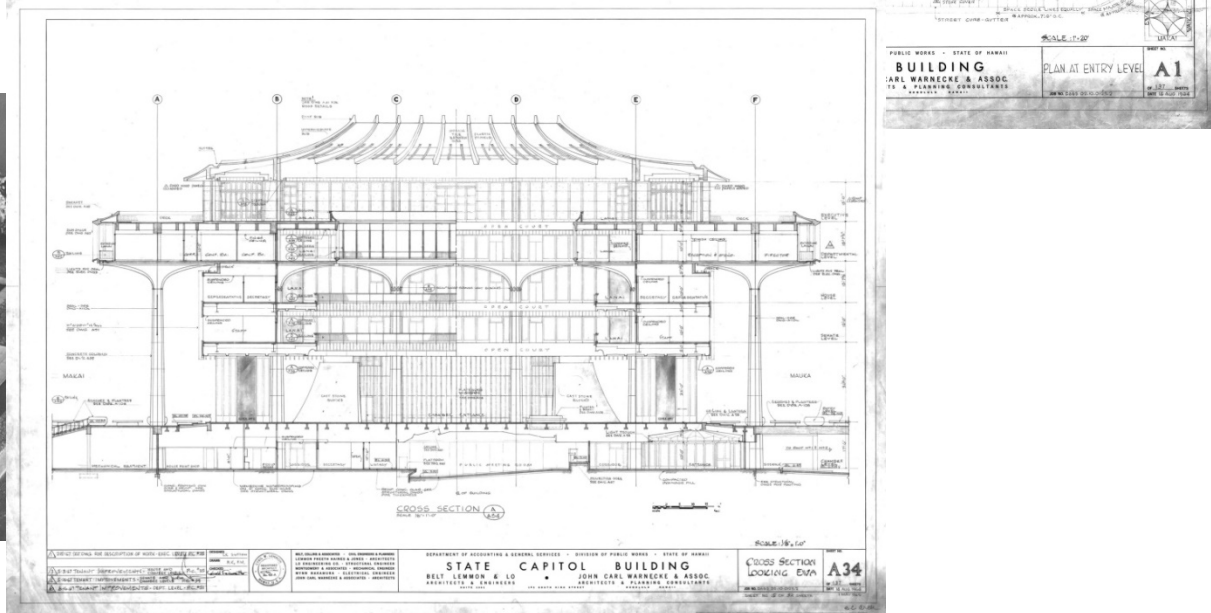
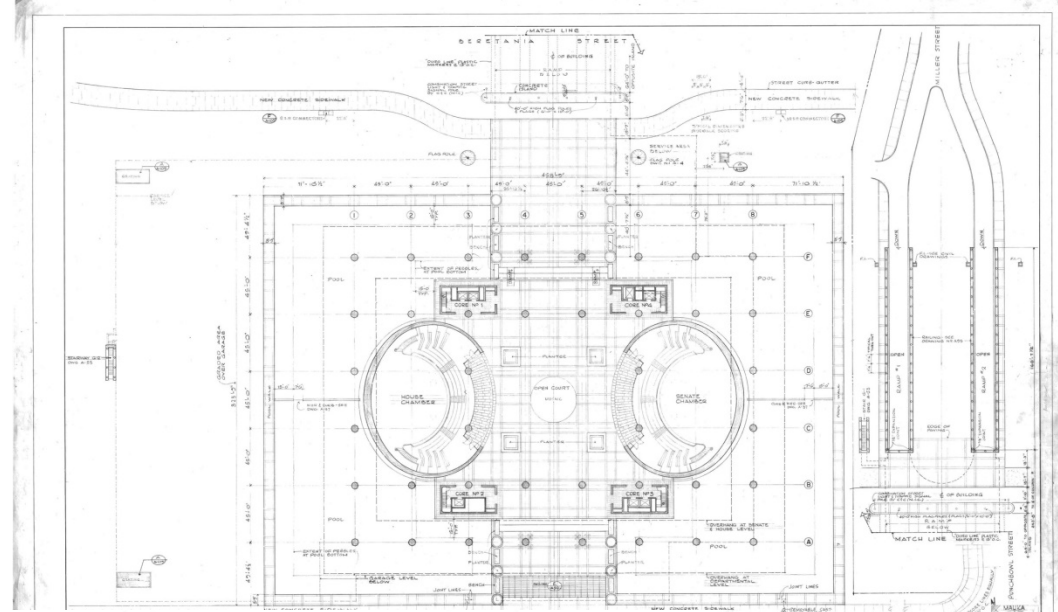
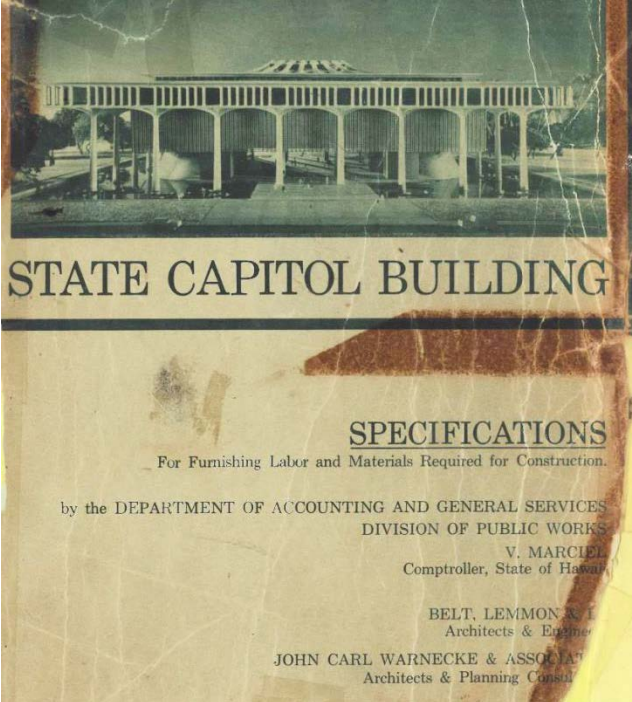
HAWAI'I STATE CAPITOL



FIRST NATIONAL BANK/
FIRST HAWAIIAN BANK
BUILDING



HAWAI'I STATE CAPITOL



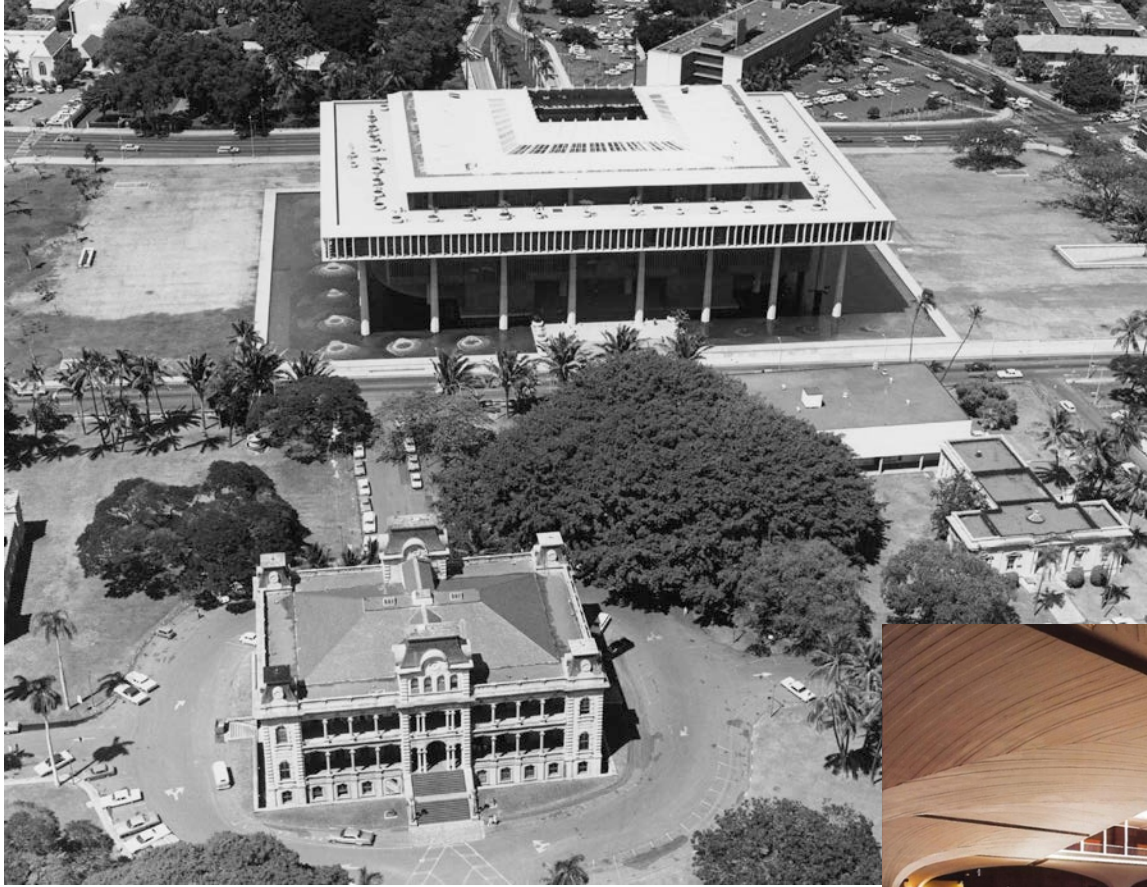
HAWAI'I STATE CAPITOL



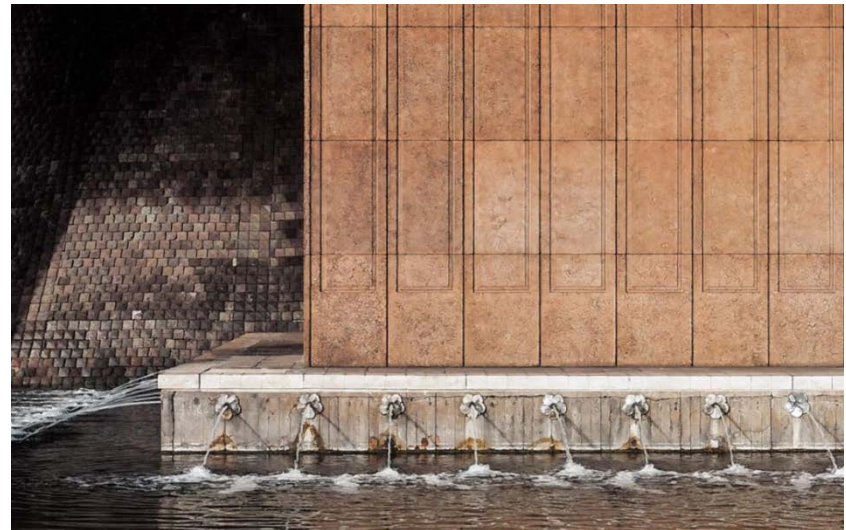
HAWAI'I STATE CAPITOL



HAWAI'I STATE CAPITOL

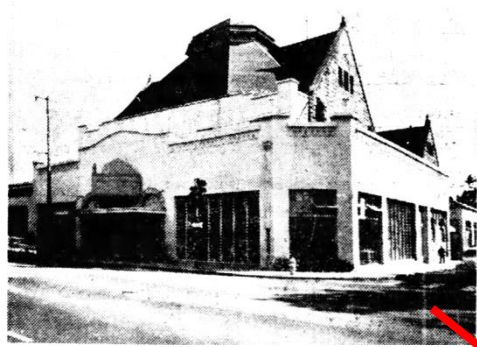


HAWAI'I STATE CAPITOL

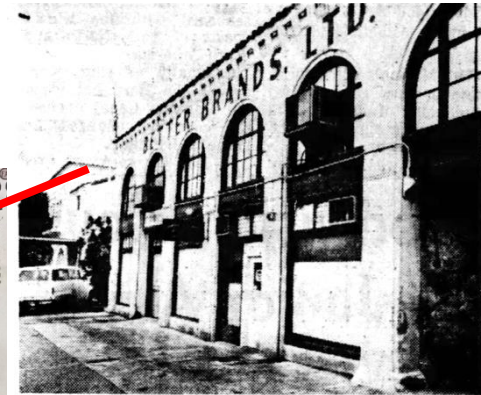


HAWAI'I STATE CAPITOL

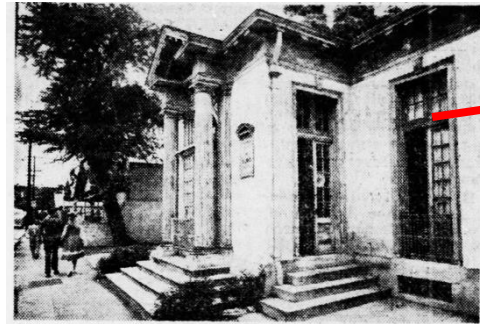
BUILDINGS REMOVED FROM THE SITE



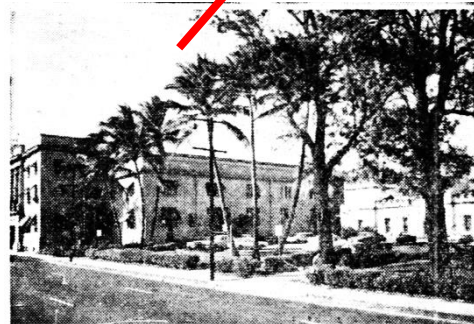
Schuman Carriage Building



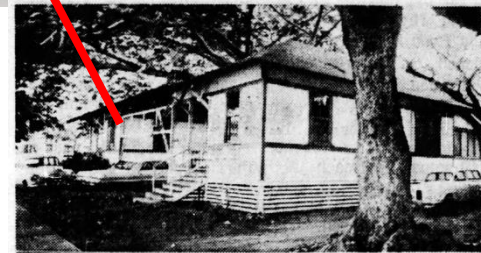
Better Brands Building



Doctor's office



The Armory Building



Residential cottages

HAWAI'I STATE CAPITOL

RECONSTRUCTION OF 'IOLANI BARRACKS



HAWAI'I STATE CAPITOL

GROUND BREAKING 1964



HAWAI'I STATE CAPITOL

PHYLLIS SPALDING &
COUNTRESS ELSIE
GOZZI ON SITE



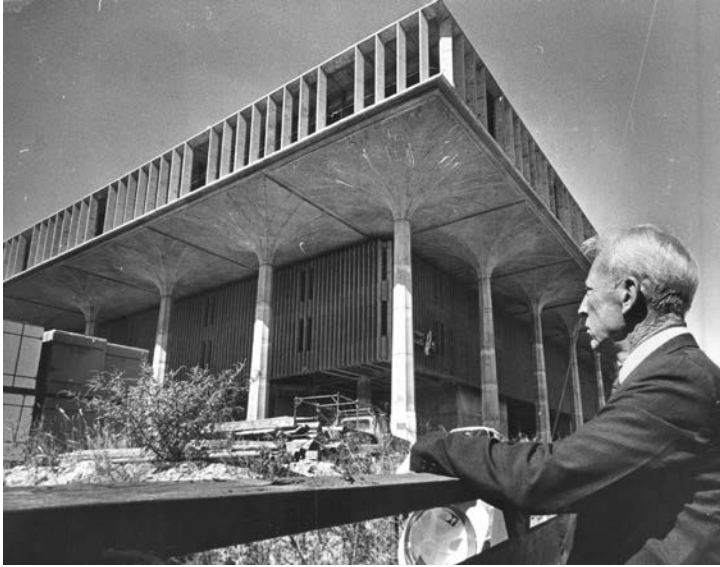
HAWAI'I STATE CAPITOL



SITE CONSTRUCTION



HAWAI'I STATE CAPITOL



HAWAI'I STATE CAPITOL



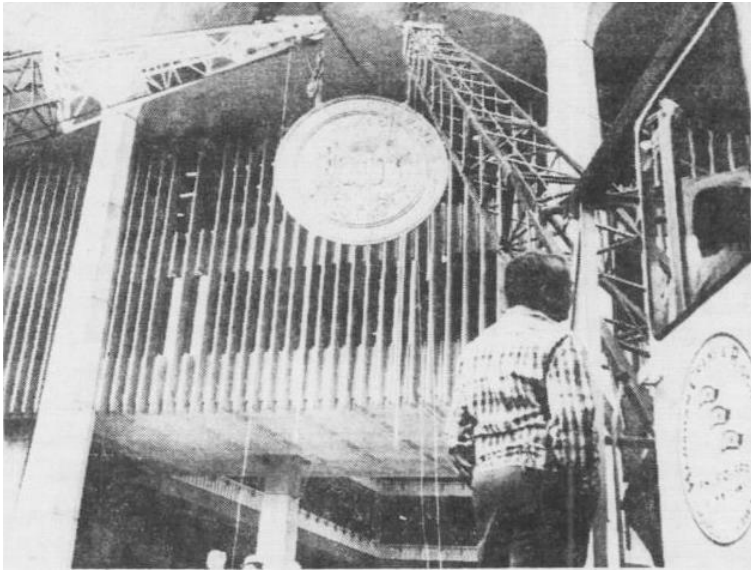
HAWAI'I STATE CAPITOL

MOVING FROM 'IOLANI BARRACKS
& BLESSING OF NEW BUILDING



HAWAI'I STATE CAPITOL

INSTALLING THE 15-FOOT
DIAMETER 7,500 LB.
STATE SEALS



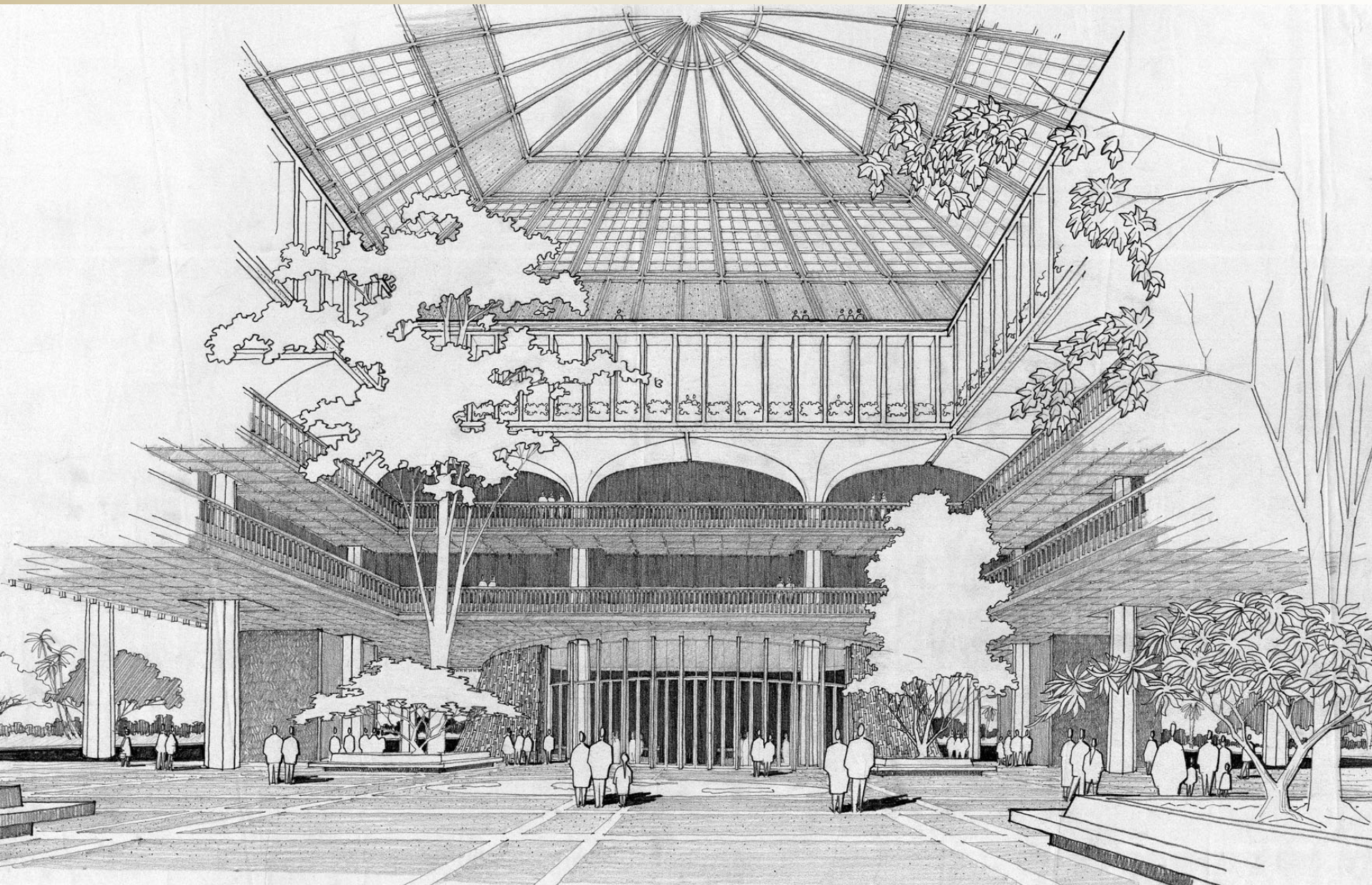
HAWAI'I STATE CAPITOL



DEDICATION
CERMONY

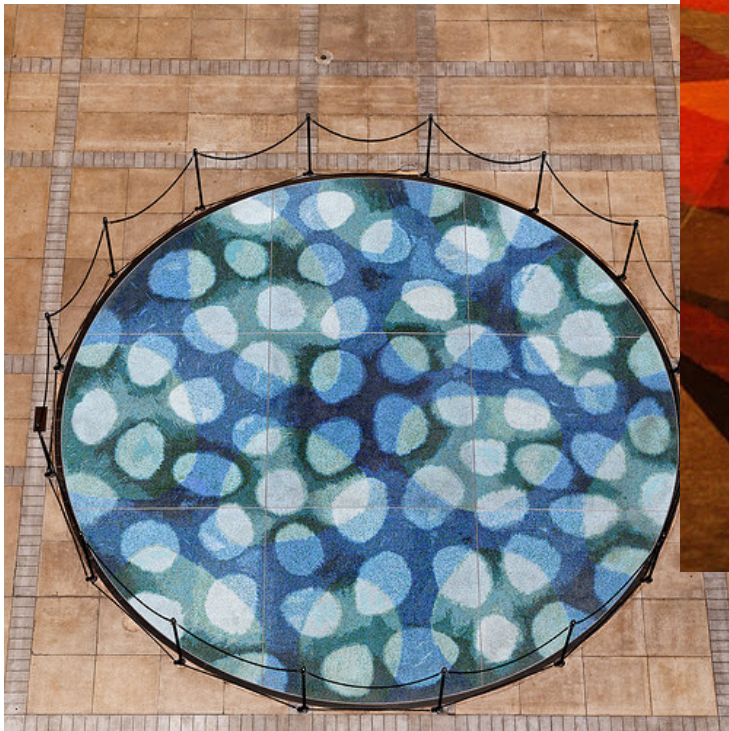


HAWAI'I STATE CAPITOL



HAWAI'I STATE CAPITOL

ART SELECTED BY
THE COMMITTEE



HAWAI'I STATE CAPITOL

HONOLULU CHAPTER AIA



**The American
Institute
of Architects**



PROGRESSIVE ARCHITECTURE

ARCHITECTURAL RECORD

**ARCHITECTURAL
RECORD**



ARCHITECTURAL FORUM

An aerial photograph of a large, intricate mosaic floor. The mosaic is composed of numerous small, square tiles in various shades of blue, teal, and green, creating a complex, organic pattern. The word "MAHALO!" is superimposed in the center of the image in a bold, white, sans-serif font. The background shows the texture and color variations of the mosaic tiles, which appear to be part of a larger architectural structure, possibly a courtyard or a large hall.

MAHALO!