

44TH ANNUAL

HISTORIC
HAWAII
FOUNDATION

PRESERVATION
HONOR AWARDS

WEDNESDAY, MAY 23, 2018, 5:00 – 8:00 P.M.

YWCA LANIĀKEA, FULLER HALL & COURTYARD
HONOLULU, HAWAII



ABOUT HISTORIC HAWAI'I FOUNDATION

Historic Hawai'i Foundation is a statewide non-profit organization that encourages the preservation of historic buildings, sites, communities and objects relating to the history of Hawai'i. Founded in 1974, Historic Hawai'i Foundation has become the driving force behind historic preservation in the state through its core programs of developing a community ethic of historic preservation, supporting smart legislation, and providing technical assistance to make preservation accessible.

www.historichawaii.org

HISTORIC HAWAI'I FOUNDATION BOARD OF TRUSTEES

Joanna Oshiro, *President*
Natalia Lagmay, *First Vice President*
Kevin Cockett, *Second Vice President*
Joy Davidson, *Secretary*
Ricky Ching, *Treasurer*
Linda Lee "Cissy" Farm, *At-Large*
J. Scott Meidell, *At-Large*
Thomas S. Witten, *At-Large*

Maenette Ah Nee Benham	Wendie McAllaster
Gregory Chun	Roy Murai
Will Crowley	Jim Niess
Donne Dawson	Lance Parker
Wayne Goo	Rick Piper
Pat Griffin	Christine Ruotola
Jason Ito	Benjamin Salazar
Rodney Ito	Jennifer Zelko-Schlueter
Lehua Kauhane	Lani Ma'a Lapilio, <i>ex officio</i>
Nancy Maeda	

STAFF

Kiersten Faulkner, *Executive Director*
Beth Iwata, *Director of Operations*
Andrea Nandoskar, *Education Program Manager*
Michelle Kiczek, *Development Assistant*

ABOUT THE PRESERVATION HONOR AWARDS

Historic Hawai'i Foundation's preservation awards have been presented annually since 1975. They are Hawai'i's highest recognition of projects that perpetuate, rehabilitate, restore or interpret the state's architectural and cultural heritage.

The honorees are selected by a committee comprised of professionals in architecture, history, planning, landscape architecture, architectural history, and design. Each nomination is considered on its own merits and not in competition with others.

"Since 1974 HHF has committed itself to the preservation of places that help tell Hawai'i's unique, multifaceted and fascinating story," states Pat Griffin, chairperson of the Awards committee. "One happy pleasure in fulfilling that mission is our annual celebration of others' success in completing exemplary preservation projects. This year's dedicated committee reviewed numerous efforts to repair and rehabilitate buildings and objects, interpret historical sites, prepare manuals for appropriate maintenance techniques, and more. The committee was well pleased with the quality of work we reviewed that is taking place around the state."

HONORS CATEGORIES

- **ACHIEVEMENTS IN INTERPRETIVE MEDIA** for a printed publication or visual presentation that interpreted the history, preservation or physical characteristics of a historic property.
- **INDIVIDUAL ACHIEVEMENT** recognizes an individual who engaged in advocacy, educational, programmatic or other activity supporting preservation efforts, either for a specific historic property or through a broad-based program.
- **PRESERVATION COMMENDATION** honors an organization or government agency that engaged in advocacy, educational, programmatic, or other activity supporting preservation efforts, either for a specific historic property or through a broad-based program.
- **PRESERVATION AWARD** recognizes a specific project that preserved, rehabilitated or restored a historic property.
- **ANNIVERSARY RECOGNITIONS** celebrate the rich history of kama'āina companies, organizations and institutions that are an important and integral part of the singular culture of the Hawaiian Islands.
- **THE FRANK HAINES AWARD** established in 2009 and named for master architect Frank Haines, FAIA, is presented to individuals who have demonstrated sustained and outstanding achievements in the areas of preserving the significant historic and cultural places of Hawai'i.

HONOR AWARDS SELECTION COMMITTEE

Pat Griffin, *Griffin Noyes Associates, Chairperson*
Dawn N. S. Chang, *Ku'iwalu*
Alison Chiu, *Fung Associates, Inc.*
Gregory Chun, *'Awa Kele*
Gary Coover, *Coover Consultants*
Kiersten Faulkner, *Historic Hawai'i Foundation*
Wayne Goo, *Workshop HI*
Tonia Moy, *Fung Associates, Inc.*
Jim Niess, *Mauai Architectural Group*
Lance Parker, *Alexander & Baldwin*
Christine Ruotola, *G70*
Adriane Truluck, *AECOM*

EVENT COMMITTEE

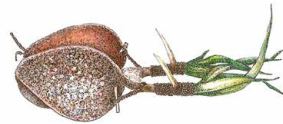
Wayne Goo, *Workshop HI, Chairperson*
Joy Davidson, *Mason Architects, Inc.*
Beth Iwata, *Historic Hawai'i Foundation*
Michelle Kiczek, *Historic Hawai'i Foundation*
Christine Ruotola, *G70*

SPECIAL MAHALO

Hagadone Printing Company
YWCA Laniākea and Café Julia
Workshop HI
Kelly Simek, *KHON2*
BK Photo
Topa Management Co.

HISTORIC HAWAI'I FOUNDATION THANKS OUR SPONSORS WHO HELPED MAKE THIS EVENT POSSIBLE:

GOLD SPONSORS



CULTURAL SURVEYS HAWAII
ARCHAEOLOGICAL, CULTURAL, AND HISTORICAL
DOCUMENTATION SERVICES - SINCE 1982



KAMEHAMEHA SCHOOLS®



JUSTIN & JANICE
SHON foundation



UNIVERSITY
of HAWAII®
WEST O'AHU



SILVER SPONSORS

Nan Inc



BRONZE SPONSORS



M20 Mason Architects
CELEBRATING twenty-years of preservation

eliminating racism
empowering women
ywca
O'ahu

"THE HISTORY OF LEPROSY/ HANSEN'S DISEASE IN HAWAI'I: SIGNIFICANT PEOPLE, EVENTS & DATES" BOOKLET

Kalaupapa, Moloka'i



This sixteen-page timeline is significant as an inclusive history of leprosy/Hansen's disease and of Kalaupapa. It includes notable dates associated with the historic figures of Father Damien and Mother Marianne, as well as lesser-known events, such as the accomplishments of people who were sent to Kalaupapa and the visits made by members of the royal family who were involved in improving the lives of people affected by leprosy. Personal photographs enhance the historical timeline.

- Ka 'Ohana O Kalaupapa
- Clarence "Boogie" Kahilihiwa, *President*
- Valerie Monson, *Executive Director*
- Anwei Law
- Henry Law
- Wayne Levin

HONOLULU HALE THROUGH THE TIMES EXHIBIT

Honolulu, O'ahu



Illustrates the history and architectural evolution of the City & County Honolulu Hale Building since it was constructed in 1928. The exhibit documents and helps to encourage public appreciation of this significant Honolulu landmark. It is also a fine example of partnership between the City, State Historic Preservation Division and private firms for historic preservation.

- City & County of Honolulu
- Minatoishi Architects
- State Historic Preservation Division



minatoishi
architects

Congratulations to all Historic Hawaii Preservation Award recipients
dedicated to preserving Hawaii's culture and heritage

Preservation Architecture Culture

HONOULIULI INTERNMENT CAMP EDUCATIONAL EXHIBIT

Kunia, O'ahu



Contributes to the education of the public about a crucial piece of Hawaii's history and Japanese American history that is often overlooked. The exhibit tells the story of the Camp through an interactive, multi-sensory environment, that helps visitors, especially the younger generation, imagine on a more personal level the struggle that Japanese-Americans faced during World War II and reminds them of a past that should not be repeated.

- Honouliuli National Monument, *National Park Service*
- Hawaii's Plantation Village
- Minatoishi Architects

WWII KĪLAUEA DETAINMENT CAMP WAYSIDE EXHIBITS

Hawai'i Volcanoes National Park, Hawai'i



Three interpretive waysides that highlight the history of the Japanese-American incarceration and detainment at Kilauea during World War II, providing on-site information for daily visitors. The waysides highlight the unique experiences of Japanese-Americans living on Hawai'i island who were isolated from the immediate impacts of the bombing of Pearl Harbor, yet became caught up in the nationwide fear, racial prejudice, and hysteria against people of Japanese ancestry that resulted from the war.

- Hawai'i Volcanoes National Park, *National Park Service*



MIKIO "MIKI" IZU

*Docent and Volunteer,
Kona Historical Society*



For the past three decades, Miki Izu has contributed hundreds of hours of service every year to Kona Historical Society and its two Smithsonian-affiliated museums and historic sites. A gifted storyteller, consultant, woodworker and carpenter, he has helped preserve the Kona Coffee Farm Living Museum's historic buildings and bring Kona's unique culture to life, particularly through his ability to engage and entertain visitors.

- Mikio Izu
- Kona Historical Society

JOHN B. WILLIAMS

*Architecture & Preservation
Volunteer*



Awarded for his tireless efforts to complete preservation projects for Docomomo US-Hawai'i, Historic Hawai'i Foundation, and American Red Cross of Hawai'i. Williams applies his wisdom and sophisticated intellect to deliver comprehensive research, documentation and other assistance that enables these organizations to share the history, art and architecture of Hawai'i.

- John B. Williams
- Docomomo U.S., *Hawai'i Chapter*
- American Red Cross of Hawai'i

From the individuals who *preserve*
to the institutions that have *persevered*—

Congratulations to all of this year's honorees!



JUSTIN & JANICE
SHON foundation

E ALA PA'AIAU FISHPOND RESTORATION

Kalauao/East Loch, O'ahu



A community effort to restore one of the last remaining loko i'a (fishponds) in the Keawalau o Pu'uuloa area. By working together to remove invasive plants and restore the fishpond's walls, community stakeholders and neighbors realized they share in common many values and goals. Generational family relationships were also rediscovered. This project not only helped to preserve Loko Pa'iaiu, built more than 600 years ago, it also resulted in a sense of healing and renewal for a community.

- Naval Facilities Engineering Command (NAVFAC) Hawai'i
- Ali'i Pauahi Hawaiian Civic Club
- 'Aiea Community Association
- Ku'uaina Ulu 'Auamo



Concrete, Masonry, and Metal Structures Repair and Maintenance Manual for Historic Facilities for Commander, Navy Region Hawai'i



2018 PRESERVATION HONOR AWARDEES

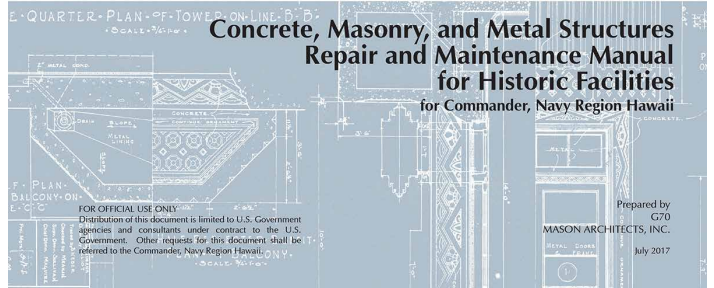
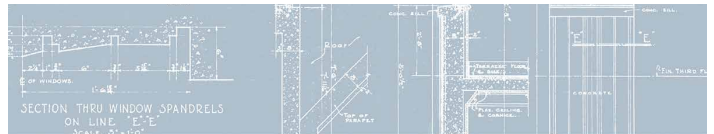
Congratulations!

g70.design

ARCHITECTURE | CIVIL ENGINEERING | INTERIOR DESIGN | PLANNING & ENVIRONMENT

JOINT BASE PEARL HARBOR- HICKAM CONCRETE, MASONRY AND METAL STRUCTURES REPAIR AND MAINTENANCE FOR HISTORIC FACILITIES MANUAL

Pearl Harbor, O'ahu



This Manual is intended to assist facility managers, planners, architects, officers and maintenance supervisors at various divisions, including, NAVFAC Hawai'i EV5 and Capital Improvements, in performing repair and maintenance projects for historic concrete, masonry, and metal structures. A primary objective of this document is to optimize project review and consultation time by the NAVFAC Hawai'i EV5 team.

- Commander Navy Region Hawai'i
- Joint Base Pearl Harbor-Hickam Command
- Naval Facilities Engineering Command, Hawai'i
- NAVFAC Hawai'i Historic Preservation Division (EV5)
- G70



Congratulations to the 2018 Preservation Honor Awards' participants. Mason Architects is proud to be part of Hawaii's preservation community.



BATTLESHIP MISSOURI MEMORIAL PRESERVATION OF SUPERSTRUCTURE AND BRIDGES

Pearl Harbor, O'ahu



Comprehensive repairs and preservation to the exterior of the Battleship Missouri Memorial's superstructure above the 05 level, including the forward fire control tower, forward stack, and forward mast. The largest repair and preservation effort to take place on the battleship since the ship was decommissioned in 2010, this project returned the *USS Missouri* to her former glory, helping to educate present and future generations about her historic role in times of peace and war.

- Battleship Missouri Memorial
- Sight + Sound Studios

FORD ISLAND BUILDING 39 WINDOW RESTORATION

Pearl Harbor, O'ahu



Restored all of the original 1932 steel multi-lite pivot industrial windows of Building 39, a former engine and aircraft overhaul shop that has served an important function in national conflicts since World War I. Because the building was not required to be Anti-Terrorism Force Protection compliant, it was possible to retain and restore the original windows, rather than replace them, helping to preserve the historic integrity of the building's exterior.

- Commander Navy Region Hawai'i
- NAVFAC Hawai'i EV5
- Mason Architects, Inc.
- Nan, Inc.
- Talion Construction



IT TAKES A KAIĀULU

Whether in the classroom or in the community, we can accomplish greater things for our lāhui when we work together.

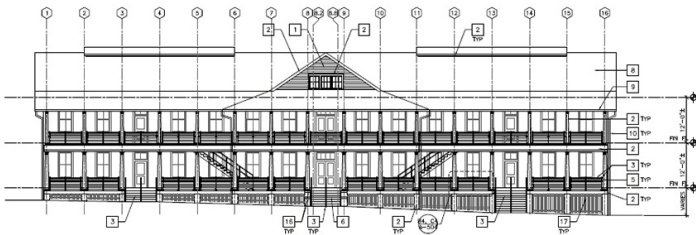
See how we are working side-by-side with others at www.ksbe.edu/sp2020.



KAMEHAMEHA SCHOOLS®

FORT SHAFTER BUILDING 112 AT PALM CIRCLE REHABILITATION

Fort Shafter, O'ahu



An exemplary model of preservation, this project strengthened the structural systems of this 110-year old wood-frame building and rehabilitated its character-defining features, including its roof, full-length front and back porches, original divided lite windows, colonial columns, and clapboarding. As a result of this project, the building received LEED Silver certification for its energy use and environmental design.

- U.S. Army Garrison, Hawai'i
- U.S. Army Garrison, Hawai'i, Directorate of Public Works
- U.S. Army Corps of Engineers, Honolulu District
- Fung Associates, Inc.
- GSI Pacific

FORT SHAFTER BUILDING 339 REHABILITATION

Fort Shafter, O'ahu



Originally built in 1917 as a small arms shop, Building 339 is part of the Hawaiian Ordnance Depot historic district. Historic exterior features, such as the gable roof, stucco finish and original double hung windows, were preserved while the building's interior was repurposed to current needs. The upper floors of the building were converted into office space and the single-story warehouse is now a dental facility.

- U.S. Army Garrison, Hawai'i
- U.S. Army Garrison, Hawai'i, Directorate of Public Works
- Bowers and Kubota
- United Excel Corporation



ELITE PACIFIC CONSTRUCTION

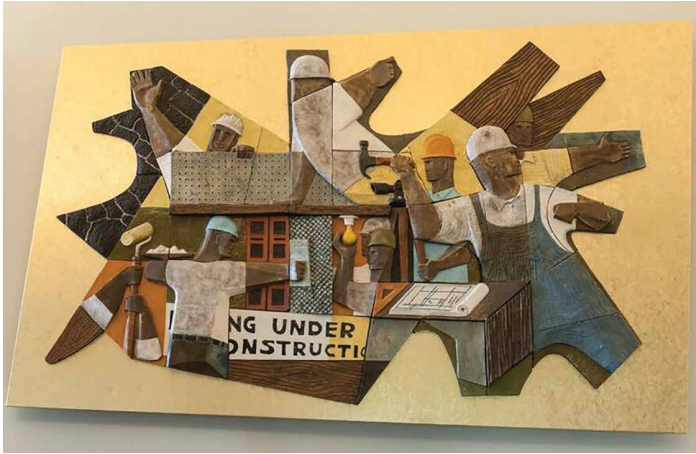
CONGRATULATIONS!!

To the ENOMOTO MURALS
PROJECT
on receiving a prestigious
2018 Preservation Award!

We are proud to have been part
of the team.

ISAMI ENOMOTO LABOR MURALS PRESERVATION

*Center for Labor Education and Research,
University of Hawai'i, West O'ahu*



Awarded for the restoration, relocation, and re-installation of five ceramic murals created in 1961 by artist Isami Enomoto. These large murals, each roughly six feet in height by up to eleven feet in width, vividly capture the rise of the labor movement and the Democratic working class in Hawai'i in the 1960s. After an intensive restoration, the murals were relocated to the Center for Labor Education and Research on the campus of University of Hawai'i, West O'ahu, an impactful, publicly accessible location.

- Bank of Hawaii
- Isami Enomoto Trust
- Docomomo US-Hawai'i
- Center for Labor Education and Research, University of Hawai'i, West O'ahu
- Elite Pacific Construction, Inc.
- Nagamine Okawa Engineers Inc.
- Wallpaper by Dane

KĪLAUEA POINT NATIONAL WILDLIFE REFUGE VISITOR SERVICE BUILDING REHABILITATION

Kīlauea, Kaua'i



The windows, interior finishes and other character-defining features of this historic building were meticulously preserved, while the building's infrastructure was updated to current industry code. Used as the light keeper's residence in the past, the building is now a visitor center that will also be used for community history and story-telling events.

- U.S. Fish & Wildlife Service
- Niking Corporation
- Fung Associates, Inc.
- Coffman Engineers, Inc.
- The Chong Group, LLC



KONA COFFEE LIVING HISTORY FARM FARMHOUSE ROOF REHABILITATION

Captain Cook, Hawai'i



The roof replacement protected the historic farmhouse from damage by rain leakage and termite infestation. Through the use of appropriate materials and rehabilitation strategies, attention was given to retain an aged and used appearance, maintaining the farmhouse's historic integrity and enhancing visitors' experience at this unique living history farm.

- Kona Historical Society
- Paul M. Donoho, AIA
- Tinguely Development, Inc.

KUNIA VILLAGE HOUSING DEVELOPMENT REHABILITATION

Kunia, O'ahu



The former plantation camp was rehabilitated to provide low-income housing to farm workers and their families. The goal of providing housing was met in two ways: the rehabilitation of 45 historic houses and the construction of 37 new houses designed to be compatible with the historic ones. All sewer, water and electrical lines to the rehabilitated houses were replaced and a pump house was installed to increase water pressure to each property. This project is an exemplary master plan for plantation housing rehabilitation.

- Kunia Village Development Company
- Kunia Village Title Holding Corp.
- Lendlease
- Mason Architects, Inc.
- Rural Quality LLC
- Hawai'i Agricultural Research Center

CONGRATULATIONS

2018 Preservation Honor Awards
Historic Hawai'i Foundation



Kunia Village Housing Development

Kunia Village Development Company, Kunia Village Title Holding Corporation, Lendlease, Mason Architects, Inc., Rural Quality LLC, and Hawai'i Agricultural Research Center

100th Anniversary

Commanding General's House 227 at Schofield Barracks

U.S. Army Garrison-Hawaii

MAKAPU'U LIGHTHOUSE PRESERVATION

Makapu'u Point, O'ahu



Restoration of the Lighthouse's exterior, including the roof, door panel and ladder rails, following the Secretary of the Interior's Standards for the Treatment of Historic Properties. The project overcame unique challenges—difficult access conditions, high winds, and being located in a high-profile area frequented by thousands of kama'āina and visitors on a daily basis—to complete a beautiful restoration and ensure the lighthouse's continued operational use by the U.S. Coast Guard.

- Heartwood Pacific LLC
- Honolulu Ironworks Inc.
- Covenant Painting LLC
- Kalu Glass

CONGRATULATIONS

To the leadership and workmanship of Heartwood Pacific's team

- Gary Danzl, superintendent
- Kimo Goodness of Covenant Painting
- Frank Vyvoda of Honolulu Ironworks
- Al Linton of Kalu Glass

General Contractor, P.O. Box 1719, Keaau, HI 96749. 808-327-6700. heartwoodpacific.com

PACIFIC AVIATION MUSEUM MIDWAY MURALS PRESERVATION

Pearl Harbor, O'ahu



Preservation of six murals painted by Victor Nels Solander depicting Naval Air Station Midway Islands during World War II. Through meticulous cleaning, repair and research of these murals, this project provides a visual record of one of the most pivotal battle sites in the world and helps to honor the sacrifice and courage of the men who fought there. Today the murals are on display at the Pacific Aviation Museum with interpretive signage that shares their story.

- Navy Information Operations Detachment, Kāne'ohe Bay, Marine Corps Base Hawai'i
- Pacific Aviation Museum Pearl Harbor
- U.S. Fish & Wildlife Service



SCHOFIELD BARRACKS MACOMB GATE REHABILITATION

Schofield Barracks, O'ahu



Awarded for the cleaning, repair, and painting of the two concrete guard buildings, concrete wall extensions and decorative features of the Gate. Macomb Gate represents one of the first of several structures built in the Art Deco style of the 1930s by the 3rd Engineers Division and is one of two entrances to Schofield Barracks, the largest Army base outside of the continental United States.

- U.S. Army Garrison, Hawai'i
- U.S. Army Garrison, Hawai'i, Directorate of Public Works

SCHOFIELD BARRACKS QUAD B (BUILDINGS 156, 157 AND 158)

Schofield Barracks, O'ahu



This project preserved original architectural features of Quad B—its fenestration pattern, historic window and door types and decorative eaves, as well as the concrete roads inside the central courtyard. Interior living quarters were updated with larger rooms, energy efficient air conditioning and solar power. Over 100 years old, Quad B will be enjoyed as comfortable living quarters for years to come.

- U.S. Army Garrison, Hawai'i
- U.S. Army Garrison, Hawai'i, Directorate of Public Works
- U.S. Army Corps of Engineers, Honolulu District
- Bowers and Kubota
- Nan, Inc.

Nan Inc
*congratulates all of
 the award recipients
 in preserving
 Hawai'i's precious
 heritage*

636 Laumaka Street, Honolulu, Hawaii 96819
 808-842-4929 | www.nanhawaii.com

TRIPLER ARMY MEDICAL CENTER BUILDING 220 REHABILITATION

Moanalua, O'ahu



The project rehabilitated the building's original design features, including removal of the non-original asphalt shingles and restoration of the original Mission-style clay tile roof. Extended eaves with custom-contoured rafter stops and customized solid staining were restored; the exterior was repainted its original color and interior floors were also restored. Its rehabilitation complete, the building is now used as functional office space for medical interns.

- U.S. Army Garrison, Hawai'i
- U.S. Army Garrison, Hawai'i, Directorate of Public Works
- West Coast Roofing

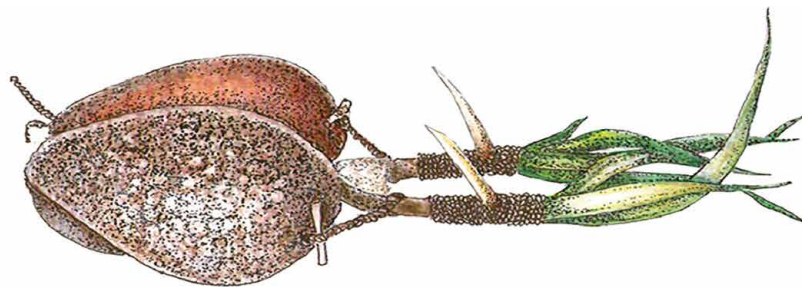
WASHINGTON PLACE GALLERIES REHABILITATION & RESTORATION

Honolulu, O'ahu



Awarded for the rehabilitation and restoration of the 1920s-era second floor structure, removal of the screened porch addition, and restoration of historic site lighting fixtures, gate posts and door hardware. Comprehensive structural improvement has made it possible for the second floor to be open to the public for group classes, lectures, and viewing of historic artifacts in four gallery rooms. Completion of these four restoration projects was a significant step in meeting the overall restoration and preservation goals of the property envisioned by Queen Lili'uokalani.

- State of Hawai'i, Dept. of Accounting & General Services, Construction Management Branch
- Mason Architects, Inc.
- Brian's Contracting
- Tropical Lamp & Shade



CULTURAL SURVEYS HAWAI'I

ARCHAEOLOGICAL, CULTURAL, AND HISTORICAL
DOCUMENTATION SERVICES - SINCE 1982

**YWCA LANIĀKEA 'EWA WING
FAÇADE AND ROOF RESTORATION**

Honolulu, O'ahu



Awarded for exterior repairs and restoration of the balconies, balustrades, railing and roofing of the 'Ewa Wing. Aesthetically, the façade above Café Julia and the courtyard is greatly enhanced, with balcony metalwork and concrete repaired and the entire wall fully repainted. Safety concerns were addressed through improvements to the balustrade system, roof and railings, along with concrete and plaster repairs. This project was a significant restoration of the only building remaining in Hawai'i designed by architect Julia Morgan and a beloved community gathering place.

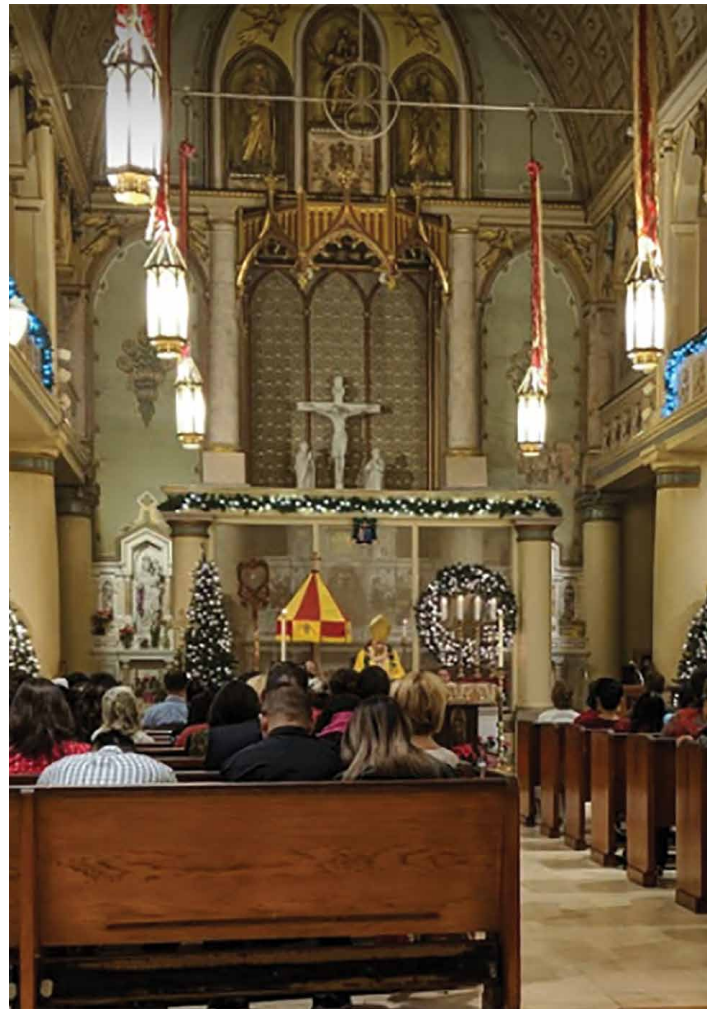
- YWCA O'ahu
- Ferraro Choi and Associates, Ltd.
- Koa Design & Construction Group
- Constructors Hawai'i, Inc.

175 YEARS

*Dodransbicentennial
Anniversary*

**CATHEDRAL BASILICA
OF OUR LADY OF PEACE**

O'ahu



YWCA O'ahu
warmly congratulates the
**2018 Preservation Honor
Award Honorees!**

WE'RE ON A MISSION, JOIN US!

1040 Richards St., Honolulu, HI 96813
808.538.7061 | www.ywcaoahu.org

eliminating racism
empowering women
ywca
O'ahu



*Castle & Cooke
Hawaii*

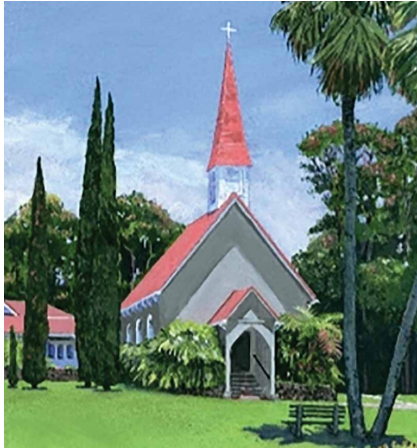
INVESTING IN HAWAII
CREATING COMMUNITIES
DELIVERING DREAMS

Real Estate Development & Financing • Commercial &
Retail • Agriculture • Aviation • Renewable Energy

808-548-4811
www.castle-cooke.com

150 YEARS

*Sesquicentennial
Anniversary*



**CHRIST
CHURCH
EPISCOPAL
KEALAKEKUA**
*Hawai'i Island
(2017)*

125 YEARS

*Quasiquicentennial
Anniversary*

BISHOP MUSEUM PRESS
O'ahu



100 YEARS

*Centennial
Anniversary*

**'AIEA TAIHEIJI SOTO
MISSION**
O'ahu



**ARMED SERVICES
YMCA OF
HONOLULU**
O'ahu (2017)



**COMMANDING
GENERAL'S HOUSE
227 AT SCHOFIELD
BARRACKS**
O'ahu



**CONSOLIDATED
THEATRES**
O'ahu (2017)



CONSOLIDATED THEATRES

*Mahalo
for 100 years!*

ConsolidatedHI
www.consolidatedtheatres.com

100 YEARS
Centennial Anniversary

HALE'IWA KOSHOJI SHINGON MISSION
O'ahu



HĀMĀKUA JODO MISSION
Hawai'i Island



HANAHAU'OLI SCHOOL
O'ahu



HAWAIIAN CIVIC CLUB OF HONOLULU
O'ahu



HAWAI'I NURSES ASSOCIATION
Statewide (2017)



100 YEARS
Centennial Anniversary

HILO TAISHOJI SOTO MISSION BUILDING
Hawai'i Island



HONPA HONGWANJI BETSUIN TEMPLE
O'ahu



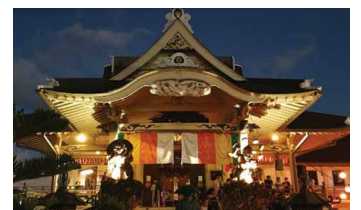
LYON ARBORETUM
O'ahu



PU'UNĒNĒ NICHIREN MISSION
Maui



SHINGON SHU HAWAI'I TEMPLE
O'ahu (2017)



LARGE & IN CHARGE

Hagadone Printing brings large format signage that can unlock additional revenue streams along with a range of new application offerings. Don't wait, call today!

HAGADONE

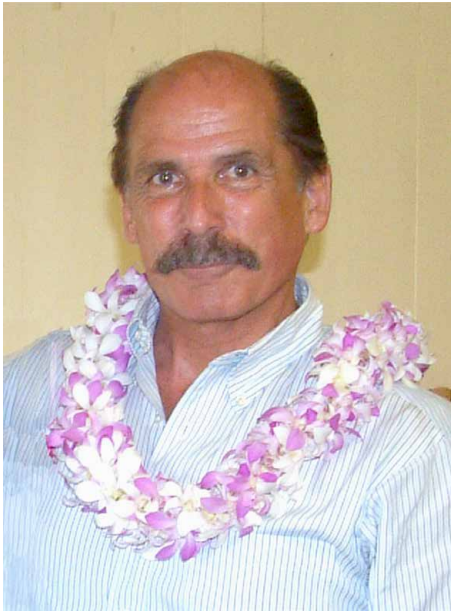
HAWAII

CALL (808) 847-5310

www.HagadonePrinting.com

ROBERT J. SCHLECK

Director of Wai'oli Corporation (retired)

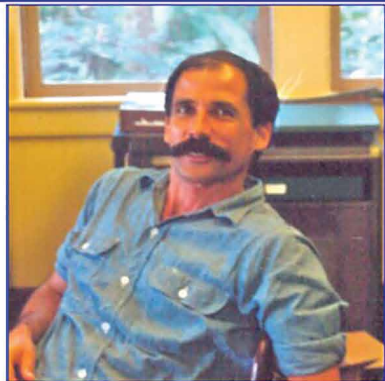


Schleck has been involved in the preservation of Wai'oli Mission House, Grove Farm and other historic sites on Kaua'i since 1971 when he began working for Miss Mabel Wilcox, the benefactor who bequeathed her family home and other historic buildings to be preserved as museums for the public. Since that time, Schleck has helped to preserve the culture, buildings, landscape and lifestyle of not only Wai'oli Mission House, but also the ahupua'a of Lepeuli, the plantation and immigrant stories of Grove Farm, and the Farm's sugar plantation locomotive collection in Līhu'e. He also helped initiate the Sugar Plantation Locomotive Interactive Learning Park.

Schleck served as the project supervisor of the historic Kaua'i County Building rehabilitation in Līhu'e which began in 1982 and spanned 22 years. He has also served as president of the Hawai'i Museums Association and as a board member of the Kaua'i Historical Society and Līhu'e Cemetery. He is the author of the book, "The Wilcox Quilts in Hawai'i".

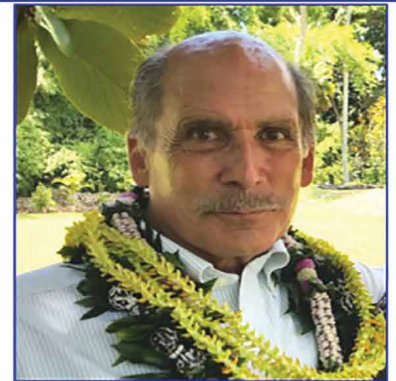
Historic Hawai'i Foundation salutes Robert Schleck for his lifelong dedication to historic preservation.

The Haines Award was established in 2009 and named for master architect Frank Haines, FAIA. It is presented to individuals who have demonstrated sustained and outstanding achievements in the areas of preserving the significant historic and cultural places of Hawai'i.



Robert Schleck when he first began working for Miss Mabel in 1971

Congratulations Bob on receiving the Historic Hawaii Foundation's Frank Haines Award!
We are truly grateful for your 46 year commitment to the legacy of Miss Mabel Wilcox, and for ensuring the preservation of the exceptional properties she left in trust to Waioli Corporation for the Kauai community.
Aloha nui loa,
All of us at Waioli Mission House and Grove Farm museums



Robert Schleck just prior to his retirement as Museums' Director in 2017

**Together, we
make historic
places a
vibrant part
of our
communities.**



YWCA Laniakea photographed by Rhonda Jones

Aloha,

From Kilauea Point on Kaua'i to Kilauea on Hawai'i, thanks to the accomplishments of our honorees, our communities will continue to benefit from the beauty and rich history of the places we honor this evening. These achievements reflect the diversity of our islands and remind us that through collaboration, whether through grassroots efforts or business partnerships, people make preservation happen.

Mahalo for your support of the 2018 Preservation Awards.

Kiersten Faulkner

Kiersten Faulkner
Executive Director
Historic Hawai'i Foundation

HISTORIC
HAWAII
FOUNDATION



HISTORIC HAWAII FOUNDATION

HONORS

Matson

KAMA'ĀIHA of THE YEAR 2018

SATURDAY, OCTOBER 27, 2018

5:30 PM - 10:00 PM

THE ROYAL HAWAIIAN, A LUXURY COLLECTION RESORT

See www.historichawaii.org for event details and to reserve your table.



**HISTORIC
HAWAII
FOUNDATION**

680 Iwilei Road, Suite 690
Honolulu, HI 96817

TEL: 808-523-2900
FAX: 808-523-0800