

ANDREW MORI

PLACES SIGNIFICANT
TO ME

INSPIRATION

MY IDENTITY, CULTURE, AND MANY HOMES

I grew up in Mililani and started with one home. However, life is messy and complicated...

I used to only stay in Mililani, but I'm not as sheltered anymore. I ventured out and went to different places.

I have many places I call home now and have ties to.

MILILANI MAUKA

AROUND MY
HOMETOWN

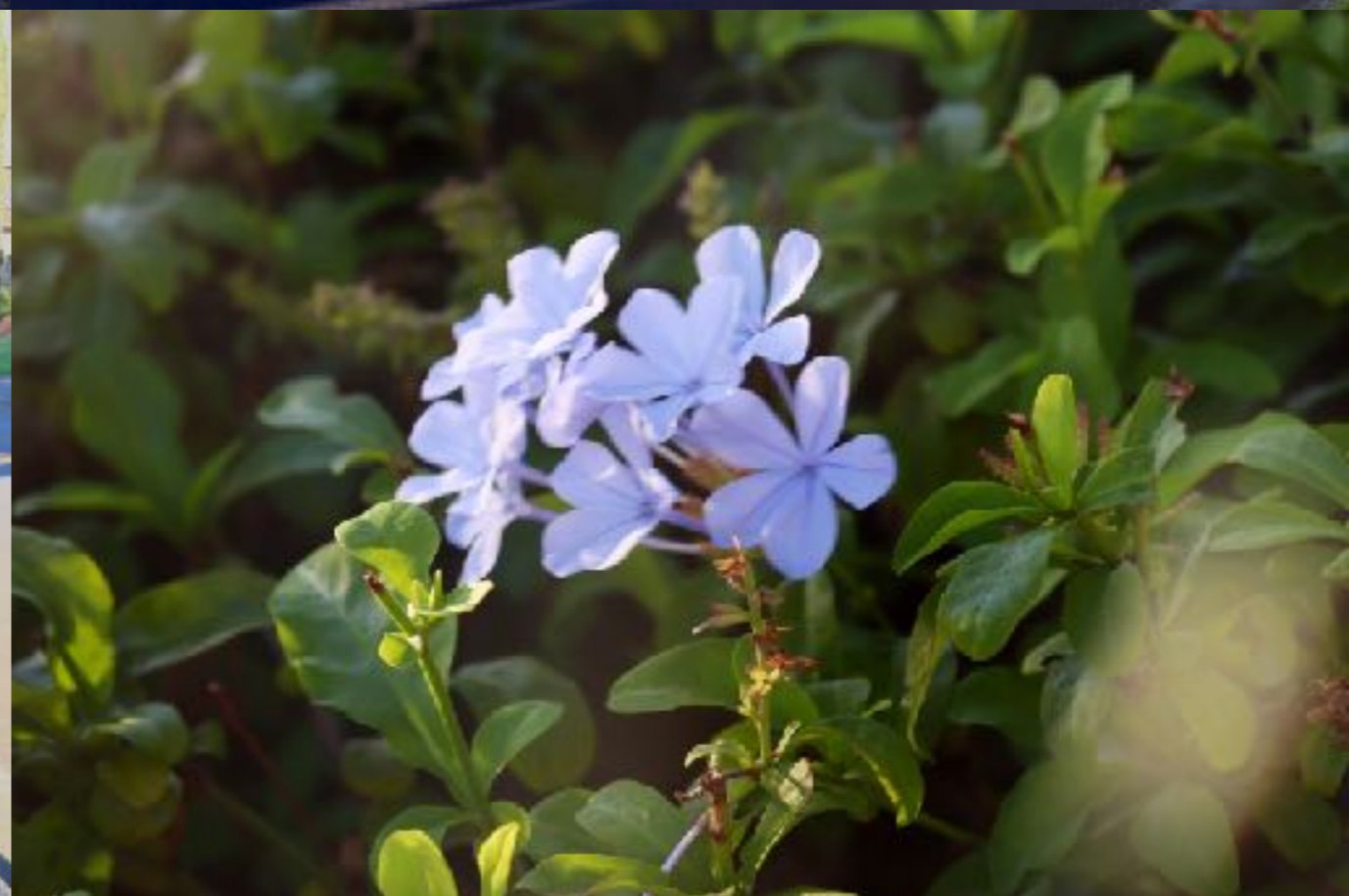
















MILILANI MAUKA

MY DAD'S TOWNHOUSE











PEARL CITY

MY GRANDMA'S HOUSE















HONOLULU

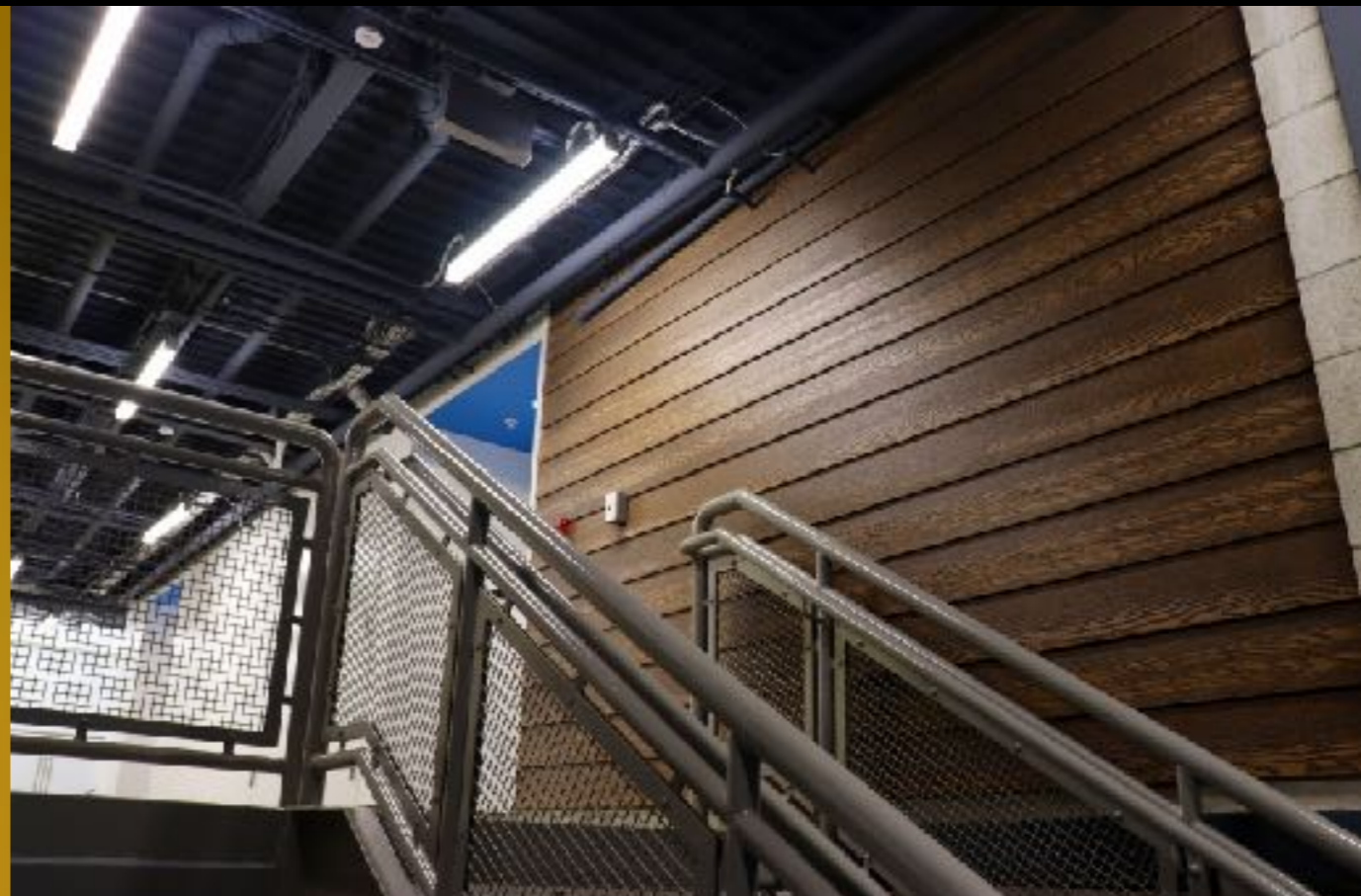
MY MOM'S APARTMENT





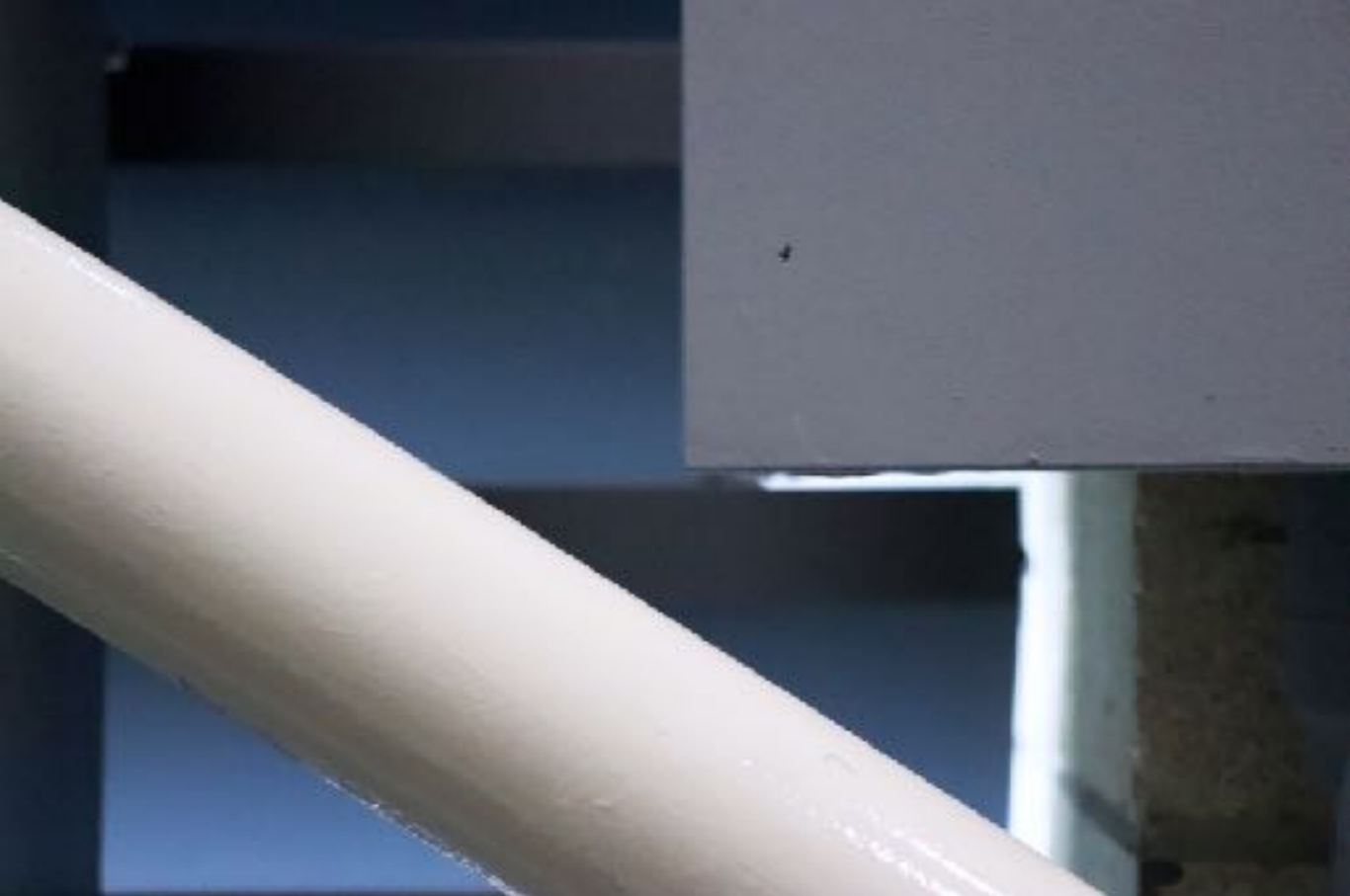
HONOLULU

PACIFIC BUDDHIST
ACADEMY











MŌ'ILĪ'ILĪ

JAPANESE CULTURAL
CENTER OF HAWAII'Ī





KENSHIKAN DOJO

ESTABLISHED IN 1994
IN MEMORY OF



ESTABLISHED IN 1994
IN MEMORY OF
KENSHIRO OTSUKA
1895 - 1989
TOCHIGI PREFECTURE JAPAN

創業30周年
設立10周年 記念植樹
(ANPビル 77号 プラント)

— 3年目、7年目 —
 パワイドビルにて植栽の日、皆様が美しく育ち、この建物の歴史と共に
 共に育ちたいと願っております。 (1993.3.22)

所在地: 釜谷ビルディング
 7階南側 西平 事務所
 広島市西区日通4丁目17番15号
 〒 733-1711-0000 Fax 012-471-0001

**MEMORIAL TREE
PLANTING**

In Commemoration of the
 10th Anniversary of the "All Green Plaza Company Ltd."
 and the 30th Anniversary of its general establishment.

With the planting of this tree, we hope to encourage a
 progressive cultural development as well as a concrete future.
 (September 22, 1993)

All Green Plaza Company Ltd.
 Hiroshi Tanaka
 5-17-15 Nishinaka, Hiroshima
 Hiroshima Japan 733
 Tel: 011-81-82-272-0000
 Fax: 011-81-82-272-0001















