

**HISTORIC
HAWAII
FOUNDATION**

**42nd ANNUAL
PRESERVATION
HONOR AWARDS**

Friday, May 27, 2016
Pōmaika'i Ballrooms at Dole Cannery
Honolulu, Hawai'i

ABOUT THE PRESERVATION HONOR AWARDS

Historic Hawai'i Foundation's preservation awards have been presented annually since 1975. They are Hawai'i's highest recognition of projects that perpetuate, rehabilitate, restore or interpret the state's architectural and cultural heritage.

The honorees are selected by a committee comprised of professionals in architecture, history, planning, landscape architecture, architectural history and media. Each nomination is considered on its own merits and not in competition with others.

HONORS CATEGORIES

- *Achievements in Interpretive Media* for a printed publication or visual presentation that interpreted the history, preservation or physical characteristics of a historic property.
- *Preservation Commendation* for an individual, organization or government agency that engaged in advocacy, educational, programmatic, or other activity supporting preservation efforts, either for a specific historic property or through a broad-based program.
- *Preservation Award* for a specific project that preserved, rehabilitated or restored a historic property.
- *Anniversary Recognitions* in celebration of the rich history of the kama'āina companies, organizations and institutions that are an important and integral part of the singular culture of the Hawaiian Islands.
- *Frank Haines Award*, established in 2009 and named for master architect Frank Haines, FAIA, is presented to individuals who have demonstrated sustained and outstanding achievements in the areas of preserving the significant historic and cultural places of Hawai'i.

HONOR AWARDS SELECTION COMMITTEE

Dawn N. S. Chang, Ku'iwalu
Kiersten Faulkner, Historic Hawai'i Foundation
Wayne Goo, Goo Design
Loriann Gordon, Loriann Gordon Landscape Architect
Pat Griffin, Griffin Noyes Associates
Tanya Gumapac-McGuire, Historic Hawai'i Foundation
Richard Houck, Hawaiian Electric Company
Michael Keany, HONOLULU Magazine
Tonia Moy, Fung Associates, Inc.
Lance Parker, Alexander & Baldwin Properties
Ronald Sato, HHF Planners
Tom Young, Group 70 International

EVENT COMMITTEE

Joy Davidson, Mason Architects, Inc.
Wayne Goo, Goo Design
Richard Houck, Hawaiian Electric Company
Elisabeth Iwata, Historic Hawai'i Foundation
Joanna Kawamoto, Deloitte & Touche
Christine Ruotola, Group 70 International

SPECIAL MAHALO

Deloitte & Touche
BK Photo
Hagadone Printing Company
Kathy Muneno and Justin Cruz, KHON
Pōmaika'i Ballrooms
PSAV
Topa Management Company

HISTORIC HAWAII FOUNDATION BOARD OF TRUSTEES

Joanna Kawamoto, President
Les Y. Goya, First Vice President
Natalia Lagmay, Second Vice President
Kevin Cockett, Secretary
Ricky Ching, Treasurer
Cissy Farm, At-Large
Joy Davidson, At-Large
Kimo Todd, Past President

Jean Campbell	Jim Niess
Blair D. Collis	Lance Parker
Donne Dawson	Rick Piper
Wayne Goo	William Pratt
Richard Houck	Christine Ruotola
Jason Ito	Benjamin Salazar
Rodney Ito	Thomas Witten
Nancy Maeda	Lani Ma'a Lapilio , ex officio
J. Scott Meidell	

STAFF

Kiersten Faulkner, Executive Director
Tanya Gumapac-McGuire, Preservation Associate
Elisabeth Iwata, Director of Operations
Andrea Nandoskar, Membership and Communications Coordinator

Historic Hawai'i Foundation
680 Iwilei Road, Suite 690
Honolulu, Hawai'i 96817
TEL: 808-523-2900
FAX: 808-523-0800

Historic Hawai'i Foundation is a statewide non-profit organization that encourages the preservation of historic buildings, sites, communities and objects relating to the history of Hawai'i. Founded in 1974, Historic Hawai'i Foundation has become the driving force behind historic preservation in the state through its core programs of developing a community ethic of historic preservation, supporting smart legislation, and providing technical assistance to make preservation accessible. www.historichawaii.org

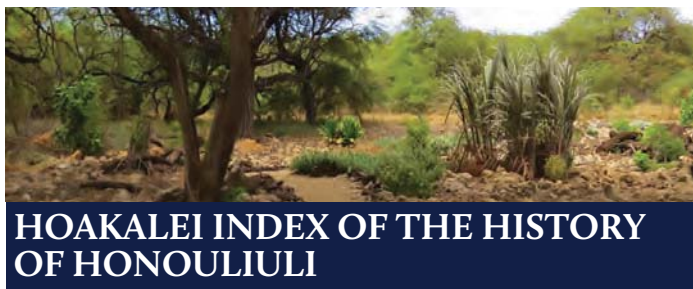
PREMIUM TABLE SPONSORS



IN-KIND CONTRIBUTORS



ACHIEVEMENTS IN INTERPRETIVE MEDIA



An index of articles and historic documents relating to the history of Honouliuli. This study incorporates a wide range of historical literature along with oral history and consultation interviews with individuals identified as being knowledgeable of the traditions and history of the Honouliuli ahupua'a. The study was indexed so that the material can be browsed or searched easily. The information is available online where it can be accessed by the public. The goal of the project is to educate the public on the history of Honouliuli in a time when changes to the landscape happened at a blinding pace.

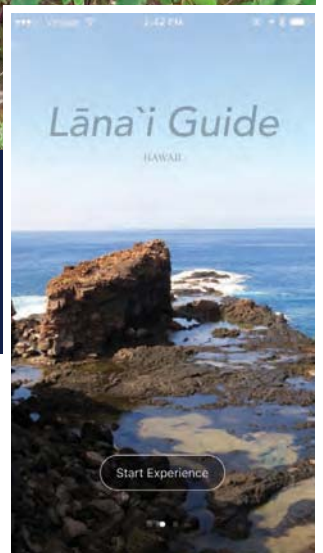
- Hoakalei Cultural Foundation
- T. S. Dye & Colleagues, Archaeologists, Inc.
- Kumu Pono Associates, LLC
- Ms. Olan Leimo Morgan
- Haseko ('Ewa) Inc.
- Upspring Media
- I!360 Inc.



LĀNA'I GUIDE GPS WEB-ENABLED APPLICATION FOR STORIED PLACES OF LĀNA'I

The Lāna'i Guide is a GPS web-enabled application that provides an interactive walking, driving or cycling tour to noted places of Lāna'i's bio-cultural landscape, and serves as a digital guidebook. One of the major initiatives of the Lāna'i Culture & Heritage Center is to emphasize outreach and improve access to the tangible and intangible heritage of Lāna'i. The app provides users with access to information covering the geology, natural history, Hawaiian settlement, traditions, and historic landscape of Lāna'i.

- Lāna'i Culture & Heritage Center
- Pūlama Lāna'i
- Koa IT



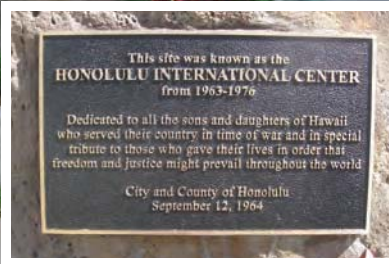
Congratulations Lāna'i Culture and Heritage Center and Koa IT for your creation of the Lāna'i Guide app!



MĀKUA & KAHANAHAIKI INTERPRETIVE SIGNAGE

The development and installation of the interpretive signage at Mākua Military Reservation shares a chronological account of the area’s history and encourages audiences to appreciate the cultural importance of this celebrated and storied place of Hawai’i. Local community members are dedicated to the preservation of Mākua’s natural and cultural resources and desire to see the valley properly and respectfully managed. The interpretive signage aids the Army’s effort to protect Mākua’s resources by encouraging audiences to appreciate its historical and cultural importance and to influence viewers to support stewardship.

- U.S. Army Garrison- Hawaii
- The Directorate of Public Works, Environmental Division-USAG-HI
- Conservation Branch-USAG-HI
- Cultural Resources Program-USAG-HI
- Research Corporation of the University of Hawai’i, DPW Environmental Division



NEAL S. BLAISDELL CENTER WAR MEMORIAL SIGNAGE

The project was the installment of a replacement memorial sign to recognize Neal S. Blaisdell Center as Honolulu’s war memorial auditorium. The Center was originally planned as a War Memorial Municipal Auditorium and was dedicated as a living memorial to Hawai’i’s war veterans. This history was re-discovered in 2010 and work began to educate the public on its forgotten memorial roots. Local advocates collaboratively approached the City Council, which passed a resolution requesting the administration to rededicate Neal S. Blaisdell Center as a war memorial. Subsequently, a new memorial plaque was installed as a permanent marker to educate the public of the Center’s war memorial designation and the significance of the facility as a living memorial.

- Neal S. Blaisdell Center War Memorial Project
- Department of Enterprise Services
- Mayor’s Office of Culture and the Arts
- Managing Director’s Office
- Councilmember Ann Kobayashi
- Councilmember Carol Fukunaga
- Municipal Reference Center



Congratulations to all Historic Hawai’i Foundation honorees for your efforts to preserve Hawai’i’s cultural heritage.

*‘A ‘ohe hana nui ke alu‘ia
No task is too big when done together by all*

Learn more about our efforts:
www.hoakaleifoundation.org





“THE PRIDE OF A NATION” VIDEO

The 5-minute video introduction to the history of Kalaupapa focuses on the people who were sent there because of a diagnosis of leprosy or as family members to patients. The video was intentionally kept short to keep the interest of viewers, but filled with enough compelling information that they would want to learn more about the people of Kalaupapa. The video shows photographs of people at work, at home or dressed for special occasions. Ka ‘Ohana O Kalaupapa now uses the video to introduce presentations to audiences and school groups or to simply run on a loop at a gallery or other location hosting an exhibit about Kalaupapa.

- Ka ‘Ohana O Kalaupapa
- Mr. Stephen Inglis
- Mr. Kalapana Kollars



DR. DENNIS HIROTA

Dr. Hirota has focused his lifelong passion of using advanced technology to solve practical problems by utilizing his equipment and skills to record many historic sites. Recognizing the potential for loss of any of Hawai‘i’s historic sites from a number of threats, Dr. Hirota sees the value in preserving information about our heritage so that permanent record can transmit knowledge of these places to future generations. Dr. Hirota has photo-documented many historic sites in a manner not previously attainable, due to both the level of detail possible, as well as the ability to record areas that are difficult or dangerous to access.

- Dr. Dennis Hirota



3D laser scan of historic Hangar 101, Marine Corps Base Hawaii, Kaneohe Bay

CONGRATULATIONS
to
Dr. Dennis Hirota
on his 2016
Preservation Honor Award
and to all of the 2016 honorees
for their outstanding
contributions to preserving
Hawaii’s history

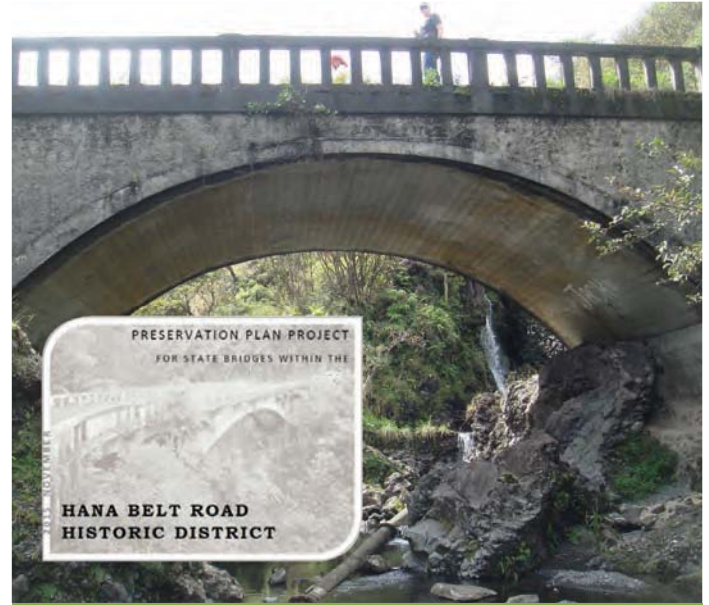
Sam O. Hirota, Inc.
Civil Engineering | Surveying | 3D Imaging
samhirota.com



E 'IKE HOU IĀ LĀNA'I

This program is an initiative that engages the community and school in a collaborative effort that teaches students about cultural and archaeological resources. In an effort to understand and act upon the depth and extent of cultural resources that are a part of Lāna'i's landscape, a significant collection of archival-historical research has been compiled. This information is integral to the process of documenting archaeological and cultural landscapes. The program encourages students to respect cultural and archaeological resources and provides students with exposure to what it can be like to pursue a career in preservation.

- Lāna'i Culture & Heritage Center
- Pūlama Lāna'i
- Honua Consulting
- Lāna'i High and Elementary Schools



HĀNA BELT ROAD HISTORIC DISTRICT STATE BRIDGES PRESERVATION PLAN

The preservation plan presents preservation treatment and recommendations for historic bridges and culverts within the Hāna Belt Road historic district. The plan provides guidance for the State of Hawai'i Department of Transportation regarding future rehabilitation projects along this highway. The plan identified the historic features of each bridge and culvert, evaluated each structure's compliance with current acceptable safety standards, conducted community and agency consultation, and prepared recommendations for the treatment of each bridge and culvert, considering historic qualities, public safety, funding options, and community and agency input.

- State of Hawai'i Department of Transportation, Highway Division, Design Branch, Bridge Design
- Nagamine Okawa Engineers, Inc.
- Fung Associates Inc.
- Ms. Virginia Murison, AIA
- Munekiyo & Hiraga, Inc.
- Austin, Tsutsumi & Associates, Inc.
- Cultural Surveys Hawai'i
- Ronald NS Ho & Associates Inc.



TRADITIONS AND STORIED PLACES IN THE DISTRICT OF 'EWA AND MOANALUA: A TRADITIONAL CULTURAL PROPERTY STUDY

The Honolulu Authority for Rapid Transportation undertook a Traditional Cultural Property (TCP) study, which is a comprehensive historical literature review of cultural practices, mo'olelo, land tenure, and ethnographic interviews of Districts of 'Ewa, Moanalua and Kona to determine the presence of previously unidentified TCPs within the 20-mile transit corridor. The study also included a robust mapping and documentation component that provides annotated maps of native traditions as well as historic literature to help identify the locations and possible boundaries of potential TCPs. Personal interviews with kūpuna and elder kama'āina of the areas represented some of the most significant finds in this study.

- Honolulu Authority for Rapid Transportation
- SRI Foundation
- Kumu Pono Associates
- Cultural Surveys Hawai'i
- Kahiwa Cultural Heritage Consulting



"HOALA LOKO I'A" PROGRAM

Loko i'a (Hawaiian Fishpond) systems were a vital component of Hawai'i's pre-contact communities; they are considered valuable cultural and ecological resources that can positively impact coastal ecosystems and their adjacent communities. There has been renewed interest in the repair, restoration, maintenance and operation of loko i'a. However, community organizations and traditional fishpond practitioners have struggled to maintain and restore fishpond systems due to complicated government regulations. The State of Hawai'i Department of Land and Natural Resources simplified the permitting process by utilizing a single application process.

- Governor David Y. Ige
- Honua Consulting
- Department of Land and Natural Resources
- Office of Conservation and Coastal Lands
- Conservation International Hawai'i
- Paepae o He'eia
- Kua'aina Ulu 'Auamo

JOIN THE WAHI PANA STEWARDS
A NEW MONTHLY GIVING PROGRAM

Become part of our Wahi Pana Steward monthly giving circle. It's fast, easy and convenient. No more renewal notices, checks to write and reminders for you, and sustained, consistent support for preservation efforts in Hawai'i through Historic Hawai'i Foundation.

WAHI PANA STEWARDS
PLACES TELL STORIES

HISTORICHAWAII.ORG/GIVEMONTHLY



NAVAL AMMUNITION STORAGE FACILITIES HISTORIC CONTEXT REPORT FOR LUALUALEI, WEST LOCH AND WAIKELE

This historic context report provides historic information and analysis of the Navy’s ammunition storage facilities for Lualualei, West Loch and Waikēle. Although much information had been gathered for the Navy Magazine Lualualei and the Naval Computer and Telecommunication Area Master Station Wahiawā, there was no comprehensive study that addressed this aspect of naval history. The primary objective was to provide Naval Facilities Engineering Command Hawai’i (NAVFAC) with the basis for preservation planning of the remaining facilities and associated assets and to support the Navy’s stewardship responsibilities for its historical resources. This report continues NAVFAC Hawai’i’s efforts to increase the Navy’s understanding of its own history and provides a solid base to inform cultural resources management at its outlying installations.

- Navy Region Hawaii
- Naval Facilities Engineering Command Hawaii
- NAVFAV Hawaii - EV5 Team
- Louis Berger
- Wil Chee Planning



MR. ALLEN WALL

Mr. Allen Wall is a deeply knowledgeable cultural historian committed to his work at Kona Historical Society and to preserving the particular records, mo’olelo, music, objects, artifacts, structures and way of life in Kona. Born in 1932, he grew up on the family’s ranch on Hawai’i Island and is a multi-generational Kona rancher. Mr. Wall was involved in the development of the living history program that coincided with the restoration of the H.N. Greenwell Store and its museum program. His leadership has led to the acquisition of two State Legacy Lands historic parcels of land, with sites stewarded by the Kona Historical Society for public enjoyment, and the upgrading of the Jean Greenwell Library and Archives. Mr. Wall has been a resource on a regular basis who serves the Kona community through research and programs.

- Mr. Allen Wall
- Kona Historical Society

CASTLE & COOKE CONGRATULATES HISTORIC HAWAII FOUNDATION



Castle & Cooke Hawaii’s 400 Keawe condominium in the heart of Kaka’ako reflects the ongoing commitment to our mission of Investing In Hawaii, Creating Communities, Delivering Dreams.

(808) 626-1133  castlecookehawaii.com



**AGAWA HOME RESTORATION
(LAHAINA, MAUI)**

Located within Lahaina’s National Historic Landmark District, the Agawa home was built in 1920 and was the home of one of the first Japanese lunas (supervisors) at Pioneer Mill. The home was slated to be demolished; however, a walk-through of the house evolved into a long term lease with Lahaina Restoration Foundation (LRF). The home was continuously occupied by the Agawa family for 84 years. LRF finished the restoration of the Agawa home and it is now rented to a family. In the future, LRF plans to turn the property into a Plantation Era Education Center to share the experience of home life during the early 1920s with Lahaina’s youth, residents and visitors.

- Lahaina Restoration Foundation
- Lincoln Construction
- Garden View, Inc.



**BUILDING 160 REHABILITATION
(TRIPLER ARMY MEDICAL CENTER,
O’AHU)**

Building 160 is an original building of the medical center that was constructed in 1948. It is a Modern building of reserved style and originally functioned as a general purpose warehouse. The rehabilitation of Building 160 converted the warehouse into a Command suite for the Regional Health Command, Pacific. The project required that the interior be re-purposed and sub-divided into administrative space while retaining exterior features and adding compatible access points. The end result is a functional building that was made sound while enhancing the original historic features.

- Facility Management Branch-TAMC
- U.S. Army Garrison-Hawaii
- The Directorate of Public Works-Environmental Division-USAG-HI
- U.S. Army-MEDCOM
- Bowers and Kobota Inc.
- Global Engineering & Construction, LLC
- HMS Construction Inc.

**Being local is about
connections. To the land.
To the community.
To the people.**

Hagadone is a proud printing partner, helping Historic Hawaii Foundation continue to make those local connections for years to come.



HAGADONE

Print | Market | Manage

808.847.5310 | HagadonePrinting.com



BUILDING 434 PRESERVATION (JOINT BASE PEARL HARBOR HICKAM, O'AHU)

Building 434 was built in 1921 and is associated with the development of the Naval Ammunition Depot. It is the only building of this type on the naval base. This project was designed to be a building inside of a historical building. The project removed most of the non-historic interior of the building while not impacting the historical exterior. Historic character-defining features such as structural steel trusses, terra cotta block walls, and original steel panel doors were retained. Building 434 was adaptively reused to house the Navy Information Operations Command Hawaii.

- Navy Region Hawa'i
- Naval Facilities Engineering Command Hawaii
- NAVFAV Hawaii- EV5 Team
- Navy Information Operations Command
- Raass Brothers Inc.
- Mason Architects, Inc.



BUILDING 435 REHABILITATION (FORT SHAFTER, O'AHU)

Building 435 was constructed in 1917 as an ammunition storage facility inside the Hawaiian Ordnance Depot and served as one of the ammunition production facilities for Navy ships in World War II. The building was used for general storage for many decades until the recent project rehabilitated the property for adaptive reuse as a veterinary clinic. The building now provides support to the U.S. Army Military Police Canine Units, all DoD security canine units on O'ahu, as well as Homeland Security. The exterior historic features of the concrete warehouse were maintained, such as the corrugated roofing, the ridge vents, the fenestration pattern and new windows and doors in the historic types. Some of the lost features were brought back during the rehabilitation.

- US Army Garrison-Hawaii
- The Directorate of Public Works-Environmental Division-USAG-HI
- U.S. Army - MEDCOM
- US Army Veterinary Command of the Pacific
- Bowers and Kobota
- J & J Worldwide Services
- Designer Built Systems, Inc.
- Architects Hawaii Ltd.



Photo: Kōloa Jodo Mission (Most Endangered 2007, Saved 2010)

2016 CALL FOR MOST ENDANGERED HISTORIC SITES SUBMITTALS

Do you know a historic site that is threatened? Nominate it to the 2016 list of Hawai'i's Most Endangered Historic Sites!

Visit: HistoricHawaii.org/mes

PRESERVATION AWARD



BUILDINGS 490 & 491 PRESERVATION (JOINT BASE PEARL HARBOR HICKAM, O'AHU)

Buildings 490 and 491 are one-story reinforced concrete structures built in 1944. These buildings were associated with development of additional storage facilities at Pearl Harbor during WWII to supply advance lines. This project consisted of the renovation and repair to the buildings in order to upgrade and extend the life of these historic facilities. The building structure work included abatement of all hazardous materials, repair and replacement of existing wood roof decking, roof trusses, roof and wall framing, columns and reinforced concrete bases, and perimeter concrete curbs.

- Navy Region Hawaii
- Naval Facilities Engineering Command Hawaii
- NAVFAV Hawaii - EV5 Team
- Raass Brothers Inc.
- Design West Architects



BUILDING 1200H ROOF PRESERVATION (JOINT BASE PEARL HARBOR HICKAM, O'AHU)

Built in 1938, Building 1200H is a light industrial storage building designed in the Art Moderne Style of architecture. A railroad track is adjacent to the raised walkway on the south side of Building 1200H where supplies were unloaded from trains. This walkway, the corrugated roof, and the large air vents visually define Building 1200H as an industrial, masculine style building and contributes to the overall purpose of Hickam Field. This project preserved those character defining features by repairing the roof and roof vents.

- Joint Base Pearl Harbor Hickam
- Naval Facilities Engineering Command Hawaii
- NAVFAV Hawaii - EV5 Team
- RWT LLC

SUSTAINING CHINATOWN:

Historic Preservation Summer Series 2016

The 2016 series will be held on the second Wednesday of the months of June, July and August from 12 – 1 p.m. at Lyon Associates, 45 No. King Street, 5th Floor. The one-hour classes are free and open to the public.

<p>WEDNESDAY, JUNE 8:</p> <p>Building System Upgrades: Mechanical Systems and Energy Conservation</p>	<p>WEDNESDAY, JULY 13:</p> <p>Hazardous Materials Abatement: Lead Paint, Asbestos, Canec and Pesticides</p>	<p>WEDNESDAY, AUG 10</p> <p>Zoning and Special District Design Guidelines in Chinatown</p>
--	--	---

For more information, contact the Chinatown Improvement District at 589-9927, www.cidchinatownhawaii.org



**FIRE STATION BUILDING 680
REHABILITATION (JOINT BASE PEARL
HARBOR HICKAM, O’AHU)**

The fire station was constructed in 1942. It is a two-story concrete building with a flat roof and parapet walls, and has a fire hose tower at the northwest corner. The rehabilitation project entailed exterior work, including repair of existing historic wood windows and screens, reconstruction of historic wood windows, repair or replacement in-kind of historic wood louvers at the fire hose tower, restoration of the historic metal stairway at the roof, replacement of exterior light fixtures, and patching of the exterior concrete walls.

- Joint Base Pearl Harbor Hickam
- Navy Region Hawaii
- Naval Facilities Engineering Command Hawaii
- Submarine Forces, US Pacific Fleet
- NAVFAC Hawaii - EV5 Team
- NAVFAC Hawaii FEAD
- Mason Architects, Inc.
- Sumo-Nan Inc. JV
- Coffman Engineers



**HE’EIA FISHPOND MAKAI KUAPĀ
RESTORATION (HE’EIA, O’AHU)**

He’eia Fishpond is an archaeological site that is currently being restored to its original use for aquaculture and food production. Originally built by native Hawaiians over 800 years ago, the fishpond is enclosed by a wall comprised of two separate volcanic rock walls parallel to each other about eight-feet apart, with the interior space filled with coral, rock and dirt. It forms a complete circle around the pond, enclosing 88 acres of brackish water. In 1965, the Keapuka Flood left a 200-plus foot gaping hole in the wall of He’eia fishpond. This gap

continued on next page



CONGRATULATIONS

*To all of the Preservation Honor
Award Recipients!*

*We’re proud to support
Historic Hawai’i Foundation
and the Awards Program.*



PRESERVATION AWARD

disrupted operations and subsequently led to decades of neglect and a state of disrepair. In December 2015, Paepae o He'eia successfully closed the puka with a new mākāhā (sluice gate), simultaneously entering a new chapter in their work in which they can properly retain fish in the pond and manage the site.

- Kamehameha Schools Bishop Estate
- Paepae o He'eia
- Kua'aina Ulu 'Auamo



'IOLANI PALACE FENCE, GATE & ROYAL TOMB PRESERVATION (HONOLULU, O'AHU)

The 'Iolani Palace improvements project repaired all 2,800 linear feet of the perimeter ironwork fences and gates surrounding the palace grounds. The perimeter ironwork fence and gates were dismantled in sections, sandblasted, hot-dip galvanized, primed and painted. The caps of the masonry walls were replastered to repair all the cracks, chipping and damage that occurred over the years. The brick walls of the Royal Tomb were repointed and all loose or missing bricks reset or installed. The project also included restoring the coat of arms mounted on each vehicular gate.

- Mason Architects, Inc.
- State Parks, Department of Land and Natural Resources
- Kaikor Construction
- Ms. Patti Bruce

LEAVE A LEGACY

Honor the history of aloha. Look into your heart for the local cause most meaningful to you and leave a gift in your will or trust. You will be adding a stitch to Hawai'i's legacy of giving.

give
beyond your years



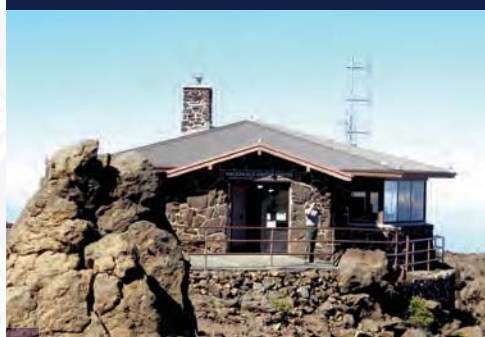
HAWAII COMMUNITY FOUNDATION
Amplify the Power of Giving

A message from Hawaii Community Foundation on behalf of nonprofit organizations serving the islands.
Learn more at HawaiiCommunityFoundation.org/Legacy or ask your professional advisor.

CENTENNIAL - 100 YEARS (1916)



FORT KAMEHAMEHA (O'ahu)



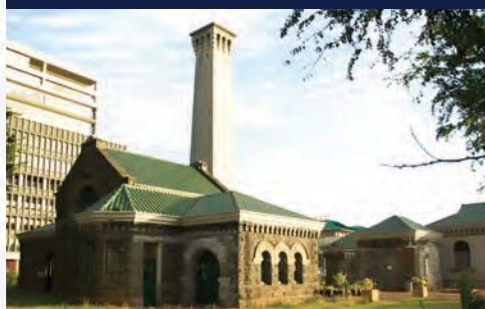
HALEAKALĀ NATIONAL PARK (Maui)



HAWAI'I COMMUNITY FOUNDATION (Statewide)



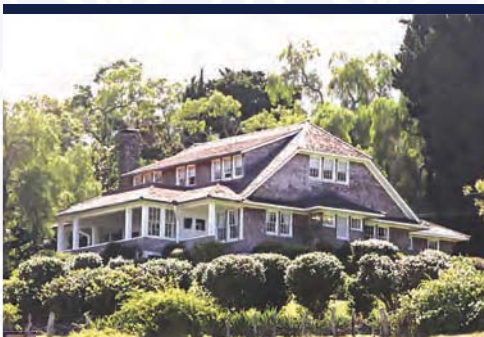
HAWAI'I VOLCANOES NATIONAL PARK (Hawai'i Island)



KAKA'AKO PUMPING STATION (O'ahu)



KAMAKA HAWAI'I, INC. (O'ahu)



KAONOULU RANCH (Maui)



KĪLAUEA MILITARY CAMP (Hawai'i)



KTA SUPER STORES (Hawai'i)



ST. ANTHONY CATHOLIC CHURCH (O'ahu)



WAIĀHOLE DITCH (O'ahu)

QUASQUICENTENNIAL – 125 YEARS (1891)



HAWAIIAN ELECTRIC COMPANY (O'ahu, Maui, Hawai'i)

SESQUICENTENNIAL – 150 YEARS (1866)



MCKINLEY HIGH SCHOOL (O'ahu)

Mahalo for the privilege of serving you with energy resources over the past 125 years.



Congratulations

to all the 2016 honorees and participants on their efforts to preserve Hawai'i's historic places.



Hawaiian Electric
Maui Electric
Hawai'i Electric Light

www.hawaiianelectric.com

DODRANBICENTENNIAL – 175 YEARS (1841)



PUNAHOU SCHOOL (O'ahu)

photo courtesy Punahou School

BICENTENNIAL – 200 YEARS (1816)



FORT ELISABETH (Kaua'i)

photo courtesy Alexander Molodtsov



JANE KURAHARA AND BETSY YOUNG

Jane Kurahara and Betsy Young are volunteers with the Japanese Cultural Center of Hawai'i, working on the effort to identify, document, evaluate and plan for the preservation of the World War-era confinement camp site in Honouliuli, O'ahu. Their efforts reached fruition in February 2015 when President Barack Obama designated the Honouliuli National Monument, ensuring its future preservation.

Kurahara has co-chaired the Hawai'i Confinement Sites Committee since its inception in 2005. She has taken the lead on the planning, coordination, and discourse on outreach presentations, archaeological surveys, spearheaded acquisition of key archival collection manuscripts and photographs relating to internment, was key in creating the original "Dark Clouds Over Paradise" traveling exhibits, and the development of the Hawai'i

internment curriculum of materials being taught in schools today. She is a retired school librarian and dedicates much of her free time in the Resource Center. She was the co-manager of the Resource Center as a volunteer from 2001 to 2006.

Young is an award-winning public school teacher, social studies curriculum specialist and school librarian, who has kept education as her main focus by helping to develop curriculum on Japanese American internment in Hawai'i being taught in our schools today. She has conducted countless outreach presentations to community groups and schools, and chaired and coordinated the successful Day of Remembrance on February 21, 2010 which highlighted the Honouliuli internment camp. She also co-managed the Resource Center as a volunteer from 2001-2006.



Congratulations

Jane & Betsy!

Thank you for preserving
Honouliuli



JAPANESE CULTURAL CENTER OF HAWAII

www.jcch.com • (808) 945-7633



HISTORIC
HAWAII
FOUNDATION

HISTORIC HAWAII FOUNDATION • 680 IWILEI ROAD, SUITE 690 • HONOLULU, HAWAII 96817