



WCP Inc.

April 29, 2014

Kiersten Faulkner, Executive Director
Historic Hawaii Foundation
680 Iwilei Road, Ste. 690
Honolulu, HI 96817

Dear Ms. Faulkner:

Subject: Pre-Assessment Consultation Request for the *Waikiki War Memorial Complex Project*
Environmental Impact Statement.

The City and County of Honolulu Department of Design and Construction (the City) proposes to undertake a series of improvements to the Waikiki War Memorial Complex (WWMC) area of the Kapiolani Regional Park. In accordance with Hawaii Revised Statutes Chapter 343 (Hawaii Environmental Policy Act) and its attendant Environmental Impact Statement Rules in Hawaii Administrative Rules Chapter 11-200, the City has determined that an Environmental Impact Statement (EIS) must be prepared for the proposed improvements.

A Final Environmental Assessment/Environmental Impact Statement Preparation Notice (FEA/EISPN) is anticipated to be published in summer 2014 and the subsequent Draft EIS should be available for public review in spring 2015. The forthcoming EIS will assess the direct, indirect, and cumulative impacts of the proposed WWMC improvement projects on both the natural and man-made environment. WCP Inc. has been retained by the City to prepare the EIS for the WWMC project. On behalf of the City, WCP recently contacted your organization to take part in the key stakeholder interview outreach effort for the subject project. As part of the wider early consultation effort and EIS scoping process, your organization is being sent this request letter as a means to provide an additional opportunity to express any further comments and/or concerns about the proposed project.

In 2009, the City convened a Task Force to make a recommendation to the Mayor with respect to the future of the Waikiki War Memorial Natatorium. The Task Force voted to recommend removal of the War Memorial Natatorium, create a memorial beach in its place and construct a replica memorial arch. Based on this outcome, the City espouses the Task Force's recommendation as its Proposed Action (preferred alternative).

The enclosed project information provides some background, a brief summary of the City's Proposed Action, and alternatives to be analyzed in the EIS. Note that the illustrations shown on the project information sheet represent general, preliminary concepts only and will be refined during the EIS process. The City is currently engaged in advancing the conceptual development of both the beach creation and restoration/reconstruction alternatives in order to facilitate a thorough and equitable analysis in the EIS.

Historic Hawaii Foundation

April 29, 2014

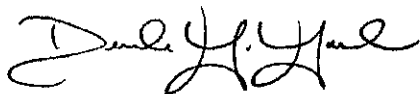
Page 2

Your written comments regarding specific issues or concerns you feel should be addressed in the forthcoming EIS will be much appreciated. Please mail your written comments to the address below by May 30, 2014.

WCP Inc.
99-061 Koaha Way
Suite 208
Aiea, Hawaii 96701

Thank you very much for your time and cooperation. The City looks forward to your involvement in this critical public participation phase of the EIS process.

Sincerely,

A handwritten signature in black ink, appearing to read "Derek Yasaka". The signature is fluid and cursive, with the first name "Derek" and last name "Yasaka" clearly distinguishable.

Derek Yasaka, President

Enclosure

cc. Chris Takashige, Director, Department of Design and Construction
Clifford Lau, Chief Facilities Division, Department of Design and Construction



Department of Design
and Construction

Environmental Impact Statement for the Waikiki War Memorial Complex, Oahu, Hawaii

Project Information Sheet

Introduction

The City and County of Honolulu – Department of Design and Construction (City) is proposing improvements to the Waikiki War Memorial Complex (WWMC) area of Kapiolani Regional Park. The City will be preparing an Environmental Impact Statement (EIS) for the proposed WWMC improvement project in compliance with the HRS, Chapter 343 - Hawaii Environmental Policy Act (HEPA) and as implemented by HAR 11-200 - Environmental Impact Statement Rules. The forthcoming draft EIS is anticipated to be released in the spring of 2015.

Project Location and Background

The WWMC site is located on Oahu's southern shoreline in Waikiki and is dominated by a structure known as the Natatorium (Figures 1 and 2). The Natatorium was constructed in 1927 and is listed on both the State and National Registers of Historic Places. It is comprised of a 100-meter salt water swimming pool and surrounding pool deck, bleachers, restrooms, shower facilities, storage, and office space. The entire structure was constructed of reinforced concrete placed on coral reef in shallow offshore waters, extending from the shoreline seaward. Other park facilities at the WWMC include benches, picnic tables, outdoor showers, and parking for beach and park users.

Repair and maintenance of the Natatorium became an issue as early as 1929. Basic repairs were made and the deep section of the pool dredged and enlarged to make high diving safe. By 1949, major refurbishing was necessary and structural and electrical installations were undertaken including a new diving tower, floodlights for swim meets, concrete floor around the pool, and a sewer pump. However, over the succeeding years, the Natatorium continued to deteriorate, ultimately leading to its closure in 1979. Due to the continued safety and health hazards posed by the deteriorated structure, the Natatorium pool and bleachers have remained closed the public.

Purpose and Need for the Action

The purpose of the proposed project is to improve the WWMC area of Kapiolani Regional Park, including determining the final disposition of the Natatorium in order to remedy the visual/aesthetic blight and the public safety and health risks posed by the deteriorated structure, renew the memorial to World War I veterans, and fully reopen this area of Kapiolani Regional Park to the public.

Alternatives to be Evaluated in EIS

Alternatives (and their key elements) that will be analyzed in the forthcoming EIS are summarized below:

1) Proposed Action (Preferred Alternative):

Creation of War Memorial Beach (Figure 3)

- Creation of a new beach situated at the present site of the Natatorium
- New beach will be fronted by a replica World War I memorial arch in alignment with the existing Roll of Honor plaque and hau tree arbor
- Additional proposed park improvements include construction of a new bathhouse, removal of internal roadway, and construction of a consolidated parking lot

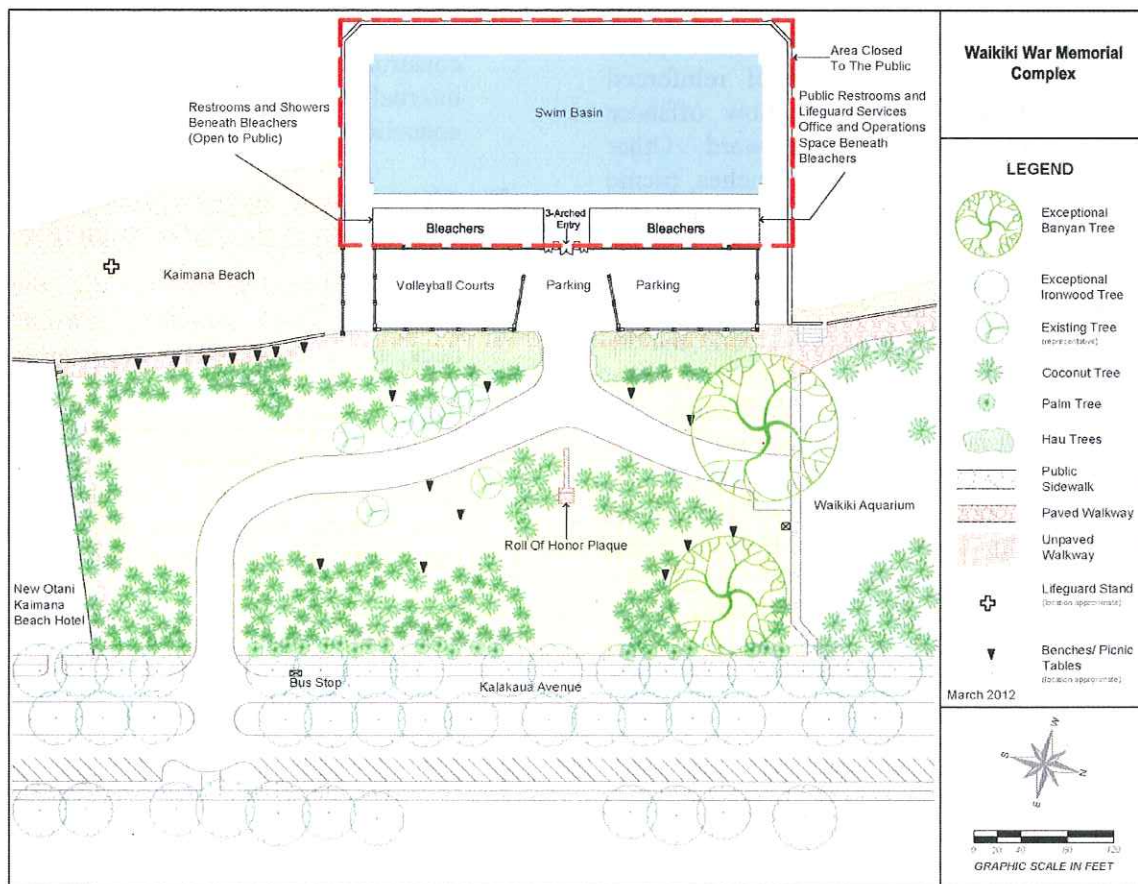
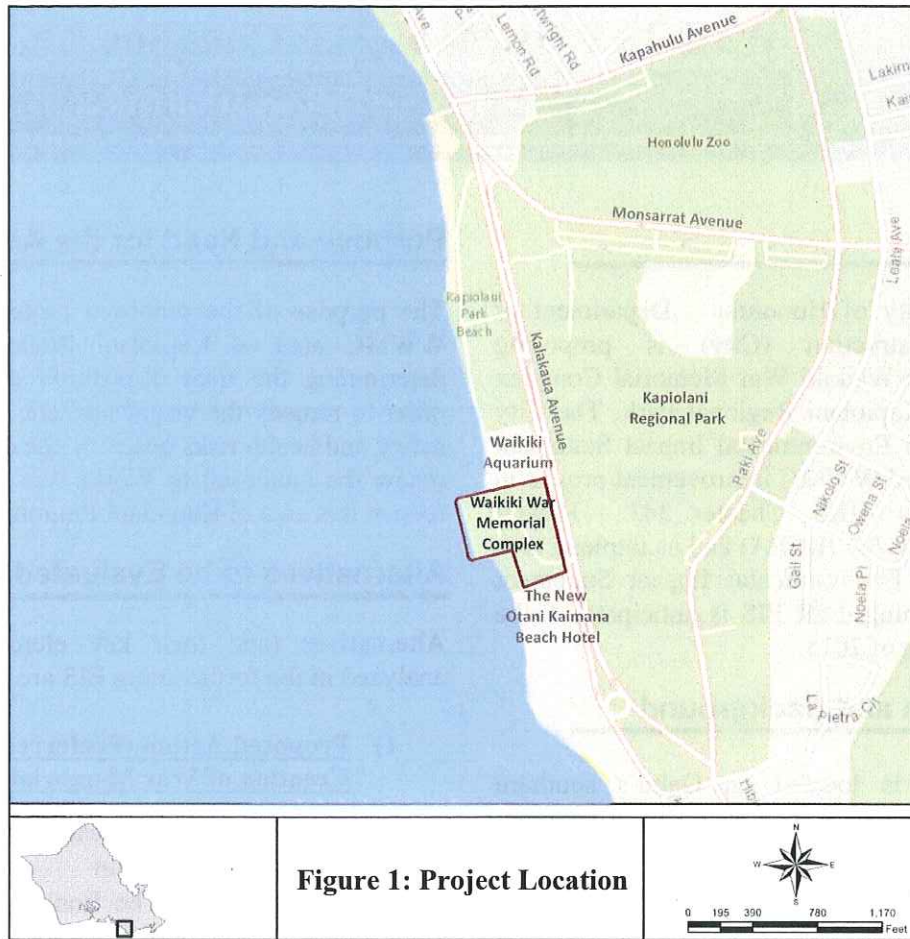
2) Alternative 1: Reconstruction and

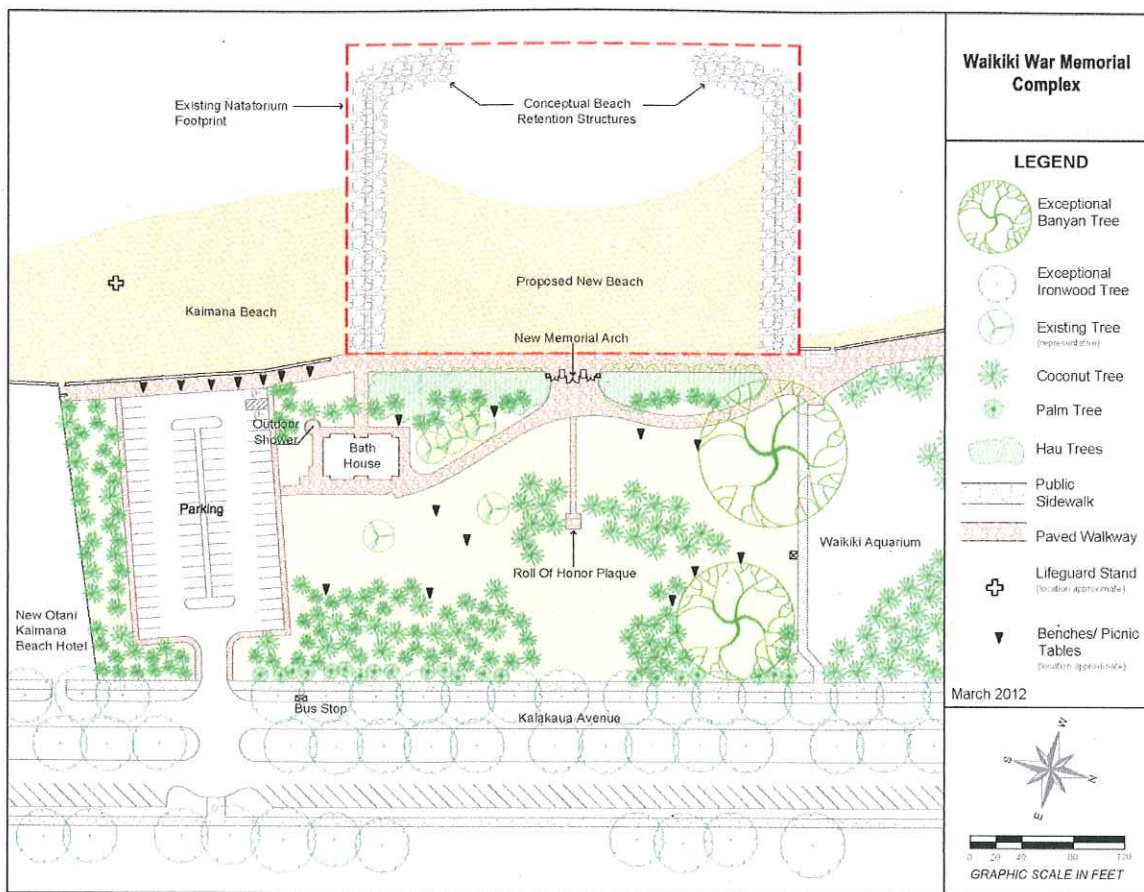
Restoration of the Natatorium (Figure 4)

- Reconstruction/restoration of the existing swimming pool structure, surrounding pool deck, bleacher structure, entry arch, and other facility improvements (i.e., restrooms, and shower facilities, storage, and office space)
- Additional proposed park improvements include reconstruction of the volleyball court and the Ewa parking lot fronting the Natatorium, new exterior shower, walkways, and street lights

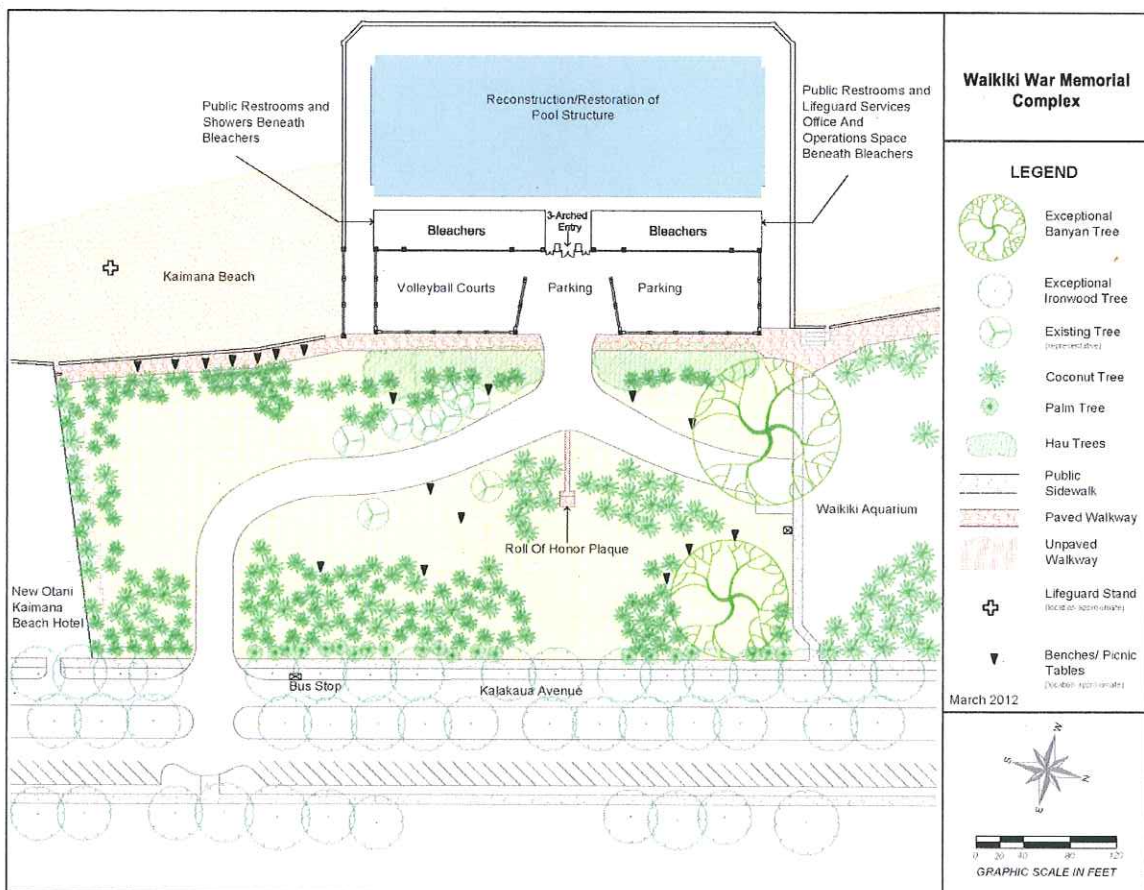
3) Alternative 2: No Action

- Required by HEPA
- Improvements to the WWMC area of Kapiolani Regional park would not occur
- Provides baseline for comparison of impacts





**Figure 3: Proposed Action (Preferred Alternative)
(Preliminary Conceptual Rendering)**



**Figure 4: Alternative 1
(Preliminary Conceptual Rendering)**

Note: Illustrations represent general, preliminary concepts only and will be further refined during the EIS process.